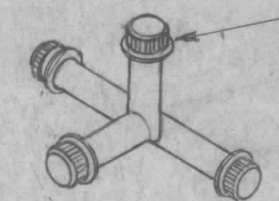
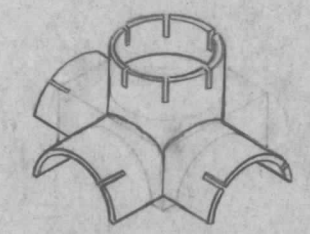
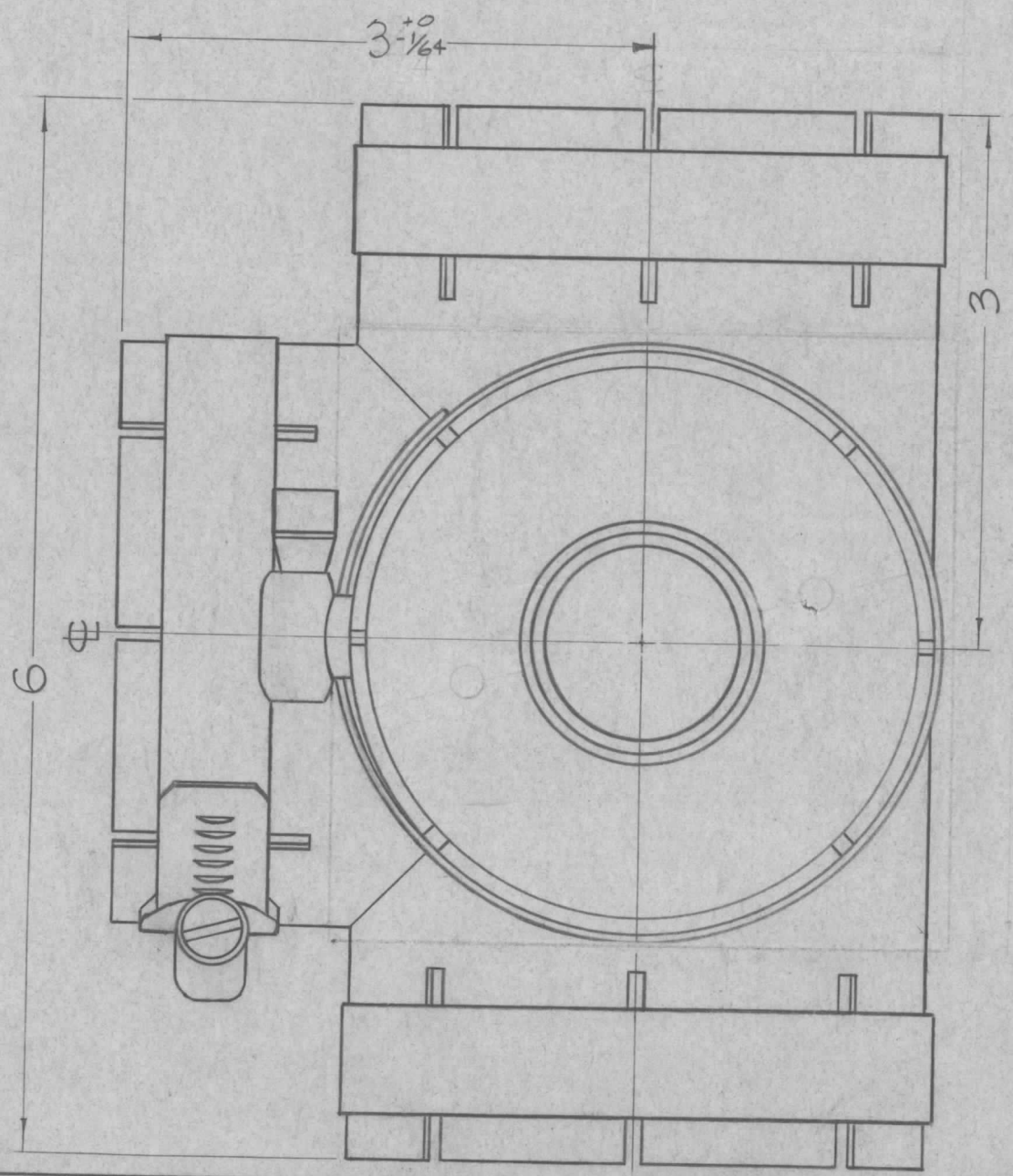
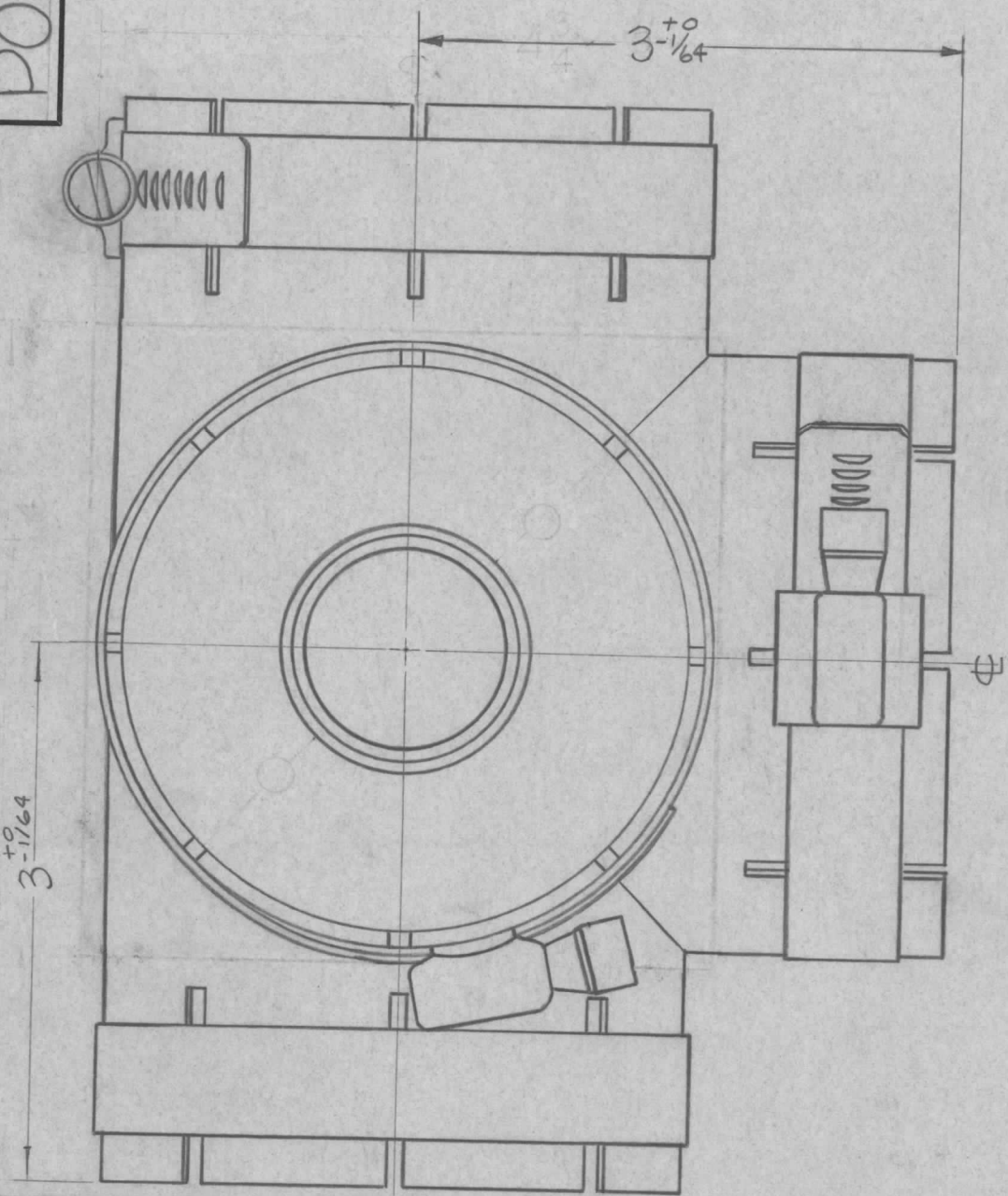
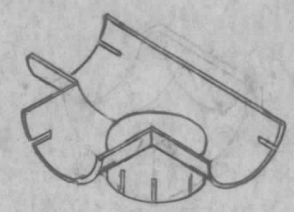


PO 271 A

THE CONTENTS OF THIS DRAWING ARE THE EXCLUSIVE PROPERTY OF THE TECHNICAL MATERIEL CORP. ITS UNAUTHORIZED USE OR REPRODUCTION IN WHOLE OR IN PART IS STRICTLY FORBIDDEN.



CONTACT, ELECTRICAL SPRING, TMC NO. PO 289-1



CLAMP TMC NO. CU 129-1455

A	4 3/4 #2 DELE (2 PK) 3 1/2 #4 ADD (2 PK)	7/6/66	15528	JW	aa	
0	ORIGINAL RELEASE	7.17.64		LSB		
SYM	DESCRIPTION	DATE	CH. NO.	DRAFTS	CHECKER	ENG. APP.
UNLESS OTHERWISE SPECIFIED:		SCALE: 5A01-48 (1131)				
DIMENSIONS ARE IN INCHES		MAXIMUM ALLOWABLE TOLERANCES HAVE BEEN DETERMINED AND ANY DEVIATIONS WILL BE CAUSE FOR REJECTION. REMOVE ALL BURRS AND SHARP EDGES				
TOLERANCES ON FRACTIONS ± 1/64 DECIMALS ± .005 ANGLES ± 1/2°						

REQ. PER UNIT	MODEL	SECTION	ASS'Y. NO.	DATE
1	GPT-200K			5-11-63
USED ON				

REQ.	ITEM	PART NO.	F. BUDETTI	DESCRIPTION	SYMBOL
			THE TECHNICAL MATERIEL CORP. MAMARONECK, NEW YORK		
			ELBOW, 4 WAY		
			3-1/8		
			John C. Biele	AA	aa
			DRAWN	CHECKED	FINAL APPROVAL
			aa	aa	PO 271 A
			ELEC. DES. APP.	MECH. DES. APP.	