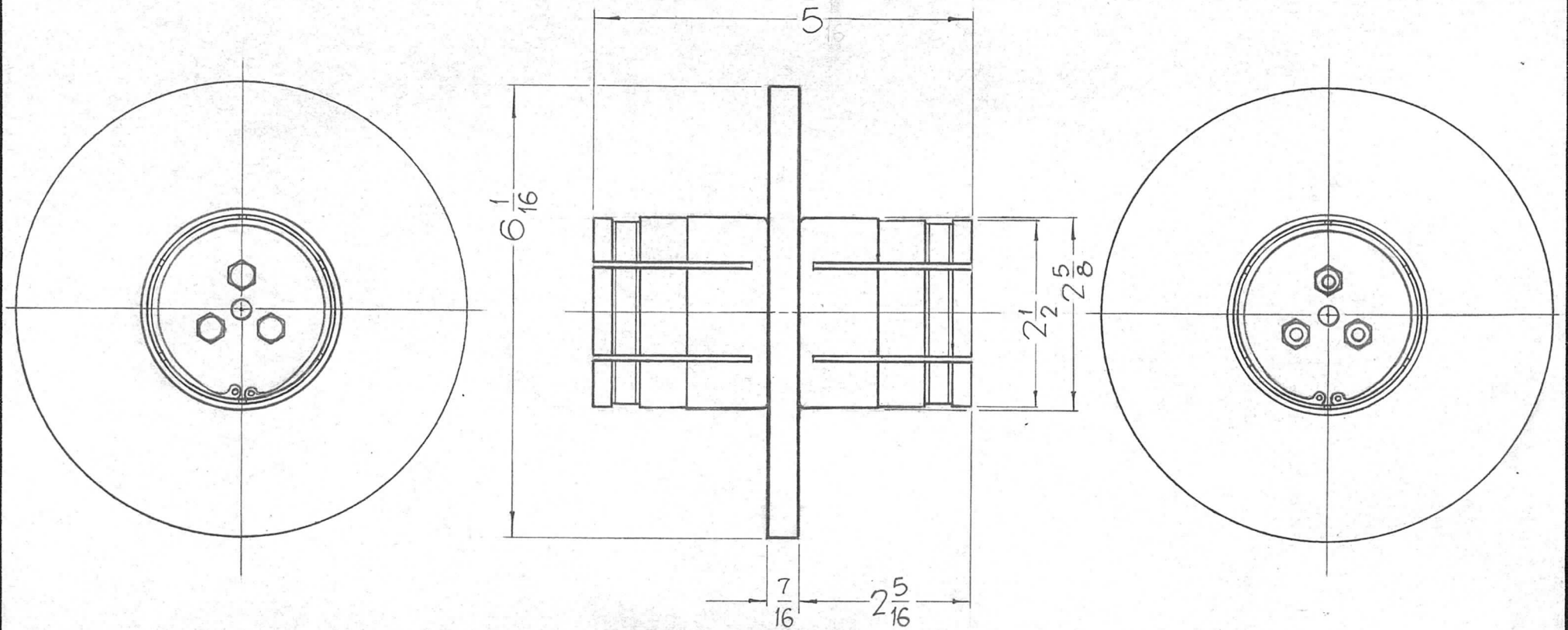


THE CONTENTS OF THIS DRAWING ARE THE EXCLUSIVE PROPERTY OF THE TECHNICAL MATERIEL CORP. ITS UNAUTHORIZED USE FOR REPRODUCTION IN WHOLE OR IN PART IS STRICTLY FORBIDDEN.

|               |          |            |          |        |   |
|---------------|----------|------------|----------|--------|---|
| REQ. PER UNIT | USED ON  |            |          | PO-255 | O |
|               | MODEL    | ASS'Y. NO. | DATE     |        |   |
| 2             | GPT-200K | AX-397     | 11-13-63 |        |   |



PART OF THE NO. 20-... 9

|      |      |                    |  |                 |                |
|------|------|--------------------|--|-----------------|----------------|
| REQ. | ITEM | PART NO.           | F. BUDETTI   | DESCRIPTION     | SYMBOL         |
|      |      |                    | THE TECHNICAL MATERIEL CORP.<br>MAMARONECK, NEW YORK |                 |                |
|      |      | STOCK SIZE         | CONNECTOR, R.F. TRANSMISSION                         |                 |                |
|      |      | MATERIAL           | LINE 6-1/8   |                 |                |
|      |      |                    | John C Biele   | aa              | RAT            |
|      |      | TYPE & TEMPER      | DRAWN  | CHECKED         | FINAL APPROVAL |
|      |      | HEAT TREAT. SPEC.  | DB   | ae 4/13/64      | PO-255 O       |
|      |      | FINISH & SPEC. NO. | ELEC. DES. APP.                                      | MECH. DES. APP. |                |

|   |   |
|---|---|
| UNLESS OTHERWISE SPECIFIED<br>DIMENSIONS ARE IN INCHES AND INCLUDE<br>CHEMICALLY APPLIED OR PLATED FINISHES | SCALE<br>1/2" = 1"                        |
| DECIMALS<br>.X ± .05<br>.XX ± .01<br>.XXX ± .005  | FRACTIONS<br>± 1/64<br>ANGLES<br>± 0° 30' |
| TOLERANCES  | CODE<br>C                                 |
|   | S401-276 (#18902)                         |