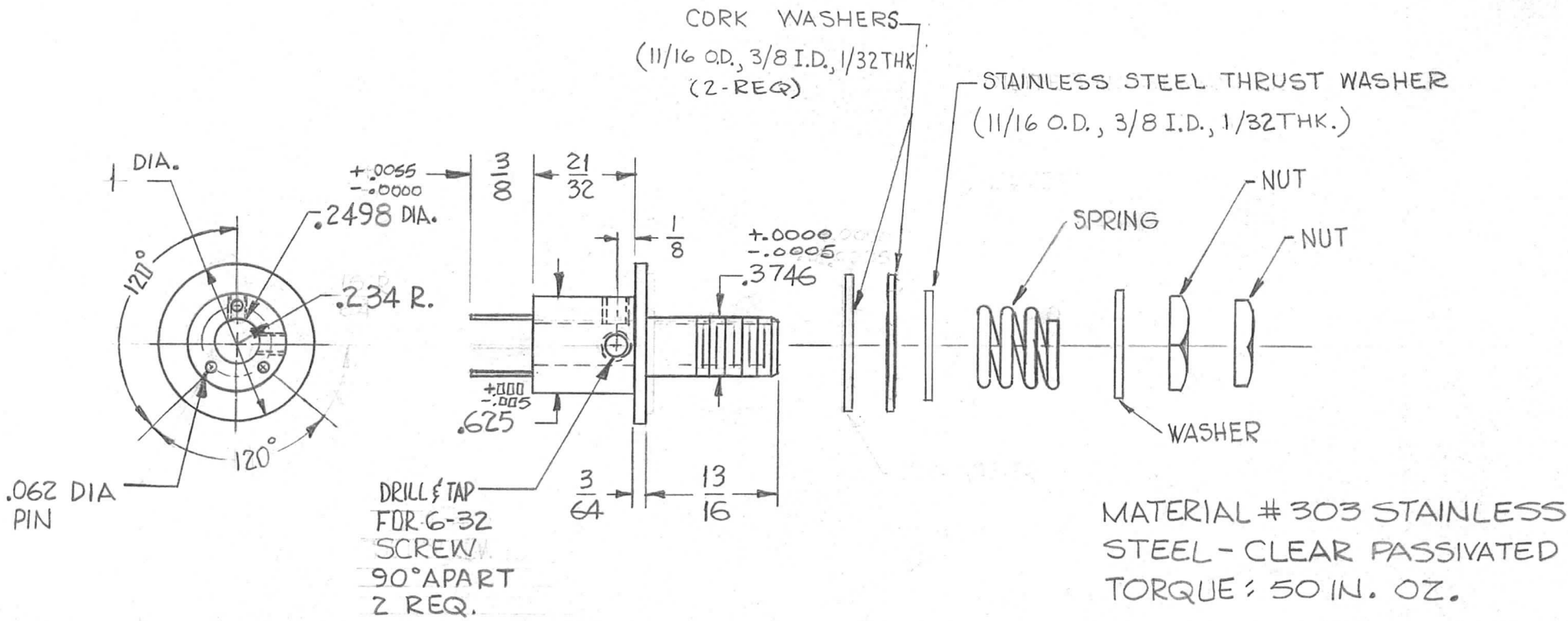


THE CONTENTS OF THIS DRAWING ARE THE EXCLUSIVE PROPERTY OF THE TECHNICAL MATERIEL CORP. ITS UNAUTHORIZED USE OR REPRODUCTION IN WHOLE OR IN PART IS STRICTLY FORBIDDEN.

REQ. PER UNIT	USED ON	
	MODEL	ASS'Y. NO.
1	HFR-1X/T	9-24-62

PO-247 C



MODIFIED AS PER TMC REQUIREMENTS
STERLING (MMZ-4 MODIFIED PER TMC)

SYM	DESCRIPTION	DATE	CH. NO.	DRAFTS	CHECKER	ENG. APP.	REQ. ITEM	PART NO.	DESCRIPTION	SYMBOL		
C	STAINLESS STEEL WASHER WAS OILITE; THICKNESS WAS 3/16	1-10-63	8016						THE TECHNICAL MATERIEL CORP. MAMARONECK, NEW YORK CLUTCH, SLIP BAND # 7	 		
B	6-32 TAPPED HOLE WAS 4-40 TAP.	12-7-62	7794				STOCK SIZE					
A	OILITE THRUST WASHER ADDED CORK WASHER WAS WASHER	7-24-62	6952									
							MATERIAL					
UNLESS OTHERWISE SPECIFIED:		SCALE: $1/2" = 1"$					TYPE & TEMPER		HEAT TREAT. SPEC.	DRAWN	CHECKED	FINAL APPROVAL
DIMENSIONS ARE IN INCHES		MAXIMUM ALLOWABLE TOLERANCES HAVE BEEN DETERMINED AND ANY DEVIATIONS WILL BE CAUSE FOR REJECTION. REMOVE ALL BURRS AND SHARP EDGES					FINISH & SPEC. NO.		ELEC. DES. APP.	MECH. DES. APP.	PO-247 C	
TOLERANCES ON							FRAC. $\pm 1/64$ DEC. $\pm .005$ ANGLES $\pm 1/2^\circ$					