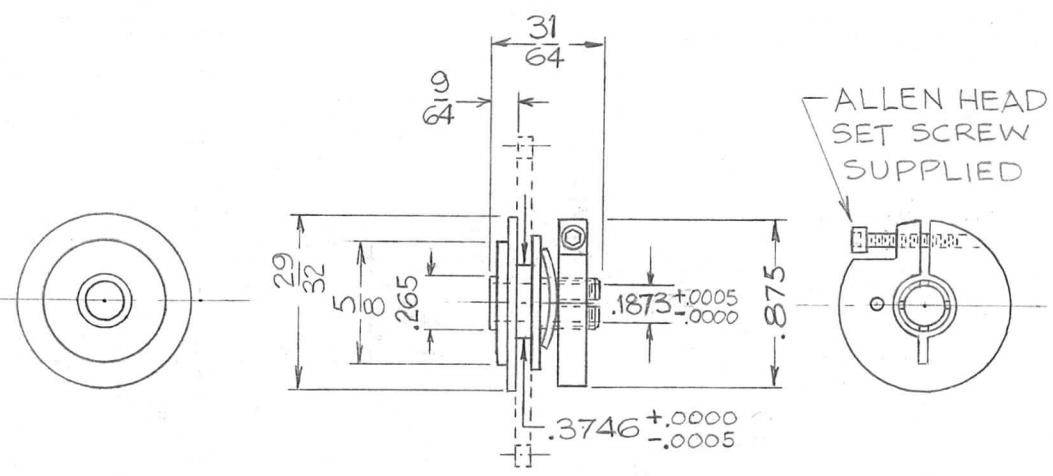


THE CONTENTS OF THIS DRAWING ARE THE EXCLUSIVE PROPERTY OF THE TECHNICAL MATERIEL CORP. ITS UNAUTHORIZED USE OR REPRODUCTION IN WHOLE OR IN PART IS STRICTLY FORBIDDEN.

REQ. PER UNIT 2	USED ON		PO-235
	MODEL	ASS'Y. NO.	
	GPR-92	DATE 6-16-62	



REF: STERLING INSTRUMENT CAT. NO. G150-3

								REQ.	ITEM	PART NO.	GELLMAN	DESCRIPTION	SYMBOL	
											THE TECHNICAL MATERIEL CORP. MAMARONECK, NEW YORK			
										STAINLESS STEEL	CLUTCH, SLIP			
SYM	DESCRIPTION	DATE	CH. NO.	DRAFTS	CHECKER	ENG. APP.								
UNLESS OTHERWISE SPECIFIED: DIMENSIONS ARE IN INCHES TOLERANCES ON FRAC. ± 1/64 DEC. ± .005 ANGLES ± 1/2°		SCALE: MAXIMUM ALLOWABLE TOLERANCES HAVE BEEN DETERMINED AND ANY DEVIATIONS WILL BE CAUSE FOR REJECTION. REMOVE ALL BURRS AND SHARP EDGES						#303			V.R.R.	JMA	BP	
							S-104	PASSIVATE		DRAWN	CHECKED	FINAL APPROVAL		
								FINISH & SPEC. NO.		ELEC. DES. APP.	MECH. DES. APP.	PO-235		