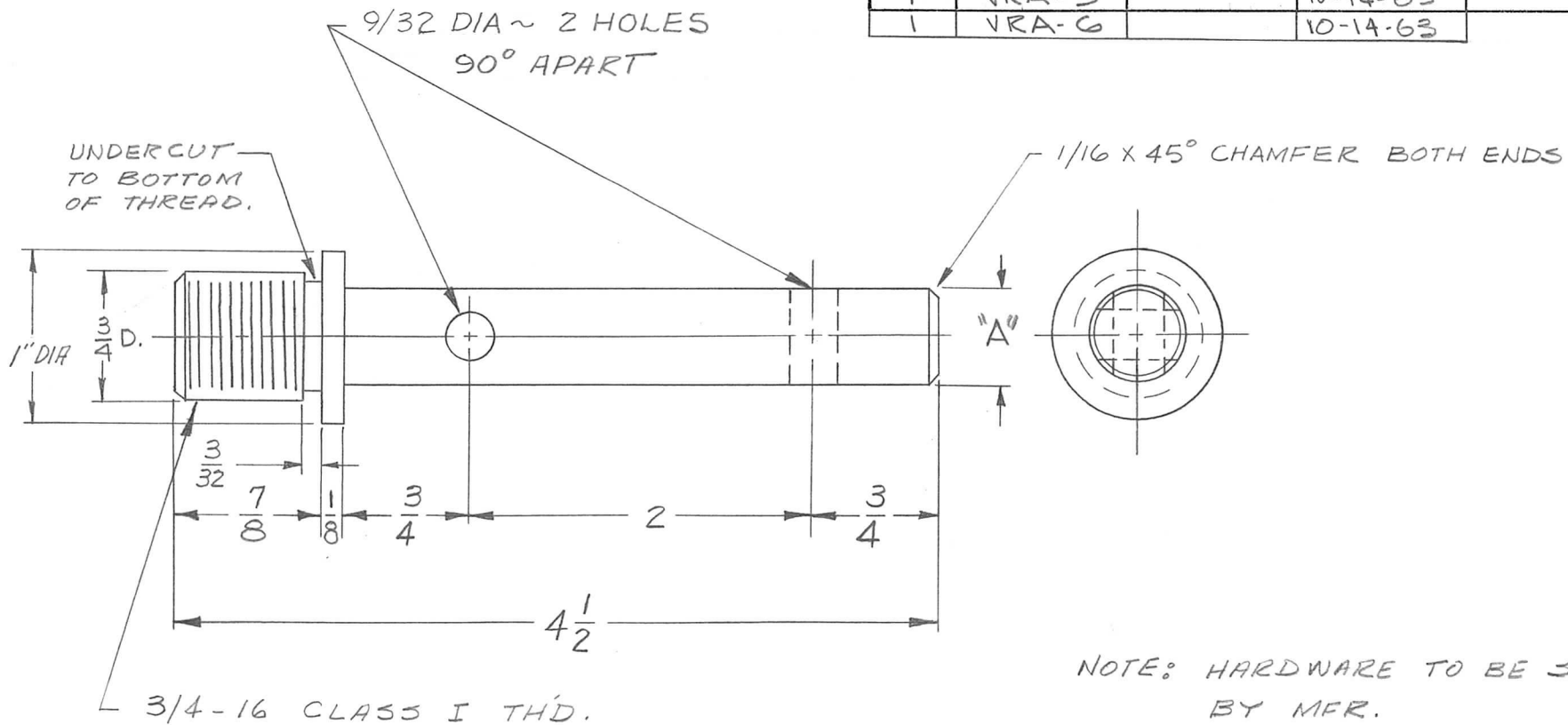


REQ. PER UNIT	USED ON		
	MODEL	ASS'Y. NO.	DATE
1	VRA-5		10-14-63
1	VRA-6		10-14-63

PO-216 D



NOTE: HARDWARE TO BE SUPPLIED BY MFR.

2 EA. { 1/4-20 x 1 1/4 HEX. HD. CAP SCR. (STAINLESS)
1/4-20 HEX NUT. (STAINLESS)
1/4 SPLIT L'WASHER (STAINLESS)

TMC P/NO	DIMENSION "A"
PO 216	.578 ^{+0.002} _{.000} DIA
PO 216-2	.666 - .670 DIA.

SYM	DESCRIPTION	DATE	CH. NO.	DRAFTS	CHECKER	ENG. APP.	REQ. ITEM	PART NO.	DESCRIPTION	SYMBOL	
D	DIM'S 578 ^{+0.002} _{.000} WAS 9/16D.	12-1-62		G.D.L.					THE TECHNICAL MATERIEL CORP. MAMARONECK, NEW YORK POST, ANTENNA	D	
C	CHART & "A" DIM. ADD	6-15-63	22046	G.D.L.	JR			STOCK SIZE			
B	IN NOTE 1/4-20 x 1 1/4 HEX. HD. WAS 1/4-20 x 1/4 HEX. HD.	11/20/63	10452	AD	at	WJB		TYPE 303 STAINLESS ROD			
A	REVISED WITH CHGS.	10/14/63	10191	AD	M/T	WJB		MATERIAL			
UNLESS OTHERWISE SPECIFIED DIMENSIONS ARE IN INCHES AND INCLUDE CHEMICALLY APPLIED OR PLATED FINISHES		SCALE		FULL			C. D. & ANNEALED		DRAWN: <i>Lewis</i> CHECKED: <i>M/T 10/14/63</i> FINAL APPROVAL: <i>BP</i>		
TOLERANCES		CODE		3401-135			TYPE & TEMPER		TYPE & TEMPER: 3104-PASSIVATE HEAT TREAT. SPEC.: FINISH & SPEC. NO.:	ELEC. DES. APP.	MECH. DES. APP.
DECIMALS .X ± .05 .XX ± .01 .XXX ± .005		FRACTIONS ± 1/64 ANGLES ± 0° 30'									PO-216 D