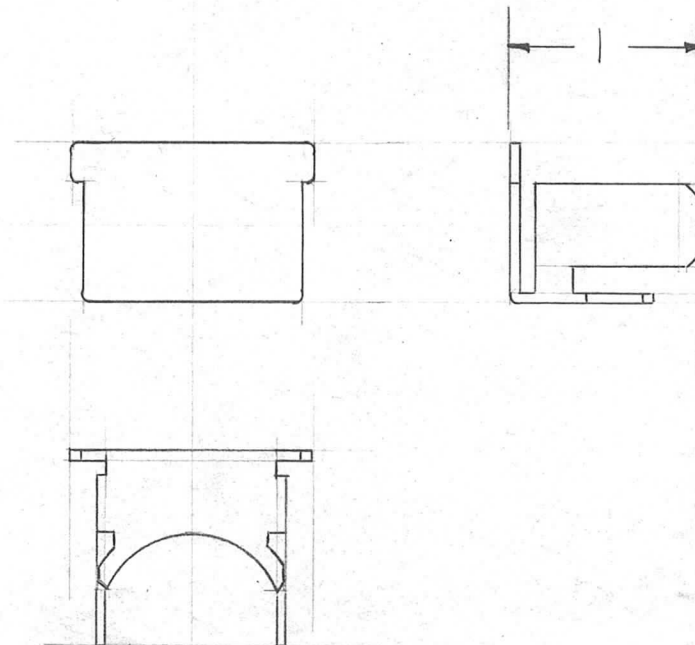


REQ. PER. UNIT	USED ON			PO-161	△
	MODEL	ASS'Y. NO.	DATE		

REF: FOR USE WITH CONNECTOR STRIP
TMC # PO-160



REF - WIREMOLD #G2110B

							REQ.	ITEM	PART NO.	DESCRIPTION	SYMBOL							
										THE TECHNICAL MATERIEL CORP.								
							STOCK SIZE			MAMARONECK, NEW YORK								
							MATERIAL			END FITTING, BLANK,								
△	1	(G)ADDED ON REF, FINISH ADDED	2-27-62	6452	LL	RB				CONNECTOR STRIP								
ISSUE	ITEM	CHANGED FROM	DATE	CH. NO.	DRAFTS	CHECKER	ENG. APP.											
TOLERANCES			SCALE:				DRILLED		HJE		ARR							
DEC. DIM. ±			MAXIMUM ALLOWABLE TOLERANCES HAVE BEEN DETERMINED AND ANY DEVIATIONS WILL BE CAUSE FOR REJECTION. REMOVE ALL BURRS AND SHARP EDGES				TYPE & TEMPER		HEATTREAT. SPEC.		DRAWN		CHECKED		FINAL APPROVAL			
FRAC. DIM. ±							GREY		86									
ANGULAR DIM. ±							FINISH & SPEC. NO.		ELEC. DES. APP		MECH. DES. APP		PO-161		△			