

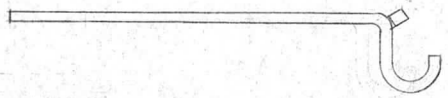
IF IT IS FOUND DESIRABLE TO CHANGE ANY TOLERANCE OR OTHER DETAIL SPECIFIED ON THIS DRAWING NOTIFY THE PURCHASER PROMPTLY.

PO-127 A

MAXIMUM ALLOWABLE TOLERANCES HAVE BEEN DETERMINED AND DEVIATIONS WILL BE CAUSE FOR REJECTION. REMOVE ALL BURRS AND SHARP EDGES

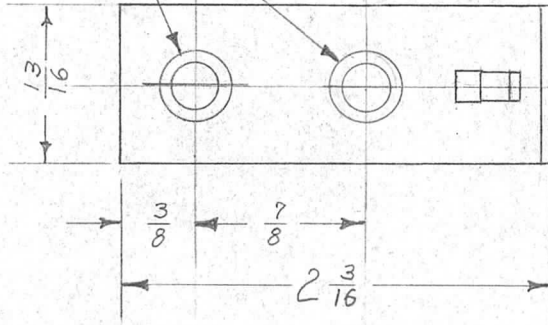
USED ON

MODEL	PROJECT NO.	ASS'Y. NO.	DATE
TAC-1	132	A-715	1-20-54



DIMENSIONS FOR REF ONLY

DRILL & COUNTERSINK FOR #10 FLATHEAD SCREW



REF: AMERICAN CABINET HARDWARE CORP.; CAT. NO. 9388-17

REQ.	ITEM	PART NO.	DESCRIPTION	SYMBOL
			THE TECHNICAL MATERIEL CORP. MAMARONECK. NEW YORK	
		STOCK SIZE		
		STEEL	STRIKE	
		MATERIAL	WEIGHT PER PC.	
		11		
		TYPE & TEMPER	F.M. 8-27-53	
		11		
		HEAT TREAT. SPEC.		
		SMOOTH BLACK GLOSS ENAMEL (S-116)		
		FINISH & SPEC. NO.		
			DRAWN	MECH. DES. APP.
			CHECKED	FINAL APPROVAL
				PO-127 A

A	1	1/2" DIM. ADDED	10-26-60	3292	2/8	No	ARB
ISSUE	ITEM	CHANGED FROM	DATE	CN. NO.	DRAFTS	CHECKER	ENG. APP.

TOLERANCES		SCALE
ALL OTHERS	DEC. DIM. ± FRAC. DIM. ± ANGULAR DIM. ±	DRILL, PUNCH, COMMERCIAL STOCK SIZES AND MANUFACTURERS TOLERANCES ARE NOT INCLUDED.