

TMC PART NUMBER	DIMENSION		MAX. WIRE SIZE	±.001 C
	A	B		
PN123-14*	.081	.105	14	.062
PN123-16*	.067	.097	16	↑
PN123-18*	.052	.078	18	
PN123-20*	.045	.065	20	
PN123-22*	.033	.055	22	↓
PN123-24*	.027	.055	24	.062

PN123

REVISIONS						
SYM	DESCRIPTION	DATE	E.M.N. NO.	DRAFT	CHKD	APPD
X <sub>1</sub>	DELE MFG. P/N ON CHART.	2-27-67	X <sub>1</sub>	RME		
Ø	ORIGINAL RELEASE FOR PRODUCTION	3.1.67	-*	WFO		

SPECIFICATIONS

MATERIAL OF CONTACTS: MALE-BRASS PER ASTM -B-16 COMPOSITION A OR (LEADED COMMERCIAL BRONZE)  
 FEMALE - BRASS PER ASTM-B-16 COMPOSITION A WITH BERYLLIUM COPPER RETENTION CLIP OR (PHOSPHOR BRONZE)

FINISH: 0.000030 MINIMUM GOLD OVER 0.0002 MINIMUM SILVER OR 0.000030 NICKEL

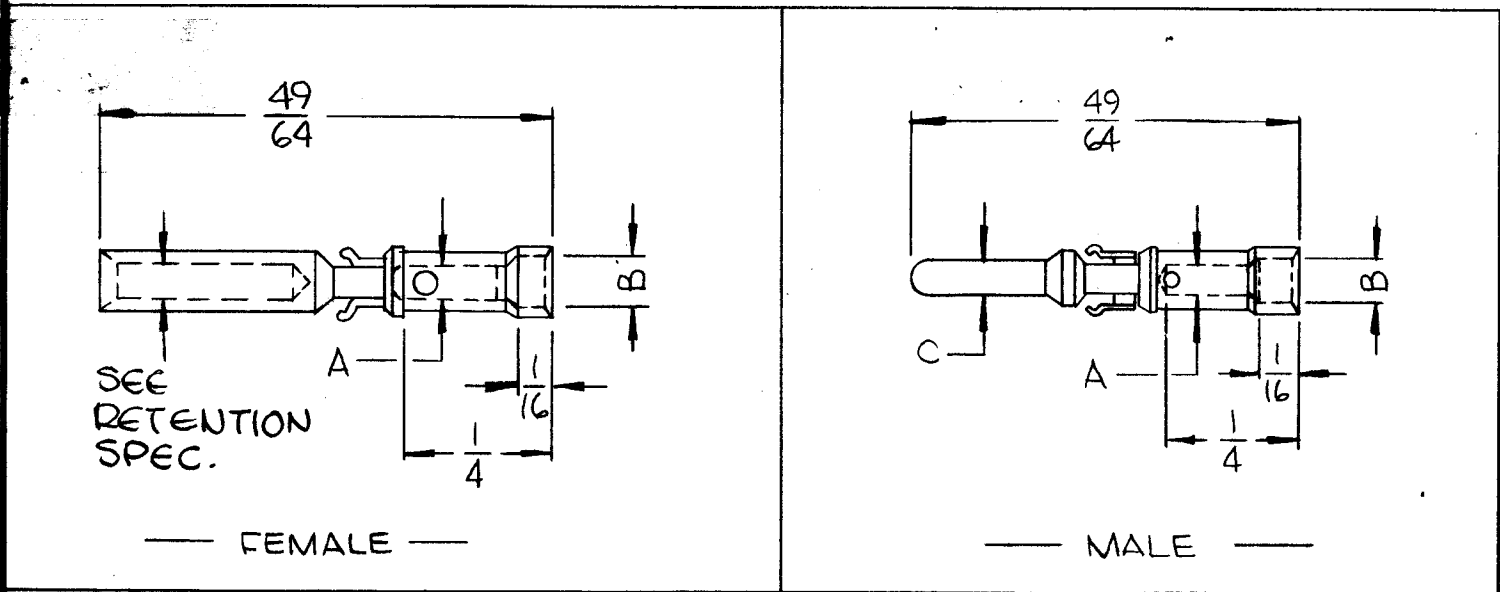
CONTACT TYPE: CRIMP

RETENTION: FEMALE WILL ACCEPT A PIN 0.062 ±0.001 DIAMETER #10 MICRO-INCH FINISH, HOLD 2.0 OUNCES AND RELEASE WITH 8.0 OUNCES OR MORE.

CURRENT RATING: 0.062 DIAMETER CONTACT- 13.0 AMPS

USED WITH: JJ 333

NOTE: BRACKETED SPECIFICATIONS ARE ALTERNATE  
 UNDERLINED SPECIFICATIONS ARE PREFERRED



\* INSERT S - SOCKET FEMALE  
 P - PIN CONTACT MALE

NOTES

VOX-7		
Q'TY./UNIT	MODEL USED ON	ASS'Y. NO.
SCALE	CODE	S401-340
DO NOT SCALE		S401-441

THE CONTENTS OF THIS DRAWING ARE THE EXCLUSIVE PROPERTY OF THE TECHNICAL MATERIEL CORP. ITS UNAUTHORIZED USE OR REPRODUCTION IN WHOLE OR IN PART IS STRICTLY FORBIDDEN.

REQ'D.	ITEM	PART NUMBER	DESCRIPTION	SYMBOL
LIST OF MATERIAL				
MATERIAL		THE TECHNICAL MATERIEL CORP. MAMARONECK, NEW YORK		
FINISH		TITLE		
SEE SPECS		PIN, CONTACT, CRIMP		
UNLESS OTHERWISE SPECIFIED DIMENSIONS ARE IN INCHES AND INCLUDE CHEMICALLY APPLIED OR PLATED FINISHES		DRAWN	DATE	FINAL APPROVAL
		WFO		WFO
		CHECKED	DATE	
		JCF		2-28-67
		ELECT. DES.	DATE	
				PN123
		MECH. DES.	DATE	
			2-28-67	Ø
			SHEET	REV. LTR.