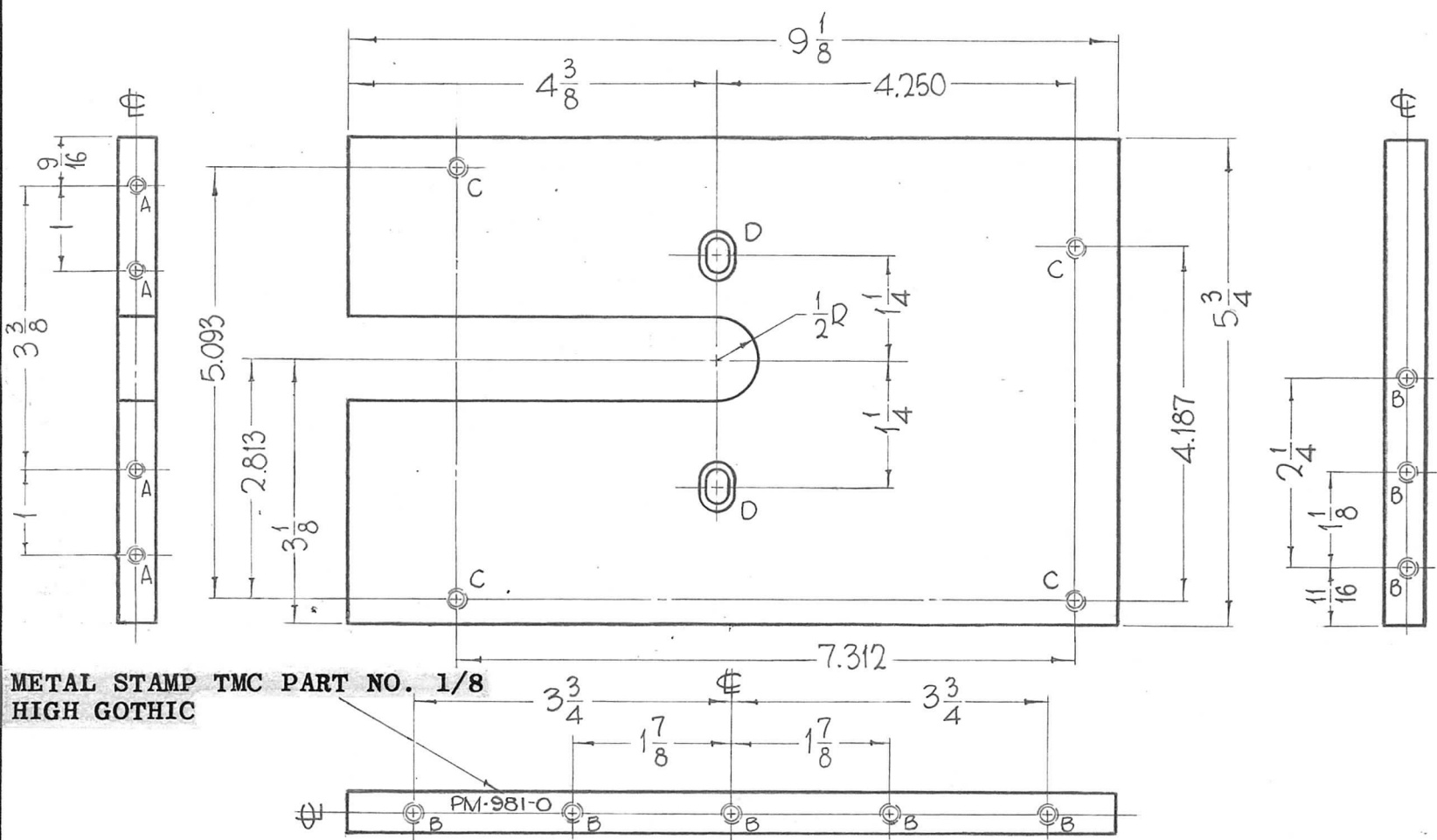


REQ. PER UNIT	USED ON		
	MODEL	ASS'Y. NO.	DATE
1	GPT-200K(AK-395)	A-3240	9-7-63

PM-981-0

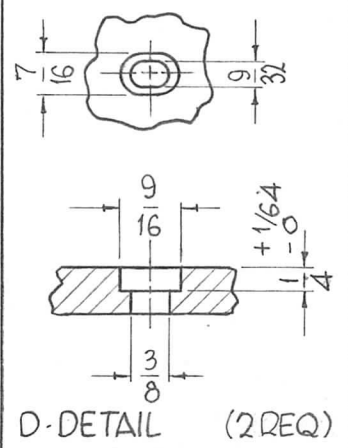


HOLES

A-DRILL & TAP 10-32 X 9/16 DEEP. (4 REQ.)

B-DRILL & TAP 1/4-20 X 9/16 DEEP. (8 REQ.)

C-DRILL & TAP 1/4-20 X 3/8 DEEP. (4 REQ.)



						REQ. ITEM	PART NO.	F. BUDETTI	DESCRIPTION	SYMBOL		
							1/2 THICK		THE TECHNICAL MATERIEL CORP.			
							STOCK SIZE		MAMARONECK.			
							ALUMINUM		NEW YORK			
									PLATE, SIDE, RIGHT			
○	ORIGINAL RELEASE FOR PRODUCTION											
SYM	DESCRIPTION	DATE	CH. NO.	DRAFTS	CHECKER	ENG. APP.						
	UNLESS OTHERWISE SPECIFIED DIMENSIONS ARE IN INCHES AND INCLUDE CHEMICALLY APPLIED OR PLATED FINISHES	SCALE	1/2" = 1"				2024 - T-4		John C Biele	aa gcb RJC 3-30-64		
	DECIMALS .X ± .05 .XX ± .01 .XXX ± .005	FRACTIONS ± 1/64 ANGLES ± 0° 30'	CODE	A				TYPE & TEMPER	HEAT TREAT. SPEC.	DRAWN	CHECKED	FINAL APPROVAL
	TOLERANCES						S-245-SILVER PLATE, BRIGHT		2R AB	BC	PM-981-0	
							FINISH & SPEC. NO.	ELEC. DES. APP.	MECH. DES. APP.			