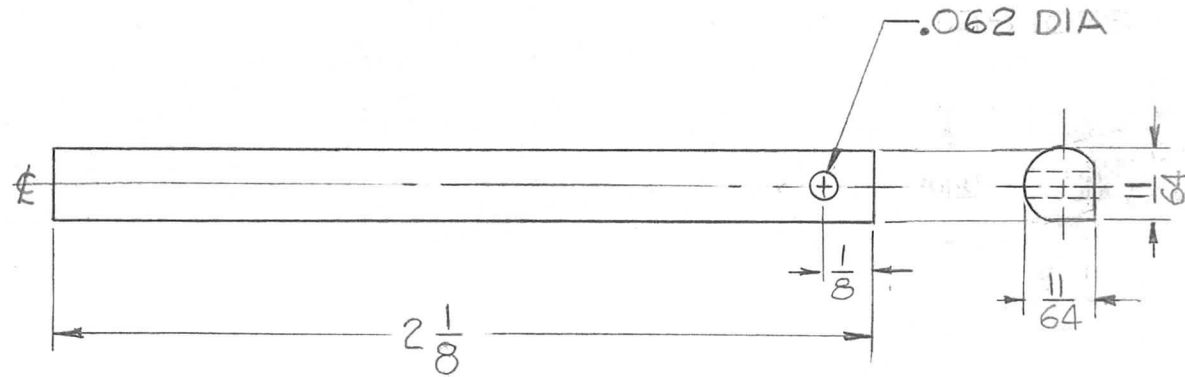


THE CONTENTS OF THIS DRAWING ARE THE EXCLUSIVE PROPERTY OF THE TECHNICAL MATERIEL CORP. ITS UNAUTHORIZED USE OR REPRODUCTION IN WHOLE OR IN PART IS STRICTLY FORBIDDEN.

REQ. PER UNIT	USED ON		
	MODEL	ASS'Y. NO.	DATE
1	HFR-1	AX-377	7-26-62

PM-800

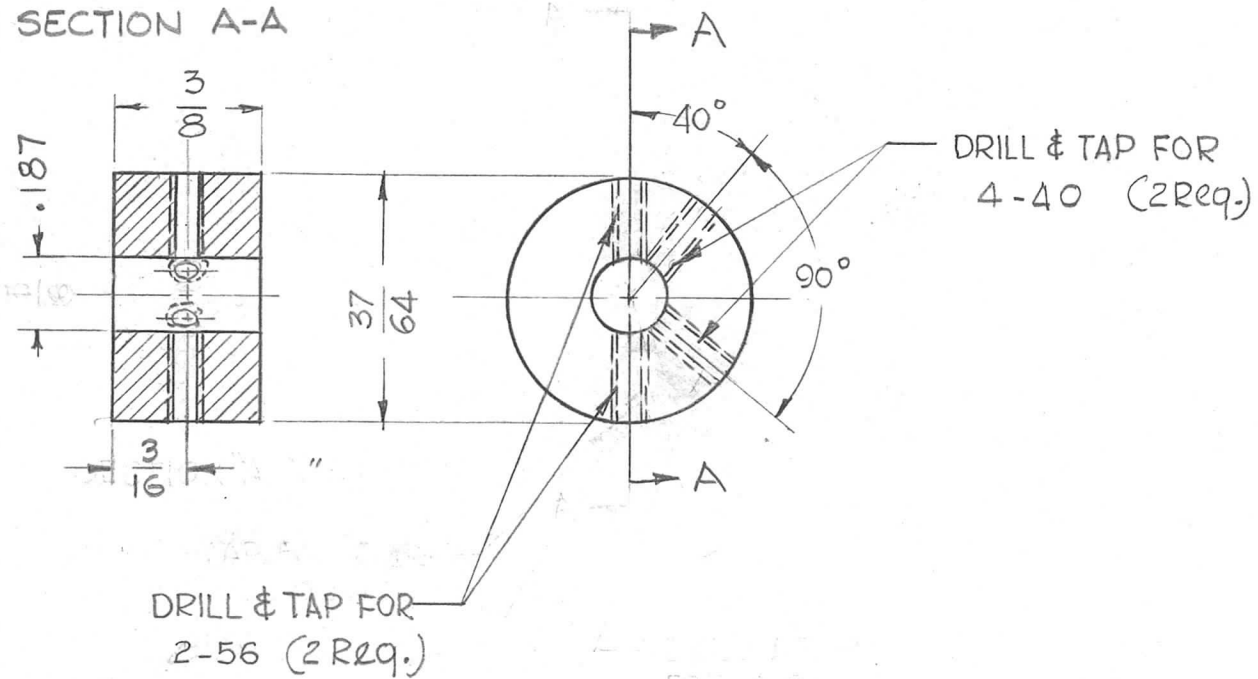


							REQ.	ITEM	PART NO.	KRUY	DESCRIPTION	SYMBOL	
									3/16 DIA. ROD.		THE TECHNICAL MATERIEL CORP. MAMARONECK, NEW YORK		
									STOCK SIZE				
									STEEL, STAINLESS		ROD, WHEEL, LOCKING		
									MATERIAL				
SYM	DESCRIPTION	DATE	CH. NO.	DRAFTS	CHECKER	ENG. APP.			# 303	G.D.L	<i>[Signature]</i>	<i>BP</i>	
UNLESS OTHERWISE SPECIFIED: DIMENSIONS ARE IN INCHES		SCALE: 3/16" = 1"		MAXIMUM ALLOWABLE TOLERANCES HAVE BEEN DETERMINED AND ANY DEVIATIONS WILL BE CAUSE FOR REJECTION. REMOVE ALL BURRS AND SHARP EDGES					TYPE & TEMPER	HEATTREAT. SPEC.	DRAWN	CHECKED	FINAL APPROVAL
TOLERANCES ON FRAC. ± 1/64 DEC. ± .005 ANGLES ± 1/2°									S104 PASSIVATE		<i>TAK</i>	PM-800	
									FINISH & SPEC. NO.	ELEC. DES. APP.	MECH. DES. APP.		

THE CONTENTS OF THIS DRAWING ARE THE EXCLUSIVE PROPERTY OF THE TECHNICAL MATERIEL CORP. ITS UNAUTHORIZED USE OR REPRODUCTION IN WHOLE OR IN PART IS STRICTLY FORBIDDEN.

REQ. PER UNIT	USED ON			PM-801
	MODEL	ASS'Y. NO.	DATE	
1	HFR-1	AX-377	7-26-62	

SECTION A-A



						REQ.	ITEM	PART NO.	KRUY	DESCRIPTION	SYMBOL
										THE TECHNICAL MATERIEL CORP.	
										MAMARONECK, NEW YORK	
										COUPLER, MTG, ROD	
SYM	DESCRIPTION	DATE	CH. NO.	DRAFTS	CHECKER	ENG. APP.					
UNLESS OTHERWISE SPECIFIED: DIMENSIONS ARE IN INCHES		SCALE: AX-377					# 303		G.D.L.	<i>HDe</i>	<i>BP</i>
TOLERANCES ON FRAC. ± 1/64 DEC. ± .005 ANGLES ± 1/2°		MAXIMUM ALLOWABLE TOLERANCES HAVE BEEN DETERMINED AND ANY DEVIATIONS WILL BE CAUSE FOR REJECTION. REMOVE ALL BURRS AND SHARP EDGES					S104 PASSIVATE		DRAWN	CHECKED	FINAL APPROVAL
							FINISH & SPEC. NO.		ELEC. DES. APP.	MECH. DES. APP.	PM-801

THE CONTENTS OF THIS DRAWING ARE THE EXCLUSIVE PROPERTY OF THE TECHNICAL MATERIEL CORP. ITS UNAUTHORIZED USE OR REPRODUCTION IN WHOLE OR IN PART IS STRICTLY FORBIDDEN.

REQ. PER UNIT

1

MODEL  
HFR-1

USED ON

ASS'Y. NO.  
AX-378

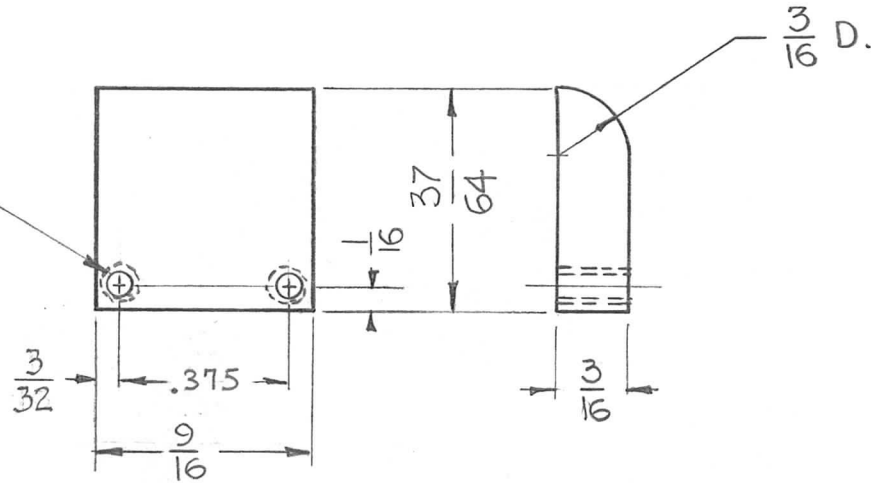
DATE

7-26-62

PM-805

A

DRILL & TAP FOR 2-56B.H.



REQ.	ITEM	PART NO.	DESCRIPTION	SYMBOL					
		KRUY	COVER, SLIDE INDICATOR	A					
STOCK SIZE			THE TECHNICAL MATERIEL CORP. MAMARONECK, NEW YORK						
MATERIAL			BRASS						
TYPE & TEMPER			1/2 HARD						
HEAT TREAT. SPEC.			NONE						
FINISH & SPEC. NO.									
UNLESS OTHERWISE SPECIFIED: DIMENSIONS ARE IN INCHES TOLERANCES ON FRAC. ± 1/64 DEC. ± .005 ANGLES ± 1/2°		SCALE: DO NOT SCALE MAXIMUM ALLOWABLE TOLERANCES HAVE BEEN DETERMINED AND ANY DEVIATIONS WILL BE CAUSE FOR REJECTION. REMOVE ALL BURRS AND SHARP EDGES							
SYM	DESCRIPTION	DATE	CH. NO.	DRAFTS	CHECKER	ENG. APP.	DRAWN	CHECKED	FINAL APPROVAL
							G.D.L.	H.O.	
								T.A.K.	PM-805

THE CONTENTS OF THIS DRAWING ARE THE EXCLUSIVE PROPERTY OF THE TECHNICAL MATERIEL CORP. ITS UNAUTHORIZED USE OR REPRODUCTION IN WHOLE OR IN PART IS STRICTLY FORBIDDEN.

REQ. PER UNIT

1

USED ON

MODEL

HFR-1

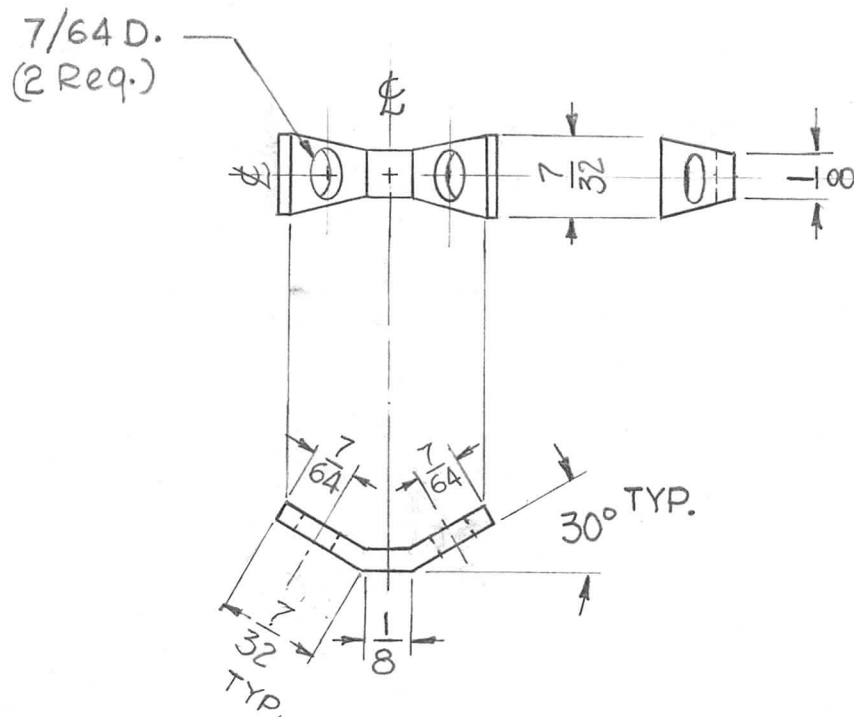
ASS'Y. NO.

AX-378

DATE

7-26-62

PM-806



SYM	DESCRIPTION	DATE	CH. NO.	DRAFTS	CHECKER	ENG. APP.	REQ. ITEM	PART NO.	KRUY	DESCRIPTION	SYMBOL
								1/16 THK. STOCK SIZE		THE TECHNICAL MATERIEL CORP. MAMARONECK, NEW YORK	
								BRASS		BRACKET, WING	
								MATERIAL			
							1/2 HARD		G.D.L.	J.We	
							TYPE & TEMPER	HEAT TREAT. SPEC.	DRAWN	CHECKED	FINAL APPROVAL
							NONE			T.A.K.	PM-806
							FINISH & SPEC. NO.		ELEC. DES. APP.	MECH. DES. APP.	

UNLESS OTHERWISE SPECIFIED:  
DIMENSIONS ARE IN INCHES  
TOLERANCES ON  
FRAC. ± 1/64 DEC. ± .005 ANGLES ± 1/2°

SCALE: DO NOT SCALE  
MAXIMUM ALLOWABLE TOLERANCES HAVE BEEN DETERMINED AND ANY DEVIATIONS WILL BE CAUSE FOR REJECTION.  
REMOVE ALL BURRS AND SHARP EDGES

THE CONTENTS OF THIS DRAWING ARE THE EXCLUSIVE PROPERTY OF THE TECHNICAL MATERIEL CORP. ITS UNAUTHORIZED USE OR REPRODUCTION IN WHOLE OR IN PART IS STRICTLY FORBIDDEN.

REQ. PER UNIT

1

MODEL

HFR-1

USED ON

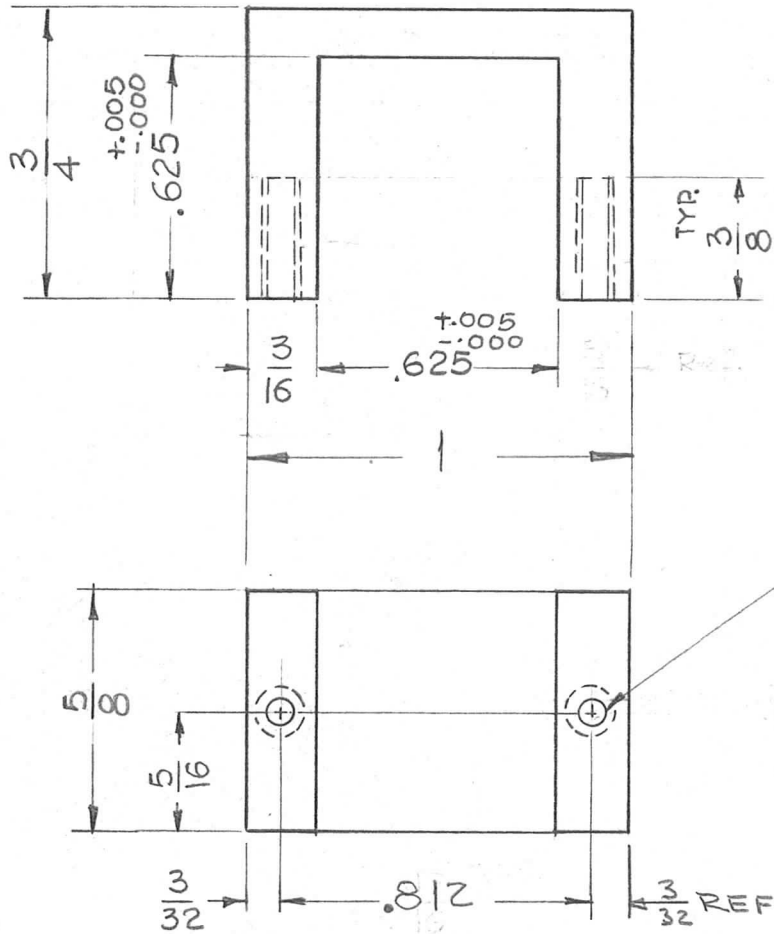
ASSY. NO.

AX-379

DATE

7-26-62

PM-807



DRILL & TAP FOR  
2-56 (2 REQ.)

REQ.	ITEM	PART NO.	DESCRIPTION	SYMBOL							
		KRUY	THE TECHNICAL MATERIEL CORP. MAMARONECK, NEW YORK								
		STOCK SIZE	HOUSING, WHEEL, LOCKING								
		BRASS									
		MATERIAL									
SYM	DESCRIPTION	DATE	CH. NO.	DRAFTS	CHECKER	ENG. APP.	1/2 HARD	G.D.L.	JAC	BP	
UNLESS OTHERWISE SPECIFIED: DIMENSIONS ARE IN INCHES TOLERANCES ON FRAC. ± 1/64 DEC. ± .005 ANGLES ± 1/2°		SCALE: 1 AX-379		MAXIMUM ALLOWABLE TOLERANCES HAVE BEEN DETERMINED AND ANY DEVIATIONS WILL BE CAUSE FOR REJECTION. REMOVE ALL BURRS AND SHARP EDGES			NONE			TAK	PM-807
							FINISH & SPEC. NO.	ELEC. DES. APP.	MECH. DES. APP.		

THE CONTENTS OF THIS DRAWING ARE THE EXCLUSIVE PROPERTY OF THE TECHNICAL MATERIEL CORP. ITS UNAUTHORIZED USE OR REPRODUCTION IN WHOLE OR IN PART IS STRICTLY FORBIDDEN.

REQ. PER UNIT

2

MODEL

HFR-1

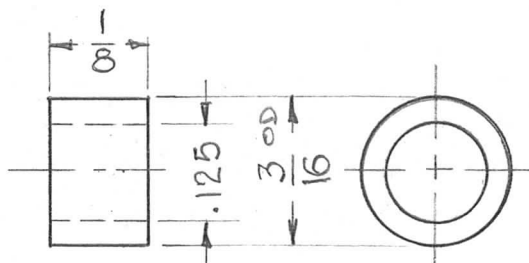
USED ON

ASS'Y. NO.

DATE

7-26-62

PM-808



SYM	DESCRIPTION	DATE	CH. NO.	DRAFTS	CHECKER	ENG. APP.	REQ. ITEM	PART NO.	DESCRIPTION	SYMBOL
									THE TECHNICAL MATERIEL CORP. MAMARONECK, NEW YORK	
								STOCK SIZE		
								ALUMINUM	SPACER, PANEL MOUNTING	
								MATERIAL		
								5052-H32	G.D.L. <i>hde</i>	<i>BS</i>
								TYPE & TEMPER	CHECKED	FINAL APPROVAL
								S404 YEL. IRIDITE	T.A.K.	PM-808
								FINISH & SPEC. NO.	ELEC. DES. APP.	MECH. DES. APP.

UNLESS OTHERWISE SPECIFIED:  
DIMENSIONS ARE IN INCHES  
TOLERANCES ON  
FRAC. ± 1/64 DEC. ± .005 ANGLES ± 1/2°

SCALE: DO NOT SCALE  
MAXIMUM ALLOWABLE TOLERANCES HAVE BEEN DETERMINED AND ANY DEVIATIONS WILL BE CAUSE FOR REJECTION.  
REMOVE ALL BURRS AND SHARP EDGES

THE CONTENTS OF THIS DRAWING ARE THE EXCLUSIVE PROPERTY OF THE TECHNICAL MATERIEL CORP. ITS UNAUTHORIZED USE OR REPRODUCTION IN WHOLE OR IN PART IS STRICTLY FORBIDDEN.

REQ. PER UNIT

1

MODEL

TRX-1

USED ON

ASS'Y. NO.

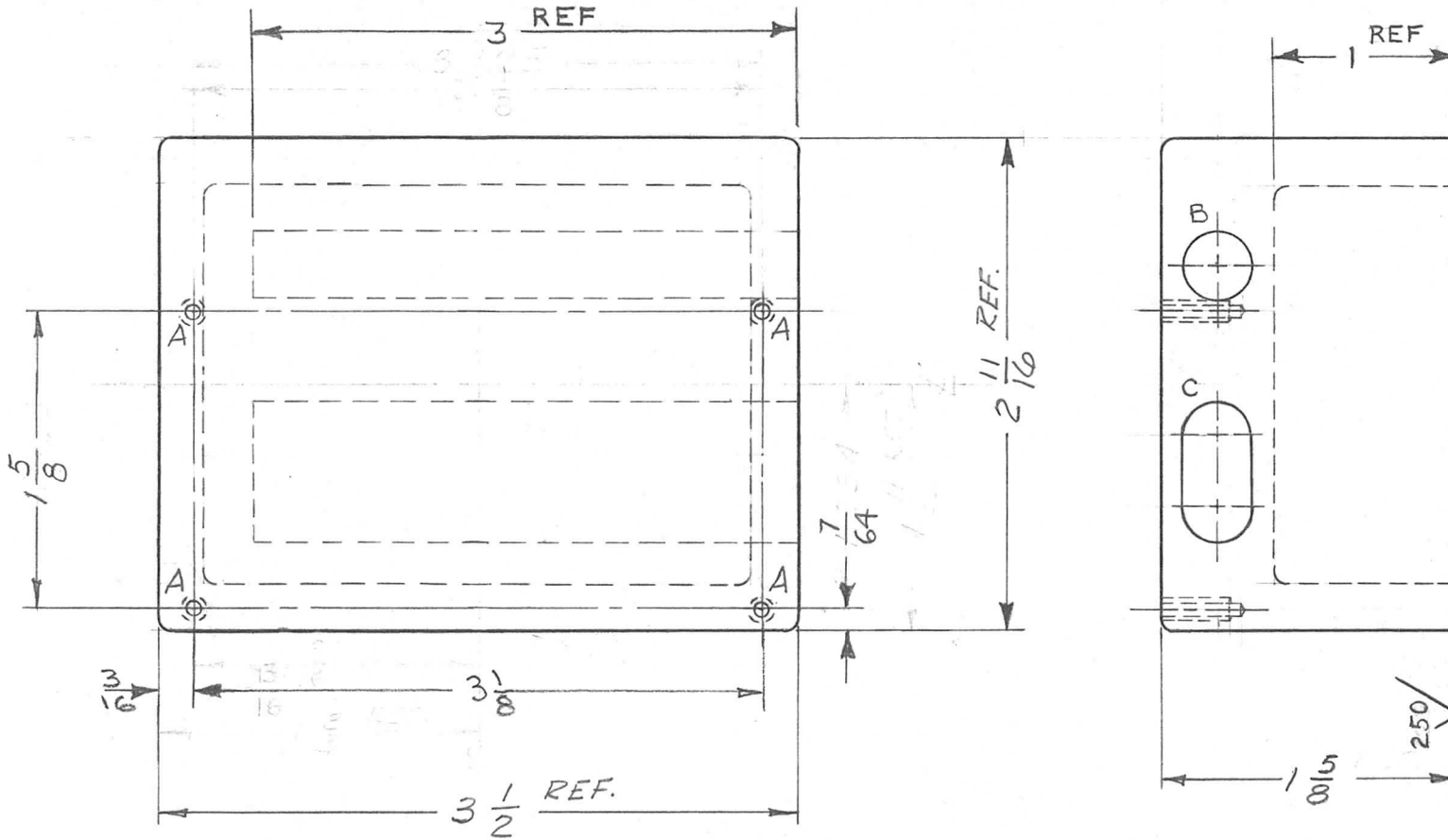
AO-III

DATE

8-27-62

PM-812

A



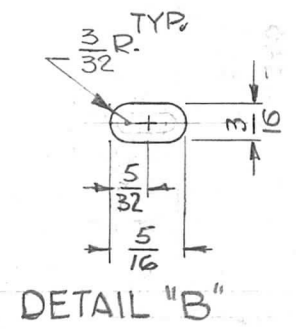
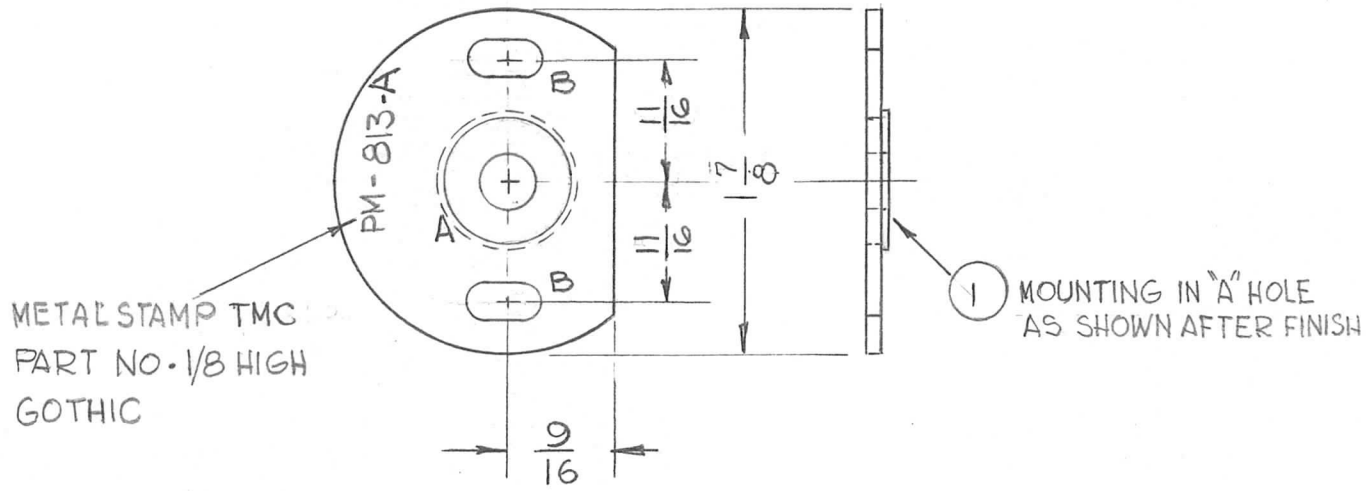
SYM.	DESCRIPTION	REQ'D
A	#36(106) DE., T/16 DEEP 6-32 NC-2, 3/8 DEEP	4
B	13/32 DIA X 3" DEEP	1
C	13/32 X 2 5/32 OVAL X 3" DEEP	1

REQ.	ITEM	PART NO.	J. STRUMER	DESCRIPTION	SYMBOL	
			THE TECHNICAL MATERIEL CORP. MAMARONECK, NEW YORK			
		CS-126 (CASTING)	HEATER, MACHINING, XTAL			
			MATERIAL			
A	B & C HOLES ADDED TO PICT. & BUILDUP	12/27/63 10659	JMA	3/13/63	BP	
SYM	DESCRIPTION	DATE	CH. NO.	DRAFTS	CHECKER	ENG. APP.
UNLESS OTHERWISE SPECIFIED: DIMENSIONS ARE IN INCHES TOLERANCES ON FRAC. ± 1/64 DEC. ± .005 ANGLES ± 1/2°		SCALE: FULL MAXIMUM ALLOWABLE TOLERANCES HAVE BEEN DETERMINED AND ANY DEVIATIONS WILL BE CAUSE FOR REJECTION. REMOVE ALL BURRS AND SHARP EDGES				
		TYPE & TEMPER	HEATTREAT. SPEC.	DRAWN	CHECKED	FINAL APPROVAL
				JMA	D. Noorani 3-13-63	PM-812 A
		FINISH & SPEC. NO.	ELEC. DES. APP.	MECH. DES. APP.		

THE CONTENTS OF THIS DRAWING ARE THE EXCLUSIVE PROPERTY OF THE TECHNICAL MATERIEL CORP. ITS UNAUTHORIZED USE OR REPRODUCTION IN WHOLE OR IN PART IS STRICTLY FORBIDDEN.

REQ. PER UNIT 2	USED ON		PM-813	A
	MODEL GPR-92	ASS'Y. NO.		

HOLE	DESCRIPTION	REQ.
A	.6249-.6246 DIA.	1
B	SEE DETAIL	2



						1	1	BB-126-5	BEARING, BALL	A	
						REQ.	ITEM	PART NO.	DESCRIPTION	SYMBOL	
								1/16 THK. STOCK SIZE	THE TECHNICAL MATERIEL CORP. MAMARONECK, NEW YORK		
								ALUMINUM	PLATE, MOUNTING, BEARING		
A	DIMS CLARIFIED	11-30-62	7758								
SYM	DESCRIPTION	DATE	CH. NO.	DRAFTS	CHECKER	ENG. APP.					
UNLESS OTHERWISE SPECIFIED: DIMENSIONS ARE IN INCHES TOLERANCES ON FRAC. ± 1/64 DEC. ± .005 ANGLES ± 1/2°		SCALE: DO NOT SCALE				5052-H32		G.D.L.			
		MAXIMUM ALLOWABLE TOLERANCES HAVE BEEN DETERMINED AND ANY DEVIATIONS WILL BE CAUSE FOR REJECTION. REMOVE ALL BURRS AND SHARP EDGES				TYPE & TEMPER	HEATTREAT. SPEC.	DRAWN	CHECKED	FINAL APPROVAL	
						YELLOW IRIDITE 5404			D.M.	PM-813	A
						FINISH & SPEC. NO.		ELEC. DES. APP.	MECH. DES. APP.		



THE CONTENTS OF THIS DRAWING ARE THE EXCLUSIVE PROPERTY OF THE TECHNICAL MATERIEL CORP. ITS UNAUTHORIZED USE FOR REPRODUCTION IN WHOLE OR IN PART IS STRICTLY FORBIDDEN.

REQ. PER UNIT

1

USED ON

MODEL

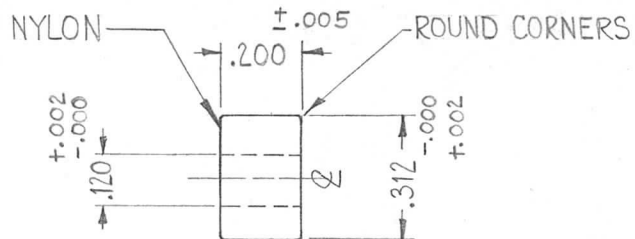
HFR-1

ASS'Y. NO.

DATE

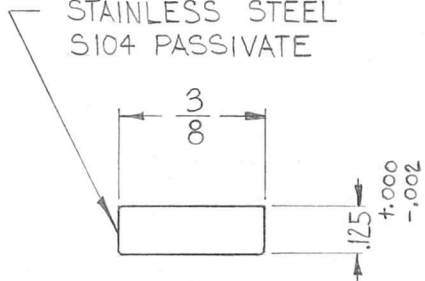
10-31-62

PM-814

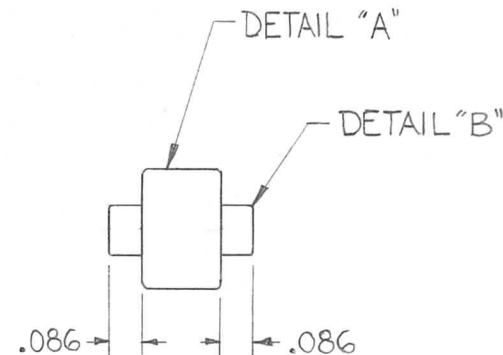


"A" DETAIL

STAINLESS STEEL  
S104 PASSIVATE



"B" DETAIL



SYM	DESCRIPTION	DATE	CH. NO.	DRAFTS	CHECKER	ENG. APP.	REQ. ITEM	PART NO.	DESCRIPTION	SYMBOL		
								KRUY	THE TECHNICAL MATERIEL CORP. MAMARONECK, NEW YORK			
								STOCK SIZE	ROLLER, DETENT			
								MATERIAL				
UNLESS OTHERWISE SPECIFIED DIMENSIONS ARE IN INCHES AND INCLUDE CHEMICALLY APPLIED OR PLATED FINISHES		SCALE 2X (DO NOT SCALE)						W.A. FRANCO	<i>Jhe</i>	<i>BP</i>		
TOLERANCES		FRACTIONS		CODE				TYPE & TEMPER	HEAT TREAT. SPEC.	DRAWN	CHECKED	FINAL APPROVAL
.X ± .05		± 1/64										
.XX ± .01		ANGLES										
.XXX ± .005		± 0° 30'										
								FINISH & SPEC. NO.	ELEC. DES. APP.	MECH. DES. APP.	PM-814	

THE CONTENTS OF THIS DRAWING ARE THE EXCLUSIVE PROPERTY OF THE TECHNICAL MATERIEL CORP. ITS UNAUTHORIZED USE FOR REPRODUCTION IN WHOLE OR IN PART IS STRICTLY FORBIDDEN.

REQ. PER UNIT

2

MODEL

GPR-92

USED ON

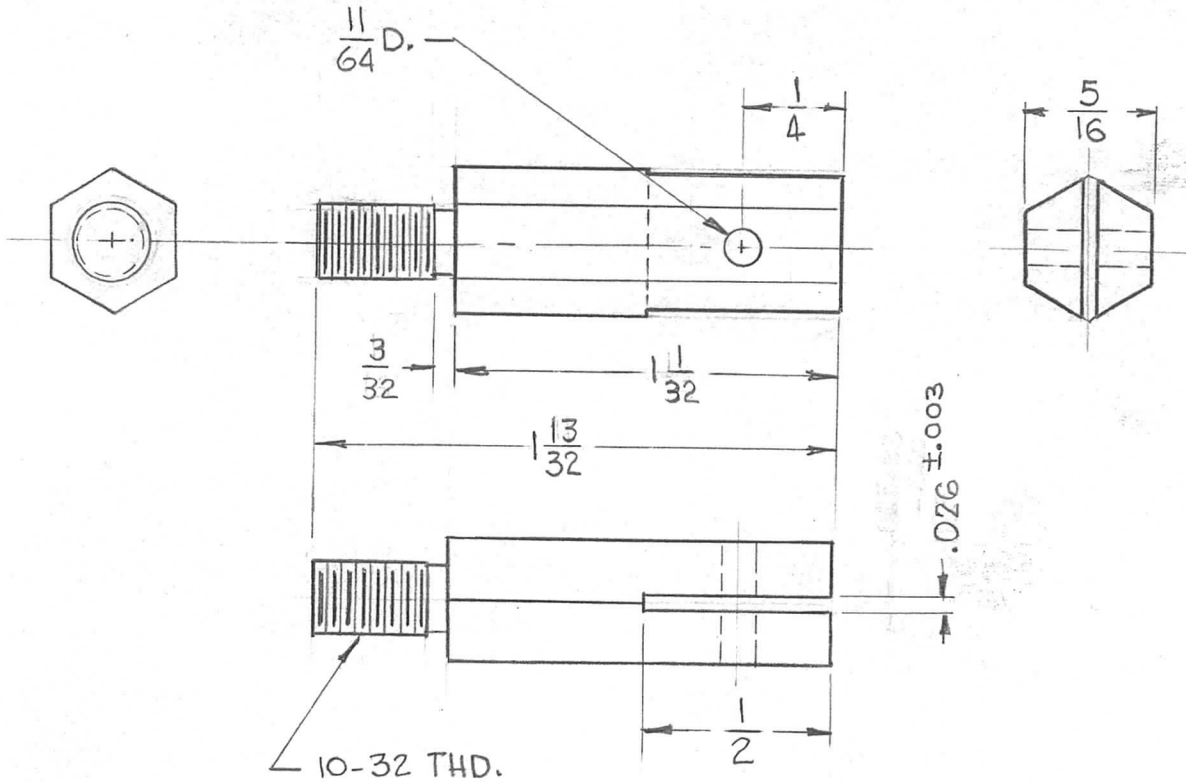
ASS'Y. NO.

DATE

11-6-62

PM-816

B

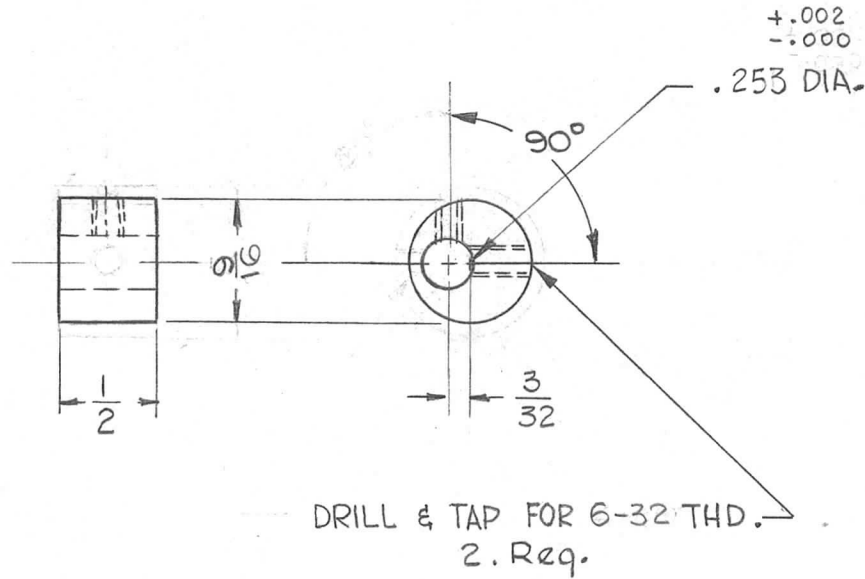


REQ. ITEM	PART NO.	STRUMER	DESCRIPTION	SYMBOL
B	5/16 (ACROSS FLAT) HEX ROD		THE TECHNICAL MATERIEL CORP. MAMARONECK, NEW YORK	
A	BRASS		PIN, HOLDER, SPRING	
UNLESS OTHERWISE SPECIFIED DIMENSIONS ARE IN INCHES AND INCLUDE CHEMICALLY APPLIED OR PLATED FINISHES		SCALE DO NOT SCALE		
DECIMALS .X ± .05 .XX ± .01 .XXX ± .005	FRACTIONS ± 1/64 ANGLES, ± 0° 30'	CODE		
TOLERANCES				
FREE TURNING	HEAT TREAT. SPEC.	DRAWN	CHECKED	FINAL APPROVAL
NONE		JMA	D.M.	PM-816 B
FINISH & SPEC. NO.	ELEC. DES. APP.	MECH. DES. APP.		

THE CONTENTS OF THIS DRAWING ARE THE EXCLUSIVE PROPERTY OF THE TECHNICAL MATERIEL CORP. ITS UNAUTHORIZED USE FOR REPRODUCTION IN WHOLE OR IN PART IS STRICTLY FORBIDDEN.

REQ. PER UNIT	USED ON		
	MODEL	ASS'Y. NO.	DATE
2	GPR-92	A-3095	11-7-62

PM-817 C



SYM	DESCRIPTION	DATE	CH. NO.	DRAFTS	CHECKER	ENG. APP.	REQ. ITEM	PART NO.	STRUMER DESCRIPTION	SYMBOL	
C	IN REVISION BLOCK CHG. NO. 9296 WAS 9269	11/2/63	10362	<i>MT</i>	<i>MT</i>	<i>MT</i>	5/8 DIA. ROD		THE TECHNICAL MATERIEL CORP. MAMARONECK, NEW YORK		
B	DRILL & TAP WAS FOR 4-40 THD.	9-23-63	9984	G.D.L.	<i>MT</i>	<i>MT</i>	STOCK SIZE				
A	RELOCATED TAPPED HOLE PART WAS 5/8 DIA, THD WAS 3-48	G-763	9296	<i>MT</i>	<i>MT</i>	<i>MT</i>	BRASS		CAM, LOCK, TUNING		
UNLESS OTHERWISE SPECIFIED DIMENSIONS ARE IN INCHES AND INCLUDE CHEMICALLY APPLIED OR PLATED FINISHES							SCALE				
							DO NOT SCALE				
DECIMALS .X ± .05 .XX ± .01 .XXX ± .005							FRACTIONS ± 1/64 ANGLES ± 0° 30'	TOLERANCES			
CODE							FINISH & SPEC. NO.	ELEC. DES. APP.	MECH. DES. APP.	FINAL APPROVAL	
							NONE	<i>MT</i>	<i>D.M.</i>	<i>MT</i> <i>BP</i>	PM-817 C

THE CONTENTS OF THIS DRAWING ARE THE EXCLUSIVE PROPERTY OF THE TECHNICAL MATERIEL CORP. ITS UNAUTHORIZED USE FOR REPRODUCTION IN WHOLE OR IN PART IS STRICTLY FORBIDDEN.

REQ. PER UNIT

2

USED ON

MODEL

GPR-92

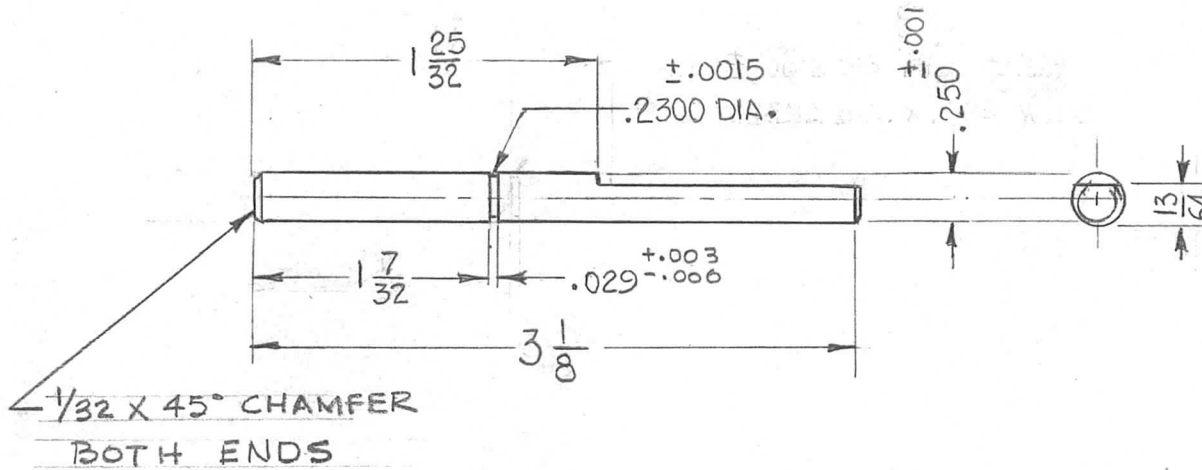
ASS'Y. NO.

A-3095

DATE

11-7-62

PM-818



REQ.	ITEM	PART NO.	STRUMER	DESCRIPTION	SYMBOL
		.250 DIA. ROD		THE TECHNICAL MATERIEL CORP. MAMARONECK, NEW YORK	
		STOCK SIZE			
		BRASS, FREE TURN		SHAFT, CAM, LOCK	
		MATERIAL			
		FREE TURNING	G.D.L.	<i>AD</i>	<i>AMA BP</i>
		TYPE & TEMPER	DRAWN	CHECKED	FINAL APPROVAL
		HEAT TREAT. SPEC.	<i>AMA</i>	<i>D.M.</i>	PM-818
		NICKEL PLATE PER S-135			
		FINISH & SPEC. NO.	ELEC. DES. APP.	MECH. DES. APP.	

UNLESS OTHERWISE SPECIFIED DIMENSIONS ARE IN INCHES AND INCLUDE CHEMICALLY APPLIED OR PLATED FINISHES

SCALE DO NOT SCALE

DECIMALS .X ± .05 .XX ± .01 .XXX ± .005

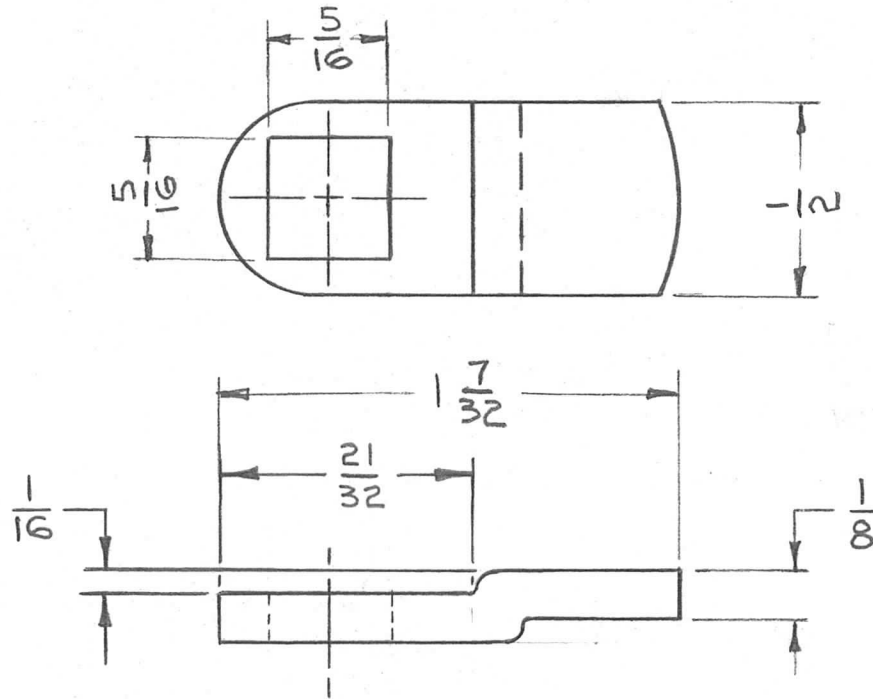
FRACTIONS ± 1/64 ANGLES ± 0° 30'

TOLERANCES

THE CONTENTS OF THIS DRAWING ARE THE EXCLUSIVE PROPERTY OF THE TECHNICAL MATERIEL CORP. ITS UNAUTHORIZED USE OR REPRODUCTION IN WHOLE OR IN PART IS STRICTLY FORBIDDEN.

REQ. PER UNIT	USED ON		
	MODEL	ASS'Y. NO.	DATE
1	RAK-215		

PM-824



REF: CORBIN LOCK Co. (CAM # C2S) MODIFIED PER TMC REQUIREMENTS.

REQ.	ITEM	PART NO.	DESCRIPTION	SYMBOL					
		1/8 THK	THE TECHNICAL MATERIEL CORP.						
		STOCK SIZE	MAMARONECK, NEW YORK						
		STEEL	CAM, LOCK						
		MATERIAL							
SYM	DESCRIPTION	DATE	CH. NO.	DRAFTS	CHECKER	ENG. APP.			
UNLESS OTHERWISE SPECIFIED:		SCALE: NO SCALE		DRAWN		CHECKED		FINAL APPROVAL	
DIMENSIONS ARE IN INCHES		MAXIMUM ALLOWABLE TOLERANCES HAVE BEEN DETERMINED AND ANY DEVIATIONS WILL BE CAUSE FOR REJECTION.		NICKEL PLATE		TRK		PM-824	
TOLERANCES ON		REMOVE ALL BURRS AND SHARP EDGES		S-135		ELEC. DES. APP.		MECH. DES. APP.	
FRAC. ± 1/64 DEC. ± .005 ANGLES ± 1/2°				FINISH & SPEC. NO.					

THE CONTENTS OF THIS DRAWING ARE THE EXCLUSIVE PROPERTY OF THE TECHNICAL MATERIEL CORP. ITS UNAUTHORIZED USE FOR REPRODUCTION IN WHOLE OR IN PART IS STRICTLY FORBIDDEN.

REQ. PER UNIT

4

USED ON

MODEL

RAK-21

ASS'Y. NO.

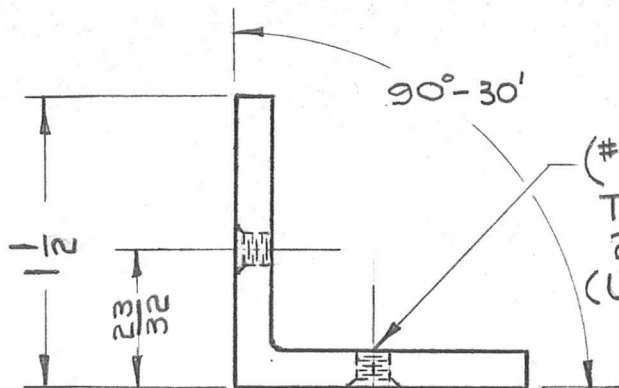
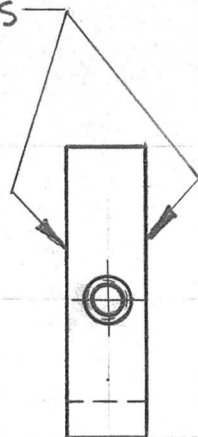
A-3126

DATE

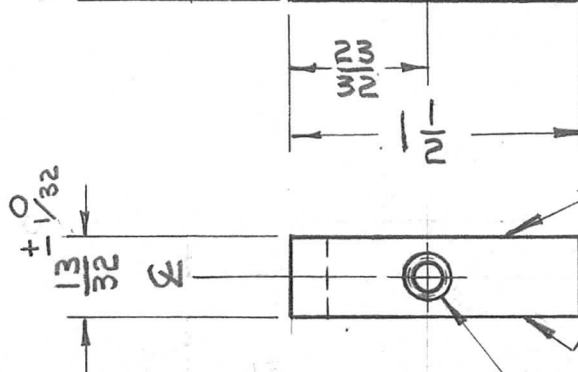
12-26

PM-826

THESE SURFACES TO BE FREE OF BURRS



(#21).159 DIA  
TAP #10-32 NF  
2 HOLES  
(USE DRILL JIG)



THESE SURFACES TO BE FREE OF BURRS

CSK 82° x .250 DIA  
2 PLACES

NOTES:

1. REMOVE ALL BURRS AND SHARP EDGES

REQ.	ITEM	PART NO.	DESCRIPTION	SYMBOL
		1 1/2 x 1 1/2 x 3/16 THK	THE TECHNICAL MATERIEL CORP. MAMARONECK, NEW YORK	BRACE, ANGLE CORNER
		STOCK SIZE		
		EXTR'D ALUMINUM		
		MATERIAL		
		6063-T5		
		TYPE & TEMPER	HEAT TREAT. SPEC.	
		CLEAR IRIDIPT S-404		
		FINISH & SPEC. NO.	ELEC. DES. APP.	MECH. DES. APP.
				PM-826

SYM	DESCRIPTION	DATE	CH. NO.	DRAFTS	CHECKER	ENG. APP.
	UNLESS OTHERWISE SPECIFIED DIMENSIONS ARE IN INCHES AND INCLUDE CHEMICALLY APPLIED OR PLATED FINISHES					
	SCALE	NO SCALE				
	DECIMALS	FRACTIONS	CODE			
	.X ± .05	± 1/64				
	.XX ± .01	ANGLES				
	.XXX ± .005	± 0° 30'				

THE CONTENTS OF THIS DRAWING ARE THE EXCLUSIVE PROPERTY OF THE TECHNICAL MATERIEL CORP. ITS UNAUTHORIZED USE OR REPRODUCTION IN WHOLE OR IN PART IS STRICTLY FORBIDDEN.

REQ. PER UNIT

1

MODEL

RAK-21

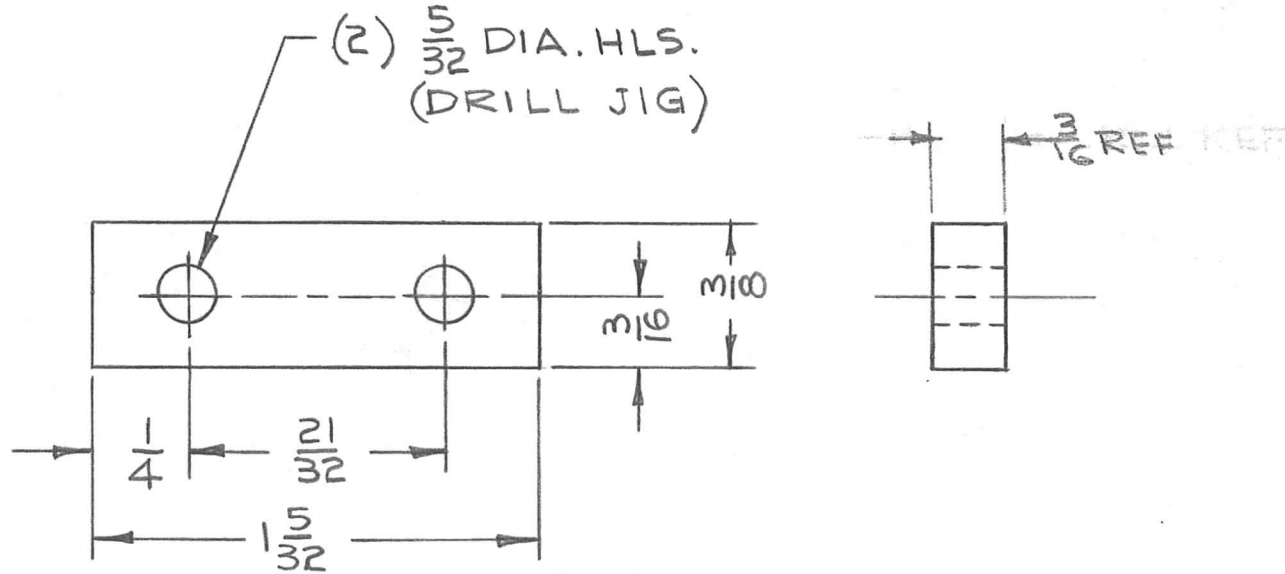
USED ON

ASS'Y. NO.

DATE

A-3126

PM-827

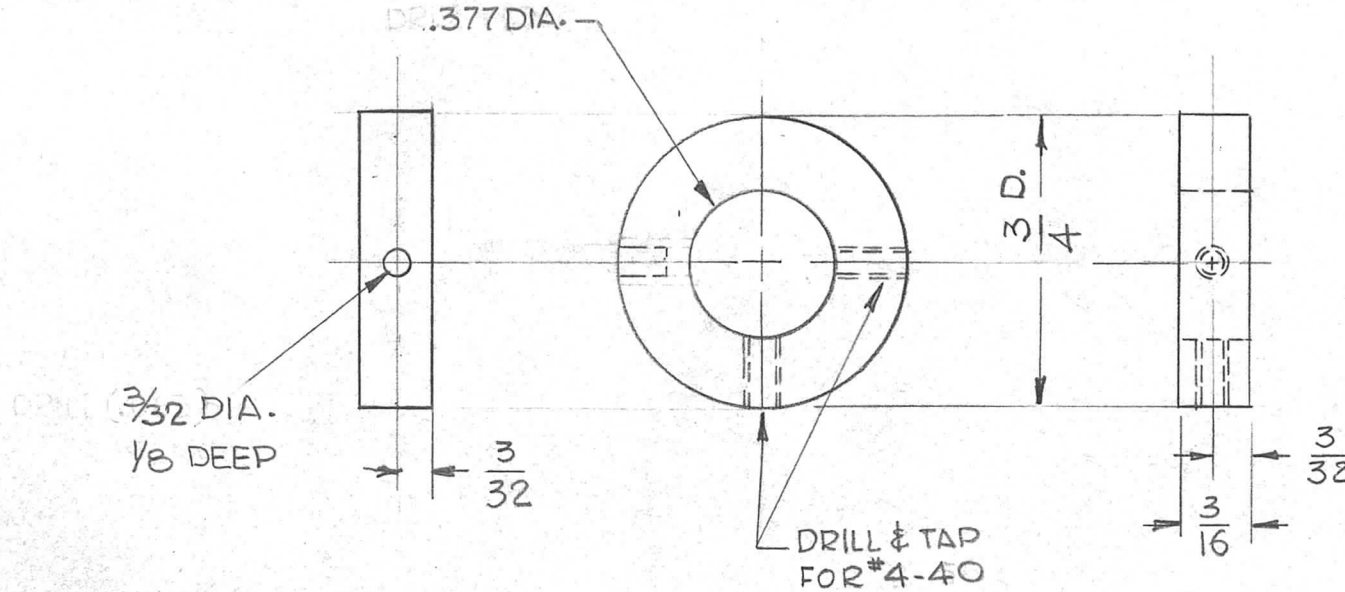


REQ.	ITEM	PART NO.	KRUY		DESCRIPTION	SYMBOL
		$\frac{3}{16}$ THK	THE TECHNICAL MATERIEL CORP.			
		STOCK SIZE	MAMARONECK, NEW YORK			
		ALUMINUM	SPACER, BAR			
		MATERIAL				
SYM	DESCRIPTION	DATE	CH. NO.	DRAFTS	CHECKER	ENG. APP.
	UNLESS OTHERWISE SPECIFIED: DIMENSIONS ARE IN INCHES TOLERANCES ON FRAC. $\pm 1/64$ DEC. $\pm .005$ ANGLES $\pm 1/2^\circ$					
	SCALE: NO SCALE					
	MAXIMUM ALLOWABLE TOLERANCES HAVE BEEN DETERMINED AND ANY DEVIATIONS WILL BE CAUSE FOR REJECTION. REMOVE ALL BURRS AND SHARP EDGES					
		3052-H32				
		TYPE & TEMPER	HEAT TREAT. SPEC.			
		CLEAR IRIDITE S-404				
		FINISH & SPEC. NO.	ELEC. DES. APP.	MECH. DES. APP.		
						PM-827

THE CONTENTS OF THIS DRAWING ARE THE EXCLUSIVE PROPERTY OF THE TECHNICAL MATERIEL CORP. ITS UNAUTHORIZED USE FOR REPRODUCTION IN WHOLE OR IN PART IS STRICTLY FORBIDDEN.

REQ. PER UNIT	USED ON		
	MODEL	ASS'Y. NO.	DATE
1	GPR-92	A-3128	2-21-62

PM-833 A



REQ.	ITEM	PART NO.	STRUMER DESCRIPTION				SYMBOL
		3/4 O.D.	THE TECHNICAL MATERIEL CORP.				
		STOCK SIZE	MAMARONECK, NEW YORK				
		ALUMINUM	COLLAR, SHAFT				
		MATERIAL					
		2024-T3	G.D.L.	J.H.	BP		
		TYPE & TEMPER	DRAWN	CHECKED	FINAL APPROVAL		
		S404 IRIDITE	JMA	MP	PM-833	A	
		FINISH & SPEC. NO.	ELEC. DES. APP.	MECH. DES. APP.			

UNLESS OTHERWISE SPECIFIED DIMENSIONS ARE IN INCHES AND INCLUDE CHEMICALLY APPLIED OR PLATED FINISHES	SCALE DO NOT SCALE	DATE	CH. NO.	DRAFTS	CHECKER	ENG. APP.
DECIMALS .X ± .05 .XX ± .01 .XXX ± .005	FRACTIONS ± 1/64 ANGLES ± 0° 30'	TOLERANCES	CODE			



THE CONTENTS OF THIS DRAWING ARE THE EXCLUSIVE PROPERTY OF THE TECHNICAL MATERIEL CORP. ITS UNAUTHORIZED USE FOR REPRODUCTION IN WHOLE OR IN PART IS STRICTLY FORBIDDEN.

REQ. PER UNIT

USED ON

MODEL

ASS'Y. NO.

DATE

14

TFR-5000-3000

A-3130

3-5-63

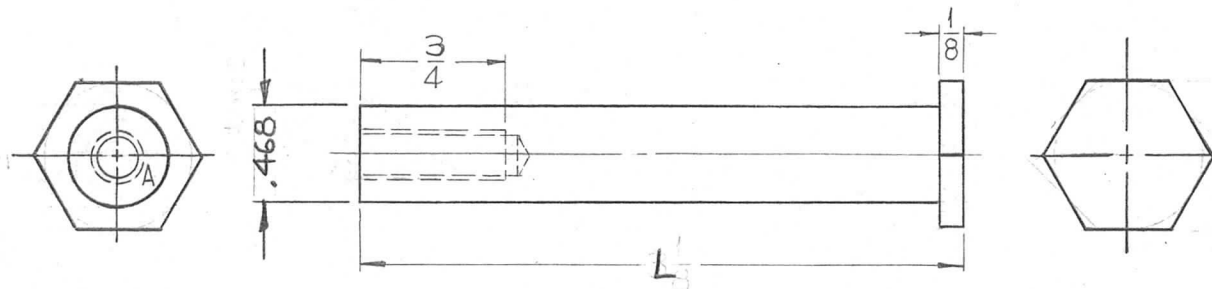
PM-834

B

TMC NO.	L	UNIT	REQ
PM-834-1	3-1/8	TFR-5000-3000	14
PM-834-2	3-5/8	TFR-15K-600BF	28

HOLE:

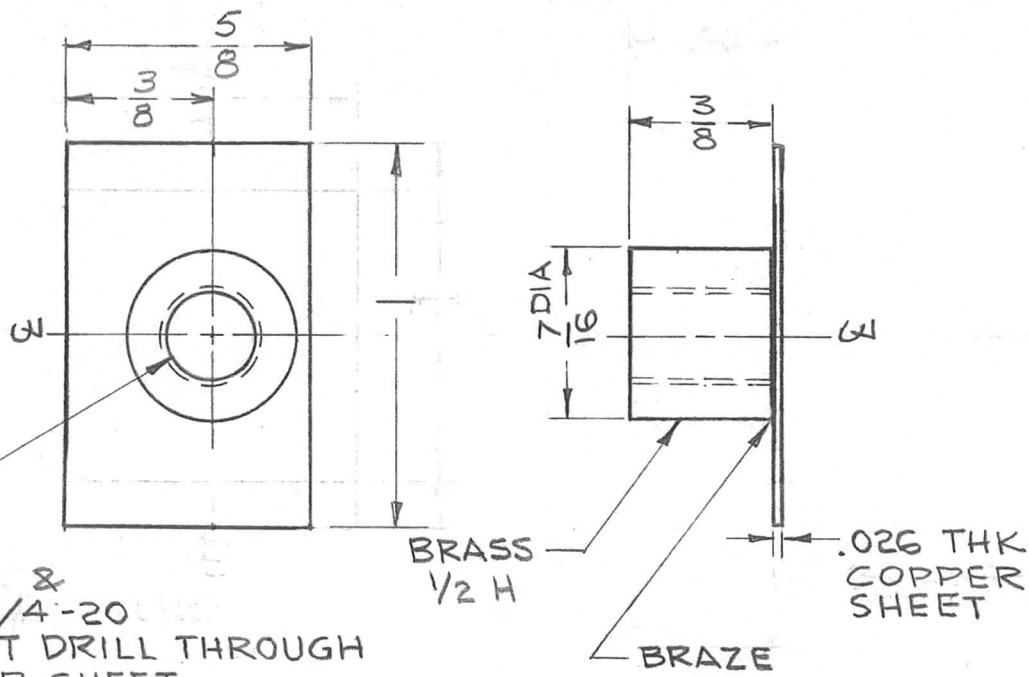
A ~ DRILL & TAP FOR  
1/4-20.



REQ.	ITEM	PART NO.	F. BUDETTI	DESCRIPTION	SYMBOL										
		3/4 HEX. ROD		THE TECHNICAL MATERIEL CORP. MAMARONECK. NEW YORK											
B	SEE EMN#10877	2/10/64 10877 A.M. TR		RETAINER, SPRING											
A	.468 ± .005 DIA WAS 1/2 DIA. STOCK WAS 3/4 DIAROD.	8-6-63 9723 AIL. JAB													
SYM	DESCRIPTION	DATE	CH. NO.	DRAFTS	CHECKER	ENG. APP.	MATERIAL								
UNLESS OTHERWISE SPECIFIED DIMENSIONS ARE IN INCHES AND INCLUDE CHEMICALLY APPLIED OR PLATED FINISHES		SCALE		5052-H32		SRG	aa	BP							
DECIMALS .X ± .05 .XX ± .01 .XXX ± .005		FRACTIONS ± 1/64 ANGLES ± 0° 30'		CODE		TYPE & TEMPER 5404 YELLOW IRIDITE		HEAT TREAT. SPEC.		DRAWN ELEC. DES. APP.		CHECKED MECH. DES. APP.		FINAL APPROVAL PM-834 B	
TOLERANCES						FINISH & SPEC. NO.									

THE CONTENTS OF THIS DRAWING ARE THE EXCLUSIVE PROPERTY OF THE TECHNICAL MATERIEL CORP. ITS UNAUTHORIZED USE FOR REPRODUCTION IN WHOLE OR IN PART IS STRICTLY FORBIDDEN.

REQ. PER UNIT	USED ON			PM-836	B
	MODEL	ASS'Y. NO.	DATE		
1	TU-2		4-2-63		



DRILL & TAP 1/4-20  
DO NOT DRILL THROUGH  
COPPER SHEET

REQ.	ITEM	PART NO.	PRITCHARD DESCRIPTION				SYMBOL
		SEE PICTORIAL STOCK SIZE	THE TECHNICAL MATERIEL CORP. MAMARONECK, NEW YORK				
B	ADDED 3/8 DIM & 5/8 WAS 3/4 DELE. REF: PM 836	5.1.68	18903	HS	EFM		
A	1" WAS 3/4	2.23.66	15836	HLA	MM		
SYM	DESCRIPTION	DATE	CH. NO.	DRAFTS	CHECKER	ENG. APP.	
UNLESS OTHERWISE SPECIFIED DIMENSIONS ARE IN INCHES AND INCLUDE CHEMICALLY APPLIED OR PLATED FINISHES		SCALE					
DECIMALS .X ± .05 .XX ± .01 .XXX ± .005	TOLERANCES	FRACTIONS ± 1/64 ANGLES ± 0° 30'	CODE				
		#	#	903	110	BP	
		TYPE & TEMPER	HEAT TREAT. SPEC.	DRAWN	CHECKED	FINAL APPROVAL	
		#					
		FINISH & SPEC. NO.	ELEC. DES. APP.	MECH. DES. APP.	PM-836 B		



THE CONTENTS OF THIS DRAWING ARE THE EXCLUSIVE PROPERTY OF THE TECHNICAL MATERIEL CORP. ITS UNAUTHORIZED USE FOR REPRODUCTION IN WHOLE OR IN PART IS STRICTLY FORBIDDEN.

REQ. PER UNIT

2

MODEL

GPT-200K

USED ON

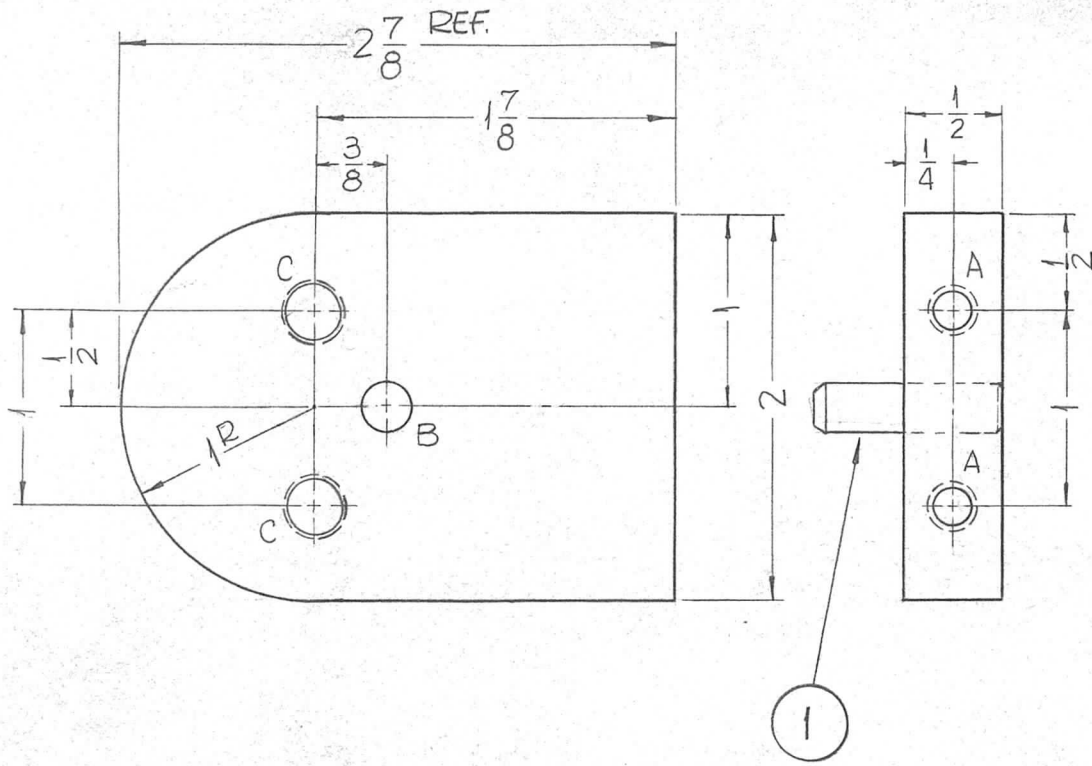
ASS'Y. NO.

AX-395

DATE

5-9-63

PM-845 0



HOLES:

- A ~ DRILL & TAP FOR 1/4-20 X 1/2 DEEP. (2REQ.)
- B ~ .249  $\pm$  .001 DIA. (1REQ.)
- C ~ DRILL & TAP FOR 5/16-18 THRU (2REQ.)

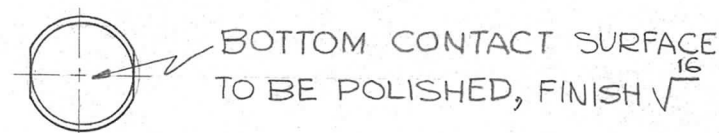
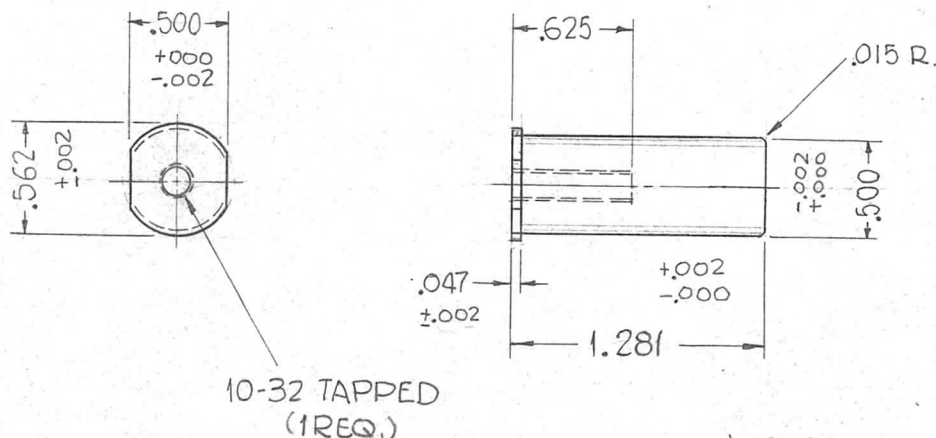
1	1	PN-116-C-8-S	PIN, DOWEL		
REQ.	ITEM	PART NO.	F. BUDETTI		DESCRIPTION
			1/2 THICK		SYMBOL
			STOCK SIZE		THE TECHNICAL MATERIEL CORP. MAMARONECK, NEW YORK
			ALUMINUM		
			MATERIAL		
			5052	H32	2 <sup>ND</sup> TT, REAR
			TYPE & TEMPER	HEAT TREAT. SPEC.	DRAWN
			S404 YELLOW IRIDITE		CHECKED
			FINISH & SPEC. NO.	ELEC. DES. APP.	MECH. DES. APP.
					PM-845 0

0	ORIGINAL RELEASE	5.16.64					
X2	PIN ADDED	3-19-64					
SYM	DESCRIPTION	DATE	CH. NO.	DRAFTS	CHECKER	ENG. APP.	
UNLESS OTHERWISE SPECIFIED DIMENSIONS ARE IN INCHES AND INCLUDE CHEMICALLY APPLIED OR PLATED FINISHES		SCALE					
DECIMALS .X $\pm$ .05 .XX $\pm$ .01 .XXX $\pm$ .005	TOLERANCES	FRACTIONS $\pm$ 1/64 ANGLES $\pm$ 0° 30'	CODE				

THE CONTENTS OF THIS DRAWING ARE THE EXCLUSIVE PROPERTY OF THE TECHNICAL MATERIEL CORP. ITS UNAUTHORIZED USE FOR REPRODUCTION IN WHOLE OR IN PART IS STRICTLY FORBIDDEN.

REQ. PER UNIT	USED ON		
	MODEL	ASS'Y. NO.	DATE
24	GPT-200K, AS-123	AX-447	12-12-62
12	GPT-200K, AS-123	AX-448	5-11-64

PM-846 0



**NOTE:**

UNLESS OTHERWISE SPECIFIED,  
 POLISH BEFORE PLATING  
 ROUND ALL EDGES. 1/32 R.  
 S-245-SILVER PLATE BRIGHT  
 RHODIUM PLATE .000010

REQ.	ITEM	PART NO.	F. BUDETTI			DESCRIPTION	SYMBOL	
		9/16 DIA. ROD	THE TECHNICAL MATERIEL CORP.					
		STOCK SIZE	MAMARONECK.					
		ROUND HARD DRAWN COPPER	NEW YORK					
0	ORIGINAL RELEASE	5.16.64		WJB		SLUG, CONTACT, BANDSWITCH		
SYM	DESCRIPTION	DATE	CH. NO.	DRAFTS	CHECKER	ENG. APP.	MATERIAL	
UNLESS OTHERWISE SPECIFIED DIMENSIONS ARE IN INCHES AND INCLUDE CHEMICALLY APPLIED OR PLATED FINISHES		SCALE						SRG
DECIMALS .X ± .05 .XX ± .01 .XXX ± .005		FRACTIONS ± 1/64 ANGLES ± 0° 30'		TOLERANCES		CODE		TYPE & TEMPER
								HEAT TREAT. SPEC.
								DRAWN
								CHECKED
								FINAL APPROVAL
								PM-846 0
								ELEC. DES. APP.
								MECH. DES. APP.

THE CONTENTS OF THIS DRAWING ARE THE EXCLUSIVE PROPERTY OF THE TECHNICAL MATERIEL CORP. ITS UNAUTHORIZED USE OR REPRODUCTION IN WHOLE OR IN PART IS STRICTLY FORBIDDEN.

REQ. PER UNIT  
4

MODEL  
GPT-200K

USED ON

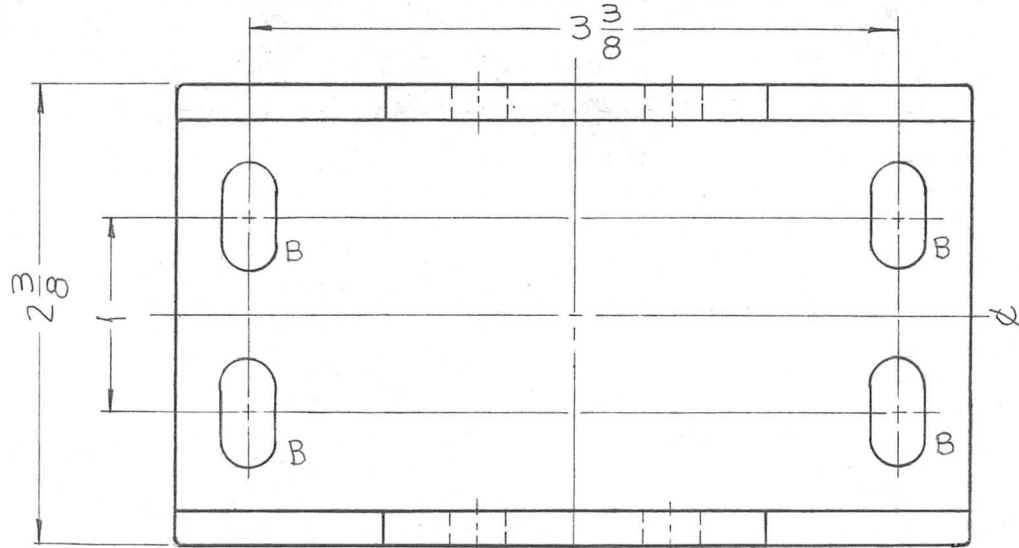
ASS'Y. NO.  
AS-123

DATE

12-7-62

PM-847

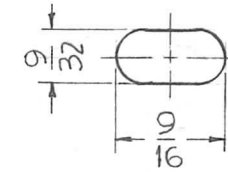
0



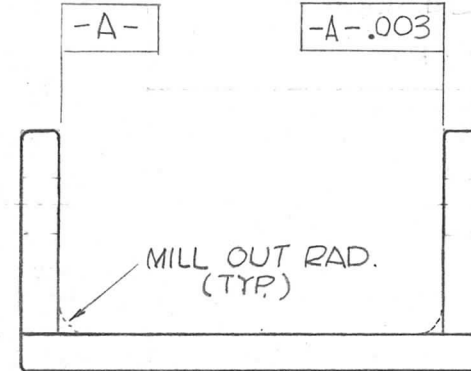
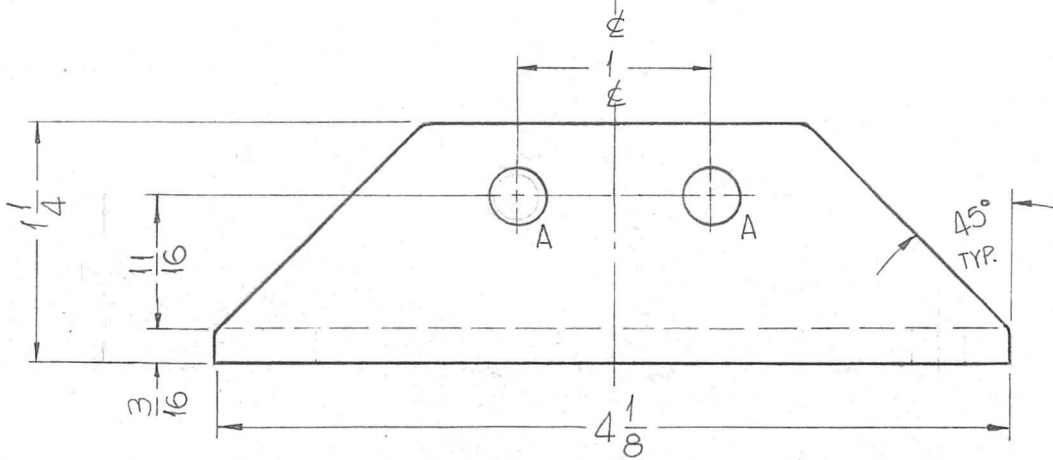
HOLES:

A - 9/32 DIA. (4 REQ.)

B - SEE DETAIL



B-DETAIL  
(4 REQ.)



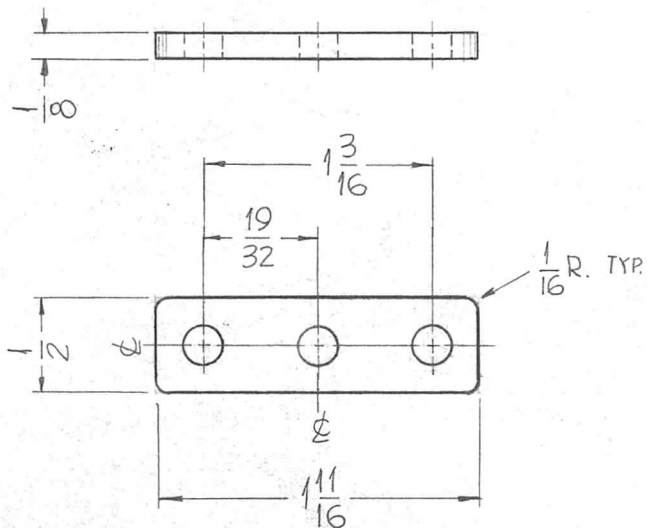
NOTE: ROUND EDGES & CORNERS 1/32 RADIUS

						REQ. ITEM	PART NO.	F. BUDETTI DESCRIPTION			SYMBOL	
							1-1/4 X 2-3/8 X 1-1/4 X .188	THE TECHNICAL MATERIEL CORP. MAMARONECK, NEW YORK				
							STOCK SIZE	SUPPORT, LEG				
							EXTRUDED ALUMINUM					
							MATERIAL					
SYM	DESCRIPTION	DATE	CH. NO.	DRAFTS	CHECKER	ENG. APP.	DIE NO. 2296	SRG	aa	Roe		
UNLESS OTHERWISE SPECIFIED: DIMENSIONS ARE IN INCHES		SCALE:					TYPE & TEMPER	HEATTREAT. SPEC.	DRAWN	CHECKED	FINAL APPROVAL	
TOLERANCES ON FRAC. ± 1/64 DEC. ± .005 ANGLES ± 1/2°		MAXIMUM ALLOWABLE TOLERANCES HAVE BEEN DETERMINED AND ANY DEVIATIONS WILL BE CAUSE FOR REJECTION. REMOVE ALL BURRS AND SHARP EDGES					S404 YELLOW IRIDITE				PM-847   0	
						FINISH & SPEC. NO.	ELEC. DES. APP.	MECH. DES. APP.				

THE CONTENTS OF THIS DRAWING ARE THE EXCLUSIVE PROPERTY OF THE TECHNICAL MATERIEL CORP. ITS UNAUTHORIZED USE FOR REPRODUCTION IN WHOLE OR IN PART IS STRICTLY FORBIDDEN.

REQ. PER UNIT	USED ON		
	MODEL	ASS'Y. NO.	DATE
8	GPT-200K AS-123	AX-447	12-12-62
4	GPT-200K AS-123	AX-448	12-12-62

PM-848 0



HOLES

15/64 DIA. (3REQ.)

FINISH NOTE:

ROUND ALL EDGES 1/32 R.  
POLISH BEFORE PLATING  
S245 - SILVER PLATE, BRIGHT  
S-423 - IRIDITE, 18-P SILVER KOTE

REQ.	ITEM	PART NO.	F. BUDETTI	DESCRIPTION	SYMBOL
		1/8 THICK		THE TECHNICAL MATERIEL CORP.	
		STOCK SIZE		MAMARONECK, NEW YORK	
0	ORIGINAL RELEASE	5.16.64	JWB	CONTACT HOLDER, BANDSWITCH	
X1	MTG HOLES WERE 3/16 DIA	10-21-63			
SYM	DESCRIPTION	DATE	CH. NO.	DRAFTS	CHECKER
UNLESS OTHERWISE SPECIFIED DIMENSIONS ARE IN INCHES AND INCLUDE CHEMICALLY APPLIED OR PLATED FINISHES		SCALE		MATERIAL	
DECIMALS .X ± .05 .XX ± .01 .XXX ± .005		FRACTIONS ± 1/64 ANGLES ± 0° 30'		CODE	
TOLERANCES		TYPE & TEMPER		HEAT TREAT. SPEC.	
		DRAWN		CHECKED	
		ELEC. DES. APP.		MECH. DES. APP.	
		FINISH & SPEC. NO.		PM-848 0	

THE CONTENTS OF THIS DRAWING ARE THE EXCLUSIVE PROPERTY OF THE TECHNICAL MATERIEL CORP. ITS UNAUTHORIZED USE FOR REPRODUCTION IN WHOLE OR IN PART IS STRICTLY FORBIDDEN.

REQ. PER UNIT

MODEL  
GPT-200K (AS-123)

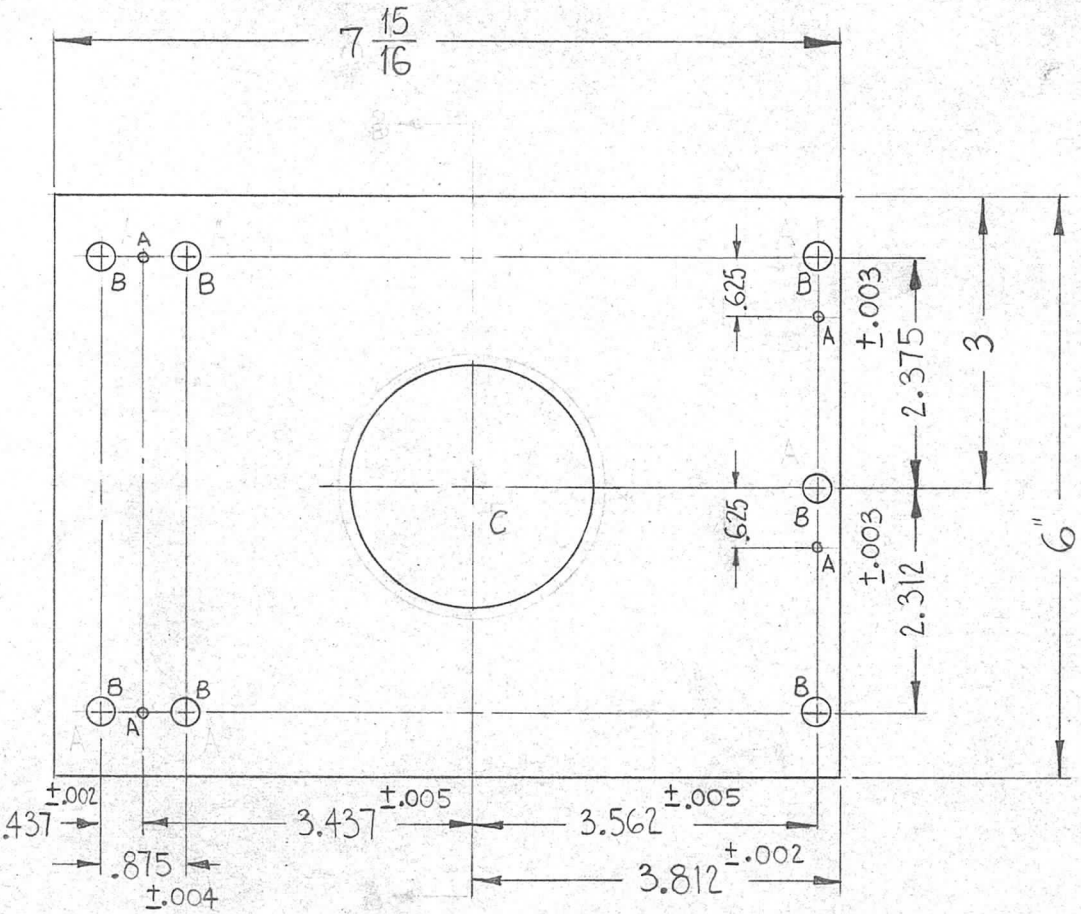
USED ON

ASS'Y. NO.  
A-2681

DATE  
5-24-63

PM-855

0



A ~ 1/8 DIA. (SEE NOTE) 4 REQ.  
 B ~ .281 DIA. 7 REQ.  
 C ~ 2.5000<sup>+0.0000</sup>/<sub>-.0005</sub> DIA. 1 REQ.

METAL STAMP TMC PART NO. 1/8 HIGH GOTHIC. (PM-855:0)

NOTE:  
SHOULD BE DRILLED & PINNED UPON ASS'Y.

1 BEARING TO BE WRINGING FIT (CLASS 5), INSERTED AFTER MACHINING & IRIDITING.

±.000  
-.002  
.375

1	1	BB-120-5	BEARING, RACE		
REQ.	ITEM	PART NO.	F. BUDETTI	DESCRIPTION	SYMBOL
		.375	THE TECHNICAL MATERIEL CORP. MAMARONECK, NEW YORK		
		ALUMINUM	PLATE, RETAINING BEARING		
0	ORIGINAL RELEASE FOR PRODUCTION	3-6-64			
SYM	DESCRIPTION	DATE	CH. NO.	DRAFTS	CHECKER
UNLESS OTHERWISE SPECIFIED DIMENSIONS ARE IN INCHES AND INCLUDE CHEMICALLY APPLIED OR PLATED FINISHES		SCALE	(DO NOT SCALE)		
DECIMALS .X ± .05 .XX ± .01 .XXX ± .005	FRACTIONS ± 1/64 ANGLES ± 0° 30'	CODE A	2024-T4		
TOLERANCES			TYPE & TEMPER	HEAT TREAT. SPEC.	DRAWN
			S404 YELLOW IRIDITE		W.A. FRANCO
			FINISH & SPEC. NO.	ELEC. DES. APP.	MECH. DES. APP.
					QA 8/6 RJC 4-7-64
					PM-855 0





THE CONTENTS OF THIS DRAWING ARE THE EXCLUSIVE PROPERTY OF THE TECHNICAL MATERIEL CORP. ITS UNAUTHORIZED USE FOR REPRODUCTION IN WHOLE OR IN PART IS STRICTLY FORBIDDEN.

REQ. PER UNIT

1

MODEL  
GPT-200K (AS-123)

USED ON

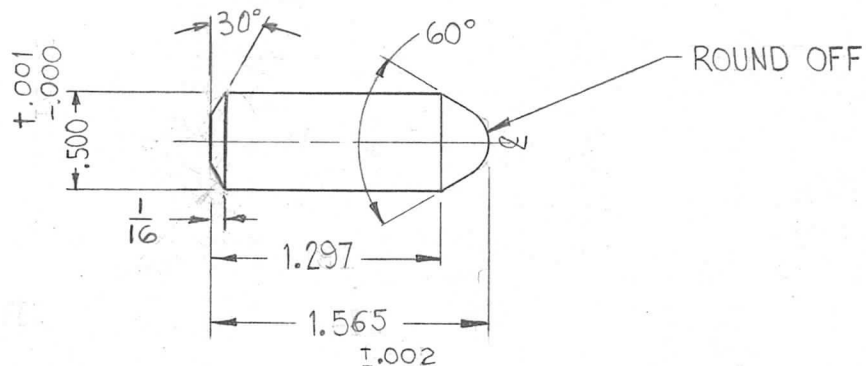
ASS'Y. NO.  
A-2681

DATE

5-23-63

PM-864

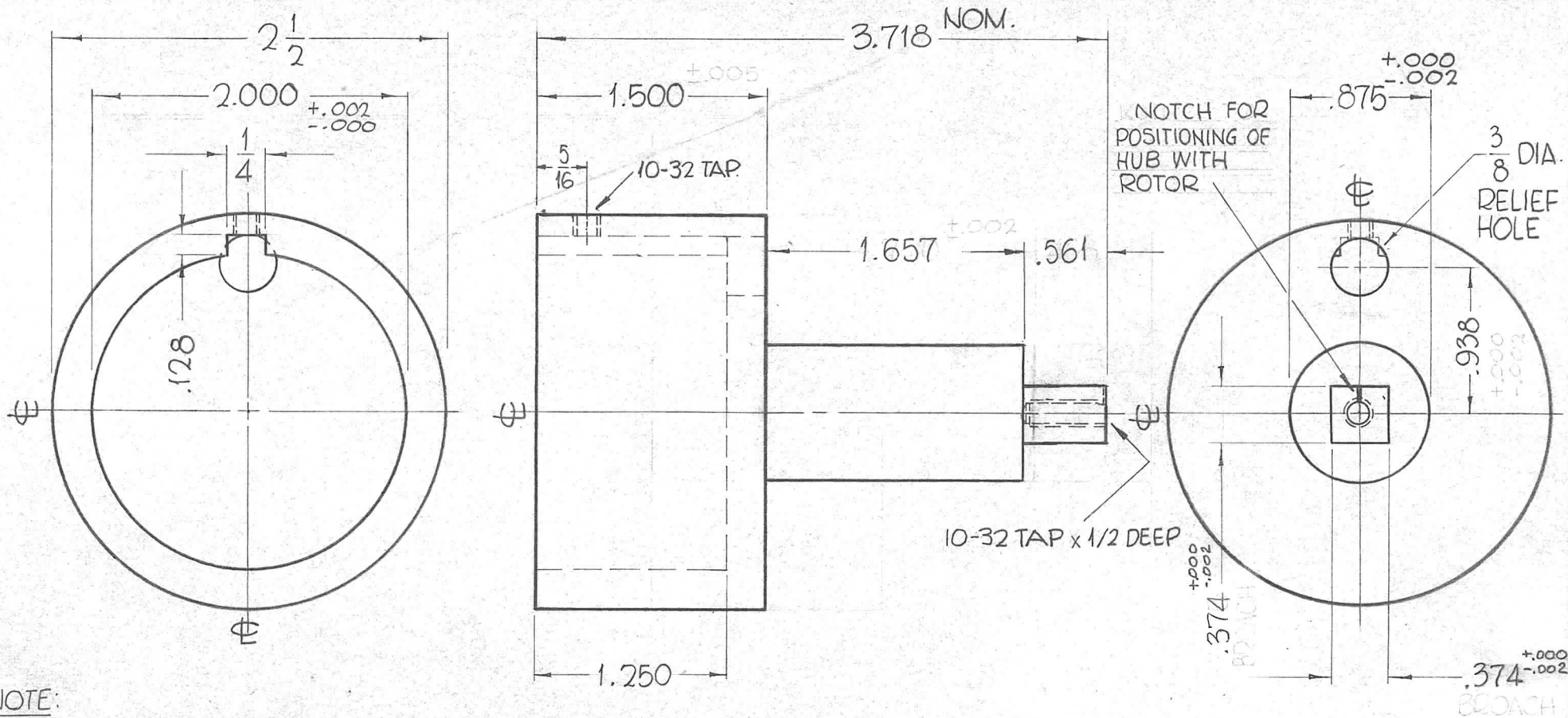
0



							REQ.	ITEM	PART NO.	F. BUDETTI	DESCRIPTION	SYMBOL
							1/2 DIA.			THE TECHNICAL MATERIEL CORP. MAMARONECK, NEW YORK		
							STOCK SIZE			SHAFT, DETENT		
							STAINLESS STEEL					
							MATERIAL					
							303			W.A. FRANCO		
							TYPE & TEMPER			DRAWN		
							HEAT TREAT. SPEC.			CHECKED		
							S104-PASSIVATE			FINAL APPROVAL		
							FINISH & SPEC. NO.			ELEC. DES. APP.		
										MECH. DES. APP.		
										PM-864		
										0		
UNLESS OTHERWISE SPECIFIED DIMENSIONS ARE IN INCHES AND INCLUDE CHEMICALLY APPLIED OR PLATED FINISHES							SCALE FULL (DO NOT SCALE)					
DECIMALS .X ± .05 .XX ± .01 .XXX ± .005							FRACTIONS ± 1/64 ANGLES ± 0° 30'					
TOLERANCES							CODE A					

THE CONTENTS OF THIS DRAWING ARE THE EXCLUSIVE PROPERTY OF THE TECHNICAL MATERIEL CORP. ITS UNAUTHORIZED USE FOR REPRODUCTION IN WHOLE OR IN PART IS STRICTLY FORBIDDEN.

REQ. PER UNIT	USED ON			PM-865	0
	MODEL	ASS'Y. NO.	DATE		
1	GPT-200K	AS-123	5-16-63		



NOTE:  
1/32 RADIUS ON ALL EDGES.

REQ.	ITEM	PART NO.	F. BUDETTI	DESCRIPTION	SYMBOL	
				THE TECHNICAL MATERIEL CORP. MAMARONECK, NEW YORK		
O	ORIGINAL RELEASE	5.16.64	ASB	HUB, TOP		
X1	2, 10-32 HOLES ADDED 1.657 WAS 1.750, .561 WAS .468	12-27-63	SRG	1ST TT		
SYM	DESCRIPTION	DATE	CH. NO.	DRAFTS	CHECKER	ENG. APP.
UNLESS OTHERWISE SPECIFIED DIMENSIONS ARE IN INCHES AND INCLUDE CHEMICALLY APPLIED OR PLATED FINISHES			SCALE			
DECIMALS .X ± .05 .XX ± .01 .XXX ± .005			FRACTIONS ± 1/64 ANGLES ± 0° 30'			
TOLERANCES			CODE			
303		HEAT TREAT. SPEC.	DRAWN	CHECKED	FINAL APPROVAL	
TYPE & TEMPER			John C. Biele	aa	RAC	
FINISH & SPEC. NO.			ELEC. DES. APP.		MECH. DES. APP.	
			PM-865		0	

THE CONTENTS OF THIS DRAWING ARE THE EXCLUSIVE PROPERTY OF THE TECHNICAL MATERIEL CORP. ITS UNAUTHORIZED USE FOR REPRODUCTION IN WHOLE OR IN PART IS STRICTLY FORBIDDEN.

REQ. PER UNIT

1

USED ON

MODEL

GPT-200K (AS-123)

ASS'Y. NO.

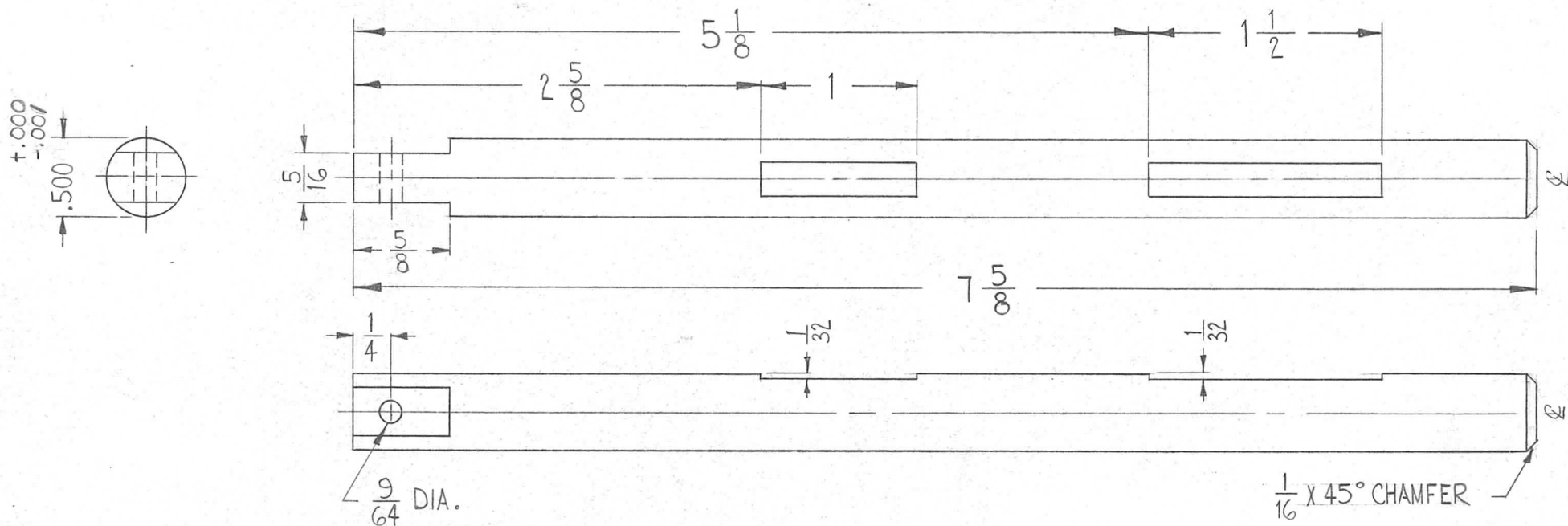
A-2681

DATE

5-24-63

PM-866

0



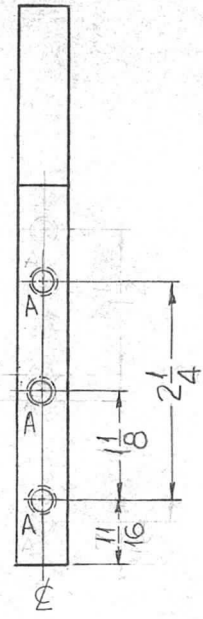
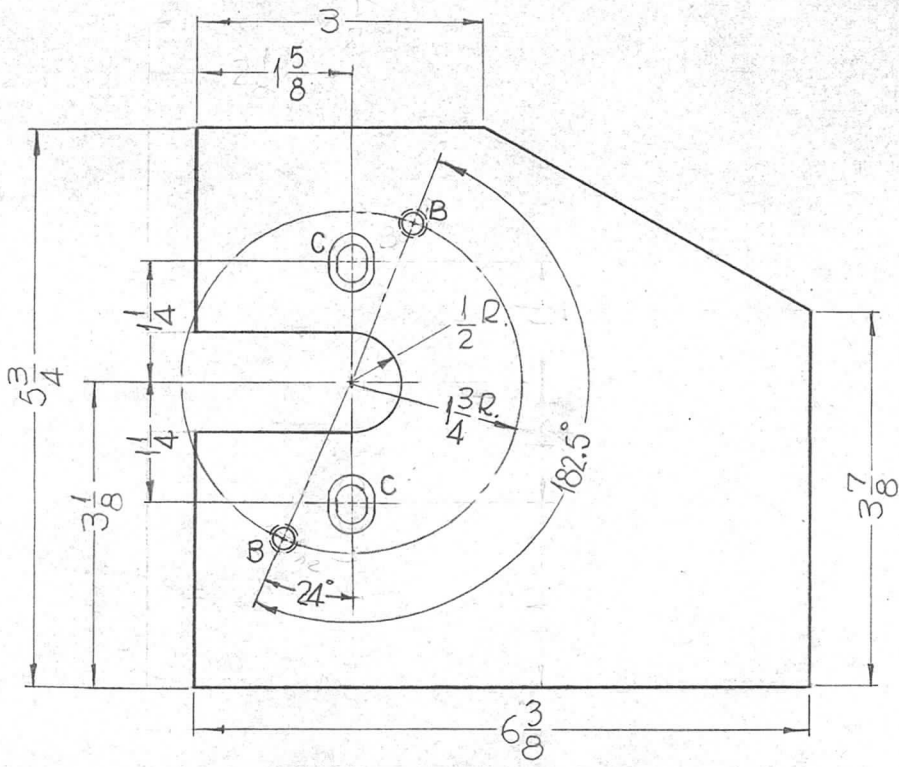
							REQ. ITEM	PART NO.	F. BUDETTI	DESCRIPTION	SYMBOL	
							AS NOTED		THE TECHNICAL MATERIEL CORP. MAMARONECK, NEW YORK			
							STOCK SIZE		SHAFT, SOLENOID			
							STAINLESS STEEL					
							MATERIAL					
							303		W.A. FRANCO <i>aa gms</i> <i>RDC</i> 4-7-64			
							TYPE & TEMPER		DRAWN		CHECKED	FINAL APPROVAL
							S104-PASSIVATE		<i>aa gms</i>		<i>RDC</i>	PM-866 0
							FINISH & SPEC. NO.		ELEC. DES. APP.		MECH. DES. APP.	
UNLESS OTHERWISE SPECIFIED DIMENSIONS ARE IN INCHES AND INCLUDE CHEMICALLY APPLIED OR PLATED FINISHES							SCALE FULL (DO NOT SCALE)					
DECIMALS .X ± .05 .XX ± .01 .XXX ± .005		FRACTIONS ± 1/64 ANGLES ± 0° 30'		TOLERANCES		CODE A						



THE CONTENTS OF THIS DRAWING ARE THE EXCLUSIVE PROPERTY OF THE TECHNICAL MATERIEL CORP. ITS UNAUTHORIZED USE FOR REPRODUCTION IN WHOLE OR IN PART IS STRICTLY FORBIDDEN.

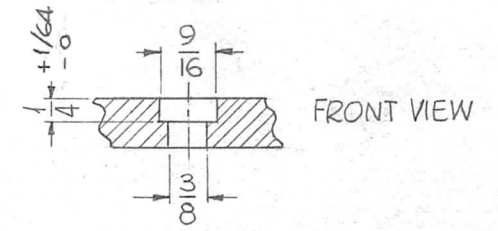
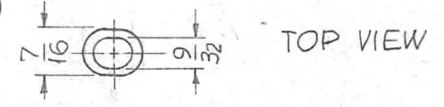
REQ. PER UNIT	USED ON	
	MODEL	ASS'Y. NO.
1	GPT-200K (AX-395)	A-3234
		DATE
		4-17-63

PM-870 0

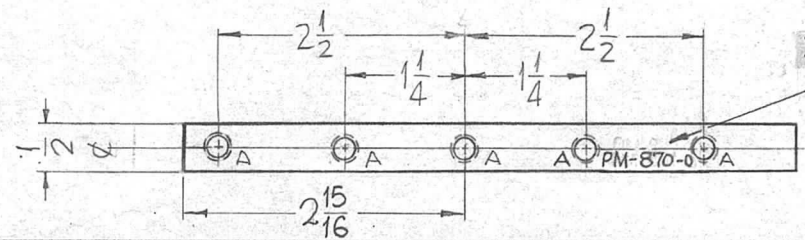


HOLE:

A ~ DRILL & TAP FOR 1/4-20 X 9/16 DEEP. (8 REQ.)  
 B ~ DRILL & TAP FOR 1/4-20 X 3/8 DEEP. (2 REQ.)



C-DETAIL (2REQ.)



METAL STAMP TMC PART NO. 1/8 HIGH GOTHIC.

							REQ. ITEM	PART NO.	F. BUDETTI	DESCRIPTION	SYMBOL	
								1/2 THICK		THE TECHNICAL MATERIEL CORP. MAMARONECK, NEW YORK.		
								STOCK SIZE				
								ALUMINUM		PLATE, SIDE, LEFT (4)		
								MATERIAL				
								2024-T4	SRG	aa 906	3-30-64	
								TYPE & TEMPER	HEAT TREAT. SPEC.	DRAWN	CHECKED	FINAL APPROVAL
								S-245 SILVER PLATE, BRIGHT		DB RB	BB	PM-870 0
								FINISH & SPEC. NO.	ELEC. DES. APP.	MECH. DES. APP.		

THE CONTENTS OF THIS DRAWING ARE THE EXCLUSIVE PROPERTY OF THE TECHNICAL MATERIEL CORP. ITS UNAUTHORIZED USE FOR REPRODUCTION IN WHOLE OR IN PART IS STRICTLY FORBIDDEN.

REQ. PER UNIT

1

MODEL  
GPT-200K (AX-395)

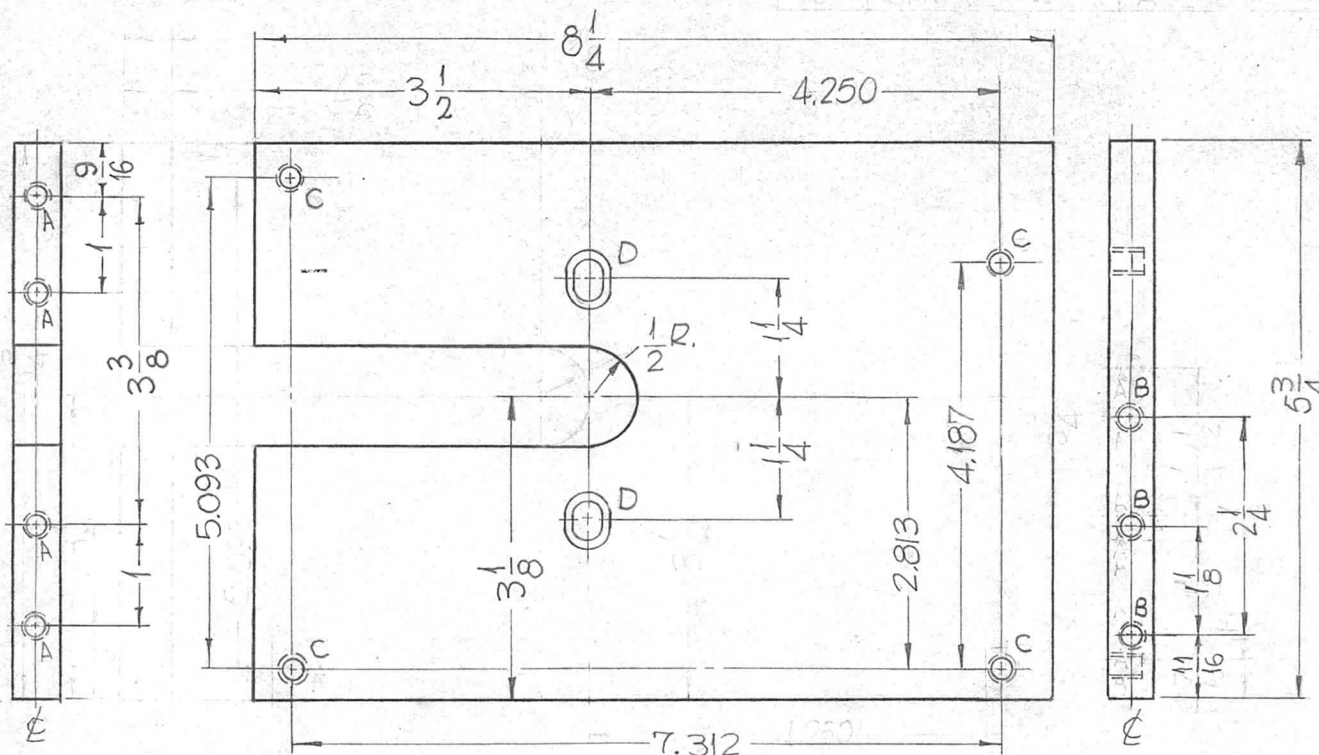
USED ON

ASS'Y. NO.  
A-3237

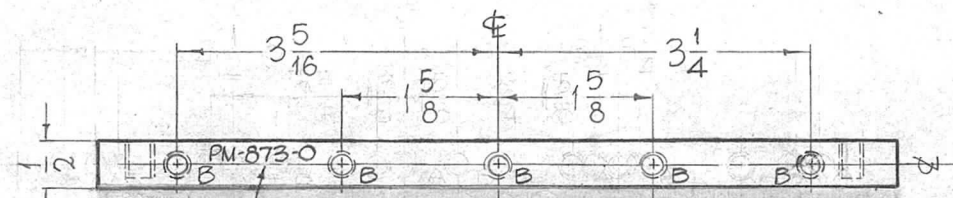
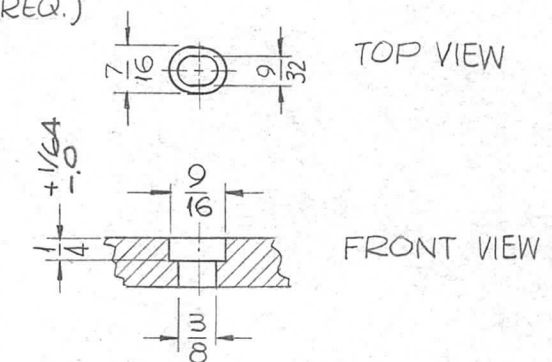
DATE

4-17-63

PM-873 0



**HOLES:**  
 A~DRILL & TAP FOR 10-32 X 9/16 DEEP (4REQ.)  
 B~DRILL & TAP FOR 1/4-20 X 9/16 DEEP (8REQ.)  
 C~DRILL & TAP FOR 1/4-20 X 3/8 DEEP (4REQ.)



METAL STAMP TMC PART NO. 1/8 HIGH GOTHIC.

REQ.	ITEM	PART NO.	F. BUDETTI DESCRIPTION			SYMBOL
		1/2 THICK	THE TECHNICAL MATERIEL CORP.			
		STOCK SIZE	MAMARONECK, NEW YORK			
		ALUMINUM	PLATE, SIDE, LEFT (3)			
		MATERIAL				
		2024-T4	SRG	aaqrb	RJC	3/30/64
		TYPE & TEMPER	DRAWN	CHECKED	FINAL APPROVAL	
		HEAT TREAT. SPEC.	203 AB	BC	PM-873 0	
		FINISH & SPEC. NO.	ELEC. DES. APP.	MECH. DES. APP.		



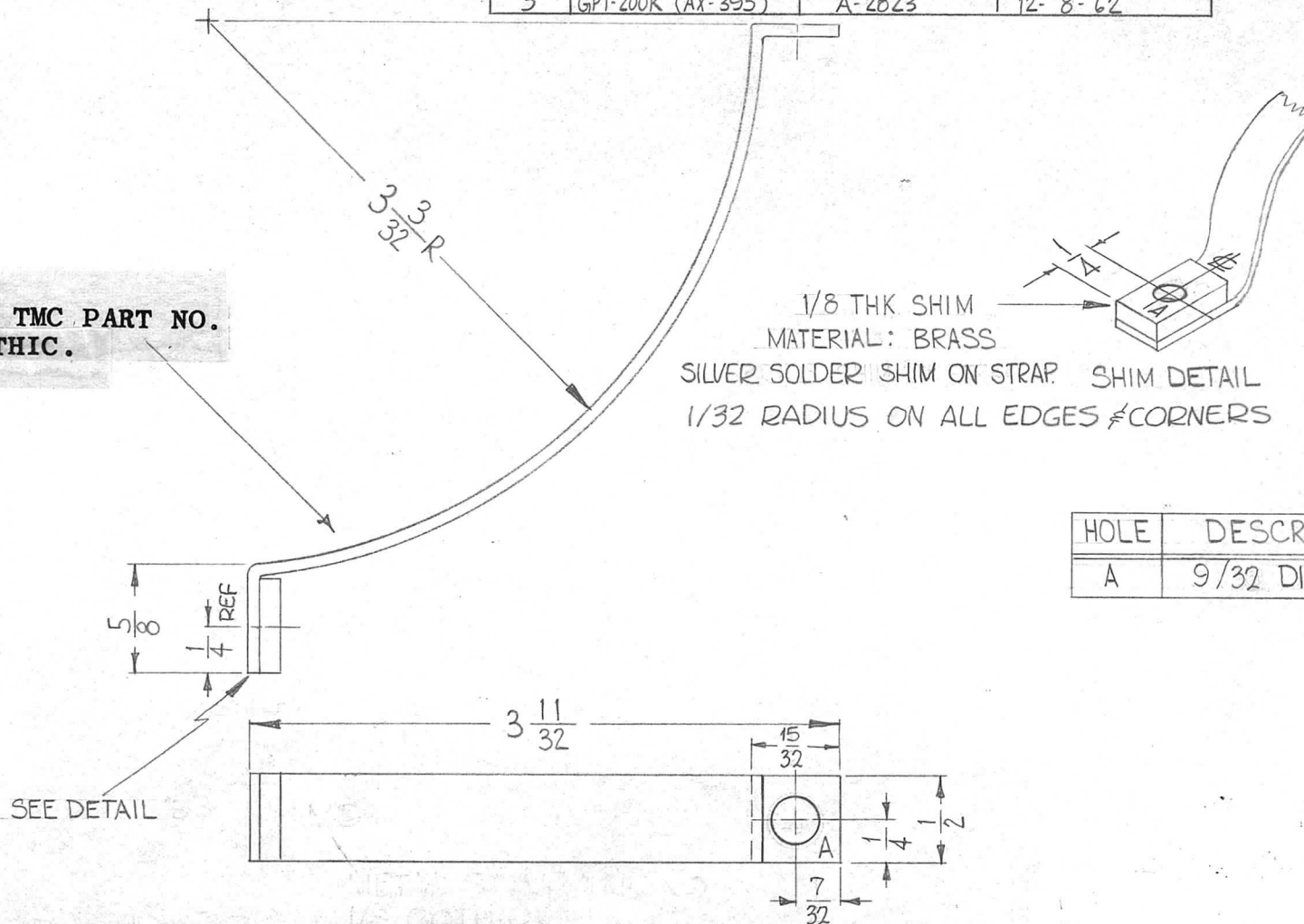


THE CONTENTS OF THIS DRAWING ARE THE EXCLUSIVE PROPERTY OF THE TECHNICAL MATERIEL CORP. ITS UNAUTHORIZED USE FOR REPRODUCTION IN WHOLE OR IN PART IS STRICTLY FORBIDDEN.

REQ. PER UNIT	USED ON		
	MODEL	ASS'Y. NO.	DATE
4	GPT-200K (AX-395)	A-2821	12-8-62
3	GPT-200K (AX-395)	A-2822	12-8-62
3	GPT-200K (AX-395)	A-2823	12-8-62

PM-875 0

METAL STAMP TMC PART NO. 1/8 HIGH GOTHIC.



HOLE	DESCRIPTION	REQ.
A	9/32 DIA.	2

SEE DETAIL

REQ.	ITEM	PART NO.	F. BUDETTI	DESCRIPTION	SYMBOL
		1/16 THK.		THE TECHNICAL MATERIEL CORP.	
		STOCK SIZE		MAMARONECK, NEW YORK	
		COPPER		STRAP, CAPACITOR RETAINER	
		MATERIAL			
		SOFT	W.A. FRANCO	aaas RAC 3/23/64	
		TYPE & TEMPER		DRAWN	CHECKED
		HEAT TREAT. SPEC.			FINAL APPROVAL
		S-245 SILVER PLATE, BRIGHT	W.A. FRANCO	aaas RAC	PM-875 0
		FINISH & SPEC. NO.	ELEC. DES. APP.	MECH. DES. APP.	

ORIGINAL RELEASE FOR PRODUCTION

3/23/64

SYM DESCRIPTION DATE CH. NO. DRAFTS CHECKER ENG. APP.

UNLESS OTHERWISE SPECIFIED DIMENSIONS ARE IN INCHES AND INCLUDE CHEMICALLY APPLIED OR PLATED FINISHES

SCALE H

DECIMALS .X ± .05 .XX ± .01 .XXX ± .005  
 FRACTIONS ± 1/64 ANGLES ± 0° 30'  
 TOLERANCES

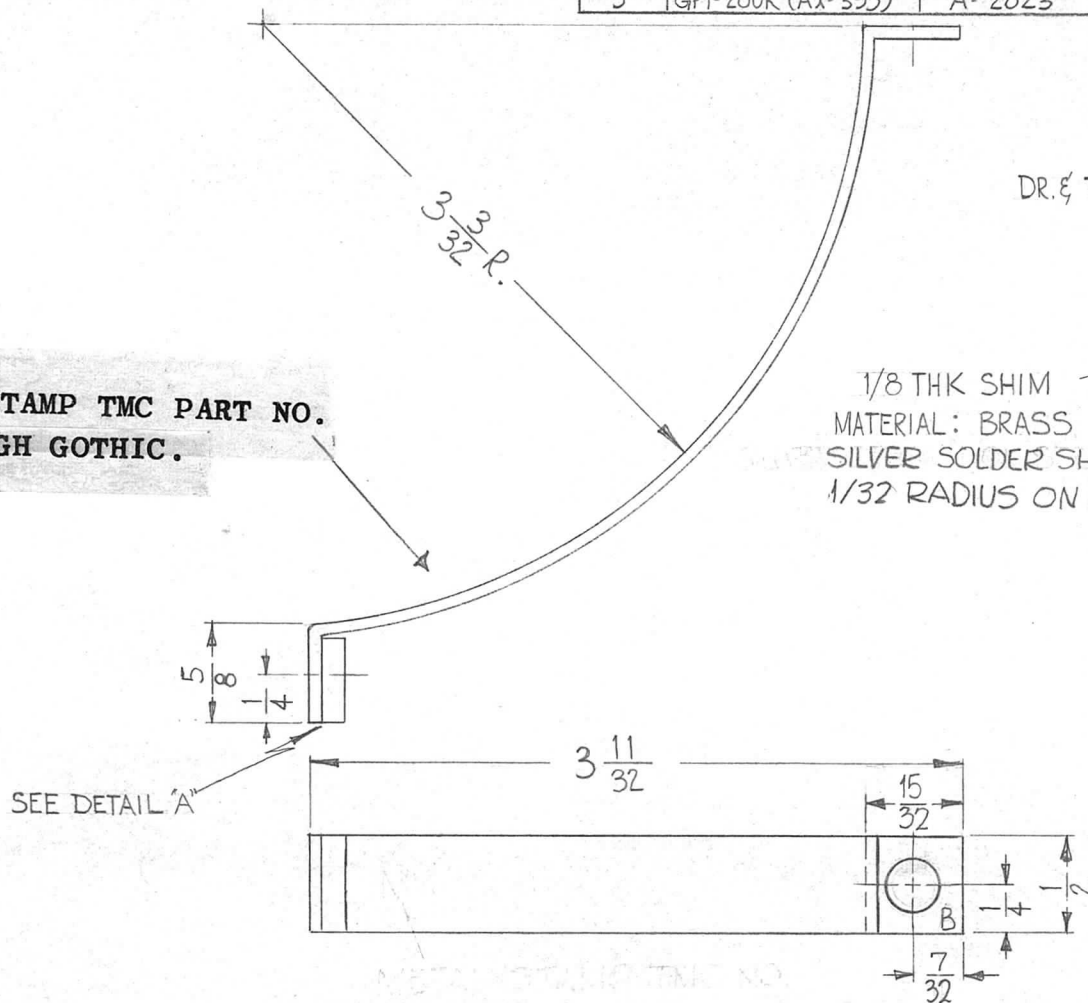
CODE A

THE CONTENTS OF THIS DRAWING ARE THE EXCLUSIVE PROPERTY OF THE TECHNICAL MATERIEL CORP. ITS UNAUTHORIZED USE FOR REPRODUCTION IN WHOLE OR IN PART IS STRICTLY FORBIDDEN.

REQ. PER UNIT	USED ON		
	MODEL	ASS'Y. NO.	DATE
4	GPT-200K (AX-395)	A-2821	12-8-62
3	GPT-200K (AX-395)	A-2822	12-8-62
3	GPT-200K (AX-395)	A-2823	12-8-62

PM-876 0

METAL STAMP TMC PART NO.  
1/8 HIGH GOTHIC.



HOLE	DESCRIPTION	REQ.
B	9/32 DIA.	1

REQ.	ITEM	PART NO.	F. BUDETTI	DESCRIPTION	SYMBOL
		1/16 THK. STOCK SIZE		THE TECHNICAL MATERIEL CORP. MAMARONECK, NEW YORK	
		COPPER		STRAP, CAPACITOR RETAINER	
		MATERIAL			
		SOFT	W.A. FRANCO	aa	RFC 3/22/64
		TYPE & TEMPER		DRAWN	CHECKED
		HEAT TREAT. SPEC.			FINAL APPROVAL
		5-245 SILVER PLATE, BRIGHT	RB RB	RB	PM-876 10
		FINISH & SPEC. NO.		ELEC. DES. APP.	MECH. DES. APP.

UNLESS OTHERWISE SPECIFIED DIMENSIONS ARE IN INCHES AND INCLUDE CHEMICALLY APPLIED OR PLATED FINISHES

SCALE:  $\frac{1}{16}$

DECIMALS  
.X  $\pm$  .05  
.XX  $\pm$  .01  
.XXX  $\pm$  .005

FRACTIONS  
 $\pm$  1/64  
ANGLES  
 $\pm$  0° 30'

TOLERANCES

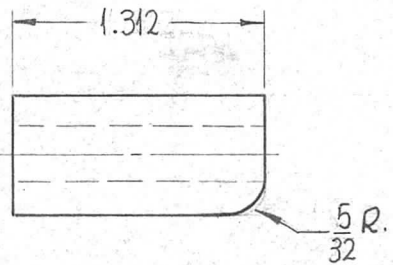
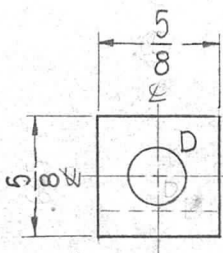
CODE  
A

THE CONTENTS OF THIS DRAWING ARE THE EXCLUSIVE PROPERTY OF THE TECHNICAL MATERIEL CORP. ITS UNAUTHORIZED USE FOR REPRODUCTION IN WHOLE OR IN PART IS STRICTLY FORBIDDEN.

REQ. PER UNIT	USED ON		
	MODEL	ASS'Y. NO.	DATE
2	GPT-200K (AX-395)	A-3236	6-6-63

PM-878 0

HOLE:  
5/16 DIA (1REQ.)



TMC NO.	A	B	C	HOLE
EW-500-1-53	5/16	1.312	5/8	

REQ.	ITEM	PART NO.	F. BUDETTI	DESCRIPTION	SYMBOL	
		5/8 SQ		THE TECHNICAL MATERIEL CORP. MAMARONECK, NEW YORK		
		STOCK SIZE		STANDOFF		
		ALUMINUM				
		MATERIAL				
		2024-T4	SRG	aa <sup>905</sup>	RJC 3-30-64	
		TYPE & TEMPER	HEAT TREAT. SPEC.	DRAWN	CHECKED	FINAL APPROVAL
		S404-IRIDITE, 14-2 AL COAT		BB RB	BB	PM-878 0
		FINISH & SPEC. NO.	ELEC. DES. APP.	MECH. DES. APP.		

UNLESS OTHERWISE SPECIFIED DIMENSIONS ARE IN INCHES AND INCLUDE CHEMICALLY APPLIED OR PLATED FINISHES

DECIMALS  
.X ± .05  
.XX ± .01  
.XXX ± .005

FRACTIONS  
± 1/64  
ANGLES  
± 0° 30'

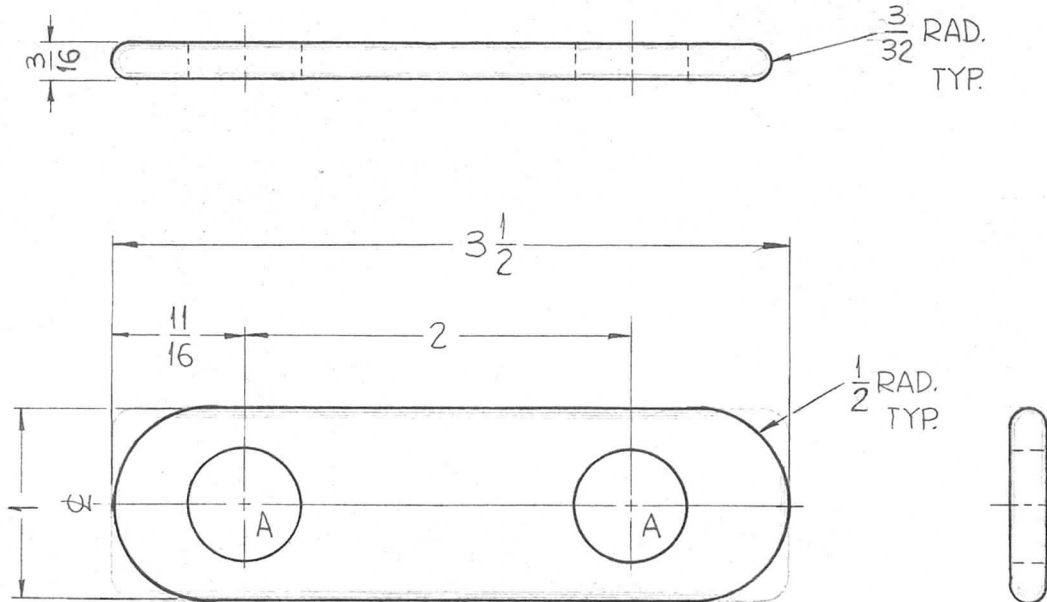
TOLERANCES

CODE  
A

THE CONTENTS OF THIS DRAWING ARE THE EXCLUSIVE PROPERTY OF THE TECHNICAL MATERIEL CORP. ITS UNAUTHORIZED USE OR REPRODUCTION IN WHOLE OR IN PART IS STRICTLY FORBIDDEN.

REQ. PER UNIT	USED ON		
	MODEL	ASS'Y. NO.	DATE
6	GPT-200K	AP-109	11-2-62
6	GPT-200K	AP-111	11-2-62

PM-886 0



HOLE	DESCRIPTION	REQ.
A	9/16 DIA.	2

REQ.	ITEM	PART NO.	F. BUDETTI DESCRIPTION			SYMBOL
		3/16 THICK	THE TECHNICAL MATERIEL CORP.			
		STOCK SIZE	MAMARONECK, NEW YORK			
0	ORIGINAL RELEASE	5.16.64	PLATE, CONNECTOR TERMINAL			
		COPPER				
		MATERIAL				
SYM	DESCRIPTION	DATE	CH. NO.	DRAFTS	CHECKER	ENG. APP.
	UNLESS OTHERWISE SPECIFIED:					
	DIMENSIONS ARE IN INCHES	SCALE:				
	TOLERANCES ON	MAXIMUM ALLOWABLE TOLERANCES HAVE BEEN DETERMINED AND ANY DEVIATIONS WILL BE CAUSE FOR REJECTION.				
	FRAC. ± 1/64 DEC. ± .005 ANGLES ± 1/2°	REMOVE ALL BURRS AND SHARP EDGES				
		TYPE & TEMPER	HEATTREAT. SPEC.	DRAWN	CHECKED	FINAL APPROVAL
		NO FINISH		SRG	aa	RR
		FINISH & SPEC. NO.		ELEC. DES. APP.	MECH. DES. APP.	PM-886 0

THE CONTENTS OF THIS DRAWING ARE THE EXCLUSIVE PROPERTY OF THE TECHNICAL MATERIEL CORP. ITS UNAUTHORIZED USE FOR REPRODUCTION IN WHOLE OR IN PART IS STRICTLY FORBIDDEN.

REQ. PER UNIT

USED ON

MODEL

ASS'Y. NO.

DATE

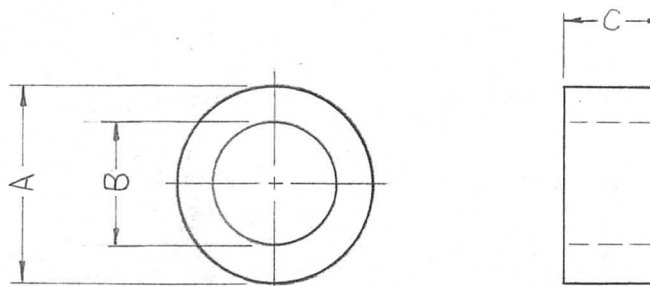
GPT-200K

A-2706

3-18-63

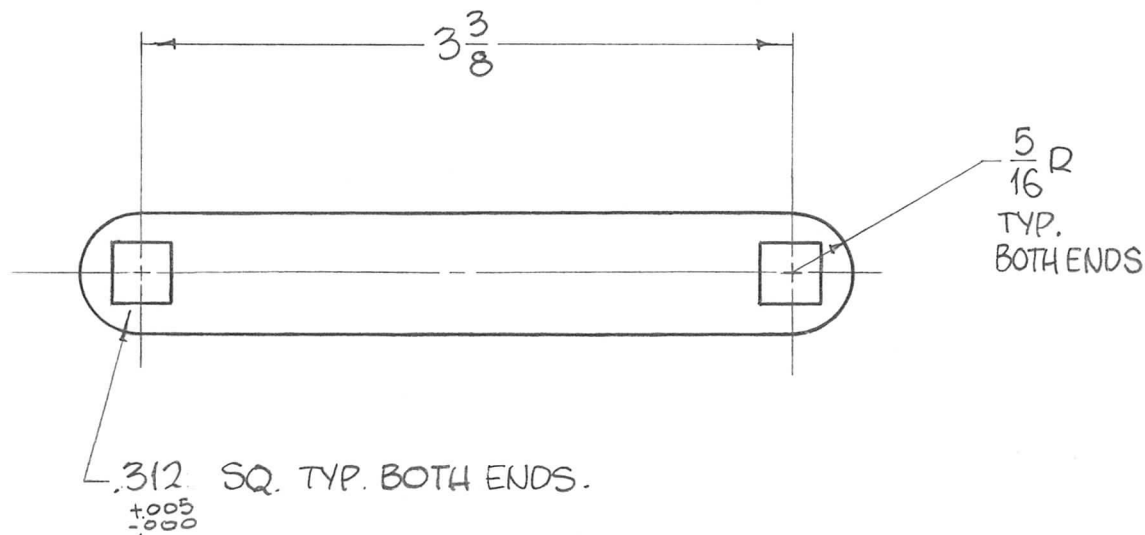
PM 892 0

TMC PART NO.	A	B	C
PM-892-1	1	.630 ±.003	.500 ±.003
PM-892-2	1	.630 ±.003	.156 ±.003
PM-892-3	.625	17/32	2.671



REQ.	ITEM	PART NO.	F. BÜDETTI DESCRIPTION				SYMBOL		
0	ORIG. RELEASE FOR PROD	5-27-64	SRG	THE TECHNICAL MATERIEL CORP. MAMARONECK, NEW YORK					
X2	PM-892-3 ADDED	3-20-64		STOCK SIZE					
X1	ON PM-892-1 "C" DIM WAS 5/8 " " " -2 " " " 3/32	1-15-64		HOT ROLLED STEEL				SPACER	
SYM	DESCRIPTION	DATE	CH. NO.	DRAFTS	CHECKER	ENG. APP.	MATERIAL		
UNLESS OTHERWISE SPECIFIED DIMENSIONS ARE IN INCHES AND INCLUDE CHEMICALLY APPLIED OR PLATED FINISHES			SCALE				1020	SRG	
			#				TYPE & TEMPER	HEAT TREAT. SPEC.	
							DRAWN	CHECKED	
							FINAL APPROVAL		
DECIMALS .X ± .05 .XX ± .01 .XXX ± .005	TOLERANCES	FRACTIONS ± 1/64 ANGLES ± 0° 30'	CODE A					CHROME PLATE	
							FINISH & SPEC. NO.	ELEC. DES. APP.	
								MECH. DES. APP.	
								PM 892 0	

REQ. PER UNIT	USED ON			PM 893 0
	MODEL	ASS'Y. NO.	DATE	
1	GPT-200K	A-2706	1-15-64	

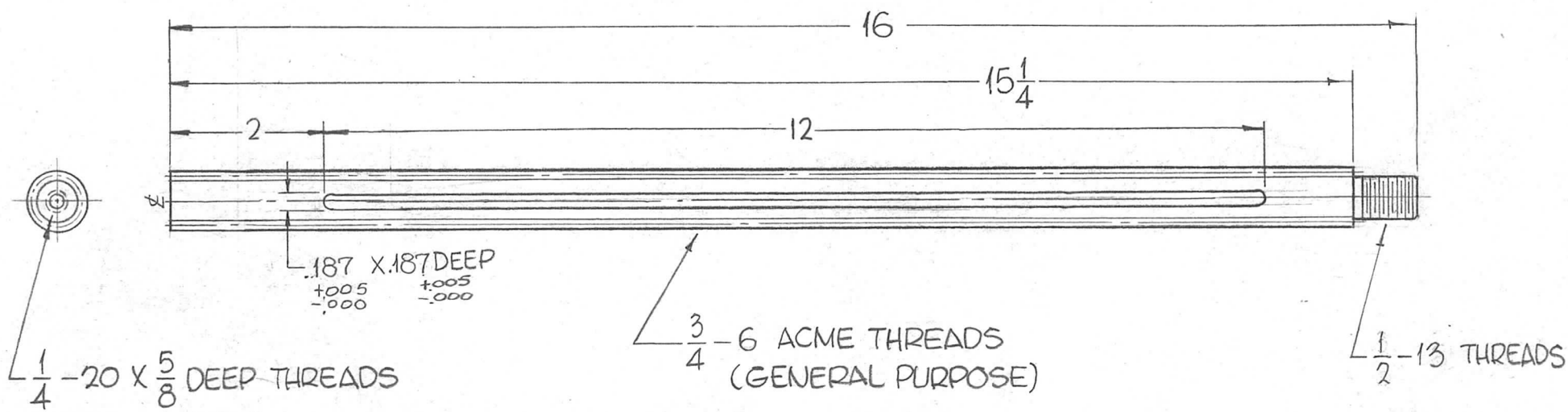


REQ.	ITEM	PART NO.	F. BUDETTI DESCRIPTION				SYMBOL				
			3/16 THICK				THE TECHNICAL MATERIEL CORP. MAMARONECK, NEW YORK				
			STOCK SIZE								
0	ORIG. RELEASE FOR PROD.	5-27-64		SRG			ARM, HAND CRANK				
X1	REVISED & REDRAWN	1-16-64									
SYM	DESCRIPTION	DATE	CH. NO.	DRAFTS	CHECKER	ENG. APP.	MATERIAL				
UNLESS OTHERWISE SPECIFIED DIMENSIONS ARE IN INCHES AND INCLUDE CHEMICALLY APPLIED OR PLATED FINISHES		SCALE	1" = 1"				1020	John C Biele <i>JCB</i> <i>KAC</i>			
DECIMALS .X ± .05 .XX ± .01 .XXX ± .005		TOLERANCES		FRACTIONS ± 1/64 ANGLES ± 0° 30'		CODE A	TYPE & TEMPER CHROME PLATE	HEAT TREAT. SPEC.	DRAWN <i>JCB</i>	CHECKED <i>KAC</i>	FINAL APPROVAL PM 893 0
							FINISH & SPEC. NO.	ELEC. DES. APP.	MECH. DES. APP.		



THE CONTENTS OF THIS DRAWING ARE THE EXCLUSIVE PROPERTY OF THE TECHNICAL MATERIEL CORP. ITS UNAUTHORIZED USE FOR REPRODUCTION IN WHOLE OR IN PART IS STRICTLY FORBIDDEN.

REQ. PER UNIT	USED ON			PM-895	0
	MODEL	ASS'Y. NO.	DATE		
1	GPT-200K	A-2706	3-19-63		



REQ.	ITEM	PART NO.	F. BUDETTI DESCRIPTION			SYMBOL				
0	ORIG. RELEASE FOR PROD.	5-27-64	SRG	AS NOTED			THE TECHNICAL MATERIEL CORP. MAMARONECK, NEW YORK ROD, THREADED			
X2	SLOT ADDED			STOCK SIZE						
X1	16" 1/2-13 X 3/4 LONG, 3/4-6 THREADS 1/4-20 X 5/8 DP ADDED.	1-15-64		STAINLESS STEEL						
SYM	DESCRIPTION	DATE	CH. NO.	DRAFTS	CHECKER	ENG. APP.	MATERIAL			
UNLESS OTHERWISE SPECIFIED DIMENSIONS ARE IN INCHES AND INCLUDE CHEMICALLY APPLIED OR PLATED FINISHES			SCALE			1/2" = 1"	303	SRG	BB	RSL
DECIMALS .X ± .05 .XX ± .01 .XXX ± .005			FRACTIONS ± 1/64 ANGLES ± 0° 30'			CODE A	CLEAR PASSIVATE	DRAWN	CHECKED	FINAL APPROVAL
							FINISH & SPEC. NO.	ELEC. DES. APP.	MECH. DES. APP.	PM-895 0





THE CONTENTS OF THIS DRAWING ARE THE EXCLUSIVE PROPERTY OF THE TECHNICAL MATERIEL CORP. ITS UNAUTHORIZED USE FOR REPRODUCTION IN WHOLE OR IN PART IS STRICTLY FORBIDDEN.

REQ. PER UNIT

USED ON

MODEL

ASS'Y. NO.

DATE

1

GPT-200K

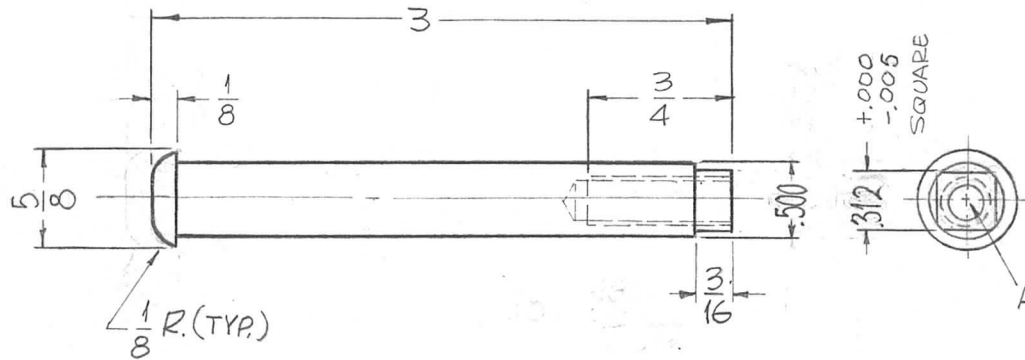
A-2706

3-19-63

PM 897 0

HOLE:

A ~ 1/4-20 TAP (1REQ.)



							REQ.	ITEM	PART NO.	F. BUDETTI	DESCRIPTION	SYMBOL
							1/2" THICK		THE TECHNICAL MATERIEL CORP. MAMARONECK, NEW YORK			
							STOCK SIZE		SHAFT, HANDLE SUPPORT			
0	ORIG. RELEASE FOR PROD.	5-27-64		SRG			HOT ROLLED STEEL					
XI	5/8 DIM WAS 1/2, .500 WAS 3/8 312 <sup>+0.00</sup> WAS 5/16 <sup>+0.00</sup>	1-15-64					MATERIAL					
SYM	DESCRIPTION	DATE	CH. NO.	DRAFTS	CHECKER	ENG. APP.						
UNLESS OTHERWISE SPECIFIED DIMENSIONS ARE IN INCHES AND INCLUDE CHEMICALLY APPLIED OR PLATED FINISHES						SCALE	1"=1"		1020	SRG	BC	PM 897 0
DECIMALS .X ± .05 .XX ± .01 .XXX ± .005						TOLERANCES		FRACTIONS ± 1/64 ANGLES ± 0° 30'		CODE		
							TYPE & TEMPER	HEAT TREAT. SPEC.	DRAWN	CHECKED	FINAL APPROVAL	
							CHROME PLATE		SRG	BC	PM 897 0	
							FINISH & SPEC. NO.		ELEC. DES. APP.	MECH. DES. APP.		

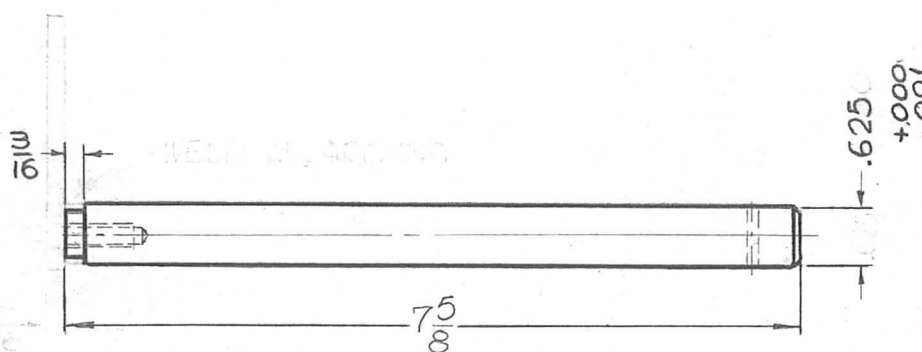
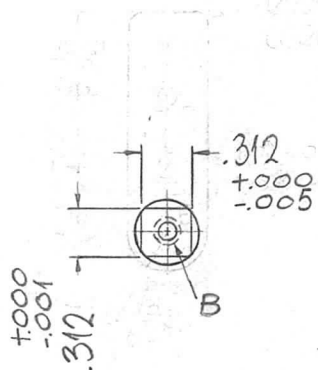
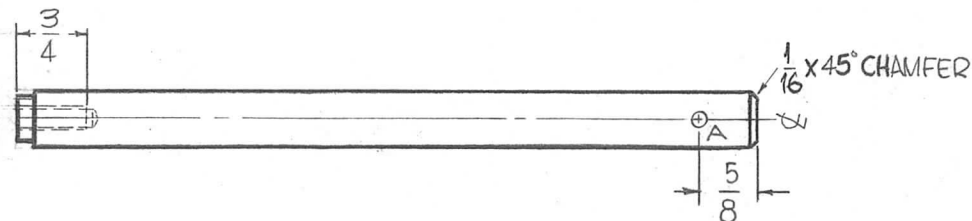
THE CONTENTS OF THIS DRAWING ARE THE EXCLUSIVE PROPERTY OF THE TECHNICAL MATERIEL CORP. ITS UNAUTHORIZED USE FOR REPRODUCTION IN WHOLE OR IN PART IS STRICTLY FORBIDDEN.

REQ. PER UNIT	USED ON		
	MODEL	ASS'Y. NO.	DATE
1	GPT-200K	A-2706	3-18-63

PM-899 0

HOLE:

\* A ~ .125  $\begin{smallmatrix} +.004 \\ -.000 \end{smallmatrix}$  (1REQ.)  
 B ~ 1/4-20 TAP (1REQ.)



\* PIN UPON ASSEMBLY.

REQ.	ITEM	PART NO.	F. BUDETTI	DESCRIPTION	SYMBOL						
0	ORIG RELEASE FOR PROD.	5-27-64	SRG	AS NOTED	THE TECHNICAL MATERIEL CORP. MAMARONECK, NEW YORK						
X2	5/8 WAS 1/2			STOCK SIZE							
X1	.3125 $\begin{smallmatrix} +.000 \\ -.001 \end{smallmatrix}$ SQ WAS 1/2 SQ $\begin{smallmatrix} +.000 \\ -.0003 \end{smallmatrix}$ 1/16 X 45° CHAMFER WAS 1/16 X 45° BRANCH	1-15-64		STAINLESS STEEL	SHAFT, GEAR MTG.						
SYM	DESCRIPTION	DATE	CH. NO.	DRAFTS	CHECKER	ENG. APP.	MATERIAL				
UNLESS OTHERWISE SPECIFIED DIMENSIONS ARE IN INCHES AND INCLUDE CHEMICALLY APPLIED OR PLATED FINISHES			SCALE			1/2" = 1"	303	SRG	SRG	RAC	
DECIMALS .X ± .05 .XX ± .01 .XXX ± .005			FRACTIONS ± 1/64 ANGLES ± 0° 30'			TOLERANCES	TYPE & TEMPER	HEAT TREAT. SPEC.	DRAWN	CHECKED	FINAL APPROVAL
			CODE			CLEAR PASSIVATE				PM-899 0	
						FINISH & SPEC. NO.	ELEC. DES. APP.	MECH. DES. APP.			