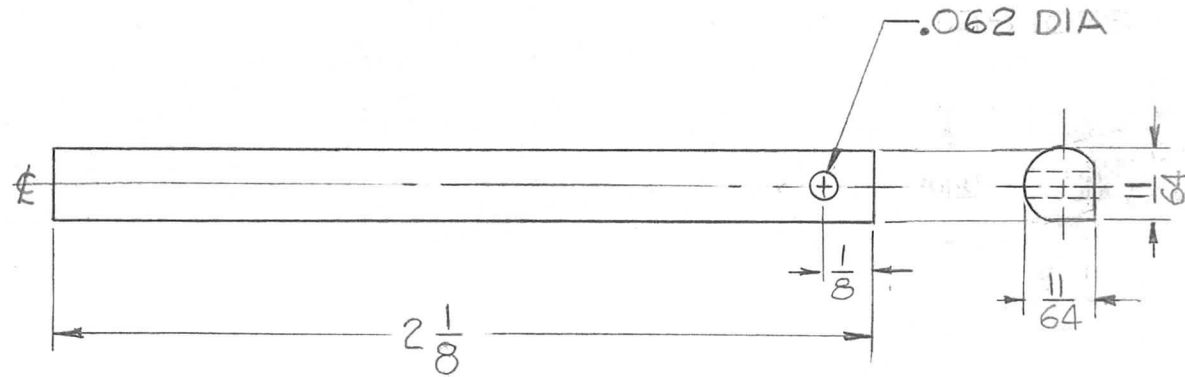


THE CONTENTS OF THIS DRAWING ARE THE EXCLUSIVE PROPERTY OF THE TECHNICAL MATERIEL CORP. ITS UNAUTHORIZED USE OR REPRODUCTION IN WHOLE OR IN PART IS STRICTLY FORBIDDEN.

REQ. PER UNIT	USED ON		
	MODEL	ASS'Y. NO.	DATE
1	HFR-1	AX-377	7-26-62

PM-800

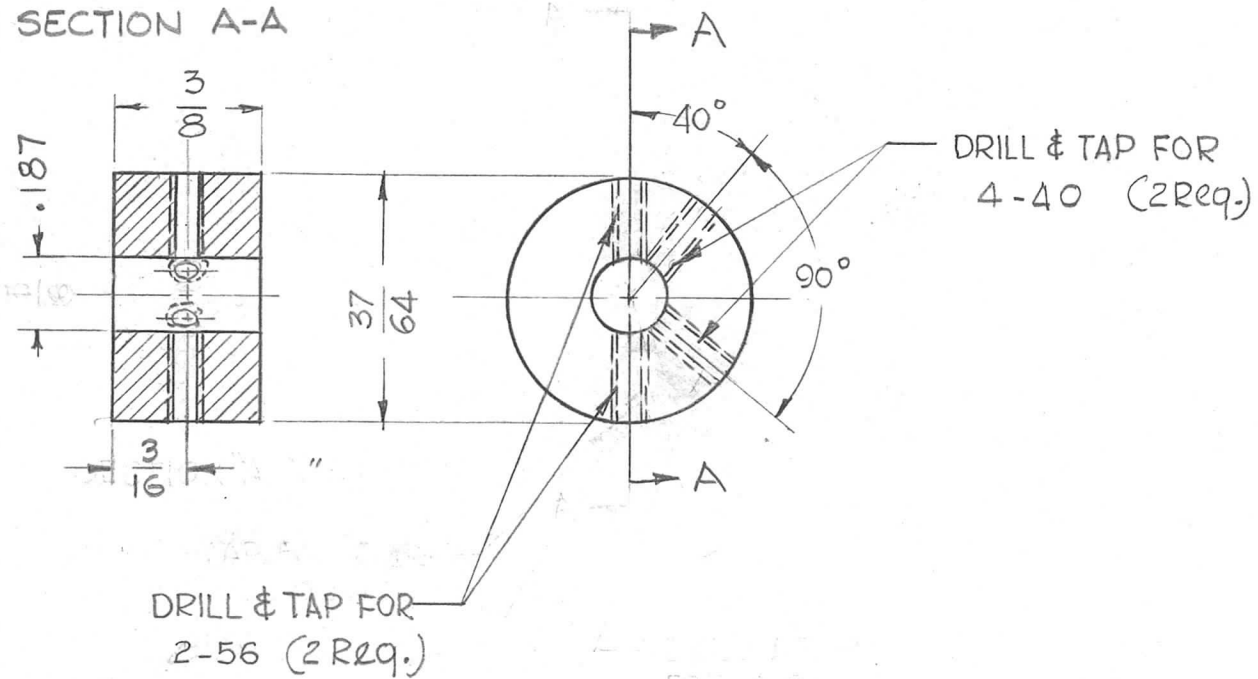


							REQ.	ITEM	PART NO.	KRUY	DESCRIPTION	SYMBOL	
									3/16 DIA. ROD.		THE TECHNICAL MATERIEL CORP. MAMARONECK, NEW YORK		
									STOCK SIZE				
									STEEL, STAINLESS		ROD, WHEEL, LOCKING		
									MATERIAL				
SYM	DESCRIPTION	DATE	CH. NO.	DRAFTS	CHECKER	ENG. APP.			# 303	G.D.L	<i>Handwritten initials</i>	<i>BP</i>	
UNLESS OTHERWISE SPECIFIED: DIMENSIONS ARE IN INCHES		SCALE: 1:1		MAXIMUM ALLOWABLE TOLERANCES HAVE BEEN DETERMINED AND ANY DEVIATIONS WILL BE CAUSE FOR REJECTION. REMOVE ALL BURRS AND SHARP EDGES					TYPE & TEMPER	HEATTREAT.SPEC.	DRAWN	CHECKED	FINAL APPROVAL
TOLERANCES ON FRAC. ± 1/64 DEC. ± .005 ANGLES ± 1/2°									S104 PASSIVATE		<i>TAK</i>		PM-800
									FINISH & SPEC. NO.	ELEC. DES. APP.	MECH. DES. APP.		

THE CONTENTS OF THIS DRAWING ARE THE EXCLUSIVE PROPERTY OF THE TECHNICAL MATERIEL CORP. ITS UNAUTHORIZED USE OR REPRODUCTION IN WHOLE OR IN PART IS STRICTLY FORBIDDEN.

REQ. PER UNIT	USED ON			PM-801
	MODEL	ASS'Y. NO.	DATE	
1	HFR-1	AX-377	7-26-62	

SECTION A-A



						REQ.	ITEM	PART NO.	KRUY	DESCRIPTION	SYMBOL	
									THE TECHNICAL MATERIEL CORP. MAMARONECK, NEW YORK			
								STEEL, STAINLESS	COUPLER, MTG, ROD			
								MATERIAL				
SYM	DESCRIPTION	DATE	CH. NO.	DRAFTS	CHECKER	ENG. APP.						
UNLESS OTHERWISE SPECIFIED: DIMENSIONS ARE IN INCHES		SCALE: AX-377		MAXIMUM ALLOWABLE TOLERANCES HAVE BEEN DETERMINED AND ANY DEVIATIONS WILL BE CAUSE FOR REJECTION. REMOVE ALL BURRS AND SHARP EDGES			# 303		G.D.L.	<i>HDe</i>	<i>BP</i>	
TOLERANCES ON FRAC. ± 1/64 DEC. ± .005 ANGLES ± 1/2°								TYPE & TEMPER	HEAT TREAT. SPEC.	DRAWN	CHECKED	FINAL APPROVAL
								S104 PASSIVATE			TAK	PM-801
								FINISH & SPEC. NO.	ELEC. DES. APP.	MECH. DES. APP.		

THE CONTENTS OF THIS DRAWING ARE THE EXCLUSIVE PROPERTY OF THE TECHNICAL MATERIEL CORP. ITS UNAUTHORIZED USE OR REPRODUCTION IN WHOLE OR IN PART IS STRICTLY FORBIDDEN.

REQ. PER UNIT

1

MODEL
HFR-1

USED ON

ASS'Y. NO.
AX-378

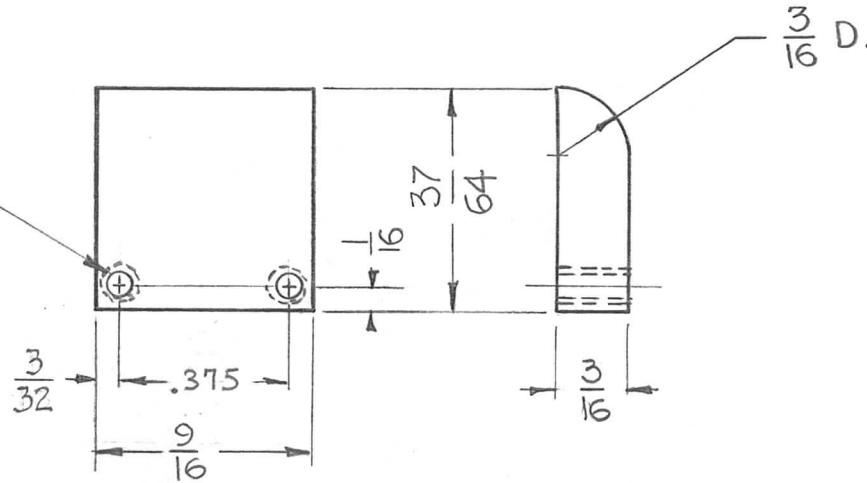
DATE

7-26-62

PM-805

A

DRILL & TAP FOR 2-56B.H.



REQ.	ITEM	PART NO.	DESCRIPTION	SYMBOL							
		KRUY	COVER, SLIDE INDICATOR								
STOCK SIZE			THE TECHNICAL MATERIEL CORP. MAMARONECK, NEW YORK								
BRASS			COVER, SLIDE INDICATOR								
MATERIAL											
SYM	DESCRIPTION	DATE	CH. NO.	DRAFTS	CHECKER	ENG. APP.	TYPE & TEMPER	HEAT TREAT. SPEC.	DRAWN	CHECKED	FINAL APPROVAL
UNLESS OTHERWISE SPECIFIED: DIMENSIONS ARE IN INCHES TOLERANCES ON FRAC. ± 1/64 DEC. ± .005 ANGLES ± 1/2°		SCALE: DO NOT SCALE					1/2 HARD		G.D.L.	H.O.	
MAXIMUM ALLOWABLE TOLERANCES HAVE BEEN DETERMINED AND ANY DEVIATIONS WILL BE CAUSE FOR REJECTION. REMOVE ALL BURRS AND SHARP EDGES		NONE						T.A.K.		PM-805	
		FINISH & SPEC. NO.		ELEC. DES. APP.		MECH. DES. APP.					

THE CONTENTS OF THIS DRAWING ARE THE EXCLUSIVE PROPERTY OF THE TECHNICAL MATERIEL CORP. ITS UNAUTHORIZED USE OR REPRODUCTION IN WHOLE OR IN PART IS STRICTLY FORBIDDEN.

REQ. PER UNIT

1

HFR-1

USED ON

MODEL

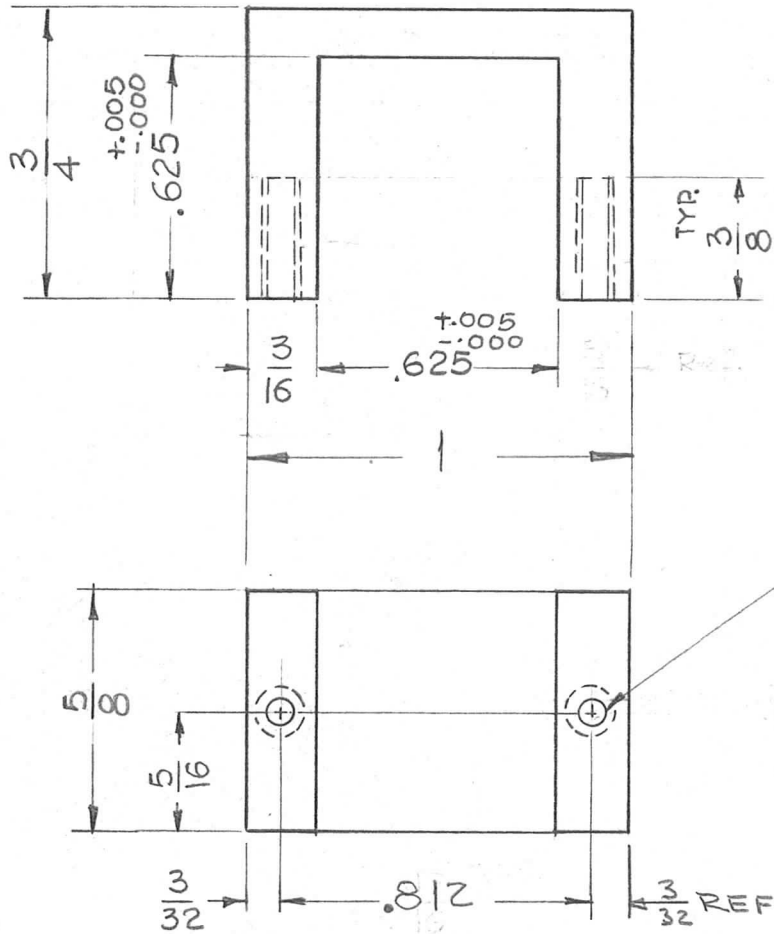
ASSY. NO.

DATE

AX-379

7-26-62

PM-807



DRILL & TAP FOR
2-56 (2 REQ.)

REQ.	ITEM	PART NO.	DESCRIPTION	SYMBOL							
		KRUY	THE TECHNICAL MATERIEL CORP. MAMARONECK, NEW YORK								
		STOCK SIZE	HOUSING, WHEEL, LOCKING								
		BRASS									
		MATERIAL									
SYM	DESCRIPTION	DATE	CH. NO.	DRAFTS	CHECKER	ENG. APP.	1/2 HARD	G.D.L.	JAC	BP	
UNLESS OTHERWISE SPECIFIED: DIMENSIONS ARE IN INCHES TOLERANCES ON FRAC. ± 1/64 DEC. ± .005 ANGLES ± 1/2°		SCALE: 1 AX-379		MAXIMUM ALLOWABLE TOLERANCES HAVE BEEN DETERMINED AND ANY DEVIATIONS WILL BE CAUSE FOR REJECTION. REMOVE ALL BURRS AND SHARP EDGES			TYPE & TEMPER	HEATTREAT. SPEC.	DRAWN	CHECKED	FINAL APPROVAL
							NONE		TAK	PM-807	
							FINISH & SPEC. NO.	ELEC. DES. APP.	MECH. DES. APP.		

THE CONTENTS OF THIS DRAWING ARE THE EXCLUSIVE PROPERTY OF THE TECHNICAL MATERIEL CORP. ITS UNAUTHORIZED USE OR REPRODUCTION IN WHOLE OR IN PART IS STRICTLY FORBIDDEN.

REQ. PER UNIT

1

MODEL

TRX-1

USED ON

ASS'Y. NO.

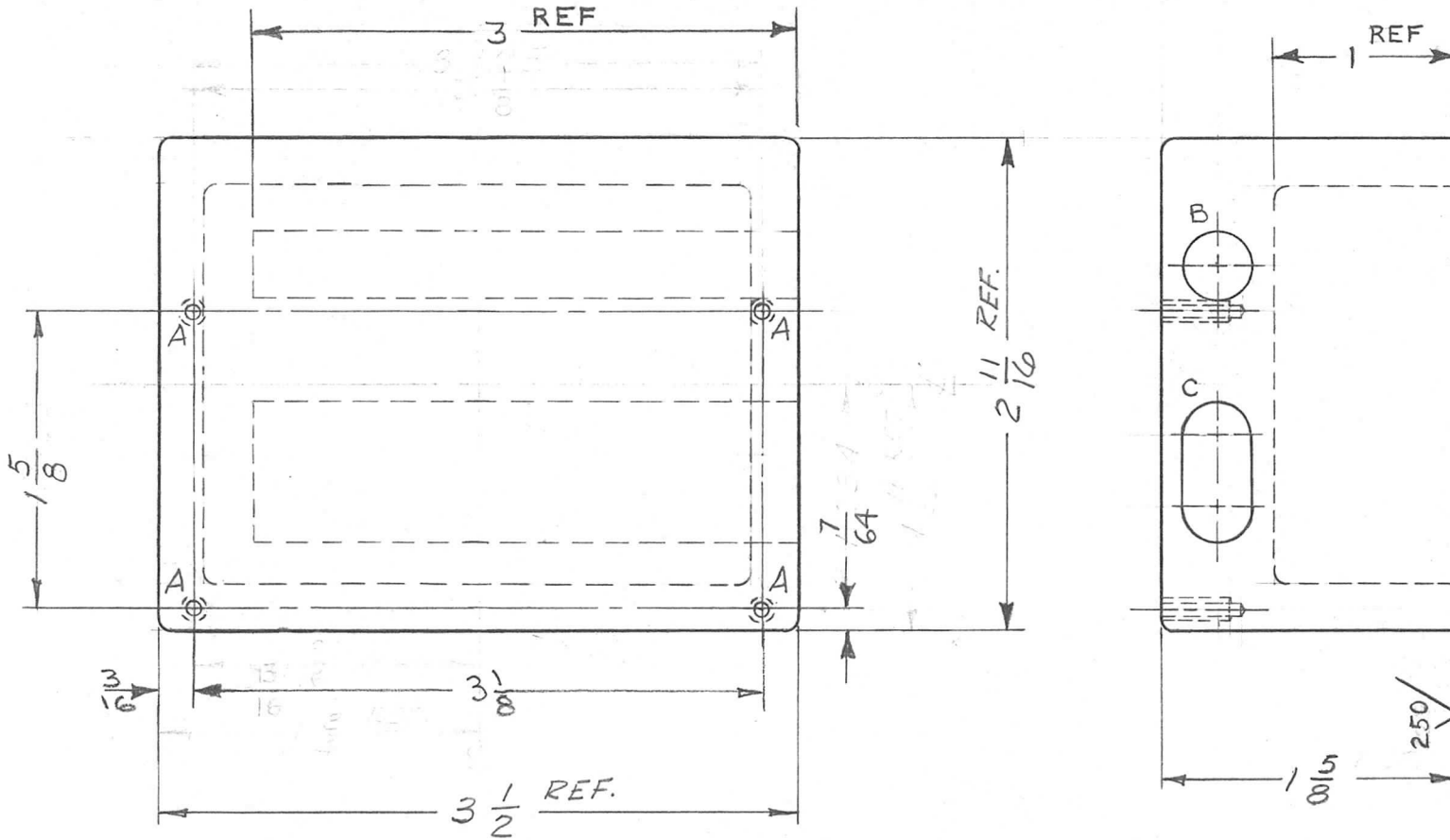
AO-III

DATE

8-27-62

PM-812

A



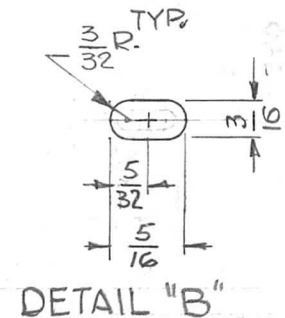
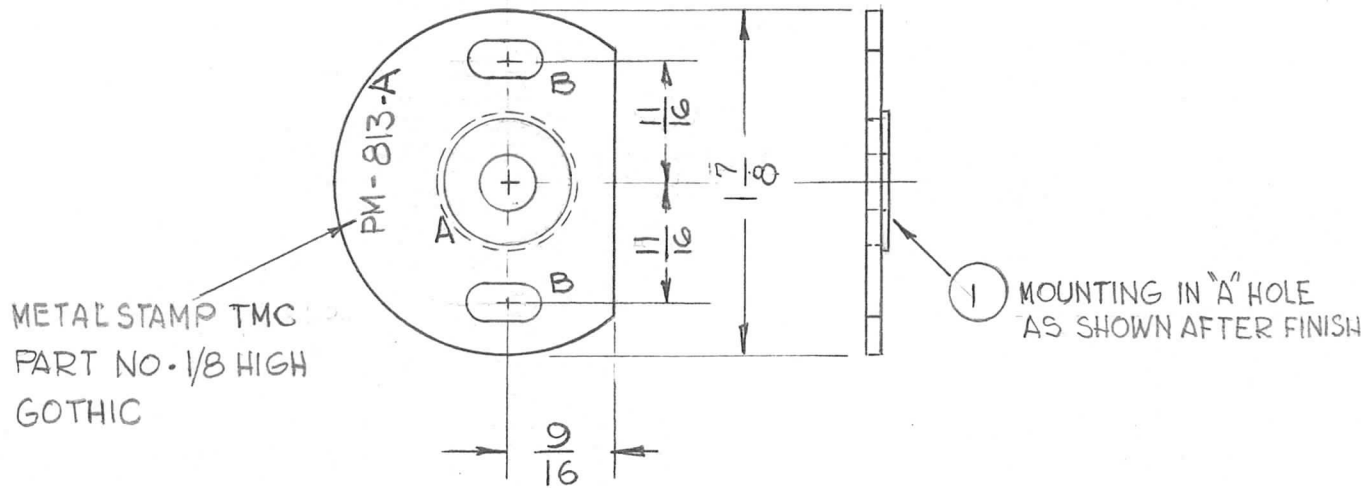
SYM.	DESCRIPTION	REQ'D
A	#36(106) DE., T/16 DEEP 6-32 NC-2, 3/8 DEEP	4
B	13/32 DIA X 3" DEEP	1
C	13/32 X 2 5/32 OVAL X 3" DEEP	1

REQ.	ITEM	PART NO.	J. STRUMER	DESCRIPTION	SYMBOL	
				THE TECHNICAL MATERIEL CORP. MAMARONECK, NEW YORK		
		STOCK SIZE		HEATER, MACHINING, XTAL		
A	B & C HOLES ADDED TO PICT. & BUILDUP	CS-126 (CASTING)				
SYM	DESCRIPTION	DATE	CH. NO.	DRAFTS	CHECKER	ENG. APP.
UNLESS OTHERWISE SPECIFIED: DIMENSIONS ARE IN INCHES TOLERANCES ON FRAC. $\pm 1/64$ DEC. $\pm .005$ ANGLES $\pm 1/2^\circ$		SCALE: FULL MAXIMUM ALLOWABLE TOLERANCES HAVE BEEN DETERMINED AND ANY DEVIATIONS WILL BE CAUSE FOR REJECTION. REMOVE ALL BURRS AND SHARP EDGES				
				T. RAMIREZ	3/13/63	BP
		TYPE & TEMPER	HEATTREAT. SPEC.	DRAWN	CHECKED	FINAL APPROVAL
				JMA	D. Noorani 3-13-63	PM-812 A
		FINISH & SPEC. NO.		ELEC. DES. APP.	MECH. DES. APP.	

THE CONTENTS OF THIS DRAWING ARE THE EXCLUSIVE PROPERTY OF THE TECHNICAL MATERIEL CORP. ITS UNAUTHORIZED USE OR REPRODUCTION IN WHOLE OR IN PART IS STRICTLY FORBIDDEN.

REQ. PER UNIT 2	USED ON		PM-813	A
	MODEL GPR-92	ASS'Y. NO.		

HOLE	DESCRIPTION	REQ.
A	.6249-.6246 DIA.	1
B	SEE DETAIL	2



						1	1	BB-126-5	BEARING, BALL	A
						REQ.	ITEM	PART NO.	DESCRIPTION	SYMBOL
								1/16 THK. STOCK SIZE	THE TECHNICAL MATERIEL CORP. MAMARONECK, NEW YORK	
								ALUMINUM	PLATE, MOUNTING, BEARING	
A	DIMS CLARIFIED	11-30-62	7758							
SYM	DESCRIPTION	DATE	CH. NO.	DRAFTS	CHECKER	ENG. APP.				
UNLESS OTHERWISE SPECIFIED: DIMENSIONS ARE IN INCHES		SCALE: DO NOT SCALE				5052-H32		G.D.L.	J.W.	BP
TOLERANCES ON FRAC. ± 1/64 DEC. ± .005 ANGLES ± 1/2°		MAXIMUM ALLOWABLE TOLERANCES HAVE BEEN DETERMINED AND ANY DEVIATIONS WILL BE CAUSE FOR REJECTION. REMOVE ALL BURRS AND SHARP EDGES				TYPE & TEMPER	HEATTREAT. SPEC.	DRAWN	CHECKED	FINAL APPROVAL
						YELLOW IRIDITE 5404			D.M.	PM-813
						FINISH & SPEC. NO.	ELEC. DES. APP.	MECH. DES. APP.		A

THE CONTENTS OF THIS DRAWING ARE THE EXCLUSIVE PROPERTY OF THE TECHNICAL MATERIEL CORP. ITS UNAUTHORIZED USE FOR REPRODUCTION IN WHOLE OR IN PART IS STRICTLY FORBIDDEN.

REQ. PER UNIT

1

HFR-1

USED ON

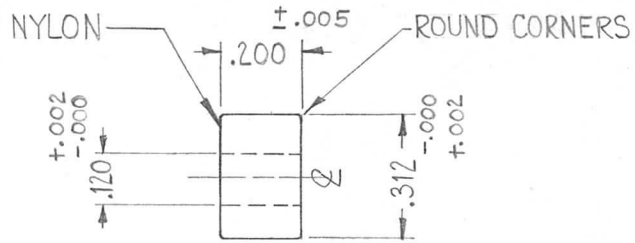
MODEL

ASS'Y. NO.

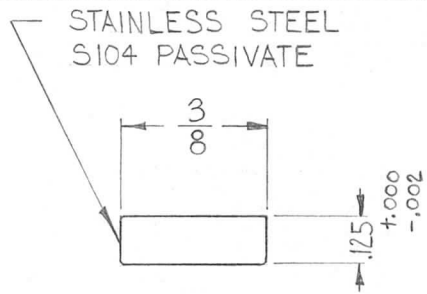
DATE

10-31-62

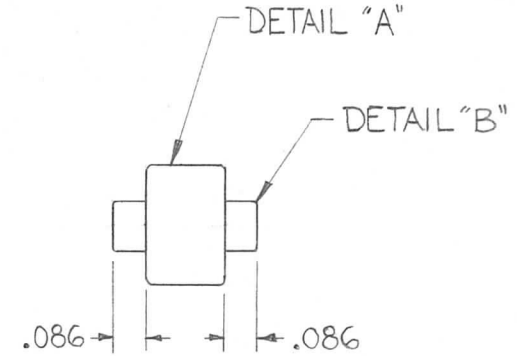
PM-814



"A" DETAIL



"B" DETAIL



REQ.	ITEM	PART NO.	DESCRIPTION			SYMBOL
		KRUY	THE TECHNICAL MATERIEL CORP. MAMARONECK, NEW YORK			
			ROLLER, DETENT			
			MATERIAL			
			W.A. FRANCO	FILE	BP	
			TYPE & TEMPER	HEAT TREAT. SPEC.	DRAWN	CHECKED
						FINAL APPROVAL
			FINISH & SPEC. NO.		ELEC. DES. APP.	MECH. DES. APP.
						PM-814

SYM	DESCRIPTION	DATE	CH. NO.	DRAFTS	CHECKER	ENG. APP.
	UNLESS OTHERWISE SPECIFIED DIMENSIONS ARE IN INCHES AND INCLUDE CHEMICALLY APPLIED OR PLATED FINISHES					
		SCALE	2X (DO NOT SCALE)			
	DECIMALS .X ± .05 .XX ± .01 .XXX ± .005	FRACTIONS ± 1/64 ANGLES ± 0° 30'	CODE			
	TOLERANCES					

THE CONTENTS OF THIS DRAWING ARE THE EXCLUSIVE PROPERTY OF THE TECHNICAL MATERIEL CORP. ITS UNAUTHORIZED USE FOR REPRODUCTION IN WHOLE OR IN PART IS STRICTLY FORBIDDEN.

REQ. PER UNIT

2

MODEL

GPR-92

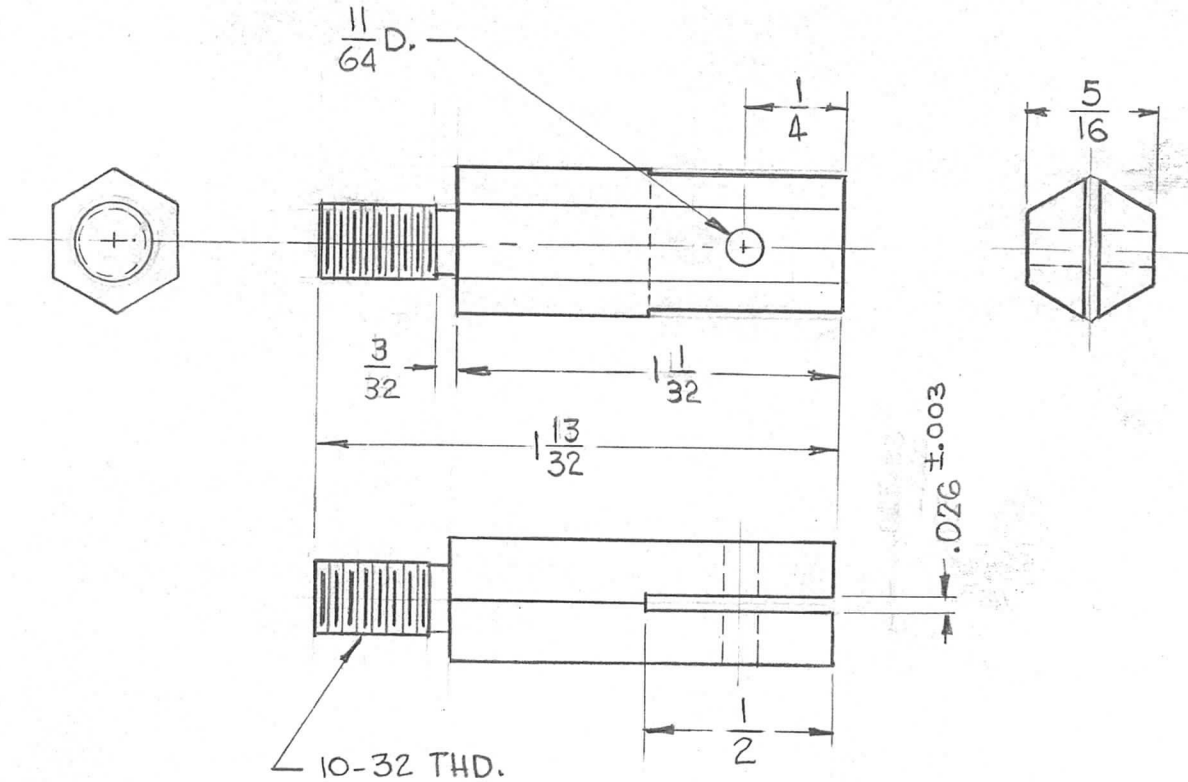
USED ON

ASS'Y. NO.

DATE

11-6-62

PM-816 B

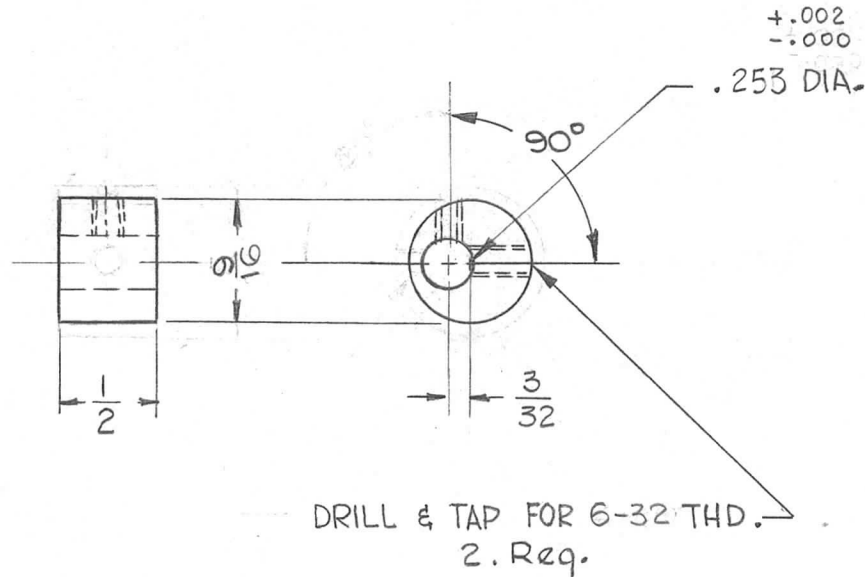


REQ. ITEM	PART NO.	STRUMER	DESCRIPTION	SYMBOL
B	5/16 (ACROSS FLAT) HEX ROD		THE TECHNICAL MATERIEL CORP. MAMARONECK, NEW YORK	
A	BRASS		PIN, HOLDER, SPRING	
UNLESS OTHERWISE SPECIFIED DIMENSIONS ARE IN INCHES AND INCLUDE CHEMICALLY APPLIED OR PLATED FINISHES		SCALE DO NOT SCALE		
DECIMALS .X ± .05 .XX ± .01 .XXX ± .005	FRACTIONS ± 1/64 ANGLES, ± 0° 30'	CODE		
TOLERANCES				
FREE TURNING	HEAT TREAT. SPEC.	DRAWN	CHECKED	FINAL APPROVAL
NONE		JMA	D.M.	PM-816 B
FINISH & SPEC. NO.	ELEC. DES. APP.	MECH. DES. APP.		

THE CONTENTS OF THIS DRAWING ARE THE EXCLUSIVE PROPERTY OF THE TECHNICAL MATERIEL CORP. ITS UNAUTHORIZED USE FOR REPRODUCTION IN WHOLE OR IN PART IS STRICTLY FORBIDDEN.

REQ. PER UNIT	USED ON		
	MODEL	ASS'Y. NO.	DATE
2	GPR-92	A-3095	11-7-62

PM-817 C

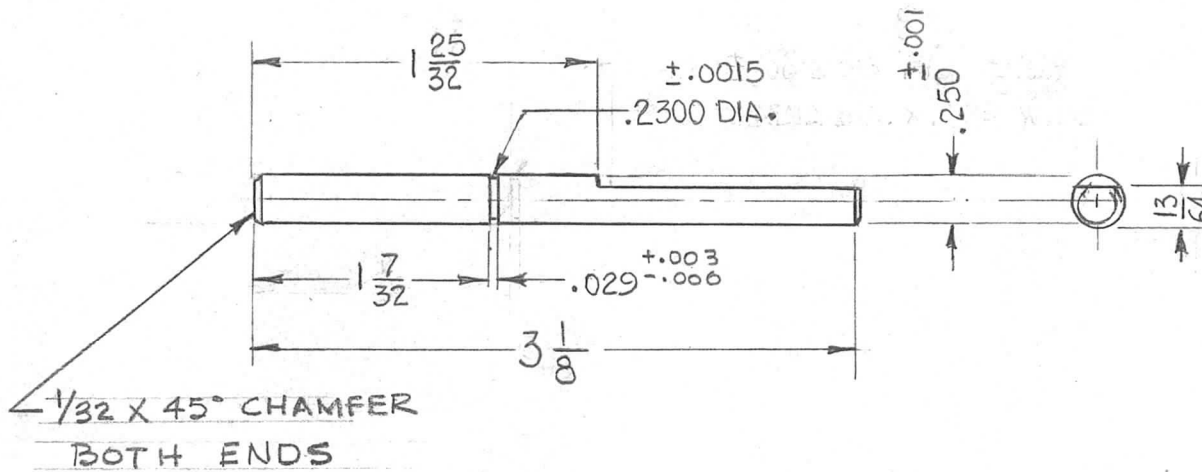


SYM	DESCRIPTION	DATE	CH. NO.	DRAFTS	CHECKER	ENG. APP.	REQ. ITEM	PART NO.	STRUMER DESCRIPTION	SYMBOL	
C	IN REVISION BLOCK CHG. NO. 9296 WAS 9269	11/2/63	10362	<i>MT</i>	<i>MT</i>	<i>MT</i>	5/8 DIA. ROD		THE TECHNICAL MATERIEL CORP. MAMARONECK, NEW YORK	CAM, LOCK, TUNING	
B	DRILL & TAP WAS FOR 4-40 THD.	9-23-63	9984	G.D.L.	<i>MT</i>	<i>MT</i>	STOCK SIZE				
A	RELOCATED TAPPED HOLE PART WAS 5/8 DIA, THD WAS 3-48	G-763	9296	<i>MT</i>	<i>MT</i>	<i>MT</i>	BRASS				
UNLESS OTHERWISE SPECIFIED DIMENSIONS ARE IN INCHES AND INCLUDE CHEMICALLY APPLIED OR PLATED FINISHES							SCALE				
							DO NOT SCALE				
DECIMALS .X ± .05 .XX ± .01 .XXX ± .005							FRACTIONS ± 1/64 ANGLES ± 0° 30'	TOLERANCES			
CODE							FREE TURNING		G.D.L.	<i>file</i>	<i>MA</i> <i>BP</i>
							TYPE & TEMPER	HEAT TREAT. SPEC.	DRAWN	CHECKED	FINAL APPROVAL
							NONE		<i>MA</i>	<i>D.M.</i>	PM-817 C
							FINISH & SPEC. NO.	ELEC. DES. APP.	MECH. DES. APP.		

THE CONTENTS OF THIS DRAWING ARE THE EXCLUSIVE PROPERTY OF THE TECHNICAL MATERIEL CORP. ITS UNAUTHORIZED USE FOR REPRODUCTION IN WHOLE OR IN PART IS STRICTLY FORBIDDEN.

REQ. PER UNIT	USED ON		
	MODEL	ASS'Y. NO.	DATE
2	GPR-92	A-3095	11-7-62

PM-818



REQ.	ITEM	PART NO.	STRUMER	DESCRIPTION	SYMBOL
		.250 DIA. ROD		THE TECHNICAL MATERIEL CORP. MAMARONECK, NEW YORK	
		STOCK SIZE			
		BRASS, FREE TURN		SHAFT, CAM, LOCK	
		MATERIAL			
		FREE TURNING	G.D.L.	<i>AD</i>	<i>AMA BP</i>
		TYPE & TEMPER	DRAWN	CHECKED	FINAL APPROVAL
		HEAT TREAT. SPEC.	<i>AMA</i>	<i>D.M.</i>	PM-818
		NICKEL PLATE PER S-135			
		FINISH & SPEC. NO.	ELEC. DES. APP.	MECH. DES. APP.	

UNLESS OTHERWISE SPECIFIED DIMENSIONS ARE IN INCHES AND INCLUDE CHEMICALLY APPLIED OR PLATED FINISHES

DECIMALS
 .X ± .05
 .XX ± .01
 .XXX ± .005

FRACTIONS
 ± 1/64
 ANGLES
 ± 0° 30'

TOLERANCES

SCALE
DO NOT SCALE

SYM DESCRIPTION DATE CH. NO. DRAFTS CHECKER ENG. APP.

THE CONTENTS OF THIS DRAWING ARE THE EXCLUSIVE PROPERTY OF THE TECHNICAL MATERIEL CORP. ITS UNAUTHORIZED USE OR REPRODUCTION IN WHOLE OR IN PART IS STRICTLY FORBIDDEN.

REQ. PER UNIT

1 RAK-215

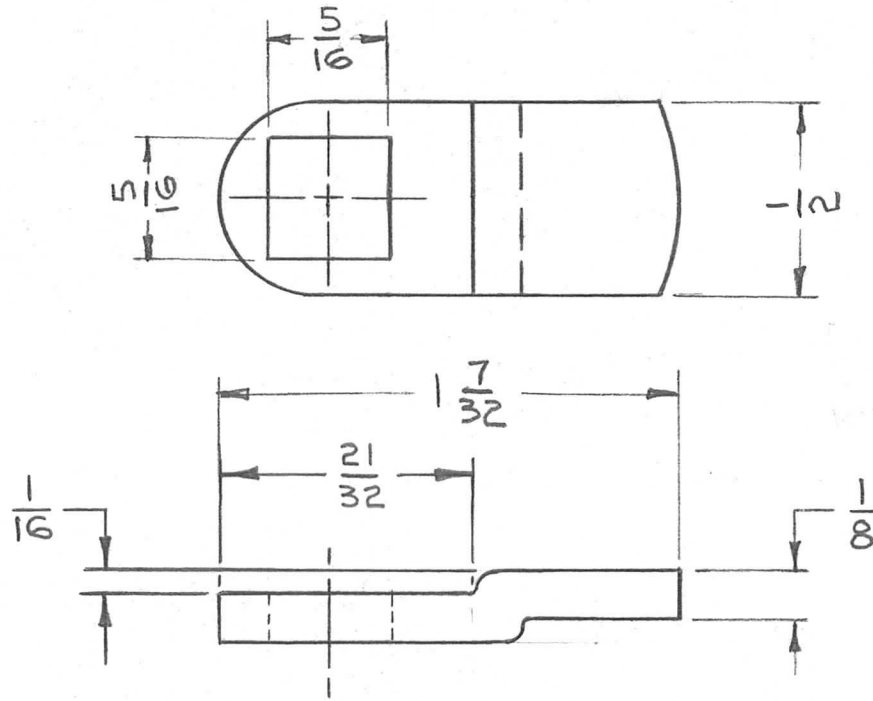
USED ON

MODEL

ASS'Y. NO.

DATE

PM-824



REF: CORBIN LOCK Co. (CAM # C2S) MODIFIED PER TMC REQUIREMENTS.

REQ.	ITEM	PART NO.	DESCRIPTION			SYMBOL
		1/8 THK	THE TECHNICAL MATERIEL CORP.			
		STOCK SIZE	MAMARONECK, NEW YORK			
		STEEL	CAM, LOCK			
		MATERIAL				
SYM	DESCRIPTION	DATE	CH. NO.	DRAFTS	CHECKER	ENG. APP.
UNLESS OTHERWISE SPECIFIED:		SCALE: NO SCALE				
DIMENSIONS ARE IN INCHES		MAXIMUM ALLOWABLE TOLERANCES HAVE BEEN DETERMINED AND ANY DEVIATIONS WILL BE CAUSE FOR REJECTION.				
TOLERANCES ON		REMOVE ALL BURRS AND SHARP EDGES				
FRAC. ± 1/64 DEC. ± .005 ANGLES ± 1/2°		COLD ROLLED				
		TYPE & TEMPER	HEATTREAT. SPEC.	DRAWN	CHECKED	FINAL APPROVAL
		NICKEL PLATE S-135				
		FINISH & SPEC. NO.	ELEC. DES. APP.	MECH. DES. APP.	PM-824	

THE CONTENTS OF THIS DRAWING ARE THE EXCLUSIVE PROPERTY OF THE TECHNICAL MATERIEL CORP. ITS UNAUTHORIZED USE FOR REPRODUCTION IN WHOLE OR IN PART IS STRICTLY FORBIDDEN.

REQ. PER UNIT

4

USED ON

MODEL

RAK-21

ASS'Y. NO.

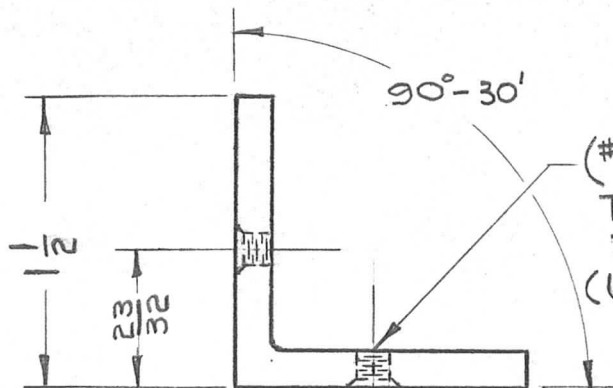
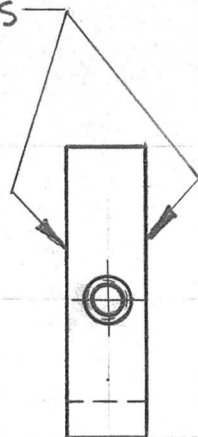
A-3126

DATE

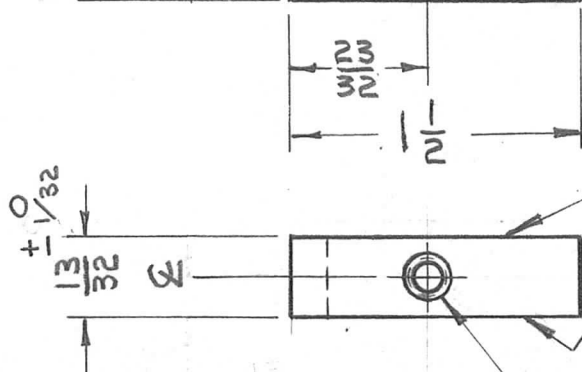
12-26

PM-826

THESE SURFACES TO BE FREE OF BURRS



(#21).159 DIA
TAP #10-32 NF
2 HOLES
(USE DRILL JIG)



THESE SURFACES TO BE FREE OF BURRS

NOTES:
1. REMOVE ALL BURRS AND SHARP EDGES

CSK 82° x .250 DIA
2 PLACES

REQ.	ITEM	PART NO.	DESCRIPTION	SYMBOL
		1 1/2 x 1 1/2 x 3/16 THK	THE TECHNICAL MATERIEL CORP. MAMARONECK, NEW YORK	BRACE, ANGLE CORNER
		STOCK SIZE		
		EXTR'D ALUMINUM		
		MATERIAL		
		6063-T5		
		TYPE & TEMPER	HEAT TREAT. SPEC.	
		CLEAR IRIDIPT S-404		
		FINISH & SPEC. NO.	ELEC. DES. APP.	MECH. DES. APP.
				PM-826

THE CONTENTS OF THIS DRAWING ARE THE EXCLUSIVE PROPERTY OF THE TECHNICAL MATERIEL CORP. ITS UNAUTHORIZED USE OR REPRODUCTION IN WHOLE OR IN PART IS STRICTLY FORBIDDEN.

REQ. PER UNIT

1

MODEL

RAK-21

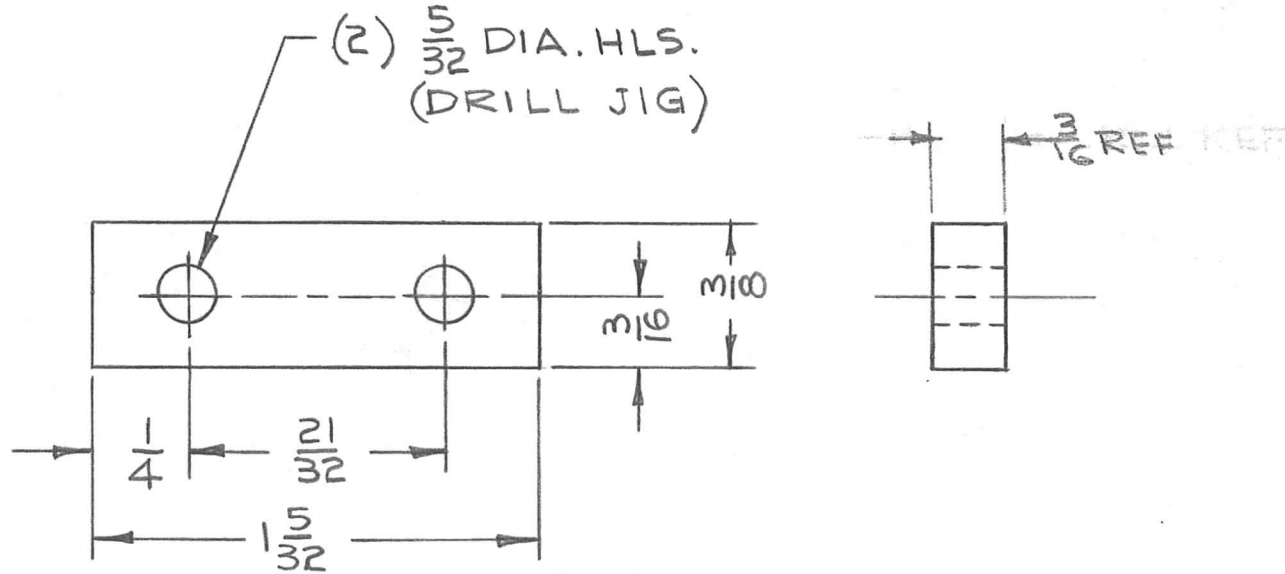
USED ON

ASS'Y. NO.

DATE

A-3126

PM-827

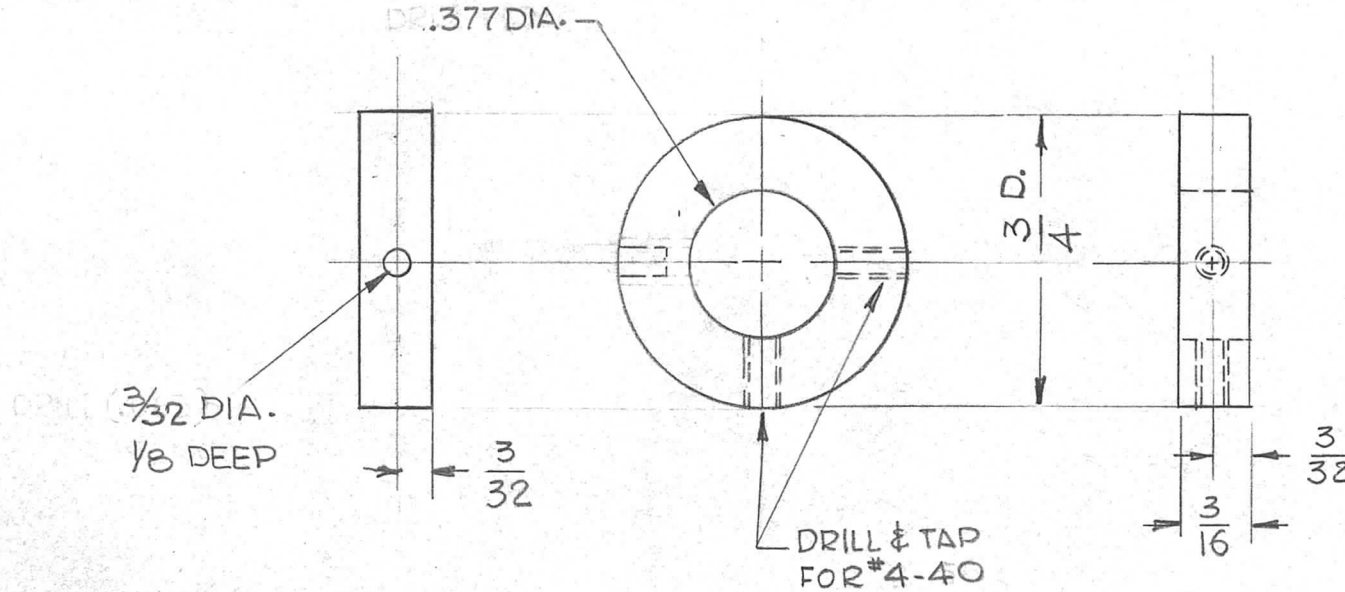


REQ.	ITEM	PART NO.	DESCRIPTION	SYMBOL									
			KRUY										
		3/16 THK	THE TECHNICAL MATERIEL CORP.										
		STOCK SIZE	MAMARONECK, NEW YORK										
		ALUMINUM	SPACER, BAR										
		MATERIAL											
SYM	DESCRIPTION	DATE	CH. NO.	DRAFTS	CHECKER	ENG. APP.							
UNLESS OTHERWISE SPECIFIED:		SCALE: NO SCALE		A		3052-H32		DRAWN		CHECKED		FINAL APPROVAL	
DIMENSIONS ARE IN INCHES		MAXIMUM ALLOWABLE TOLERANCES HAVE BEEN DETERMINED AND ANY DEVIATIONS WILL BE CAUSE FOR REJECTION.		REMOVE ALL BURRS AND SHARP EDGES		CLEAR IRIDITE S-404		T. Krueger		BP		PM-827	
TOLERANCES ON		FRAC. $\pm 1/64$ DEC. $\pm .005$ ANGLES $\pm 1/2^\circ$		FINISH & SPEC. NO.		ELEC. DES. APP.		MECH. DES. APP.					

THE CONTENTS OF THIS DRAWING ARE THE EXCLUSIVE PROPERTY OF THE TECHNICAL MATERIEL CORP. ITS UNAUTHORIZED USE FOR REPRODUCTION IN WHOLE OR IN PART IS STRICTLY FORBIDDEN.

REQ. PER UNIT	USED ON		
	MODEL	ASS'Y. NO.	DATE
1	GPR-92	A-3128	2-21-62

PM-833 A



REQ.	ITEM	PART NO.	STRUMER DESCRIPTION				SYMBOL
		3/4 O.D.	THE TECHNICAL MATERIEL CORP.				
		STOCK SIZE	MAMARONECK, NEW YORK				
		ALUMINUM	COLLAR, SHAFT				
		MATERIAL					
		2024-T3	G.D.L.	J.H.C.	BP		
		TYPE & TEMPER	DRAWN	CHECKED	FINAL APPROVAL		
		S404 IRIDITE	JMA	MP	PM-833 A		
		FINISH & SPEC. NO.	ELEC. DES. APP.	MECH. DES. APP.			

UNLESS OTHERWISE SPECIFIED DIMENSIONS ARE IN INCHES AND INCLUDE CHEMICALLY APPLIED OR PLATED FINISHES		SCALE	
		DO NOT SCALE	
DECIMALS	FRACTIONS	CODE	
.X ± .05	± 1/64		
.XX ± .01	ANGLES		
.XXX ± .005	± 0° 30'		
TOLERANCES			

THE CONTENTS OF THIS DRAWING ARE THE EXCLUSIVE PROPERTY OF THE TECHNICAL MATERIEL CORP. ITS UNAUTHORIZED USE FOR REPRODUCTION IN WHOLE OR IN PART IS STRICTLY FORBIDDEN.

REQ. PER UNIT

USED ON

MODEL

ASS'Y. NO.

DATE

14

TFR-5000-3000

A-3130

3-5-63

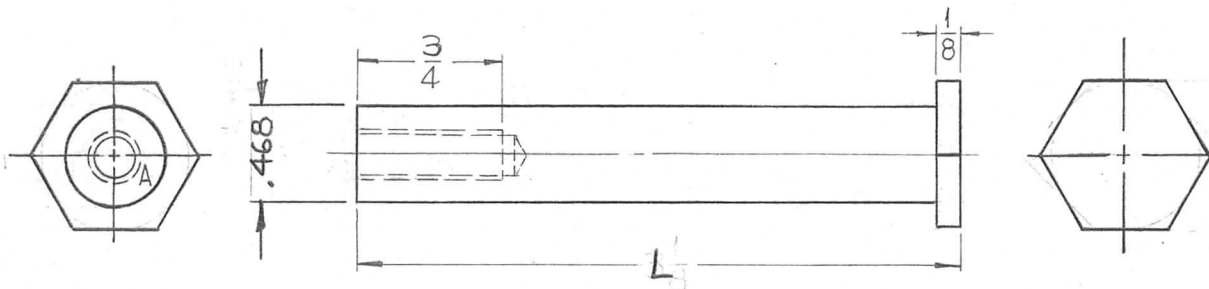
PM-834

B

TMC NO.	L	UNIT	REQ
PM-834-1	3-1/8	TFR-5000-3000	14
PM-834-2	3-5/8	TFR-15K-600BF	28

HOLE:

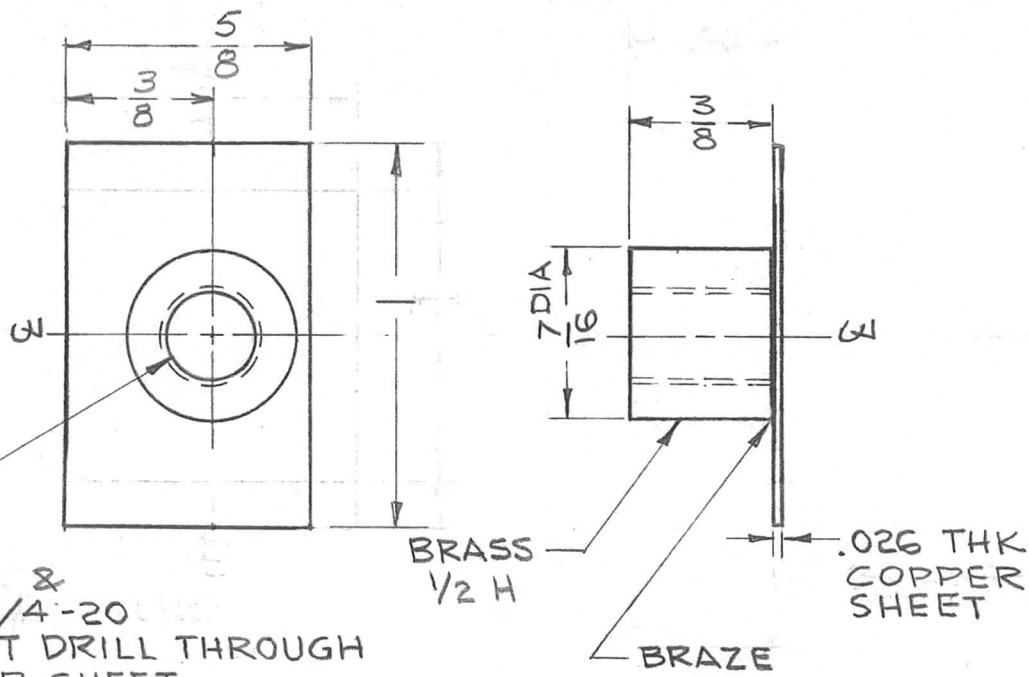
A ~ DRILL & TAP FOR
1/4-20



REQ.	ITEM	PART NO.	F. BUDETTI	DESCRIPTION	SYMBOL					
		3/4 HEX. ROD		THE TECHNICAL MATERIEL CORP. MAMARONECK. NEW YORK						
B	SEE EMN#10877	2/10/64 10877 A.M. TR		RETAINER, SPRING						
A	.468 ± .005 DIA WAS 1/2 DIA. STOCK WAS 3/4 DIAROD.	8-6-63 9723 A.K. JAB								
SYM	DESCRIPTION	DATE	CH. NO.	DRAFTS	CHECKER	ENG. APP.	MATERIAL			
UNLESS OTHERWISE SPECIFIED DIMENSIONS ARE IN INCHES AND INCLUDE CHEMICALLY APPLIED OR PLATED FINISHES		SCALE		5052-H32		SRG	aa	BP		
DECIMALS .X ± .05 .XX ± .01 .XXX ± .005		FRACTIONS ± 1/64 ANGLES ± 0° 30'		TOLERANCES		TYPE & TEMPER	HEAT TREAT. SPEC.	DRAWN	CHECKED	FINAL APPROVAL
		CODE		S404 YELLOW IRIDITE						PM-834 B
				FINISH & SPEC. NO.		ELEC. DES. APP.	MECH. DES. APP.			

THE CONTENTS OF THIS DRAWING ARE THE EXCLUSIVE PROPERTY OF THE TECHNICAL MATERIEL CORP. ITS UNAUTHORIZED USE FOR REPRODUCTION IN WHOLE OR IN PART IS STRICTLY FORBIDDEN.

REQ. PER UNIT	USED ON			PM-836	B
	MODEL	ASS'Y. NO.	DATE		
1	TU-2		4-2-63		



DRILL & TAP 1/4-20
DO NOT DRILL THROUGH
COPPER SHEET

REQ.	ITEM	PART NO.	PRITCHARD DESCRIPTION				SYMBOL
		SEE PICTORIAL STOCK SIZE	THE TECHNICAL MATERIEL CORP. MAMARONECK, NEW YORK				
B	ADDED 3/8 DIM 5/8 WAS 3/4 DELE. REF: PM 836	5.1.68	18903	HS	EFM		
A	1" WAS 3/4	2.23.66	15836	HLA	MM		
SYM	DESCRIPTION	DATE	CH. NO.	DRAFTS	CHECKER	ENG. APP.	
UNLESS OTHERWISE SPECIFIED DIMENSIONS ARE IN INCHES AND INCLUDE CHEMICALLY APPLIED OR PLATED FINISHES		SCALE					
DECIMALS .X ± .05 .XX ± .01 .XXX ± .005		TOLERANCES		FRACTIONS ± 1/64 ANGLES ± 0° 30'		CODE	
				TYPE & TEMPER		HEAT TREAT. SPEC.	
				DRAWN		CHECKED	
				FINISH & SPEC. NO.		ELEC. DES. APP.	
				MECH. DES. APP.		PM-836 B	

THE CONTENTS OF THIS DRAWING ARE THE EXCLUSIVE PROPERTY OF THE TECHNICAL MATERIEL CORP. ITS UNAUTHORIZED USE FOR REPRODUCTION IN WHOLE OR IN PART IS STRICTLY FORBIDDEN.

REQ. PER UNIT

2

USED ON

MODEL

GPT-200K

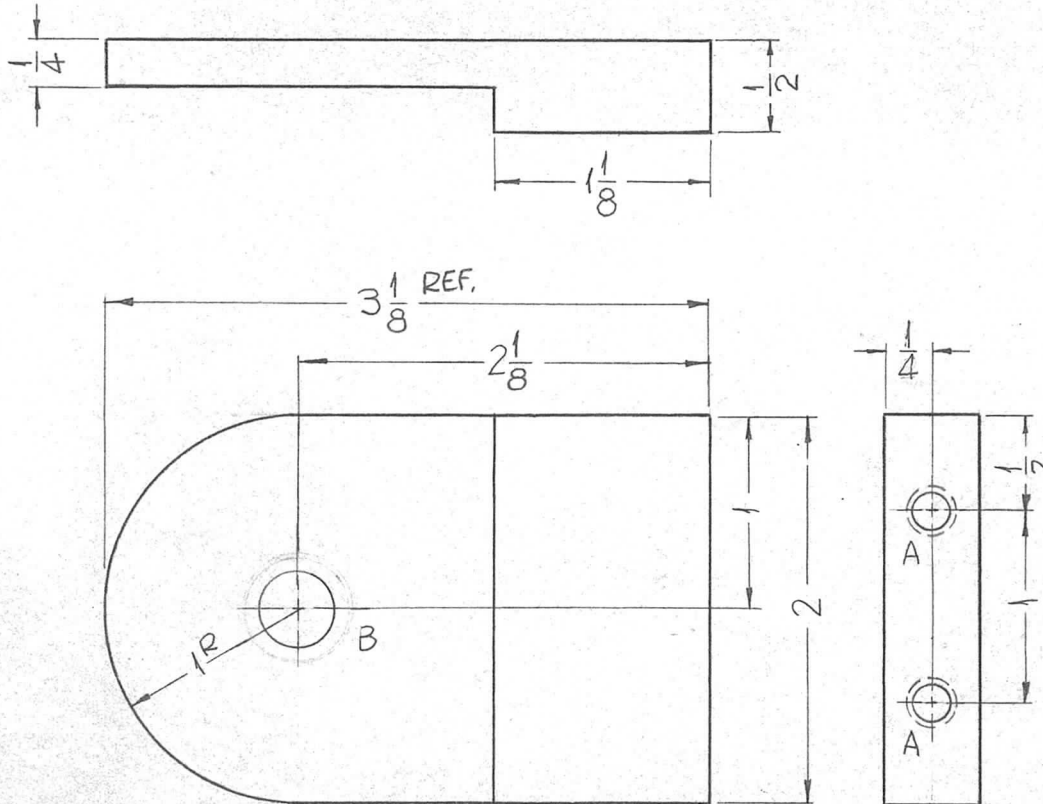
ASS'Y. NO.

AX-395

DATE

5-9-63

PM-844 0



HOLES:

A ~ DRILL & TAP FOR 1/4-20 X 1/2 DEEP.
(2 REQ.)

B ~ 25/64 DIA. (1REQ.)

REQ.	ITEM	PART NO.	F. BUDETTI			DESCRIPTION	SYMBOL
		1/2 THICK	THE TECHNICAL MATERIEL CORP.				
		STOCK SIZE	MAMARONECK.				
		ALUMINUM	NEW YORK			SUPPORT, BANDSWITCH	
						2 ND Π, FRONT	
0	ORIGINAL RELEASE	5.16.64		hwb			
SYM	DESCRIPTION	DATE	CH. NO.	DRAFTS	CHECKER	ENG. APP.	
UNLESS OTHERWISE SPECIFIED DIMENSIONS ARE IN INCHES AND INCLUDE CHEMICALLY APPLIED OR PLATED FINISHES		SCALE					
DECIMALS		FRACTIONS	CODE				
.X ± .05		± 1/64					
.XX ± .01	TOLERANCES	ANGLES					
.XXX ± .005		± 0° 30'					
		5052	H 32	SRG	aa	hbc	
		TYPE & TEMPER HEAT TREAT. SPEC.		DRAWN	CHECKED	FINAL APPROVAL	
		S404 YELLOW IRIDITE		BB	5/21/64	PM-844 0	
		FINISH & SPEC. NO.		ELEC. DES. APP.	MECH. DES. APP.		

THE CONTENTS OF THIS DRAWING ARE THE EXCLUSIVE PROPERTY OF THE TECHNICAL MATERIEL CORP. ITS UNAUTHORIZED USE FOR REPRODUCTION IN WHOLE OR IN PART IS STRICTLY FORBIDDEN.

REQ. PER UNIT

2

MODEL

GPT-200K

USED ON

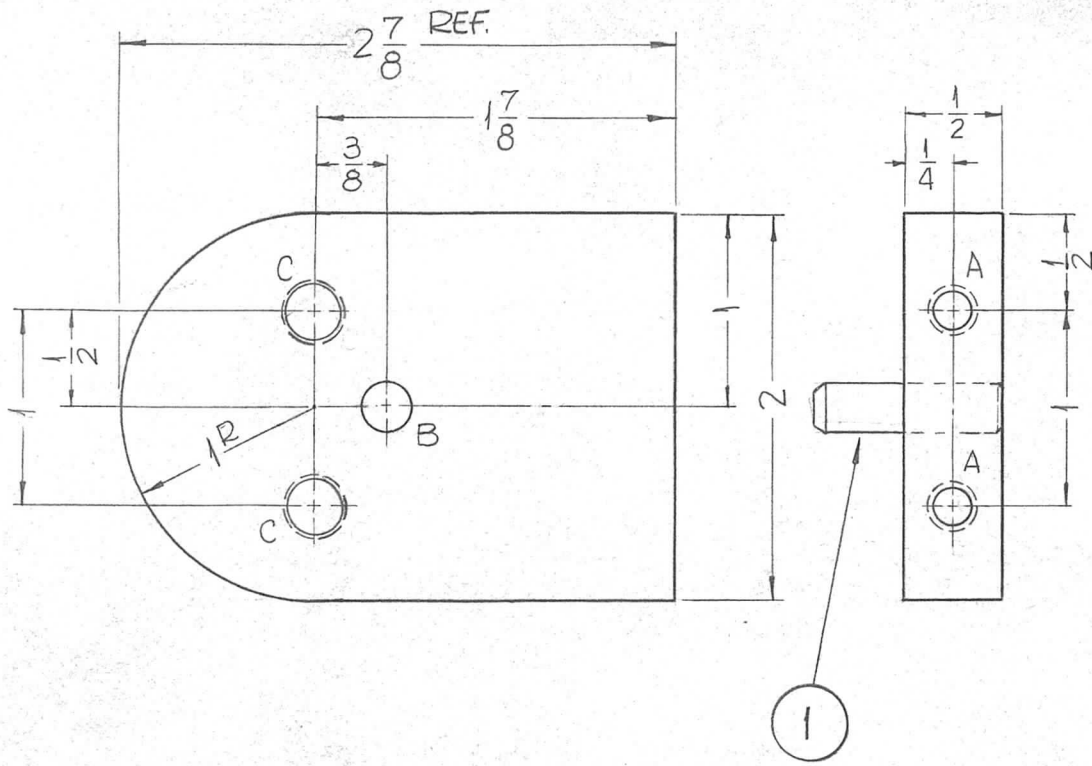
ASS'Y. NO.

AX-395

DATE

5-9-63

PM-845 0



HOLES:

- A ~ DRILL & TAP FOR 1/4-20 X 1/2 DEEP. (2REQ.)
- B ~ .249 $\pm .001$ DIA. (1REQ.)
- C ~ DRILL & TAP FOR 5/16-18 THRU (2REQ.)

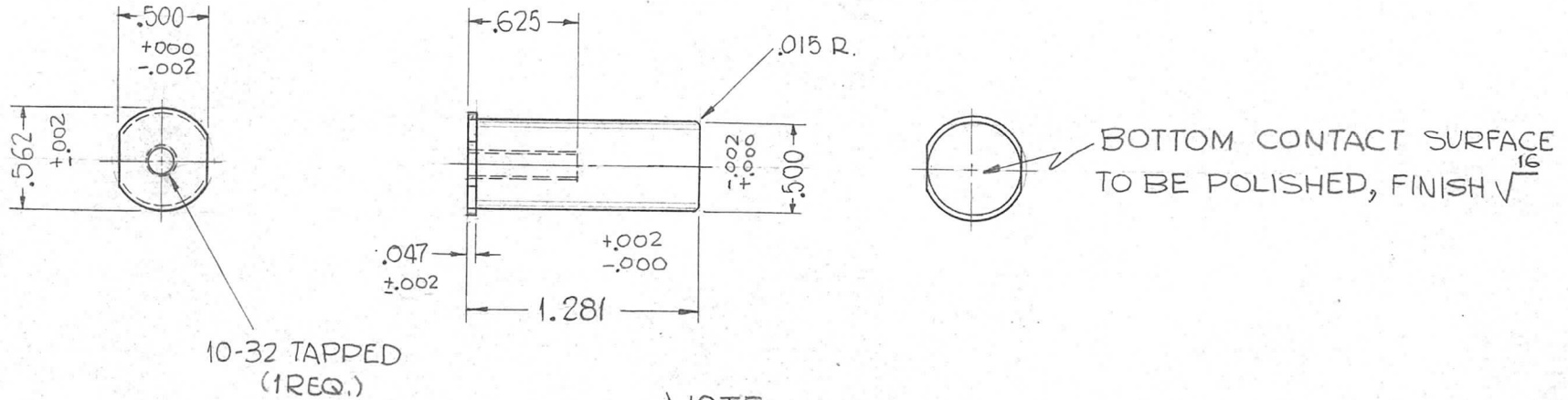
1	1	PN-116-C-8-S	PIN, DOWEL		
REQ.	ITEM	PART NO.	F. BUDETTI		DESCRIPTION
			1/2 THICK		SYMBOL
			STOCK SIZE		THE TECHNICAL MATERIEL CORP. MAMARONECK, NEW YORK
			ALUMINUM		
			MATERIAL		
			5052	H32	2 ND TT, REAR
			SRG	aa	RAL
			S404 YELLOW IRIDITE		
			FINISH & SPEC. NO.		
			ELEC. DES. APP.		MECH. DES. APP.
			PM-845		0

0	ORIGINAL RELEASE	5.16.64			WB	
X2	PIN ADDED	3-19-64				
SYM	DESCRIPTION	DATE	CH. NO.	DRAFTS	CHECKER	ENG. APP.
UNLESS OTHERWISE SPECIFIED DIMENSIONS ARE IN INCHES AND INCLUDE CHEMICALLY APPLIED OR PLATED FINISHES		SCALE				
DECIMALS .X ± .05 .XX ± .01 .XXX ± .005	TOLERANCES	FRACTIONS ± 1/64 ANGLES ± 0° 30'	CODE			

THE CONTENTS OF THIS DRAWING ARE THE EXCLUSIVE PROPERTY OF THE TECHNICAL MATERIEL CORP. ITS UNAUTHORIZED USE FOR REPRODUCTION IN WHOLE OR IN PART IS STRICTLY FORBIDDEN.

REQ. PER UNIT	USED ON		
	MODEL	ASS'Y. NO.	DATE
24	GPT-200K, AS-123	AX-447	12-12-62
12	GPT-200K, AS-123	AX-448	5-11-64

PM-846 0



NOTE:

UNLESS OTHERWISE SPECIFIED,
 POLISH BEFORE PLATING
 ROUND ALL EDGES. 1/32 R.
 S-245-SILVER PLATE BRIGHT
 RHODIUM PLATE .000010

REQ.	ITEM	PART NO.	F. BUDETTI DESCRIPTION			SYMBOL
		9/16 DIA. ROD	THE TECHNICAL MATERIEL CORP.			
		STOCK SIZE	MAMARONECK. NEW YORK			
0	ORIGINAL RELEASE	ROUND HARD DRAWN COPPER	SLUG, CONTACT, BANDSWITCH			
		MATERIAL				
SYM	DESCRIPTION	DATE	CH. NO.	DRAFTS	CHECKER	ENG. APP.
	UNLESS OTHERWISE SPECIFIED DIMENSIONS ARE IN INCHES AND INCLUDE CHEMICALLY APPLIED OR PLATED FINISHES	SCALE				
DECIMALS	TOLERANCES	FRACTIONS	CODE			
.X ± .05		± 1/64				
.XX ± .01		ANGLES				
.XXX ± .005		± 0° 30'				
		TYPE & TEMPER	HEAT TREAT. SPEC.	DRAWN	CHECKED	FINAL APPROVAL
		S 245 SILVER PLATE BRIGHT		SRG	aa pb	SRG
		FINISH & SPEC. NO.	ELEC. DES. APP.	MECH. DES. APP.		
						PM-846 0

THE CONTENTS OF THIS DRAWING ARE THE EXCLUSIVE PROPERTY OF THE TECHNICAL MATERIEL CORP. ITS UNAUTHORIZED USE OR REPRODUCTION IN WHOLE OR IN PART IS STRICTLY FORBIDDEN.

REQ. PER UNIT
4

MODEL
GPT-200K

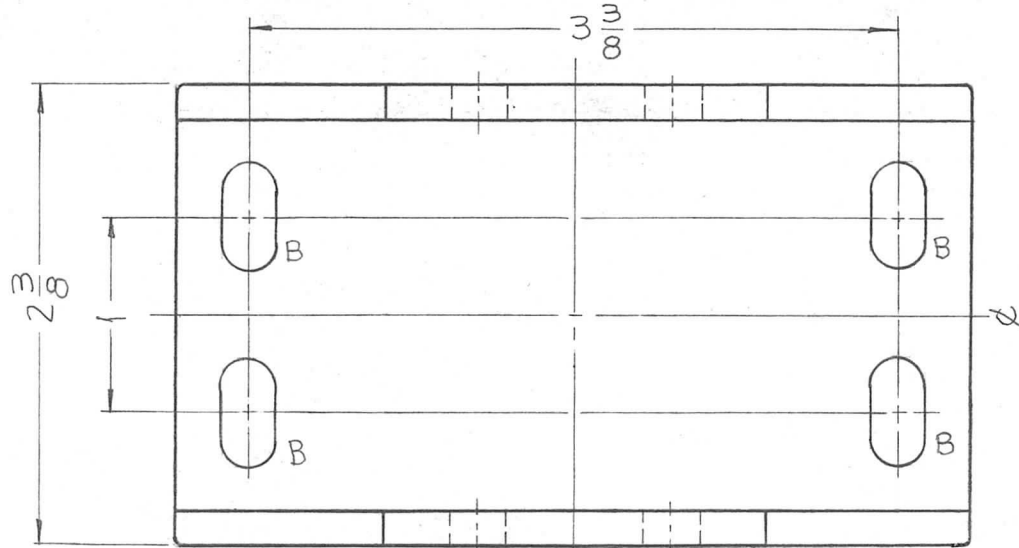
USED ON

ASS'Y. NO.
AS-123

DATE
12-7-62

PM-847

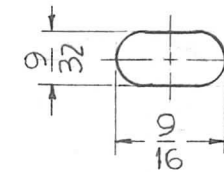
0



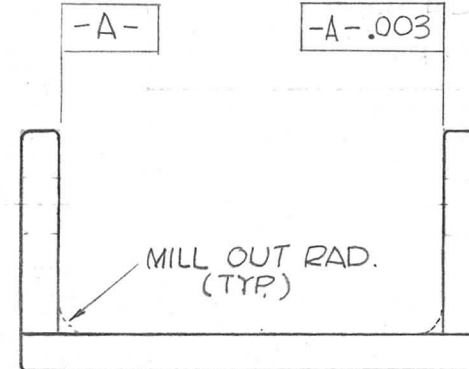
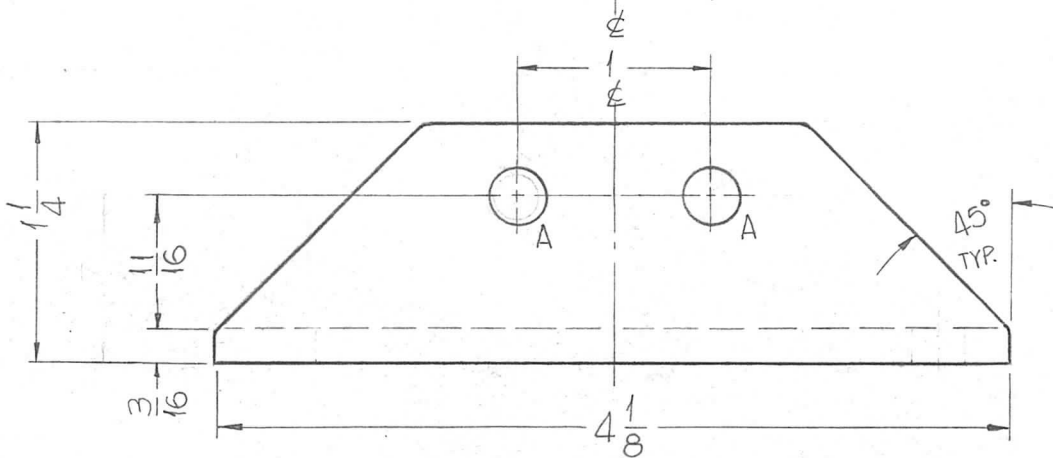
HOLES:

A - 9/32 DIA. (4 REQ.)

B - SEE DETAIL



B-DETAIL
(4 REQ.)



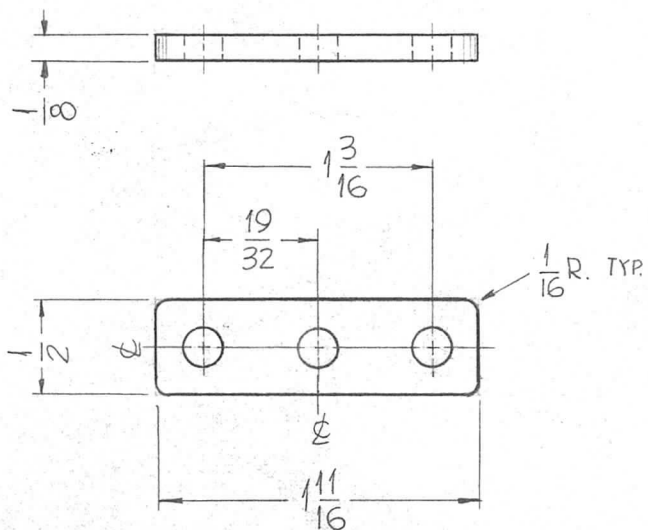
NOTE: ROUND EDGES & CORNERS 1/32 RADIUS

						REQ. ITEM	PART NO.	F. BUDETTI DESCRIPTION			SYMBOL	
							1-1/4 X 2-3/8 X 1-1/4 X .188	THE TECHNICAL MATERIEL CORP. MAMARONECK, NEW YORK				
							STOCK SIZE	SUPPORT, LEG				
							EXTRUDED ALUMINUM					
							MATERIAL					
SYM	DESCRIPTION	DATE	CH. NO.	DRAFTS	CHECKER	ENG. APP.	DIE NO. 2296	SRG	aa	Roe		
UNLESS OTHERWISE SPECIFIED: DIMENSIONS ARE IN INCHES		SCALE:					TYPE & TEMPER	HEATTREAT. SPEC.	DRAWN	CHECKED	FINAL APPROVAL	
TOLERANCES ON FRAC. ± 1/64 DEC. ± .005 ANGLES ± 1/2°		MAXIMUM ALLOWABLE TOLERANCES HAVE BEEN DETERMINED AND ANY DEVIATIONS WILL BE CAUSE FOR REJECTION. REMOVE ALL BURRS AND SHARP EDGES					S404 YELLOW IRIDITE				PM-847 0	
						FINISH & SPEC. NO.	ELEC. DES. APP.	MECH. DES. APP.				

THE CONTENTS OF THIS DRAWING ARE THE EXCLUSIVE PROPERTY OF THE TECHNICAL MATERIEL CORP. ITS UNAUTHORIZED USE FOR REPRODUCTION IN WHOLE OR IN PART IS STRICTLY FORBIDDEN.

REQ. PER UNIT	USED ON		
	MODEL	ASS'Y. NO.	DATE
8	GPT-200K AS-123	AX-447	12-12-62
4	GPT-200K AS-123	AX-448	12-12-62

PM-848 0



HOLES

15/64 DIA. (3REQ.)

FINISH NOTE:

ROUND ALL EDGES 1/32 R.
POLISH BEFORE PLATING
S245 - SILVER PLATE, BRIGHT
S-423 - IRIDITE, 18-P SILVER KOTE

REQ.	ITEM	PART NO.	F. BUDETTI			DESCRIPTION	SYMBOL		
		1/8 THICK	THE TECHNICAL MATERIEL CORP.						
		STOCK SIZE	MAMARONECK, NEW YORK						
0	ORIGINAL RELEASE	5.16.64	JWB			CONTACT HOLDER, BANDSWITCH			
X1	MTG HOLES WERE 3/16 DIA	10-21-63							
SYM	DESCRIPTION	DATE	CH. NO.	DRAFTS	CHECKER	ENG. APP.			
UNLESS OTHERWISE SPECIFIED DIMENSIONS ARE IN INCHES AND INCLUDE CHEMICALLY APPLIED OR PLATED FINISHES		SCALE		HALF HARD				SRG	
DECIMALS .X ± .05 .XX ± .01 .XXX ± .005		FRACTIONS ± 1/64 ANGLES ± 0° 30'		TYPE & TEMPER		HEAT TREAT. SPEC.	DRAWN	CHECKED	FINAL APPROVAL
TOLERANCES		CODE		SEE NOTE		SRG		aa lb	KAC
				FINISH & SPEC. NO.		ELEC. DES. APP.	MECH. DES. APP.	PM-848	0

THE CONTENTS OF THIS DRAWING ARE THE EXCLUSIVE PROPERTY OF THE TECHNICAL MATERIEL CORP. ITS UNAUTHORIZED USE FOR REPRODUCTION IN WHOLE OR IN PART IS STRICTLY FORBIDDEN.

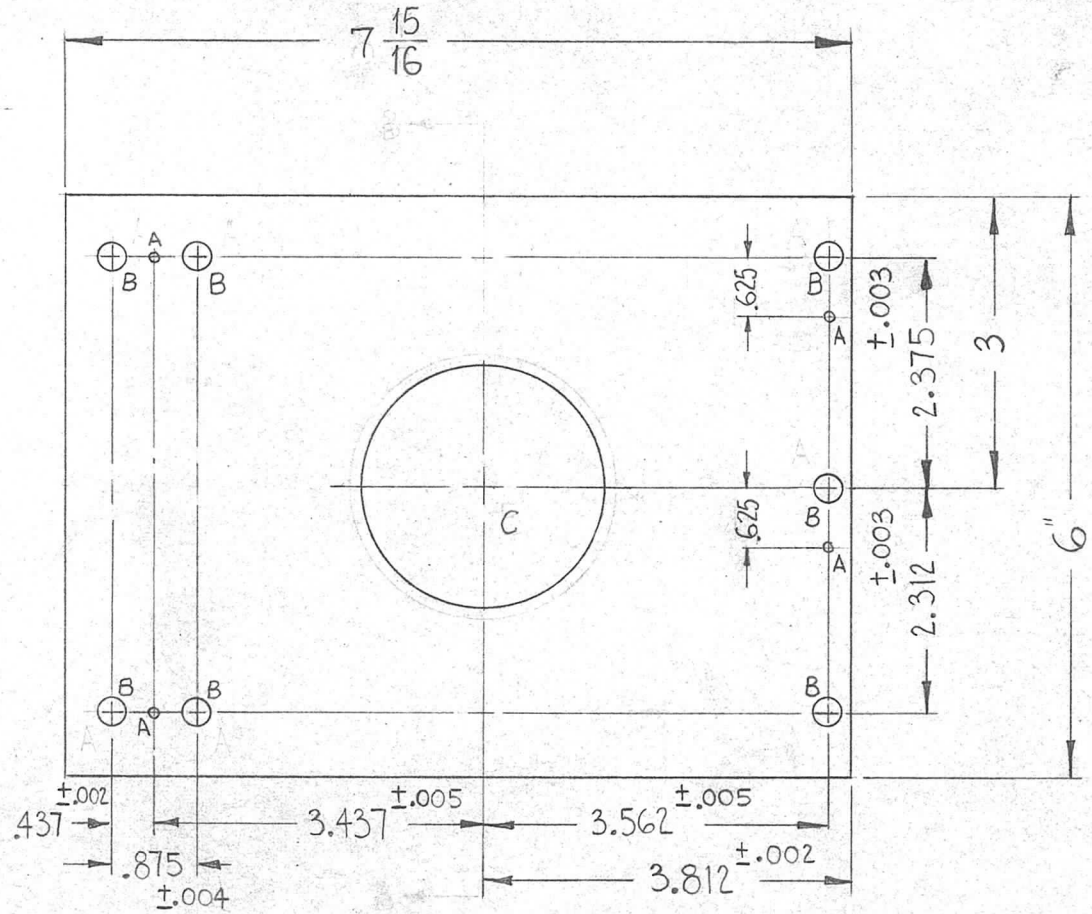
REQ. PER UNIT

MODEL
GPT-200K (AS-123)

USED ON
ASS'Y. NO.
A-2681

DATE
5-24-63

PM-855 0



A ~ 1/8 DIA. (SEE NOTE) 4 REQ.
B ~ .281 DIA. 7 REQ.
C ~ 2.5000^{+0.0000}/_{-0.0005} DIA. 1 REQ.

METAL STAMP TMC PART NO. 1/8 HIGH GOTHIC. (PM-855:0)

NOTE:
SHOULD BE DRILLED & PINNED UPON ASS'Y.

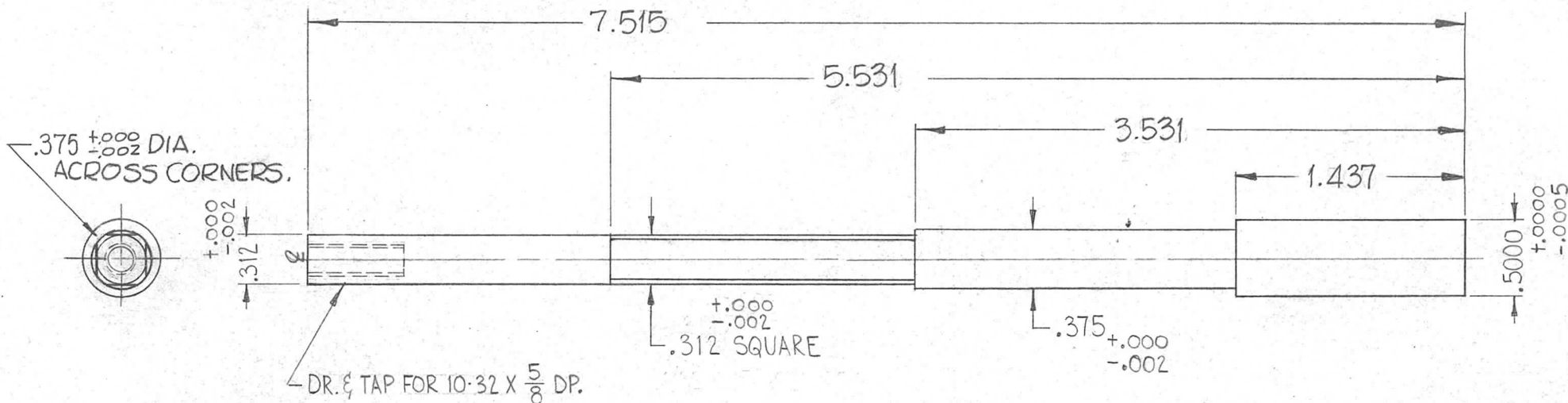
1 BEARING TO BE WRINGING FIT (CLASS 5), INSERTED AFTER MACHINING & IRIDITING.

±.000
-.002
.375

1	1	BB-120-5	BEARING, RACE		
REQ.	ITEM	PART NO.	F. BUDETTI	DESCRIPTION	SYMBOL
		.375	THE TECHNICAL MATERIEL CORP. MAMARONECK, NEW YORK		
		ALUMINUM	PLATE, RETAINING BEARING		
○	ORIGINAL RELEASE FOR PRODUCTION	3-6-64			
SYM	DESCRIPTION	DATE	CH. NO.	DRAFTS	CHECKER ENG. APP.
UNLESS OTHERWISE SPECIFIED DIMENSIONS ARE IN INCHES AND INCLUDE CHEMICALLY APPLIED OR PLATED FINISHES		SCALE (DO NOT SCALE)			
DECIMALS .X ± .05 .XX ± .01 .XXX ± .005	FRACTIONS ± 1/64 ANGLES ± 0° 30'	CODE A	2024-T4		
TOLERANCES		S404 YELLOW IRIDITE		W.A. FRANCO	QA 8/6 RJC 4-7-64
		FINISH & SPEC. NO.		DRAWN	CHECKED
		ELEC. DES. APP.		MECH. DES. APP.	FINAL APPROVAL
		PM-855			0

THE CONTENTS OF THIS DRAWING ARE THE EXCLUSIVE PROPERTY OF THE TECHNICAL MATERIEL CORP. ITS UNAUTHORIZED USE FOR REPRODUCTION IN WHOLE OR IN PART IS STRICTLY FORBIDDEN.

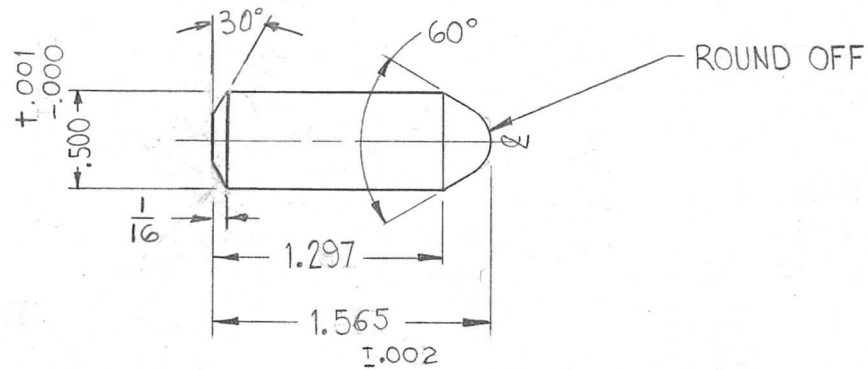
REQ. PER UNIT	USED ON			PM-863	0
	MODEL	ASS'Y. NO.	DATE		
1	GPT-200K (AS-123)	A-2681	5-24-63		



								REQ. ITEM	PART NO.	F. BUDETTI	DESCRIPTION	SYMBOL
								AS NOTED			THE TECHNICAL MATERIEL CORP.	
								STOCK SIZE			MAMARONECK.	
								STAINLESS STEEL			NEW YORK	
								MATERIAL			SHAFT, WORM GEAR	
○	ORIGINAL RELEASE FOR PRODUCTION	3-6-64						303		W.A. FRANCO	aaqab Rie	
SYM	DESCRIPTION	DATE	CH. NO.	DRAFTS	CHECKER	ENG. APP.		TYPE & TEMPER	HEAT TREAT. SPEC.	DRAWN	CHECKED	FINAL APPROVAL
	UNLESS OTHERWISE SPECIFIED DIMENSIONS ARE IN INCHES AND INCLUDE CHEMICALLY APPLIED OR PLATED FINISHES							S104-PASSIVATE				
	DECIMALS .X \pm .05 .XX \pm .01 .XXX \pm .005	FRACTIONS \pm 1/64 ANGLES \pm 0° 30'	SCALE FULL (DO NOT SCALE)	CODE A				FINISH & SPEC. NO.		ELEC. DES. APP.	MECH. DES. APP.	PM-863
												0

THE CONTENTS OF THIS DRAWING ARE THE EXCLUSIVE PROPERTY OF THE TECHNICAL MATERIEL CORP. ITS UNAUTHORIZED USE FOR REPRODUCTION IN WHOLE OR IN PART IS STRICTLY FORBIDDEN.

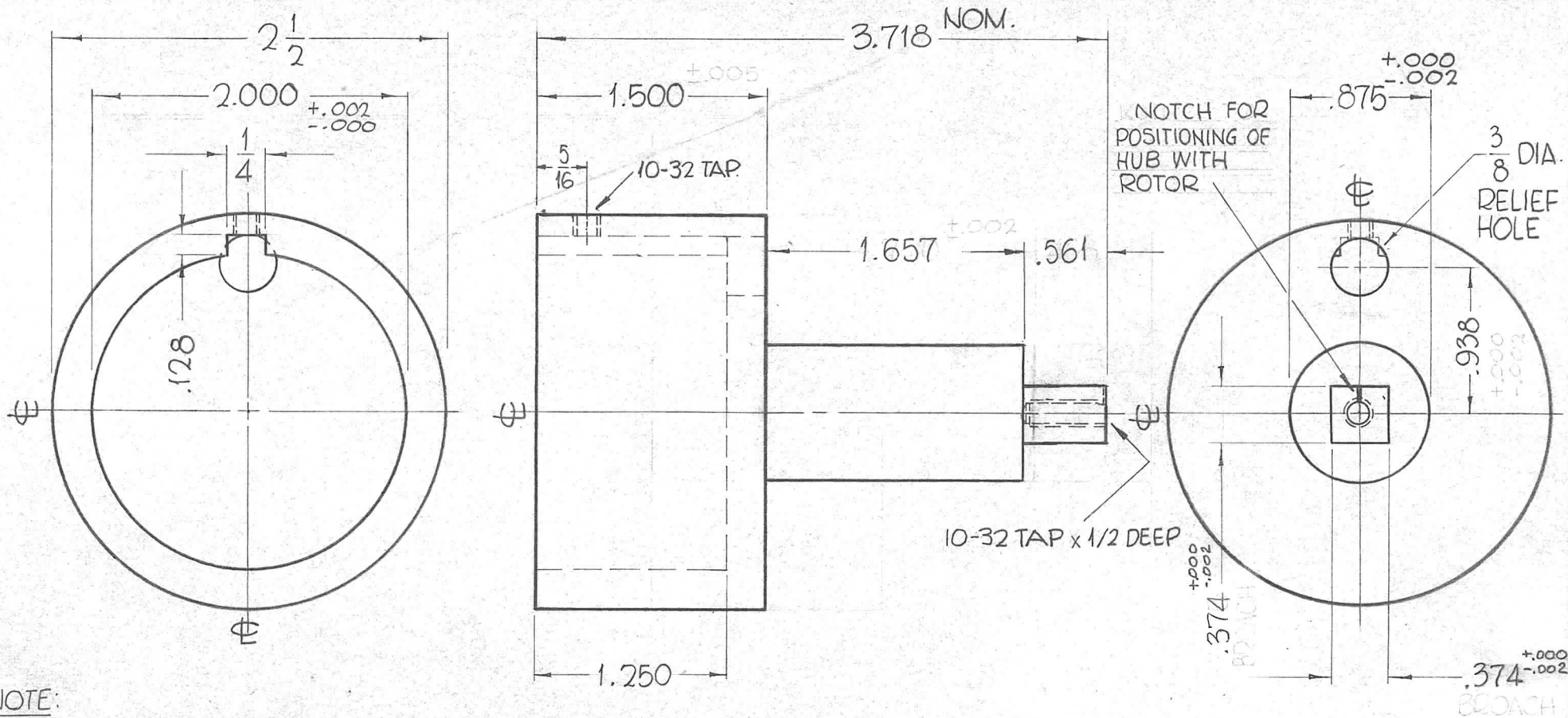
REQ. PER UNIT	USED ON			PM-864	0
	MODEL	ASS'Y. NO.	DATE		
1	GPT-200K (AS-123)	A-2681	5-23-63		



							REQ. ITEM	PART NO.	F. BUDETTI	DESCRIPTION	SYMBOL	
								1/2 DIA.	THE TECHNICAL MATERIEL CORP. MAMARONECK, NEW YORK			
								STAINLESS STEEL	SHAFT, DETENT			
								MATERIAL				
○ ORIGINAL RELEASE FOR PRODUCTION	3-6-64							303	W.A. FRANCO	aa	RAC 4-7-64	
SYM	DESCRIPTION	DATE	CH. NO.	DRAFTS	CHECKER	ENG. APP.						
UNLESS OTHERWISE SPECIFIED DIMENSIONS ARE IN INCHES AND INCLUDE CHEMICALLY APPLIED OR PLATED FINISHES		SCALE FULL (DO NOT SCALE)										
DECIMALS .X ± .05 .XX ± .01 .XXX ± .005	TOLERANCES	FRACTIONS ± 1/64 ANGLES ± 0° 30'	CODE A					S104-PASSIVATE	DRWN	CHECKED	FINAL APPROVAL	
											PM-864	
									ELEC. DES. APP.	MECH. DES. APP.	0	

THE CONTENTS OF THIS DRAWING ARE THE EXCLUSIVE PROPERTY OF THE TECHNICAL MATERIEL CORP. ITS UNAUTHORIZED USE FOR REPRODUCTION IN WHOLE OR IN PART IS STRICTLY FORBIDDEN.

REQ. PER UNIT	USED ON			PM-865	0
	MODEL	ASS'Y. NO.	DATE		
1	GPT-200K	AS-123	5-16-63		



NOTE:
1/32 RADIUS ON ALL EDGES.

REQ.	ITEM	PART NO.	F. BUDETTI	DESCRIPTION	SYMBOL	
				THE TECHNICAL MATERIEL CORP. MAMARONECK, NEW YORK		
O	ORIGINAL RELEASE	5.16.64	ASB	HUB, TOP		
X1	2, 10-32 HOLES ADDED 1.657 WAS 1.750, .561 WAS .468	12-27-63	SRG	1ST TT		
SYM	DESCRIPTION	DATE	CH. NO.	DRAFTS	CHECKER	ENG. APP.
UNLESS OTHERWISE SPECIFIED DIMENSIONS ARE IN INCHES AND INCLUDE CHEMICALLY APPLIED OR PLATED FINISHES			SCALE			
DECIMALS .X ± .05 .XX ± .01 .XXX ± .005	TOLERANCES	FRACTIONS ± 1/64 ANGLES ± 0° 30'	CODE			
303			John C. Biele	aa	RAC	
TYPE & TEMPER		HEAT TREAT. SPEC.	DRAWN	CHECKED	FINAL APPROVAL	
			SRG	2/3/64	PM-865 0	
FINISH & SPEC. NO.			ELEC. DES. APP.	MECH. DES. APP.		

THE CONTENTS OF THIS DRAWING ARE THE EXCLUSIVE PROPERTY OF THE TECHNICAL MATERIEL CORP. ITS UNAUTHORIZED USE FOR REPRODUCTION IN WHOLE OR IN PART IS STRICTLY FORBIDDEN.

REQ. PER UNIT

1

USED ON

MODEL

GPT-200K (AS-123)

ASS'Y. NO.

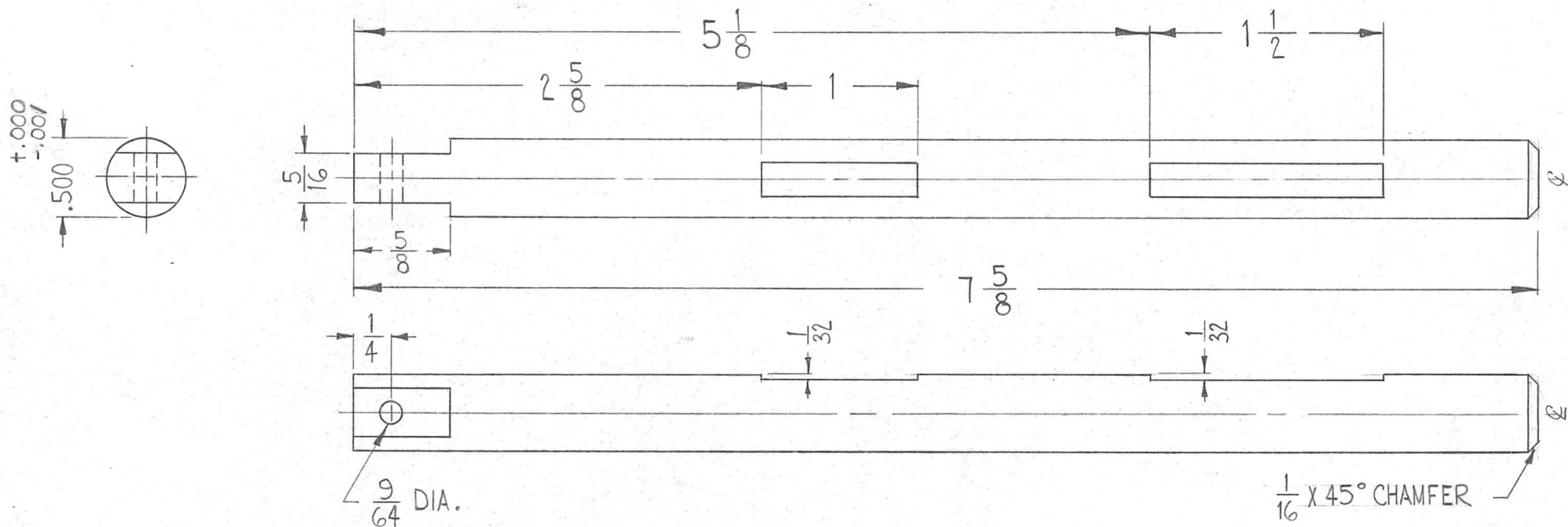
A-2681

DATE

5-24-63

PM-866

0



REQ.	ITEM	PART NO.	F. BUDETTI		DESCRIPTION	SYMBOL
		AS NOTED			THE TECHNICAL MATERIEL CORP. MAMARONECK, NEW YORK	
		STOCK SIZE				
		STAINLESS STEEL			SHAFT, SOLENOID	
		MATERIAL				
		303	W.A. FRANCO	AA	RDC	4-7-64
		TYPE & TEMPER	DRAWN	CHECKED	FINAL APPROVAL	
		S104-PASSIVATE			PM-866 0	
		FINISH & SPEC. NO.	ELEC. DES. APP.	MECH. DES. APP.		

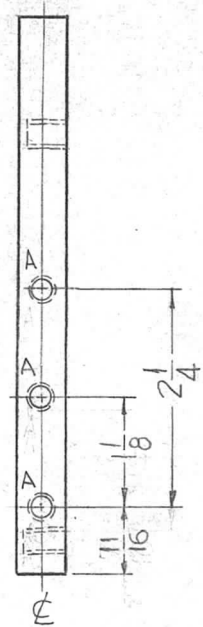
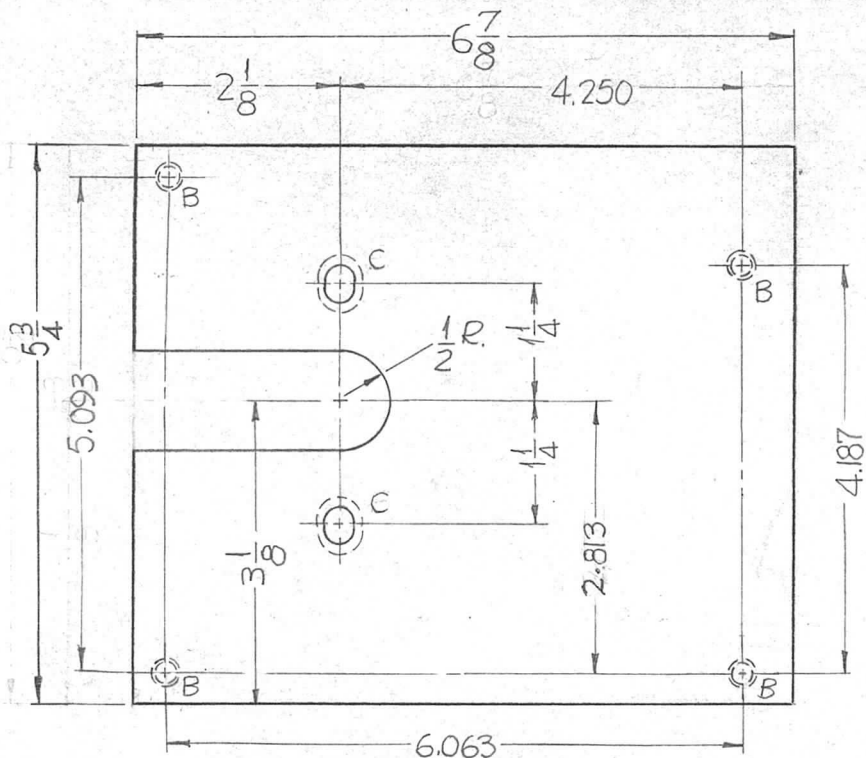
SYMBOL	DESCRIPTION	DATE	CH. NO.	DRAFTS	CHECKER	ENG. APP.
○	ORIGINAL RELEASE FOR PRODUCTION	3-6-64				

DECIMALS	FRACTIONS	CODE
.X ± .05	± 1/64	A
.XX ± .01	ANGLES	
.XXX ± .005	± 0° 30'	

UNLESS OTHERWISE SPECIFIED	SCALE
DIMENSIONS ARE IN INCHES AND INCLUDE CHEMICALLY APPLIED OR PLATED FINISHES	FULL (DO NOT SCALE)

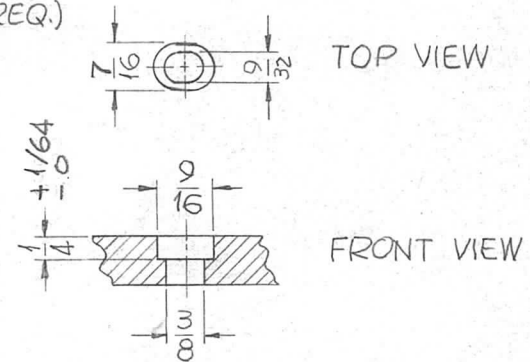
THE CONTENTS OF THIS DRAWING ARE THE EXCLUSIVE PROPERTY OF THE TECHNICAL MATERIEL CORP. ITS UNAUTHORIZED USE FOR REPRODUCTION IN WHOLE OR IN PART IS STRICTLY FORBIDDEN.

REQ. PER UNIT 1	USED ON		DATE 4-17-63	PM-869	0
	MODEL GPT-200K (AX-395)	ASS'Y. NO. A-3234			

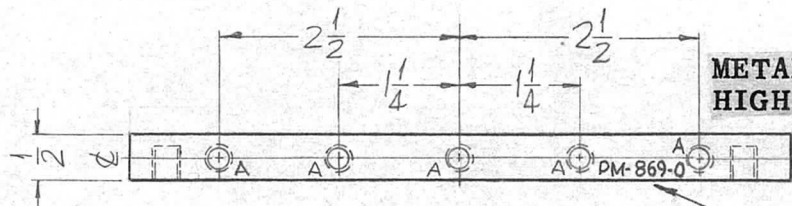


HOLES:

A~DRILL & TAP FOR 1/4-20 X 9/16 DEEP (8 REQ.)
 B~DRILL & TAP FOR 1/4-20 X 3/8 DEEP (4 REQ.)



C-DETAIL (2 REQ.)



METAL STAMP TMC PART NO. 1/8 HIGH GOTHIC

REQ.	ITEM	PART NO.	F. BUDETTI DESCRIPTION			SYMBOL
		1/2 THICK STOCK SIZE	THE TECHNICAL MATERIEL CORP. MAMARONECK, NEW YORK			
		ALUMINUM	PLATE, SIDE, RIGHT (4)			
		MATERIAL				
		2024-T4	SRG	pcr's aa	Roc	3-30-64
		TYPE & TEMPER	HEAT TREAT. SPEC.	DRAWN	CHECKED	FINAL APPROVAL
		S-245 SILVER PLATE, BRIGHT		2B 2B	BC-	PM-869 0
		FINISH & SPEC. NO.	ELEC. DES. APP.	MECH. DES. APP.		

UNLESS OTHERWISE SPECIFIED DIMENSIONS ARE IN INCHES AND INCLUDE CHEMICALLY APPLIED OR PLATED FINISHES

DECIMALS
 .X ± .05
 .XX ± .01
 .XXX ± .005

FRACTIONS
 ± 1/64
 ANGLES
 ± 0° 30'

TOLERANCES

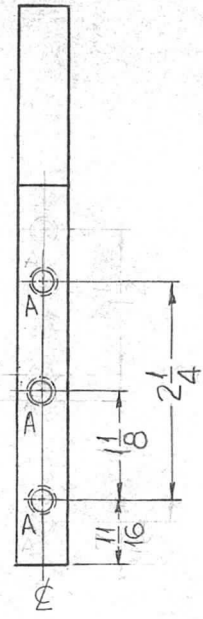
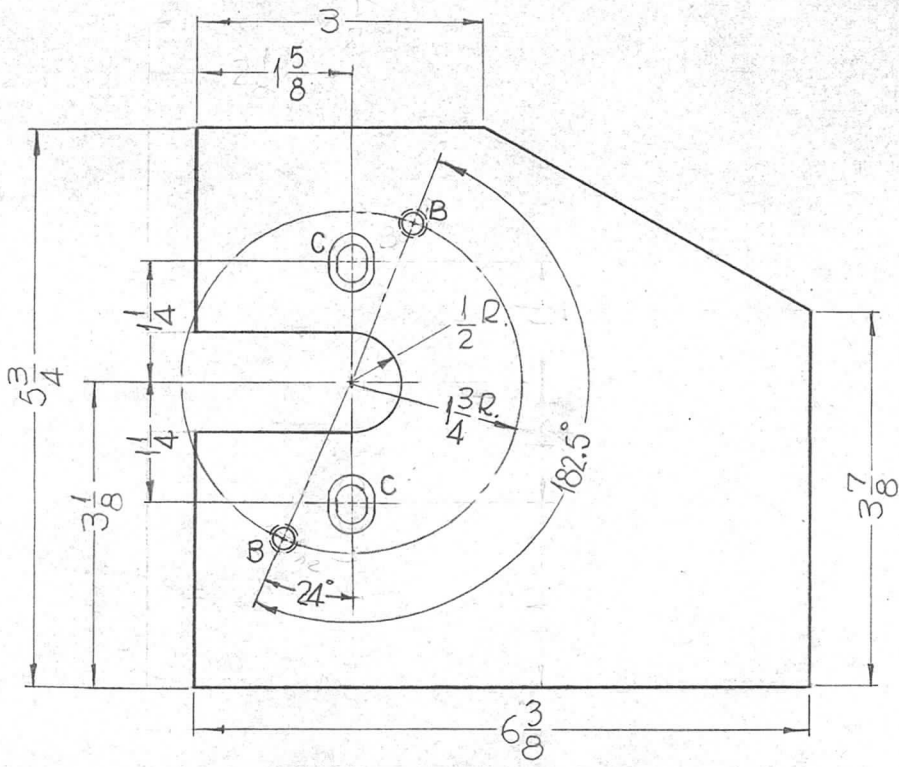
SCALE: $\frac{1}{16}$

CODE: A

THE CONTENTS OF THIS DRAWING ARE THE EXCLUSIVE PROPERTY OF THE TECHNICAL MATERIEL CORP. ITS UNAUTHORIZED USE FOR REPRODUCTION IN WHOLE OR IN PART IS STRICTLY FORBIDDEN.

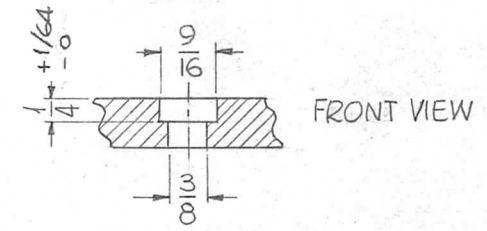
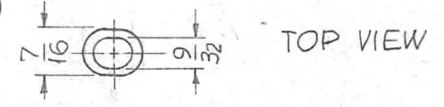
REQ. PER UNIT	USED ON	
	MODEL	ASS'Y. NO.
1	GPT-200K (AX-395)	A-3234
		DATE
		4-17-63

PM-870 0

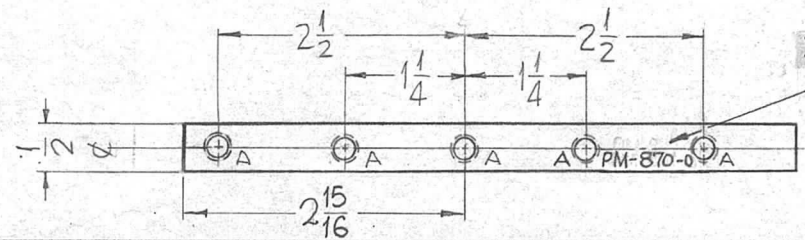


HOLE:

A ~ DRILL & TAP FOR 1/4-20 X 9/16 DEEP. (8 REQ.)
 B ~ DRILL & TAP FOR 1/4-20 X 3/8 DEEP. (2 REQ.)



C-DETAIL (2REQ.)



METAL STAMP TMC PART NO. 1/8 HIGH GOTHIC.

							REQ. ITEM	PART NO.	F. BUDETTI	DESCRIPTION	SYMBOL	
								1/2 THICK		THE TECHNICAL MATERIEL CORP. MAMARONECK, NEW YORK.		
								STOCK SIZE				
								ALUMINUM		PLATE, SIDE, LEFT (4)		
								MATERIAL				
								2024-T4	SRG	aa 906	3-30-64	
								TYPE & TEMPER	HEAT TREAT. SPEC.	DRAWN	CHECKED	FINAL APPROVAL
								S-245 SILVER PLATE, BRIGHT		DB RB	BB	PM-870 0
								FINISH & SPEC. NO.	ELEC. DES. APP.	MECH. DES. APP.		

THE CONTENTS OF THIS DRAWING ARE THE EXCLUSIVE PROPERTY OF THE TECHNICAL MATERIEL CORP. ITS UNAUTHORIZED USE FOR REPRODUCTION IN WHOLE OR IN PART IS STRICTLY FORBIDDEN.

REQ. PER UNIT

1

MODEL
GPT-200K (AX-395)

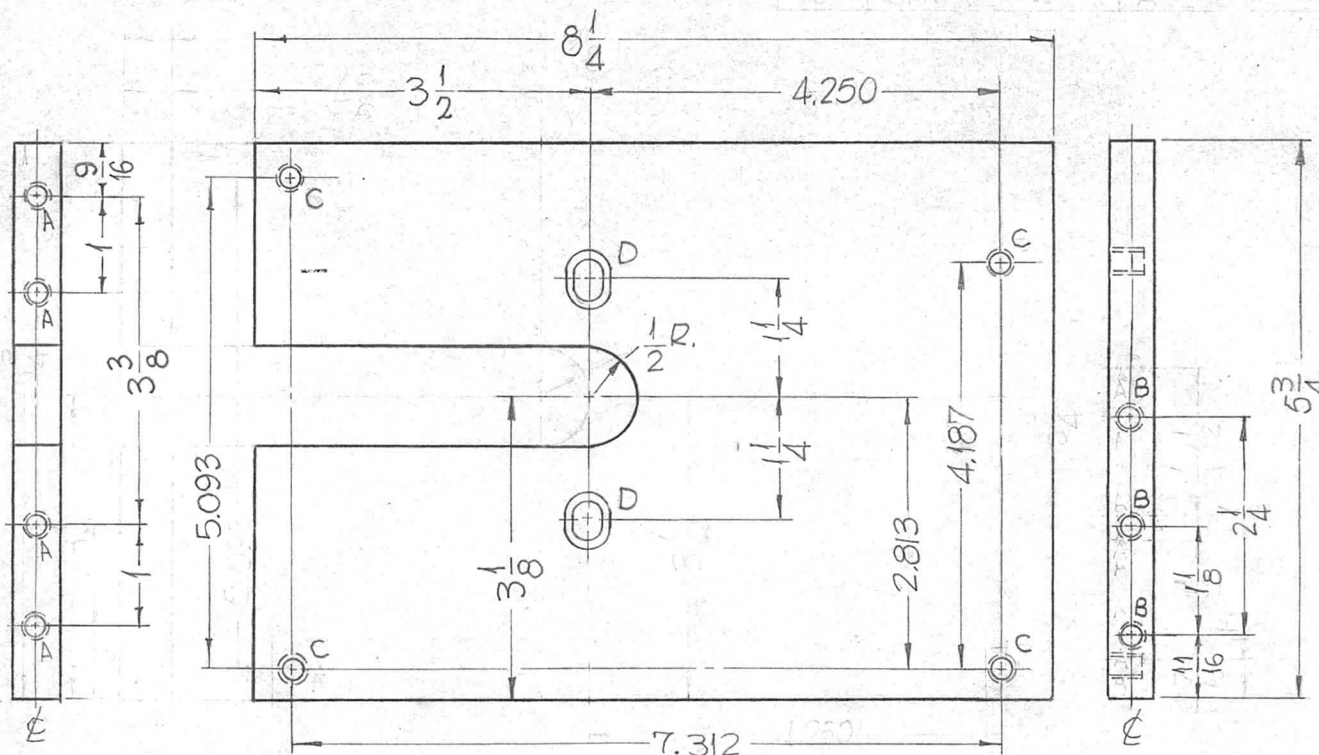
USED ON

ASS'Y. NO.
A-3237

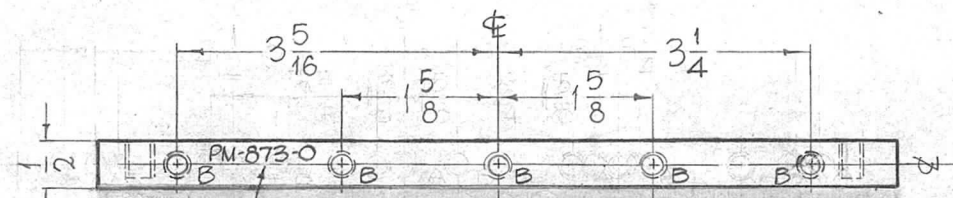
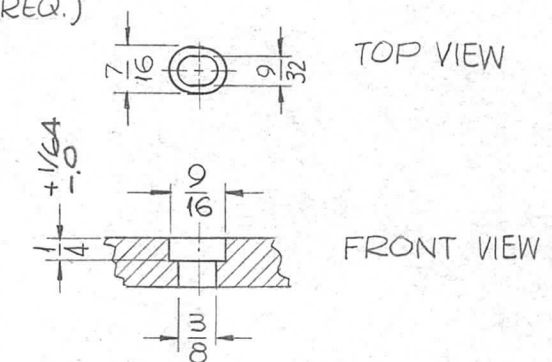
DATE

4-17-63

PM-873 0



HOLES:
A~DRILL & TAP FOR 10-32 X 9/16 DEEP (4REQ.)
B~DRILL & TAP FOR 1/4-20 X 9/16 DEEP (8REQ.)
C~DRILL & TAP FOR 1/4-20 X 3/8 DEEP (4REQ.)



METAL STAMP TMC PART NO. 1/8 HIGH GOTHIC.

REQ.	ITEM	PART NO.	F. BUDETTI	DESCRIPTION	SYMBOL	
		1/2 THICK		THE TECHNICAL MATERIEL CORP.		
		STOCK SIZE		MAMARONECK.		
		ALUMINUM		NEW YORK		
				PLATE, SIDE, LEFT (3)		
0	ORIGINAL RELEASE FOR PRODUCTION	3-3-64				
SYM	DESCRIPTION	DATE	CH. NO.	DRAFTS	CHECKER	ENG. APP.
UNLESS OTHERWISE SPECIFIED DIMENSIONS ARE IN INCHES AND INCLUDE CHEMICALLY APPLIED OR PLATED FINISHES		SCALE				
DECIMALS .X ± .05 .XX ± .01 .XXX ± .005	TOLERANCES	FRACTIONS ± 1/64 ANGLES ± 0° 30'	CODE A			
		2024-T4		SRG	aaqrb	RJC 3/30/64
		TYPE & TEMPER	HEAT TREAT. SPEC.	DRAWN	CHECKED	FINAL APPROVAL
		S-245 SILVER PLATE, BRIGHT		20 AB	BC	PM-873 0
		FINISH & SPEC. NO.		ELEC. DES. APP.	MECH. DES. APP.	

THE CONTENTS OF THIS DRAWING ARE THE EXCLUSIVE PROPERTY OF THE TECHNICAL MATERIEL CORP. ITS UNAUTHORIZED USE FOR REPRODUCTION IN WHOLE OR IN PART IS STRICTLY FORBIDDEN.

REQ. PER UNIT

1

GRT-200K (AX-395)

USED ON

ASS'Y. NO.

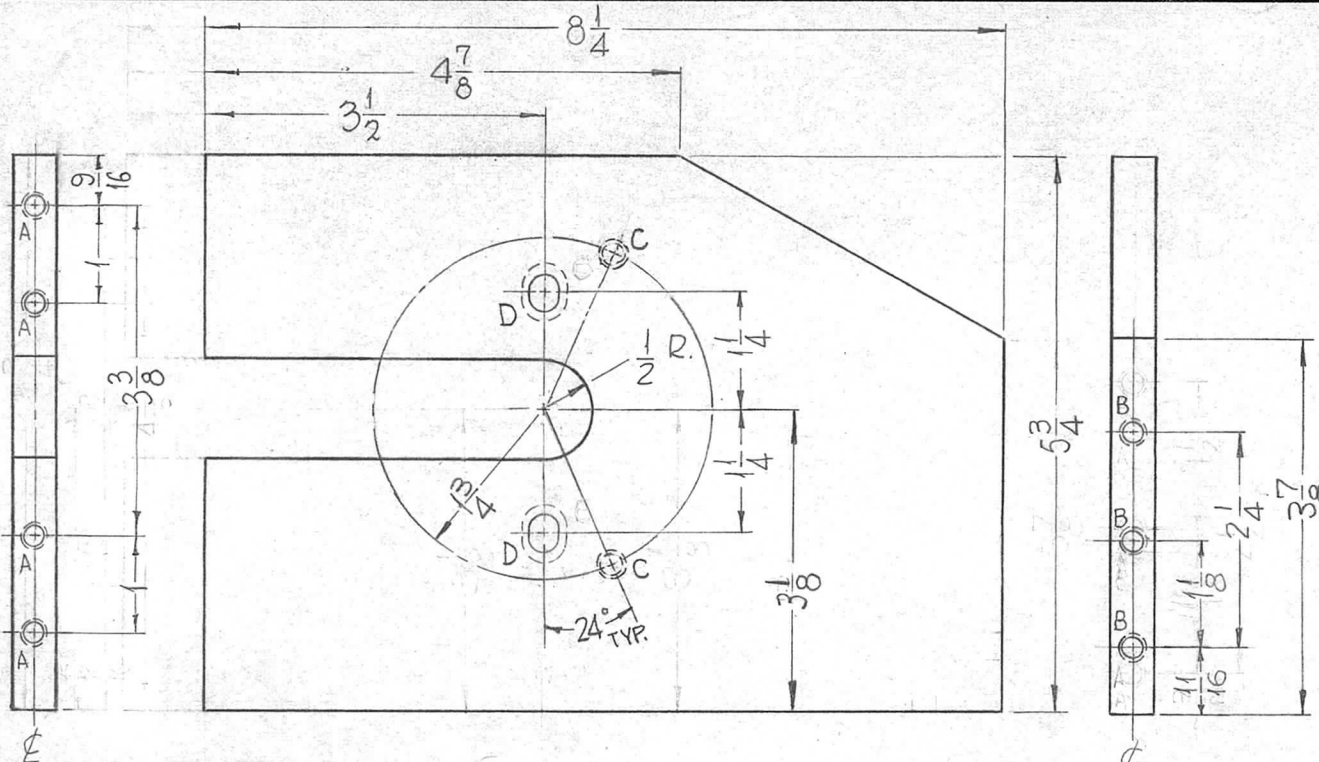
A-3237

DATE

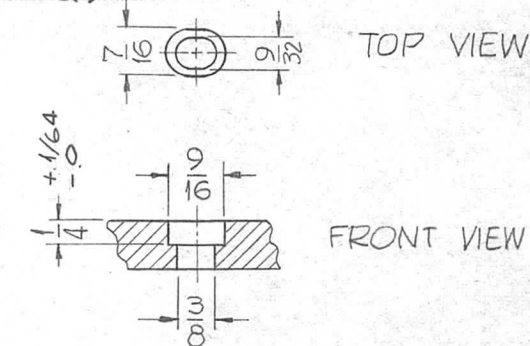
4-17-63

PM-874

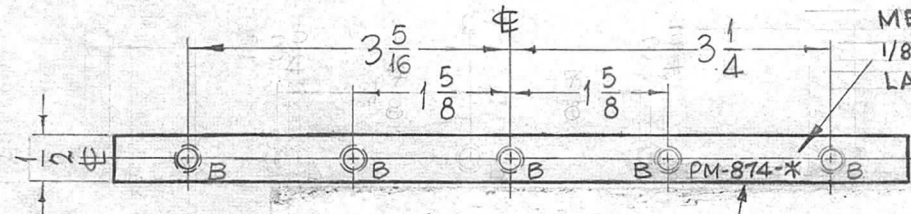
A



HOLES:
 A~ DRILL & TAP FOR 10-32 x 9/16 DEEP. (4REQ.)
 B~ DRILL & TAP FOR 1/4-20 x 9/16 DEEP. (8 REQ.)
 C~ DRILL & TAP FOR 1/4-20 x 3/8 DEEP (2REQ.)



D-DETAIL (2REQ.)



METAL STAMP TMC P/N 1/8 HIGH GOTHIC WITH LATEST REVISION LETTER.

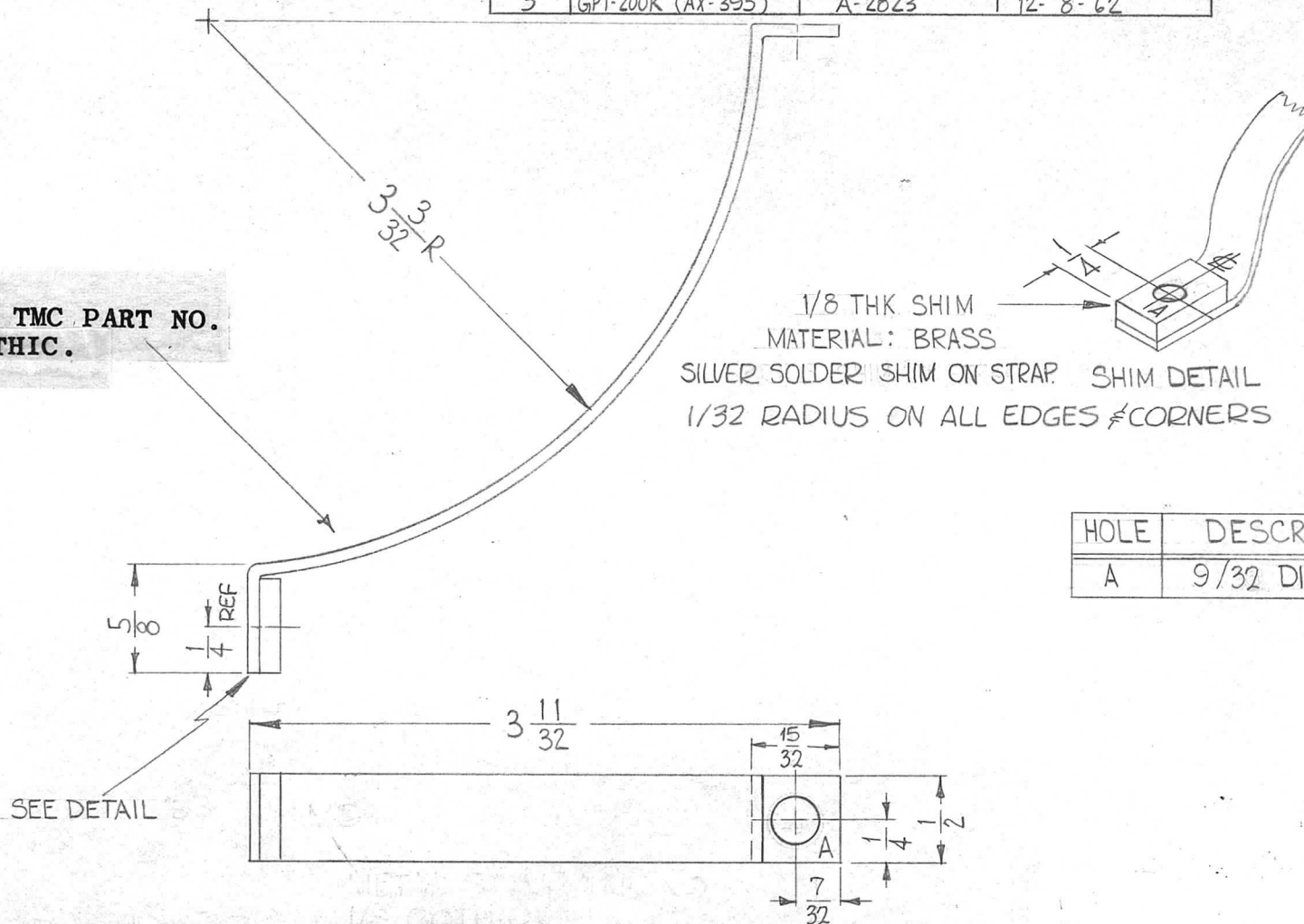
REQ.	ITEM	PART NO.	F. BUDETTI DESCRIPTION				SYMBOL
		1/2 THICK	THE TECHNICAL MATERIEL CORP. MAMARONECK, NEW YORK				A
		STOCK SIZE					
		ALUMINUM	PLATE, SIDE, RIGHT (3)				
		MATERIAL					
		2024-T4	SRG	aaqrb RJC 3-30-64			
		TYPE & TEMPER	HEAT TREAT. SPEC.	DRAWN	CHECKED	FINAL APPROVAL	
		S-245 SILVER PLATE, BRIGHT		RB RB	RB	PM-874 A	
		FINISH & SPEC. NO.	ELEC. DES. APP.	MECH. DES. APP.			

THE CONTENTS OF THIS DRAWING ARE THE EXCLUSIVE PROPERTY OF THE TECHNICAL MATERIEL CORP. ITS UNAUTHORIZED USE FOR REPRODUCTION IN WHOLE OR IN PART IS STRICTLY FORBIDDEN.

REQ. PER UNIT	USED ON		
	MODEL	ASS'Y. NO.	DATE
4	GPT-200K (AX-395)	A-2821	12-8-62
3	GPT-200K (AX-395)	A-2822	12-8-62
3	GPT-200K (AX-395)	A-2823	12-8-62

PM-875 0

METAL STAMP TMC PART NO. 1/8 HIGH GOTHIC.



HOLE	DESCRIPTION	REQ.
A	9/32 DIA.	2

SYM	DESCRIPTION	DATE	CH. NO.	DRAFTS	CHECKER	ENG. APP.	REQ. ITEM	PART NO.	F. BUDETTI	DESCRIPTION	SYMBOL	
								1/16 THK.		THE TECHNICAL MATERIEL CORP. MAMARONECK, NEW YORK	STRAP, CAPACITOR RETAINER	
								STOCK SIZE				
								COPPER				
								MATERIAL				
								SOFT		W.A. FRANCO	3/23/64	
								TYPE & TEMPER	HEAT TREAT. SPEC.	DRAWN	CHECKED	FINAL APPROVAL
								S-245 SILVER PLATE, BRIGHT		W.A. FRANCO	W.A. FRANCO	PM-875 0
								FINISH & SPEC. NO.		ELEC. DES. APP.	MECH. DES. APP.	

UNLESS OTHERWISE SPECIFIED DIMENSIONS ARE IN INCHES AND INCLUDE CHEMICALLY APPLIED OR PLATED FINISHES

DECIMALS
.X ± .05
.XX ± .01
.XXX ± .005

FRACTIONS
± 1/64
ANGLES
± 0° 30'

TOLERANCES

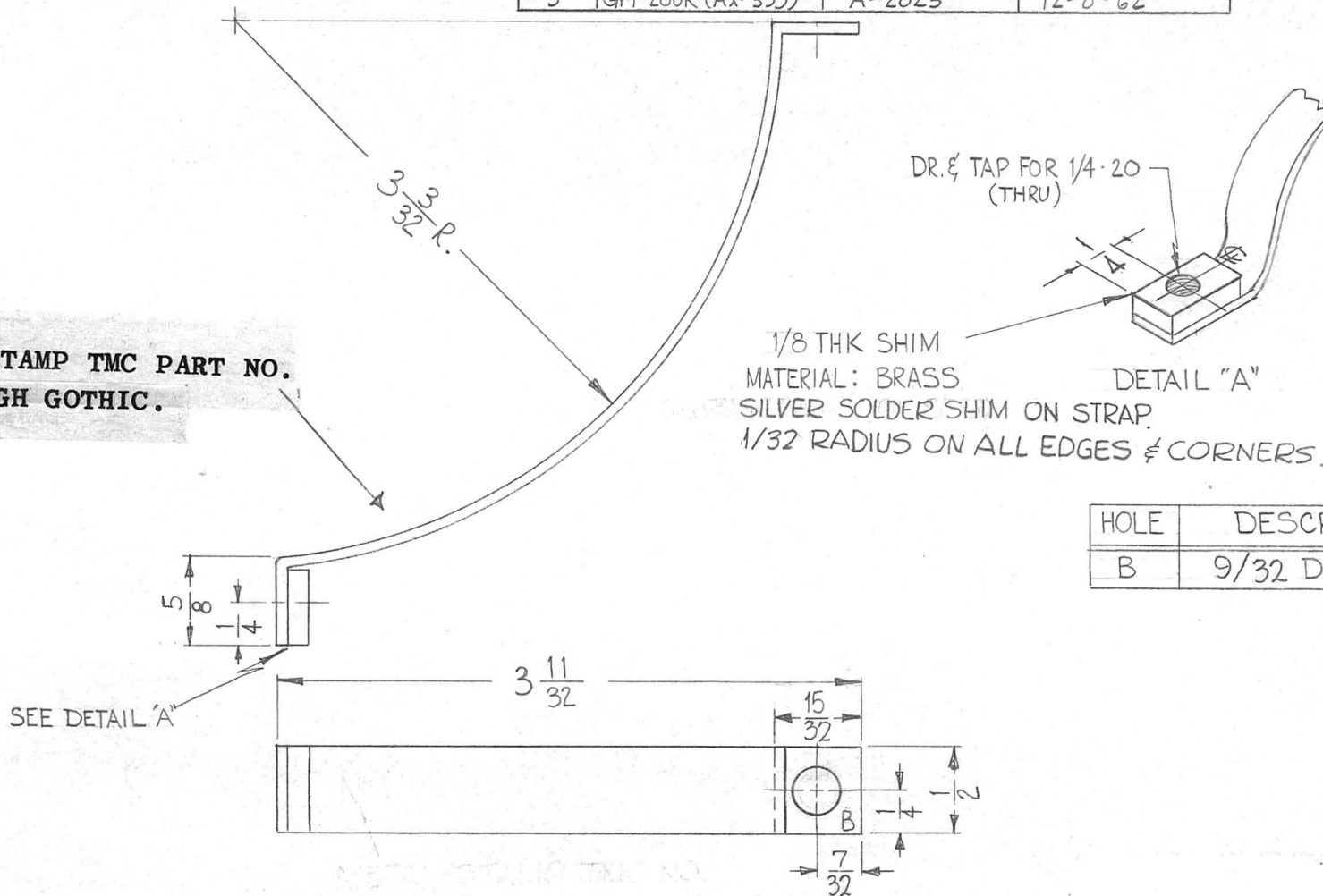
SCALE H

CODE A

THE CONTENTS OF THIS DRAWING ARE THE EXCLUSIVE PROPERTY OF THE TECHNICAL MATERIEL CORP. ITS UNAUTHORIZED USE FOR REPRODUCTION IN WHOLE OR IN PART IS STRICTLY FORBIDDEN.

REQ. PER UNIT	USED ON		
	MODEL	ASS'Y. NO.	DATE
4	GPT-200K (AX-395)	A-2821	12-8-62
3	GPT-200K (AX-395)	A-2822	12-8-62
3	GPT-200K (AX-395)	A-2823	12-8-62

PM-876 0



METAL STAMP TMC PART NO.
1/8 HIGH GOTHIC.

HOLE	DESCRIPTION	REQ.
B	9/32 DIA.	1

REQ.	ITEM	PART NO.	F. BUDETTI	DESCRIPTION	SYMBOL	
		1/16 THK. STOCK SIZE	THE TECHNICAL MATERIEL CORP. MAMARONECK, NEW YORK			
		COPPER	STRAP, CAPACITOR RETAINER			
		MATERIAL				
		SOFT	W.A. FRANCO	aa	RJC 3/22/64	
		TYPE & TEMPER	HEAT TREAT. SPEC.	DRAWN	CHECKED	FINAL APPROVAL
		S-245 SILVER PLATE, BRIGHT		RB RB	BB	PM-876 10
		FINISH & SPEC. NO.	ELEC. DES. APP.	MECH. DES. APP.		

DECIMALS	TOLERANCES	FRACTIONS	CODE
.X ± .05		± 1/64	A
.XX ± .01		ANGLES	
.XXX ± .005		± 0° 30'	

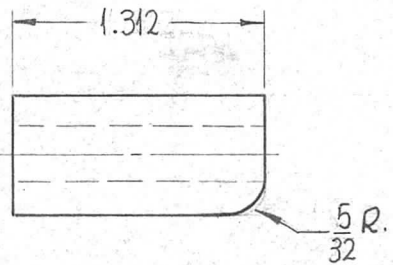
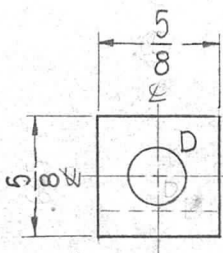
UNLESS OTHERWISE SPECIFIED	SCALE
DIMENSIONS ARE IN INCHES AND INCLUDE CHEMICALLY APPLIED OR PLATED FINISHES	H

THE CONTENTS OF THIS DRAWING ARE THE EXCLUSIVE PROPERTY OF THE TECHNICAL MATERIEL CORP. ITS UNAUTHORIZED USE FOR REPRODUCTION IN WHOLE OR IN PART IS STRICTLY FORBIDDEN.

REQ. PER UNIT	USED ON		
	MODEL	ASS'Y. NO.	DATE
2	GPT-200K (AX-395)	A-3236	6-6-63

PM-878 0

HOLE:
5/16 DIA (1REQ.)



TMC NO.	A	B	C	D
EW-500-1-53	5/16	1.312	5/16	5/16

REQ.	ITEM	PART NO.	F. BUDETTI	DESCRIPTION	SYMBOL
		5/8 SQ		THE TECHNICAL MATERIEL CORP. MAMARONECK, NEW YORK	
		STOCK SIZE		STANDOFF	
		ALUMINUM			
		MATERIAL			
		2024-T4	SRG	aa ^{90%} RJC 3-30-64	
		TYPE & TEMPER	HEAT TREAT. SPEC.	DRAWN	CHECKED
		S404-IRIDITE, 14-2 AL COAT		BB RB	PM-878 0
		FINISH & SPEC. NO.	ELEC. DES. APP.	MECH. DES. APP.	

UNLESS OTHERWISE SPECIFIED DIMENSIONS ARE IN INCHES AND INCLUDE CHEMICALLY APPLIED OR PLATED FINISHES

DECIMALS
.X ± .05
.XX ± .01
.XXX ± .005

FRACTIONS
± 1/64
ANGLES
± 0° 30'

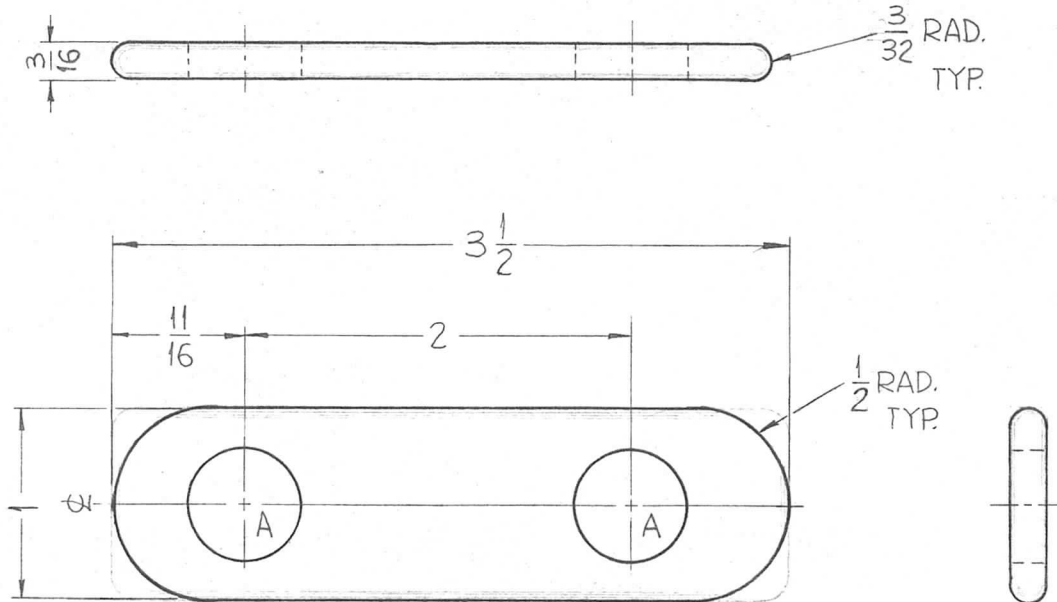
TOLERANCES

CODE
A

THE CONTENTS OF THIS DRAWING ARE THE EXCLUSIVE PROPERTY OF THE TECHNICAL MATERIEL CORP. ITS UNAUTHORIZED USE OR REPRODUCTION IN WHOLE OR IN PART IS STRICTLY FORBIDDEN.

REQ. PER UNIT	USED ON		
	MODEL	ASS'Y. NO.	DATE
6	GPT-200K	AP-109	11-2-62
6	GPT-200K	AP-111	11-2-62

PM-886 0



HOLE	DESCRIPTION	REQ.
A	9/16 DIA.	2

REQ.	ITEM	PART NO.	F. BUDETTI DESCRIPTION			SYMBOL
		3/16 THICK	THE TECHNICAL MATERIEL CORP.			
		STOCK SIZE	MAMARONECK, NEW YORK			
0	ORIGINAL RELEASE	5.16.64	PLATE, CONNECTOR TERMINAL			
		COPPER				
		MATERIAL				
SYM	DESCRIPTION	DATE	CH. NO.	DRAFTS	CHECKER	ENG. APP.
	UNLESS OTHERWISE SPECIFIED:					
	DIMENSIONS ARE IN INCHES	SCALE:				
	TOLERANCES ON	MAXIMUM ALLOWABLE TOLERANCES HAVE BEEN DETERMINED AND ANY DEVIATIONS WILL BE CAUSE FOR REJECTION.				
	FRAC. ± 1/64 DEC. ± .005 ANGLES ± 1/2°	REMOVE ALL BURRS AND SHARP EDGES				
		TYPE & TEMPER	HEATTREAT. SPEC.	DRAWN	CHECKED	FINAL APPROVAL
		NO FINISH		SRG	aa	RR
		FINISH & SPEC. NO.		20		PM-886 0
				ELEC. DES. APP.	MECH. DES. APP.	

THE CONTENTS OF THIS DRAWING ARE THE EXCLUSIVE PROPERTY OF THE TECHNICAL MATERIEL CORP. ITS UNAUTHORIZED USE FOR REPRODUCTION IN WHOLE OR IN PART IS STRICTLY FORBIDDEN.

REQ. PER UNIT

USED ON

MODEL

ASS'Y. NO.

DATE

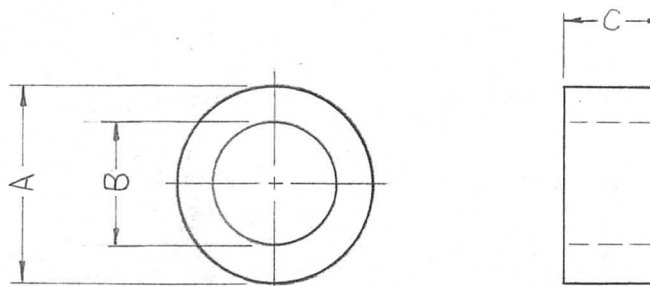
GPT-200K

A-2706

3-18-63

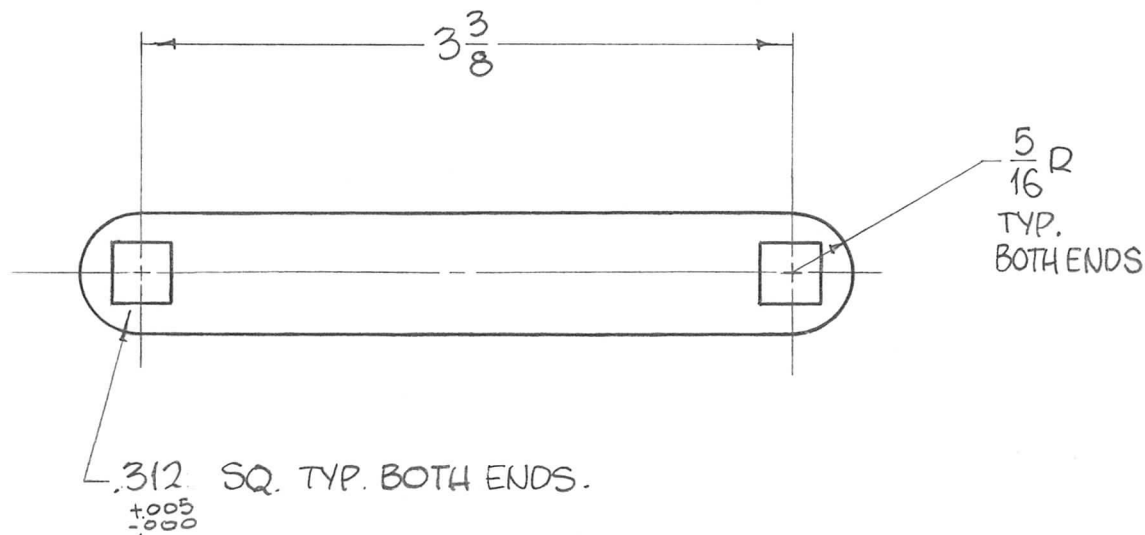
PM 892 0

TMC PART NO.	A	B	C
PM-892-1	1	.630 ±.003	.500 ±.003
PM-892-2	1	.630 ±.003	.156 ±.003
PM-892-3	.625	17/32	2.671



REQ.	ITEM	PART NO.	F. BUDETTI DESCRIPTION			SYMBOL
0	ORIG. RELEASE FOR PROD	5-27-64	SRG	THE TECHNICAL MATERIEL CORP. MAMARONECK, NEW YORK		
X2	PM-892-3 ADDED	3-20-64		SPACER		
X1	ON PM-892-1 "C" DIM WAS 5/8 " " " " " " " " 3/32	1-15-64		HOT ROLLED STEEL		
SYM	DESCRIPTION	DATE	CH. NO.	DRAFTS	CHECKER	ENG. APP.
UNLESS OTHERWISE SPECIFIED DIMENSIONS ARE IN INCHES AND INCLUDE CHEMICALLY APPLIED OR PLATED FINISHES			SCALE			MATERIAL
			#			1020
DECIMALS .X ± .05 .XX ± .01 .XXX ± .005			FRACTIONS ± 1/64 ANGLES ± 0° 30'			TOLERANCES
CODE A			TYPE & TEMPER			HEAT TREAT. SPEC.
			CHROME PLATE			
			FINISH & SPEC. NO.			ELEC. DES. APP.
						MECH. DES. APP.
						PM 892 0

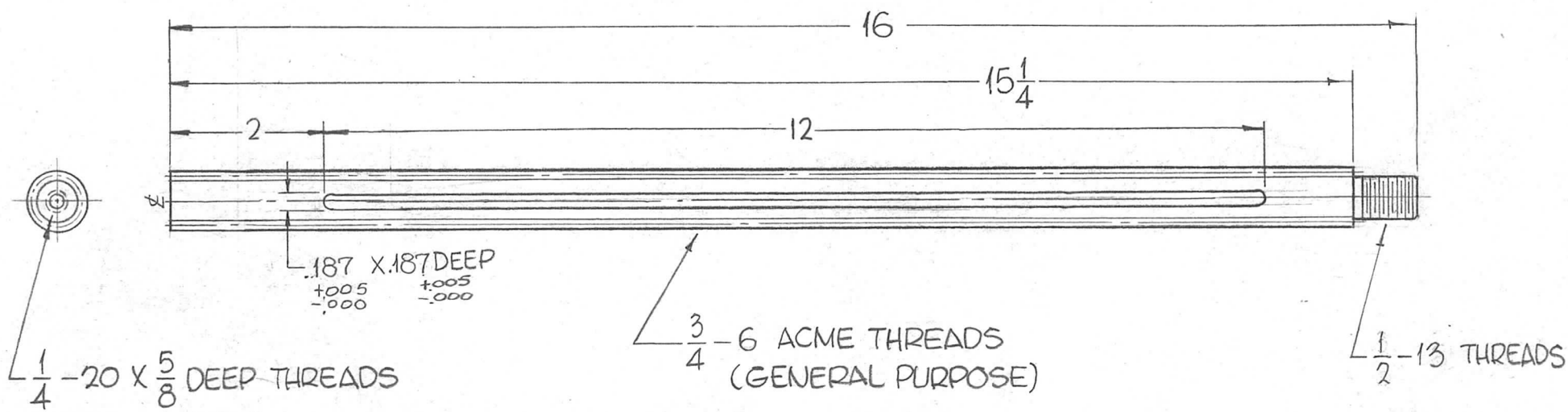
REQ. PER UNIT	USED ON			PM 893 0
	MODEL	ASS'Y. NO.	DATE	
1	GPT-200K	A-2706	1-15-64	



REQ.	ITEM	PART NO.	F. BUDETTI DESCRIPTION				SYMBOL					
			3/16 THICK				THE TECHNICAL MATERIEL CORP. MAMARONECK, NEW YORK					
			STOCK SIZE									
0	ORIG. RELEASE FOR PROD.	5-27-64		SRG			ARM, HAND CRANK					
X1	REVISED & REDRAWN	1-16-64										
SYM	DESCRIPTION	DATE	CH. NO.	DRAFTS	CHECKER	ENG. APP.	MATERIAL					
UNLESS OTHERWISE SPECIFIED DIMENSIONS ARE IN INCHES AND INCLUDE CHEMICALLY APPLIED OR PLATED FINISHES		SCALE	1" = 1"				1020	John C Biele				
DECIMALS .X ± .05 .XX ± .01 .XXX ± .005		TOLERANCES		FRACTIONS ± 1/64 ANGLES ± 0° 30'		CODE	A	TYPE & TEMPER	HEAT TREAT. SPEC.	DRAWN	CHECKED	FINAL APPROVAL
								CHROME PLATE				
								FINISH & SPEC. NO.	ELEC. DES. APP.	MECH. DES. APP.	PM 893 0	

THE CONTENTS OF THIS DRAWING ARE THE EXCLUSIVE PROPERTY OF THE TECHNICAL MATERIEL CORP. ITS UNAUTHORIZED USE FOR REPRODUCTION IN WHOLE OR IN PART IS STRICTLY FORBIDDEN.

REQ. PER UNIT	USED ON			PM-895	0
	MODEL	ASS'Y. NO.	DATE		
1	GPT-200K	A-2706	3-19-63		



REQ.	ITEM	PART NO.	F. BUDETTI			DESCRIPTION	SYMBOL	
0	ORIG. RELEASE FOR PROD.	5-27-64	SRG			AS NOTED	THE TECHNICAL MATERIEL CORP. MAMARONECK, NEW YORK	
X2	SLOT ADDED					STAINLESS STEEL	ROD, THREADED	
X1	16" 1/2-13 X 3/4 LONG, 3/4-6 THREADS 1/4-20 X 5/8 DP ADDED.	1-15-64				303		
SYM	DESCRIPTION	DATE	CH. NO.	DRAFTS	CHECKER	ENG. APP.		
UNLESS OTHERWISE SPECIFIED DIMENSIONS ARE IN INCHES AND INCLUDE CHEMICALLY APPLIED OR PLATED FINISHES			SCALE			1/2" = 1"		
DECIMALS .X ± .05 .XX ± .01 .XXX ± .005	TOLERANCES	FRACTIONS ± 1/64 ANGLES ± 0° 30'	CODE					
			A					
			TYPE & TEMPER		HEAT TREAT. SPEC.	DRAWN	CHECKED	FINAL APPROVAL
			CLEAR PASSIVATE			SRG	BB	PM-895 0
			FINISH & SPEC. NO.		ELEC. DES. APP.	MECH. DES. APP.		

THE CONTENTS OF THIS DRAWING ARE THE EXCLUSIVE PROPERTY OF THE TECHNICAL MATERIEL CORP. ITS UNAUTHORIZED USE FOR REPRODUCTION IN WHOLE OR IN PART IS STRICTLY FORBIDDEN.

REQ. PER UNIT

USED ON

MODEL

ASS'Y. NO.

DATE

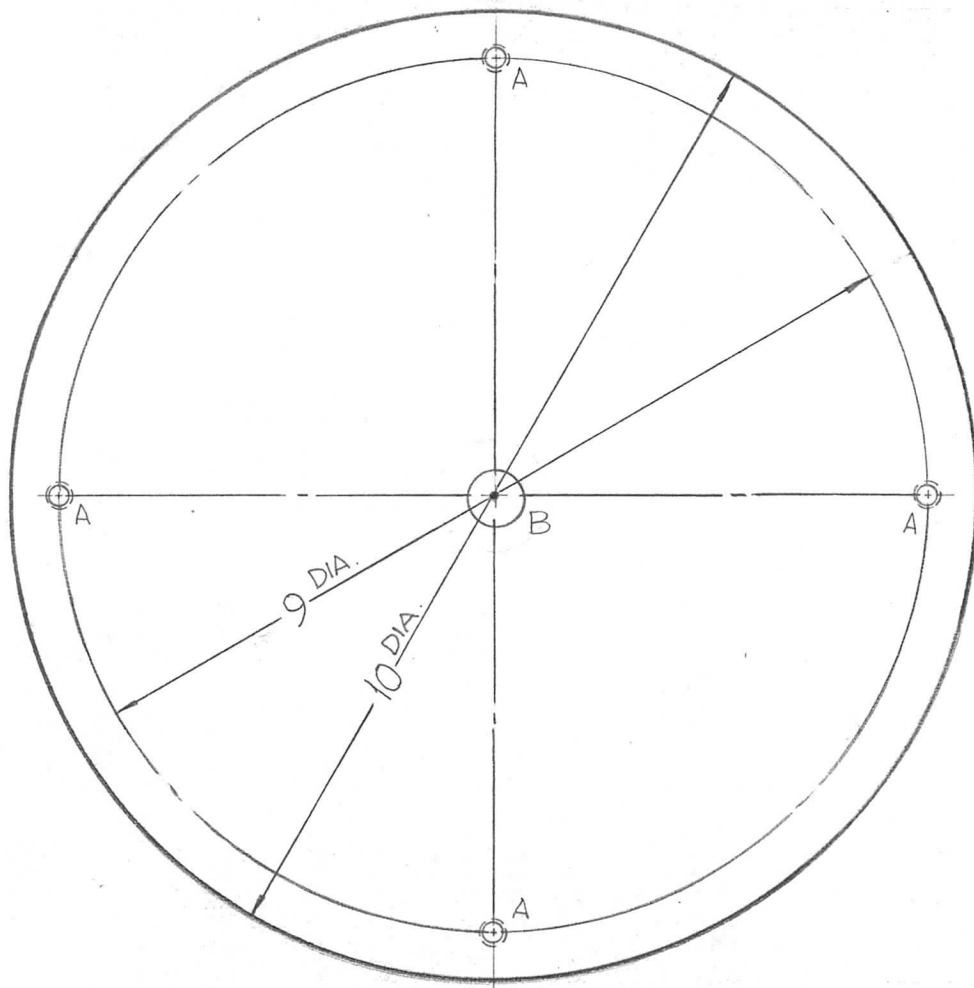
1

GPT-200K

A-2706

3-18-63

PM 896 0



HOLES:

A ~ 1/4-20 TAP 90° APART
(4 REQ.)

B ~ 9/16 DIA. (1 REQ)

REQ.	ITEM	PART NO.	FBUDETTI		DESCRIPTION	SYMBOL
		3/16 THICK	THE TECHNICAL MATERIEL CORP.			
		STOCK SIZE	MAMARONECK.			
		HOT ROLLED STEEL	NEW YORK			
0	ORIG. RELEASE FOR PROD.	5-27-64	SRG	PLATE, CHAIN MTG.		
SYM	DESCRIPTION	DATE	CH. NO.	DRAFTS	CHECKER	ENG. APP.
	UNLESS OTHERWISE SPECIFIED DIMENSIONS ARE IN INCHES AND INCLUDE CHEMICALLY APPLIED OR PLATED FINISHES	SCALE	1/2" = 1"			
DECIMALS	TOLERANCES	FRACTIONS	CODE			
.X ± .05		± 1/64				
.XX ± .01		ANGLES				
.XXX ± .005		± 0° 30'				
		1020	SRG			
		CADMIUM PLATE				
		FINISH & SPEC. NO.	ELEC. DES. APP.	MECH. DES. APP.	PM 896 0	

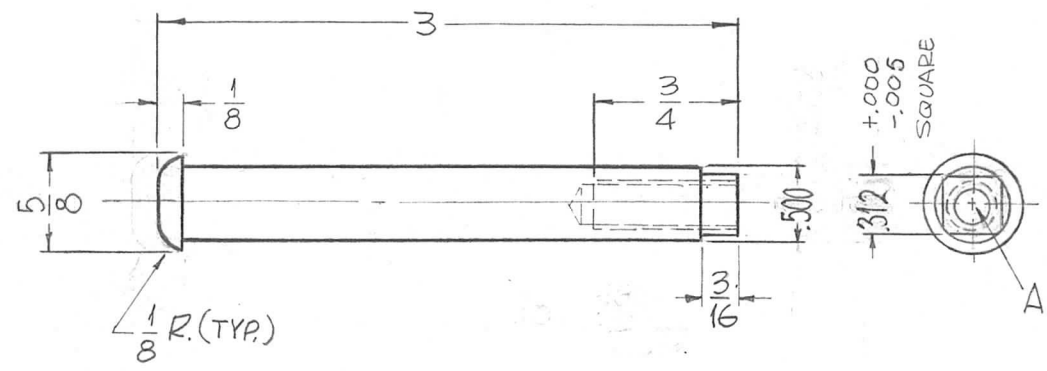
THE CONTENTS OF THIS DRAWING ARE THE EXCLUSIVE PROPERTY OF THE TECHNICAL MATERIEL CORP. ITS UNAUTHORIZED USE FOR REPRODUCTION IN WHOLE OR IN PART IS STRICTLY FORBIDDEN.

REQ. PER UNIT	USED ON		
	MODEL	ASS'Y. NO.	DATE
1	GPT-200K	A-2706	3-19-63

PM 897 0

HOLE:

A ~ 1/4-20 TAP (1REQ.)

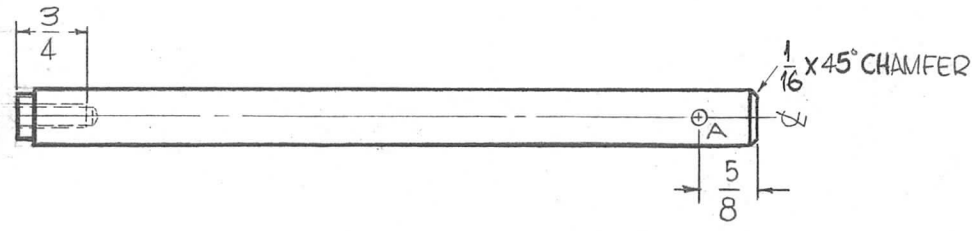


REQ.	ITEM	PART NO.	F. BUDETTI DESCRIPTION				SYMBOL	
		1/2" THICK	THE TECHNICAL MATERIEL CORP.					
		STOCK SIZE	MAMARONECK, NEW YORK					
0	ORIG. RELEASE FOR PROD.	5-27-64	SRG	SHAFT, HANDLE SUPPORT				
XI	5/8 DIM WAS 1/2, .500 WAS 3/8 3/12 ^{+0.00} WAS 5/16 ^{+0.00}	1-15-64		HOT ROLLED STEEL				
SYM	DESCRIPTION	DATE	CH. NO.	DRAFTS	CHECKER	ENG. APP.	MATERIAL	
	UNLESS OTHERWISE SPECIFIED DIMENSIONS ARE IN INCHES AND INCLUDE CHEMICALLY APPLIED OR PLATED FINISHES	SCALE	1"=1"				1020	SRG
	DECIMALS .X ± .05 .XX ± .01 .XXX ± .005	FRACTIONS ± 1/64 ANGLES ± 0° 30'	CODE				CHROME PLATE	
	TOLERANCES							
							FINISH & SPEC. NO.	
							ELEC. DES. APP.	
							MECH. DES. APP.	
							FINAL APPROVAL	
							PM 897 0	

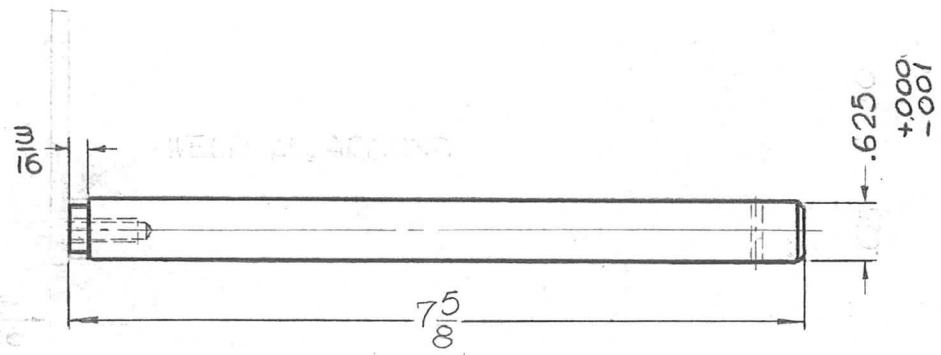
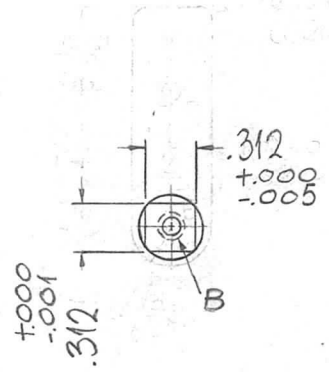
THE CONTENTS OF THIS DRAWING ARE THE EXCLUSIVE PROPERTY OF THE TECHNICAL MATERIEL CORP. ITS UNAUTHORIZED USE FOR REPRODUCTION IN WHOLE OR IN PART IS STRICTLY FORBIDDEN.

REQ. PER UNIT	USED ON		
	MODEL	ASS'Y. NO.	DATE
1	GPT-200K	A-2706	3-18-63

PM-899 0



HOLE:
* A ~ .125 $\begin{smallmatrix} +.004 \\ -.000 \end{smallmatrix}$ (1REQ.)
B ~ 1/4-20 TAP (1REQ.)



* PIN UPON ASSEMBLY.

REQ.	ITEM	PART NO.	F. BUDETTI	DESCRIPTION	SYMBOL						
0	ORIG RELEASE FOR PROD.	5-27-64	SRG	AS NOTED	THE TECHNICAL MATERIEL CORP. MAMARONECK, NEW YORK						
X2	5/8 WAS 1/2			STOCK SIZE							
X1	.3125 $\begin{smallmatrix} +.000 \\ -.001 \end{smallmatrix}$ SQ WAS 1/2 SQ $\begin{smallmatrix} +.000 \\ -.0003 \end{smallmatrix}$ 1/16 X 45° CHAMFER WAS 1/16 X 45° BRANCH	1-15-64		STAINLESS STEEL	SHAFT, GEAR MTG.						
SYM	DESCRIPTION	DATE	CH. NO.	DRAFTS	CHECKER	ENG. APP.	MATERIAL				
UNLESS OTHERWISE SPECIFIED DIMENSIONS ARE IN INCHES AND INCLUDE CHEMICALLY APPLIED OR PLATED FINISHES		SCALE		1/2" = 1"			303	SRG	SRG	RAC	
DECIMALS .X ± .05 .XX ± .01 .XXX ± .005		FRACTIONS ± 1/64 ANGLES ± 0° 30'		TOLERANCES			TYPE & TEMPER	HEAT TREAT. SPEC.	DRAWN	CHECKED	FINAL APPROVAL
		CODE			CLEAR PASSIVATE						
					FINISH & SPEC. NO.			ELEC. DES. APP.	MECH. DES. APP.	PM-899 0	