

THE CONTENTS OF THIS DRAWING ARE THE EXCLUSIVE PROPERTY OF THE TECHNICAL MATERIEL CORP. ITS UNAUTHORIZED USE FOR REPRODUCTION IN WHOLE OR IN PART IS STRICTLY FORBIDDEN.

REQ. PER UNIT

USED ON

MODEL

ASS'Y. NO.

DATE

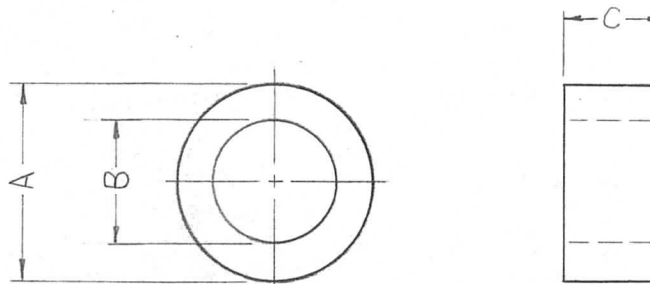
GPT-200K

A-2706

3-18-63

PM 892 0

TMC PART NO.	A	B	C
PM-892-1	1	.630 ±.003	.500 ±.003
PM-892-2	1	.630 ±.003	.156 ±.003
PM-892-3	.625	17/32	2.671



REQ.	ITEM	PART NO.	F. BÜDETTI DESCRIPTION				SYMBOL	
0	ORIG. RELEASE FOR PROD	5-27-64	SRG	THE TECHNICAL MATERIEL CORP. MAMARONECK, NEW YORK				
X2	PM-892-3 ADDED	3-20-64		STOCK SIZE				
X1	ON PM-892-1 "C" DIM WAS 5/8 " " " " " " " " 3/32	1-15-64		HOT ROLLED STEEL				SPACER
SYM	DESCRIPTION	DATE	CH. NO.	DRAFTS	CHECKER	ENG. APP.	MATERIAL	
UNLESS OTHERWISE SPECIFIED DIMENSIONS ARE IN INCHES AND INCLUDE CHEMICALLY APPLIED OR PLATED FINISHES			SCALE #				1020	SRG
DECIMALS .X ± .05 .XX ± .01 .XXX ± .005			TOLERANCES				TYPE & TEMPER	HEAT TREAT. SPEC.
FRACTIONS ± 1/64 ANGLES ± 0° 30'			CODE A				CHROME PLATE	
							FINISH & SPEC. NO.	ELEC. DES. APP. MECH. DES. APP.
								PM 892 0