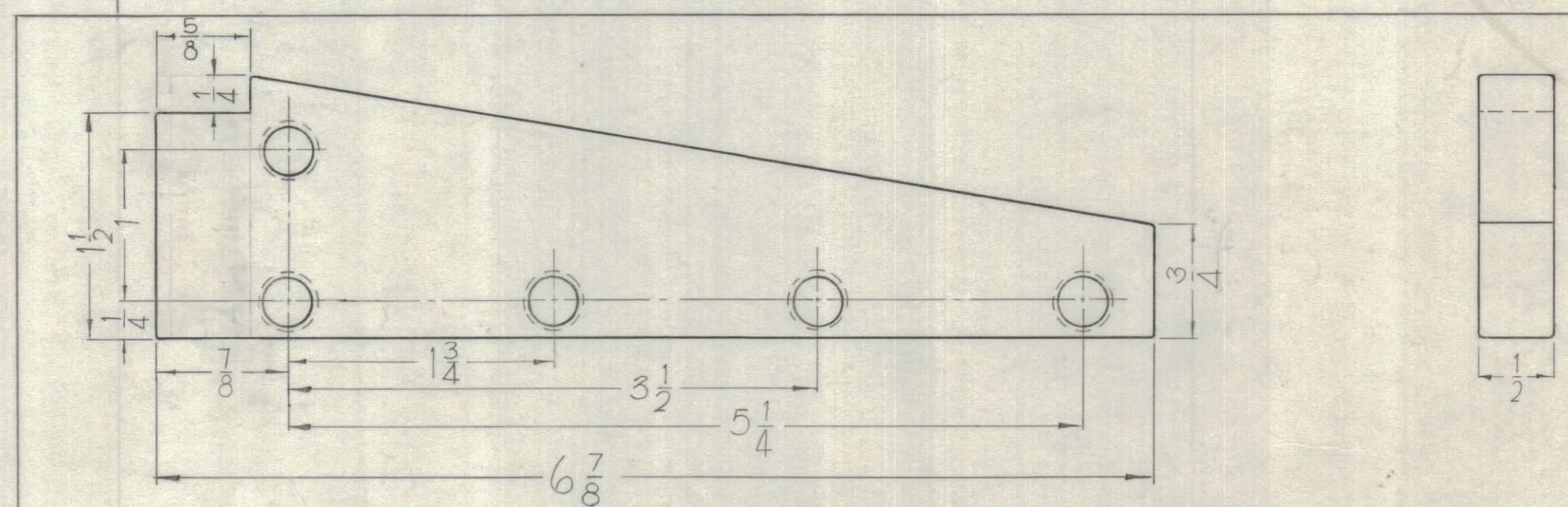
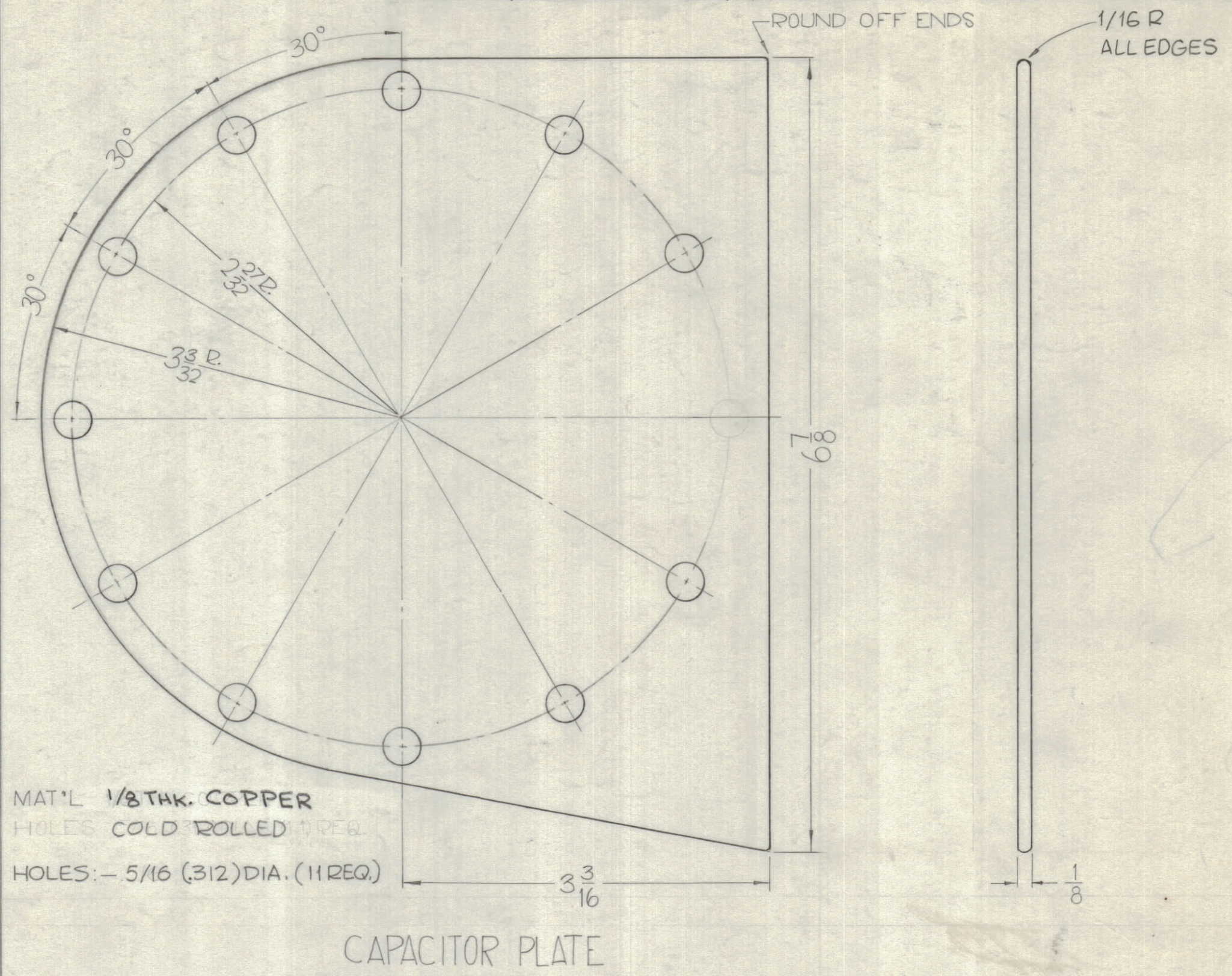
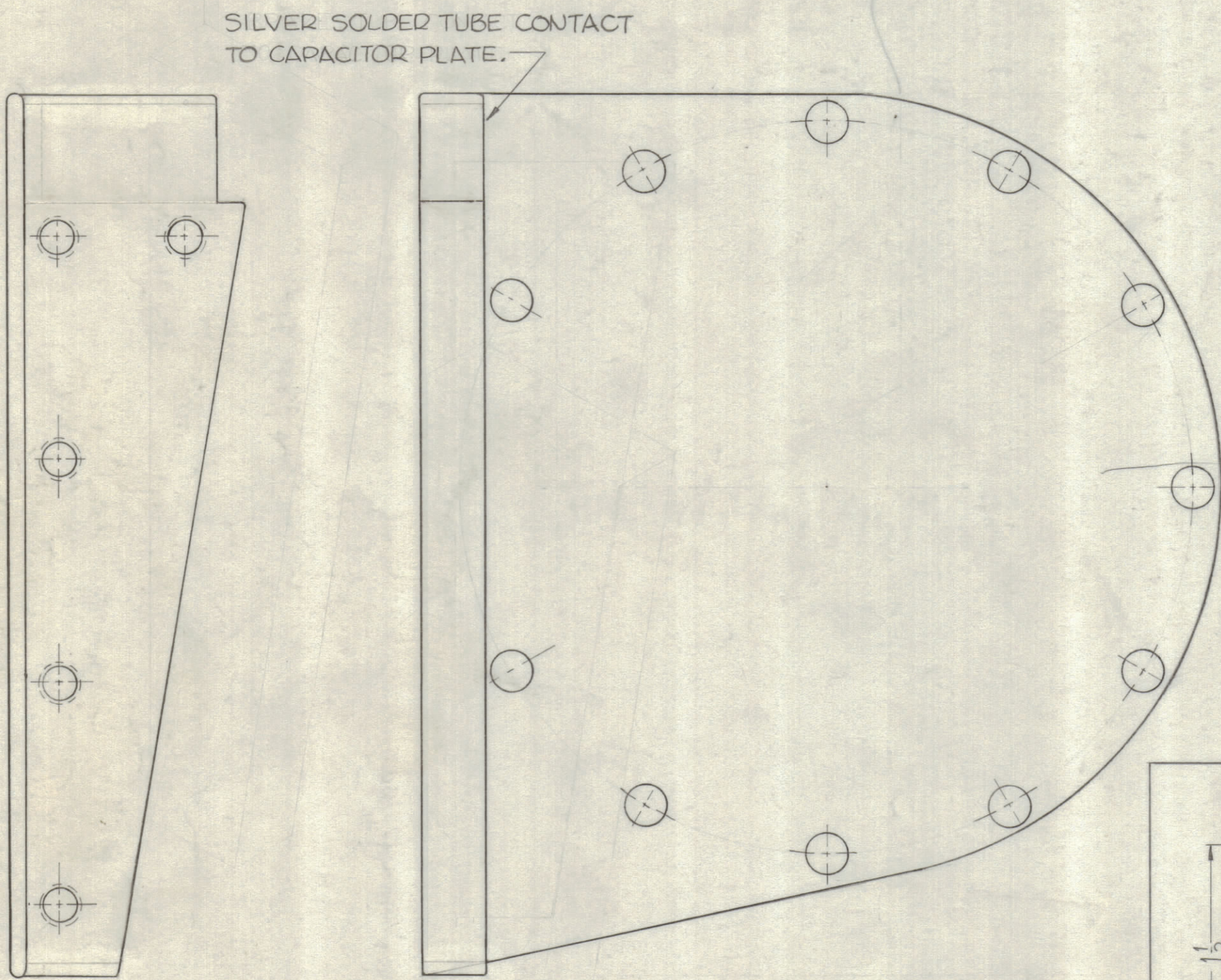


TMC PART NO.	DESCRIPTION	REQ.
PM887-1	AS SHOWN	1
PM887-2	OPPOSITE HAND	1

REVISIONS					
ZONE	SYM	DESCRIPTION	DATE	E.M.N. NO.	APPD
	0	ORIGINAL RELEASE FOR PROD.	5/1/64		



FINISHING NOTE:
 S-245 SILVER PLATE, BRIGHT
 S-423 IRIDITE, 18-P SILVER KOTE

FINISHING NOTE:
 REMOVE ALL BURRS & MACHINE MARKS
 ROUND EDGES & CORNERS
 POLISH BEFORE PLATING.
 S-245 SILVER PLATE, BRIGHT
 S-423 IRIDITE, 18-P SILVER KOTE.

PM-887 SHOWN (1 REQ.)
 PM-887-2 OPPOSITE HAND (1 REQ.)

NOTES

SEE NOTE	GPT-200 K	AX-393
Q'TY./UNIT	MODEL USED ON	ASS'Y. NO.
SCALE	CODE	
#	A	

THE CONTENTS OF THIS DRAWING ARE THE EXCLUSIVE PROPERTY OF THE TECHNICAL MATERIEL CORP. ITS UNAUTHORIZED USE OR REPRODUCTION IN WHOLE OR IN PART IS STRICTLY FORBIDDEN.

REQ'D.	ITEM	PART NUMBER	DESCRIPTION	SYMBOL
F. BUDETTI LIST OF MATERIAL				
MATERIAL		SEE EACH DETAIL		
FINISH		SEE NOTE		
		THE TECHNICAL MATERIEL CORP. MAMARONECK, NEW YORK		
		TITLE: PLATE, CAPACITOR CONNECTOR		
DRAWN		J.F. VITRO	DATE	FINAL APPROVAL
CHECKED		aa	DATE	
ELECT. DES.			DATE	
MECH. DES.			DATE	
DECIMALS		TOLERANCES		
.X ± .05		FRACTIONS ± 1/64		
.XX ± .01		ANGLES ± 0° 30'		
.XXX ± .005				
		DATE		
		SHEET		
		REV. LTR.		

PM-887 0