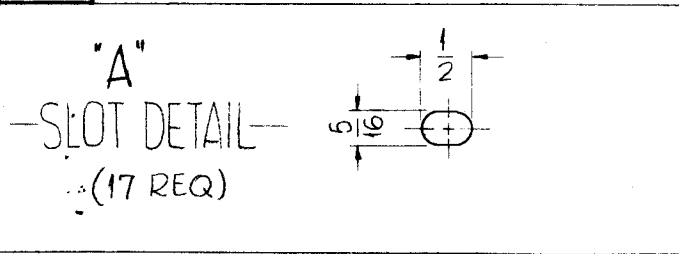


NOTE:
 BRAZE BRACKETS-A≠B
 ROUND ALL CORNERS
 ROUND ALL EDGES, INCLUDING "B" HOLE 1/32 RAD.
 POLISH BEFORE PLATING

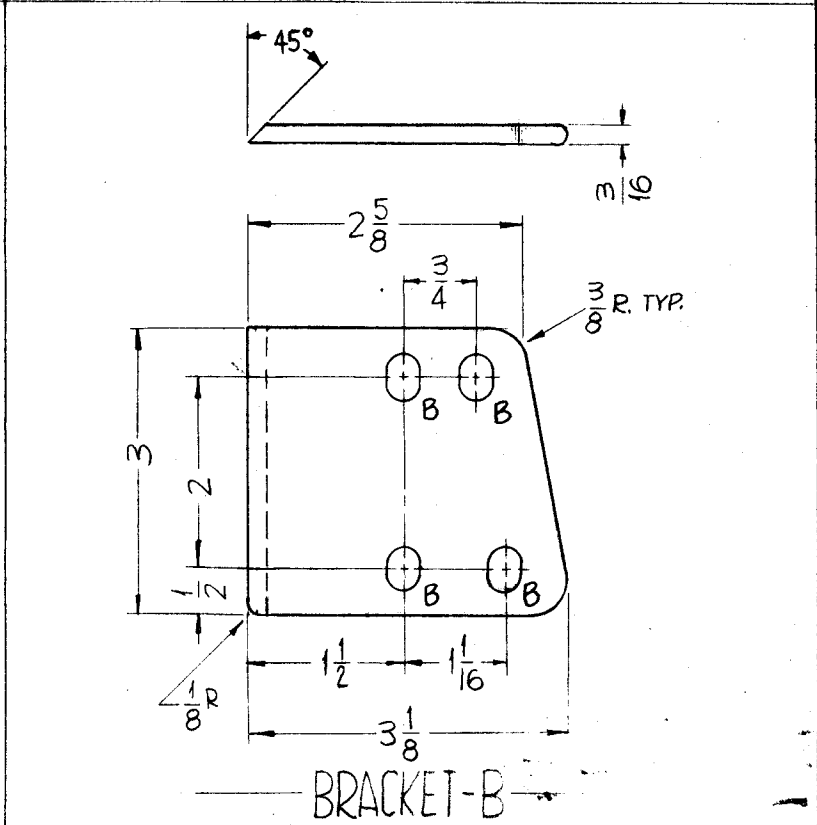
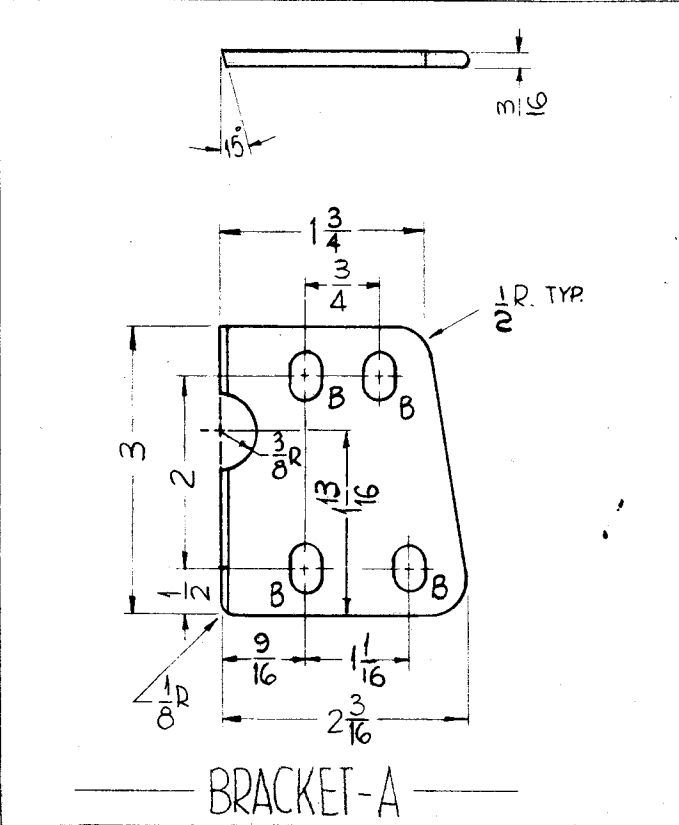
NOTES

1	GPT-200K	AS-123
QTY./UNIT	MODEL USED ON	ASBY. NO.
SCALE	CODE	
DO NOT SCALE		
THE CONTENTS OF THIS DRAWING ARE THE EXCLUSIVE PROPERTY OF THE TECHNICAL MATERIEL CORP. ITS UNAUTHORIZED USE OR REPRODUCTION IN WHOLE OR IN PART IS STRICTLY FORBIDDEN.		

REVISIONS						
SYM	DESCRIPTION	DATE	E.M.N. NO.	DRAFT	CHKD	APPD
X3	1-1/16 REF DIM WAS 1 3/16	11-1-63				
X4	"B" HOLE ADDED	2-24-64				
0	ORIGINAL RELEASE FOR PRODUCTION	5.18.64		WB		
A	ON BRKT "A" 1 1/8 WAS 1 1/8, 1/2 WAS 3/8 (BRACKET "A" DETAIL)	6.10.65	14218	F	QCB	QCB



HOLES
 A-SEE DETAIL 17 REQ
 B-3/4 DIA. 1 REQ



REQ'D.	ITEM	PART NUMBER	DESCRIPTION	SYMBOL
F. BUDETTI LIST OF MATERIAL				
MATERIAL 3/16 THICK COPPER COLD ROLLED			THE TECHNICAL MATERIEL CORP. MAMARONECK, NEW YORK	
FINISH SILVER PLATE .0003			TITLE BRACKET CONNECTING H.F. TANK	
UNLESS OTHERWISE SPECIFIED DIMENSIONS ARE IN INCHES AND INCLUDE CHEMICALLY APPLIED OR PLATED FINISHES		DRAWN SRG	DATE 1-8-63	FINAL APPROVAL ROL
DECIMALS .X ± .05 .XX ± .01 .XXX ± .005		CHECKED QA	DATE	
FRACTIONS ± 1/64 ANGLES ± 0° 30'		ELECT. DES. QCB	DATE	
TOLERANCES		MECH. DES. AC	DATE	
SHEET PM-857				A
				REV. LTR.