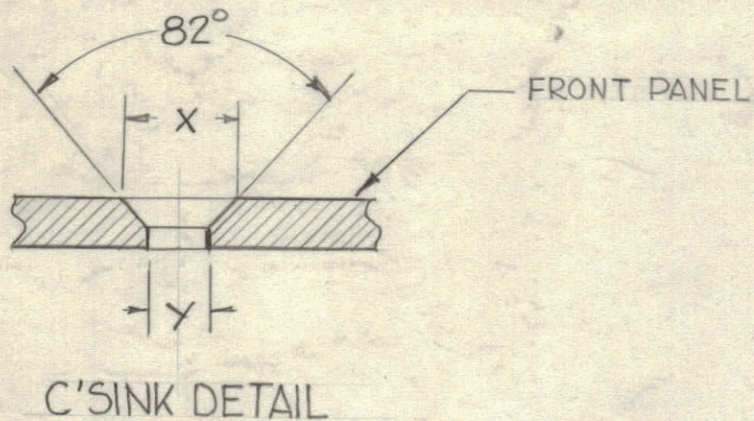
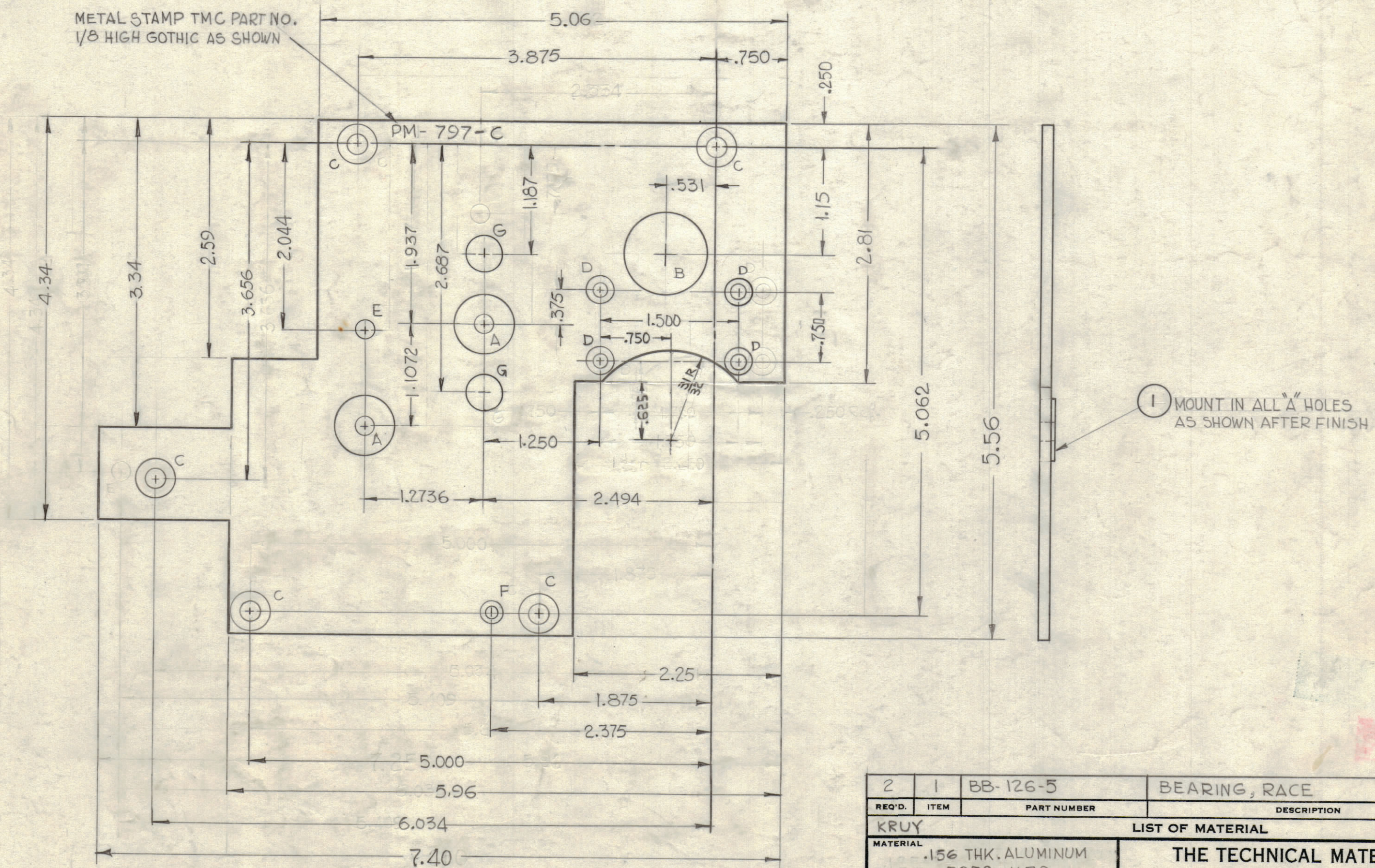


LEGEND		
HOLE	DESCRIPTION	REQ.
A	6249-6246 DIA.	2
B	7/8 DIA.	1
C	SEE C'SINK DETAIL	5
D	SEE C'SINK DETAIL	4
E	DRILL & TAP FOR 8-32	1
F	SEE C'SINK DETAIL	1
G	3/8 DIA.	2

REVISIONS						
ZONE	SYM	DESCRIPTION	DATE	E.M.N. NO.	DRAFT	CHKD
A3	A	MATERIAL THICKNESS WAS .125	9-5-62	7175	G.D.L.	
D4	B	1.500 DIM WAS 1.750; 5/8 R. ADDED	12-11-62	7847		
D4	C	1/32 R CUTOUT WAS 5/8 R	7-9-63	8527		



C'SINK DETAIL			
HOLE	TYPE	X	Y
C	10-32	.390	.196
D	6-32	.284	.144
F	4-40	.230	.120



NOTICE TO PERSONS RECEIVING THIS DRAWING

THE TECHNICAL MATERIEL CORPORATION claims proprietary right in the material disclosed hereon. This drawing is issued in confidence for engineering information only and may not be reproduced or used to manufacture anything shown hereon without permission from THE TECHNICAL MATERIEL CORPORATION to the user. This drawing is loaned for mutual assistance and is subject to recall at any time.

Property of:

THE TECHNICAL MATERIEL CORPORATION  
MAMARONECK, NEW YORK

**NOTES**

1	HFP-1	
Q'TY./UNIT	MODEL USED ON	ASS'Y. NO.
SCALE	CODE	
DO NOT SCALE		

THE CONTENTS OF THIS DRAWING ARE THE EXCLUSIVE PROPERTY OF THE TECHNICAL MATERIEL CORP. ITS UNAUTHORIZED USE OR REPRODUCTION IN WHOLE OR IN PART IS STRICTLY FORBIDDEN.

2	1	BB-126-5	BEARING, RACE	A
REQ'D.	ITEM	PART NUMBER	DESCRIPTION	SYMBOL
LIST OF MATERIAL				
KRUH			THE TECHNICAL MATERIEL CORP. MAMARONECK, NEW YORK	
MATERIAL			TITLE	
.156 THK. ALUMINUM 5052-H32			PLATE, FRONT #1	
FINISH			DRAWN	
5404 YEL. IRIDITE			G.D.L.	
			DATE	
			7-26-62	
			CHECKED	
			H.G.	
			DATE	
			7-26-62	
			ELECT. DES.	
			DATE	
			7-26-62	
			MECH. DES.	
			T.M.K.	
			DATE	
			7-26-62	
			SHEET	
			PM-797	
			C	
			REV. LTR.	

UNLESS OTHERWISE SPECIFIED  
DIMENSIONS ARE IN INCHES AND INCLUDE  
CHEMICALLY APPLIED OR PLATED FINISHES

DECIMALS  
.X ± .05  
.XX ± .01  
.XXX ± .005

**TOLERANCES**

FRACTIONS  
± 1/64  
ANGLES  
± 0° 30'

FINAL APPROVAL

DATE

DATE