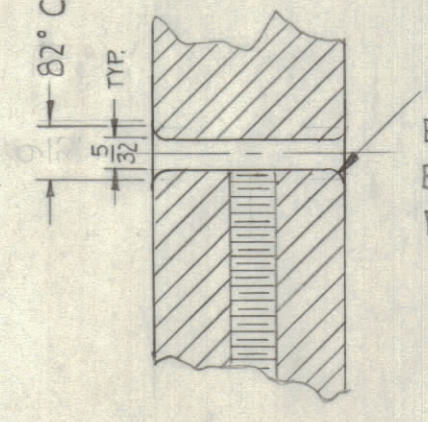
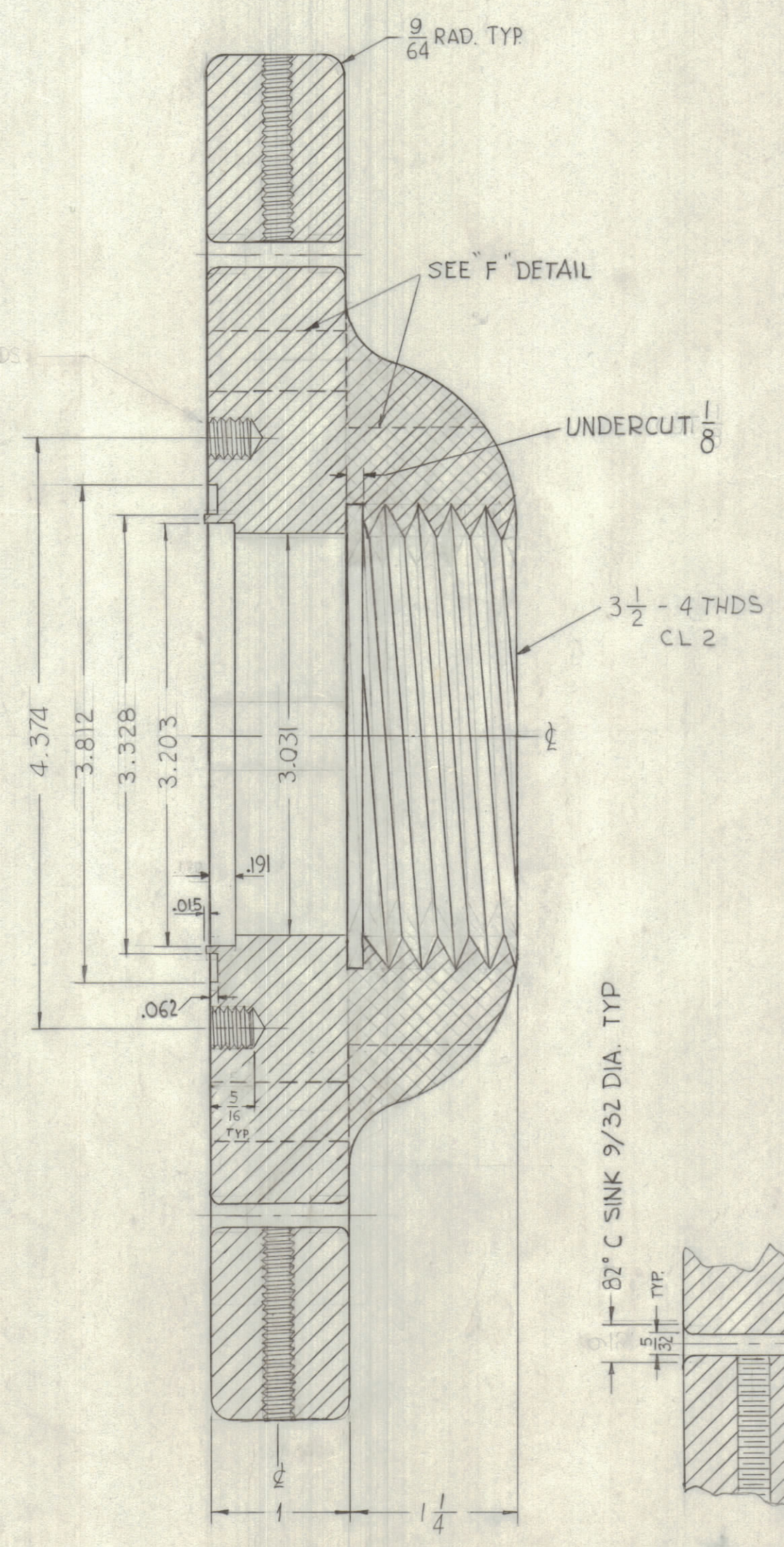
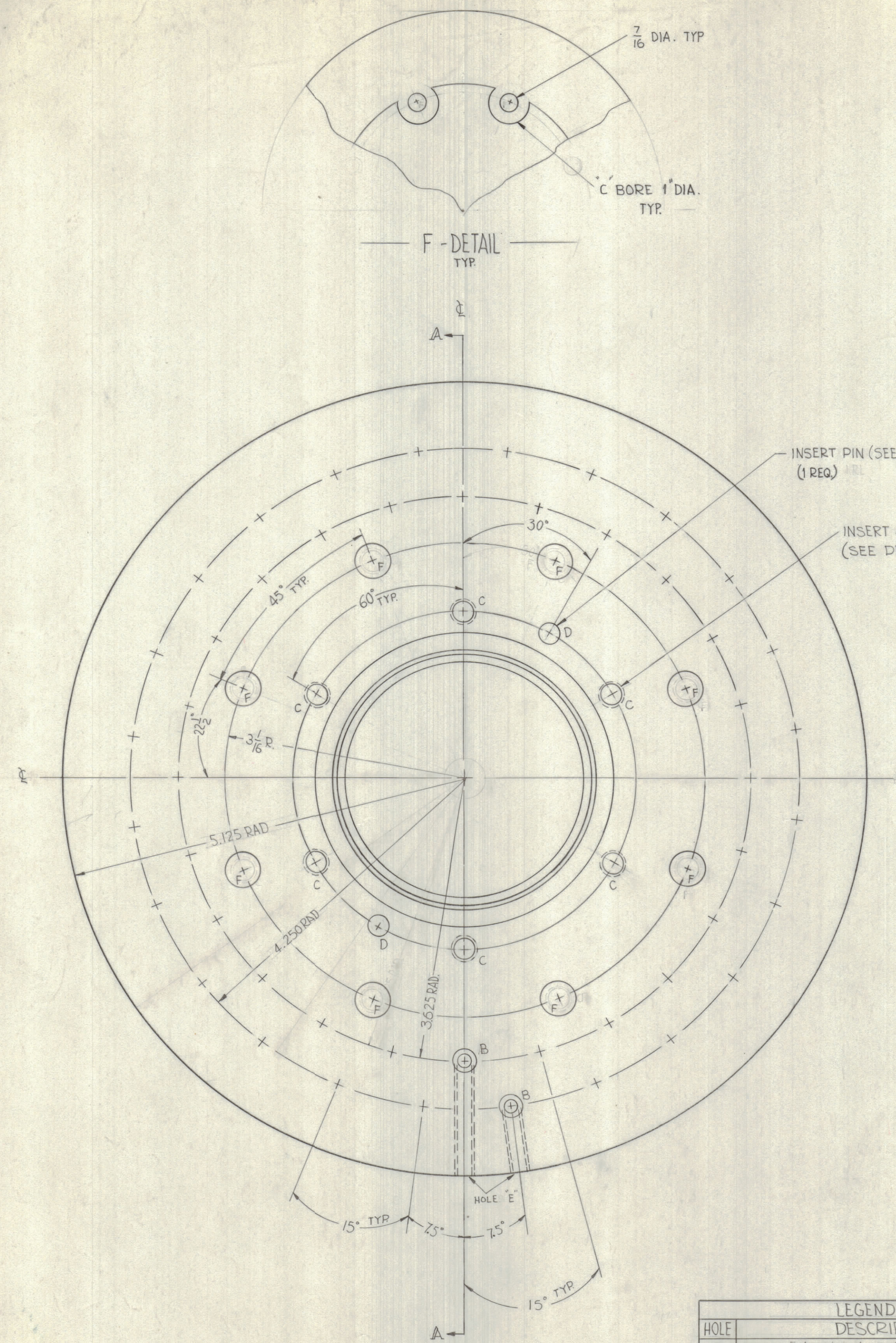
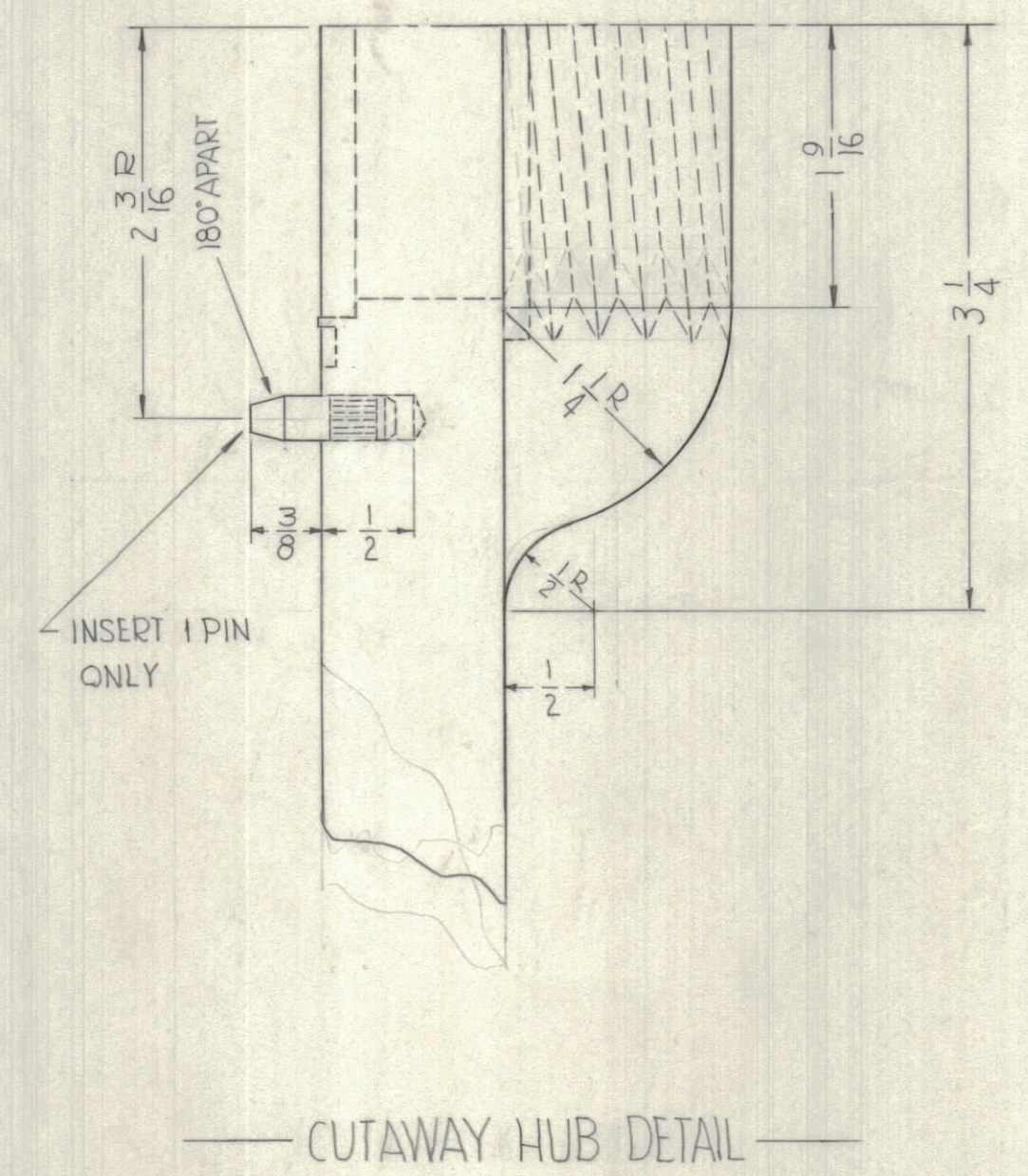
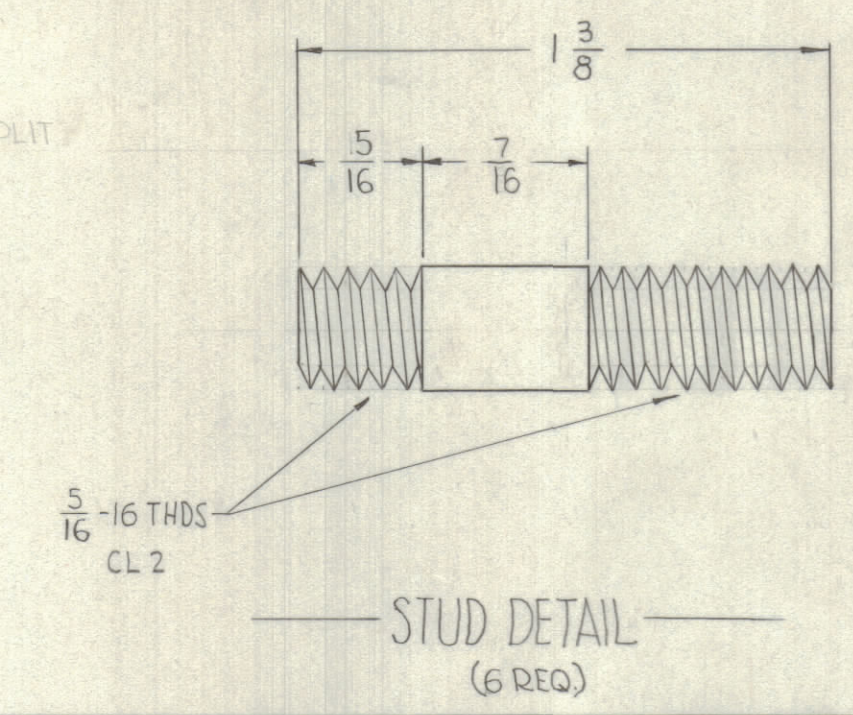


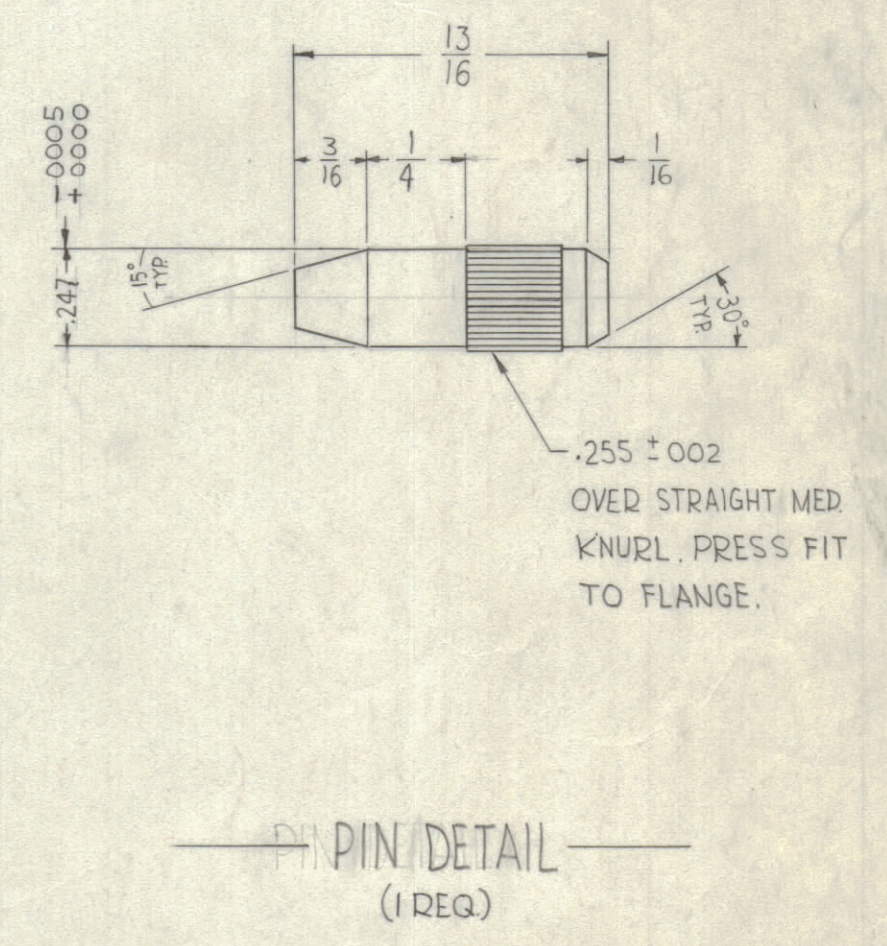
REVISIONS						
ZONE	BYM	DESCRIPTION	DATE	E.M.N. NO.	DRAFT	CHKD
Ø		ORIGINAL RELEASE FOR PRODUCTION	6/23/63			



MATERIAL: SILICONE BRONZE
SUPPLY: 6 NUTS
6 LOCKWASHERS (SPLIT)



MATERIAL: STAINLESS STEEL ROD
TYPE 303



LEGEND		
HOLE	DESCRIPTION	REQ.
B	DRILL 5/32 DIA. (SEE DETAIL)	48
C	5/16-16 THDS. CL 2 60° APART	6
D	.250 DIA. 180° APART	2
E	DRILL & TAP 10-32 THDS	48
F	7/16 DIA. (SEE DETAIL)	8

NOTES:
1. NO SHARP CORNERS
2. POLISH SMOOTH ALL HOLES SMOOTH WITH NO SHARP CORNERS.

SUPPLY:
1. PROTECTIVE PLATE (MOUNTED) PRESSWOOD

REQ'D.	ITEM	PART NUMBER	DESCRIPTION	SYMBOL
1			#10 WRENCH	
48			10/32 SET SCREWS (CUP POINT)	
			PROTECTIVE PLATE (MOUNTED) PRESSWOOD	
			O-RING	

LIST OF MATERIAL				
MATERIAL	FINISH	TITLE	DATE	FINAL APPROVAL
SILICONE BRONZE	ELECTRO POLISH	HUB, 48 WIRE CONNECTOR BOTTOM DISCONE ANTENNA 3/8 EIA	6-7-62	9/23/63

Q'TY./UNIT	MODEL USED ON	ASS'Y. NO.
	DCC-1	A-2518

DECIMALS	FRACTIONS	ELECT. DES.	DATE	MECH. DES.	DATE	SHEET	REV. LTR.
.X ± .05 .XX ± .01 .XXX ± .005	± 1/64 ANGLES ± 0° 30'						

NOTES

PM-789