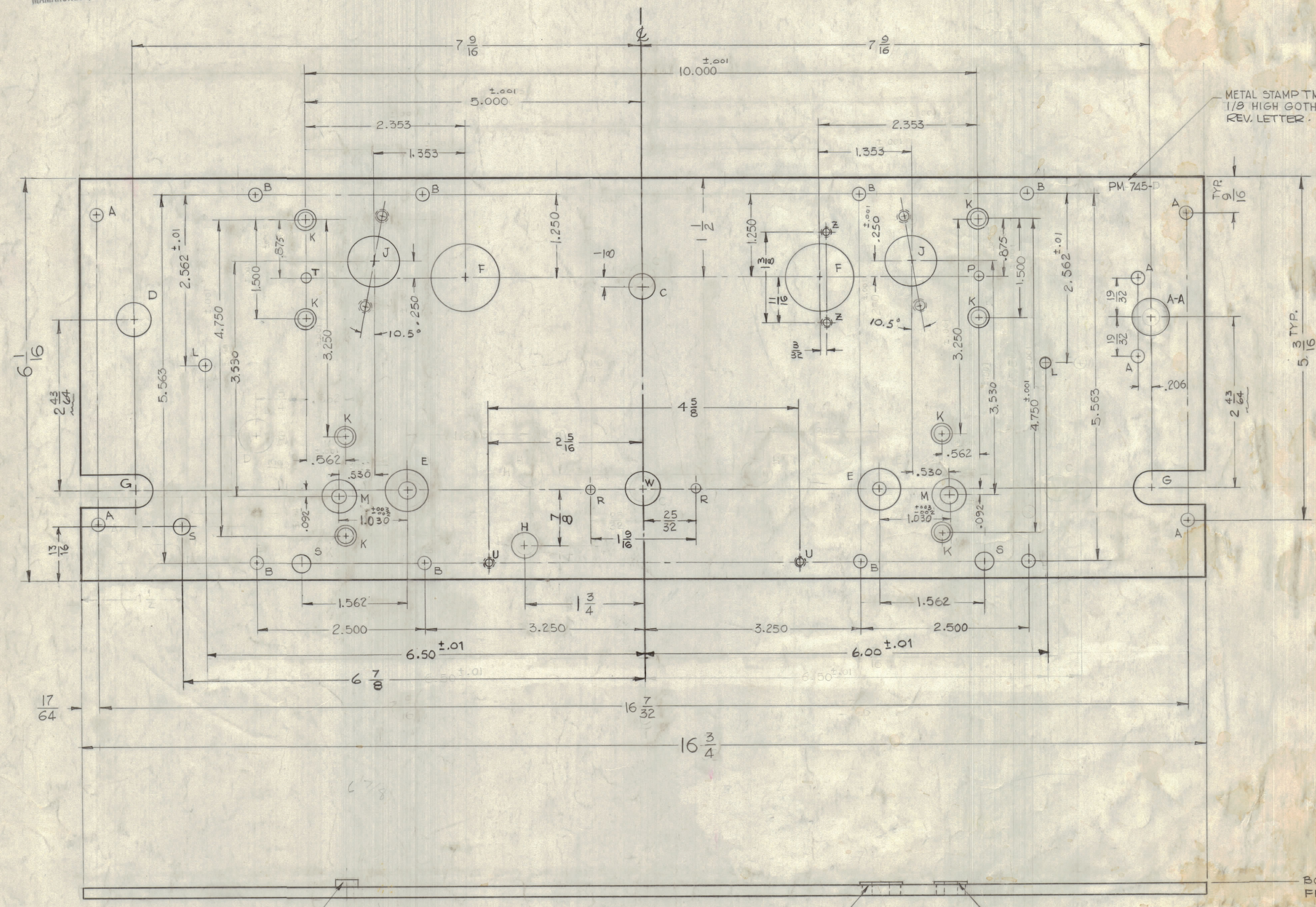
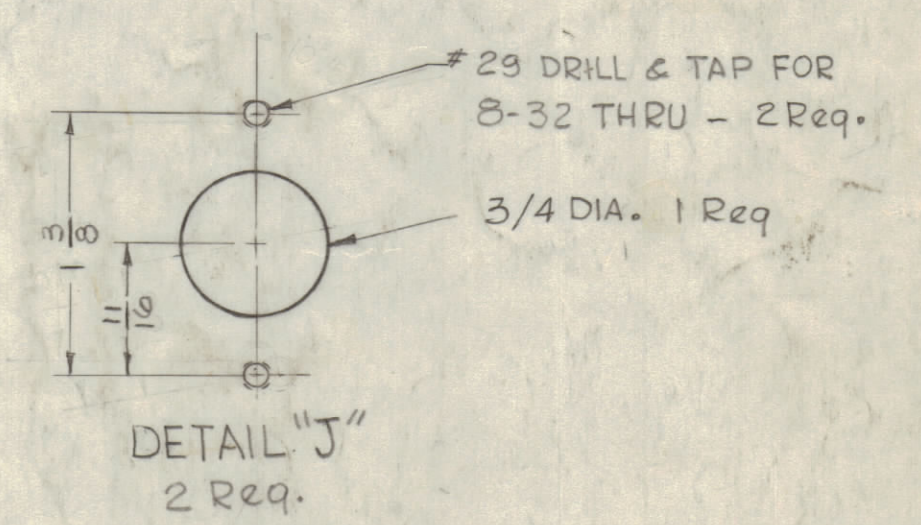
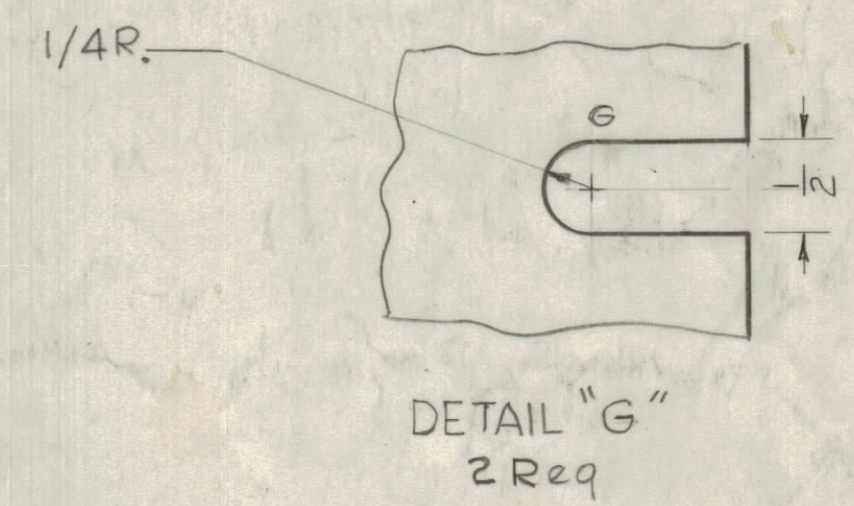


NOTICE TO PERSONS RECEIVING THIS DRAWING
 THE TECHNICAL MATERIEL CORPORATION claims proprietary right in the material disclosed hereon. This drawing is issued in confidence for engineering information only and may not be reproduced or used to manufacture anything shown hereon without permission from THE TECHNICAL MATERIEL CORPORATION to the user. This drawing is loaned for mutual assistance and is subject to recall at any time.
 Property of:
 THE TECHNICAL MATERIEL CORPORATION
 MAMARONECK, NEW YORK

REVISIONS						
ZONE	SYN	DESCRIPTION	DATE	E.M.N. NO.	DRAFT	CHKD
A2	A	ITEM (2) WAS BB-126-1; ITEM (3) WAS BB-126-2	1-3-63	7950		
E5, E9	B	(1) 1/2" HOLE DELETED, (1) 3/8" HOLE ADDED	3-6-63	8356	RC	
E6	B	(1) 1/2" HOLE RELOCATED, 6.002±.01 WAS 6.50±.01	4-10-63	8748		
D5	C	(1) R' HOLE ADDED	4-10-63	8748		
D10, D12, D6, D2	D	(1) G' SLOT ADDED, (2) U' HOLES ADDED, (2) Z' HOLES ADDED, (1) R' HOLES WERE 9/64 DIA, (1) W' HOLE ADDED WAS 1/8" HOLE	6-18-64	9290		
	E	DWG CLARIFIED & UPDATED	11/11/63	10222		
	F	ADD "S" HOLE & DIM. MODEL WAS GPR-92	11-24-64	17343	RME	



LEGEND		
HOLE	DESCRIPTION	REQ.
A	3/16 DIA.	6
B	.189 DIA.	8
C	3/8 DIA.	1
D	1/2 DIA.	1
E	.6249 - .6246 DIA.	2
F	1" DIA.	2
G	SEE DETAIL	2
H	.375 DIA.	1
J	SEE DETAIL	2
K	.224 - .221 DIA.	8
L	.177 DIA.	2
M	.4999 - .4996 DIA.	2
P	.1275 - .1265 DIA.	1
R	5/32 DIA.	2
S	.253 - .254 DIA.	3
T	# 29 (.132) DRILL	1
U	# 36 (.106) DIA & TAP 8-32 THRU	2
W	33/64 DIA	1
Z	# 43 (.089) DIA & TAP 4-40 THRU	2
A-A	9/16 DIA	1



BOTH SURFACES MUST BE FLAT WITHIN .0015 PER INCH.

- 1 MOUNT IN ALL "K" HOLES AS SHOWN AFTER FINISHING
- 2 MOUNT IN ALL "E" HOLES AS SHOWN AFTER FINISHING
- 3 MOUNT IN ALL "M" HOLES AS SHOWN AFTER FINISHING

REF: PM-744

QTY	UNIT	MODEL USED ON	ASBY. NO.
2	3	BB-126-4	RACE, BEARING
2	2	BB-126-5	RACE, BEARING
3	1	NT-129-832-6	NUT, ROUND, SWAGE TYPE

LIST OF MATERIAL			
REQ'D.	ITEM	PART NUMBER	DESCRIPTION
2	3	BB-126-4	RACE, BEARING
2	2	BB-126-5	RACE, BEARING
3	1	NT-129-832-6	NUT, ROUND, SWAGE TYPE

MATERIAL		THE TECHNICAL MATERIEL CORP.	
5/32 THK ALUMINUM 2024 T3		MAMARONECK, NEW YORK	
FINISH		TITLE	
S404 YELLOW IRIDITE		PLATE, GEAR	
SCALE	DO NOT SCALE	DRAWN	GDL
DATE	10/31/62	CHECKED	JDE
DATE	12/5/62	DATE	12/5/62
DATE	11/20/64	DATE	11/20/64
THE CONTENTS OF THIS DRAWING ARE THE EXCLUSIVE PROPERTY OF THE TECHNICAL MATERIEL CORP. ITS UNAUTHORIZED USE OR REPRODUCTION IN WHOLE OR IN PART IS STRICTLY FORBIDDEN.		TOLERANCES	
DECIMALS ±.005		FRACTIONS ± 1/64 ANGLES ± 30'	
TECH. DES.		D. M.	
SHEET		PM-745	
REV. LTR.		F	

NOTES

PM 745