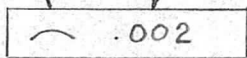




REQ. PER UNIT	USED ON			PM-602	A
	MODEL	ASS'Y. NO.	DATE		
2	GPT-40K	AX-209	2-16-60		

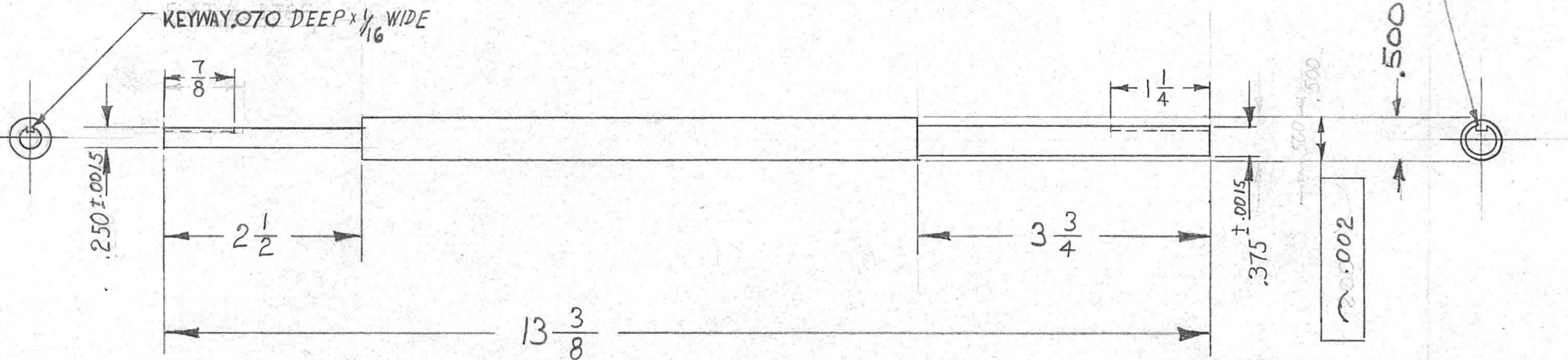
SYMBOL → TOLERANCE



WITHIN  
.002 INCH

THIS AXIS OR  
AXIAL PLANE SHALL  
BE STRAIGHT

KEYWAY .070 DEEP x 1/8 WIDE

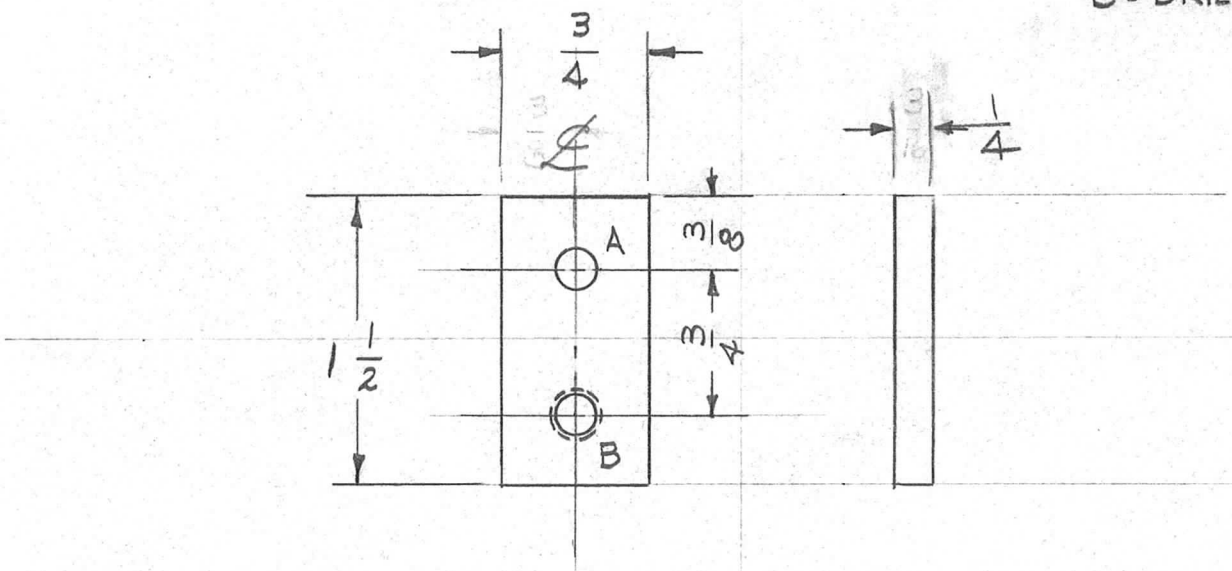


METHOD OF SPECIFYING  
STRAIGHTNESS ON DRAWINGS

REQ.	ITEM	PART NO.	DESCRIPTION				SYMBOL
		1/2 ROD STOCK	THE TECHNICAL MATERIEL CORP.				
		STOCK SIZE	MAMARONECK, NEW YORK				
A	1	Keyway was 1/16 deep (Both ends)	1-17-61	3903	RU	JCS	OB
		STAINLESS STEEL	CAPACITOR SHAFT				
		MATERIAL					
ISSUE ITEM			CHANGED FROM	DATE	CH. NO.	CHECKER	ENG. APP.
TOLERANCES			SCALE: 1/2				
DEC. DIM. ±			MAXIMUM ALLOWABLE TOLERANCES HAVE BEEN DETERMINED AND ANY DEVIATIONS WILL BE CAUSE FOR REJECTION. REMOVE ALL BURRS AND SHARP EDGES				
FRAC. DIM. ± 1/64							
ANGULAR DIM. ±							
TYPE & TEMPER		HEAT TREAT. SPEC.	DRAWN		CHECKED		FINAL APPROVAL
PASSIVATE			W.F.		H. De		Z.B.
FINISH & SPEC. NO.		ELEC. DES. APP.	MECH. DES. APP.		PM-602		
					A		

REQ. PER. UNIT	USED ON			PM-604
	MODEL	ASS'Y. NO.	DATE	
6	AP-102	GPT 40K	2-23-60	
6	AP-103	GPT 40K	2-23-60	

HOLES  
 A - 13/64 (.203) D, 1  
 B - DRILL & TAP FOR 10-32 (.159) D, 1

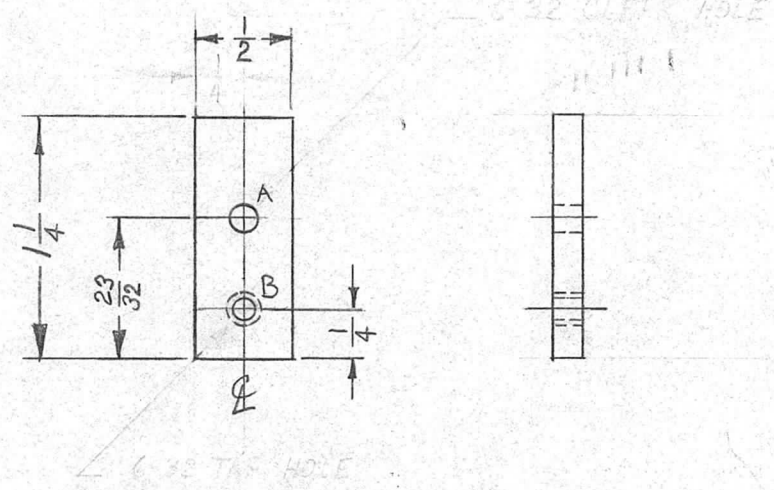


							REQ.	ITEM	PART NO.	DESCRIPTION			SYMBOL
									1/4	THE TECHNICAL MATERIEL CORP.			
									STOCK SIZE	MAMARONECK, NEW YORK			
									BRASS	PLATE, CONTACT, FILTER			
									MATERIAL	MTG. BOARD			
ISSUE	ITEM	CHANGED FROM	DATE	CH. NO.	DRAFTS	CHECKER	ENG. APP.	1/2 HARD		<i>LORILLO</i>	<i>HDe</i>	<i>203</i>	
TOLERANCES			SCALE:					TYPE & TEMPER	HEATTREAT. SPEC.	DRAWN	CHECKED	FINAL APPROVAL	
DEC. DIM. ± FRAC. DIM. ± ANGULAR DIM. ±			MAXIMUM ALLOWABLE TOLERANCES HAVE BEEN DETERMINED AND ANY DEVIATIONS WILL BE CAUSE FOR REJECTION. REMOVE ALL BURRS AND SHARP EDGES					0005 NICKEL PZ			<i>EW</i>	PM-604	
							FINISH & SPEC. NO.	ELEC. DES. APP.	MECH. DES. APP.				



REQ. PER UNIT	USED ON			PM 605	A
	MODEL	ASS'Y. NO.	DATE		
16	GPT-40K	AP-102	2-17-60		

A- 9/64 D. HOLE 1 REQ  
 B- DRILL & TAP FOR 6-32 1 REQ.



ISSUE	ITEM	CHANGED FROM	DATE	CH. NO.	DRAFTS	CHECKER	ENG. APP.	REQ.	ITEM	PART NO.	DESCRIPTION	SYMBOL			
											THE TECHNICAL MATERIEL CORP. MAMARONECK, NEW YORK				
										3/16 THK			PLATE, CONTACT,		
										STOCK SIZE	INTERCONNECT FILTER TERM. BD.				
A	1	REQ. PER UNIT WAS 20	3-3-60	~	WF	De	De			BRASS					
										MATERIAL					
TOLERANCES			SCALE: FIVE								1/2 HARD	WF	De	De	
DEC. DIM. ±			MAXIMUM ALLOWABLE TOLERANCES HAVE BEEN DETERMINED AND ANY DEVIATIONS WILL BE CAUSE FOR REJECTION. REMOVE ALL BURRS AND SHARP EDGES								TYPE & TEMPER	HEATTREAT. SPEC.	DRAWN	CHECKED	FINAL APPROVAL
FRAC. DIM. ± 1/64														NICKEL PLATE .0005	
ANGULAR DIM. ±											FINISH & SPEC. NO.	ELEC. DES. APP	MECH. DES. APP	PM-605	A

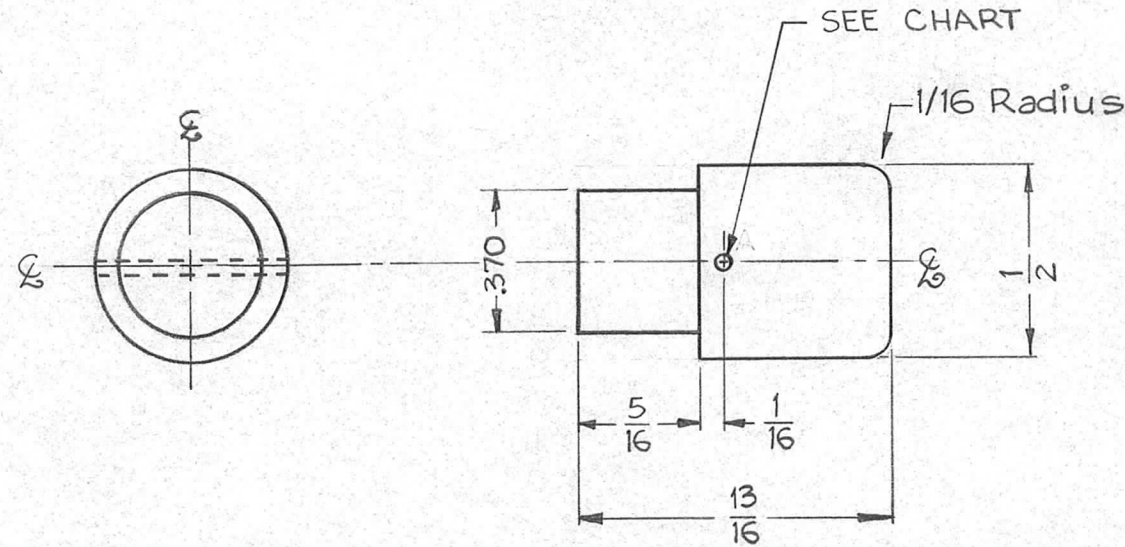


REQ. PER UNIT	USED ON		
	MODEL	ASS'Y. NO.	DATE
16	GPT-40K	A-1838	2-23-60
6	RAK 110-2		
6	RAK 111-2		

PM-606 B

PART NO.	HOLE SIZE	NO. REQ'D
PM 606	#51 DRILL	1
PM 606-2	#42 DRILL	1

HOLE  
A = No. 51 Drill



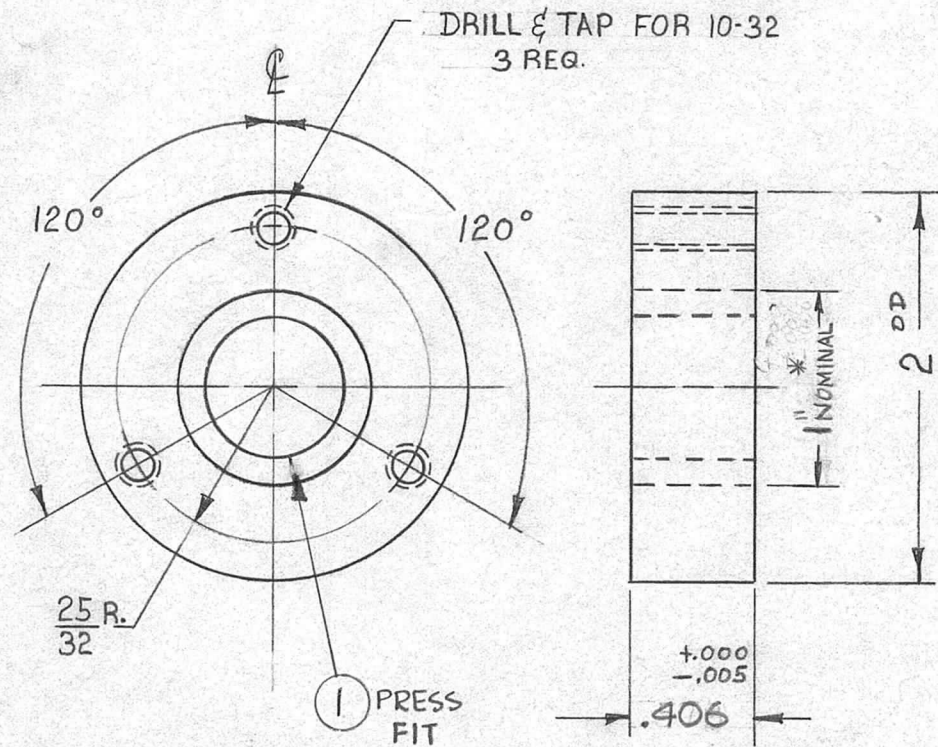
NOTE:  
Part of chart used in  
10K - 40K Interdigital  
filter.

REQ.	ITEM	PART NO.	DESCRIPTION		SYMBOL							
			THE TECHNICAL MATERIEL CORP. MAMARONECK, NEW YORK									
B	FINISH DELETED	11/16/66	17273	4410	QC/S							
A	ADD P/N CHART & SEE CHART NOTE. ADD RAK 110-2 & RAK 111-2 REQ	9-15-66	16849	R M E	QC/S							
ISSUE	ITEM	CHANGED FROM	DATE	CH. NO.	DRAFTS	CHECKER	ENG. APP.	STOCK SIZE	BRASS	MATERIAL	CONTACT, END, FILTER COIL	
TOLERANCES			SCALE:				TYPE & TEMPER		HEAT TREAT. SPEC.	DRAWN	CHECKED	FINAL APPROVAL
DEC. DIM. $\pm$ FRAC. DIM. $\pm$ ANGULAR DIM. $\pm$			MAXIMUM ALLOWABLE TOLERANCES HAVE BEEN DETERMINED AND ANY DEVIATIONS WILL BE CAUSE FOR REJECTION. REMOVE ALL BURRS AND SHARP EDGES				FINISH & SPEC. NO.		ELEC. DES. APP.	MECH. DES. APP.	PM-606 B	





REQ. PER UNIT	USED ON			PM-615 D
	MODEL	ASS'Y. NO.	DATE	
1	GPT-40K	AX-209	3-1-60	



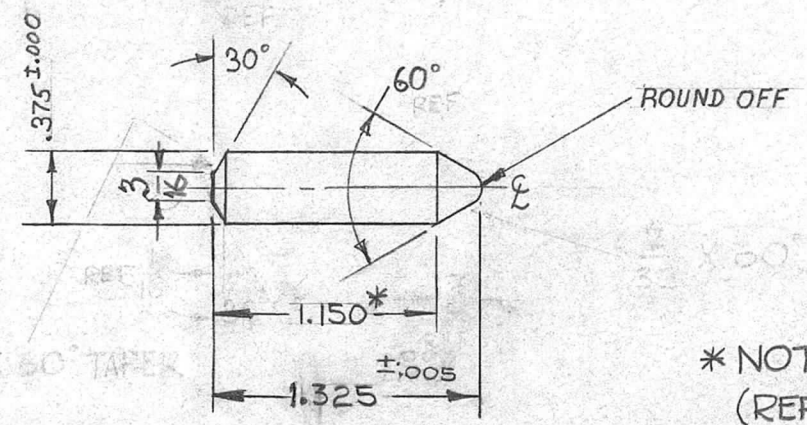
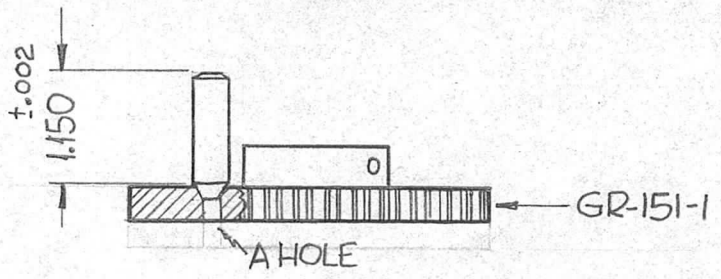
\* -- DIA TO BE SNUG FIT (CLASS 4) WITH BEARING OD. TMC \* BB-123-1

\* REF TO RE PRESS FIT FOR BB-123-1

D		1	ITEM(S) ADDED	2-7-63	8137	<i>HA</i>	<i>16</i>	1	1	BB-123-1	BEARING, CYLINDRICAL		
C		2	ANGULAR DIM. TOLERANCE	11/1/60	3515	DM	<i>OCB</i>	THE TECHNICAL MATERIEL CORP. MAMARONECK, NEW YORK HUB, BEARING, BOTTOM					
B		2	ADDED TOLERANCE (1.002)	3-21-60	~	<i>MA</i>	<i>16</i>						
A		1	DELETED NOTE (SNUG FIT)	3/17/60	#	<i>cy</i>	<i>16</i>						
A		1	* NOTE ADDED	3/17/60	#	<i>cy</i>	<i>16</i>	STAINLESS STEEL					
ISSUE		ITEM	CHANGED FROM	DATE	CH. NO.	DRAFTS	CHECKER	ENG. APP.	MATERIAL		303		
TOLERANCES (UNLESS OTHERWISE SPECIFIED)				SCALE:				TYPE & TEMPER		HEAT TREAT. SPEC.		DRAWN	
DEC. DIM. ±				MAXIMUM ALLOWABLE TOLERANCES HAVE BEEN DETERMINED AND ANY DEVIATIONS WILL BE CAUSE FOR REJECTION. REMOVE ALL BURRS AND SHARP EDGES				PASSIVATE		CHECKED		FINAL APPROVAL	
FRAC. DIM. ± 1/64								FINISH & SPEC. NO.		MECH. DES. APP		ELEC. DES. APP	
ANGULAR DIM. ± 2°													



REQ. PER UNIT	USED ON			PM-616	B
	MODEL	ASS'Y. NO.	DATE		
1	GPT-40K	AX-209	3-1-60		



\* NOTE ~ THE ASS'Y MEASUREMENT (REF A HOLES GR-151-1) MUST BE 1.150 ±.002.

REQ.	ITEM	PART NO.	DESCRIPTION			SYMBOL
		3/8 D.	THE TECHNICAL MATERIEL CORP.			
		STOCK SIZE	MAMARONECK, NEW YORK			
		STAINLESS STEEL	SHAFT, LOCK			
		MATERIAL				
		# 303				
		TYPE & TEMPER	HEATTREAT. SPEC.	DRAWN	CHECKED	FINAL APPROVAL
		PASSIVATE				
		FINISH & SPEC. NO.	ELEC. DES. APP	MECH. DES. APP		
					PM-616	B

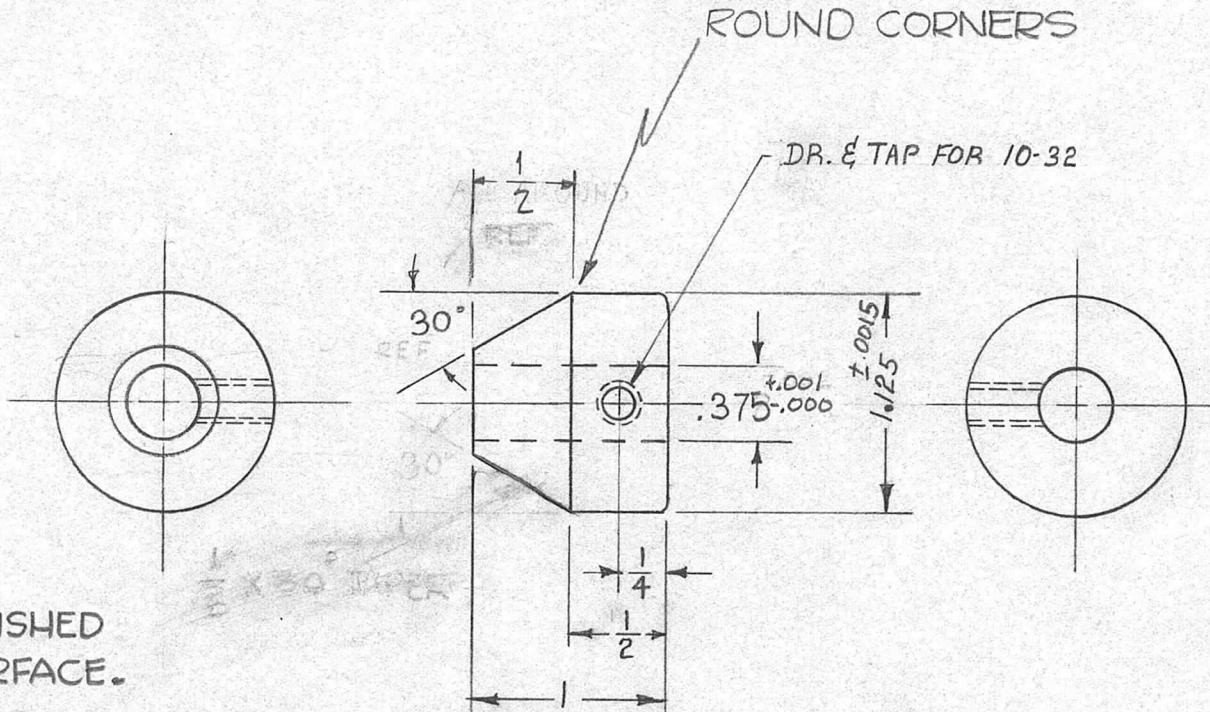
  

ISSUE	ITEM	CHANGED FROM	DATE	CH. NO.	DRAFTS	CHECKER	ENG. APP.
B	3	TOLERANCES CHANGED	11-17-60	3518	DM	JCR	QJB
	2	DETAIL ADDED					
	1	NOTE ADDED					
A	2	ADD 1.150 DIM.	3-23-60	*	CS		16
	1	ADD 1.325 DIM.					

TOLERANCES (UNLESS OTHERWISE SPECIFIED)		SCALE:
DEC. DIM. ±		MAXIMUM ALLOWABLE TOLERANCES HAVE BEEN DETERMINED AND ANY DEVIATIONS WILL BE CAUSE FOR REJECTION. REMOVE ALL BURRS AND SHARP EDGES
FRAC. DIM. ± 1/64		
ANGULAR DIM. ± 0.20		

REQ. PER UNIT	USED ON			PM-617	B
	MODEL	ASS'Y. NO.	DATE		
1	GPT-40K	AX-209	3-1-60		



NOTE ~ POLISHED GROUND SURFACE.

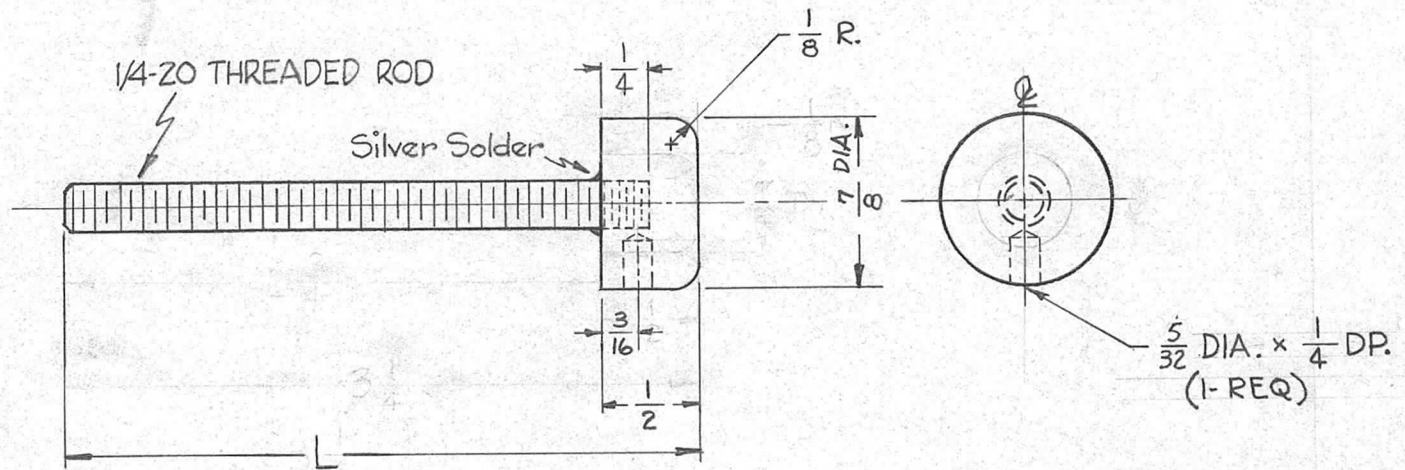
REQ.	ITEM	PART NO.	DESCRIPTION			SYMBOL		
		1 1/8 OD.	THE TECHNICAL MATERIEL CORP.					
		STOCK SIZE	MAMARONECK, NEW YORK					
B		COLD WORK TOOL STEEL	BUSHING, ACTUATOR					
A	1	MATERIAL						
ISSUE	ITEM	CHANGED FROM	DATE	CH. NO.	DRAFTS	CHECKER	ENG. APP.	
		TOLERANCES CHANGED NOTE ADDED	11-16-60	3515	DAM	QCS	JB	
		TYPE WAS AISI-SAE-A2	3-22-60	~	mf	file	mc	
		TOLERANCES (UNLESS OTHERWISE SPECIFIED)	SCALE:					
		DEC. DIM. ±	MAXIMUM ALLOWABLE TOLERANCES HAVE BEEN DETERMINED AND ANY DEVIATIONS WILL BE CAUSE FOR REJECTION.					
		FRAC. DIM. ± 1/64	REMOVE ALL BURRS AND SHARP EDGES					
		ANGULAR DIM. ± 0.5°						
		FINISH & SPEC. NO.	TYPE & TEMPER		EAT TREAT. SPEC.	DRAWN	CHECKED	FINAL APPROVAL
			NICKEL PLATED .0002					
			OIL HARDENING					
			AT 01					
			DRAWN					
			CHECKED					
			ELEC. DES. APP					
			MECH. DES. APP					
			PM-617					B



TMC PART NO.	Dim. "L"
PM618	3 1/4
PM618-2	3 1/2

REQ. PER UNIT	USED ON		
	MODEL	ASS'Y. NO.	DATE
8	GPT-40K	AP-105	5-23-60
3	GPT-40K	AX-212	5-23-60

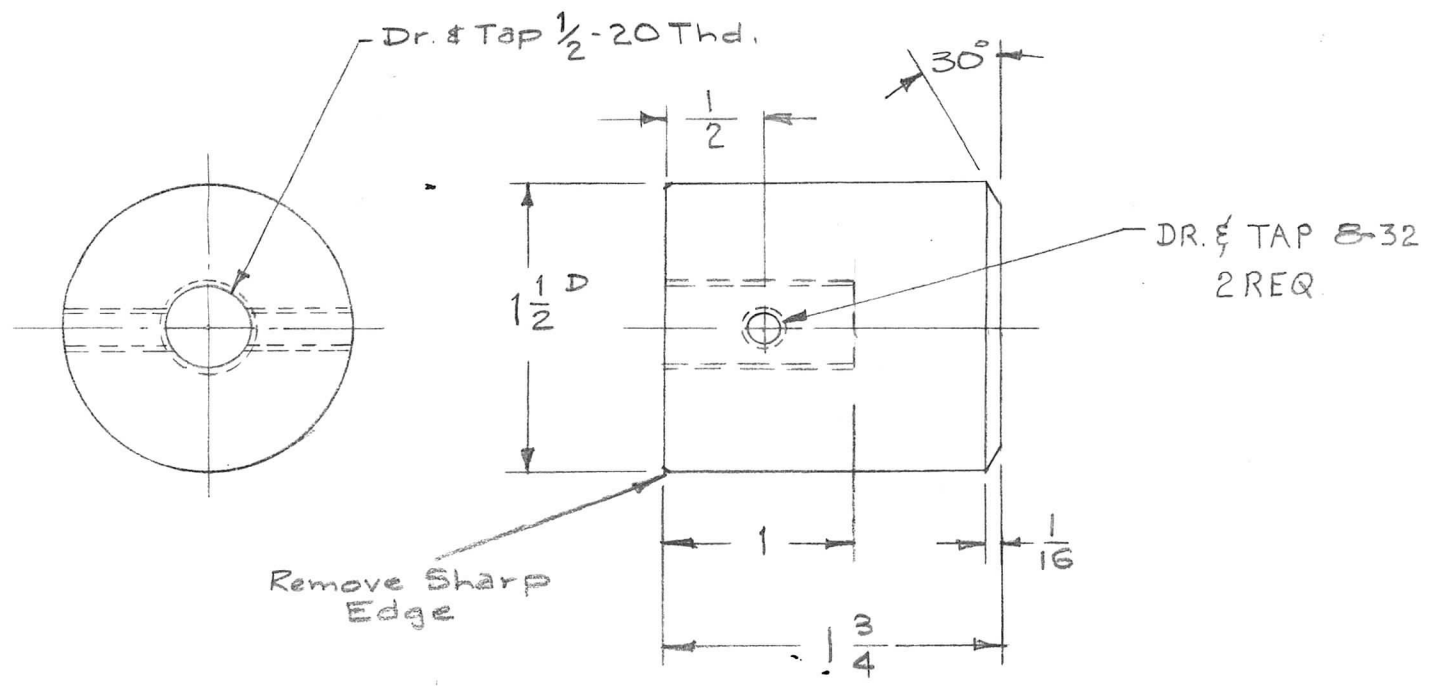
PM 618 C



ISSUE	ITEM	CHANGED FROM	DATE	CH. NO.	DRAFTS	CHECKER	ENG. APP.	REQ.	ITEM	PART NO.	DESCRIPTION	SYMBOL	
C		ADD. P/N CHART	3-21-66	15981	HLA	<i>[Signature]</i>	<i>[Signature]</i>			7/8 DIA. ROD	<b>THE TECHNICAL MATERIEL CORP.</b> MAMARONECK, NEW YORK <b>CONTACT BUTTON</b>	C	
B	1	5/32 DIA x 1/4 DP. HOLE ADDED	9-12-62	7201	G.S.	<i>[Signature]</i>	<i>[Signature]</i>			STOCK SIZE			
A	1	7/8 D. ROD WAS 1/2	5-23-60	2316	<i>[Signature]</i>	<i>[Signature]</i>	<i>[Signature]</i>			BRASS			
										MATERIAL			
TOLERANCES			SCALE:					Half Hard			<i>[Signature]</i>	<i>[Signature]</i>	
DEC. DIM. ± FRAC. DIM. ± ANGULAR DIM. ±			MAXIMUM ALLOWABLE TOLERANCES HAVE BEEN DETERMINED AND ANY DEVIATIONS WILL BE CAUSE FOR REJECTION. REMOVE ALL BURRS AND SHARP EDGES					Type & Temper	HEATTREAT. SPEC.	DRAWN	CHECKED	FINAL APPROVAL	
								Nickel Plate			<i>[Signature]</i>	PM 618	C
								FINISH & SPEC. NO.		ELEC. DES. APP	MECH. DES. APP		

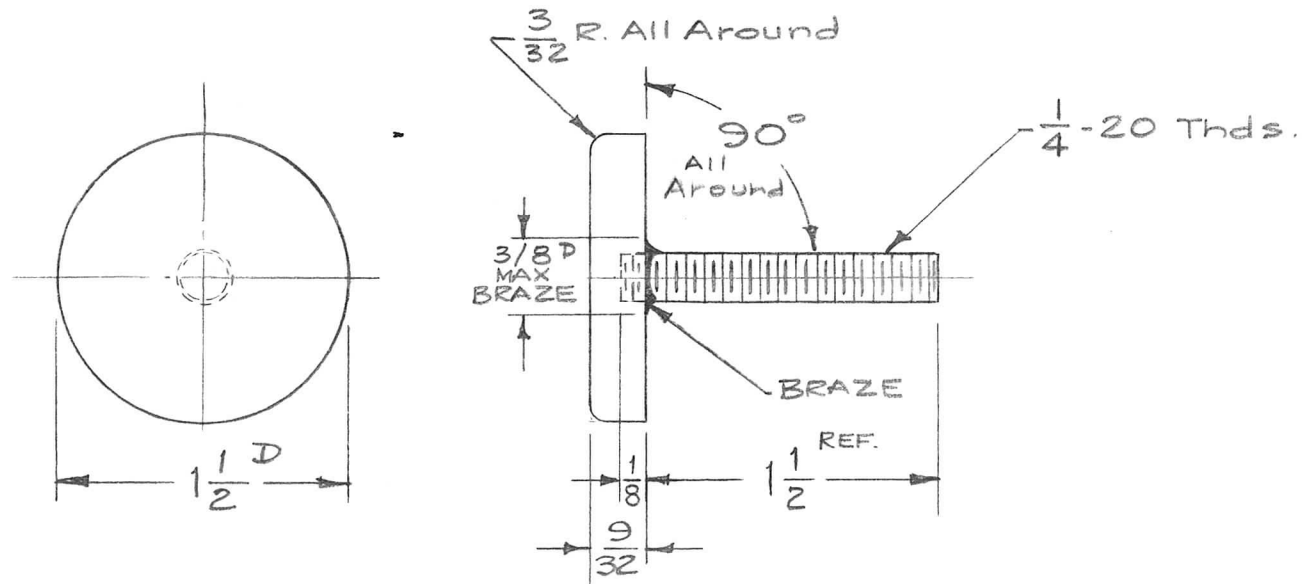


REQ. PER UNIT	USED ON			PM-620	A
	MODEL	ASS'Y. NO.	DATE		
2	AP-103(40K)	AX-223	3-12-60		



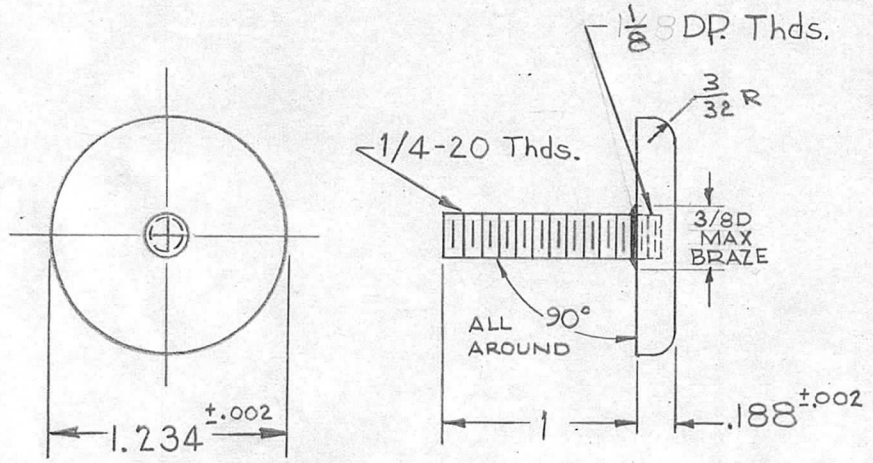
								REQ.	ITEM	PART NO.	DESCRIPTION	SYMBOL				
										1 1/2 OD	THE TECHNICAL MATERIEL CORP.					
										STOCK SIZE	MAMARONECK, NEW YORK					
										Brass	CONTACT, BALANCED OUTPUT					
										MATERIAL						
A	1	DR. & TAP FOR 8-32 ADDED	4-11-60	2118	MB			Free Turning	11/3/60							
ISSUE	ITEM	CHANGED FROM	DATE	CH. NO.	DRAFTS	CHECKER	ENG. APP.									
TOLERANCES			SCALE: FULL													
DEC. DIM. ±			MAXIMUM ALLOWABLE TOLERANCES HAVE BEEN DETERMINED AND ANY DEVIATIONS WILL BE CAUSE FOR REJECTION. REMOVE ALL BURRS AND SHARP EDGES					TYPE & TEMPER	HEATTREAT. SPEC.	DRAWN	CHECKED	FINAL APPROVAL				
FRAC. DIM. ± 1/64								Free Turning								
ANGULAR DIM. ±								Rhodium Plate	.000025							PM-620
								FINISH & SPEC. NO.		ELEC. DES. APP.	MECH. DES. APP.					

REQ. PER UNIT	USED ON			PM-621
	MODEL	ASS'Y. NO.	DATE	
1	AT-101(40K)		3-12-60	

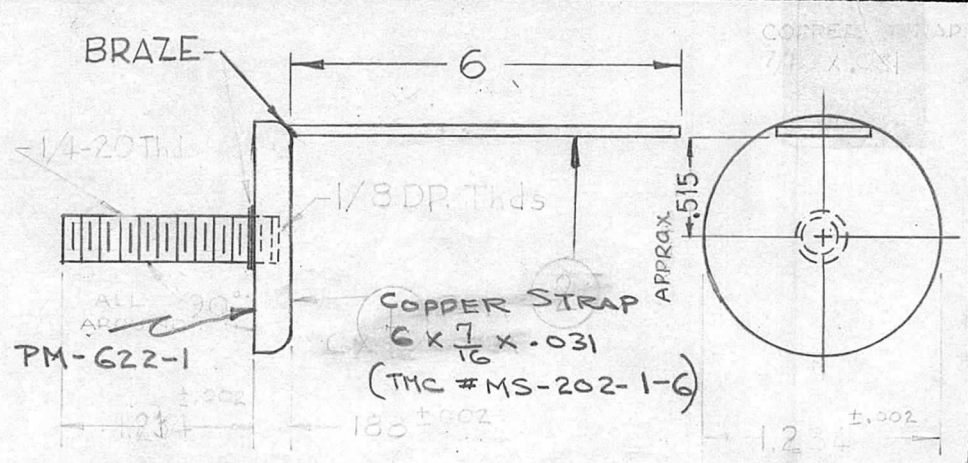


REQ.	ITEM	PART NO.	DESCRIPTION		SYMBOL								
			THE TECHNICAL MATERIEL CORP.										
			MAMARONECK, NEW YORK										
			BUTTON, CONTACT, SIDE										
			(ANTENNA TUNER)										
ISSUE	ITEM	CHANGED FROM	DATE	CH. NO.	DRAFTS	CHECKER	ENG. APP.	MATERIAL					
TOLERANCES			SCALE: FULL							16 <sup>3/12/60</sup>	<i>JL</i>	<i>QB</i>	
DEC. DIM. ±			MAXIMUM ALLOWABLE TOLERANCES HAVE BEEN DETERMINED AND ANY DEVIATIONS WILL BE CAUSE FOR REJECTION. REMOVE ALL BURRS AND SHARP EDGES					TYPE & TEMPER	HEAT TREAT. SPEC.	DRAWN	CHECKED	FINAL APPROVAL	
FRAC. DIM. ± 1/64								RHODIUM PLATE					
ANGULAR DIM. ±								FINISH & SPEC. NO.		ELEC. DES. APP	MECH. DES. APP		
												PM-621	

REQ. PER. UNIT	USED ON			PM-622 C
	MODEL	ASS'Y. NO.	DATE	
1	GPT-40KE		12-29-60	



PM-622-1 (w/o STRAP)



PM-622-2 (w/STRAP AS SHOWN)

1	2	MS-202-1-6	STRAP, COPPER
1	1	PM-622-1	CONTACT, SWITCH

ISSUE	ITEM	CHANGED FROM	DATE	CH. NO.	DRAFTS	CHECKER	ENG. APP.
C	1	on PM-622-2, dimension .515 was .671	5-5-61	4839	JPM	JCB	16
B	1	REDRAWN, REVISED PM-622-1 was PM-622	1/3/61	3883	Jde		OB

TOLERANCES

SCALE: FULL DO NOT SCALE

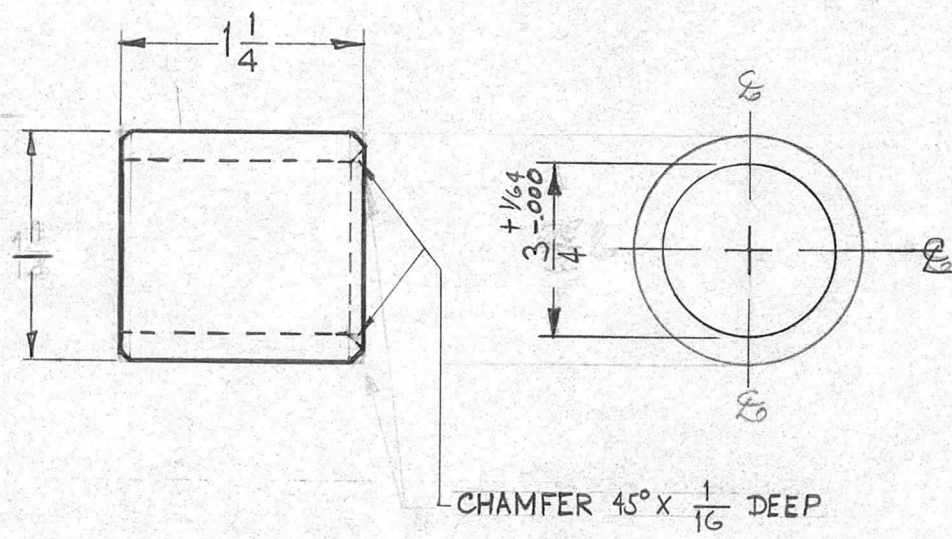
DEC. DIM. ±  
FRAC. DIM. ±  
ANGULAR DIM. ±

MAXIMUM ALLOWABLE TOLERANCES HAVE BEEN DETERMINED AND ANY DEVIATIONS WILL BE CAUSE FOR REJECTION. REMOVE ALL BURRS AND SHARP EDGES

REQ.	ITEM	PART NO.	DESCRIPTION	SYMBOL
			THE TECHNICAL MATERIEL CORP. MAMARONECK, NEW YORK	
STOCK SIZE			CONTACT, SWITCH, CAP	
MATERIAL			BRASS	
			ANNTENNA TUNER	
TYPE & TEMPER		HEAT TREAT. SPEC.	R. UZZO	Jde
FINISH & SPEC. NO.			OB	OB
			PM-622	C

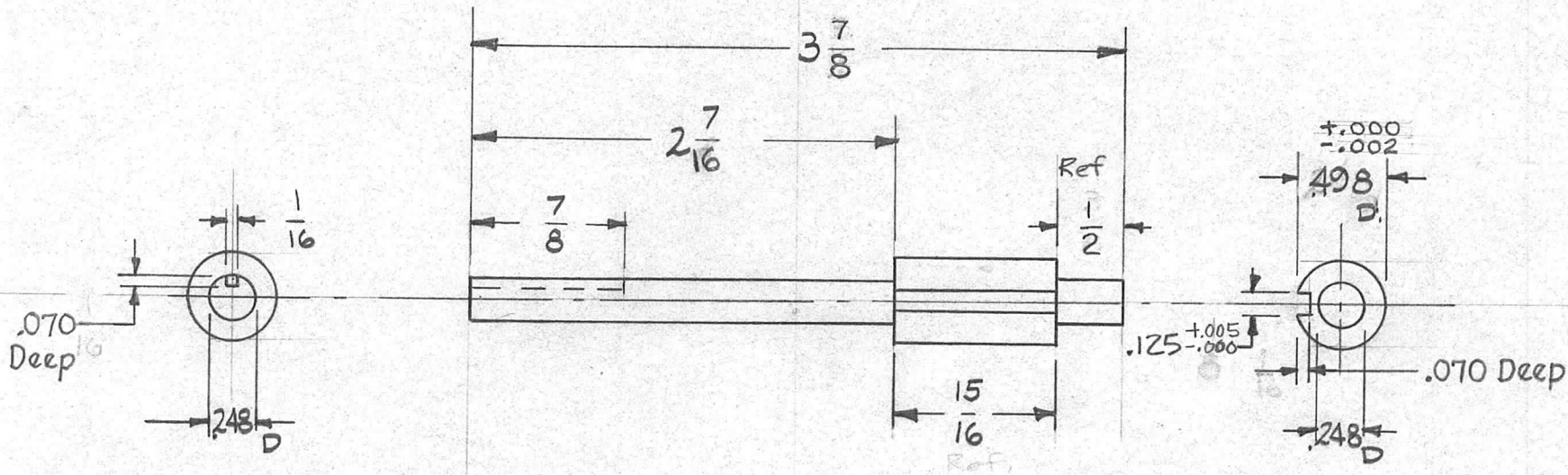


REQ. PER UNIT	USED ON			PM-625	C
	MODEL	ASS'Y. NO.	DATE		
2	GPT-40K	ΔX-209	3-16-60		



ISSUE	ITEM	CHANGED FROM	DATE	CH. NO.	DRAFTS	CHECKER	ENG. APP.	REQ. ITEM	PART NO.	DESCRIPTION	SYMBOL		
C	1	1" DIM WAS 1-1/8"	12-18-62	7891	[Signature]	[Signature]	[Signature]	1		THE TECHNICAL MATERIEL CORP. MAMARONECK, NEW YORK BUSHING, END, PA FILAMENT			
B	2	ID DIM. 3/4 WAS 25/32	5-11-61	4886	M.A.F.	[Signature]	[Signature]		STOCK SIZE				
A	1	ADDED 45° X 1/16 DP. CHAMFER 1/8 WAS 1/4 DIA. 25/32 WAS 29/32	7-18-60	2588	[Signature]	[Signature]	[Signature]		BRASS				
TOLERANCES			SCALE:					Free Turning			[Signature]	[Signature]	
DEC. DIM. ± FRAC. DIM. ± 1/64 ANGULAR DIM. ±			MAXIMUM ALLOWABLE TOLERANCES HAVE BEEN DETERMINED AND ANY DEVIATIONS WILL BE CAUSE FOR REJECTION. REMOVE ALL BURRS AND SHARP EDGES					TYPE & TEMPER	HEAT TREAT. SPEC.	DRAWN	CHECKED	FINAL APPROVAL	
								FINISH & SPEC. NO.	ELEC. DES. APP.	MECH. DES. APP.	PM-625	C	

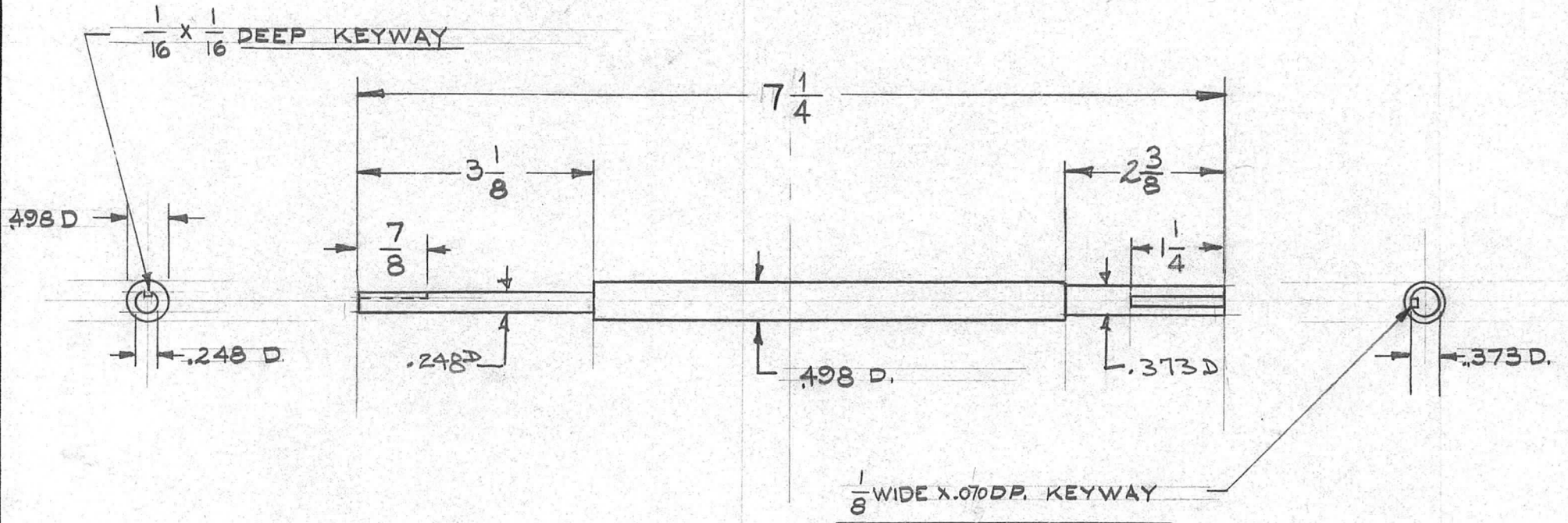
REQ. PER UNIT	USED ON			PM-626	D
	MODEL	ASS'Y. NO.	DATE		
1	AT-106	GPT-40K	3-16-60		



ISSUE	ITEM	CHANGED FROM	DATE	CH. NO.	DRAFTS	CHECKER	ENG. APP.	REQ. ITEM	PART NO.	DESCRIPTION	SYMBOL			
D	2	±TOL. ADD TO .498 D. DIM.	1-8-65	13260	JL	JL	OB			THE TECHNICAL MATERIEL CORP. MAMARONECK, NEW YORK <b>SHAFT, SWITCH</b>				
	1	U/O: MODEL WAS AT-101												
C	1	3 7/8 WAS 3 3/4, 1/2 WAS 3/8	5.25.64	11449	WB	WB	OB							
B	1	.125 <sup>+0.005</sup> / <sub>-.000</sub> WAS 1/8	1/30/64	10807	FW	T.R.	WB							
A	1	on slots .070 deep was 1/16	4/26/61	4769	JM	JCS	OB							
TOLERANCES			SCALE: FULL											
DEC. DIM. ±			MAXIMUM ALLOWABLE TOLERANCES HAVE BEEN DETERMINED AND ANY DEVIATIONS WILL BE CAUSE FOR REJECTION. REMOVE ALL BURRS AND SHARP EDGES				TYPE & TEMPER		HEAT TREAT. SPEC.	DRAWN	CHECKED	FINAL APPROVAL		
FRAC. DIM. ±							PASSIVATE							
ANGULAR DIM. ± 1/64							FINISH & SPEC. NO.		ELEC. DES. APP.	MECH. DES. APP.				
											PM-626	D		



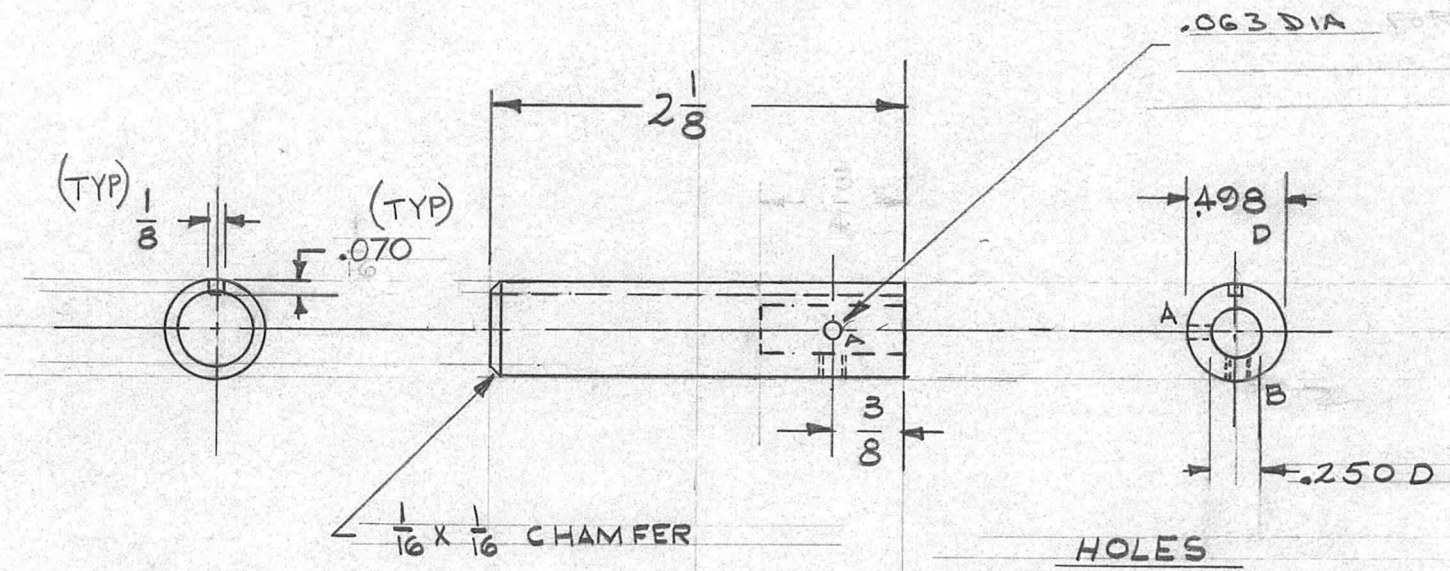
REQ. PER UNIT	USED ON			PM-627	A
	MODEL	ASS'Y. NO.	DATE		
1	AT-101	GPT-40K	3-15-60		



ISSUE	ITEM	CHANGED FROM	DATE	CH. NO.	DRAFTS	CHECKER	ENG. APP.	REQ. ITEM	PART NO.	DESCRIPTION	SYMBOL		
										THE TECHNICAL MATERIEL CORP. MAMARONECK, NEW YORK			
A	3	KEYWAY WAS 1/8 W X 1/16 DP.								SHAFT ~ CAPACITOR			
	2	2 3/8 WAS 2 1/8	12-19-60	3736	M.A.F.	JCK	OB						
	1	7 1/4 DIM WAS 1 1/2											
TOLERANCES			SCALE:					MATERIAL		10RILLO			
DEC. DIM. ±			MAXIMUM ALLOWABLE TOLERANCES HAVE BEEN DETERMINED AND ANY DEVIATIONS WILL BE CAUSE FOR REJECTION. REMOVE ALL BURRS AND SHARP EDGES					TYPE & TEMPER		DRAWN		CHECKED	
FRAC. DIM. ±								PASSIVATE		HEATTREAT. SPEC.		V6	
ANGULAR DIM. ±								FINISH & SPEC. NO.		ELEC. DES. APP		MECH. DES. APP	
										PM-627		A	

REQ. PER UNIT	USED ON		
	MODEL	ASS'Y. NO.	DATE
1	AT-101	GPT-40K	3-16-60
1	AT-103	GPT-40K(73)	10-23-61

PM-628 A

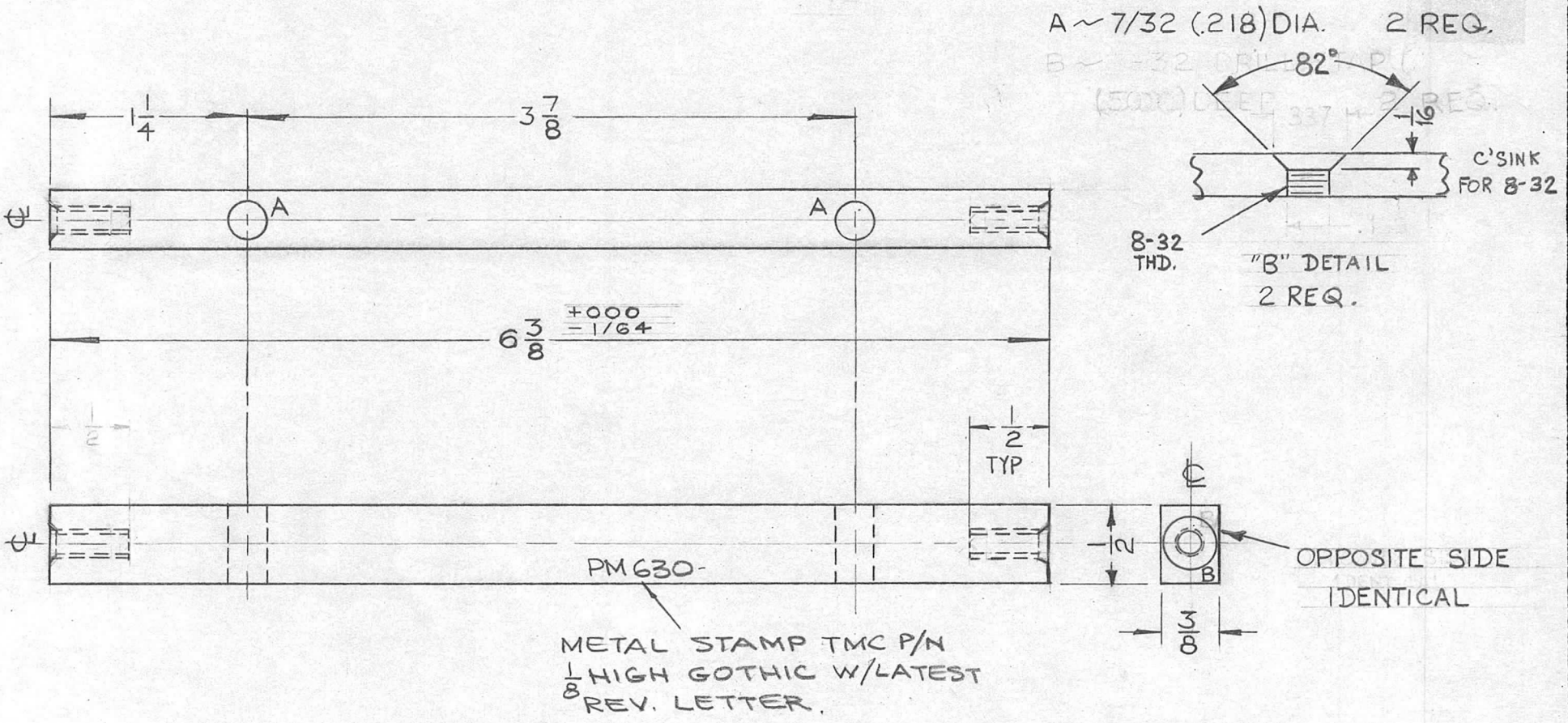


HOLES REQ.  
 A ~ (.063) D REQ. 1  
 B ~ DRILL & TAP FOR 6-32 1

ISSUE	ITEM	CHANGED FROM	DATE	CH. NO.	DRAFTS	CHECKER	ENG. APP.	REQ. ITEM	PART NO.	DESCRIPTION	SYMBOL		
										THE TECHNICAL MATERIEL CORP. MAMARONECK, NEW YORK			
A	2	DIM. $\frac{3}{4}$ DELETED	10/14/60	3198		JHE	QOB			STAINLESS STEEL	SHAFT, ADAPTER, CAPACITOR		
	1	DIM. $.070$ WAS $\frac{1}{16}$											
TOLERANCES			SCALE:					MATERIAL		DRAWN			
DEC. DIM. $\pm$ FRAC. DIM. $\pm$ ANGULAR DIM. $\pm$			MAXIMUM ALLOWABLE TOLERANCES HAVE BEEN DETERMINED AND ANY DEVIATIONS WILL BE CAUSE FOR REJECTION. REMOVE ALL BURRS AND SHARP EDGES					TYPE & TEMPER		HEATTREAT. SPEC.		CHECKED	
								PASSIVATE				FINAL APPROVAL	
								FINISH & SPEC. NO.		ELEC. DES. APP		MECH. DES. APP	
										DRILLED		QOB	
												PM-628 A	

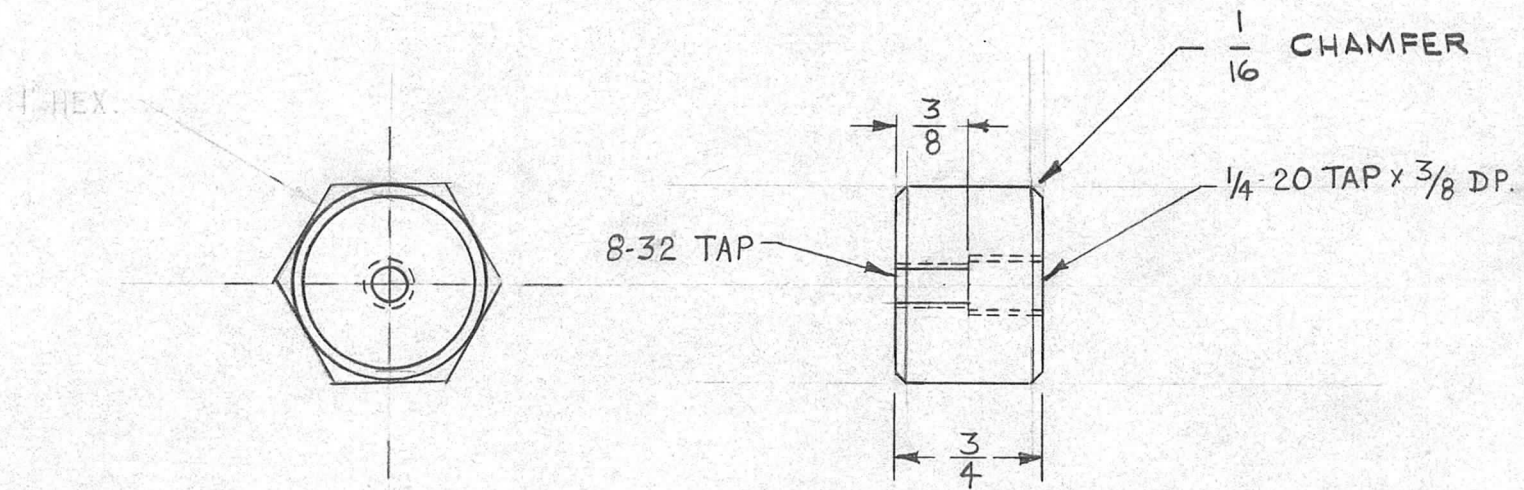


REQ. PER. UNIT	USED ON			PM-630	B
	MODEL	ASS'Y. NO.	DATE		
1	CMO-1		3/10/60		



REQ.	ITEM	PART NO.	DESCRIPTION					SYMBOL
B		RECTANGULAR ROD 3/8X1/2	THE TECHNICAL MATERIEL CORP.					
		STOCK SIZE	MAMARONECK, NEW YORK					
A	1	ALUMINUM	POWER SUPPLY					
		MATERIAL	SUPPORT BAR					
ISSUE	ITEM	CHANGED FROM	DATE	CH. NO.	DRAFTS	CHECKER	ENG. APP.	
		METAL STAMP NOTE ADDED FINISH WAS S101	2-2-66	15680	WLF	JCB	WLF	
		"B" HOLE WAS 8-32 DR. & TAP	5-8-61	4858	WLF	JCB	WLF	
TOLERANCES			SCALE:					
DEC. DIM. ±			MAXIMUM ALLOWABLE TOLERANCES HAVE BEEN DETERMINED AND ANY DEVIATIONS WILL BE CAUSE FOR REJECTION.					
FRAC. DIM. ± 1/64			REMOVE ALL BURRS AND SHARP EDGES					
ANGULAR DIM. ±								
24S-T4		#	DRAWN		CHECKED		FINAL APPROVAL	
S404 YEL. SIRIDITE			CY		WLF		APR	
FINISH & SPEC. NO.			ELEC. DES. APP		MECH. DES. APP		PM-630 B	

REQ. PER UNIT	USED ON			PM-632	B
	MODEL	ASS'Y. NO.	DATE		
1	GPT-40K	AX-209	3-14-60		



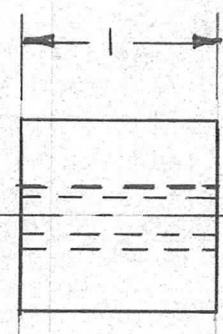
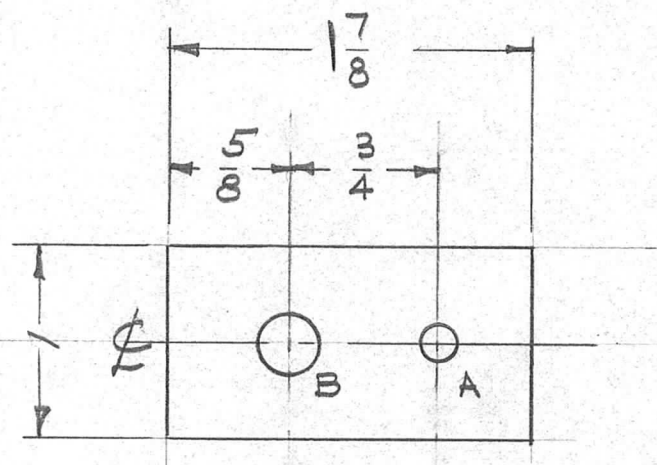
JUN 20 1960

ISSUE	ITEM	CHANGED FROM	DATE	CH. NO.	DRAFTS	CHECKER	ENG. APP.	REQ. ITEM	PART NO.	DESCRIPTION	SYMBOL	
								1" HEX ROD	THE TECHNICAL MATERIEL CORP.			
								STOCK SIZE	MAMARONECK, NEW YORK			
B	1	QUAN PER UNIT WAS 2	10/11/60	3061	<i>BBB</i>	<i>WJ</i>	<i>WJ</i>	BRASS	NUT, CONNECTING, TOR			
A	1	ADDED 1/16 CHAMFER	7-18/60	2588	<i>P</i>	<i>WJ</i>	<i>WJ</i>	MATERIAL	60 COIL TO CAPACITOR			
TOLERANCES			SCALE:					FREE TURNING		<i>WJ</i>	<i>WJ</i>	<i>WJ</i>
DEC. DIM. ±			MAXIMUM ALLOWABLE TOLERANCES HAVE BEEN DETERMINED AND ANY DEVIATIONS WILL BE CAUSE FOR REJECTION. REMOVE ALL BURRS AND SHARP EDGES					TYPE & TEMPER	HEATTREAT. SPEC.	DRAWN	CHECKED	FINAL APPROVAL
FRAC. DIM. ± 1/64								GOLD PLATE .000025				
ANGULAR DIM. ±								FINISH & SPEC. NO.	ELEC. DES. APP	MECH. DES. APP	PM-632	B



REQ. PER UNIT	USED ON			PM-633
	MODEL	ASS'Y. NO.	DATE	
1	AP-103	GPT-40K	3-30-60	

A ~ 3/16 (.187) D. 1  
 B ~ 5/16 (.312) D. 1

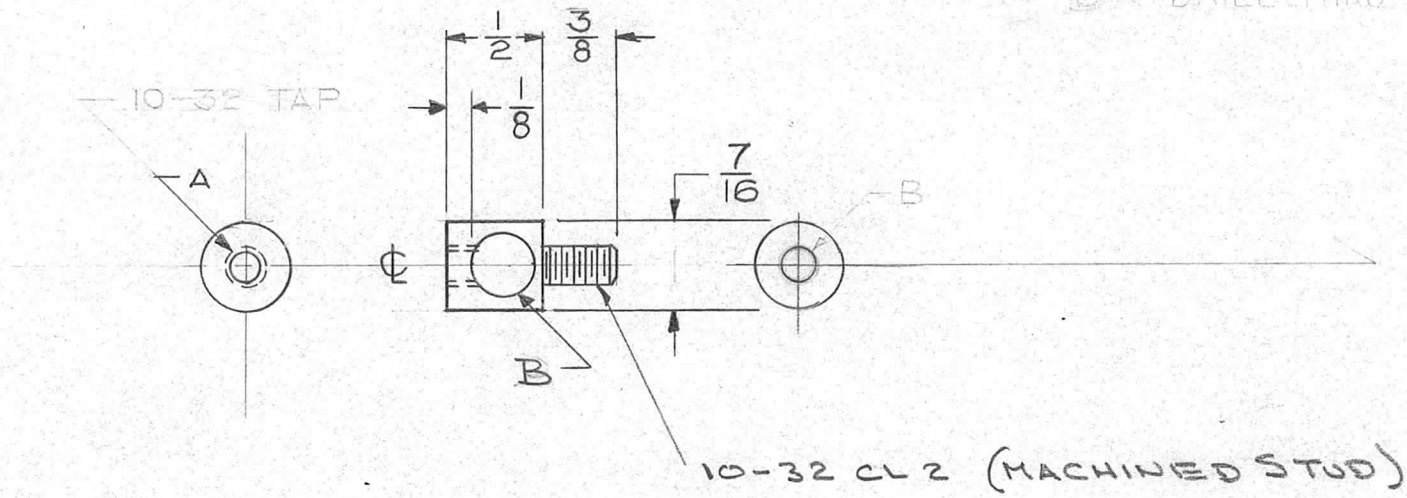


ISSUE	ITEM	CHANGED FROM	DATE	CH. NO.	DRAFTS	CHECKER	ENG. APP.	REQ.	ITEM	PART NO.	DESCRIPTION	SYMBOL	
										1 X 1 SQ.	THE TECHNICAL MATERIEL CORP. MAMARONECK, NEW YORK	BLOCK, GROUND CONTACT MOUNTING	
										ALUMINUM			
										MATERIAL			
TOLERANCES			SCALE: FULL					2024-T3			<del>FOR BLD</del>	<i>File</i>	<i>2P</i>
DEC. DIM. ± FRAC. DIM. ± 1/64 ANGULAR DIM. ±			MAXIMUM ALLOWABLE TOLERANCES HAVE BEEN DETERMINED AND ANY DEVIATIONS WILL BE CAUSE FOR REJECTION. REMOVE ALL BURRS AND SHARP EDGES					TYPE & TEMPER	HEAT TREAT. SPEC.	DRAWN	CHECKED	FINAL APPROVAL	
								5404-YEL. IRIDITE					PM-633
								FINISH & SPEC. NO.	ELEC. DES. APP.	MECH. DES. APP.			



REQ. PER UNIT	USED ON			PM-636
	MODEL	ASS'Y. NO.	DATE	
5	GPT-40K	AT-101	4-5-60	

A ~ 10-32 TAP 1 REQ  
 B - 5/16 DIA. STUD 1 REQ  
 (MACHINED) 1 REQ  
 B ~ DRILL THRU 5/16 1 REQ.



ISSUE	ITEM	CHANGED FROM	DATE	CH. NO.	DRAFTS	CHECKER	ENG. APP.	REQ.	ITEM	PART NO.	DESCRIPTION	SYMBOL	
											<b>THE TECHNICAL MATERIEL CORP.</b> MAMARONECK, NEW YORK CONNECTOR, COIL, STRAP		
										STOCK SIZE			
										B BRASS			
										MATERIAL			
										FREE MACHINING	 DRAWN	 CHECKED	 FINAL APPROVAL
										TYPE & TEMPER	HEAT TREAT. SPEC.		
										FREE MACHINING		 MECH. DES. APP	PM-636
										FINISH & SPEC. NO.	ELEC. DES. APP		

**TOLERANCES**

DEC. DIM. ±  
 FRAC. DIM. ± 1/64  
 ANGULAR DIM. ±

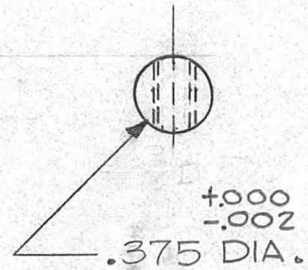
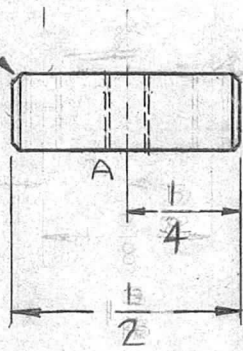
**SCALE:**

MAXIMUM ALLOWABLE TOLERANCES HAVE BEEN DETERMINED AND ANY DEVIATIONS WILL BE CAUSE FOR REJECTION. REMOVE ALL BURRS AND SHARP EDGES

REQ. PER UNIT	USED ON			PM-643	D
	MODEL	ASS'Y. NO.	DATE		
3	GPT-40K	A-1992	10-26-60		

A  $\approx$   $\frac{1}{4}$ -20 TAP 1 REQ.

45° X 1/16  
CHAMFER  
TYR

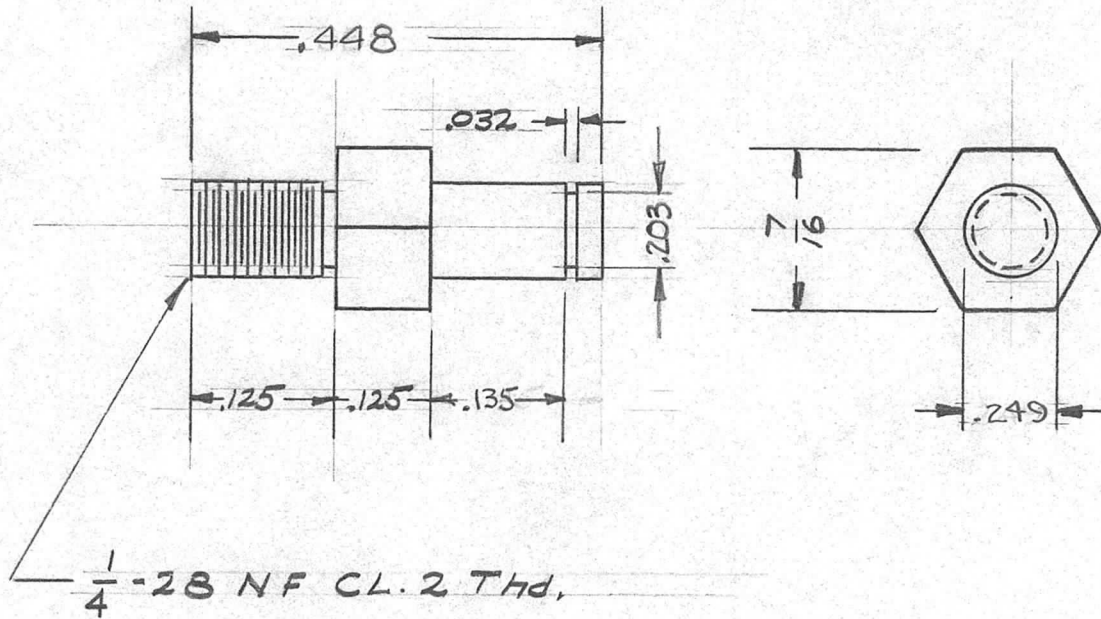


D	1	DIM 1/4 WAS 3/8 1/2 WAS 3/4	10-26-60	3208	RD	WLD	CRB
C	1	3/4 WAS 1 3/16, 3/8 WAS 19/32	10/11/60	3060	RD	WLD	
B	2	(1) 1/4-20 TAP ADDED	8 3 60	2694	CU	gcb	2B
	1	(2) 10-32 TAPS DELETED					
A	3	10-32 HOLE WAS 8-32	6/21/60	2517	CU	gcb	2B
	2	1 3/16 DIM. WAS 1 1/8					
	1	45° X 1/16 C'FER ADDED					
ISSUE	ITEM	CHANGED FROM	DATE	CH. NO.	DRAFTS	CHECKER	ENG. APP.
TOLERANCES			SCALE: (DO NOT SCALE)				
DEC. DIM. $\pm$ FRAC. DIM. $\pm$ ANGULAR DIM. $\pm$			MAXIMUM ALLOWABLE TOLERANCES HAVE BEEN DETERMINED AND ANY DEVIATIONS WILL BE CAUSE FOR REJECTION. REMOVE ALL BURRS AND SHARP EDGES				

REQ.	ITEM	PART NO.	DESCRIPTION		SYMBOL
			3/8 DIA.		
			STOCK SIZE		
			BRASS		
			MATERIAL		
			FREE TURNING		
			TYPE & TEMPER	HEAT TREAT. SPEC.	DRAWN
			FINISH & SPEC. NO.	ELEC. DES. APP	MECH. DES. APP
					2B
					PM-643
					D



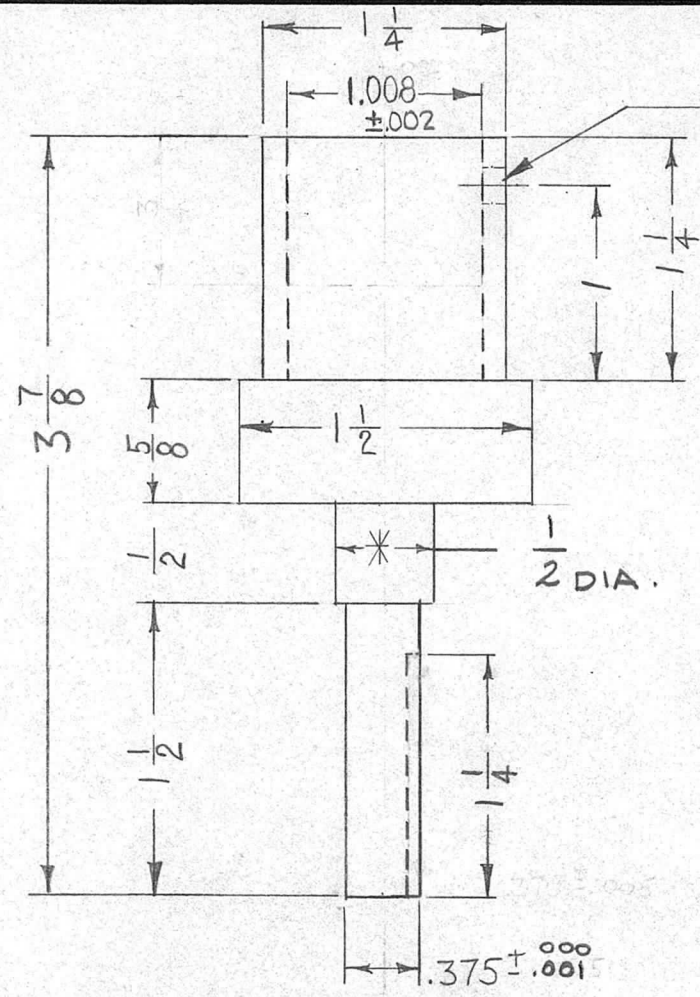
REQ. PER UNIT	USED ON			PM-649	A
	MODEL	ASS'Y. NO.	DATE		
1	CHG-1		4-26-60		



ISSUE	ITEM	CHANGED FROM	DATE	CH. NO.	DRAFTS	CHECKER	ENG. APP.	REQ. ITEM	PART NO.	DESCRIPTION	SYMBOL		
									7/16 HEX - STOCK SIZE	THE TECHNICAL MATERIEL CORP. MAMARONECK, NEW YORK			
A	1	.448 WAS .385	6 2 60	2416	Cy		<i>[Signature]</i>		BRASS	SHAFT, GEAR,			
TOLERANCES								MATERIAL					
DEC. DIM. $\pm$ .0015 FRAC. DIM. $\pm$ 1/64 ANGULAR DIM. $\pm$								SCALE: N.T.S.					
MAXIMUM ALLOWABLE TOLERANCES HAVE BEEN DETERMINED AND ANY DEVIATIONS WILL BE CAUSE FOR REJECTION. REMOVE ALL BURRS AND SHARP EDGES								FREE TURNING					
								TYPE & TEMPER		HEAT TREAT. SPEC.	DRAWN	CHECKED	FINAL APPROVAL
								FINISH & SPEC. NO.		ELEC. DES. APP	MECH. DES. APP	PM-649	A

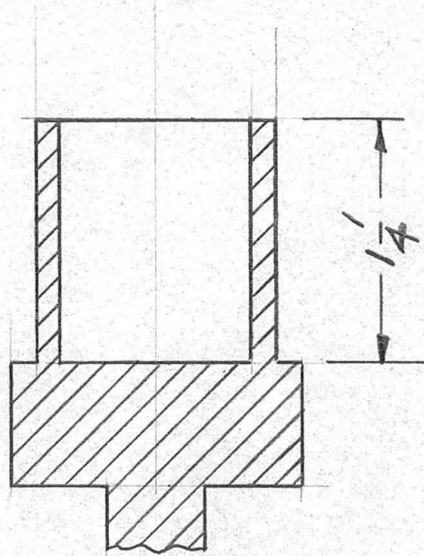


REQ. PER UNIT	USED ON			PM 637	B
	MODEL	ASS'Y. NO.	DATE		
1	GPT-40K	MODE SW	4-12-60		



PILOT HOLE FOR  
3/16 D. PIN. 1 REQ.

NOTE  
\* SNUG FIT (CLASS 4)  
TO MOUNT BEARING  
TMC # BB-120



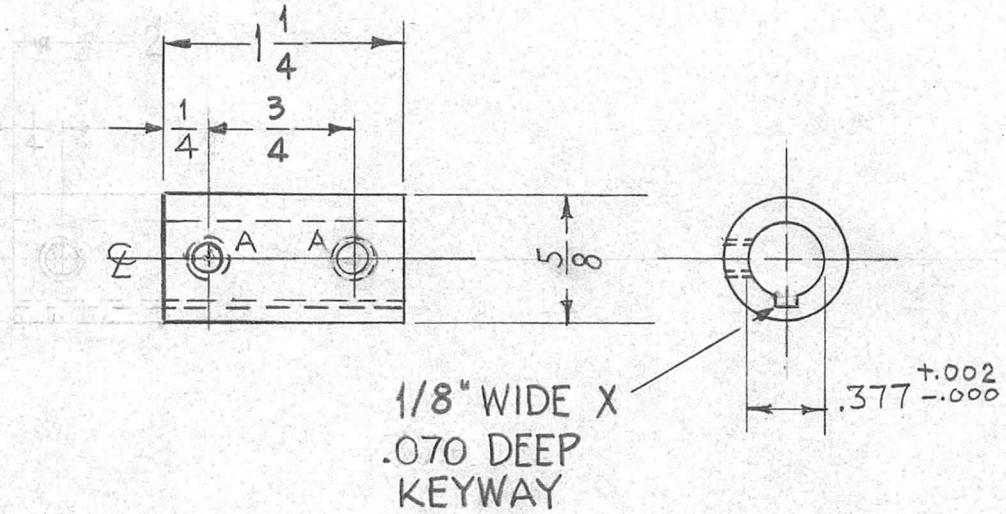
1/8 WIDE X .070 DEEP KEYWAY

REQ.	ITEM	PART NO.	DESCRIPTION				SYMBOL
			THE TECHNICAL MATERIEL CORP. MAMARONECK, NEW YORK				
B	1.008 WAS $1 \begin{smallmatrix} +.002 \\ -.000 \end{smallmatrix}$	2-20-67 17830	STAINLESS STEEL				
A	PICTORIAL DIM. CLARIFIED	7-19 2601	SHAFT BEARING				
			MODE SW.				
ISSUE	ITEM	CHANGED FROM	DATE	CH. NO.	DRAFTS	CHECKER	ENG. APP.
TOLERANCES			SCALE:				
DEC. DIM. $\pm$ FRAC. DIM. $\pm$ ANGULAR DIM. $\pm$			MAXIMUM ALLOWABLE TOLERANCES HAVE BEEN DETERMINED AND ANY DEVIATIONS WILL BE CAUSE FOR REJECTION. REMOVE ALL BURRS AND SHARP EDGES				
TYPE & TEMPER			HEATTREAT. SPEC.		DRAWN	CHECKED	FINAL APPROVAL
FINISH & SPEC. NO.			ELEC. DES. APP		MECH. DES. APP		
							PM 637
							B

REQ. PER UNIT	USED ON			PM-638	B
	MODEL	ASS'Y. NO.	DATE		
1	GPT-40K	MODE SW.	4-12-60		

A - DR. & TAP FOR 10-32

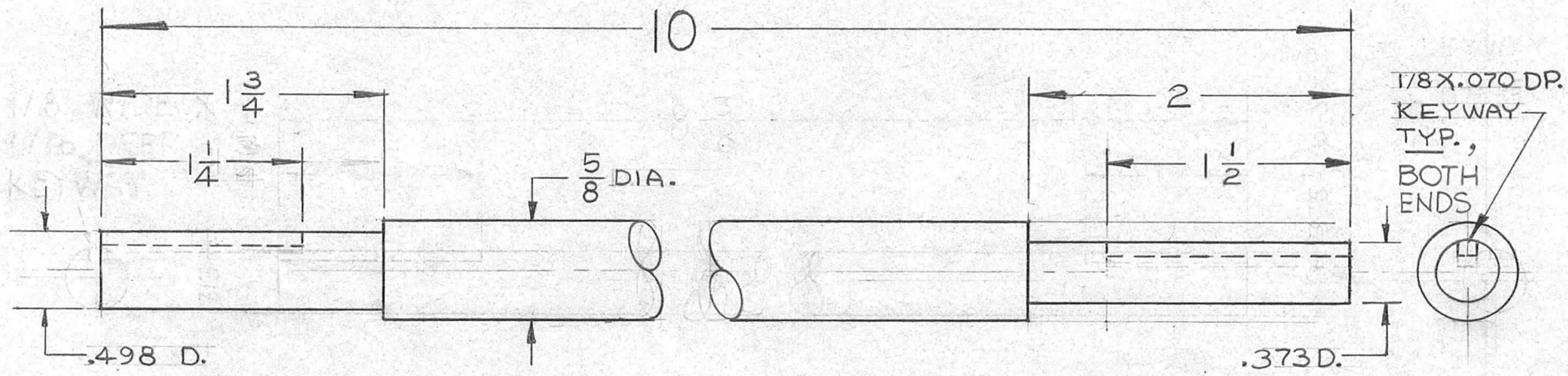
2 REQ.



ISSUE	ITEM	CHANGED FROM	DATE	CH. NO.	DRAFTS	CHECKER	ENG. APP.	REQ.	ITEM	PART NO.	DESCRIPTION	SYMBOL				
									5/8		THE TECHNICAL MATERIEL CORP. MAMARONECK, NEW YORK					
B	1	Keyway was 1/16 Deep	3-1-61	4269	RU	gcb	QTB		STOCK SIZE							
A	1	FINISH Spec. ADDED	9-8-60	2916	RU		QTB		BRASS		COUPLING					
									MATERIAL		MODE SW.					
TOLERANCES			SCALE:													
DEC. DIM. ±			MAXIMUM ALLOWABLE TOLERANCES HAVE BEEN DETERMINED AND ANY DEVIATIONS WILL BE CAUSE FOR REJECTION. REMOVE ALL BURRS AND SHARP EDGES					TYPE & TEMPER		HEATTREAT. SPEC.	DRAWN	CHECKED	FINAL APPROVAL			
FRAC. DIM. ± 1/64								NICKEL PLATE								
ANGULAR DIM. ±								.0005 S-135								
								FINISH & SPEC. NO.		ELEC. DES. APP	MECH. DES. APP	PM-638	B			



REQ. PER UNIT	USED ON			PM-639	A
	MODEL	ASS'Y. NO.	DATE		
1	GPT-40K	MODE SW.	4-12-60		

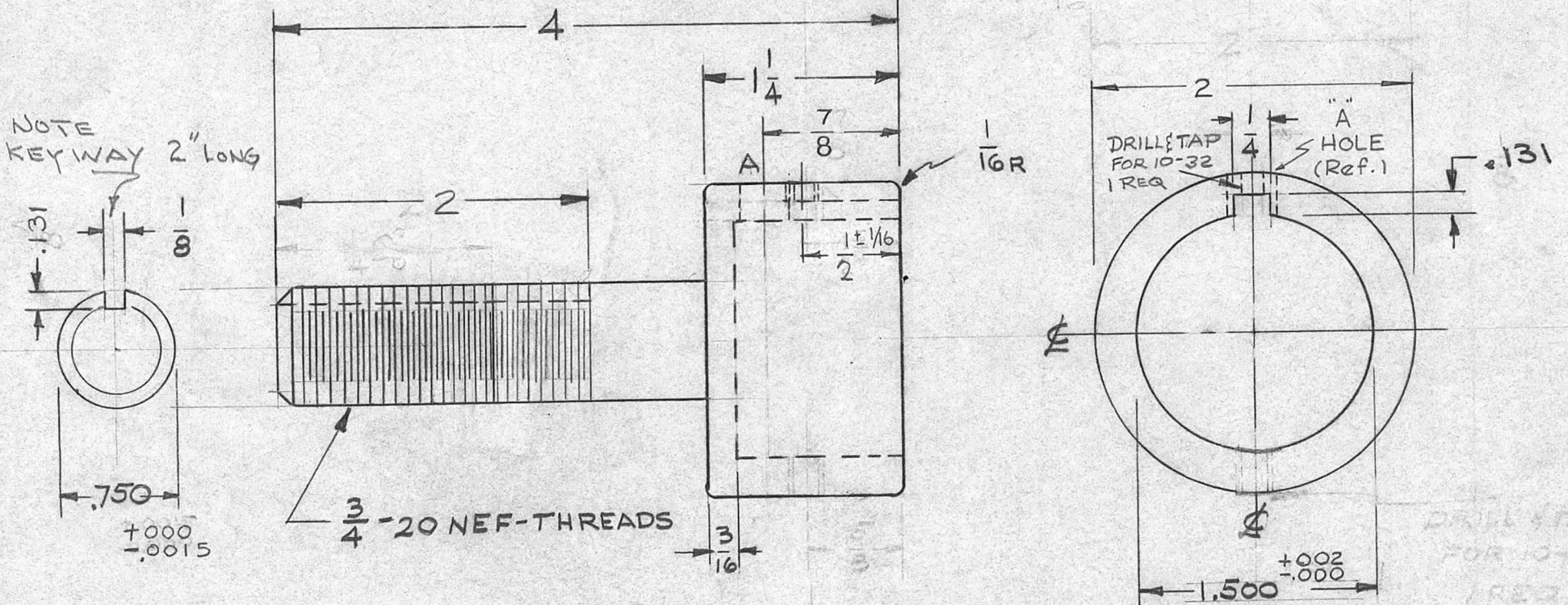


REQ.	ITEM	PART NO.	DESCRIPTION				SYMBOL
			THE TECHNICAL MATERIEL CORP. MAMARONECK, NEW YORK				
			STAINLESS STEEL				
			SHAFT, VERTICAL MODE SW.				
A	1	REDESIGNED	7-28-60	2656	WJ	JCB	DB
ISSUE	ITEM	CHANGED FROM	DATE	CH. NO.	DRAFTS	CHECKER	ENG. APP.
TOLERANCES			SCALE:				
DEC. DIM. ±			MAXIMUM ALLOWABLE TOLERANCES HAVE BEEN DETERMINED AND ANY DEVIATIONS WILL BE CAUSE FOR REJECTION.				
FRAC. DIM. ± 1/64			REMOVE ALL BURRS AND SHARP EDGES				
ANGULAR DIM. ±							
TYPE & TEMPER		HEATTREAT. SPEC.	DRAWN		CHECKED	FINAL APPROVAL	
FINISH & SPEC. NO.		ELEC. DES. APP	MECH. DES. APP		PM-639		
					A		



REQ. PER UNIT	USED ON		
	MODEL	ASS'Y. NO.	DATE
1	GPT-40K	AX-209	4-14-60
1	GPT-40KC 3 As-123	AX-353	12-23-63
1	GPT-40KC 4 As-125	AX-458	12-23-63

PM-640 H



A  $\frac{5}{16}$  DIA. HOLE 1 REQD

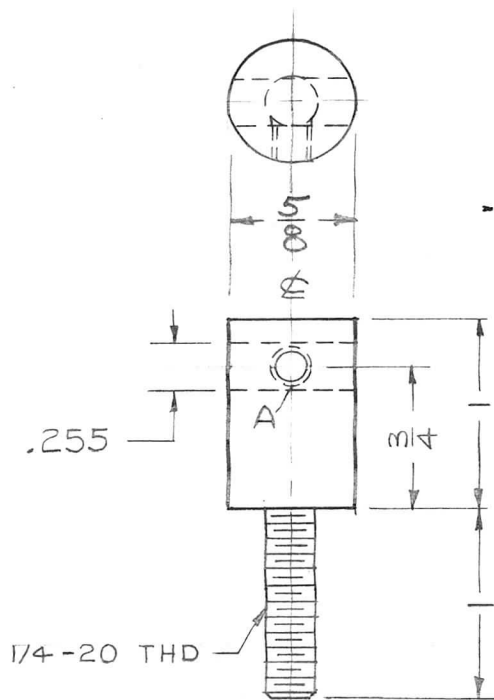
H	1	ADDED 1/16 TOL TO 1/2 DIM	8-10-66	16745	RME	JCB	QB
G	1	PICT: 1/2 DIM. WAS 5/8	1-8-65	13259	RL	JCB	QB
F	1	DWG UPDATED	12/23/63	10642	RL	JCB	QB
E	1	KEYWAY CLARIFIED	7-12-62	6884	JCB	JCB	QB
D	1	DRILL TAP 10-32 RELOCATED	9-28-60	3028	RU	JCB	QB

ISSUE	ITEM	CHANGED FROM	DATE	CH. NO.	DRAFTS	CHECKER	ENG. APP.
C	1	2 Thread Length was 1 3/8	9-8-60	29	15	RU	JCB QB
B	3	1 3/8 DIM. WAS 1 1/4 DIM	8	2	6	JCB	QB
	2	TOLERANCES ADDED	3	26	76	JCB	QB
A	1	'A' HOLE ADDED	60			JCB	QB
A		.131 was 1/8	6/28/60	2586	JCB	JCB	QB
TOLERANCES			SCALE: FULL				

REQ.	ITEM	PART NO.	DESCRIPTION	SYMBOL
			THE TECHNICAL MATERIEL CORP. MAMARONECK, NEW YORK	
			STOCK SIZE BRASS ROD FREE TURNING	
			MATERIAL	
			HUB, SHAFT, TOP	
			TYPE & TEMPER RHODIUM PLATE .000025	
			FINISH & SPEC. NO.	
			DRAWN JCB	CHECKED JCB
			FINAL APPROVAL QB	
			ELEC. DES. APP. MECH. DES. APP.	

PM-640 H

REQ. PER UNIT	USED ON			PM-646
	MODEL	ASS'Y. NO.	DATE	
2	AX-209	40K	4-25-60	



A ✓ 10-32 DR. TAP 1 REQ.  
AS SHOWN

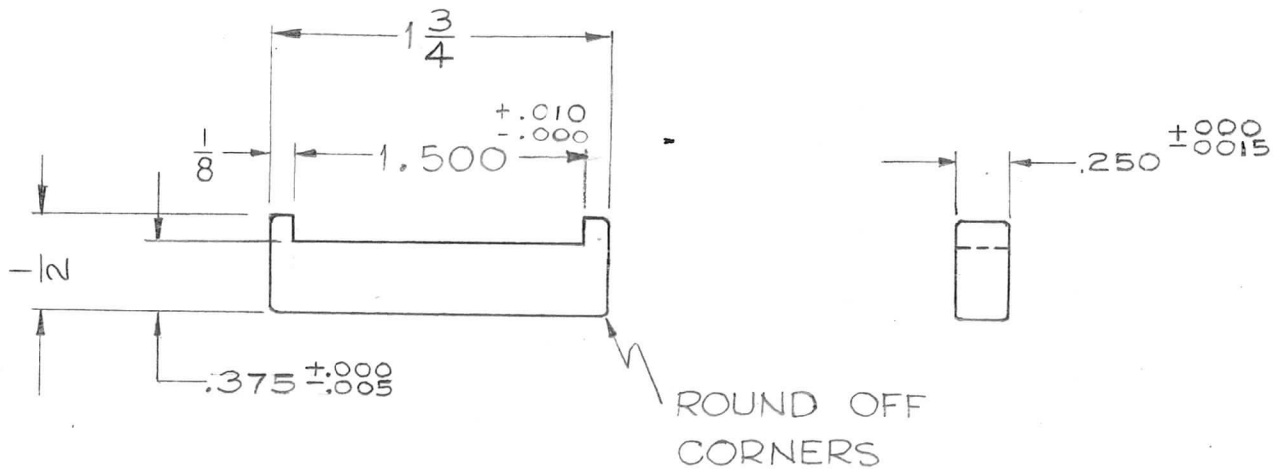
ISSUE	ITEM	CHANGED FROM	DATE	CH. NO.	DRAFTS	CHECKER	ENG. APP.	REQ.	ITEM	PART NO.	DESCRIPTION	SYMBOL
											THE TECHNICAL MATERIEL CORP. MAMARONECK, NEW YORK	
										STOCK SIZE	POST, SPARK ROD	
										BRASS		
										MATERIAL		
										FREE TURNING	CY	DB
										TYPE & TEMPER	CHECKED	FINAL APPROVAL
										HEAT TREAT. SPEC.		
										NICKEL PLATED		
										S-135 .0002		
										FINISH & SPEC. NO.	ELEC. DES. APP.	MECH. DES. APP.
												PM-646

DEC. DIM. ±  
FRAC. DIM. ± 1/64  
ANGULAR DIM. ±

SCALE: FULL  
MAXIMUM ALLOWABLE TOLERANCES HAVE BEEN DETERMINED AND ANY DEVIATIONS WILL BE CAUSE FOR REJECTION. REMOVE ALL BURRS AND SHARP EDGES

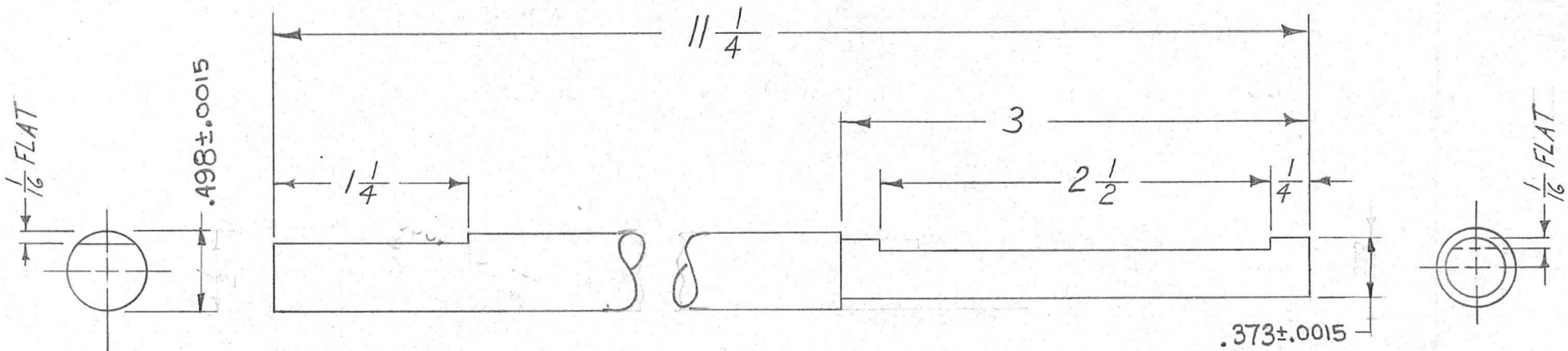


REQ. PER UNIT	USED ON			PM-653	A
	MODEL	ASS'Y. NO.	DATE		
1	GPT-40K	AX-209	7-1-60		



ISSUE	ITEM	CHANGED FROM	DATE	CH. NO.	DRAFTS	CHECKER	ENG. APP.	REQ.	ITEM	PART NO.	DESCRIPTION	SYMBOL					
										1/4 X 1/2	THE TECHNICAL MATERIEL CORP. MAMARONECK, NEW YORK	KEY, SHAFT, BAND SWITCH					
										STOCK SIZE							
A	1	KEY REDESIGNED	8-3-60	2685	02	JCB	JCB			BRASS							
TOLERANCES			SCALE: FULL~DO NOT SCALE~					TYPE & TEMPER		HEAT TREAT. SPEC.		J.C. Biele					
DEC. DIM. ± AS NOTED			MAXIMUM ALLOWABLE TOLERANCES HAVE BEEN DETERMINED AND ANY DEVIATIONS WILL BE CAUSE FOR REJECTION. REMOVE ALL BURRS AND SHARP EDGES							DRAWN							
FRAC. DIM. ±										CHECKED				FINAL APPROVAL			
ANGULAR DIM. ±																	
										FINISH & SPEC. NO.	ELEC. DES. APP	MECH. DES. APP	PM-653	A			

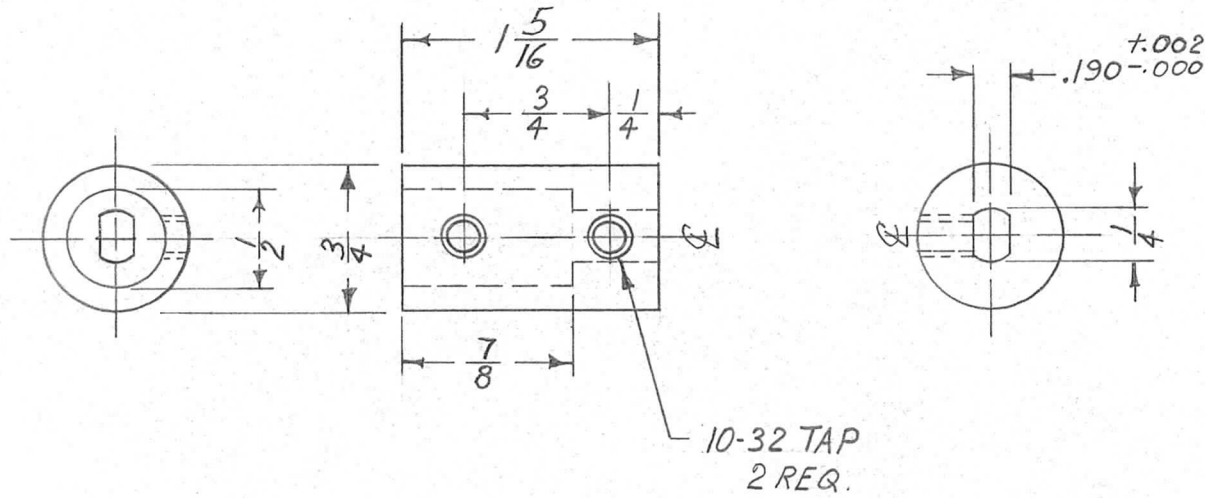
REQ. PER UNIT	USED ON			PM-657	A
	MODEL	ASS'Y. NO.	DATE		
1	GPT-40K		7-27-60		



REQ.	ITEM	PART NO.	DESCRIPTION				SYMBOL
		<i>H</i>	THE TECHNICAL MATERIEL CORP.				
		STOCK SIZE	MAMARONECK, NEW YORK				
		STAINLESS STEEL	SHAFT, MODE SWITCH				
		MATERIAL					
A		GRADE 303	<i>PT</i>	<i>H</i>	<i>Q</i>		
		HEAT TREAT. SPEC.					
		PASSIVATE					
		FINISH & SPEC. NO.					
			ELEC. DES. APP	MECH. DES. APP			
ISSUE ITEM		CHANGED FROM	DATE	CH. NO.	DRAFTS	CHECKER	ENG. APP.
A		.498 WAS 1/2. ADDED TOL. TO .373 & GRADE TO MAL. CHART	6-29-62	6822	R.T.	<i>H</i>	<i>Q</i>
TOLERANCES			SCALE: FULL				
DEC. DIM. ±			MAXIMUM ALLOWABLE TOLERANCES HAVE BEEN DETERMINED AND ANY DEVIATIONS WILL BE CAUSE FOR REJECTION: REMOVE ALL BURRS AND SHARP EDGES				
FRAC. DIM. ± 1/64							
ANGULAR DIM. ±							
			DRAWN		CHECKED		FINAL APPROVAL
			<i>PT</i>		<i>H</i>		<i>Q</i>
					PM-657		A



REQ. PER. UNIT	USED ON			PM-658
	MODEL	ASS'Y. NO.	DATE	
1	GPT-40K		7-27-60	

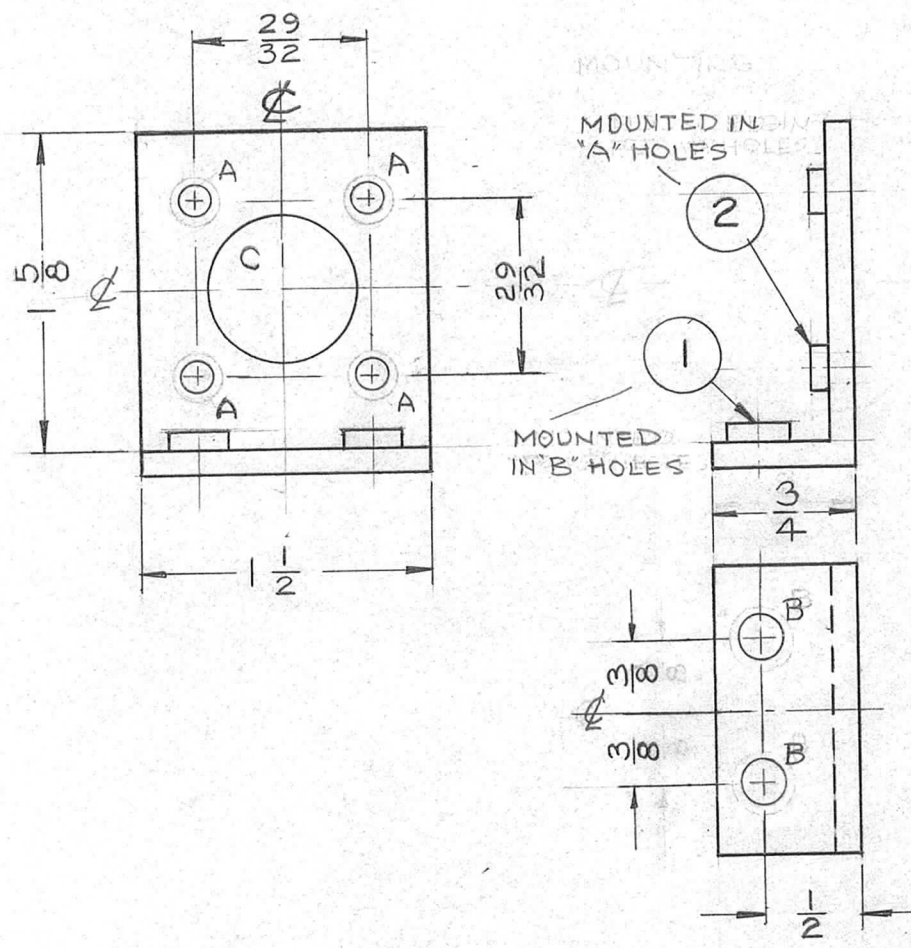


ISSUE	ITEM	CHANGED FROM	DATE	CH. NO.	DRAFTS	CHECKER	ENG. APP.	REQ. ITEM	PART NO.	DESCRIPTION	SYMBOL	
								3/4		THE TECHNICAL MATERIEL CORP. MAMARONECK, NEW YORK COUPLER-HORIZONTAL SHAFT		
								STOCK SIZE				
								BRASS				
								MATERIAL				
								ROUND				
								TYPE & TEMPER	HEATTREAT. SPEC.	DRAWN	CHECKED	FINAL APPROVAL
								0005 NICKEL PLATE				PM-658
								FINISH & SPEC. NO.		ELEC. DES. APP.	MECH. DES. APP.	

DEC. DIM. ±  
 FRAC. DIM. ± 1/64  
 ANGULAR DIM. ±

SCALE: FULL  
 MAXIMUM ALLOWABLE TOLERANCES HAVE BEEN DETERMINED AND ANY DEVIATIONS WILL BE CAUSE FOR REJECTION.  
 REMOVE ALL BURRS AND SHARP EDGES

REQ. PER UNIT	USED ON			PM-659
	MODEL	ASS'Y. NO.	DATE	
1	DDR-6		8-9-60	



A  $\approx$  .161 DIA. 4 REQ.  
    .164  
 B  $\approx$  .221 DIA. 2 REQ.  
    .224  
 C  $\approx$  3/4 DIA. 1 REQ.

REF. MS-1987 SHEET 2

4	2	NT-129-440-4	SWAGE, NUT	
2	1	NT-129-832-4	SWAGE, NUT	
REQ.	ITEM	PART NO.	DESCRIPTION	SYMBOL
1/8 THK.			THE TECHNICAL MATERIEL CORP.	
STOCK SIZE			MAMARONECK, NEW YORK	
ALUMINUM			BLOWER, PLUG BRACKET	
MATERIAL				
5052-H32			<i>[Signature]</i>	<i>[Signature]</i>
TYPE & TEMPER	HEAT TREAT. SPEC.	DRAWN	CHECKED	FINAL APPROVAL
5404 YELL. IRIDITE			<i>[Signature]</i>	PM-659
FINISH & SPEC. NO.		ELEC. DES. APP.	MECH. DES. APP.	

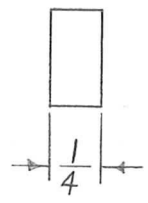
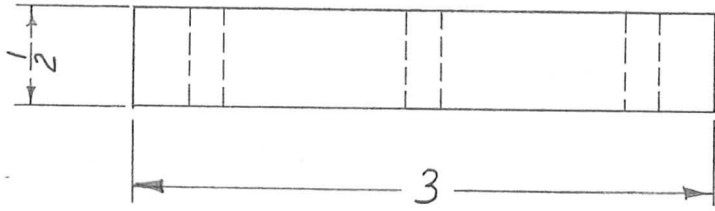
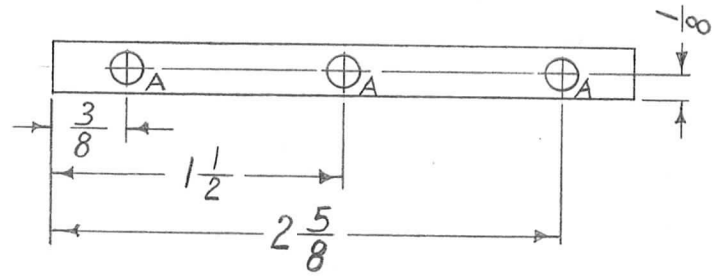
ISSUE	ITEM	CHANGED FROM	DATE	CH. NO.	DRAFTS	CHECKER	ENG. APP.
TOLERANCES			SCALE: FULL				
DEC. DIM. $\pm$			MAXIMUM ALLOWABLE TOLERANCES HAVE BEEN DETERMINED AND ANY DEVIATIONS WILL BE CAUSE FOR REJECTION. REMOVE ALL BURRS AND SHARP EDGES				
FRAC. DIM. $\pm$ 1/64							
ANGULAR DIM. $\pm$							



REQ. PER. UNIT	USED ON			PM-663
	MODEL	ASS'Y. NO.	DATE	
1	CHG-1		9-14-60	

A ~  $\frac{5}{32}$  DIA.

3 REQ.



ISSUE	ITEM	CHANGED FROM	DATE	CH. NO.	DRAFTS	CHECKER	ENG. APP.	REQ.	ITEM	PART NO.	DESCRIPTION	SYMBOL	
										3 X 1/2 X 1/4	THE TECHNICAL MATERIEL CORP. MAMARONECK, NEW YORK BAR, MOUNTING, FINGER STOCK		
										STOCK SIZE			
										ALUMINUM			
										MATERIAL			
										5052-H32			
										TYPE & TEMPER	CHECKED		
										HEATTREAT. SPEC.		FINAL APPROVAL	
										S404 YELL. IRIDITE		PM-663	
										FINISH & SPEC. NO.	ELEC. DES. APP	MECH. DES. APP	

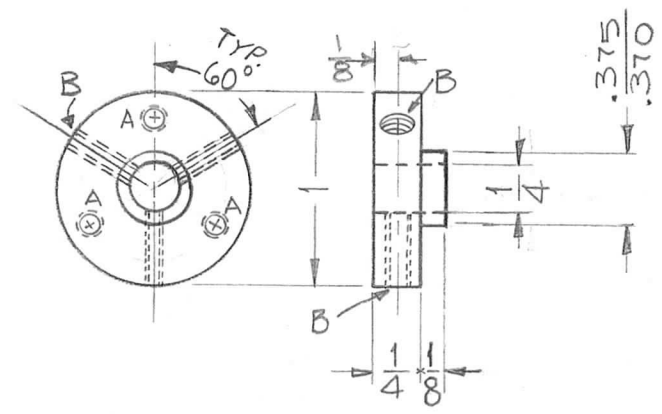
TOLERANCES  
 DEC. DIM. ±  
 FRAC. DIM. ± 1/64  
 ANGULAR DIM. ±

SCALE: FULL  
 MAXIMUM ALLOWABLE TOLERANCES HAVE BEEN DETERMINED AND ANY DEVIATIONS WILL BE CAUSE FOR REJECTION.  
 REMOVE ALL BURRS AND SHARP EDGES

DRAWN: [Signature]  
 CHECKED: [Signature]  
 FINAL APPROVAL: [Signature]

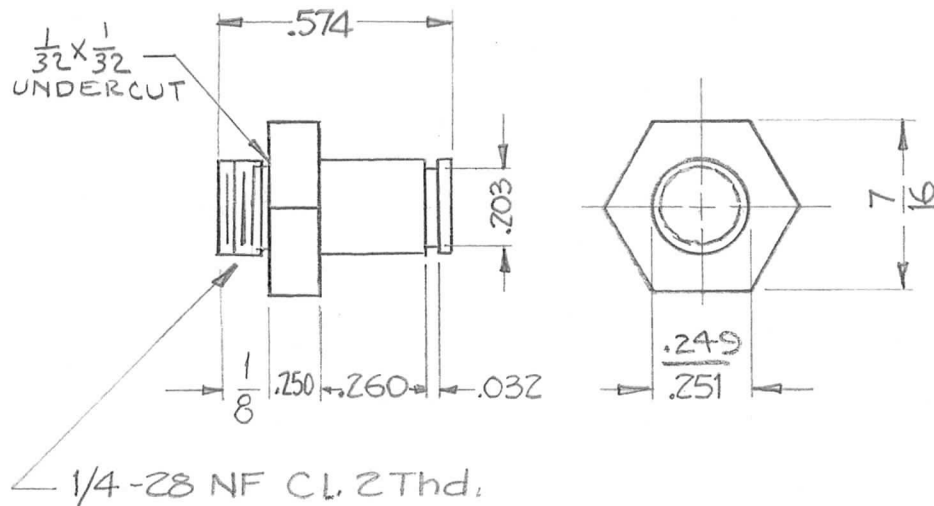
REQ. PER. UNIT	USED ON			PM 664 C
	MODEL	ASSY. NO.	DATE	
Z	CHG-1	GEAR, ASSY	9-16-60	

HOLES  
 A ~ Dr. & Tap for 6-32 on 3/8". 120° Apart 3 Req.  
 B ~ Dr. & Tap for 6-32 - 3 Req. 120° Apart



ISSUE	ITEM	CHANGED FROM	DATE	CH. NO.	DRAFTS	CHECKER	ENG. APP.	REQ.	ITEM	PART NO.	DESCRIPTION	SYMBOL	
C		ADDED 1 "B" HOLE; 60° WAS 45°	3/28/66	16023	HCA						THE TECHNICAL MATERIEL CORP. MAMARONECK, NEW YORK	HUB, DIAL GEAR	
B	2	DIM 1/8 WAS 1/4.	11/21/60	3530	DPM	JCP							
	1	REQ. PER UNIT WAS 1.											
A	1	.375 .370 DIA. WAS 3/8	9/29/60	3106	cy	file							
TOLERANCES			SCALE:					FREE TURNING			DRM	HQ	
DEC. DIM. ±			MAXIMUM ALLOWABLE TOLERANCES HAVE BEEN DETERMINED AND ANY DEVIATIONS WILL BE CAUSE FOR REJECTION. REMOVE ALL BURRS AND SHARP EDGES					TYPE & TEMPER	HEATTREAT. SPEC.	DRAWN	CHECKED	FINAL APPROVAL	
FRAC. DIM. ± 1/64													
ANGULAR DIM. ±								FINISH & SPEC. NO.		ELEC. DES. APP		MECH. DES. APP	

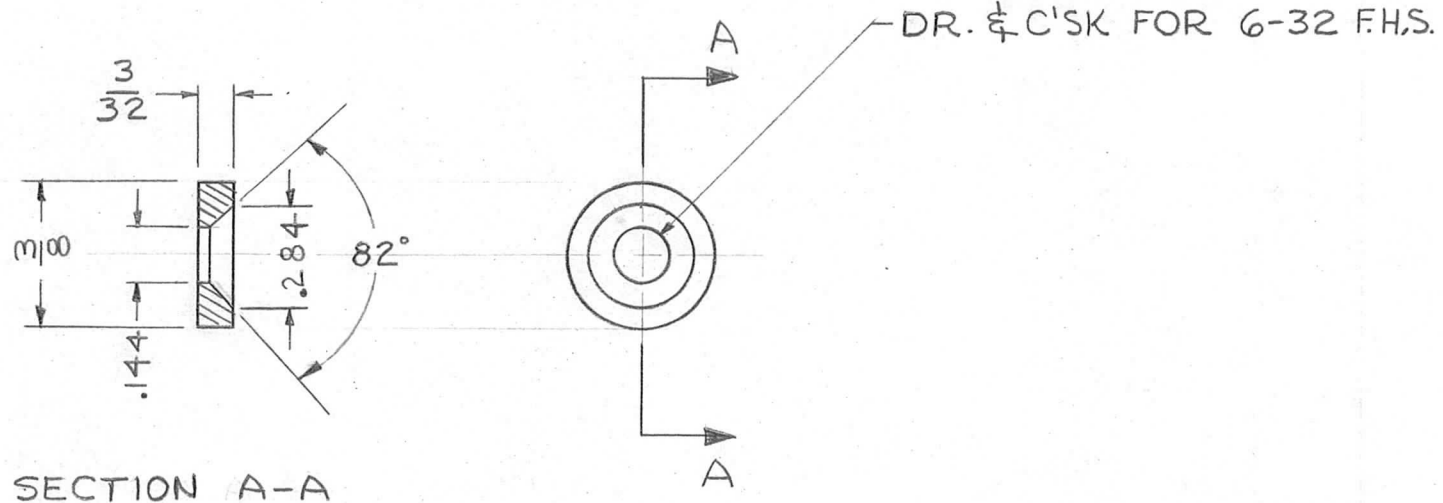
REQ. PER. UNIT	USED ON			PM-665	B
	MODEL	ASS'Y. NO.	DATE		
1	CHG-1	GEAR ASS'Y	9-16-60		



ISSUE	ITEM	CHANGED FROM	DATE	CH. NO.	DRAFTS	CHECKER	ENG. APP.	REQ. ITEM	PART NO.	DESCRIPTION	SYMBOL	
									7/16 HEX	THE TECHNICAL MATERIEL CORP. MAMARONECK, NEW YORK SHAFT, GEAR		
B	1	DIM. .250 WAS .125	11-29-60	3585					STOCK SIZE			
A	1	UNDERCUT ADDED	9-29-60	3106					BRASS			
TOLERANCES			SCALE: 2X					FREE TURING				
DEC. DIM. ± .0015 FRAC. DIM. ± 1/64 ANGULAR DIM. ±			MAXIMUM ALLOWABLE TOLERANCES HAVE BEEN DETERMINED AND ANY DEVIATIONS WILL BE CAUSE FOR REJECTION. REMOVE ALL BURRS AND SHARP EDGES					TYPE & TEMPER	HEAT TREAT. SPEC.	DRAWN	CHECKED	FINAL APPROVAL
								FINISH & SPEC. NO.	ELEC. DES. APP	MECH. DES. APP	PM-665	B



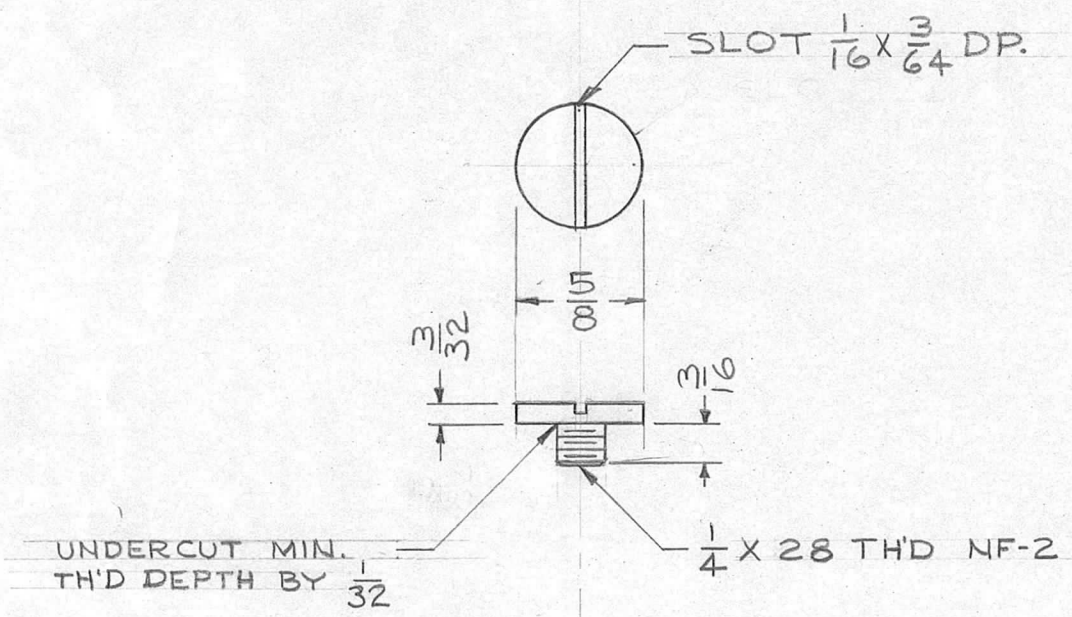
REQ. PER. UNIT	USED ON			PM-668
	MODEL	ASS'Y. NO.	DATE	
1	CHG-1	GEAR, ASSY	9-28-60	



ALTERNATE MFG. METHOD  
TMC PART #TE-117-26 MAY  
BE MODIFIED AS SHOWN

							REQ. ITEM	PART NO.	DESCRIPTION			SYMBOL	
								3/8 O.D	THE TECHNICAL MATERIEL CORP.				
								STOCK SIZE	MAMARONECK, NEW YORK				
								BRASS	STOP SPACER, GEAR				
								MATERIAL					
ISSUE	ITEM	CHANGED FROM	DATE	CH. NO.	DRAFTS	CHECKER	ENG. APP.	1/2 H		CW	Jde	QJE	
TOLERANCES			SCALE: 2-1				TYPE & TEMPER		HEAT TREAT. SPEC.	DRAWN	CHECKED	FINAL APPROVAL	
DEC. DIM. ±			MAXIMUM ALLOWABLE TOLERANCES HAVE BEEN DETERMINED AND ANY DEVIATIONS WILL BE CAUSE FOR REJECTION. REMOVE ALL BURRS AND SHARP EDGES				NICKEL PLATED					PM-668	
FRAC. DIM. ± 1/64							FINISH & SPEC. NO.		ELEC. DES. APP	MECH. DES. APP			
ANGULAR DIM. ±													

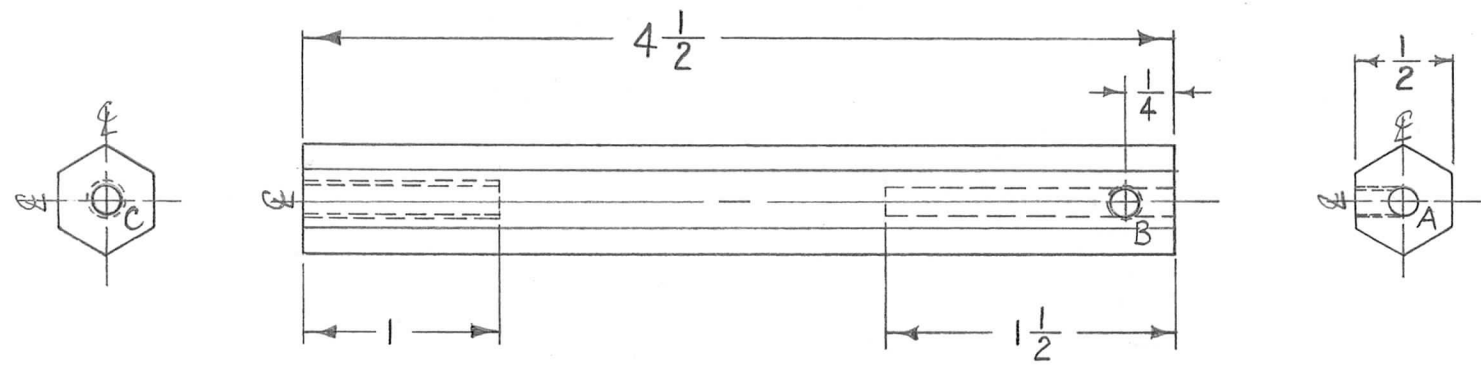
REQ. PER UNIT	USED ON			PM-669
	MODEL	ASS'Y. NO.	DATE	
1	CHG-1	GEAR PL	9-28-60	



				REQ. ITEM	PART NO.	DESCRIPTION	SYMBOL
						THE TECHNICAL MATERIEL CORP.	
						MAMARONECK, NEW YORK	
					STOCK SIZE	STOP SCREW, GEAR	
					BRASS		
					MATERIAL		
ISSUE	ITEM	CHANGED FROM	DATE	CH. NO.	DRAFTS	CHECKER	ENG. APP.
TOLERANCES			SCALE: #				
DEC. DIM. ±			MAXIMUM ALLOWABLE TOLERANCES HAVE BEEN DETERMINED AND ANY DEVIATIONS WILL BE CAUSE FOR REJECTION. REMOVE ALL BURRS AND SHARP EDGES				
FRAC. DIM. ± 1/64							
ANGULAR DIM. ±							
				HALF HARD		CU	Wde
				TYPE & TEMPER	HEAT TREAT. SPEC.	DRAWN	CHECKED
				NICKEL PLATED .0002			
				FINISH & SPEC. NO.		ELEC. DES. APP	MECH. DES. APP
							PM-669

REQ. PER. UNIT	USED ON			PM-672
	MODEL	ASSY. NO.	DATE	
1	ACU		10-20-60	

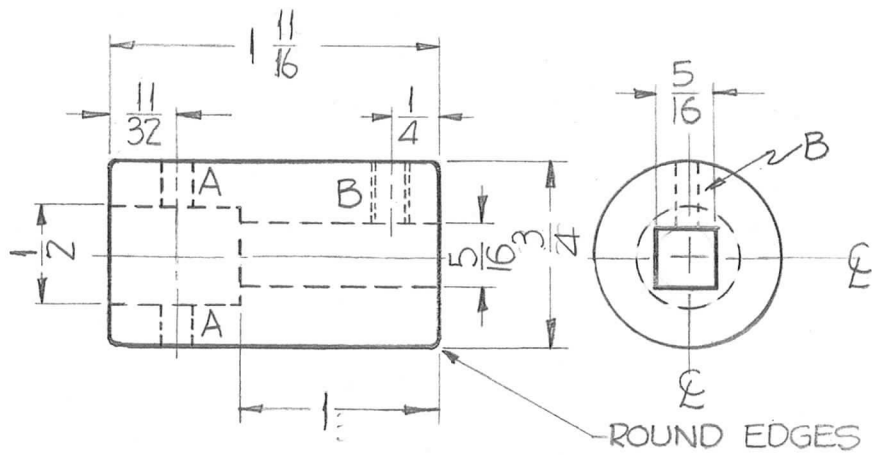
- A -  $\frac{9}{64}$  DIA. 1 REQ.
- B - DR. & TAP FOR 8-32 1 REQ.
- C - DR. & TAP FOR 10-32 1 REQ.



							REQ. ITEM	PART NO.	DESCRIPTION	SYMBOL	
							1/2 HEX.		THE TECHNICAL MATERIEL CORP. MAMARONECK, NEW YORK SUPPORT, SPARK GAP.		
							STOCK SIZE				
							ALUMINUM				
							MATERIAL				
ISSUE	ITEM	CHANGED FROM	DATE	CH. NO.	DRAFTS	CHECKER	ENG. APP.	5052-H32			
TOLERANCES			SCALE:								
DEC. DIM. ±			MAXIMUM ALLOWABLE TOLERANCES HAVE BEEN DETERMINED AND ANY DEVIATIONS WILL BE CAUSE FOR REJECTION. REMOVE ALL BURRS AND SHARP EDGES								
FRAC. DIM. ± 1/64											
ANGULAR DIM. ±											
							TYPE & TEMPER	HEAT TREAT. SPEC.	DRAWN	CHECKED	FINAL APPROVAL
							3404 YELL. IRIDITE				PM-672
							FINISH & SPEC. NO.	ELEC. DES. APP.	MECH. DES. APP.		



REQ. PER. UNIT	USED ON			PM-673
	MODEL	ASS'Y. NO.	DATE	
1	GPT-40K		11-9-60	



HOLES ~ REQ  
 A ~ .125" DIA. 2  
 B ~ DR. & TAP FOR 10-32 1

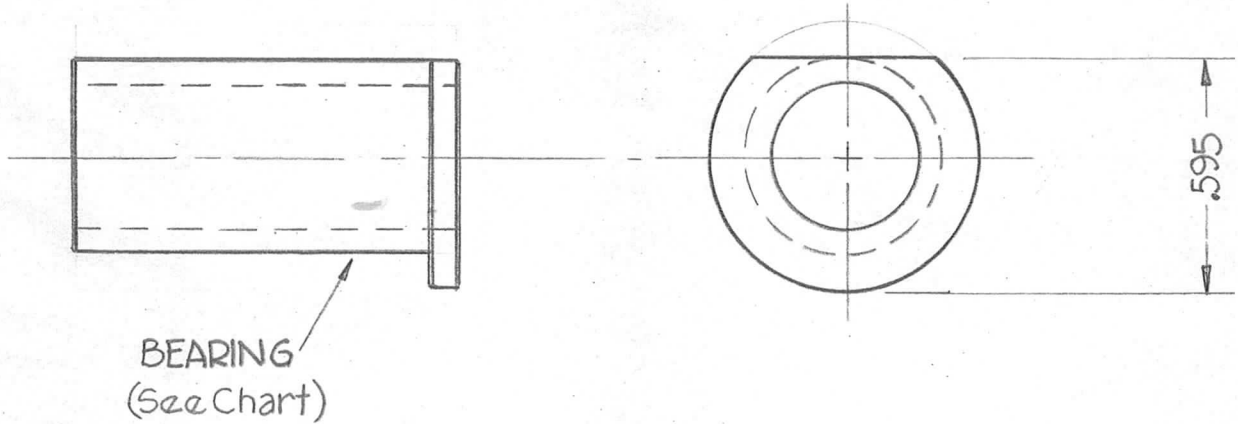
NOTE ~ "A" HOLES TO BE MACHINED AFTER ASS'Y.

NOTE ~  
 1. 5/16 Sq. & 1/2 Round Hole to be concentric with O.D.  
 2. 1/2 Round hole to be slip fit on PM-674.  
 3. 5/16 Sq. hole to be slip fit on PM-676.

REQ.	ITEM	PART NO.	DESCRIPTION			SYMBOL	
			THE TECHNICAL MATERIEL CORP.				
			MAMARONECK, NEW YORK				
			COUPLING, GEAR ASS'Y				
			STAINLESS STEEL				
			MATERIAL				
ISSUE	ITEM	CHANGED FROM	DATE	CH. NO.	DRAFTS	CHECKER	ENG. APP.
TOLERANCES			SCALE:				
DEC. DIM. ±			MAXIMUM ALLOWABLE TOLERANCES HAVE BEEN DETERMINED AND ANY DEVIATIONS WILL BE CAUSE FOR REJECTION.				
FRAC. DIM. ±			REMOVE ALL BURRS AND SHARP EDGES				
ANGULAR DIM. ±							
TYPE & TEMPER		HEAT TREAT. SPEC.		DRAWN		CHECKED	
FINISH & SPEC. NO.		ELEC. DES. APP		MECH. DES. APP		PM-673	

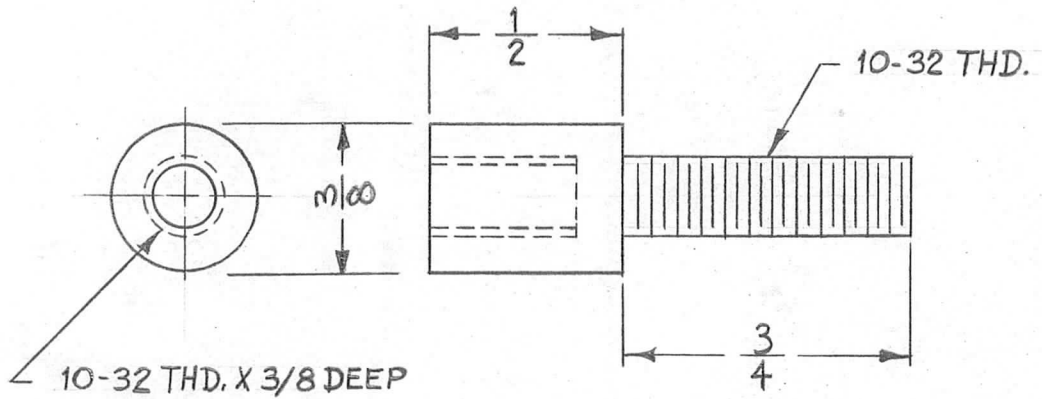
REQ.	TMC PART NO	BEARING NO
1	PM-675-1	BB-118-33
1	PM-675-2	BB-118-32

REQ. PER. UNIT	USED ON			PM-675
	MODEL	ASSY. NO.	DATE	
	40K		11-11-60	



REQ.	ITEM	PART NO.	DESCRIPTION			SYMBOL	
			THE TECHNICAL MATERIEL CORP. MAMARONECK, NEW YORK				
			BEARING, PINION, MACHINED (BANDSWITCH, GEAR ASSY.)				
ISSUE	ITEM	CHANGED FROM	DATE	CH. NO.	DRAFTS	CHECKER	ENG. APP.
TOLERANCES			SCALE:				
DEC. DIM. ±			MAXIMUM ALLOWABLE TOLERANCES HAVE BEEN DETERMINED AND ANY DEVIATIONS WILL BE CAUSE FOR REJECTION.				
FRAC. DIM. ±			REMOVE ALL BURRS AND SHARP EDGES				
ANGULAR DIM. ±							
TYPE & TEMPER		HEAT TREAT. SPEC.	DRAWN	CHECKED	FINAL APPROVAL		
			<i>D.J. [Signature]</i>	aa	<i>BB</i>		
FINISH & SPEC. NO.		ELEC. DES. APP	MECH. DES. APP	PM-675			

REQ. PER. UNIT	USED ON			PM-677
	MODEL	ASSY. NO.	DATE	
9	APP-4		12-5-60	



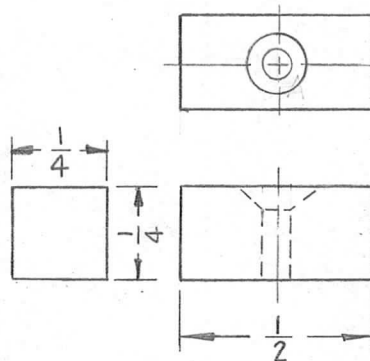
REF: 5410 (MODIFIED AS SHOWN)

REQ.	ITEM	PART NO.	DESCRIPTION		SYMBOL				
		3/8 THK	THE TECHNICAL MATERIEL CORP.						
		STOCK SIZE	MAMARONECK, NEW YORK						
		BRASS	TERMINAL BUSHING TYPE						
		MATERIAL							
ISSUE	ITEM	CHANGED FROM	DATE	CH. NO.	DRAFTS	CHECKER	ENG. APP.		
TOLERANCES			SCALE: 1:2 S401-89(5410)						
DEC. DIM. ±			MAXIMUM ALLOWABLE TOLERANCES HAVE BEEN DETERMINED AND ANY DEVIATIONS WILL BE CAUSE FOR REJECTION. REMOVE ALL BURRS AND SHARP EDGES						
FRAC. DIM. ±									
ANGULAR DIM. ±									
TYPE & TEMPER		HEATTREAT. SPEC.		DRAWN	CHECKED	FINAL APPROVAL			
NICKEL PL. 003				RK	<i>[Signature]</i>	PM-677			
FINISH & SPEC. NO.		ELEC. DES. APP		MECH. DES. APP					



REQ. PER UNIT	USED ON			PM-678	A
	MODEL	ASS'Y. NO.	DATE		
2	CHG-1		12-6-60		

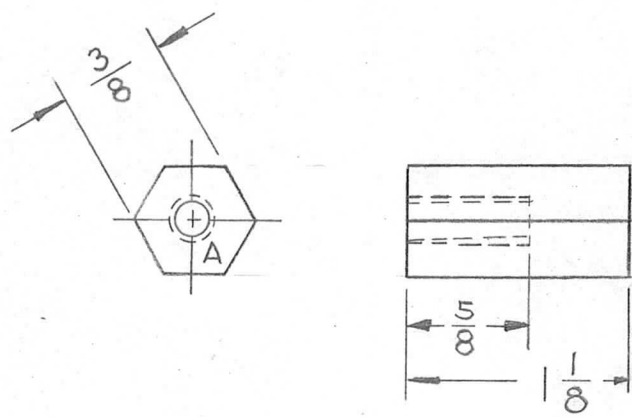
A ~ Dr. & C'tsk for 6-3Z F.H.S. ——— 1 REQ



							REQ.	ITEM	PART NO.	DESCRIPTION			SYMBOL
										THE TECHNICAL MATERIEL CORP. MAMARONECK, NEW YORK			
							ALUMINUM			DIAL STOP GEAR			
							2024-T4						
							S404 YELL. IRIDITE						
							FINISH & SPEC. NO.			ELEC. DES. APP MECH. DES. APP			
A	1	'A' Hole was 1/64 DIA.	3/16/61	4431	DM	JCB				R. UZZO	JLQ		
ISSUE	ITEM	CHANGED FROM	DATE	CH. NO.	DRAFTS	CHECKER	ENG. APP.			DRAWN	CHECKED	FINAL APPROVAL	
TOLERANCES			SCALE: Do NOT SCALE								PM-678 A		
DEC. DIM. ± FRAC. DIM. ± ANGULAR DIM. ±			MAXIMUM ALLOWABLE TOLERANCES HAVE BEEN DETERMINED AND ANY DEVIATIONS WILL BE CAUSE FOR REJECTION. REMOVE ALL BURRS AND SHARP EDGES										

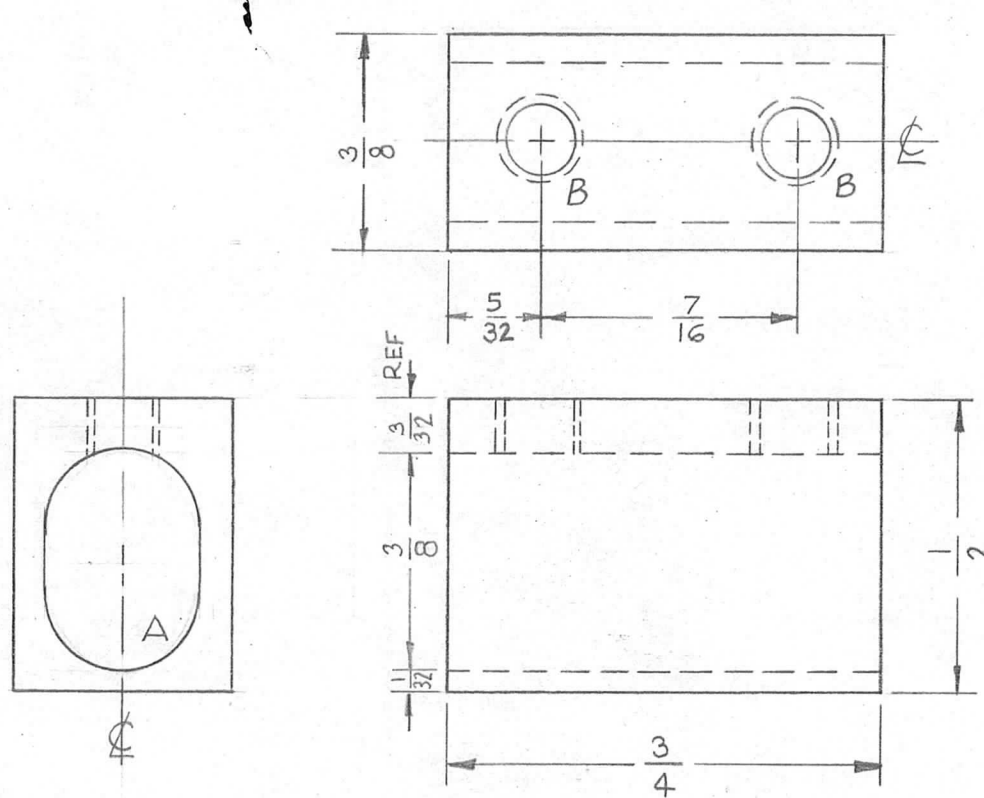
REQ. PER. UNIT	USED ON			PM-679	A
	MODEL	ASSY. NO.	DATE		
1	CHG-1		12-6-60		

A-10-32 DR. & TAP 1 REG



							REQ.	ITEM	PART NO.	DESCRIPTION			SYMBOL		
									3/8 HEX	THE TECHNICAL MATERIEL CORP.					
									STOCK SIZE	MAMARONECK, NEW YORK					
A	1	1/8 DIM WAS 1/4"	1-4-61	3869	NOT	JOB		BRASS	DIAL STOP NUT						
ISSUE	ITEM	CHANGED FROM	DATE	CH. NO.	DRAFTS	CHECKER	ENG. APP.	MATERIAL							
TOLERANCES			SCALE: Do NOT SCALE				1/2 HARD		RUIZZO						
DEC. DIM. ±			MAXIMUM ALLOWABLE TOLERANCES HAVE BEEN DETERMINED AND ANY DEVIATIONS WILL BE CAUSE FOR REJECTION. REMOVE ALL BURRS AND SHARP EDGES				TYPE & TEMPER	HEAT TREAT. SPEC.	DRAWN	CHECKED	FINAL APPROVAL				
FRAC. DIM. ±							NICKEL PLATE						PM-679		A
ANGULAR DIM. ±							FINISH & SPEC. NO.		ELEC. DES. APP	MECH. DES. APP					

REQ. PER. UNIT	USED ON			PM-680	A
	MODEL	ASS'Y. NO.	DATE		
6	GPT-40K	AT101	12-13-60		

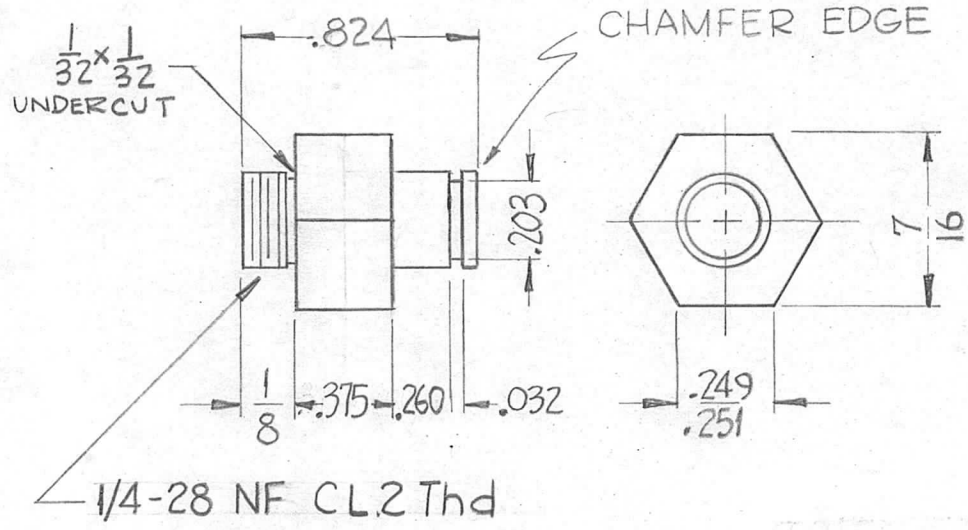


A -  $\frac{3}{8} \times \frac{5}{16}$  ~ 1 REQ  
 B - 8-32 DR & TAP - 2 REQ

								REQ.	ITEM	PART NO.	DESCRIPTION		SYMBOL	
										$\frac{3}{8} \times \frac{1}{2}$	THE TECHNICAL MATERIEL CORP.			
										STOCK SIZE	MAMARONECK, NEW YORK			
										BRASS	CONNECTOR, STRAP			
										MATERIAL				
A	1	FINISH WAS GOLD PLATE	4-4-64	8705	RC	<i>JMG</i>	<i>WDE</i>				<i>RB</i>			
ISSUE	ITEM	CHANGED FROM	DATE	CH. NO.	DRAFTS	CHECKER	ENG. APP.				DRAWN	CHECKED	FINAL APPROVAL	
TOLERANCES			SCALE: 3-1 Do Not Scale											
DEC. DIM. ± FRAC. DIM. ± ANGULAR DIM. ±			MAXIMUM ALLOWABLE TOLERANCES HAVE BEEN DETERMINED AND ANY DEVIATIONS WILL BE CAUSE FOR REJECTION. REMOVE ALL BURRS AND SHARP EDGES											
										TYPE & TEMPER S-245 SILVER PLATE S-423 IRIDITE	HEAT TREAT. SPEC.			
										FINISH & SPEC. NO.	ELEC. DES. APP	MECH. DES. APP		
														PM-680 A



REQ. PER UNIT	USED ON			PM-681	E
	MODEL	ASSY. NO.	DATE		
1	CHG-1	Gear Assy	12-16-60		



FOR SPARE PARTS  
USE ON CHG-1 & 2 ONLY.

FOR CHG-2A, USE  
PM 691 RF-1.250 B

E	2	NOTE FOR SPARE PARTS ADDED SUPERSEDED NOTE DELETED	7-28-64	11962	SRG	<i>[Signature]</i>	<i>[Signature]</i>
D	1	MATERIAL WAS BRASS	7-6-64	11722	WB	<i>[Signature]</i>	<i>[Signature]</i>
C	1	REPLACED BY PMC91-RF-1.250-B	7-5-63	8842	<i>[Signature]</i>	<i>[Signature]</i>	<i>[Signature]</i>
B	2	Chamfer Added	3-6-61	4318	<i>[Signature]</i>	<i>[Signature]</i>	<i>[Signature]</i>
A	1	.824 WAS .699	1-13-61	3929	<i>[Signature]</i>	<i>[Signature]</i>	<i>[Signature]</i>

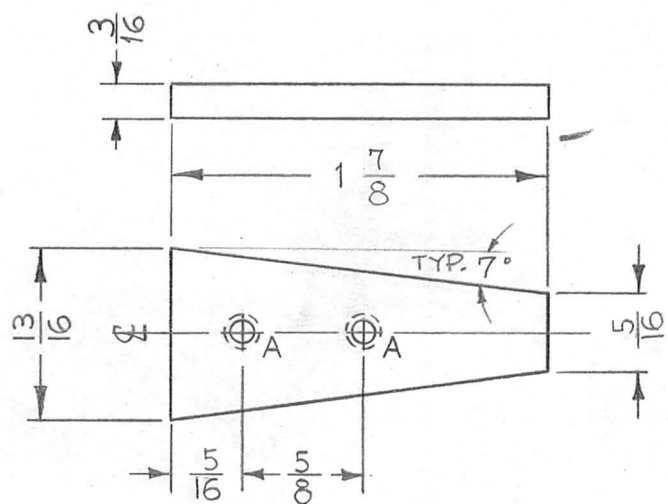
REQ.	ITEM	PART NO.	DESCRIPTION		SYMBOL
		7116 HEX	THE TECHNICAL MATERIEL CORP.		
		STOCK SIZE	MAMARONECK, NEW YORK		
		STAINLESS STEEL	SHAFT, GEAR		
		MATERIAL			
		FREE TURNING	<i>[Signature]</i>	<i>[Signature]</i>	<i>[Signature]</i>
		TYPE & TEMPER	DRAWN	CHECKED	FINAL APPROVAL
		HEAT TREAT. SPEC.			
		FINISH & SPEC. NO.	ELEC. DES. APP	MECH. DES. APP	

ISSUE	ITEM	CHANGED FROM	DATE	CH. NO.	DRAFTS	CHECKER	ENG. APP.
TOLERANCES			SCALE: 2X				
DEC. DIM. ± .0016			MAXIMUM ALLOWABLE TOLERANCES HAVE BEEN DETERMINED AND ANY DEVIATIONS WILL BE CAUSE FOR REJECTION.				
FRAC. DIM. ± 1/64			REMOVE ALL BURRS AND SHARP EDGES				
ANGULAR DIM. ±							

PM-681 E

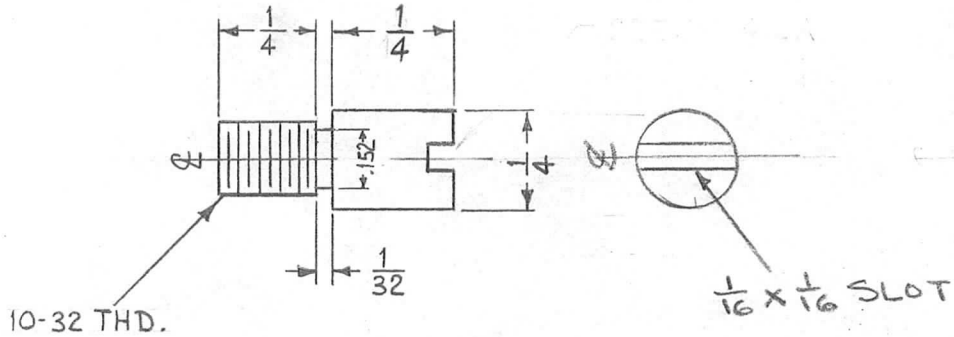
REQ. PER. UNIT	USED ON			PM-686	A
	MODEL	ASS'Y. NO.	DATE		
1	CHG-1	GEAR ASS'Y	1-24-61		

A~DR. & TAP FOR 6-32 F.H.S. 2 REQ.



REQ.	ITEM	PART NO.	DESCRIPTION		SYMBOL
		3/16	THE TECHNICAL MATERIEL CORP.		
		STOCK SIZE	MAMARONECK, NEW YORK		
A	1	ALUMINUM	STOP, BANDSWITCH		
ISSUE		MATERIAL			
CHANGED FROM		2024-T3	DRAWN		
DATE	CH. NO.	DRAFTS	CHECKER	FINAL APPROVAL	
12-12-61	6035	L.L.	W.A.F.	SFM	
TOLERANCES		TYPE & TEMPER		MECH. DES. APP	
SCALE:		HEAT TREAT. SPEC.		ELEC. DES. APP	
DEC. DIM. ±		S404 YELL. IRIDITE		PM-686	
FRAC. DIM. ±		FINISH & SPEC. NO.		A	
ANGULAR DIM. ±					

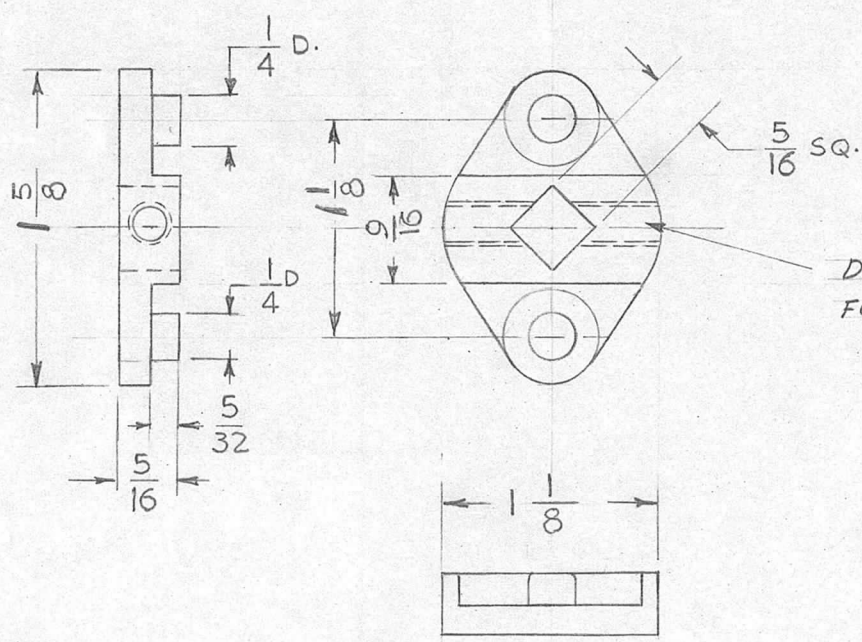
REQ. PER UNIT	USED ON			PM-687
	MODEL	ASS'Y. NO.	DATE	
1	CHG-1		1-23-61	



							REQ.	ITEM	PART NO.	DESCRIPTION			SYMBOL
									1/4 ROD	THE TECHNICAL MATERIEL CORP.			
									STOCK SIZE	MAMARONECK, NEW YORK			
									BRASS	STOP PIN, BANDSWITCH GEAR			
									MATERIAL				
ISSUE	ITEM	CHANGED FROM	DATE	CH. NO.	DRAFTS	CHECKER	ENG. APP.	1/2 H		<i>W.A.F.</i>	<i>J.W.</i>	<i>S.F.M.</i>	
TOLERANCES			SCALE: 1-2					TYPE & TEMPER	HEAT TREAT. SPEC.	DRAWN	CHECKED	FINAL APPROVAL	
DEC. DIM. ±			MAXIMUM ALLOWABLE TOLERANCES HAVE BEEN DETERMINED AND ANY DEVIATIONS WILL BE CAUSE FOR REJECTION. REMOVE ALL BURRS AND SHARP EDGES									PM-687	
FRAC. DIM. ±													
ANGULAR DIM. ±								FINISH & SPEC. NO.		ELEC. DES. APP	MECH. DES. APP		



REQ. PER UNIT	USED ON			PM-688	A
	MODEL	ASSY. NO.	DATE		
1	GPT-10K	AX-227	2-3-61		

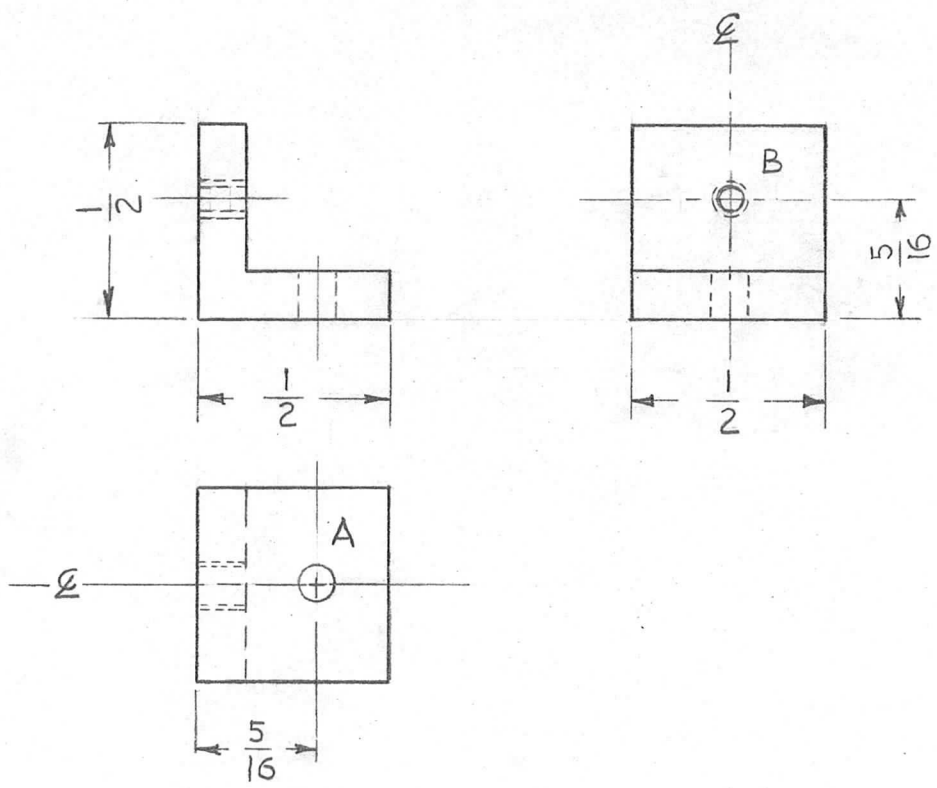


DRILL & TAP THRU FOR 10-32 SET SCREW 2 REQ.

REQ.	ITEM	PART NO.	DESCRIPTION			SYMBOL
			THE TECHNICAL MATERIEL CORP.			
			MAMARONECK, NEW YORK			
			CAM, 2 POINT CATCH			
			MATERIAL			
			TYPE & TEMPER HEAT TREAT. SPEC.			
			FINISH & SPEC. NO.			
			ELEC. DES. APP MECH. DES. APP			
A	1	1-5/8 DIM WAS 1-3/8	10-8-62	7415	GS.	HW
ISSUE ITEM CHANGED FROM			DATE	CH. NO.	DRAFTS	CHECKER
TOLERANCES			SCALE: 3401-78			
DEC. DIM. ±			MAXIMUM ALLOWABLE TOLERANCES HAVE BEEN DETERMINED AND ANY DEVIATIONS WILL BE CAUSE FOR REJECTION.			
FRAC. DIM. ±			REMOVE ALL BURRS AND SHARP EDGES			
ANGULAR DIM. ±						
			DRAWN			CHECKED
			FINAL APPROVAL			
			PM-688			A

REQ. PER. UNIT	USED ON			PM-689
	MODEL	ASSY. NO.	DATE	
	2	CHG-1	GEAR ASSY	

HOLES -  
 A - 3/16 DIA. - 1 Req.  
 B - DRILL & TAP - 8-32 - 1 Req.



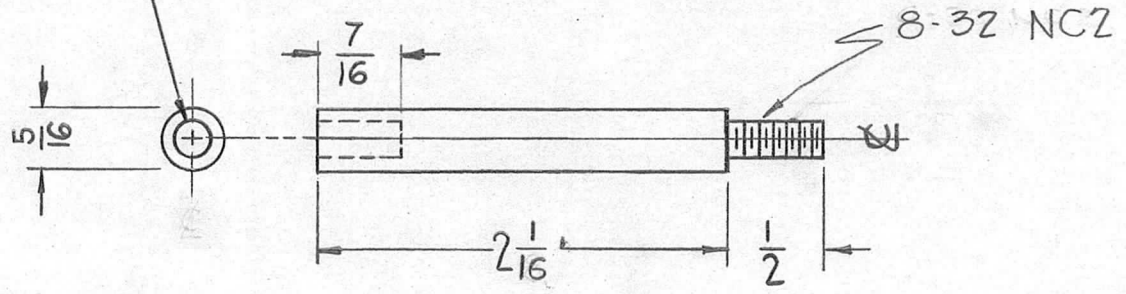
ISSUE	ITEM	CHANGED FROM	DATE	CH. NO.	DRAFTS	CHECKER	ENG. APP.	REQ.	ITEM	PART NO.	DESCRIPTION	SYMBOL
										1/8 x 1/8 x 1/2 4	THE TECHNICAL MATERIEL CORP. MAMARONECK, NEW YORK	SUPPORT BRACKET GEAR PLATE
										STOCK SIZE		
										ALUMINUM		
										MATERIAL		
										6063-T3	<i>Debra</i> DRAWN <i>Jude</i> CHECKED  FINAL APPROVAL	
										5404 YELLOW IRIDITE		PM-689
										FINISH & SPEC. NO.	ELEC. DES. APP	MECH. DES. APP

TOLERANCES  
 DEC. DIM. ±  
 FRAC. DIM. ±  
 ANGULAR DIM. ±

SCALE: 2-1  
 MAXIMUM ALLOWABLE TOLERANCES HAVE BEEN DETERMINED AND ANY DEVIATIONS WILL BE CAUSE FOR REJECTION. REMOVE ALL BURRS AND SHARP EDGES

REQ. PER. UNIT	USED ON			PM-692	B
	MODEL	ASSY. NO.	DATE		
1	SBT-1K	AX-198	2-23-61		

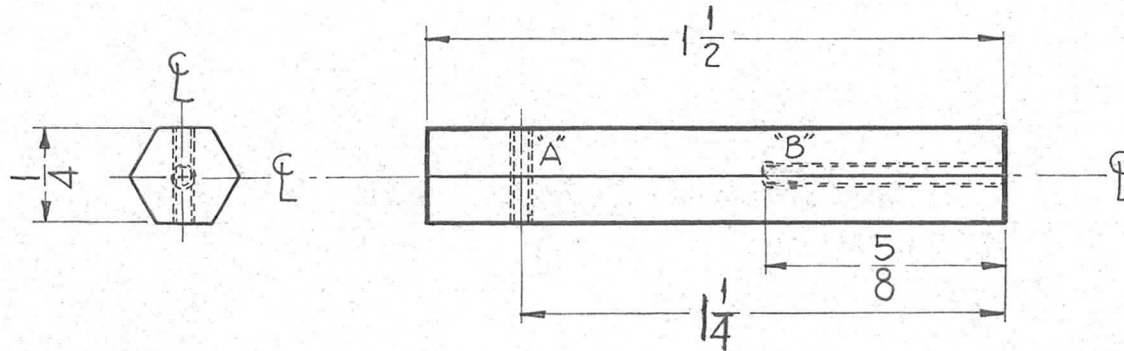
NO 10 DRILL (PRESS FIT FOR HB-113 NYLON PLUG BUTTON)



								REQ. ITEM	PART NO.	DESCRIPTION			SYMBOL
B	1	8-32 Thd was 6-32	3-31-61	4566	RU	JCS	RK	5/16 R.	THE TECHNICAL MATERIEL CORP.				
A	1	Dim. 2 1/16 was 2 1/8	3-27-61	4529	RU	JCS	RK	STOCK SIZE	MAMARONECK, NEW YORK				
ISSUE ITEM CHANGED FROM								ALUMINUM		SWITCH EXTENSION SHAFT			
TOLERANCES								MATERIAL					
SCALE:								IIS-		R. UZZO	<i>[Signature]</i>	<i>[Signature]</i>	
DEC. DIM. ± FRAC. DIM. ± ANGULAR DIM. ±								TYPE & TEMPER HEAT TREAT. SPEC.		DRAWN	CHECKED	FINAL APPROVAL	
MAXIMUM ALLOWABLE TOLERANCES HAVE BEEN DETERMINED AND ANY DEVIATIONS WILL BE CAUSE FOR REJECTION. REMOVE ALL BURRS AND SHARP EDGES								S404 YELL. IRIDITE		RL	<i>[Signature]</i>	PM-692 B	
								FINISH & SPEC. NO.		ELEC. DES. APP	MECH. DES. APP		



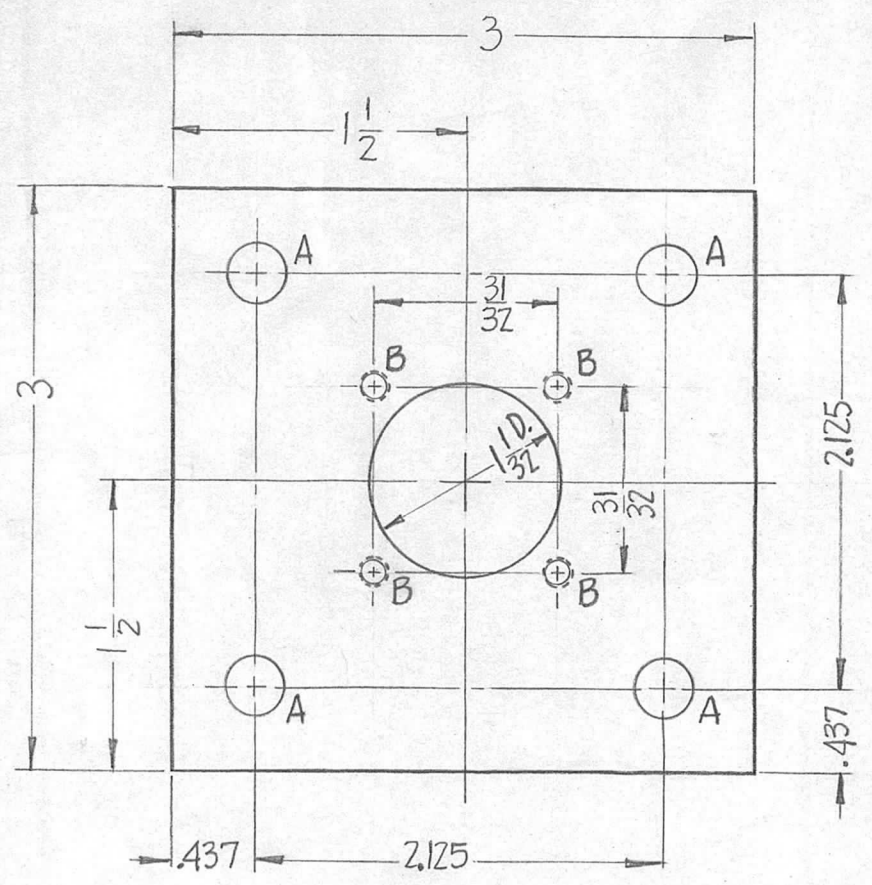
REQ. PER. UNIT	USED ON			PM-693
	MODEL	ASS'Y. NO.	DATE	
Z	CHG-2	OVEN	3-14-61	



HOLE'S REQ.  
 "A" ~ DR. & TAP For 4-40 1  
 "B" ~ DR. & TAP For 6-32 1

								REQ. ITEM	PART NO.	DESCRIPTION			SYMBOL	
								1/4" HEX. ROD		THE TECHNICAL MATERIEL CORP.				
								STOCK SIZE		MAMARONECK, NEW YORK				
								ALUMINUM		SWITCH MOUNTING STANDOFF				
								MATERIAL						
ISSUE	ITEM	CHANGED FROM	DATE	CH. NO.	DRAFTS	CHECKER	ENG. APP.	5052-H32	— # —	<i>D.J. Mann</i>	<i>H.O.</i>	<i>[Signature]</i>		
TOLERANCES			SCALE: Do Not SCALE					TYPE & TEMPER		HEAT TREAT. SPEC.	DRAWN	CHECKED	FINAL APPROVAL	
DEC. DIM. ± .015			MAXIMUM ALLOWABLE TOLERANCES HAVE BEEN DETERMINED AND ANY DEVIATIONS WILL BE CAUSE FOR REJECTION. REMOVE ALL BURRS AND SHARP EDGES					5404 YELLOW IRIDITE						
FRAC. DIM. ± 1/64								FINISH & SPEC. NO.		ELEC. DES. APP	MECH. DES. APP			
ANGULAR DIM. ±											PM-693			

REQ. PER UNIT	USED ON			PM-694
	MODEL	ASS'Y. NO.	DATE	
	RAC-SERIES	AX-256		



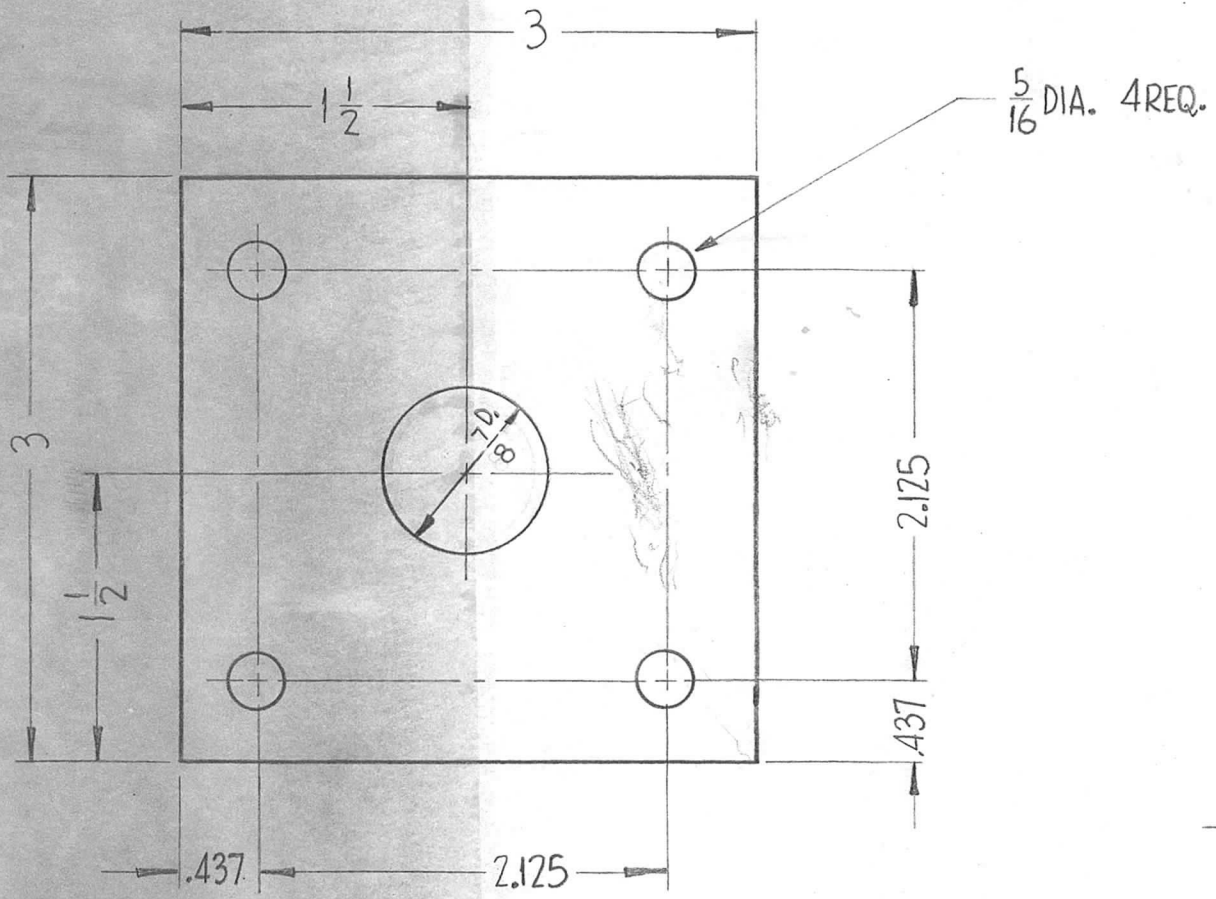
HOLES

A - 5/16 DIA.	REQ. 4
B - DR. & TAP 4-40	REQ. 4

NOTE ~  
REMOVE ALL BURRS

REQ.	ITEM	PART NO.	DESCRIPTION		SYMBOL							
		.250 SHEET	THE TECHNICAL MATERIEL CORP.									
		STOCK SIZE	MAMARONECK, NEW YORK									
		ALUMINUM	FLANGE									
		MATERIAL										
ISSUE	ITEM	CHANGED FROM	DATE	CH. NO.	DRAFTS	CHECKER	ENG. APP.	24ST-3		<i>D.J. Mann</i>	<i>H.Oe</i>	<i>e</i>
TOLERANCES			SCALE: <i>1/16" = 1"</i>			TYPE & TEMPER		HEAT TREAT. SPEC.	DRAWN	CHECKED	FINAL APPROVAL	
DEC. DIM. ± .005			MAXIMUM ALLOWABLE TOLERANCES HAVE BEEN DETERMINED AND ANY DEVIATIONS WILL BE CAUSE FOR REJECTION. REMOVE ALL BURRS AND SHARP EDGES			S-404 YELLOW IRIDITE					PM-694	
FRAC. DIM. ± 1/64						FINISH & SPEC. NO.		ELEC. DES. APP	MECH. DES. APP			
ANGULAR DIM. ±												

REQ. PER UNIT	USED ON			PM-695	B
	MODEL	ASSY. NO.	DATE		

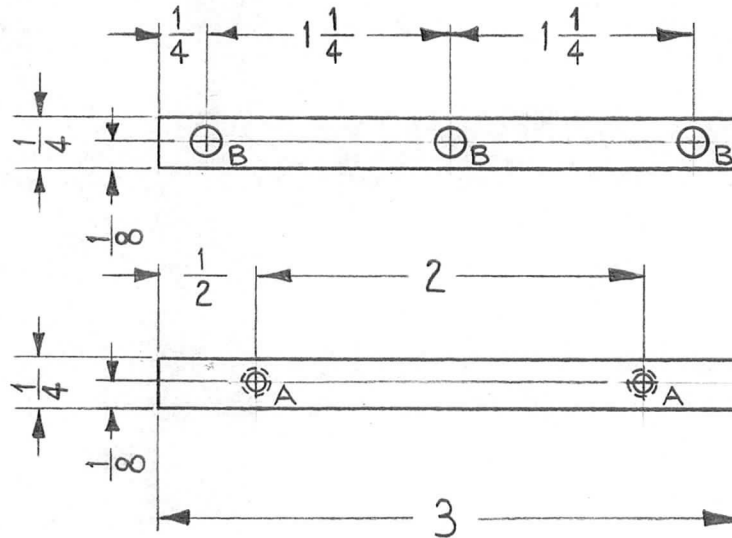


NOTE:  
REMOVE ALL BURRS

ISSUE	ITEM	CHANGED FROM	DATE	CH. NO.	DRAFTS	CHECKER	ENG. APP.	REQ. ITEM	PART NO.	DESCRIPTION	SYMBOL	
									.250 SHEET	THE TECHNICAL MATERIEL CORP. MAMARONECK, NEW YORK FLANGE, MOUNTING		
B	1	USED ON CHART, RAC-36 DELETED	8-17-62	7076	F.S.	<i>MD</i>	<i>LG</i>		STOCK SIZE			
A	1	7/8 Dia. Was 3/4 Dia.	11-30-61	5969	L.L.	<i>MD</i>	<i>MD</i>		ALUMINUM			
TOLERANCES			SCALE: DO NOT SCALE					245T-3				
DEC. DIM. ± .005 FRAC. DIM. ± 1/64 ANGULAR DIM. ±			MAXIMUM ALLOWABLE TOLERANCES HAVE BEEN DETERMINED AND ANY DEVIATIONS WILL BE CAUSE FOR REJECTION. REMOVE ALL BURRS AND SHARP EDGES					TYPE & TEMPER S-404 IRIDITE	HEAT TREAT. SPEC.	DRAWN <i>D.J. [Signature]</i>	CHECKED <i>MD</i>	FINAL APPROVAL <i>SJM</i>
								FINISH & SPEC. NO.	ELEC. DES. APP.	MECH. DES. APP.	PM-695	B



REQ. PER. UNIT	USED ON			PM-697
	MODEL	ASS'Y. NO.	DATE	
1	CHG-2	OVEN	5-18-61	



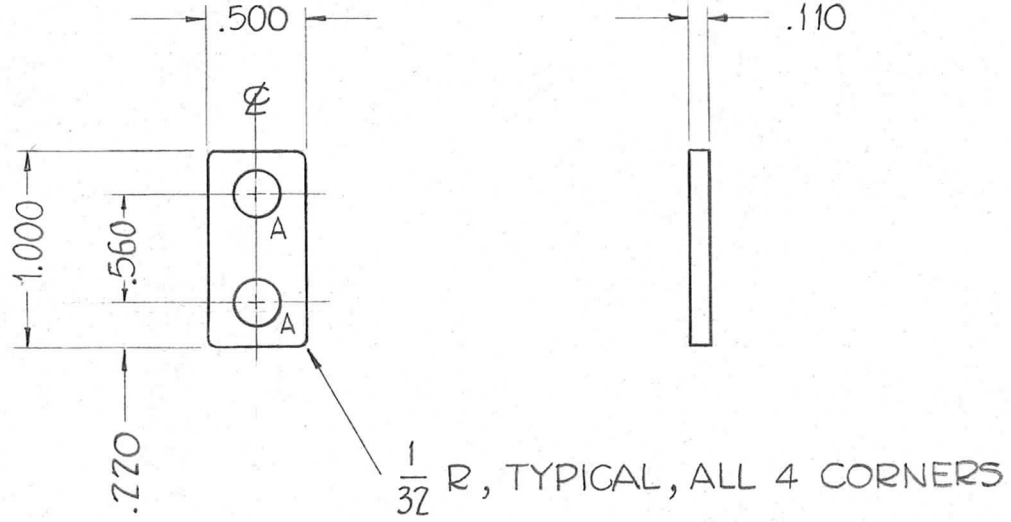
A~DR. & TAP FOR 4-40 2 REQ.  
 B~ $\frac{5}{32}$  DIA. 3 REQ.

ISSUE	ITEM	CHANGED FROM	DATE	CH. NO.	DRAFTS	CHECKER	ENG. APP.	REQ. ITEM	PART NO.	DESCRIPTION	SYMBOL	
								3 X 1/4 X 1/4		THE TECHNICAL MATERIEL CORP.		
								STOCK SIZE		MAMARONECK, NEW YORK		
								ALUMINUM		BAR, MOUNTING, FINGER STOCK		
								MATERIAL				
								5052-H32		<i>WAF</i>	<i>HOE</i>	
								TYPE & TEMPER	HEAT TREAT. SPEC.	DRAWN	CHECKED	
								S404 YELL IRIDITE		<i>S.D.</i>	<i>WAF</i>	
								FINISH & SPEC. NO.	ELEC. DES. APP	MECH. DES. APP	PM-697	
TOLERANCES			SCALE: FULL (DO NOT SCALE)									
DEC. DIM. ±			MAXIMUM ALLOWABLE TOLERANCES HAVE BEEN DETERMINED AND ANY DEVIATIONS WILL BE CAUSE FOR REJECTION. REMOVE ALL BURRS AND SHARP EDGES									
FRAC. DIM. ± 1/64												
ANGULAR DIM. ±												

HOLES \_\_\_\_\_

A - .218 DIA. \_\_\_\_\_ 2 REQ.

REQ. PER. UNIT	USED ON			PM-699
	MODEL	ASS'Y. NO.	DATE	
32	GPT-40K	AX-267	6-22-61	



NOTE - ALL DIMENSIONS APPLY AFTER PLATING.

FINISHING NOTES \_\_\_\_\_

S-245 - SILVER PLATE, BRIGHT  
S-423 - IRIDITE, 18-P SILVER KOTE

								REQ.	ITEM	PART NO.	DESCRIPTION	SYMBOL	
								AS NOTED		THE TECHNICAL MATERIEL CORP.			
								STOCK SIZE		MAMARONECK, NEW YORK			
								BRASS		BAR, TIE-DOWN			
								MATERIAL					
ISSUE	ITEM	CHANGED FROM	DATE	CH. NO.	DRAFTS	CHECKER	ENG. APP.	HALF HARD		John C. Biele	<i>M.G.F.</i>	<i>LB/FB</i>	
TOLERANCES			SCALE: - DO NOT SCALE -					TYPE & TEMPER	HEAT TREAT. SPEC.	DRAWN	CHECKED	FINAL APPROVAL	
DEC. DIM. $\pm$ .005			MAXIMUM ALLOWABLE TOLERANCES HAVE BEEN DETERMINED AND ANY DEVIATIONS WILL BE CAUSE FOR REJECTION. REMOVE ALL BURRS AND SHARP EDGES					SEE NOTE				PM-699	
FRAC. DIM. $\pm$								FINISH & SPEC. NO.		ELEC. DES. APP	MECH. DES. APP		
ANGULAR DIM. $\pm$													