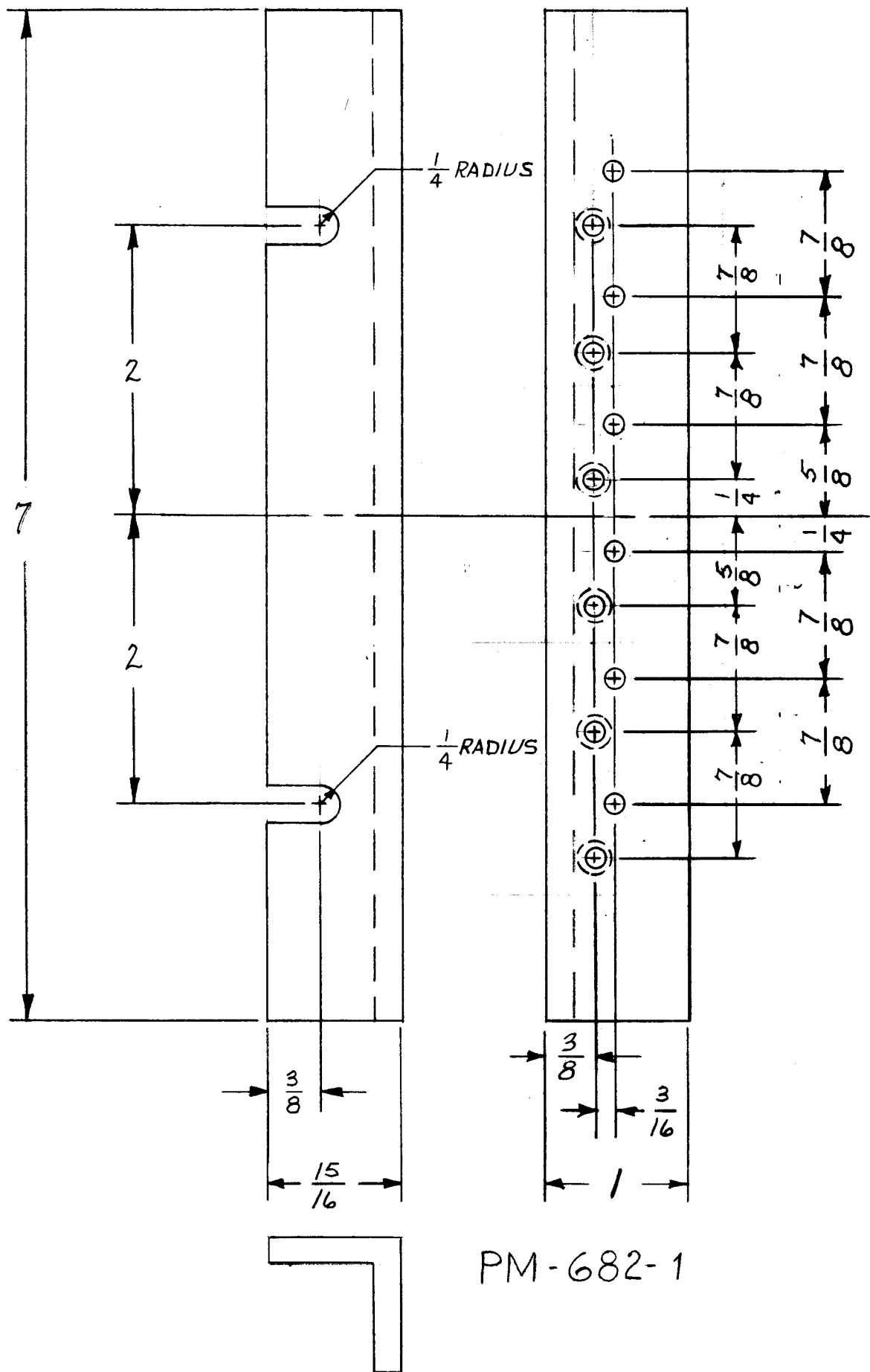


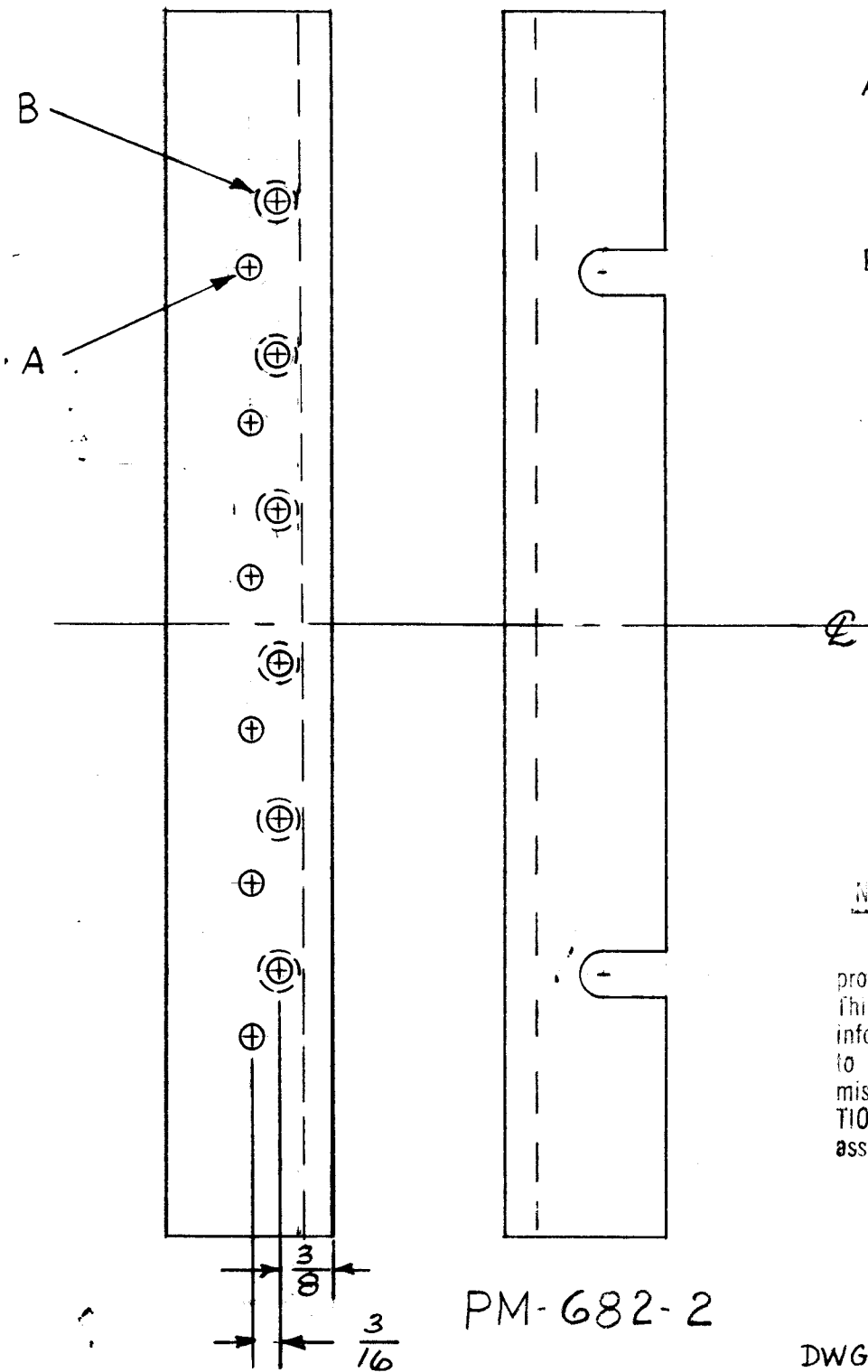
PM-682

LEFT SIDE



PM-682-1

RIGHT SIDE



PM-682-2

HOLE DIMENSION

- A. .166 DIA. HOLE  
DRILL THRU  
12 REQUIRED
- B. DRILL .166 DIA HOLE,  
COUNTER BORE 1/16 DEEP  
5/16 DIA  
12 REQUIRED

NOTICE TO PERSONS RECEIVING THIS DRAWING

THE TECHNICAL MATERIEL CORPORATION claims proprietary right in the material disclosed hereon. This drawing is issued in confidence for engineering information only and may not be reproduced or used to manufacture anything shown hereon without permission from THE TECHNICAL MATERIEL CORPORATION to the user. This drawing is loaned for mutual assistance and is subject to recall at any time.

Property of:  
THE TECHNICAL MATERIEL CORPORATION  
MAMARONECK, NEW YORK

DWG WAS SY-1024-5

3/16 STOCK SIZE		THE TECHNICAL MATERIEL CORP. MAMARONECK, NEW YORK SYSTEMS DEPARTMENT		
ALUMINUM MATERIAL		SALES ORDER NUMBER	PROPOSAL NUMBER	QR NUMBER
TYPE & TEMPER HEAT TREAT. & SPEC.		TITLE: LEFT AND RIGHT SIDE ANGLE BRACKET FOR CPP-4		
FINISH & SPEC. NO.		MJT	6-28-60	PM-682
		DRAWN BY	DATE	FINAL APPROVAL