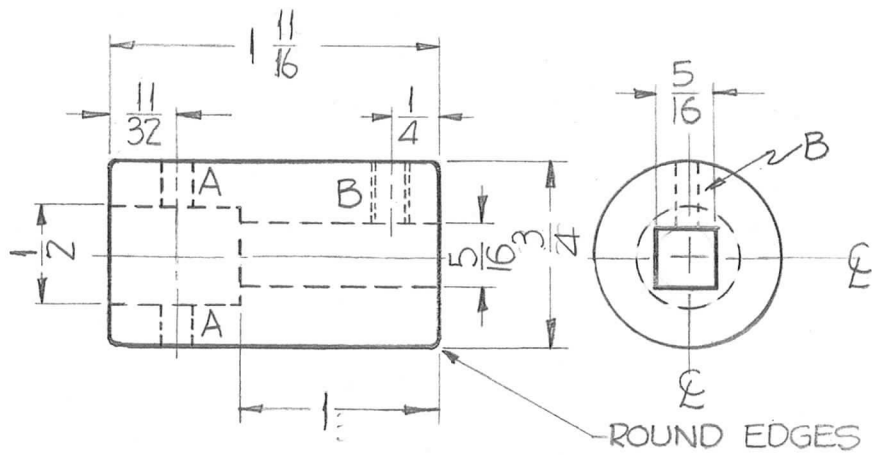


REQ. PER. UNIT	USED ON			PM-673
	MODEL	ASS'Y. NO.	DATE	
1	GPT-40K		11-9-60	



HOLES ~
 A ~ .125" DIA. REQ 2
 B ~ DR. & TAP FOR 10-32 1

NOTE ~ "A" HOLES TO BE MACHINED AFTER ASS'Y.

NOTE ~
 1. 5/16" Sq. & 1/2" Round Hole to be concentric with O.D.
 2. 1/2" Round hole to be slip fit on PM-674.
 3. 5/16 Sq. hole to be slip fit on PM-676.

REQ.	ITEM	PART NO.	DESCRIPTION			SYMBOL	
			THE TECHNICAL MATERIEL CORP.				
			MAMARONECK, NEW YORK				
			COUPLING, GEAR ASS'Y				
			STAINLESS STEEL				
			MATERIAL				
ISSUE	ITEM	CHANGED FROM	DATE	CH. NO.	DRAFTS	CHECKER	ENG. APP.
TOLERANCES			SCALE:				
DEC. DIM. ±			MAXIMUM ALLOWABLE TOLERANCES HAVE BEEN DETERMINED AND ANY DEVIATIONS WILL BE CAUSE FOR REJECTION.				
FRAC. DIM. ±			REMOVE ALL BURRS AND SHARP EDGES				
ANGULAR DIM. ±							
TYPE & TEMPER		HEAT TREAT. SPEC.		DRAWN		CHECKED	
				D.J. Mann		aa	
FINISH & SPEC. NO.		ELEC. DES. APP		MECH. DES. APP		FINAL APPROVAL	
						PM-673	