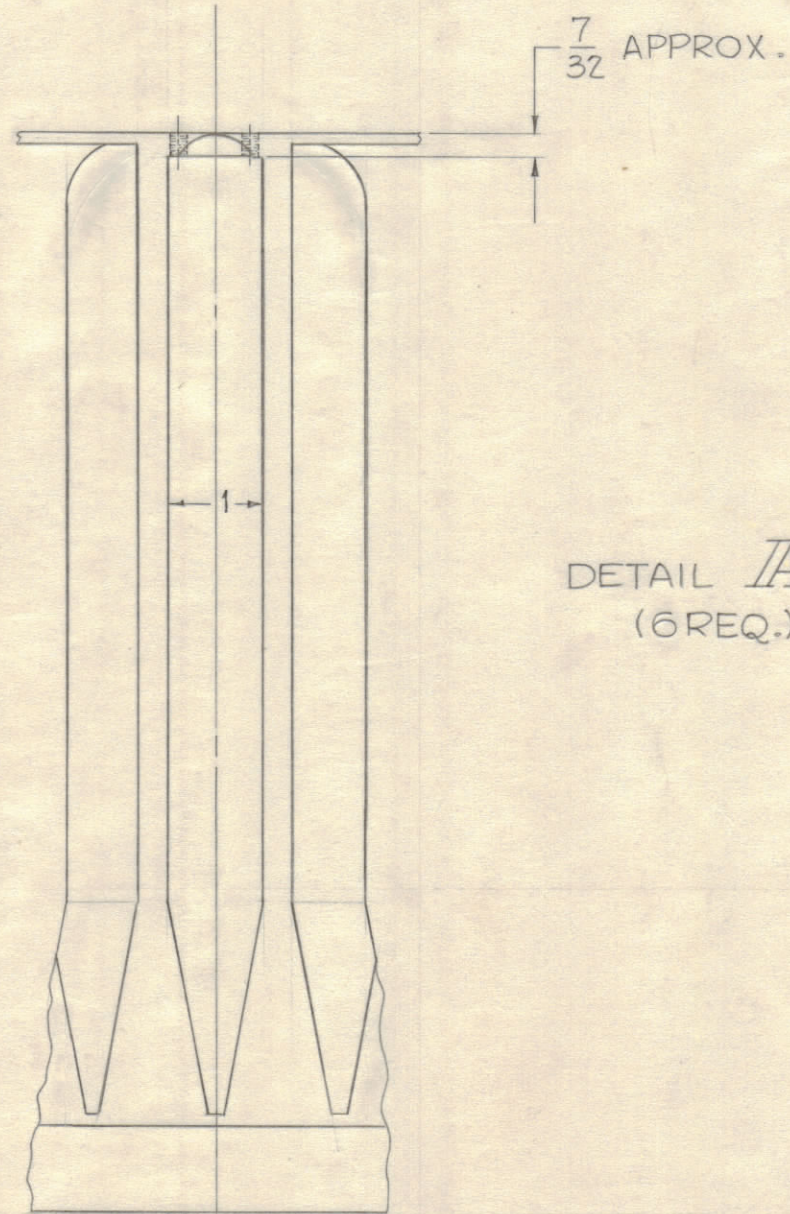
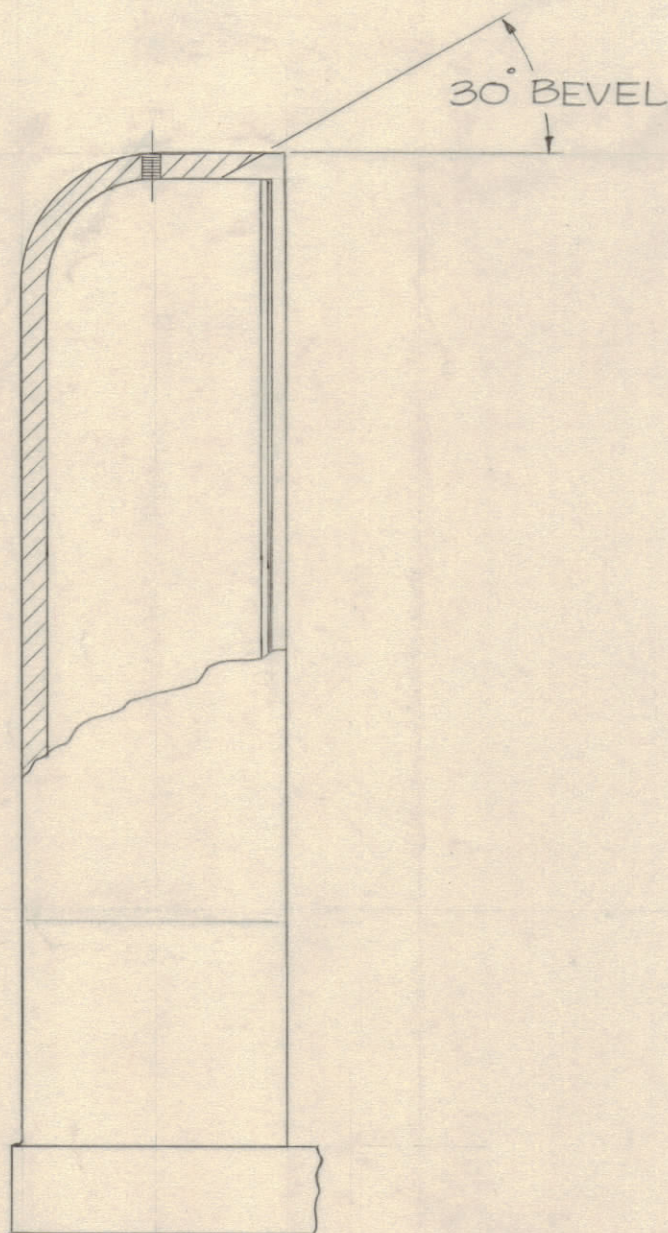
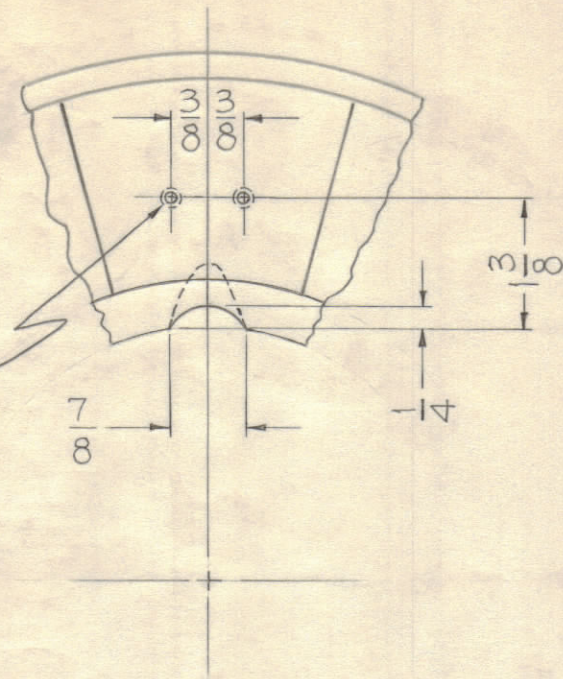


NOTICE TO PERSONS RECEIVING THIS DRAWING

THE TECHNICAL MATERIEL CORPORATION claims proprietary right in the material disclosed hereon. This drawing is issued in confidence for engineering information only and may not be reproduced or used to manufacture anything shown hereon without permission from THE TECHNICAL MATERIEL CORPORATION to the user. This drawing is loaned for mutual assistance and is subject to recall at any time.

Property of:
THE TECHNICAL MATERIEL CORPORATION
MAMARONECK, NEW YORK

DRILL & TAP FOR
6-32, 2 REQ.



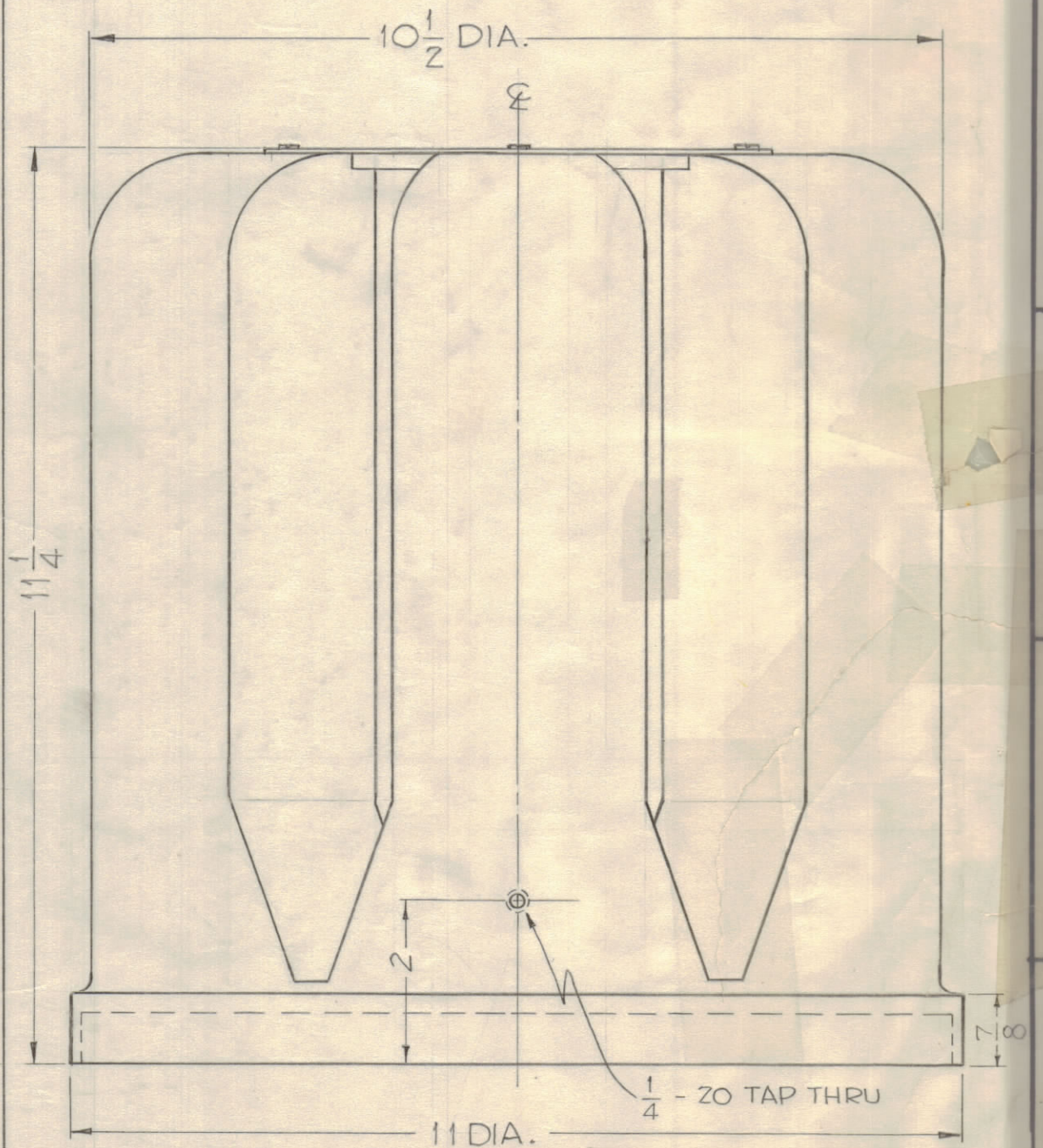
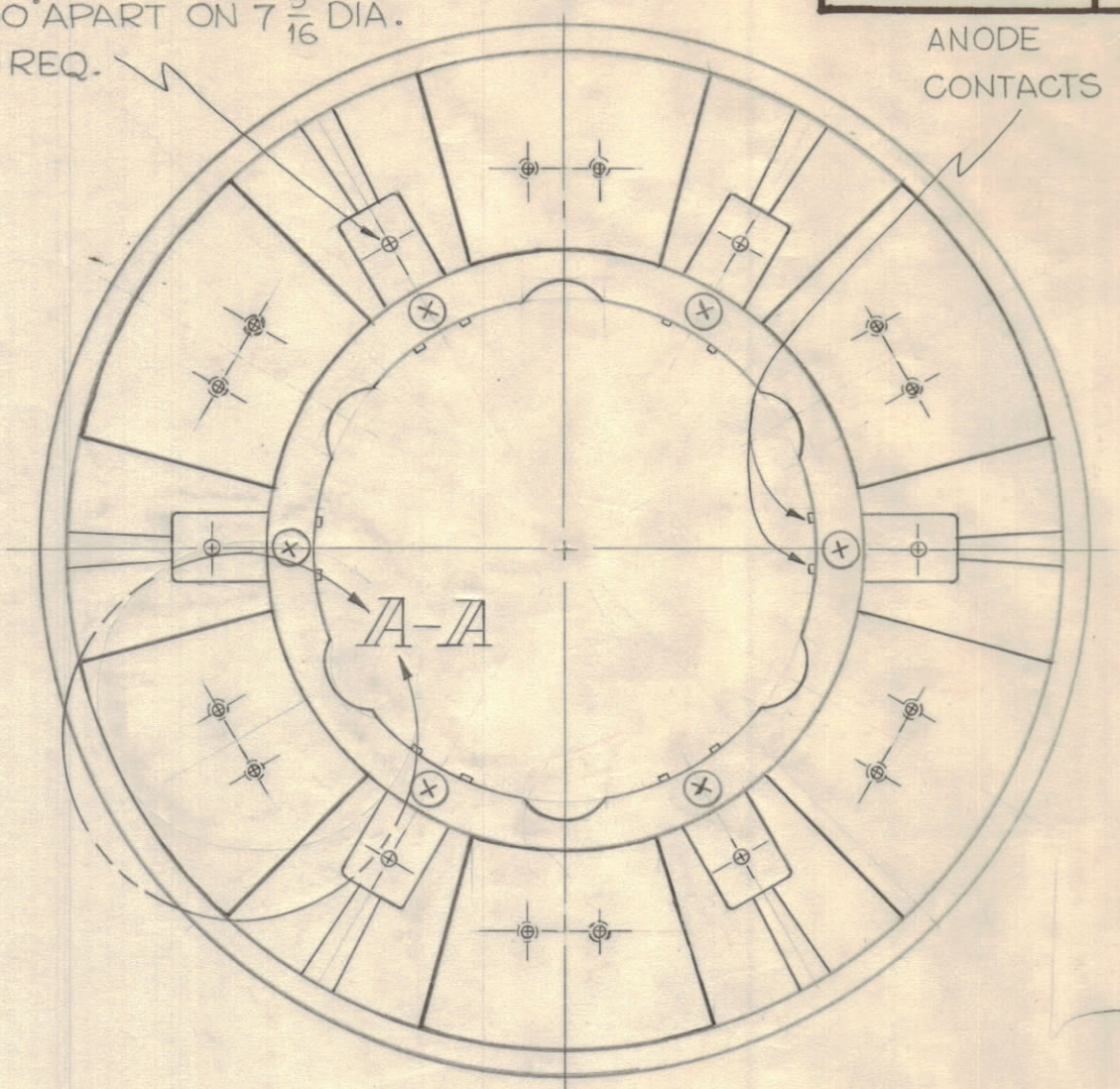
DETAIL A-A
(6 REQ.)

INTERIOR VIEW OF CHAMBER SHOWN

ANODE CONNECTOR HOLES, FOR #10 SCREWS, 60° APART ON 7 5/16 DIA. 6 REQ.

PM-660 A

ANODE CONTACTS



REF ~ TMC PART NO. PO-193

REQ. ITEM	PART NO.	DESCRIPTION	SYMBOL
THE TECHNICAL MATERIEL CORP. MAMARONECK, NEW YORK			
STOCK SIZE		MODIFICATION, AIR DISTRIBUTOR	
ALUMINUM			
MATERIAL			
TYPE & TEMPER		John C. Biele	
		DRAWN	ELEC. DES. APP.
		CHECKED	MECH. DES. APP.
HEAT TREAT. SPEC.		FINAL APPROVAL	
YELLOW IRIDITE		PM-660 A	
FINISH & SPEC. NO.			

REQ. PER UNIT	MODEL	SECTION	ASS'Y. NO.	DATE
1	GPT 40K			8-10-60

ISSUE	ZONE	DESCRIPTION	DATE	CH. NO.	DRAFTS	CHECKER	ENG. APP.
A	A2	MATERIAL & FINISH ADDED	4-18-61	4710	RU	JB	OB

SCALE: S401-84 (F-17759)

MAXIMUM ALLOWABLE TOLERANCES HAVE BEEN DETERMINED AND ANY DEVIATIONS WILL BE CAUSE FOR REJECTION.
REMOVE ALL BURRS AND SHARP EDGES

TOLERANCES
DEC. DIM. ±
FRAC. DIM. ± 1/64
ANGULAR DIM. ±