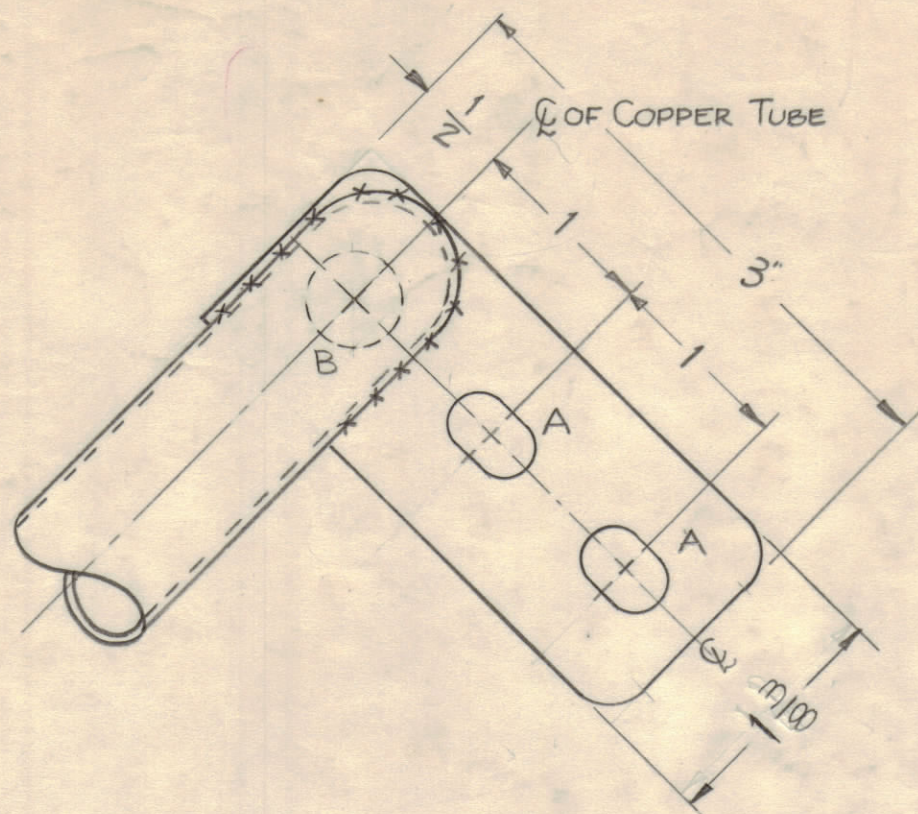


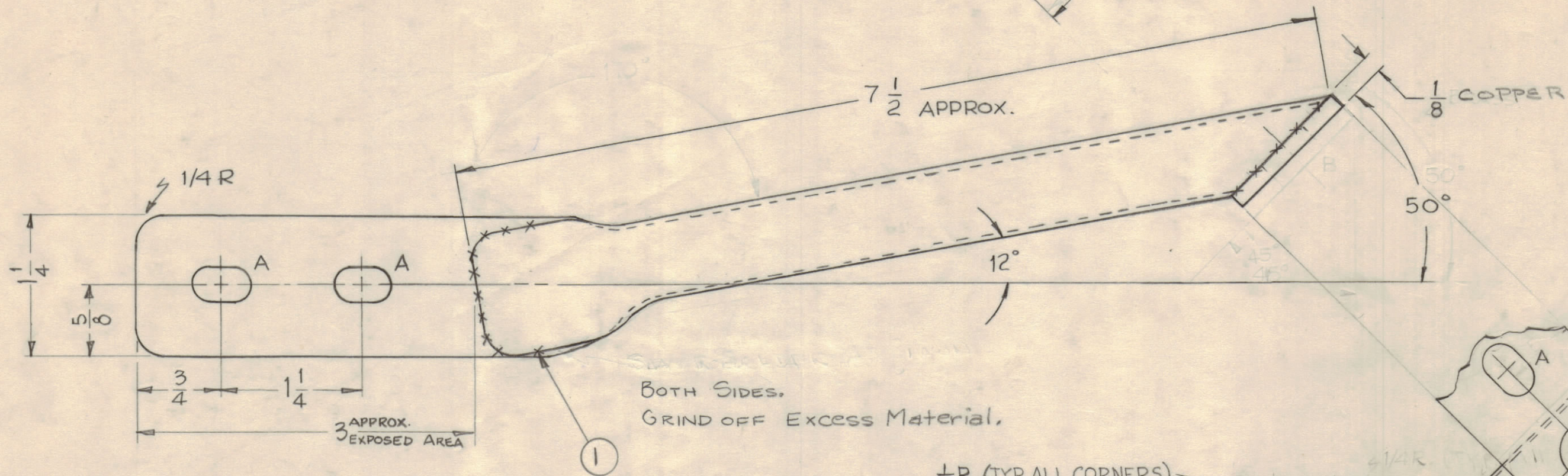
NOTICE TO PERSONS RECEIVING THIS DRAWING

THE TECHNICAL MATERIEL CORPORATION claims proprietary right in the material disclosed hereon. This drawing is issued in confidence for engineering information only and may not be reproduced or used to manufacture anything shown hereon without permission from THE TECHNICAL MATERIEL CORPORATION to the user. This drawing is loaned for mutual assistance and is subject to recall at any time.

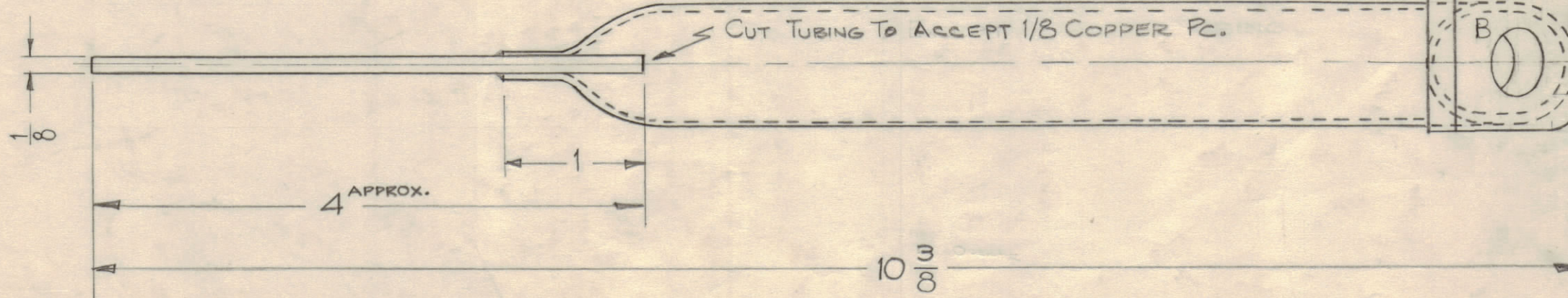
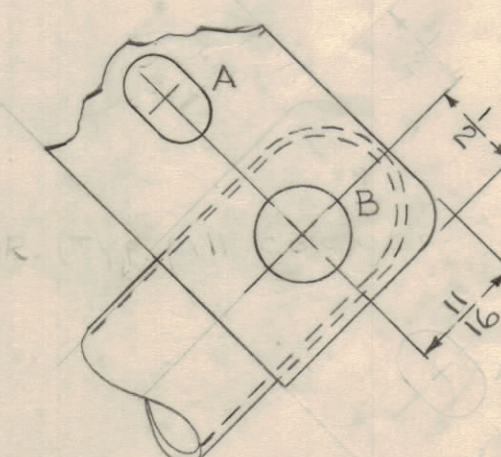
Property of:
THE TECHNICAL MATERIEL CORPORATION
MAMARONECK, NEW YORK



HOLES	REQ'D.
A ~ 5/16 x 1/2 SLOT	4
B ~ 1/2 DIA.	1



1/4 R. (TYP. ALL CORNERS)



NOTE ~ Remove all sharp edges.

ISSUE	ZONE	DESCRIPTION	DATE	CH. NO.	DRAFTS	CHECKER	ENG. APP.
F		ITEM 1 ADDED SILVER SOLDER AS SHOWN NOTE DELETED	3-3-67	17888	G.D.L.		
E		7 1/2 APPROX. ADDED. 1/8 DIM. WAS 1/4, 1/16 WAS 5/8.	8-27-63	9829			
D		ADDED B HOLE. FINISH WAS .000025 GOLD PLATE	3-18-63	8561			
C		DIM 45° DELETED	10/20/60	3239			
B		DIM. 50° & 12° ADDED	10/11/60	3050			
A		DIM. 10 3/8 WAS 10 5/8, DIM 170° DELETED	9-14-60	2940			
A		1 1/2 DIM. WAS 1 1/2 DIM.					

REQ PER UNIT	MODEL	SECTION	ASS'Y. NO.	DATE
1	GPT-40K	AX-209		5-26-60

REQ. ITEM	PART NO.	DESCRIPTION	SYMBOL
X 1	BS101-1	SOLDER, SILVER	
		1/8 COPPER	
		7/8 Copper Tubing	
		THE TECHNICAL MATERIEL CORP. MAMARONECK, NEW YORK	
		CONNECTOR, BANDSWITCH, TUBE	
		TYPE & TEMPER	
		HEAT TREAT. SPEC.	
		S-245 SILVER PLATE S-423 CLEAR IRIDITE FINISH & SPEC. NO.	
		DRAWN	ELEC. DES. APP.
		CHECKED	MECH. DES. APP.
			FINAL APPROVAL
			PM-650 F