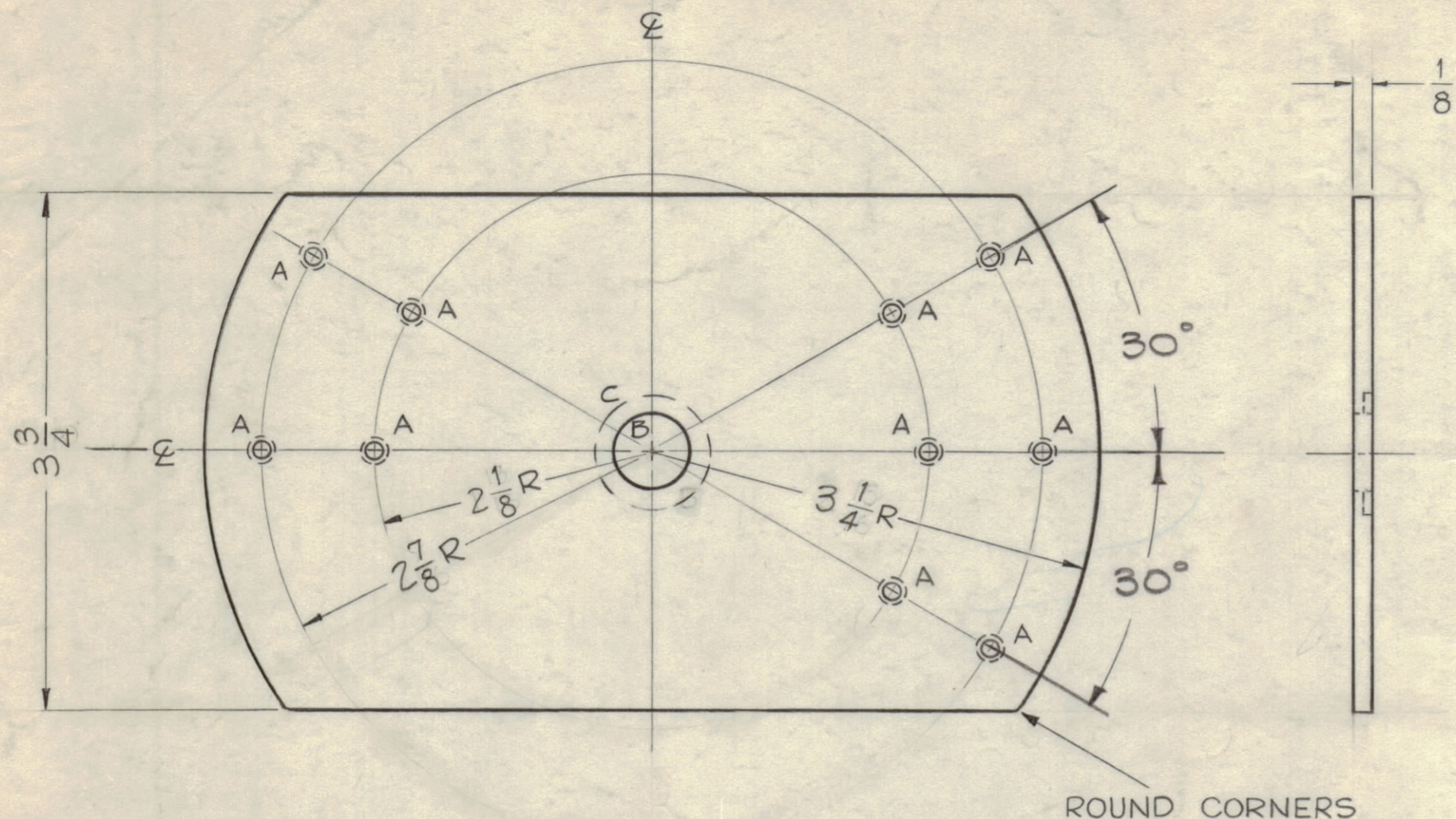


IF IT IS FOUND DESIRABLE TO CHANGE ANY TOLERANCE OR OTHER DETAIL SPECIFIED ON THIS DRAWING NOTIFY THE PURCHASER PROMPTLY.

MAXIMUM ALLOWABLE TOLERANCES HAVE BEEN DETERMINED AND DEVIATIONS WILL BE CAUSE FOR REJECTION. REMOVE ALL BURRS AND SHARP EDGES.

HOLES ~

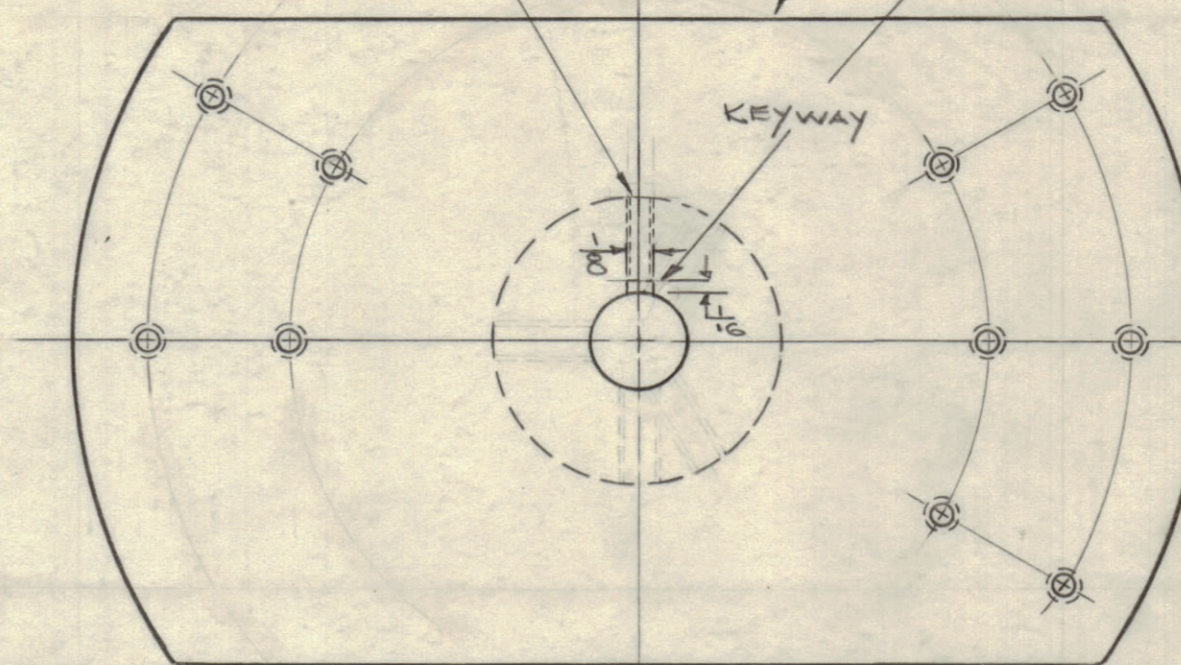
- A ~ DRILL & TAP 8-32 10 REQ.
- B ~ 1/2 (.500) DIA. $\begin{matrix} +.0015 \\ -.0000 \end{matrix}$ 1 REQ.
- C ~ .750 DIA. X 1/16 Deep C'bore 1 REQ.



ROTOR

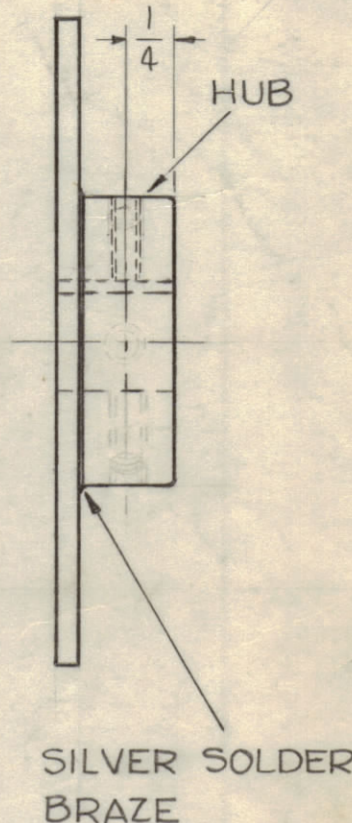
MATERIAL ~ 1/8 THICK BRASS
TYPE & TEMPER ~ 1/2 HARD
1 REQ. PER UNIT

DRILL & TAP HUB 10-32
ROTOR
NOTE MAKE KEYWAY & THREADED HOLE AFTER ASSY.



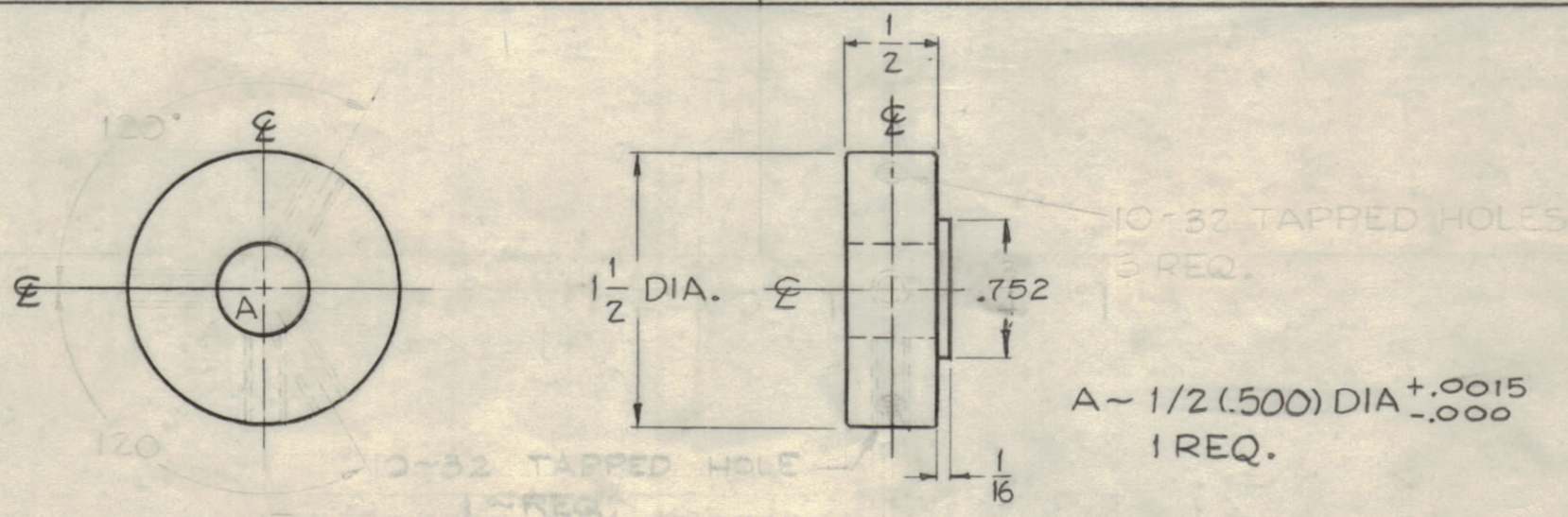
ASSEMBLY, ROTOR & HUB

FINISH ~ S-245 ~ SILVER PLATE (.0003 THK.)
S-423 ~ CLEAR IRIDITE



SILVER SOLDER BRAZE

PM-607E



HUB

MATERIAL ~ BRASS, TYPE ~ FREE TURNING
1 REQ. PER UNIT

ISSUE	ITEM	CHANGED FROM	DATE	CH. NO.	DRAFTS	CHECKER	ENG. APP.
F	1	10-32 DRILL & TAP HOLE ADDED	8-23-62	7131	SG	[Signature]	[Signature]
E	1	Rotor-Hub Assy Finish was GOLD PLATE	5/3/61	4818	[Signature]	[Signature]	[Signature]
D	1	10-32 TAPPED HOLE DELETED	10/14/60	3170	[Signature]	[Signature]	[Signature]
C	1	KEYWAY ADDED DELETED ONE 10-32 TAPPED HOLE	3-15-60	60	[Signature]	[Signature]	[Signature]
B	1	2-1/8 WAS 1-13/16, 2-7/8 WAS 2-9/16, 3-1/4 WAS 2-15/16, 3-3/4 WAS 3-5/8, 1/16 X 3/4 HOLE ADDED	3/11/60		[Signature]	[Signature]	[Signature]
A	1	DWG # DUPLICATED WAS PM-606	3-7-60		[Signature]	[Signature]	[Signature]

NOTICE TO PERSONS RECEIVING THIS DRAWING

THE TECHNICAL MATERIEL CORPORATION claims proprietary right in the material disclosed hereon. This drawing is issued in confidence for engineering information only and may not be reproduced or used to manufacture anything shown hereon without permission from THE TECHNICAL MATERIEL CORPORATION to the user. This drawing is loaned for mutual assistance and is subject to recall at any time.

Property of:
THE TECHNICAL MATERIEL CORPORATION
MAMARONECK, NEW YORK

REQ. ITEM	PART NO.	DESCRIPTION	SYMBOL
SEE NOTES		THE TECHNICAL MATERIEL CORP. MAMARONECK, NEW YORK	
STOCK SIZE		ROTOR, SWITCH ANTENNA TUNER	
MATERIAL		John C. Biele	
WEIGHT PER PC.		DRAWN	
TYPE & TEMPER		ELEC. DES. APP.	
HEAT TREAT. SPEC.		MECH. DES. APP.	
SEE NOTES		CHECKED	
FINISH & SPEC. NO.		FINAL APPROVAL	

REQ. PER UNIT	MODEL	PROJECT NO.	ASSY. NO.	DATE
1	AT-101	GPT40K		3-3-60
USED ON				