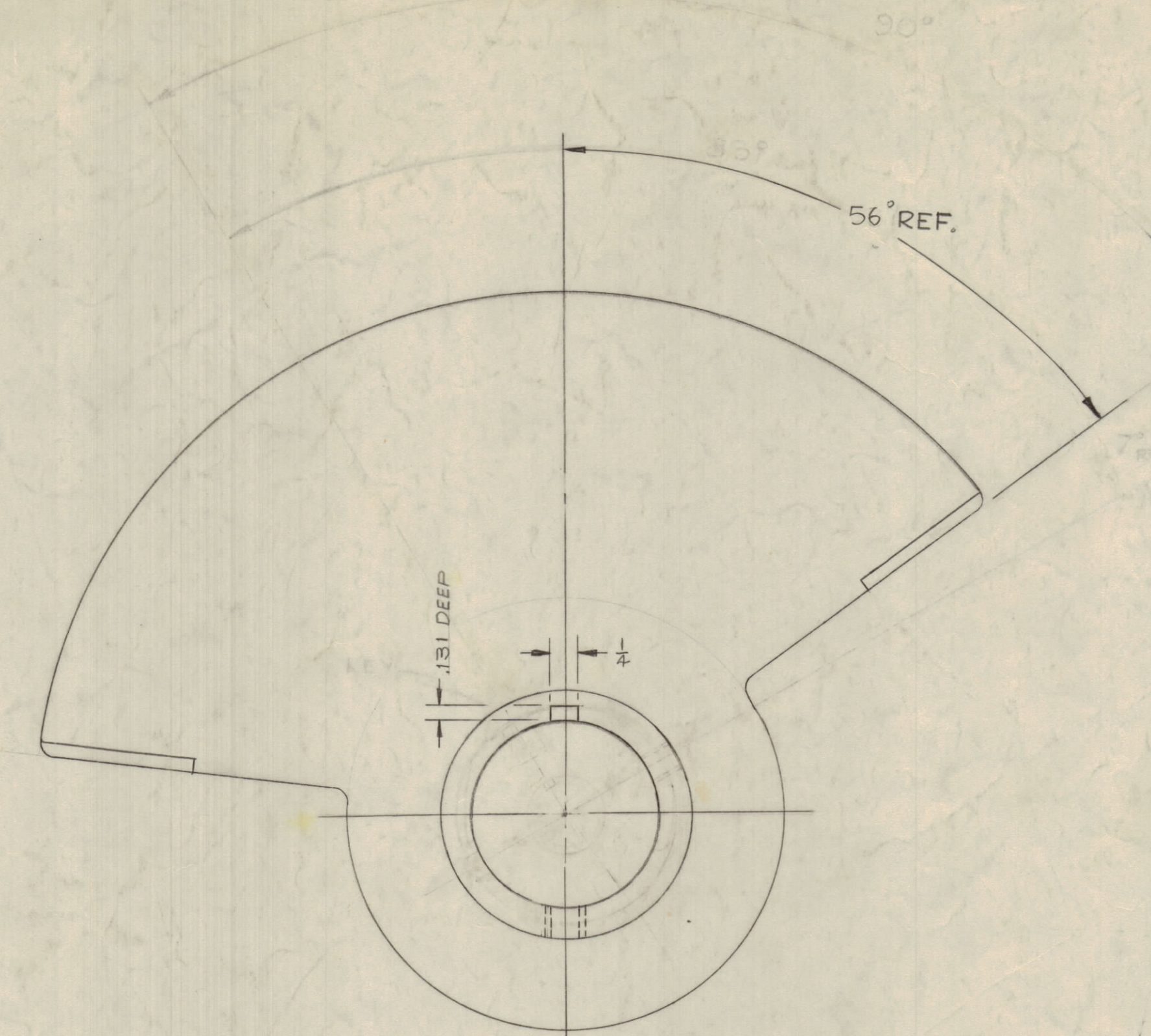


IF IT IS FOUND DESIRABLE TO CHANGE ANY TOLERANCE OR OTHER DETAIL SPECIFIED ON THIS DRAWING NOTIFY THE PURCHASER PROMPTLY.  
 MAXIMUM ALLOWABLE TOLERANCES HAVE BEEN DETERMINED AND DEVIATIONS WILL BE CAUSE FOR REJECTION. REMOVE ALL BURRS AND SHARP EDGES

**NOTICE TO PERSONS RECEIVING THIS DRAWING**  
 THE TECHNICAL MATERIEL CORPORATION claims proprietary right in the material disclosed hereon. This drawing is issued in confidence for engineering information only and may not be reproduced or used to manufacture anything shown hereon without permission from THE TECHNICAL MATERIEL CORPORATION to the user. This drawing is loaned for mutual assistance and is subject to recall at any time.  
 Property of:  
 THE TECHNICAL MATERIEL CORPORATION  
 MAMARONECK, NEW YORK



NOTE: RELATIONSHIP OF KEY & TAPPED HOLES OF SHAFT TO EDGE OF PLATE

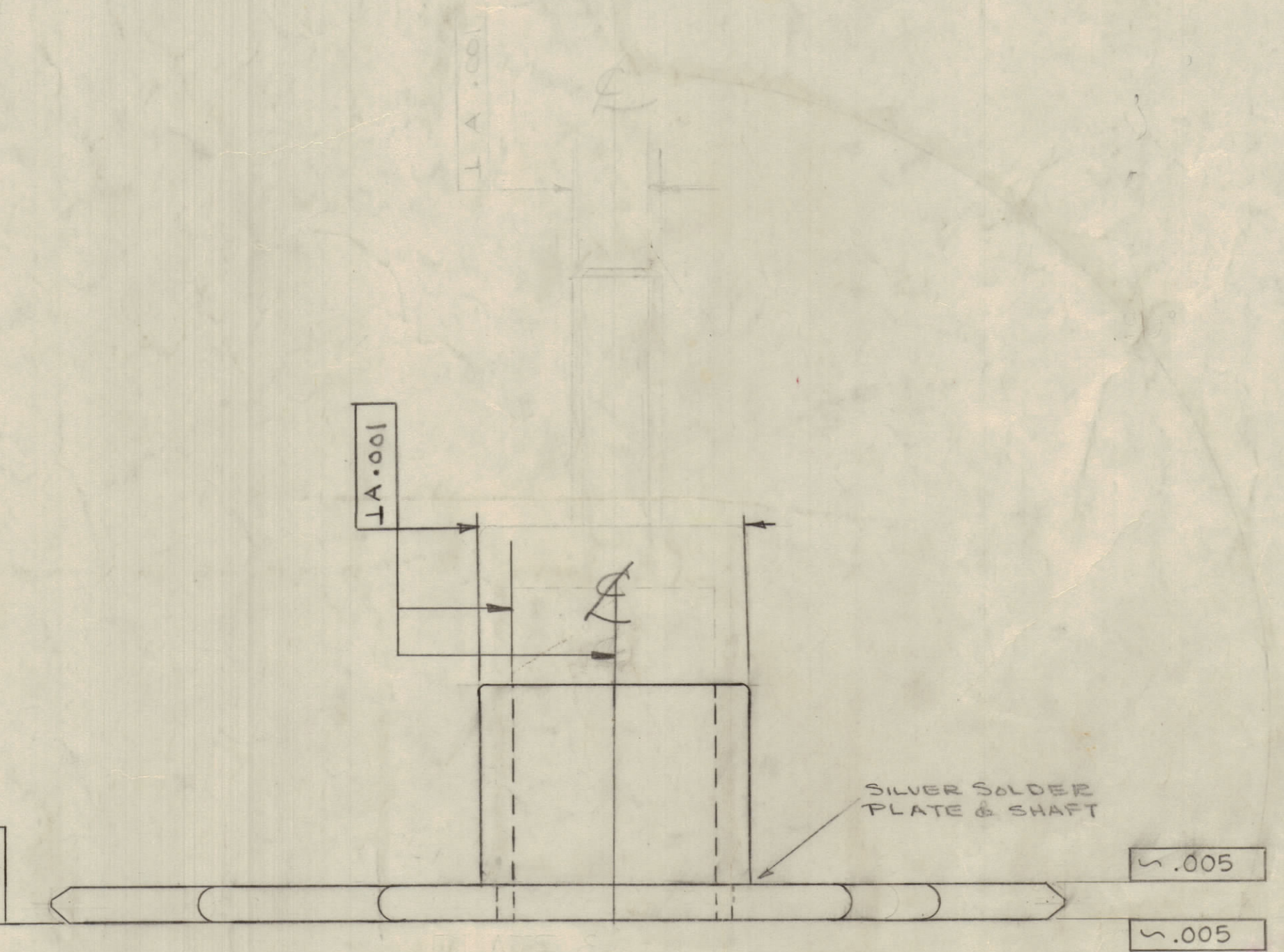
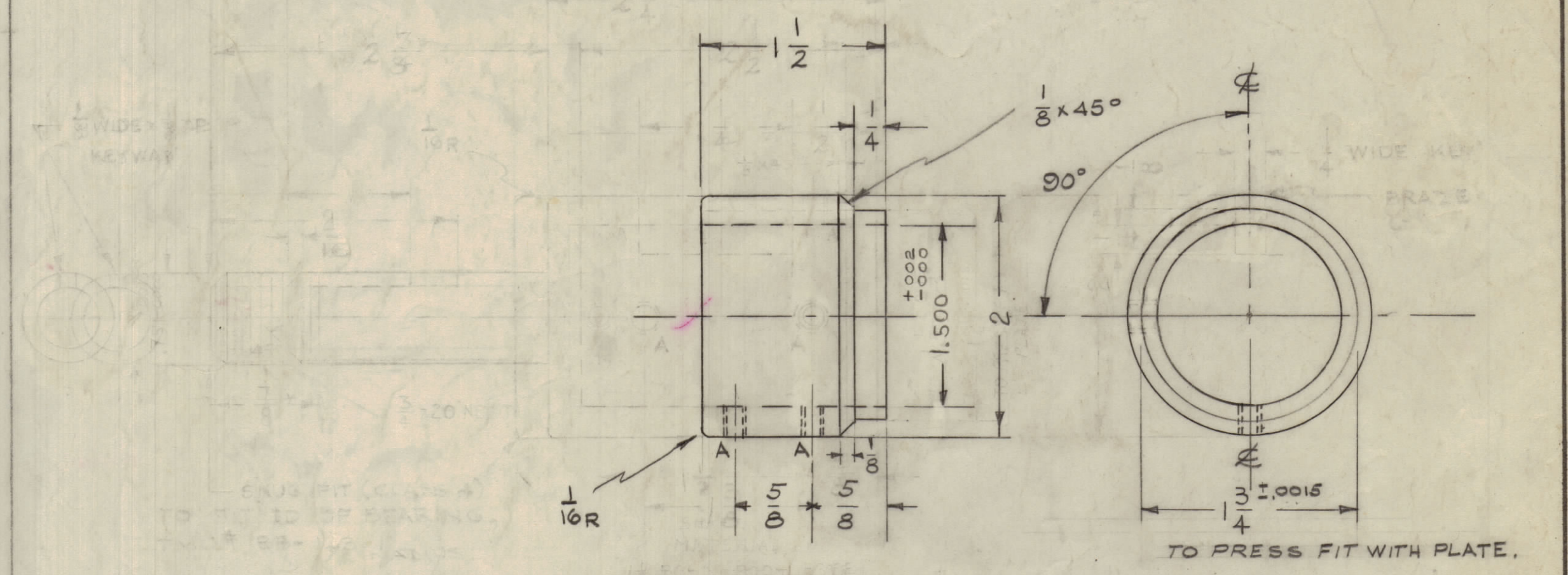


PLATE & SHAFT ASSY  
 FINISH ~ RHODIUM .000025

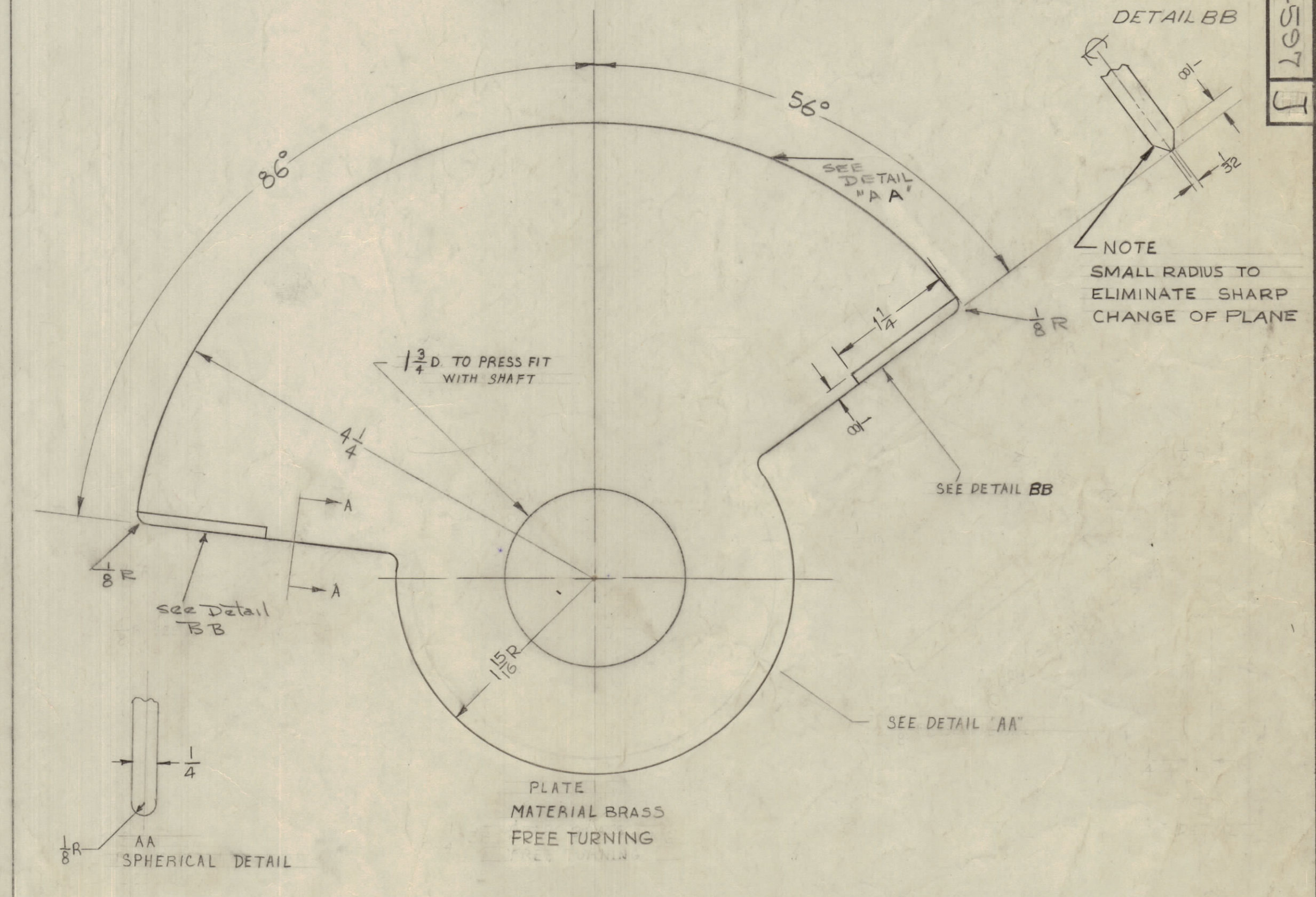
NOTE TO MAINTAIN INDICATED TOLS. PIECES SHOULD BE MACHINED AFTER BRAZING (INCL. PLATING IN TOLS)

J	2	ON SPHERICAL DETAIL 'AA' DIM. 1/4 ADDED	9/11/63	9914	Delmas	JR	AK
H	1	SMALL RADIUS NOTE ADDED	10/11/63	3053	AK	AK	AK
G	1	FLATNESS TOL. (-) ADDED	10/1/60	3125	JR	AK	AK
F	2	1/8" R ON ROTOR WAS 1/16"	7/27/60	3023	JR	AK	AK
E	4	ON ROTOR 56° WAS 53° 28' WAS 53° ON KEYWAY 56° REF. WAS 52° REF.	8/9/60	2650	RJ	AK	AK
D	1	KEYWAY FROM HUB DELETED	4-14-60	2147	JR	AK	AK
C	1	KEYWAY 3° OFF EDGE WAS 7° OFF EDGE	3-21-60		JR	AK	AK
B	1	V SHAPE 1/8" X 1/8" EDGES OF ROTOR PLATE WERE ROUNDED	3-17-60		JR	AK	AK
A	2	MCHG. - NOTE ADDED	2/23/60		JR	AK	AK
	1	COMPLETE REDESIGN	2/23/60		JR	AK	AK
	1	TOLERANCES ADDED & SHAFT RE-DIM.	2/23/60		JR	AK	AK
	1	REVISED SHAFT	2/23/60		JR	AK	AK
	1	ADD NEW DIM.	2/23/60		JR	AK	AK
	1	DIM. 2 1/8 WAS 1 15/16	2/23/60		JR	AK	AK
	1	DIM. 2 1/2 WAS 2 1/16	2/23/60		JR	AK	AK

ISSUE ITEM CHANGED FROM DATE CN. NO. DRAFTS CHECKER ENG. APP.  
 TOLERANCES SCALE: FULL  
 ALL DEC. DIM. ± 1/64  
 OTHERS ANGULAR DIM. ± 0.5°  
 DRILL PUNCH, COMMERCIAL STOCK SIZES AND MANUFACTURERS TOLERANCES ARE NOT INCLUDED.



SHAFT MATERIAL  
 BRASS ~ FREE TURNING



REF: PM-640 ~ (HUB BAND SW., TOP)

REQ. ITEM	PART NO.	DESCRIPTION	SYMBOL
SEE DETAIL		THE TECHNICAL MATERIEL CORP. MAMARONECK, NEW YORK	
STOCK SIZE			
SEE DETAIL		ROTOR, PA BANDSW.	
MATERIAL	WEIGHT PER PC.		
TYPE & TEMPER			
DRAWN	ELEC. DES. APP.	MECH. DES. APP.	
HEAT TREAT. SPEC.	CHECKED	FINAL APPROVAL	
SEE ASSY. DETAIL			PM-597 J
FINISH & SPEC. NO.			

AX-203 GPT-40K 1-26-60  
 MODEL PROJECT NO. ASSY. NO. DATE  
 USED ON