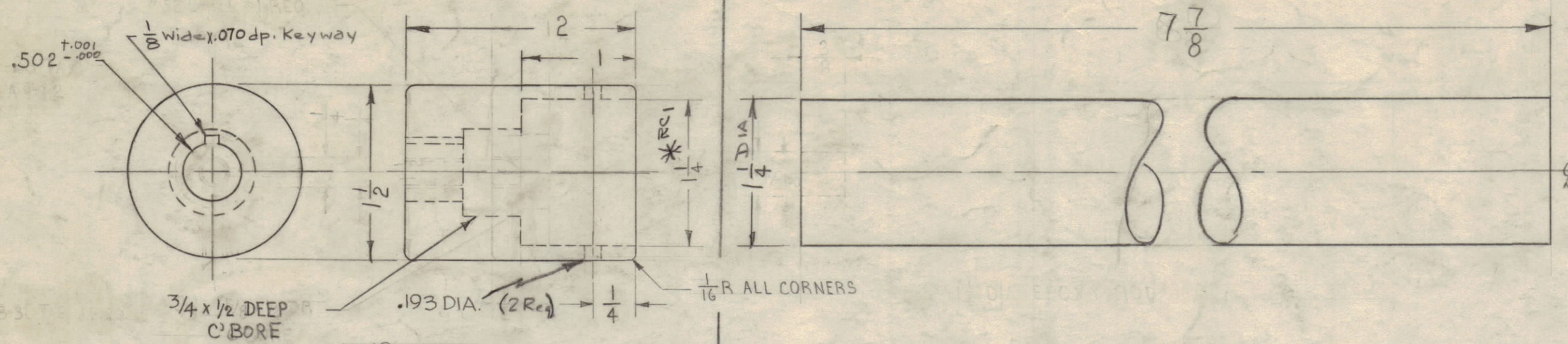


IF IT IS FOUND DESIRABLE TO CHANGE ANY TOLERANCE OR OTHER DETAIL SPECIFIED ON THIS DRAWING NOTIFY THE PURCHASER PROMPTLY.

MAXIMUM ALLOWABLE TOLERANCES HAVE BEEN DETERMINED AND DEVIATIONS WILL BE CAUSE FOR REJECTION. REMOVE ALL BURRS AND SHARP EDGES.

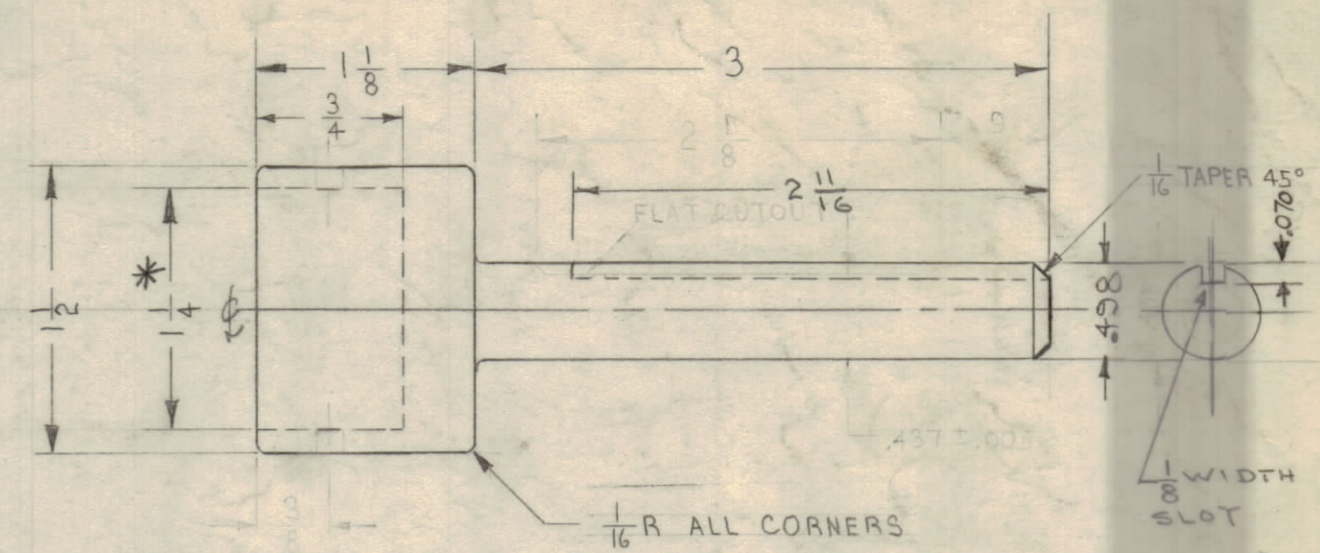
RC-1 CLOSE SLIDING FIT

* PRESS FIT



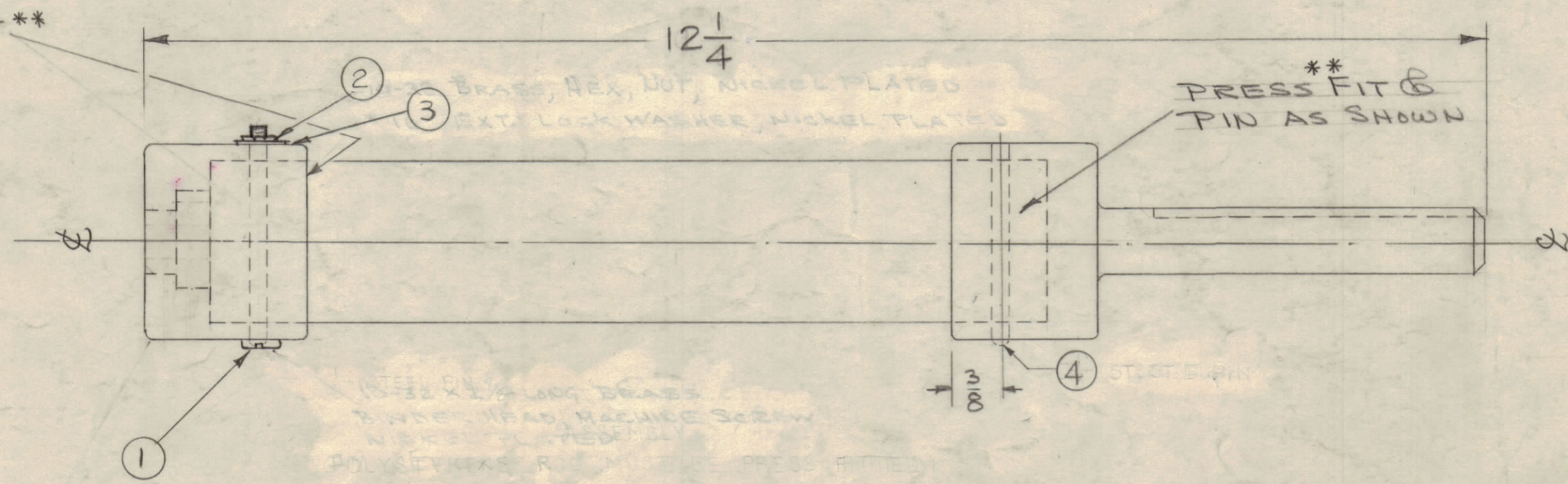
HUB (TOP)
MAT'L: 1/2 STAINLESS STEEL (GRADE 303)
S104-PASSIVATED

SHAFT
MAT'L: 1/4 GRADE 7 SILICONE GLASS



HUB SHAFT (BOTTOM)
MAT'L: 1/2 STAINLESS STEEL (GRADE 303)
PASSIVATED

NOTE:
RC 1 = CLOSE SLIDING FIT **
ASSEMBLE AS SHOWN



** WHEN ASSEMBLED, HUBS & SHAFT
MUST BE CONCENTRIC TO C/L WITHIN
WITHIN .015 (TIR)

PM-588

L	ITEMS 1, 2, 3 & 4 ADDED NOTES FOR MTG SCREW, NUT, WASHER & PIN DELETED	3-3-67	17888	G.D.L.	OK	OK
K	ON PICTORIAL NOTE ** & ON FINA ASSY CENTRO LINE ADDED	7-9-63	9486	G.D.L.	OK	OK
J	.193 DIA. WAS 13/64 DIA.	4-25-62	6623	EE	OK	OK
H	ON ASSY 10-32 X 1-7/8 LG WAS 10-32 X 2-1/4 LG BINDER H. SCREW	7-17-61	5271	G.D.L.	OK	OK
G	SLIDING FIT NOTE CLARIFIED	6-27-61	5117	DLG	RU	OK
F	ON HUB SHAFT (BOTTOM) DIA. .072 WAS 1/16	1-4-61	3856	M.A.F.	OK	OK
E	ON HUB (TOP) KEYWAY WAS 1/8 WIDE X 1/16 DP ON SHAFT SILICONE GLASS WAS EPOXY	12-8-60	3678	RU.	OK	OK
D	3 IN HUB, Keyway Added					
D	2 IN HUB 3/4 DIA DP WAS 5/8 X 1/16 DP	3-22-60				
D	1 IN HUB .502 DIA WAS 1/4-28 TAP					
C	3 5/8 X 1/2 DP C'BORE ADDED					
C	2 #52 DRILL DELETED	3-15-60				
C	1 8-32 TAP DELETED					
B	1 "FITS" ADDED	2-23-60				
A	2 HUB WAS 1/4 HIGH					
A	1 SHAFT LENGTH WAS 8 3/4	2-15-60				

NOTICE TO PERSONS RECEIVING THIS DRAWING

THE TECHNICAL MATERIEL CORPORATION
proprietary right in the material disclosed herein.
This drawing is issued in confidence for engineering
information only and may not be reproduced or used
to manufacture anything shown herein without per-
mission from THE TECHNICAL MATERIEL CORPORA-
TION to the user. This drawing is loaned for your
assistance and is subject to recall at any time.

Property of:
THE TECHNICAL MATERIEL CORPORATION
MAMARONECK, NEW YORK

ALL OTHERS	DEC. DIM. ± FRAC. DIM. ± Y64 ANGULAR DIM. ±	DRILL, PUNCH, COMMERCIAL STOCK SIZES AND MANUFACTURERS TOLERANCES ARE NOT INCLUDED.
------------	---	---

3	AX-209	GPT-40K		1-23-60
REQ. PER UNIT	MODEL	PROJECT NO.	ASSY. NO.	DATE

1	4	PN115-1	PIN, GROOVED	
1	3	LWE10MRN	WASHER, LOCK, EXTERNAL	
1	2	NTH1032BN12	NUT, PLAIN HEX.	
1	1	SCBP1032BN28	SCREW, MACHINE	
REQ. ITEM	PART NO.	DESCRIPTION		SYMBOL
AS NOTED		THE TECHNICAL MATERIEL CORP. MAMARONECK, NEW YORK		
AS NOTED		SHAFT, CAPACITOR		
MATERIAL		INSULATED		
TYPE & TEMPER		W.S.	W.S.	W.S.
		DRAWN	ELEC. DES. APP.	MECH. DES. APP.
HEAT TREAT. SPEC.		CHECKED	FINAL APPROVAL	
AS NOTED		PM-588 L		
FINISH & SPEC. NO.				