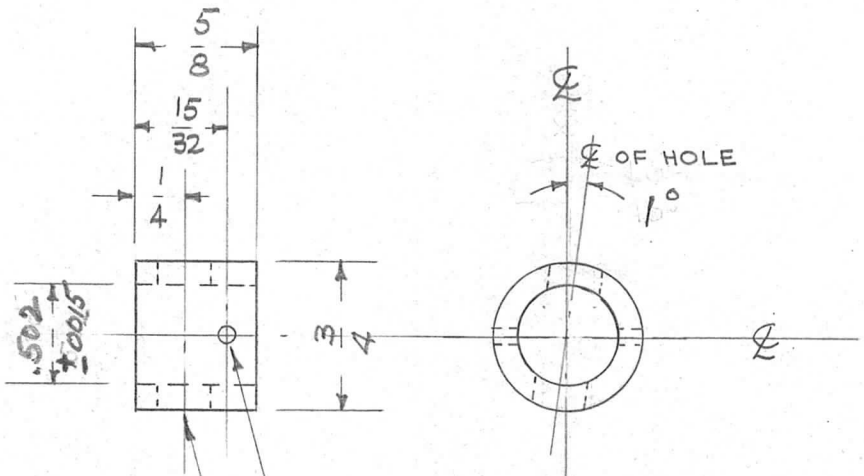


REQ. PER. UNIT	USED ON			PM-577
	MODEL	ASS'Y. NO.	DATE	
1	ATS-50(70)T02		6-12-59	



#51 DR. (.067 D.) DRILL THRU.
 17/64 (.265 D) DRILL THRU.

FINISH:
 S-245 SILVER PLATE .0005
 S-423 IRIDITE 18 P SILVER KOTE

REQ.	ITEM	PART NO.	DESCRIPTION		SYMBOL										
		3/4 O.D.	THE TECHNICAL MATERIEL CORP.												
		STOCK SIZE	MAMARONECK, NEW YORK												
		BRASS	COLLAR, SHAFT												
		MATERIAL													
ISSUE	ITEM	CHANGED FROM	DATE	CH. NO.	DRAFTS	CHECKER	ENG. APP.	HALF HARD	HEAT TREAT. SPEC.	TORILLO	6-12-59	AWD	AWD		
TOLERANCES			SCALE:			TYPE & TEMPER		FINISH & SPEC. NO.		DRAWN		CHECKED			
DEC. DIM. ±			MAXIMUM ALLOWABLE TOLERANCES HAVE BEEN DETERMINED AND ANY DEVIATIONS WILL BE CAUSE FOR REJECTION. REMOVE ALL BURRS AND SHARP EDGES			SEE NOTE				ELEC. DES. APP.		MECH. DES. APP.			
FRAC. DIM. ± 1/64															
ANGULAR DIM. ± .1°															
												PM-577			