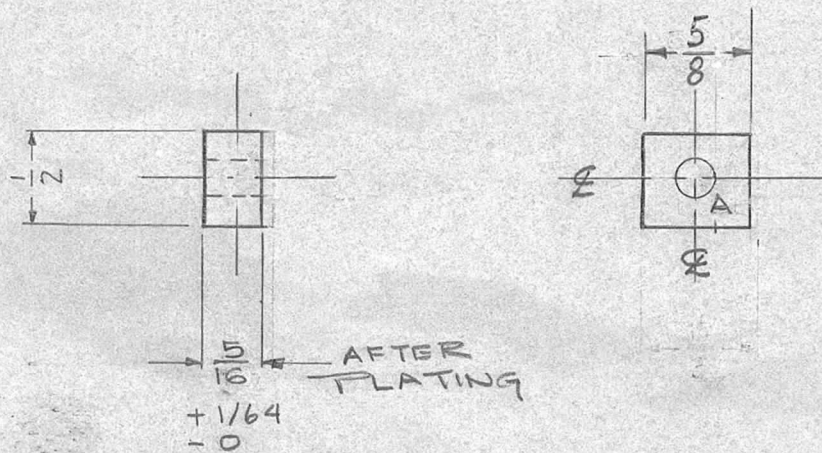


REQ. PER UNIT	USED ON			PM-544 E
	MODEL	ASS'Y. NO.	DATE	
1	GPT-10K	AR-109	2-2-59	

A - 3/16 (.187) DIA.

1 REQ'D



NOTICE TO PERSONS RECEIVING THIS DRAWING

THE TECHNICAL MATERIEL CORPORATION claims proprietary right in the material disclosed hereon. This drawing is issued in confidence for engineering information only and may not be reproduced or used to manufacture anything shown hereon without permission from THE TECHNICAL MATERIEL CORPORATION to the user. This drawing is loaned for mutual assistance and is subject to recall at any time.

Property of:
THE TECHNICAL MATERIEL CORPORATION
MAMARONECK, NEW YORK

E	1	+ 1/16 - 0 ADDED TO 5/16 DIM	2-25-65	13585	RS	Q/S	Q/S
D	1	5/16 DIM WAS 11/32	3-28-63	8672	RS	Q/S	Q/S
C	1	5/8 DIM. WAS 9/16	10-13-60	3187	RS	Q/S	Q/S
B		1/32 WAS 3/8	4-1-60	1958	RS	Q/S	Q/S
A		COMPLETE REVISION	1/18/59	1505	RS	Q/S	Q/S

ISSUE	ITEM	CHANGED FROM	DATE	CH. NO.	DRAFTS	CHECKER	ENG. APP.
TOLERANCES			SCALE:				
DEC. DIM. ±			MAXIMUM ALLOWABLE TOLERANCES HAVE BEEN DETERMINED AND ANY DEVIATIONS WILL BE CAUSE FOR REJECTION.				
FRAC. DIM. ±			REMOVE ALL BURRS AND SHARP EDGES				
ANGULAR DIM. ±							

REQ.	ITEM	PART NO.	DESCRIPTION		SYMBOL
			THE TECHNICAL MATERIEL CORP. MAMARONECK, NEW YORK		
			STOCK SIZE		
			RECTANGULAR BRASS BAR		
			MATERIAL		
			1/2 HARD		
			TYPE & TEMPER	HEAT TREAT. SPEC.	
			FINISH & SPEC. NO.	ELEC. DES. APP.	MECH. DES. APP.

PLUNGER SUPPORT
HV SHORTING RELAY

JCB
fde
Q/S
Q/S
PM-544 E