

HOLES

REQ'D

A - 13/64 (.203) DIA

3

\* B - 1/2 (.500) DIA.

1

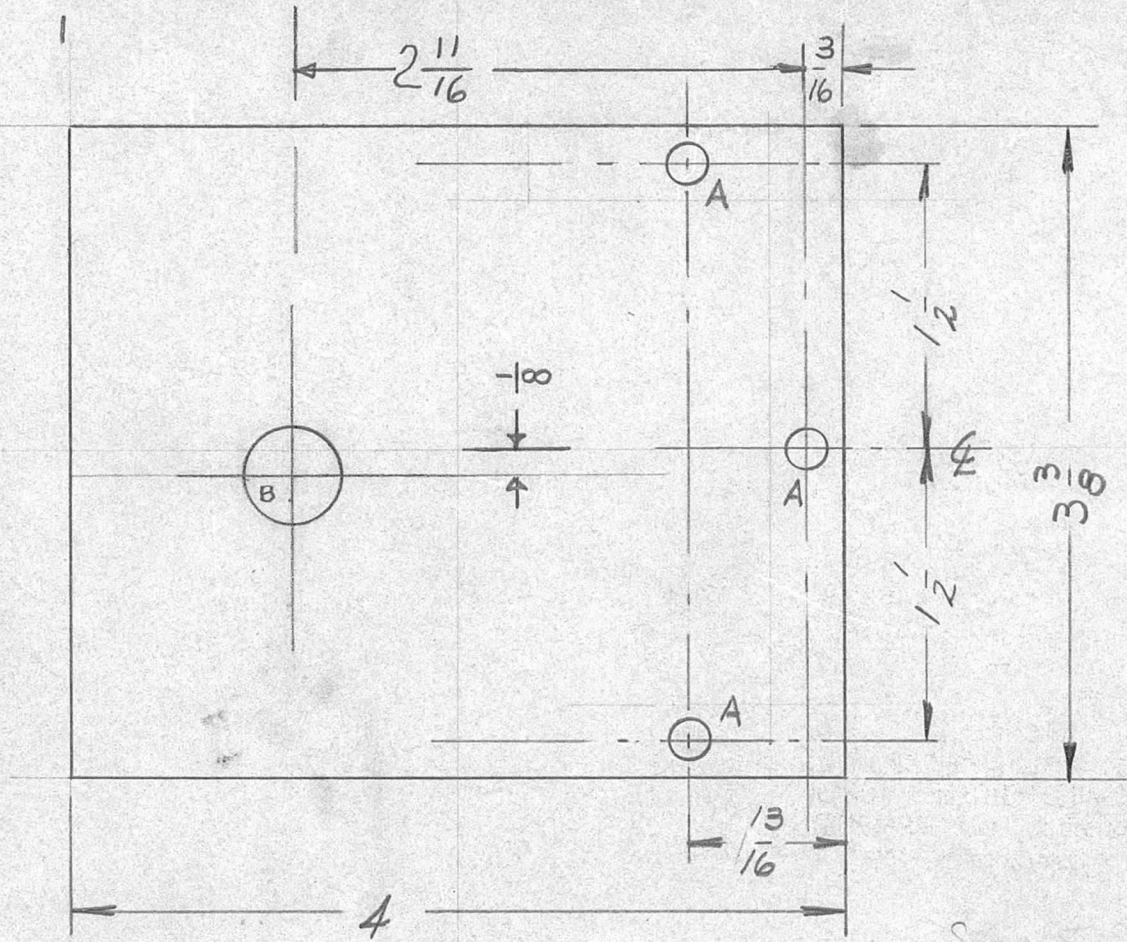
\* = PRESS FIT WITH  
BB-118-B

NOTICE TO PERSONS RECEIVING THIS DRAWING

THE TECHNICAL MATERIEL CORPORATION claims proprietary right in the material disclosed hereon. This drawing is issued in confidence for engineering information only and may not be reproduced or used to manufacture anything shown hereon without permission from THE TECHNICAL MATERIEL CORPORATION to the user. This drawing is loaned for mutual assistance and is subject to recall at any time.

Property of:

THE TECHNICAL MATERIEL CORPORATION  
MAMARONECK, NEW YORK



REQ. PER UNIT	USED ON		
	MODEL	ASS'Y. NO.	DATE
1	GPT-10000	RF DECK	2-5-59

PM-541 A

ISSUE	ITEM	CHANGED FROM	DATE	CH. NO.	DRAFTS	CHECKER	ENG. APP.	REQ.	ITEM	PART NO.	DESCRIPTION	SYMBOL	
A		UPDATED & CLARIFIED SEE EMN. 10790	1/22/64	10790						3/16 THICK STOCK SIZE	THE TECHNICAL MATERIEL CORP. MAMARONECK, NEW YORK		
										ALUMINUM MATERIAL	SHAFT SUPPORT R.F. BANDSWITCH		
TOLERANCES			SCALE: FULL					2024-T4		DRAWN: RLW		CHECKED: RB	
DEC. DIM. ± .005 FRAC. DIM. ± 1/64 ANGULAR DIM. ± 1/2°			MAXIMUM ALLOWABLE TOLERANCES HAVE BEEN DETERMINED AND ANY DEVIATIONS WILL BE CAUSE FOR REJECTION. REMOVE ALL BURRS AND SHARP EDGES					IRIDITE FINISH & SPEC. NO.		DRAWN: RLW		CHECKED: RB	
											PM-541	A	