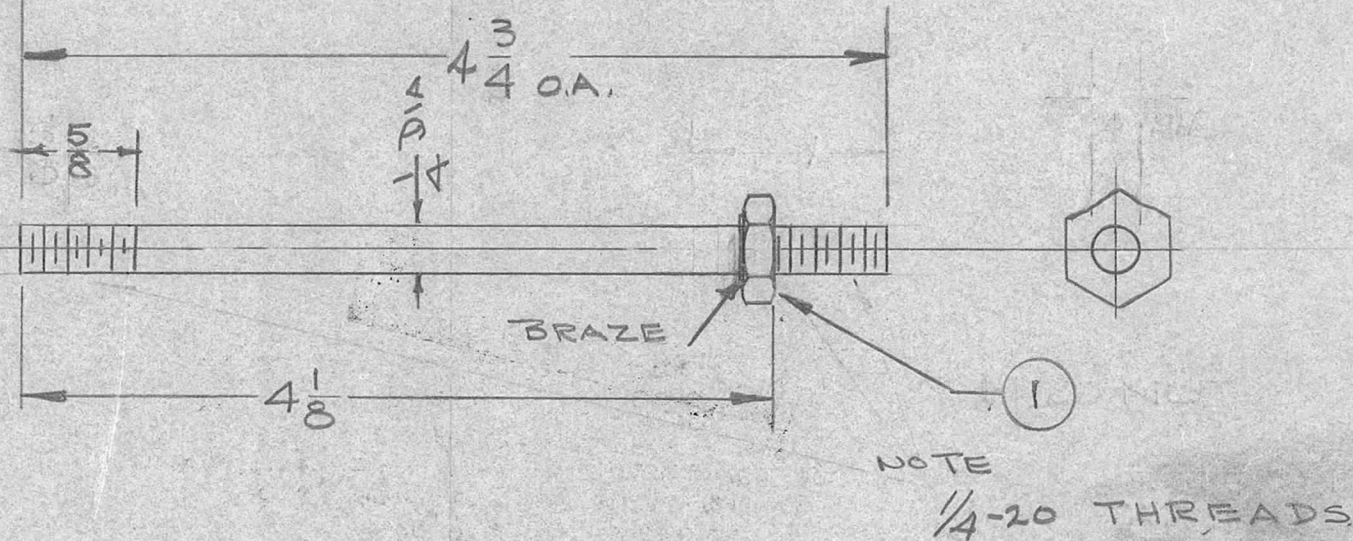


NOTICE TO PERSONS RECEIVING THIS DRAWING

THE TECHNICAL MATERIEL CORPORATION claims proprietary right in the material disclosed hereon. This drawing is issued in confidence for engineering information only and may not be reproduced or used to manufacture anything shown hereon without permission from THE TECHNICAL MATERIEL CORPORATION to the user. This drawing is loaned for mutual assistance and is subject to recall at any time.

Property of:

THE TECHNICAL MATERIEL CORPORATION  
MAMARONECK, NEW YORK



REQ. PER UNIT	USED ON		
	MODEL	ASS'Y. NO.	DATE
2	GPT-10K	AR-109	1-29-59
2	GPT-10K( ) 5 AX-138	A-1690	12-10-63

PM-537 D

ISSUE	ITEM	CHANGED FROM	DATE	CH. NO.	DRAFTS	CHECKER	ENG. APP.	REQ. ITEM	PART NO.	DESCRIPTION	SYMBOL									
D	1	UPDATED & CLARIFIED	11/10/63	10523	JCB	JCB	JCB	1	NTH2520BR14	NUT, HEXAGON										
C		DIM. CLARIFIED ITEM 1 WAS NTH2520BR14	12/10/59	1648	JCB	JCB	JCB	1/4 DIA ROD			THE TECHNICAL MATERIEL CORP. MAMARONECK, NEW YORK SHAFT, PLUNGER SHORTING RELAY									
B	1	DIMENSIONS CLARIFIED 1/4-20 NUT ADDED	11-17-59	1505	JCB	JCB	JCB	STOCK SIZE												
A	1	4 5/8 O.A. WAS 4 1/2 O.A.	5/6/59	1	JCB	JCB	JCB	BRASS												
TOLERANCES			SCALE:			Free Machining			TORILLO JCB											
DEC. DIM. ±			MAXIMUM ALLOWABLE TOLERANCES HAVE BEEN DETERMINED AND ANY DEVIATIONS WILL BE CAUSE FOR REJECTION. REMOVE ALL BURRS AND SHARP EDGES			TYPE & TEMPER			HEAT TREAT. SPEC.			DRAWN			CHECKED			FINAL APPROVAL		
FRAC. DIM. ± 1/64						NICKEL PLATE									ARB			PM-537 D		
ANGULAR DIM. ±						FINISH & SPEC. NO.						ELEC. DES. APP			MECH. DES. APP					