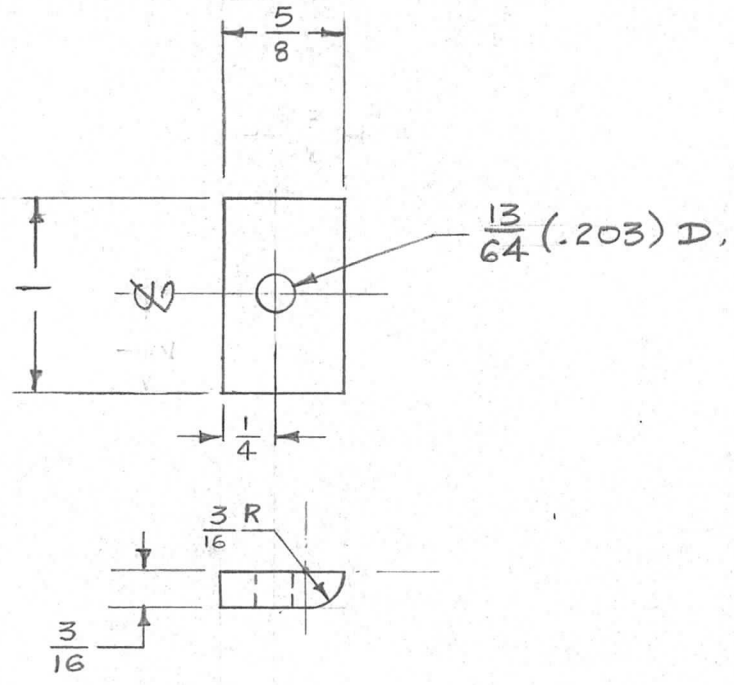


REQ. PER UNIT	USED ON		
	MODEL	ASS'Y. NO.	DATE
2	TER-5000	A-1404	3-22-57
2	TER-5000	A-1405	3-22-57

PM-434 B



ISSUE	ITEM	CHANGED FROM	DATE	CH. NO.	DRAFTS	CHECKER	ENG. APP.
B	2	1/4 DIM. ADDED	7.6.64	11730	WB	<i>[Signature]</i>	<i>[Signature]</i>
	1	VERTICAL ϕ DELETED					
A	1	3/16R. WAS 3/8R.	9/14/61	5572	LL	AB	XB

REQ. ITEM	PART NO.	DESCRIPTION	SYMBOL
		3/16 THK. X 1" WIDE	
		STOCK SIZE	
		BRASS	
		MATERIAL	
		HALF HARD	
		63-22-57	
		DRAWN	
		CHECKED	
		FINISH & SPEC. NO.	
		ELEC. DES. APP.	
		MECH. DES. APP.	

THE TECHNICAL MATERIEL CORP.
MAMARONECK, NEW YORK

END PLATE, STRAP,
SMALL (TER-5000)

DEC. DIM. \pm
FRAC. DIM. \pm 1/64
ANGULAR DIM. \pm

SCALE: _____
MAXIMUM ALLOWABLE TOLERANCES HAVE BEEN DETERMINED AND ANY DEVIATIONS WILL BE CAUSE FOR REJECTION.
REMOVE ALL BURRS AND SHARP EDGES

PM-434 B