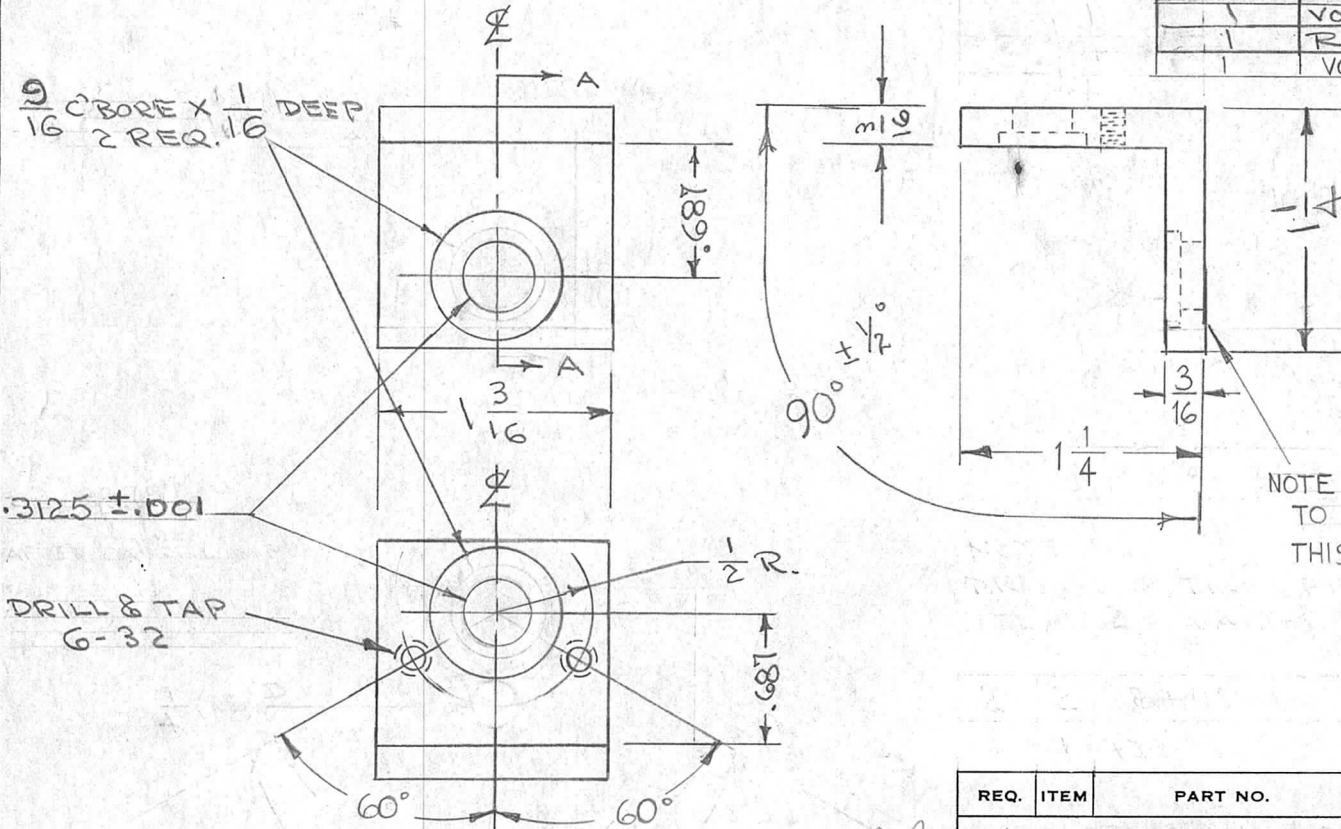


IF IT IS FOUND DESIRABLE TO CHANGE ANY TOLERANCE OR OTHER DETAIL SPECIFIED ON THIS DRAWING NOTIFY THE PURCHASER PROMPTLY.

PM-301 H

MAXIMUM ALLOWABLE TOLERANCES HAVE BEEN DETERMINED AND DEVIATIONS WILL BE CAUSE FOR REJECTION. REMOVE ALL BURRS AND SHARP EDGES

REQ. PER UNIT	USED ON			
	MODEL	PROJECT NO.	ASS'Y. NO.	DATE
1	PMO-1	285		7-23-54
1	PMO-2	285		7-23-54
1	RTF			1-25-56
1	VOX-1,2			4-11-57
1	RTF-2	F/P		11-20-58
1	VOX-5			6-27-62



NOTE;  
TO OBTAIN 90° ANGLE MILL THIS SIDE ONLY.

H	1	DWG. NO. WAS A-827	6-27-62	6470	W.A.F.	Jho	
G	1	FIN. S404 WAS S101	12-4-59	1001	W.A.F.	Jho	EMIN
F	1	ITEM 2 WAS BB-108	5/8/58	G	Jho	Jho	
E	1	VOX-1,2 ADDED	7/11/57	5	Jho	Jho	
D	1	1/4" HOLE DELETED	9/19/56	4	COD	Jho	W.C.
C	1	1/4 WAS 15/32	4/11/56	3	COD	Jho	W.C.
B	1	C'BORE WAS 1/2	1-25-56	2	Jho	Jho	W.C.
A	1	1/4" HOLE ADDED	1-12-55	1	COD	Jho	W.C.

ISSUE	ITEM	CHANGED FROM	DATE	CN. NO.	DRAFTS	CHECKER	ENG. APP.
TOLERANCES				SCALE			
ALL OTHERS		DEC. DIM. ± .0005 FRAC. DIM. ± 1/64 ANGULAR DIM. ± 10		DRILL, PUNCH, COMMERCIAL STOCK SIZES AND MANUFACTURERS TOLERANCES ARE NOT INCLUDED.			

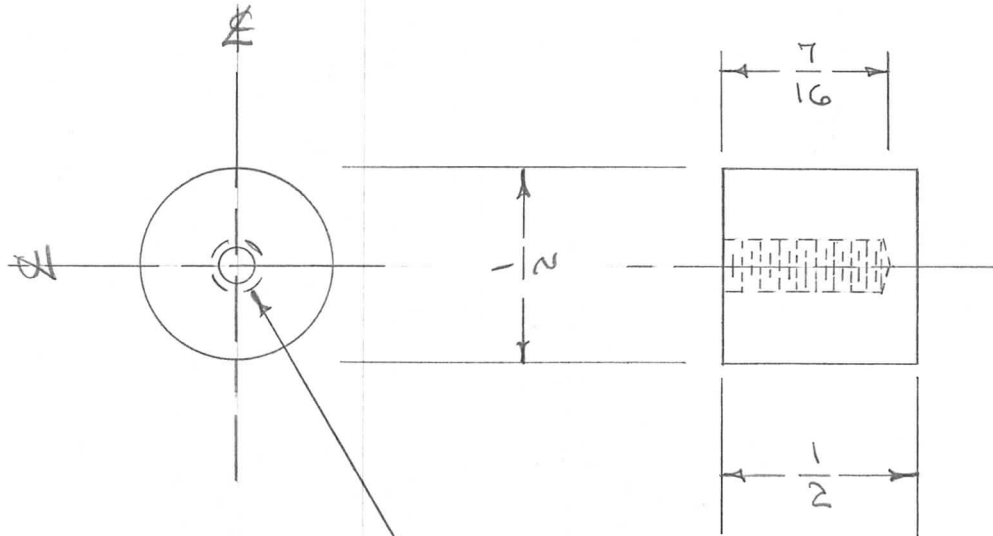
REQ.	ITEM	PART NO.	DESCRIPTION	SYMBOL
			3/16 X 1/4 X 1/4	
STOCK SIZE			THE TECHNICAL MATERIEL CORP. MAMARONECK, NEW YORK	
MATERIAL		WEIGHT PER PC.	GEAR HOUSING BRACKET ASSEMBLY (PMO-2)	
TYPE & TEMPER			6063-T5	
HEAT TREAT. SPEC.			C.O.D. 7-23-54	
FINISH & SPEC. NO.			S404 IRIDITE	
DRAWN			ELEC. DES. APP.	MECH. DES. APP.
CHECKED			FINAL APPROVAL	
			PM-301 H	

IF IT IS FOUND DESIRABLE TO CHANGE ANY TOLERANCE OR OTHER DETAIL SPECIFIED ON THIS DRAWING NOTIFY THE PURCHASER PROMPTLY.

PM-306

MAXIMUM ALLOWABLE TOLERANCES HAVE BEEN DETERMINED AND DEVIATIONS WILL BE CAUSE FOR REJECTION. REMOVE ALL BURRS AND SHARP EDGES

REQ. PER UNIT	USED ON			
	MODEL	PROJECT NO.	ASS'Y. NO.	DATE
12	RTB	158	A-169	7-29-54



DRILL & TAP 8-32 X 7/16 DEEP.

REQ.	ITEM	PART NO.	DESCRIPTION	SYMBOL
	1/2 ROD.		THE TECHNICAL MATERIEL CORP.	
	STOCK SIZE		MAMARONECK, NEW YORK	
	BRASS	#	CONTACT	
	MATERIAL	WEIGHT PER PC.		
	FREE TURNING			
	TYPE & TEMPER		C.D.D. 7-29-54	ARB
	#		DRAWN	ELEC. DES. APP. MECH. DES. APP.
	HEAT TREAT. SPEC.		FADE	OMP
	FINISH & SPEC. NO.		CHECKED	FINAL APPROVAL
				PM-306

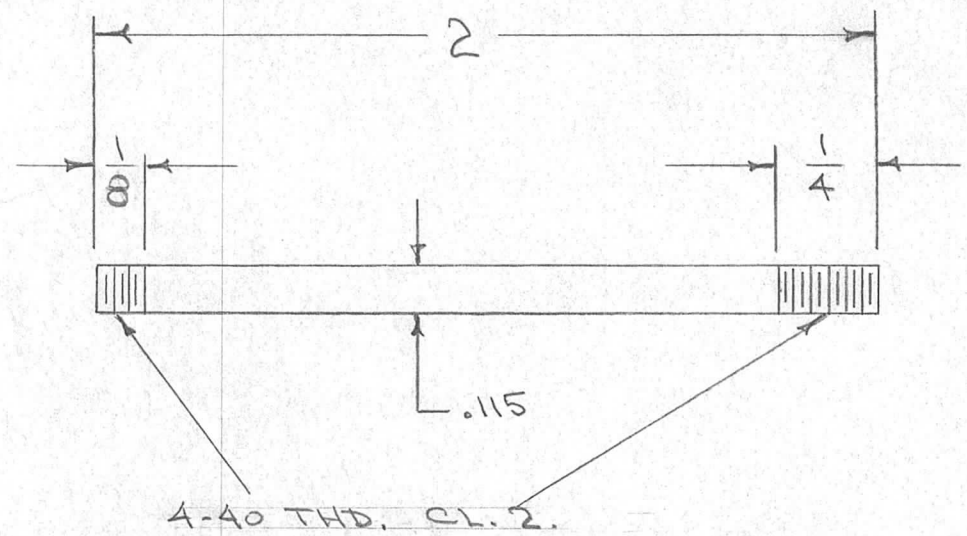
ISSUE	ITEM	CHANGED FROM	DATE	CN. NO.	DRAFTS	CHECKER	ENG. APP.
ALL OTHERS		DEC. DIM. ± FRAC. DIM. ± 1/64 ANGULAR DIM. ±					
TOLERANCES			SCALE				
			DRILL, PUNCH, COMMERCIAL STOCK SIZES AND MANUFACTURERS TOLERANCES ARE NOT INCLUDED.				

IF IT IS FOUND DESIRABLE TO CHANGE ANY TOLERANCE OR OTHER DETAIL SPECIFIED ON THIS DRAWING NOTIFY THE PURCHASER PROMPTLY.

PM-312 B

MAXIMUM ALLOWABLE TOLERANCES HAVE BEEN DETERMINED AND DEVIATIONS WILL BE CAUSE FOR REJECTION. REMOVE ALL BURRS AND SHARP EDGES

REQ. PER UNIT	USED ON			
	MODEL	PROJECT NO.	ASS'Y. NO.	DATE
1	PMO-1	285		1-25-55
1	PMO-2	285		"
1	VOX-1	291		"
1	VOX-2	291		"
1	RTF			2-1-56
1	RTF-2	F/P		11-20-58



REQ.	ITEM	PART NO.	DESCRIPTION	SYMBOL
		#32(.115)	THE TECHNICAL MATERIEL CORP.	
		STOCK SIZE	MAMARONECK. NEW YORK	
		STEEL	PIN, DIAL LOCK	
		MATERIAL	(MAIN GEAR ASSY.)	
		WEIGHT PER PC.		
		DRILL ROD		
		TYPE & TEMPER	CDD 1-25-55	
			DRAWN	ELEC. DES. APP. MECH. DES. APP.
			HEAT TREAT. SPEC.	
		3-105 CAD. PLATE	CHECKED	FINAL APPROVAL
		.0002		
		FINISH & SPEC. NO.		

ISSUE	ITEM	CHANGED FROM	DATE	CN. NO.	DRAFTS	CHECKER	ENG. APP.
B	1	FINISH ADDED	9/20/56	2	CDD	JAW	WJ
A	1	WAS THREADED ROD	1/5/54	1	CDD	JAW	WJ

TOLERANCES		SCALE
ALL OTHERS	DEC. DIM. ± FRAC. DIM. ± 1/64 ANGULAR DIM. ±	DRILL, PUNCH, COMMERCIAL STOCK SIZES AND MANUFACTURERS TOLERANCES ARE NOT INCLUDED.

PM-312 B

IF IT IS FOUND DESIRABLE TO CHANGE ANY TOLERANCE OR OTHER DETAIL SPECIFIED ON THIS DRAWING NOTIFY THE PURCHASER PROMPTLY.

PM-313

MAXIMUM ALLOWABLE TOLERANCES HAVE BEEN DETERMINED AND DEVIATIONS WILL BE CAUSE FOR REJECTION. REMOVE ALL BURRS AND SHARP EDGES

REQ  
PER  
UNIT

USED ON

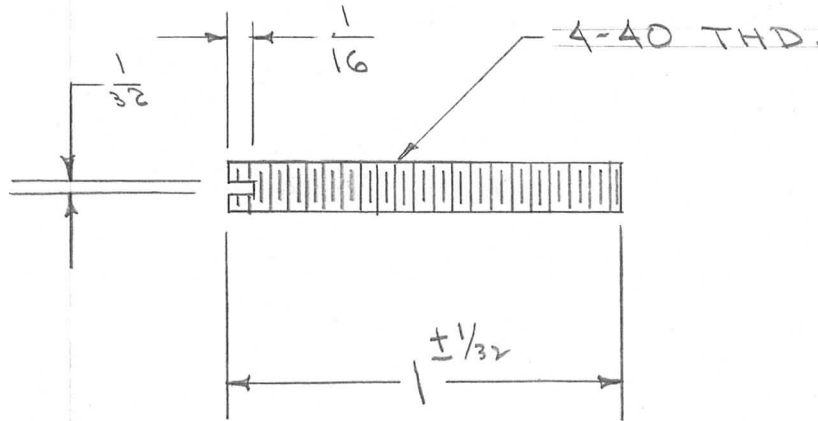
MODEL

PROJECT NO.

ASS'Y. NO.

DATE

1



REQ.	ITEM	PART NO.	DESCRIPTION	SYMBOL
			THE TECHNICAL MATERIEL CORP. MAMARONECK. NEW YORK	
		STAINLESS STEEL	PIN, CALIBRATE CONTROL	
		MATERIAL	P.M.O.	
		WEIGHT PER PC.		
		TYPE & TEMPER	C.D.D. 8-25-54	
		HEAT TREAT. SPEC.		
		FINISH & SPEC. NO.	S-104 PASSIVATE	

ISSUE ITEM CHANGED FROM DATE CN. NO. DRAFTS CHECKER ENG. APP.

TOLERANCES

SCALE

DRILL, PUNCH, COMMERCIAL STOCK SIZES AND MANUFACTURERS TOLERANCES ARE NOT INCLUDED.

ALL OTHERS

DEC. DIM.  $\pm$   
FRAC. DIM.  $\pm \frac{1}{64}$   
ANGULAR DIM.  $\pm$

DRAWN

ELEC. DES. APP.

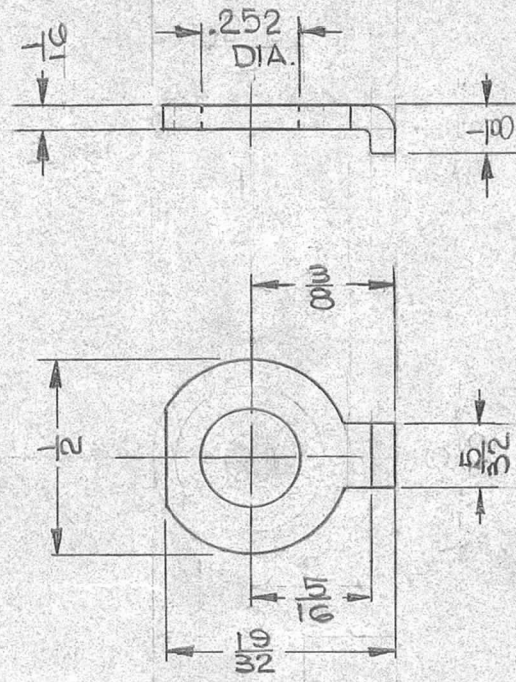
MECH. DES. APP.

CHECKED

FINAL APPROVAL

PM-313

REQ. PER UNIT	USED ON			PH-515 A
	MODEL	ASS'Y. NO.	DATE	
22	RTF-2	T/A	11-24-58	



ALL SURFACES TO BE SMOOTH & FREE OF ALL BURRS

ISSUE	ITEM	CHANGED FROM	DATE	CH. NO.	DRAFTS	CHECKER	ENG. APP.	REQ. ITEM	PART NO.	DESCRIPTION	SYMBOL	
								1/16		THE TECHNICAL MATERIEL CORP.		
								STOCK SIZE		MAMARONECK, NEW YORK		
A	2	"PM-51G MODIFIED" ADDED FLAT ADDED. 1/32 DIM WAS 5/8	7-1-63	9229				STAINLESS STEEL		WASHER, LOCK		
								MATERIAL				
TOLERANCES			SCALE:									
DEC. DIM. ± .0015			MAXIMUM ALLOWABLE TOLERANCES HAVE BEEN DETERMINED AND ANY DEVIATIONS WILL BE CAUSE FOR REJECTION:									
FRAC. DIM. ± 1/64			REMOVE ALL BURRS AND SHARP EDGES									
ANGULAR DIM. ±												
								TYPE & TEMPER	HEAT TREAT. SPEC.	DRAWN	CHECKED	FINAL APPROVAL
								FINISH & SPEC. NO.	ELEC. DES. APP	MECH. DES. APP	PH-515 A	A

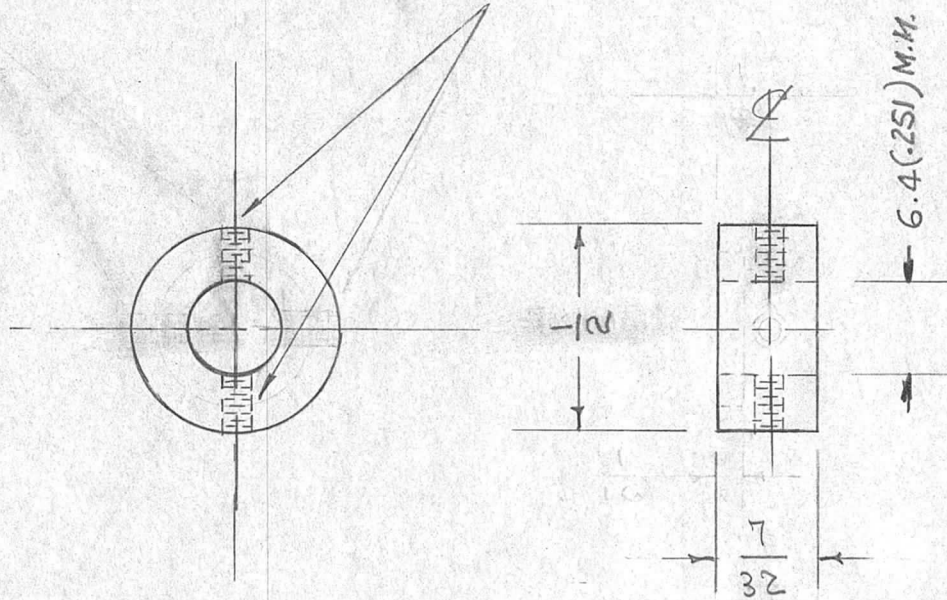
IF IT IS FOUND DESIRABLE TO CHANGE ANY TOLERANCE OR OTHER DETAIL SPECIFIED ON THIS DRAWING NOTIFY THE PURCHASER PROMPTLY.

PM-316 E

MAXIMUM ALLOWABLE TOLERANCES HAVE BEEN DETERMINED AND DEVIATIONS WILL BE CAUSE FOR REJECTION. REMOVE ALL BURRS AND SHARP EDGES

REQ. PER UNIT	USED ON			
	MODEL	PROJECT NO.	ASS'Y. NO.	DATE
2	PM0-1	285		8-27-54
2	PM0-2	285		8-27-54
3	VOX-1,2	291		1-12-55
4	RTF	271		2-1-56
2	GSB-1	459		9-21-56
4	RTF-2	F/P		11-20-58
2	RFB-1	GPT-10K		1-20-59
2	RFD-1	PAL-1K		6-22-59

DRILL & TAP 6-32 2 REQ.



NOTE:  
DIMENSIONS SHOWN ARE  
AFTER PLATING

ISSUE	ITEM	CHANGED FROM	DATE	CN. NO.	DRAFTS	CHECKER	ENG. APP.
E	1	7/32 WAS 1/4	9/14/56	5	COO	JAL	WJ
D	1	HOLES WERE 90° APART	3/20/56	4	B	JAL	WJ
C	1	RTF WAS 3 REQ	2/15/56	3	JAL	WJ	WJ
B	2	6-32 WAS 1 PER UNIT	3/28/56	2	PP	JAL	WJ
A	1	6.4 MM WAS .252/.253	10/21/54	1	JAL	WJ	WJ

REQ.	ITEM	PART NO.	DESCRIPTION	SYMBOL
		1/2 D	THE TECHNICAL MATERIEL CORP.	
		STOCK SIZE	MAMARONECK. NEW YORK	
		BRASS	COLLAR	
		MATERIAL WEIGHT PER PC.		
		FREE TURNING		
		TYPE & TEMPER	ADD. 8-27-54	
		HEAT TREAT. SPEC.	DRAWN	ELEC. DES. APP.
			CHECKED	MECH. DES. APP.
		FINISH & SPEC. NO.	FINAL APPROVAL	
		S-105 CADMIUM PLATE .0002	PM-316 E	

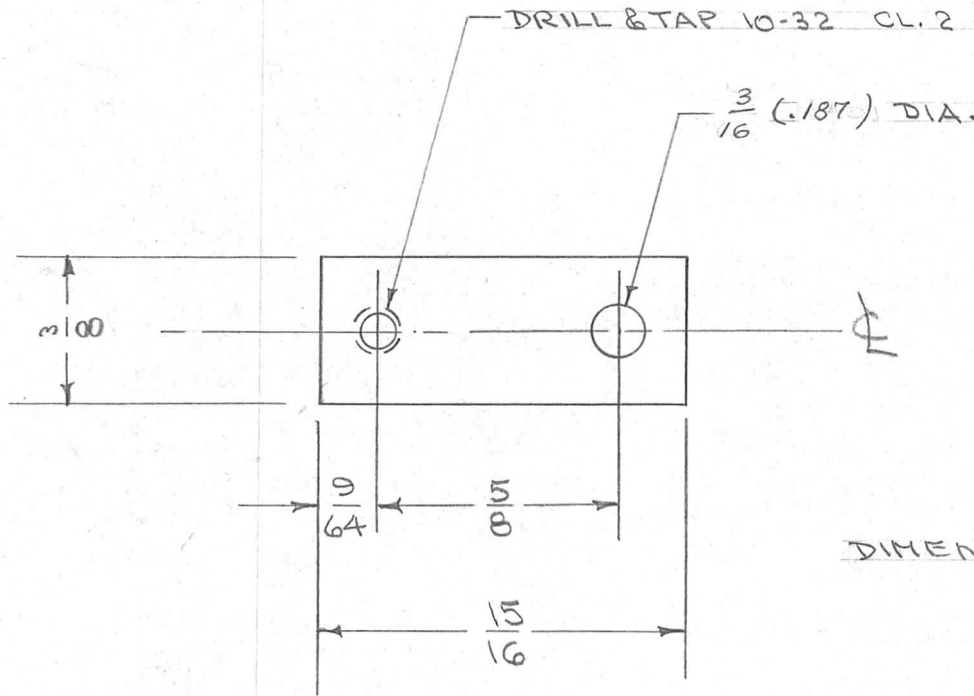
TOLERANCES	SCALE
ALL OTHERS DEC. DIM. ± FRAC. DIM. ± 1/64 ANGULAR DIM. ±	DRILL, PUNCH, COMMERCIAL STOCK SIZES AND MANUFACTURERS TOLERANCES ARE NOT INCLUDED.

IF IT IS FOUND DESIRABLE TO CHANGE ANY TOLERANCE OR OTHER DETAIL SPECIFIED ON THIS DRAWING NOTIFY THE PURCHASER PROMPTLY.

PM-317 A

MAXIMUM ALLOWABLE TOLERANCES HAVE BEEN DETERMINED AND DEVIATIONS WILL BE CAUSE FOR REJECTION. REMOVE ALL BURRS AND SHARP EDGES

REQ. PER UNIT	USED ON			
	MODEL	PROJECT NO.	ASS'Y. NO.	DATE
1	PMo-1	285		9-1-54
1	PMo-2	285		9-1-54
1	VOX-1,2	291		1-12-55
1	RTF			2-1-56
1	RTF-2	F/P		11-20-58



DIMENSIONS ARE AFTER PLATING.

REQ.	ITEM	PART NO.	DESCRIPTION	SYMBOL
			Y8 THICK	
			STOCK SIZE	
	STEEL	#	STOP, CALIBRATE CONTROL	
	MATERIAL	WEIGHT PER PC.	(MAIN GEAR ASSY.)	
			COLD ROLLED	
			TYPE & TEMPER	
			HEAT TREAT. SPEC.	
			S-105 CADMIUM PLATE .0003	
			FINISH & SPEC. NO.	
			THE TECHNICAL MATERIEL CORP. MAMARONECK. NEW YORK	
			STOP, CALIBRATE CONTROL	
			(MAIN GEAR ASSY.)	
			CD. 9-1-54	
			DRAWN	
			ELEC. DES. APP.	
			MECH. DES. APP.	
			CHECKED	
			FINAL APPROVAL	
			PM-317 A	

ISSUE	ITEM	CHANGED FROM	DATE	CN. NO.	DRAFTS	CHECKER	ENG. APP.
A	1	3/16 WAS 9/64 DIA.	3/15/55	1	P.B.	WOC	WOC

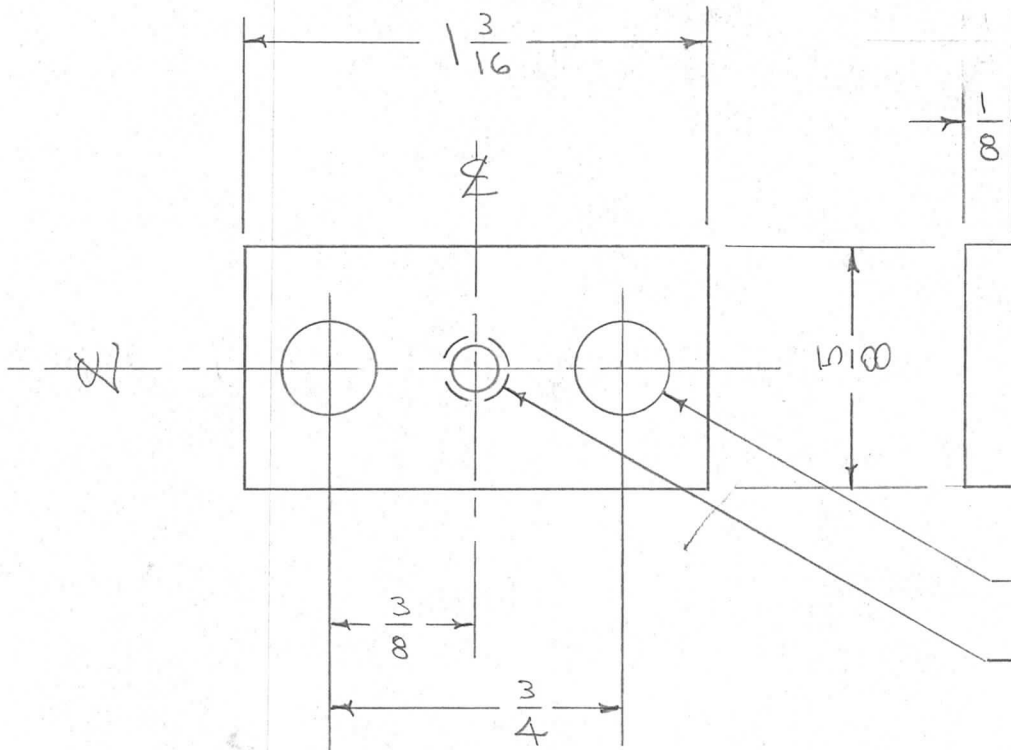
TOLERANCES		SCALE
ALL OTHERS	DEC. DIM. ± FRAC. DIM. ±1/64 ANGULAR DIM. ±	DRILL, PUNCH, COMMERCIAL STOCK SIZES AND MANUFACTURERS TOLERANCES ARE NOT INCLUDED.

IF IT IS FOUND DESIRABLE TO CHANGE ANY TOLERANCE OR OTHER DETAIL SPECIFIED ON THIS DRAWING NOTIFY THE PURCHASER PROMPTLY.

PM-318

MAXIMUM ALLOWABLE TOLERANCES HAVE BEEN DETERMINED AND DEVIATIONS WILL BE CAUSE FOR REJECTION. REMOVE ALL BURRS AND SHARP EDGES

REQ. PER UNIT	USED ON			
	MODEL	PROJECT NO.	ASS'Y. NO.	DATE
1	PMO-1	285		9-7-54
1	PMO-2	285		9-7-54
1	VOX-2	291		9-7-54
1	RTF			2-1-56
1	RTF-2	F/P		11-20-58



No. "F" DRILL (.257) D. 2 HOLES REQ.  
 DRILL & TAP 6-32 NC2 1 " "

REQ.	ITEM	PART NO.	DESCRIPTION	SYMBOL
		Y8 THICK	THE TECHNICAL MATERIEL CORP. MAMARONECK. NEW YORK	
		STOCK SIZE		
		ALUMINUM —H—		SPRING PLATE, CALIBRATE
		MATERIAL WEIGHT PER PC.	CONTROL (OSC ASSY.)	
		24S-T3	ORD. 9-7-54	WDE
		TYPE & TEMPER	DRAWN	ELEC. DES. APP.
		II	JADE	MECH. DES. APP.
		HEAT TREAT. SPEC.	CHECKED	FINAL APPROVAL
		S-101 CAUSTIC DIP S-107 LACQUER		PM-318
		FINISH & SPEC. NO.		

ISSUE	ITEM	CHANGED FROM	DATE	CN. NO.	DRAFTS	CHECKER	ENG. APP.
TOLERANCES			SCALE 2X				
ALL OTHERS	DEC. DIM. ± FRAC. DIM. ± 1/64 ANGULAR DIM. ±		DRILL, PUNCH, COMMERCIAL STOCK SIZES AND MANUFACTURERS TOLERANCES ARE NOT INCLUDED.				

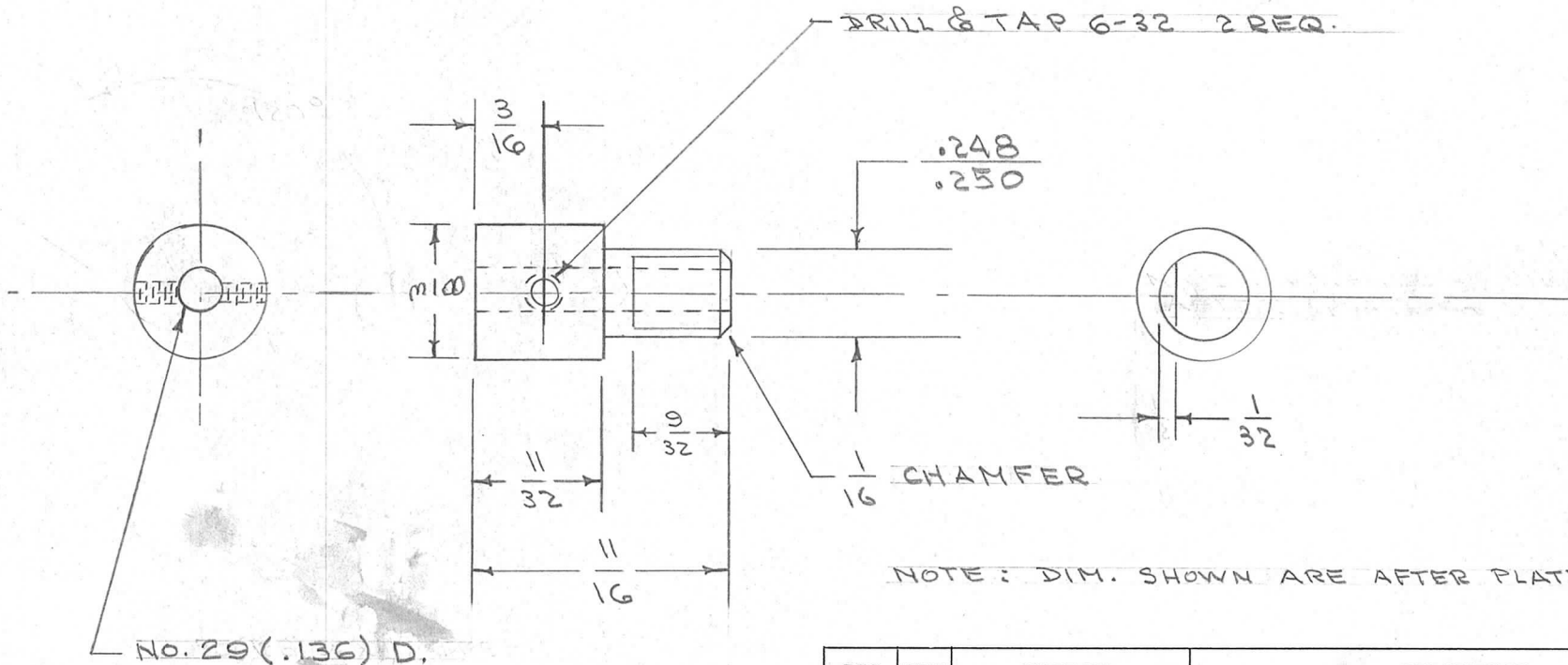


IF IT IS FOUND DESIRABLE TO CHANGE ANY TOLERANCE OR OTHER DETAIL SPECIFIED ON THIS DRAWING NOTIFY THE PURCHASER PROMPTLY.

PM-319 C

MAXIMUM ALLOWABLE TOLERANCES HAVE BEEN DETERMINED AND DEVIATIONS WILL BE CAUSE FOR REJECTION. REMOVE ALL BURRS AND SHARP EDGES

REQ. PER UNT	USED ON			
	MODEL	PROJECT NO.	ASS'Y. NO.	DATE
1	PMo-1	285		9-14-54
1	PMo-2	285		9-14-54
1	RTF			2-1-56
1	RTF-2	M/O		11-10-58



REQ.	ITEM	PART NO.	DESCRIPTION	SYMBOL
		3/8 D. ROD	THE TECHNICAL MATERIEL CORP. MAMARONECK. NEW YORK	
		STOCK SIZE		
		BRASS	COUPLING, MAIN SHAFT	
		MATERIAL	(OSC. ASSY.)	
		WEIGHT PER PC.		
		FREE TURNING		
		TYPE & TEMPER		
		HEAT TREAT. SPEC.		
		FINISH & SPEC. NO.		

C	1	No. 29D. WAS NO. 30D.	5/10/57	3	SC.	JAG	AL
B	1	#30 DRILL WAS 3/8 DEEP	9/18/56	2	CDD	JAG	AL
A	2	6-32 HOLE MOVED	10/1/54	1	CDD	JAG	AL
	1	FLAT ADDED					
ISSUE	ITEM	CHANGED FROM	DATE	CN. NO.	DRAFTS	CHECKER	ENG. APP.

TOLERANCES			SCALE				
ALL OTHERS	DEC. DIM.	± 1/64	DRILL, PUNCH, COMMERCIAL STOCK SIZES AND MANUFACTURERS TOLERANCES ARE NOT INCLUDED.				
	FRAC. DIM.	± 1/64					
	ANGULAR DIM.	±					

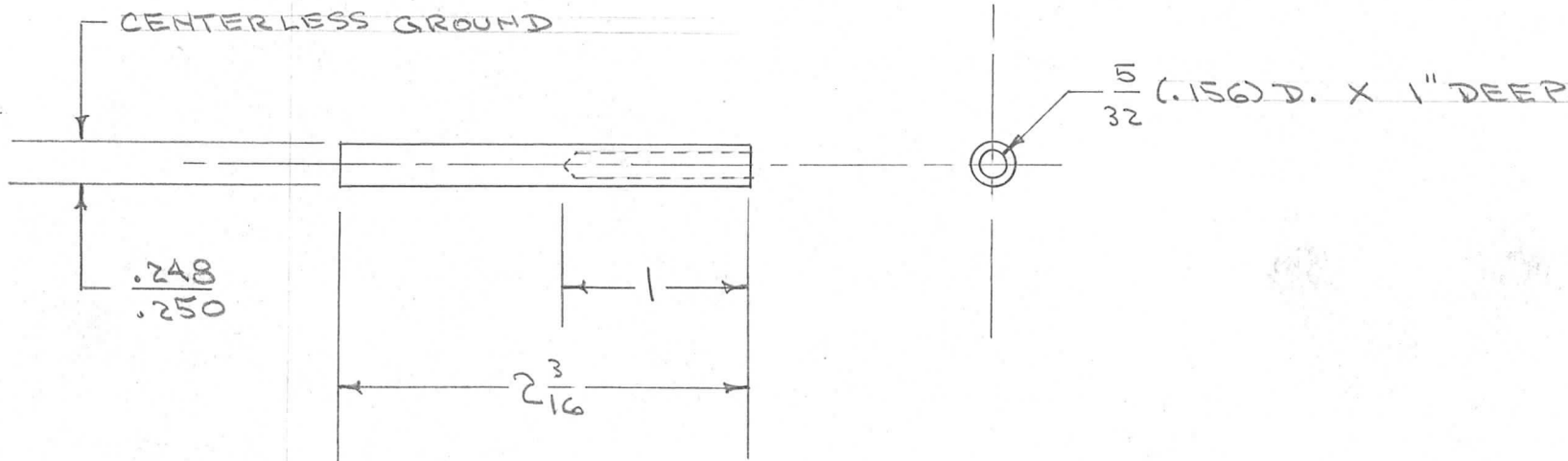
DRAWN	ELEC. DES. APP.	MECH. DES. APP.
CHECKED	FINAL APPROVAL	
	PM-319	C

IF IT IS FOUND DESIRABLE TO CHANGE ANY TOLERANCE OR OTHER DETAIL SPECIFIED ON THIS DRAWING NOTIFY THE PURCHASER PROMPTLY.

PM-320 A

MAXIMUM ALLOWABLE TOLERANCES HAVE BEEN DETERMINED AND DEVIATIONS WILL BE CAUSE FOR REJECTION. REMOVE ALL BURRS AND SHARP EDGES

REQ. PER UNIT	USED ON			
	MODEL	PROJECT NO.	ASS'Y. NO.	DATE
1	PM0-1	285		9-20-54
1	PM0-2	285		9-20-54
1	RTF			2-1-56
1	RTF-2	M/O		11-10-58



REQ.	ITEM	PART NO.	DESCRIPTION	SYMBOL
		9/32 ROD.	THE TECHNICAL MATERIEL CORP. MAMARONECK. NEW YORK	
		STOCK SIZE		
		ALUMINUM	COUPLING SHAFT, COIL	
		MATERIAL	SLUG P (OSC. ASSY.)	
		2020-T14		
		TYPE & TEMPER		
		H		
		HEAT TREAT. SPEC.		
		S-101 CAUSTIC DIP		
		S-107 LACQUER		
		FINISH & SPEC. NO.		

ISSUE	ITEM	CHANGED FROM	DATE	CN. NO.	DRAFTS	CHECKER	ENG. APP.
A	1	MAT. WAS YAD. BRASS		1	CSO	JAL	WOL

TOLERANCES	SCALE
ALL OTHERS DEC. DIM. $\pm$ FRAC. DIM. $\pm$ $\frac{1}{64}$ ANGULAR DIM. $\pm$	DRILL, PUNCH, COMMERCIAL STOCK SIZES AND MANUFACTURERS TOLERANCES ARE NOT INCLUDED.

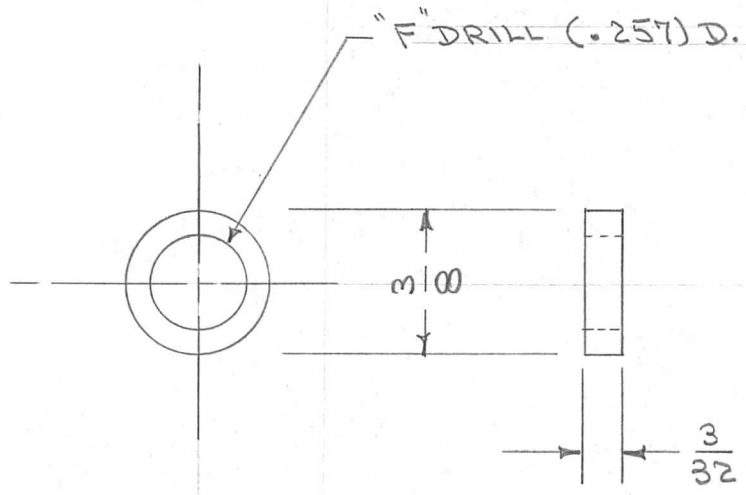
DRAWN	ELEC. DES. APP.	MECH. DES. APP.
JAL		WOL
CHECKED	FINAL APPROVAL	
	PM-320 A	

IF IT IS FOUND DESIRABLE TO CHANGE ANY TOLERANCE OR OTHER DETAIL SPECIFIED ON THIS DRAWING NOTIFY THE PURCHASER PROMPTLY.

PM-321

MAXIMUM ALLOWABLE TOLERANCES HAVE BEEN DETERMINED AND DEVIATIONS WILL BE CAUSE FOR REJECTION. REMOVE ALL BURRS AND SHARP EDGES

REQ. PER UNIT	USED ON			
	MODEL	PROJECT NO.	ASS'Y. NO.	DATE
1	PM0-1	285		10-5-54
1	PM0-2	285		10-5-54
1	RTF			2-1-56
1	RTF-2	F/P		11-20-58
2	CMD-1			2/24/61



DIM. SHOWN ARE AFTER PLATING

REQ.	ITEM	PART NO.	DESCRIPTION	SYMBOL
		3/8 DIA.	THE TECHNICAL MATERIEL CORP. MAMARONECK. NEW YORK	
		STOCK SIZE		
		BRASS	SPACER, MAIN SHAFT (MAIN GEAR ASSY.)	
		#		
		MATERIAL	C.D.D. 10-5-54	
		WEIGHT PER PC.		
		FREE TURNING		
		TYPE & TEMPER		
		#		
		HEAT TREAT. SPEC.		
		S-105 CADMIUM PLATE .0003		
		FINISH & SPEC. NO.		

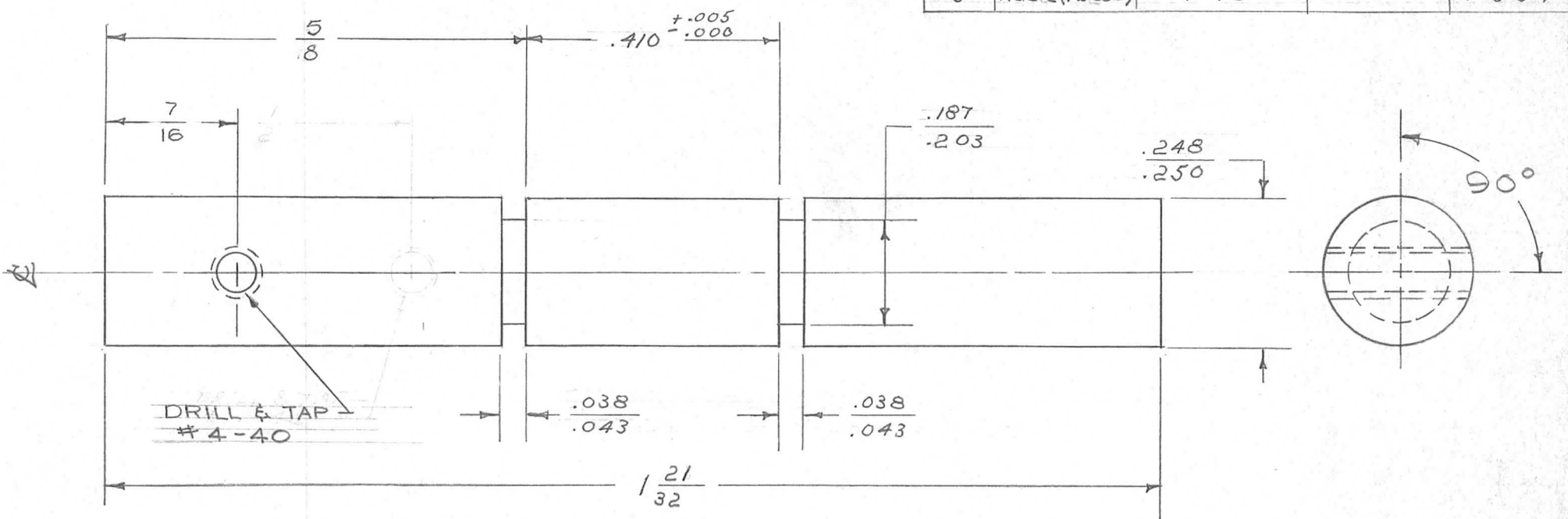
ISSUE	ITEM	CHANGED FROM	DATE	CN. NO.	DRAFTS	CHECKER	ENG. APP.
TOLERANCES			SCALE 11				
ALL OTHERS	DEC. DIM. ±	FRAC. DIM. ± 1/64	DRILL, PUNCH, COMMERCIAL STOCK SIZES AND MANUFACTURERS TOLERANCES ARE NOT INCLUDED.				
	ANGULAR DIM. ±						

IF IT IS FOUND DESIRABLE TO CHANGE ANY TOLERANCE OR OTHER DETAIL SPECIFIED ON THIS DRAWING NOTIFY THE PURCHASER PROMPTLY.

PM-322 B

MAXIMUM ALLOWABLE TOLERANCES HAVE BEEN DETERMINED AND DEVIATIONS WILL BE CAUSE FOR REJECTION. REMOVE ALL BURRS AND SHARP EDGES

REQ. PER UNIT	USED ON			
	MODEL	PROJECT NO.	ASS'Y. NO.	DATE
3	RSC-2 (ABCDE)	170		11-8-54



NOTE: DIM. SHOWN ARE AFTER PLATING

REQ.	ITEM	PART NO.	DESCRIPTION	SYMBOL
		— 11 —	THE TECHNICAL MATERIEL CORP.	
		STOCK SIZE	MAMARONECK. NEW YORK	
		BRASS — 11 —	SHAFT, CONDENSER EXTENSION	
		MATERIAL WEIGHT PER PC.	MODEL - RSC-2	
		FREE TURNING	P.B. 11-8-54	
		TYPE & TEMPER	K2	OM - 11/15/54
			DRAWN	ELEC. DES. APP.
			MECH. DES. APP.	
		HEAT TREAT. SPEC.	11/15/54	A.J.J.
		S-105 CAD. PLATE .0002	CHECKED	FINAL APPROVAL
		FINISH & SPEC. NO.		PM-322 B

ISSUE	ITEM	CHANGED FROM	DATE	CN. NO.	DRAFTS	CHECKER	ENG. APP.
B	1	Hole Relocated 7/16 WAS 1/2	7/15/57	2	SC	16	AK
A	2	1 21/32 WAS 1 23/32	4/26/57	1	SC.	J.H.B.	NO
	1	5/8 WAS 11/16					

TOLERANCES	SCALE	DRILL, PUNCH, COMMERCIAL STOCK SIZES AND MANUFACTURERS TOLERANCES ARE NOT INCLUDED.
ALL OTHERS DEC. DIM. ± FRAC. DIM. ± 1/64 ANGULAR DIM. ± 10	4 X	

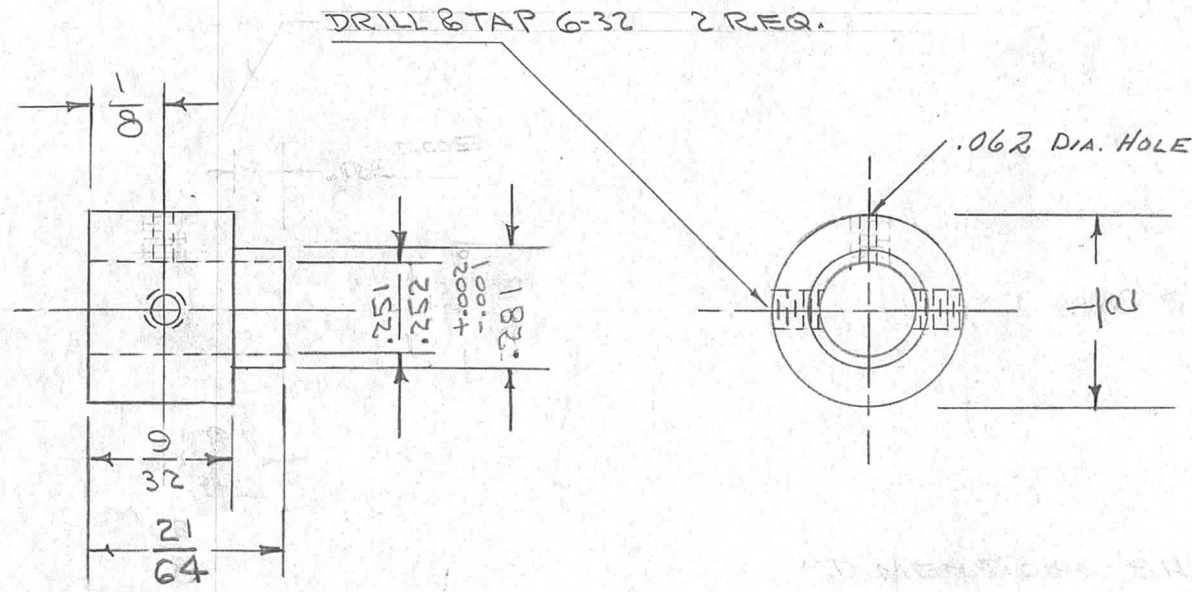
IF IT IS FOUND DESIRABLE TO CHANGE ANY TOLERANCE OR OTHER DETAIL SPECIFIED ON THIS DRAWING NOTIFY THE PURCHASER PROMPTLY.

PM-327

G

MAXIMUM ALLOWABLE TOLERANCES HAVE BEEN DETERMINED AND DEVIATIONS WILL BE CAUSE FOR REJECTION. REMOVE ALL BURRS AND SHARP EDGES

REQ PER UNIT	USED ON			
	MODEL	PROJECT NO.	ASS'Y. NO.	DATE
2	GPR	297	A-1023	12-6-54
1	GSB-1	MARK I	A-1023	5-7-57
1	SBE-1+2		A-1023	
1	RTF-2	POW/AMP		12-9-58
1	SBE-3	AP-100	A-1023	11-30-59



Q	1	ADDED .062 HOLE	12/9/58	569	avg	HR	
F	1	21/64 was 3/8   1/2 was 5/8	1/2/58	6	16	file	
E	1	STOCK SIZE WAS 1/2 D	4/4/57	5	16	file	
D	1	NOTE REMOVED	1/2/57	4	16	file	
C	1	HOLES WERE 90° APART	11/15/55	3	13	file	
B	1	9/32 & 1/8 ADDED	6/1/55	2	16	file	
A	2	.281 WAS .312	6/1/55	1	16	file	
A	1	.085 WAS .125	6/1/55	1	16	file	

REQ.	ITEM	PART NO.	DESCRIPTION	SYMBOL
		1/2 D. ROD.	THE TECHNICAL MATERIEL CORP.	
		STOCK SIZE	MAMARONECK. NEW YORK	
		BRASS	HUB, FREQ. DIAL	
		FREE TURNING		
		TYPE & TEMPER	C.D.D. 12-6-54	W02
		HEAT TREAT. SPEC.	###	
		FINISH & SPEC. NO.	G.T.O	
			CHECKED	FINAL APPROVAL
			PM-327	G

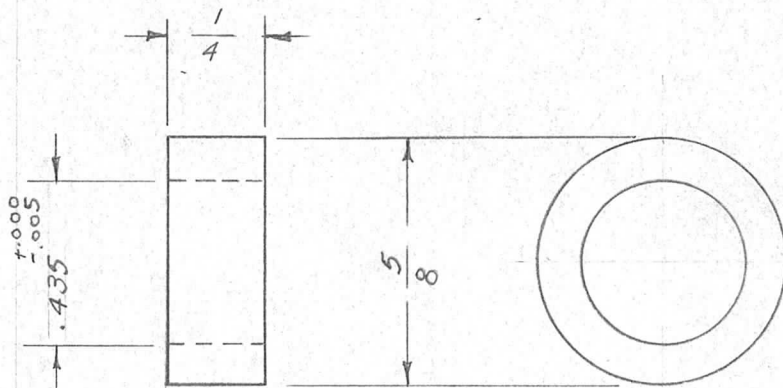
ISSUE	ITEM	CHANGED FROM	DATE	CN. NO.	DRAFTS	CHECKER	ENG. APP.
		TOLERANCES					
ALL OTHERS		DEC. DIM. ± .005					
		FRAC. DIM. ± 1/64					
		ANGULAR DIM. ±					
		SCALE					
		DRILL, PUNCH, COMMERCIAL STOCK SIZES AND MANUFACTURERS TOLERANCES ARE NOT INCLUDED.					

IF IT IS FOUND DESIRABLE TO CHANGE ANY TOLERANCE OR OTHER DETAIL SPECIFIED ON THIS DRAWING NOTIFY THE PURCHASER PROMPTLY.

PM-335

MAXIMUM ALLOWABLE TOLERANCES HAVE BEEN DETERMINED AND DEVIATIONS WILL BE CAUSE FOR REJECTION. REMOVE ALL BURRS AND SHARP EDGES

REQ. PER UNIT	USED ON			
	MODEL	PROJECT NO.	ASS'Y. NO.	DATE
2	VOX-1			2-28-55
2	VOX-2			2-28-55
2	RTF			2-3-56
2	PM6-1			4-24-56
2	PM6-2			4-24-56
2	RTF-2	F/P		11-20-58



REF: A-939 MITER GEAR ASSEMBLY

REQ.	ITEM	PART NO.	DESCRIPTION	SYMBOL
	#13 GAGE ROUND SEAMLESS MECH. TUBING		THE TECHNICAL MATERIEL CORP. MAMARONECK, NEW YORK	
	STEEL	—H—	COLLAR MITER GEAR	
	COLD DRAWN			
	TYPE & TEMPER		P.B. 2-28-55	WJF
	HEAT TREAT. SPEC.		DRAWN	ELEC. DES. APP. MECH. DES. APP.
	FINISH & SPEC. NO.	S-105 CAD. PLATE .0003	CHECKED	FINAL APPROVAL

ISSUE	ITEM	CHANGED FROM	DATE	CN. NO.	DRAFTS	CHECKER	ENG. APP.

TOLERANCES

SCALE

ALL OTHERS

DEC. DIM. ±  
FRAC. DIM. ±  
ANGULAR DIM. ±

DRILL, PUNCH, COMMERCIAL STOCK SIZES AND MANUFACTURERS TOLERANCES ARE NOT INCLUDED.

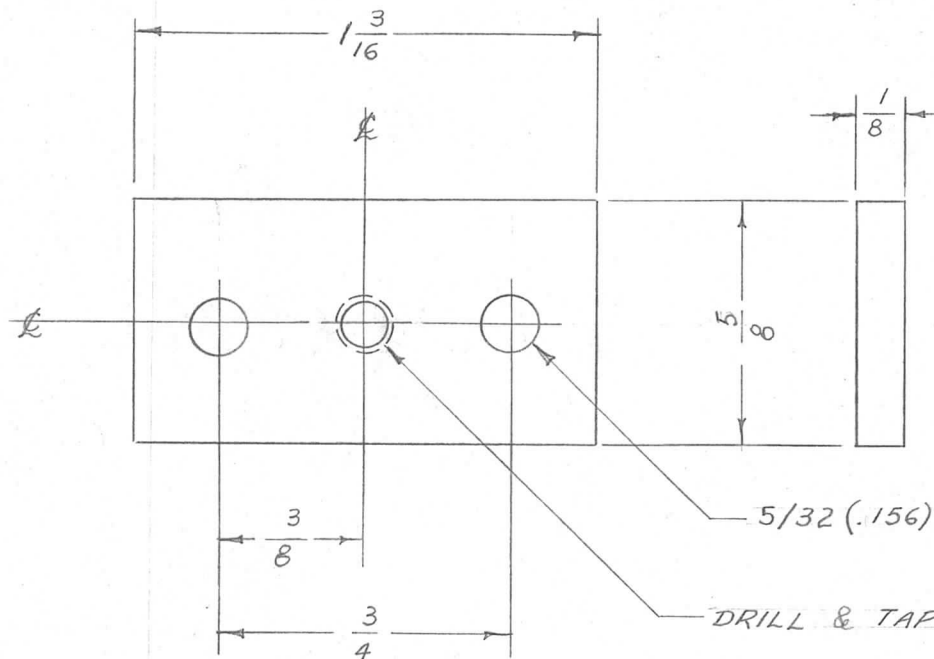
PM-335

IF IT IS FOUND DESIRABLE TO CHANGE ANY TOLERANCE OR OTHER DETAIL SPECIFIED ON THIS DRAWING NOTIFY THE PURCHASER PROMPTLY.

PM-337

MAXIMUM ALLOWABLE TOLERANCES HAVE BEEN DETERMINED AND DEVIATIONS WILL BE CAUSE FOR REJECTION. REMOVE ALL BURRS AND SHARP EDGES

REQ. PER UNIT	USED ON			
	MODEL	PROJECT NO.	ASS'Y. NO.	DATE
1	PMO-1	285		2-28-55
1	PMO-2	285		2-28-55
1	VOX-1			2-28-55
1	VOX-2			2-28-55
1	RTF			2-3-56
1	RTF-2			11-10-58
1	RTF-2	F/P		11/20/58



REQ.	ITEM	PART NO.	DESCRIPTION	SYMBOL
		1/8 THICK	THE TECHNICAL MATERIEL CORP. MAMARONECK, NEW YORK	
		STOCK SIZE		
		ALUMINUM	SPRING PLATE SUPPORT	
		MATERIAL	CALIBRATE CONTROL	
		WEIGHT PER PC.		
		24 S- T3		
		TYPE & TEMPER	P.P. 2-28-55	WDC
			DRAWN	ELEC. DES. APP.
			HEAT TREAT. SPEC.	MECH. DES. APP.
		S-101 CAUSTIC DIP	CHECKED	FINAL APPROVAL
		FINISH & SPEC. NO.		PM-337

ISSUE	ITEM	CHANGED FROM	DATE	CN. NO.	DRAFTS	CHECKER	ENG. APP.

TOLERANCES

SCALE

ALL OTHERS  
DEC. DIM. ±  
FRAC. DIM. ± 1/64  
ANGULAR DIM. ±

DRILL, PUNCH, COMMERCIAL STOCK SIZES AND MANUFACTURERS TOLERANCES ARE NOT INCLUDED.

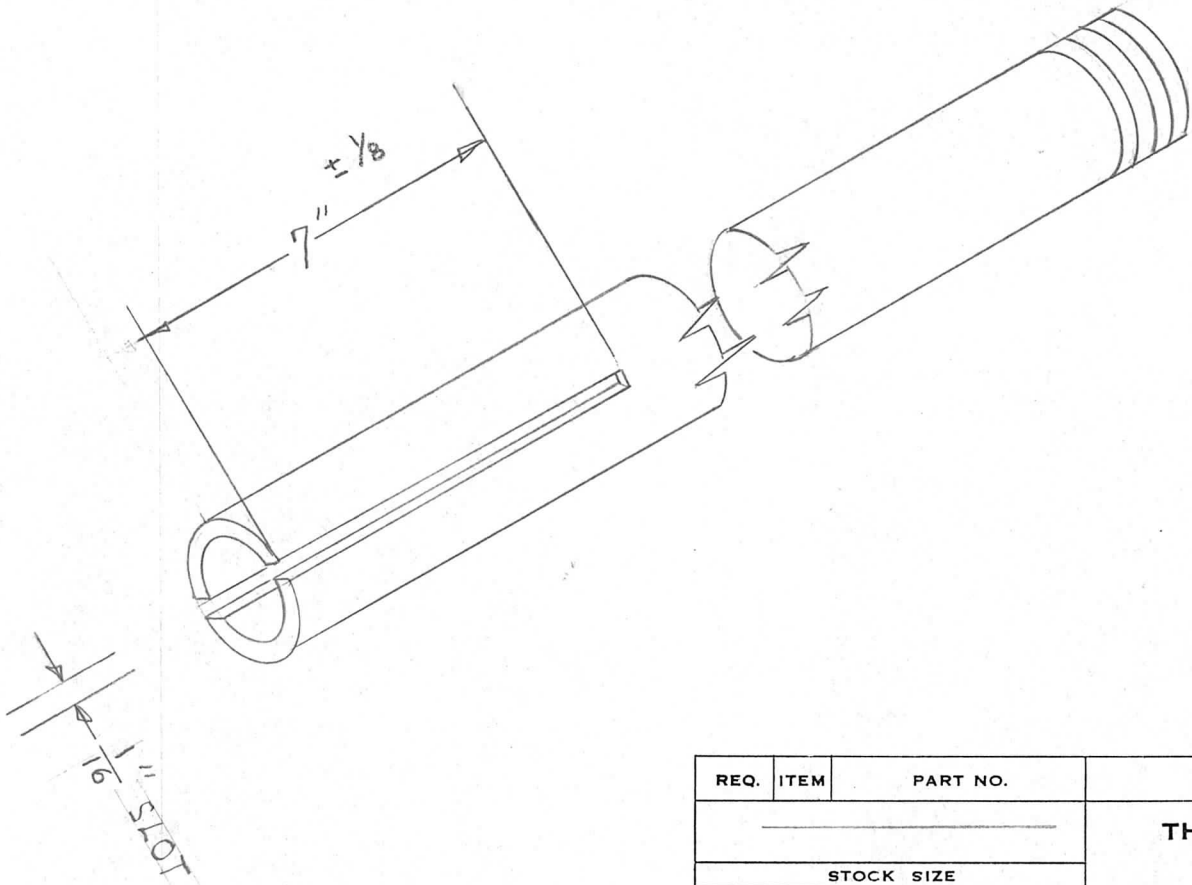
IF IT IS FOUND DESIRABLE TO CHANGE ANY TOLERANCE OR OTHER DETAIL SPECIFIED ON THIS DRAWING NOTIFY THE PURCHASER PROMPTLY.

PM-339

A

MAXIMUM ALLOWABLE TOLERANCES HAVE BEEN DETERMINED AND DEVIATIONS WILL BE CAUSE FOR REJECTION. REMOVE ALL BURRS AND SHARP EDGES

REQ. PER UNIT	USED ON			
	MODEL	PROJECT NO.	ASS'Y. NO.	DATE
1	VRA 1,2	259		MAR 15, 55



REQ.	ITEM	PART NO.	DESCRIPTION	SYMBOL
			THE TECHNICAL MATERIEL CORP.	
			MAMARONECK. NEW YORK	
			MODIFICATION OF ANTENNA	
			WHIP AW 100-3	
			7 B	2 B
			WMEC	AMP
			CHECKED	FINAL APPROVAL
				PM-339
				A

ISSUE	ITEM	CHANGED FROM	DATE	CN. NO.	DRAFTS	CHECKER	ENG. APP.
A	1	PICTORIAL CLARIFIED	6/8/54	1	PB	JDe	WDC

TOLERANCES	SCALE
ALL OTHERS DEC. DIM. ± FRAC. DIM. ± ANGULAR DIM. ±	DRILL, PUNCH, COMMERCIAL STOCK SIZES AND MANUFACTURERS TOLERANCES ARE NOT INCLUDED.

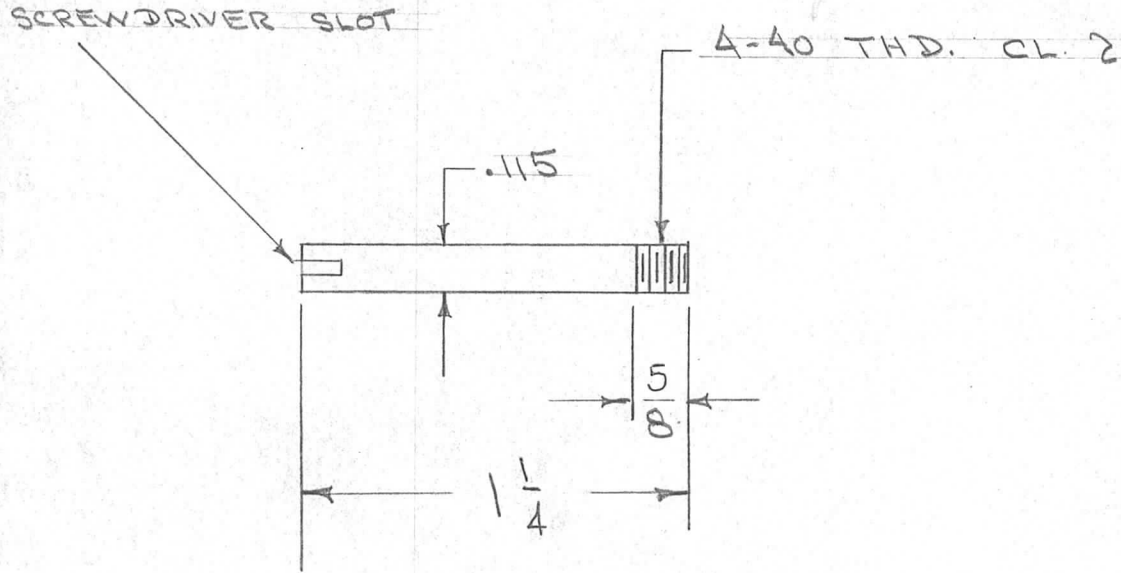


IF IT IS FOUND DESIRABLE TO CHANGE ANY TOLERANCE OR OTHER DETAIL SPECIFIED ON THIS DRAWING NOTIFY THE PURCHASER PROMPTLY.

PM-341 C

MAXIMUM ALLOWABLE TOLERANCES HAVE BEEN DETERMINED AND DEVIATIONS WILL BE CAUSE FOR REJECTION. REMOVE ALL BURRS AND SHARP EDGES

REQ. PER UNIT	USED ON			
	MODEL	PROJECT NO.	ASS'Y. NO.	DATE
2	GPR	297		2-16-55



ISSUE	ITEM	CHANGED FROM	DATE	CN. NO.	DRAFTS	CHECKER	ENG. APP.
C	1 1/2	5/8 WAS 1/2	7/25/58	411	aka		
B	1	FINISH ADDED	9/12/55	2	jak	CDD	WR
A	1	1 1/4 WAS 1"	7/19/55	1	CDD	jak	WR

REQ.	ITEM	PART NO.	DESCRIPTION	SYMBOL
	# 32 (.115)		THE TECHNICAL MATERIEL CORP.	
	STEEL	— II —	MAMARONECK. NEW YORK	
	DRILL ROD		PIN, DIAL LOCK	
			G.P.R.	
			CDD. 3-16-55	WR
			DRAWN	ELEC. DES. APP. MECH. DES. APP.
			CHECKED	G.T.O.
			HEAT TREAT. SPEC.	FINAL APPROVAL
			FINISH & SPEC. NO.	PM-341 C

TOLERANCES		SCALE
ALL OTHERS	DEC. DIM. ± FRAC. DIM. ± 1/64 ANGULAR DIM. ±	DRILL, PUNCH, COMMERCIAL STOCK SIZES AND MANUFACTURERS TOLERANCES ARE NOT INCLUDED.

IF IT IS FOUND DESIRABLE TO CHANGE ANY TOLERANCE OR OTHER DETAIL SPECIFIED ON THIS DRAWING NOTIFY THE PURCHASER PROMPTLY.

PM-344

MAXIMUM ALLOWABLE TOLERANCES HAVE BEEN DETERMINED AND DEVIATIONS WILL BE CAUSE FOR REJECTION. REMOVE ALL BURRS AND SHARP EDGES

REQ. PER UNIT

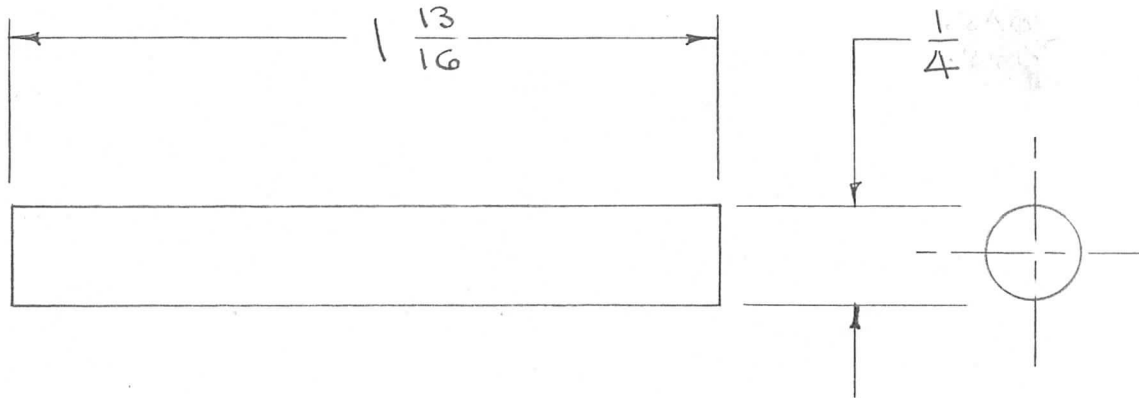
USED ON

MODEL

PROJECT NO.

ASS'Y. NO.

DATE



REQ.	ITEM	PART NO.	DESCRIPTION	SYMBOL
		1/4 D. ROD.	THE TECHNICAL MATERIEL CORP.	
		STOCK SIZE	MAMARONECK, NEW YORK	
		ALUMINUM	SHAFT, CALIBRATE CONTROL	
		MATERIAL	WEIGHT PER PC.	
		11S T3		
		TYPE & TEMPER	COO 4-14-55	WOC
			DRAWN	ELEC. DES. APP.
			MECH. DES. APP.	
			CHECKED	FINAL APPROVAL
		HEAT TREAT. SPEC.		
		YELLOW IRIDITE		
		FINISH & SPEC. NO.		

ISSUE	ITEM	CHANGED FROM	DATE	CN. NO.	DRAFTS	CHECKER	ENG. APP.
TOLERANCES				SCALE			
ALL OTHERS	DEC. DIM. ±	FRAC. DIM. ± 1/64	ANGULAR DIM. ±	DRILL, PUNCH, COMMERCIAL STOCK SIZES AND MANUFACTURERS TOLERANCES ARE NOT INCLUDED.			

PM-344

IF IT IS FOUND DESIRABLE TO CHANGE ANY TOLERANCE OR OTHER DETAIL SPECIFIED ON THIS DRAWING NOTIFY THE PURCHASER PROMPTLY.

PM-345 B

MAXIMUM ALLOWABLE TOLERANCES HAVE BEEN DETERMINED AND DEVIATIONS WILL BE CAUSE FOR REJECTION. REMOVE ALL BURRS AND SHARP EDGES

REQ. PER UNIT

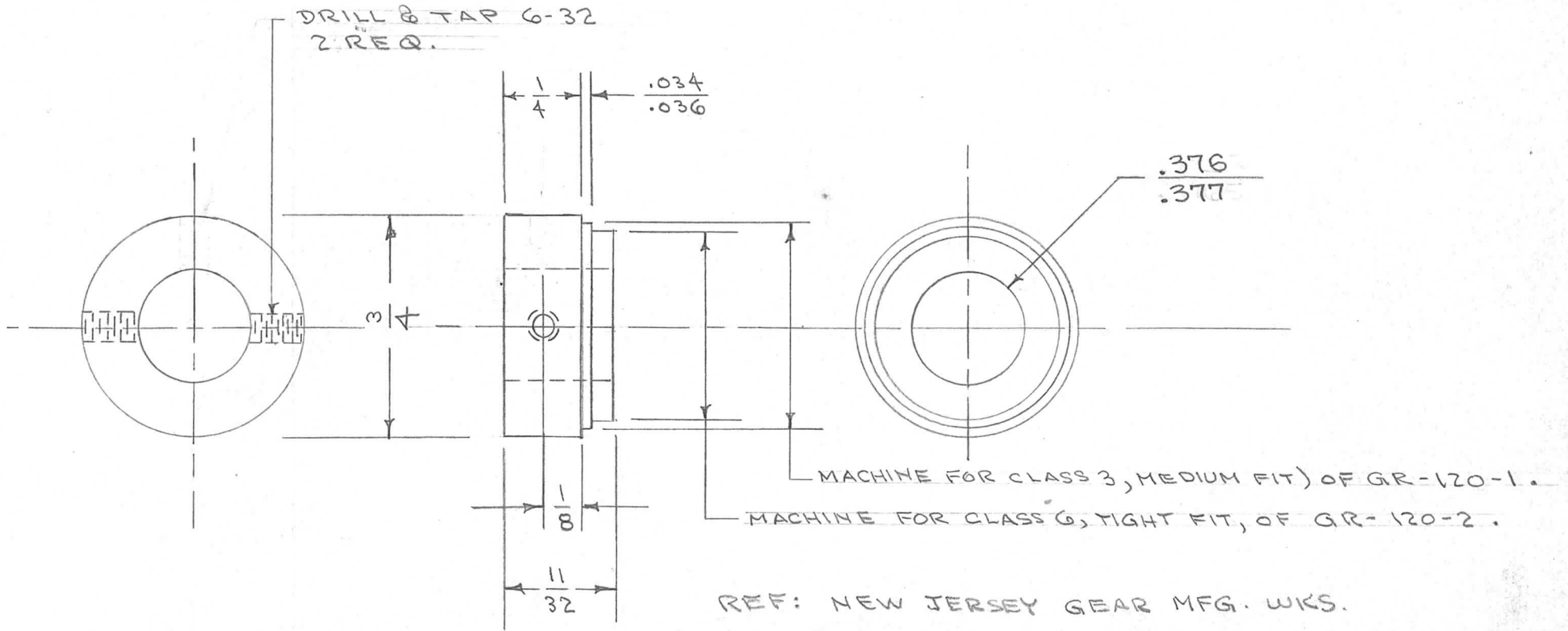
USED ON

MODEL

PROJECT NO.

ASS'Y. NO.

DATE



REQ.	ITEM	PART NO.	DESCRIPTION	SYMBOL
		3/4 DIA.	THE TECHNICAL MATERIEL CORP. MAMARONECK, NEW YORK	
		STOCK SIZE		
		ALUMINUM	HUB, GEAR	
		MATERIAL	WEIGHT PER PC.	
		11 S T 3	CDD. 4-25-55	
		TYPE & TEMPER	###	WZ
		II	DRAWN	ELEC. DES. APP.
		HEAT TREAT. SPEC.	FADE	G.T.O
		YELLOW ANODIZE	CHECKED	FINAL APPROVAL
		FINISH & SPEC. NO.		PM-345 B

ISSUE	ITEM	CHANGED FROM	DATE	CN. NO.	DRAFTS	CHECKER	ENG. APP.
B	1	ID. WAS $\frac{.3755}{.3765}$	12/1/57	2	16	FADE	Alm
A	1	TAPPED HOLES WERE AT 90°	7/19/55	1	EDD	FADE	WZ

TOLERANCES	SCALE
DEC. DIM. $\pm .005$ FRAC. DIM. $\pm \frac{1}{64}$ ANGULAR DIM. $\pm$	II

DRILL, PUNCH, COMMERCIAL STOCK SIZES AND MANUFACTURERS TOLERANCES ARE NOT INCLUDED.

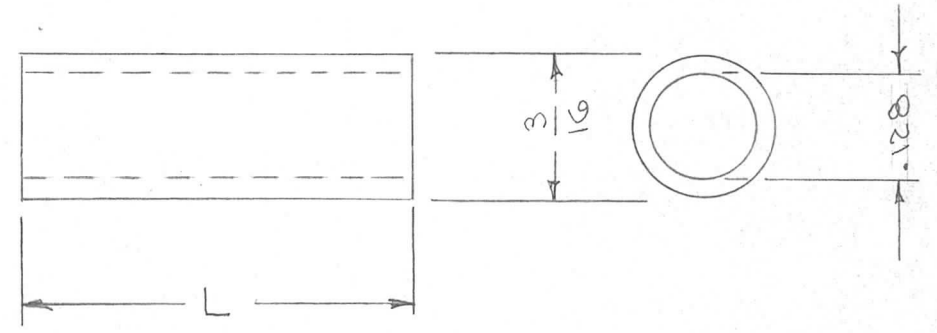
IF IT IS FOUND DESIRABLE TO CHANGE ANY TOLERANCE OR OTHER DETAIL SPECIFIED ON THIS DRAWING NOTIFY THE PURCHASER PROMPTLY.

PM-346

MAXIMUM ALLOWABLE TOLERANCES HAVE BEEN DETERMINED AND DEVIATIONS WILL BE CAUSE FOR REJECTION. REMOVE ALL BURRS AND SHARP EDGES

REQ. PER UNIT	USED ON			
	MODEL	PROJECT NO.	ASS'Y. NO.	DATE
SEE CHART	GPR.			6-8-55

TMC. NO.	L	O.D.	I.D.	REQ. PER UNIT
PM-346 -1	1/4	3/16	.128	2
" -2	5/16	3/16	.128	4
" -3	3/8	3/16	.128	2
" -4	1/2	3/16	.128	2
" -5	5/8	3/16	.128	4



REQ.	ITEM	PART NO.	DESCRIPTION	SYMBOL
	SEAMLESS TUBING		THE TECHNICAL MATERIEL CORP. MAMARONECK. NEW YORK	
	STOCK SIZE			
	STEEL	—H—	SPACER, BAND SWITCH	
	MATERIAL	WEIGHT PER PC.		
			ODD 6-8-55	
			DRAWN	ELEC. DES. APP. MECH. DES. APP.
			HEAT TREAT. SPEC.	
		S-105 CADMIUM PLATE .0002	CHECKED	FINAL APPROVAL
		FINISH & SPEC. NO.		PM-346

ISSUE	ITEM	CHANGED FROM	DATE	CN. NO.	DRAFTS	CHECKER	ENG. APP.

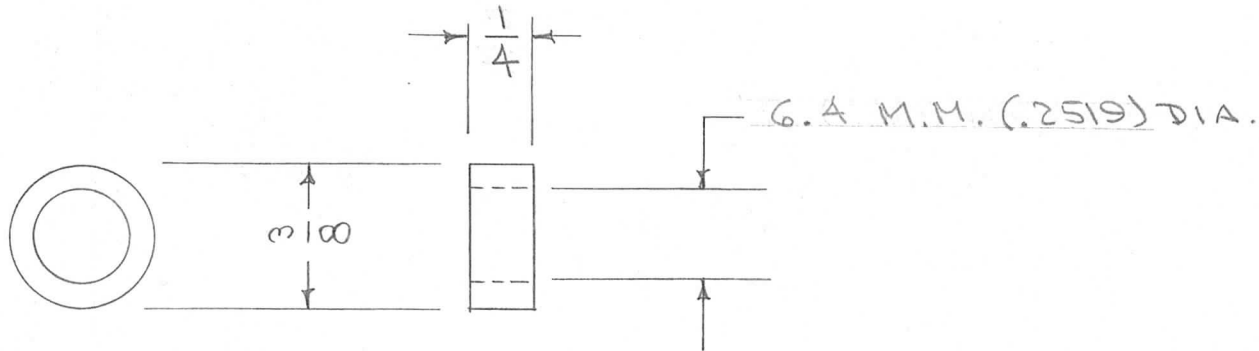
TOLERANCES	SCALE
ALL OTHERS DEC. DIM. ± FRAC. DIM. ± ANGULAR DIM. ±	DRILL, PUNCH, COMMERCIAL STOCK SIZES AND MANUFACTURERS TOLERANCES ARE NOT INCLUDED.

IF IT IS FOUND DESIRABLE TO CHANGE ANY TOLERANCE OR OTHER DETAIL SPECIFIED ON THIS DRAWING NOTIFY THE PURCHASER PROMPTLY.

PM-349 B

MAXIMUM ALLOWABLE TOLERANCES HAVE BEEN DETERMINED AND DEVIATIONS WILL BE CAUSE FOR REJECTION. REMOVE ALL BURRS AND SHARP EDGES

REQ. PER UNIT	USED ON			
	MODEL	PROJECT NO.	ASS'Y. NO.	DATE
1	G.P.R.			6-13-55



REQ.	ITEM	PART NO.	DESCRIPTION			SYMBOL
			THE TECHNICAL MATERIEL CORP.			
			MAMARONECK. NEW YORK			
B			STOCK SIZE DELETED			
A	2		QUAN. WAS 2			
	1		1/4 WAS 5/32			
			BRASS	#		
			MATERIAL	WEIGHT PER PC.		
			FREE TURNING.			
			TYPE & TEMPER			
			HEAT TREAT. SPEC.			
			FINISH & SPEC. NO.			
ISSUE			CHANGED FROM	DATE	CN. NO.	DRAFTS CHECKER
TOLERANCES			SCALE			
ALL OTHERS			DRILL, PUNCH, COMMERCIAL STOCK SIZES AND MANUFACTURERS TOLERANCES ARE NOT INCLUDED.			
DEC. DIM. ± .0015						
FRAC. DIM. ± 1/64						
ANGULAR DIM. ±						
			DRAWN		ELEC. DES. APP.	MECH. DES. APP.
			CHECKED		FINAL APPROVAL	
					PM-349 B	

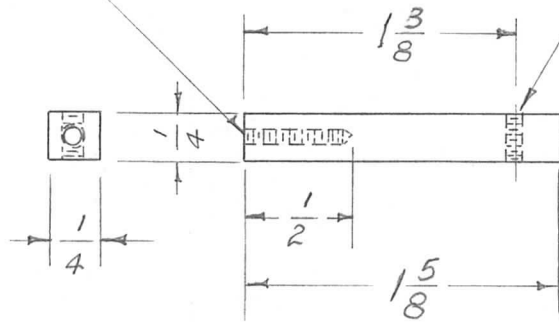
IF IT IS FOUND DESIRABLE TO CHANGE ANY TOLERANCE OR OTHER DETAIL SPECIFIED ON THIS DRAWING NOTIFY THE PURCHASER PROMPTLY.

PM-350

MAXIMUM ALLOWABLE TOLERANCES HAVE BEEN DETERMINED AND DEVIATIONS WILL BE CAUSE FOR REJECTION. REMOVE ALL BURRS AND SHARP EDGES

REQ. PER UNIT	USED ON			
	MODEL	PROJECT NO.	ASS'Y. NO.	DATE
6	FSS			6-15-55

DRILL & TAP  
6-32



DRILL & TAP  
6-32

REQ.	ITEM	PART NO.	DESCRIPTION	SYMBOL
		$1\frac{5}{8} \times \frac{1}{4} \times \frac{1}{4}$	THE TECHNICAL MATERIEL CORP.	
		STOCK SIZE	MAMARONECK, NEW YORK	
	ALUMINUM	—#—	TERMINAL BOARD SUPPORT	
	MATERIAL	WEIGHT PER PC.		
		63S-75		
		TYPE & TEMPER	P.B. 6-15-55 2B	WAY
		HEAT TREAT. SPEC.	DRAWN	ELEC. DES. APP.
			7-18-55	K2 A.J.J.
		S-101 CAUSTIC DIP	CHECKED	FINAL APPROVAL
		FINISH & SPEC. NO.		PM-350

ISSUE	ITEM	CHANGED FROM	DATE	CN. NO.	DRAFTS	CHECKER	ENG. APP.
		TOLERANCES					
		SCALE					
ALL OTHERS		DEC. DIM. $\pm$ FRAC. DIM. $\pm$ Y6A ANGULAR DIM. $\pm$					DRILL, PUNCH, COMMERCIAL STOCK SIZES AND MANUFACTURERS TOLERANCES ARE NOT INCLUDED.

IF IT IS FOUND DESIRABLE TO CHANGE ANY TOLERANCE OR OTHER DETAIL SPECIFIED ON THIS DRAWING NOTIFY THE PURCHASER PROMPTLY.

PM-351

MAXIMUM ALLOWABLE TOLERANCES HAVE BEEN DETERMINED AND DEVIATIONS WILL BE CAUSE FOR REJECTION. REMOVE ALL BURRS AND SHARP EDGES

REQ. PER UNIT

USED ON

MODEL

PROJECT NO.

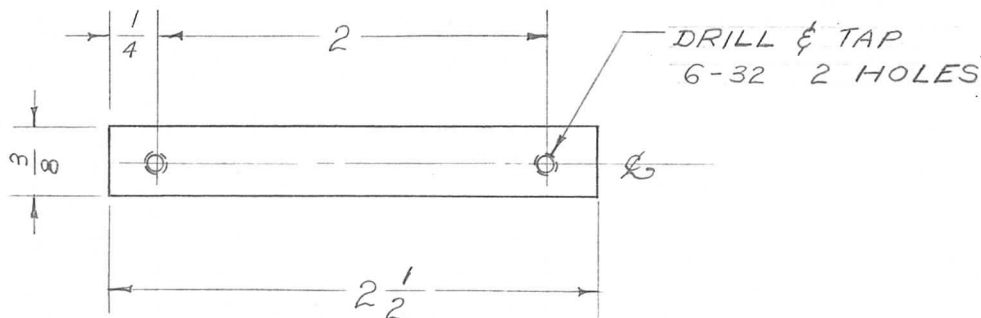
ASS'Y. NO.

DATE

2

FSS

6-15-55



REQ.	ITEM	PART NO.	DESCRIPTION	SYMBOL
		$\frac{1}{8} \times \frac{3}{8} \times 2\frac{1}{2}$	THE TECHNICAL MATERIEL CORP.	
		STOCK SIZE	MAMARONECK. NEW YORK	
		ALUMINUM	OVEN FASTENER PLATE	
		MATERIAL		
		WEIGHT PER PC.		
		245T3		
		TYPE & TEMPER	P.B. 6-15-55	2B
			DRAWN	ELEC. DES. APP.
			7-18-55	MECH. DES. APP.
		HEAT TREAT. SPEC.	WZ	A. J. J.
			CHECKED	FINAL APPROVAL
		S-101 CAUSTIC DIP		
		FINISH & SPEC. NO.		

ISSUE	ITEM	CHANGED FROM	DATE	CN. NO.	DRAFTS	CHECKER	ENG. APP.
TOLERANCES			SCALE				
ALL OTHERS	DEC. DIM. $\pm$ FRAC. DIM. $\pm$ $\frac{1}{64}$ ANGULAR DIM. $\pm$		DRILL, PUNCH, COMMERCIAL STOCK SIZES AND MANUFACTURERS TOLERANCES ARE NOT INCLUDED.				

PM-351

IF IT IS FOUND DESIRABLE TO CHANGE ANY TOLERANCE OR OTHER DETAIL SPECIFIED ON THIS DRAWING NOTIFY THE PURCHASER PROMPTLY.

PM-352 C

MAXIMUM ALLOWABLE TOLERANCES HAVE BEEN DETERMINED AND DEVIATIONS WILL BE CAUSE FOR REJECTION. REMOVE ALL BURRS AND SHARP EDGES

REQ. PER UNIT

USED ON

MODEL

PROJECT NO.

ASS'Y. NO.

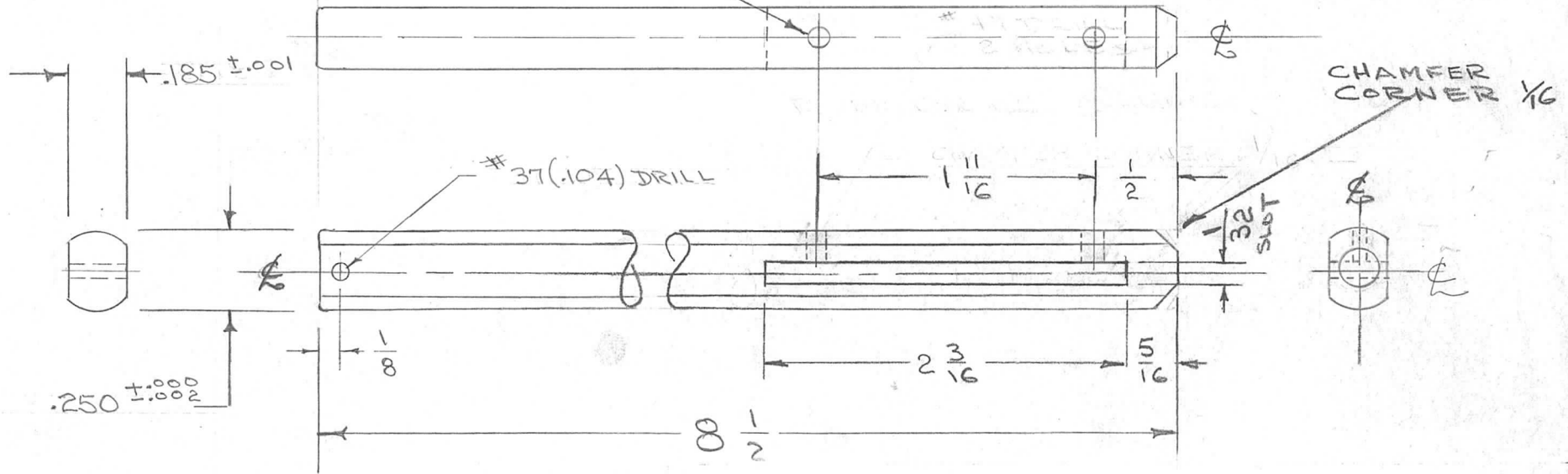
DATE

1

GPR

6-15-55

#47 DRILL - 2 HOLES



REQ.	ITEM	PART NO.	DESCRIPTION			SYMBOL
			<b>THE TECHNICAL MATERIEL CORP.</b>			
STOCK SIZE			MAMARONECK, NEW YORK			
ALUMINUM			SHAFT, SWITCH			
MATERIAL			G.P.R.			
WEIGHT PER PC.			ODD. 6-15-55 P.L.K.			
TYPE & TEMPER			DRAWN			
HEAT TREAT. SPEC.			ELEC. DES. APP.			
FINISH & SPEC. NO.			MECH. DES. APP.			
			G.T.O			
			CHECKED			
			FINAL APPROVAL			
			SUPERCEDES			
			1-539			
			PM-352			
			C			

ISSUE	ITEM	CHANGED FROM	DATE	CN. NO.	DRAFTS	CHECKER	ENG. APP.
C	1	Pictorial Clarified	12/16/57	3	JAR	WB	WJ
B	1	SLOT Added	4/5/57	2	JAR	JAR	WJ
A	2	HOLE ADDED	10-18-55	1	B3	JAR	WJ
	1	CHAMFER 1/16 ADDED					

TOLERANCES		SCALE
ALL OTHERS	DEC. DIM. ± FRAC. DIM. ± 1/64 ANGULAR DIM. ±	DRILL, PUNCH, COMMERCIAL STOCK SIZES AND MANUFACTURERS TOLERANCES ARE NOT INCLUDED.

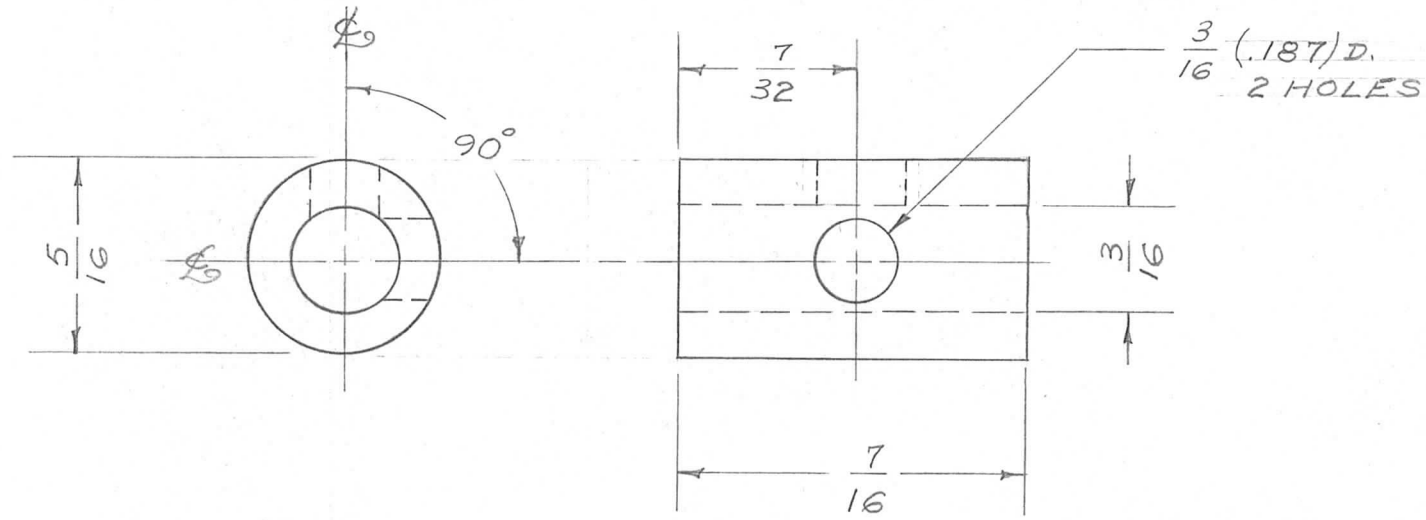


IF IT IS FOUND DESIRABLE TO CHANGE ANY TOLERANCE OR OTHER DETAIL SPECIFIED ON THIS DRAWING NOTIFY THE PURCHASER PROMPTLY.

PM-353

MAXIMUM ALLOWABLE TOLERANCES HAVE BEEN DETERMINED AND DEVIATIONS WILL BE CAUSE FOR REJECTION. REMOVE ALL BURRS AND SHARP EDGES

REQ. PER UNIT	USED ON			
	MODEL	PROJECT NO.	ASS'Y. NO.	DATE
1	FSS			8-2-55



REQ.	ITEM	PART NO.	DESCRIPTION	SYMBOL
	5 D 16	ROD	THE TECHNICAL MATERIEL CORP. MAMARONECK. NEW YORK	
	STOCK SIZE			
	BRASS	#	BUSHING, KNOB	
	MATERIAL	WEIGHT PER PC.	FSS	
	FREE TURNING			
	TYPE & TEMPER		AB 8-2-55	
			DRAWN	ELEC. DES. APP. MECH. DES. APP.
			8-2-55	KZ
	HEAT TREAT. SPEC.		CHECKED	FINAL APPROVAL
				PM-353
	FINISH & SPEC. NO.			

ISSUE	ITEM	CHANGED FROM	DATE	CN. NO.	DRAFTS	CHECKER	ENG. APP.
ALL OTHERS		DEC. DIM. $\pm$ FRAC. DIM. $\pm$ $\frac{1}{64}$ ANGULAR DIM. $\pm$					

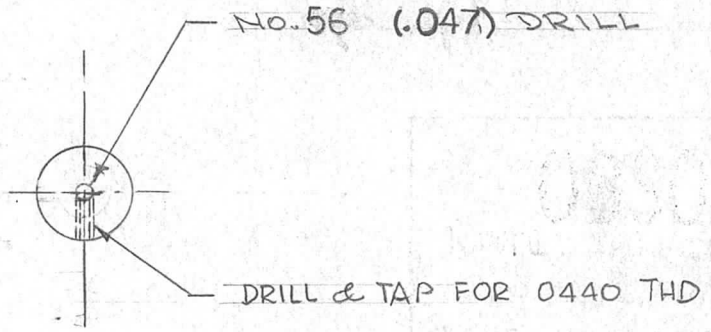
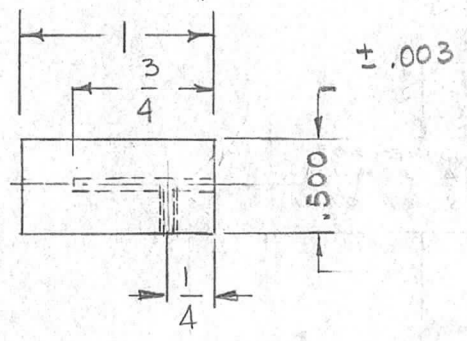
SCALE  
DRILL, PUNCH, COMMERCIAL STOCK SIZES AND MANUFACTURERS TOLERANCES ARE NOT INCLUDED.

IF IT IS FOUND DESIRABLE TO CHANGE ANY TOLERANCE OR OTHER DETAIL SPECIFIED ON THIS DRAWING NOTIFY THE PURCHASER PROMPTLY.

PM-354 E

MAXIMUM ALLOWABLE TOLERANCES HAVE BEEN DETERMINED AND DEVIATIONS WILL BE CAUSE FOR REJECTION. REMOVE ALL BURRS AND SHARP EDGES

REQ. PER UNIT	USED ON			
	MODEL	PROJECT NO.	ASS'Y. NO.	DATE
2	RR-115		A-1670	8-8-55



OBSOLETE

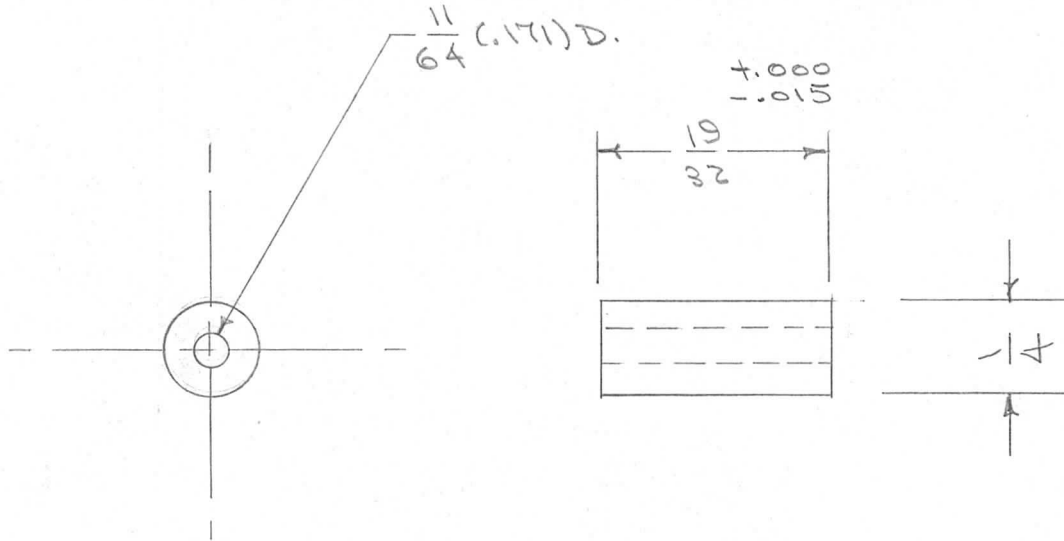
ISSUE	ITEM	CHANGED FROM	DATE	CN. NO.	DRAFTS	CHECKER	ENG. APP.	REQ.	ITEM	PART NO.	DESCRIPTION	SYMBOL	
E		LENGTH OF NO 56 DRILL CHANGE	1-2-89		GDL					1/2 DIA	THE TECHNICAL MATERIEL CORP. MAMARONECK. NEW YORK	CONTACT RESISTOR	
D		DRILL & TAP FOR 0440 ADD	8/15/56							STOCK SIZE			
C	1	"OBSOLETE" NOTE DELETED	11.19.64	12964	WPS					STAINLESS STEEL		RTB	
B	1	OBSOLETE NOTE ADDED	3-20-63	8594						MATERIAL	WEIGHT PER PC.		
A	2	NO. 48 WAS NO. 50	10-3-55	1	PB					303			
A	1	PRESS FIT WAS SNUG FIT								TYPE & TEMPER			
TOLERANCES								SCALE					
DEC. DIM. ±								DRILL, PUNCH, COMMERCIAL STOCK					
FRAC. DIM. ± 1/64								SIZES AND MANUFACTURERS					
ANGULAR DIM. ±								TOLERANCES ARE NOT INCLUDED.					
ALL OTHERS								FINISH & SPEC. NO.					
								DRAWN		ELEC. DES. APP.		MECH. DES. APP.	
								CHECKED		FINAL APPROVAL			
										PM-354		E	

IF IT IS FOUND DESIRABLE TO CHANGE ANY TOLERANCE OR OTHER DETAIL SPECIFIED ON THIS DRAWING NOTIFY THE PURCHASER PROMPTLY.

PM-355 B

MAXIMUM ALLOWABLE TOLERANCES HAVE BEEN DETERMINED AND DEVIATIONS WILL BE CAUSE FOR REJECTION. REMOVE ALL BURRS AND SHARP EDGES

REQ. PER UNIT	USED ON			
	MODEL	PROJECT NO.	ASS'Y. NO.	DATE
2	GPR			8-15-55



REQ.	ITEM	PART NO.	DESCRIPTION	SYMBOL
		1/4 O.D. .035 WALL THICKNESS	THE TECHNICAL MATERIEL CORP. MAMARONECK, NEW YORK	
		STOCK SIZE		
		ALUMINUM TUBING	SPACER, REAR	
		MATERIAL	BANDSPREAD COND.	GPR
		WEIGHT PER PC.		
		FR 2024-T3		
		TYPE & TEMPER		
			DRAWN	ELEC. DES. APP.
			CHECKED	FINAL APPROVAL
		HEAT TREAT. SPEC.		
		5101 CAUSTIC DIP		
		FINISH & SPEC. NO.		

ISSUE	ITEM	CHANGED FROM	DATE	CN. NO.	DRAFTS	CHECKER	ENG. APP.
B	1	PER UNIT WAS 1 REQ	2-1-56	2	13	JAO	WRC
A	1	MATERIAL WAS BRASS	12-1-55	1	13	JAO	WRC

TOLERANCES		SCALE
ALL OTHERS	DEC. DIM. ± FRAC. DIM. ± 1/64 ANGULAR DIM. ±	DRILL, PUNCH, COMMERCIAL STOCK SIZES AND MANUFACTURERS TOLERANCES ARE NOT INCLUDED.

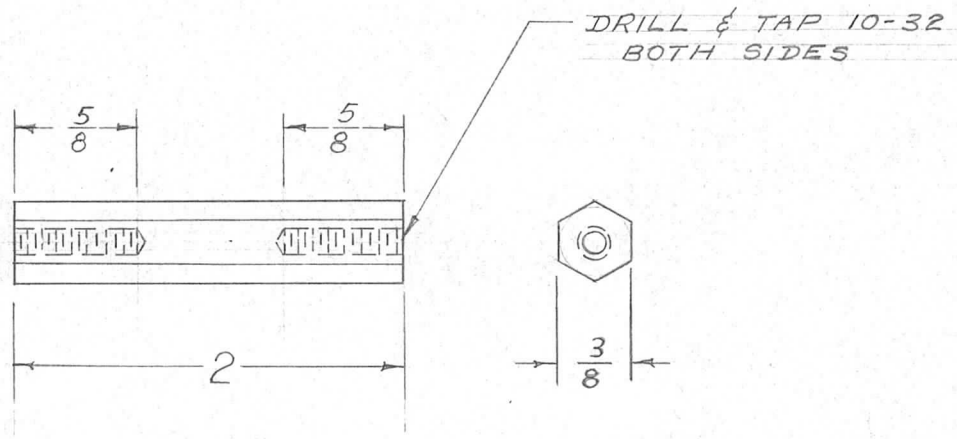
PM-355 B

IF IT IS FOUND DESIRABLE TO CHANGE ANY TOLERANCE OR OTHER DETAIL SPECIFIED ON THIS DRAWING NOTIFY THE PURCHASER PROMPTLY.

PM-356

MAXIMUM ALLOWABLE TOLERANCES HAVE BEEN DETERMINED AND DEVIATIONS WILL BE CAUSE FOR REJECTION. REMOVE ALL BURRS AND SHARP EDGES

REQ. PER UNIT	USED ON			
	MODEL	PROJECT NO.	ASS'Y. NO.	DATE
6	RTP			8-16-55
1	VOX			5-19-58
6	RTP-2			10-21-58



REQ.	ITEM	PART NO.	DESCRIPTION	SYMBOL
			THE TECHNICAL MATERIEL CORP.	
			MAMARONECK. NEW YORK	
			SOCKET MOUNTING	
			GPT-750 PLATE SPACERS	
			1B 8-16-55	
			10/27/55	
			MECH. DES. APP.	
			CHECKED	
			FINAL APPROVAL	
			PM-356	

ISSUE	ITEM	CHANGED FROM	DATE	CN. NO.	DRAFTS	CHECKER	ENG. APP.
ALL OTHERS		DEC. DIM. ± FRAC. DIM. ± 1/64 ANGULAR DIM. ±					

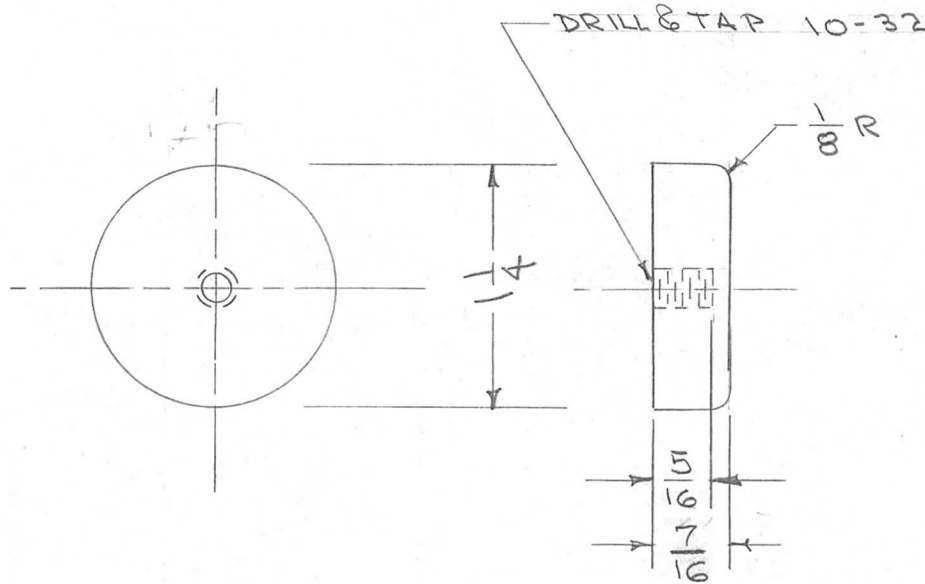
SCALE  
DRILL, PUNCH, COMMERCIAL STOCK SIZES AND MANUFACTURERS TOLERANCES ARE NOT INCLUDED.

IF IT IS FOUND DESIRABLE TO CHANGE ANY TOLERANCE OR OTHER DETAIL SPECIFIED ON THIS DRAWING NOTIFY THE PURCHASER PROMPTLY.

PM-358

MAXIMUM ALLOWABLE TOLERANCES HAVE BEEN DETERMINED AND DEVIATIONS WILL BE CAUSE FOR REJECTION. REMOVE ALL BURRS AND SHARP EDGES

REQ. PER UNIT	USED ON			
	MODEL	PROJECT NO.	ASS'Y. NO.	DATE
2	RTF		A-1094	9-23-55
2	RTF-2	P/A		11/20/58



PM-358

REQ.	ITEM	PART NO.	DESCRIPTION	SYMBOL
		1/4 DIA.	THE TECHNICAL MATERIEL CORP.	
		STOCK SIZE	MAMARONECK. NEW YORK	
		BRASS	CONTACT, R.F. FINAL	
		MATERIAL	POWER AMPL.	GPT-750
		WEIGHT PER PC.		
		FREE TURNING	CDD 9/23/55	OMY 1/5/56
		TYPE & TEMPER	DRAWN	ELEC. DES. APP.
			MECH. DES. APP.	
		HEAT TREAT. SPEC.	CHECKED	FINAL APPROVAL
		FINISH & SPEC. NO.		PM-358

ISSUE	ITEM	CHANGED FROM	DATE	CN. NO.	DRAFTS	CHECKER	ENG. APP.
TOLERANCES		SCALE					
ALL OTHERS	DEC. DIM. ±	DRILL, PUNCH, COMMERCIAL STOCK SIZES AND MANUFACTURERS TOLERANCES ARE NOT INCLUDED.					
	FRAC. DIM. ± 1/64						
	ANGULAR DIM. ±						

IF IT IS FOUND DESIRABLE TO CHANGE ANY TOLERANCE OR OTHER DETAIL SPECIFIED ON THIS DRAWING NOTIFY THE PURCHASER PROMPTLY.

PM-359 A

MAXIMUM ALLOWABLE TOLERANCES HAVE BEEN DETERMINED AND DEVIATIONS WILL BE CAUSE FOR REJECTION. REMOVE ALL BURRS AND SHARP EDGES

REQ. PER UNIT

USED ON

MODEL

PROJECT NO.

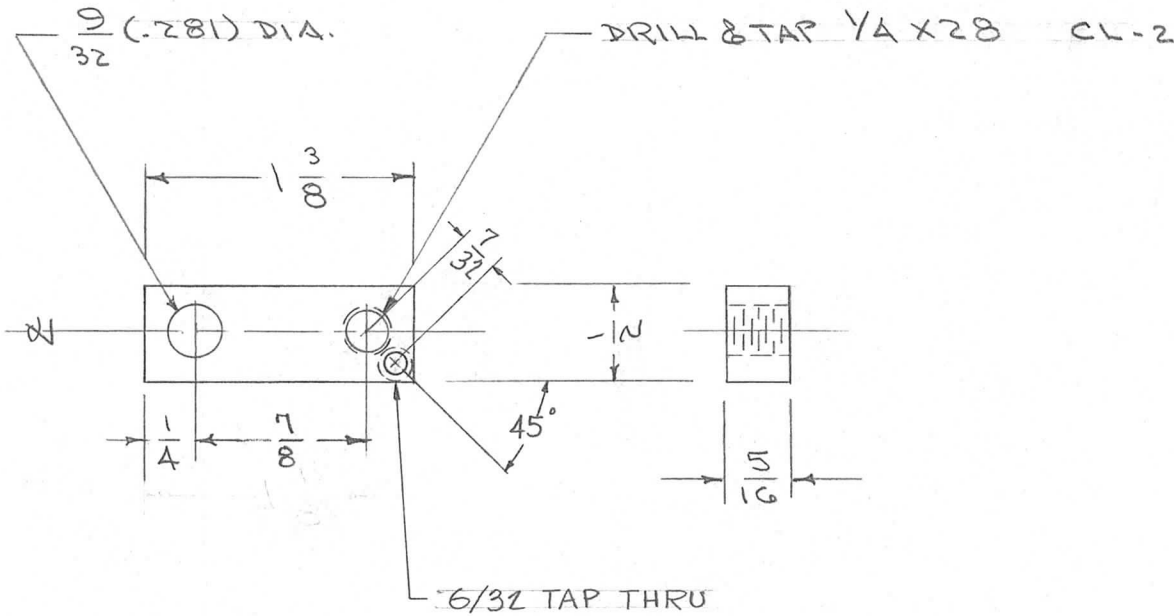
ASS'Y. NO.

DATE

1

RTF

9-26-55



REQ.	ITEM	PART NO.	DESCRIPTION	SYMBOL
		5/16 X 1/2 BAR.	THE TECHNICAL MATERIEL CORP.	
		STOCK SIZE	MAMARONECK. NEW YORK	
		ALUMINUM	SLIDE, STOP	
		MATERIAL	POW/AMP	
		WEIGHT PER PC.	2024-T4	
		TYPE & TEMPER	CD. 9-26-55	
			DRAWN	ELEC. DES. APP.
			HEAT TREAT. SPEC.	MECH. DES. APP.
		S-101 CAUSTIC DIP	CHECKED	FINAL APPROVAL
		FINISH & SPEC. NO.		

A	1	6/32 TAP ADDED	11-3-58		J.C.B.	JAS	
ISSUE	ITEM	CHANGED FROM	DATE	CN. NO.	DRAFTS	CHECKER	ENG. APP.

TOLERANCES			SCALE				
ALL OTHERS	DEC. DIM. ±	FRAC. DIM. ± 1/64	DRILL, PUNCH, COMMERCIAL STOCK SIZES AND MANUFACTURERS TOLERANCES ARE NOT INCLUDED.				

PM-359 A

IF IT IS FOUND DESIRABLE TO CHANGE ANY TOLERANCE OR OTHER DETAIL SPECIFIED ON THIS DRAWING NOTIFY THE PURCHASER PROMPTLY.

PM-360

MAXIMUM ALLOWABLE TOLERANCES HAVE BEEN DETERMINED AND DEVIATIONS WILL BE CAUSE FOR REJECTION. REMOVE ALL BURRS AND SHARP EDGES

REQ. PER UNIT

USED ON

MODEL

PROJECT NO.

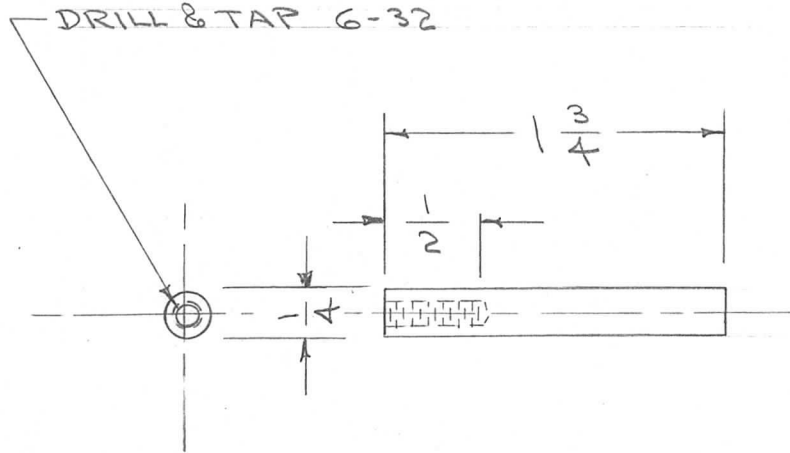
ASS'Y. NO.

DATE

1

RTF

9-26-55



REQ.	ITEM	PART NO.	DESCRIPTION	SYMBOL
	1/4 D. ROD.		THE TECHNICAL MATERIEL CORP.	
	STOCK SIZE		MAMARONECK. NEW YORK	
	ALUMINUM	#	SLIDE, ROD	
	MATERIAL	WEIGHT PER PC.	POW/AMPL.	
	11 S T 3		CDD 9/26/55	
	TYPE & TEMPER		Mb -1/11/56	
	#		DRAWN	ELEC. DES. APP. MECH. DES. APP.
	HEAT TREAT. SPEC.		CHECKED	FINAL APPROVAL
	S-101 CAUSTIC DIP			PM-360
	FINISH & SPEC. NO.			

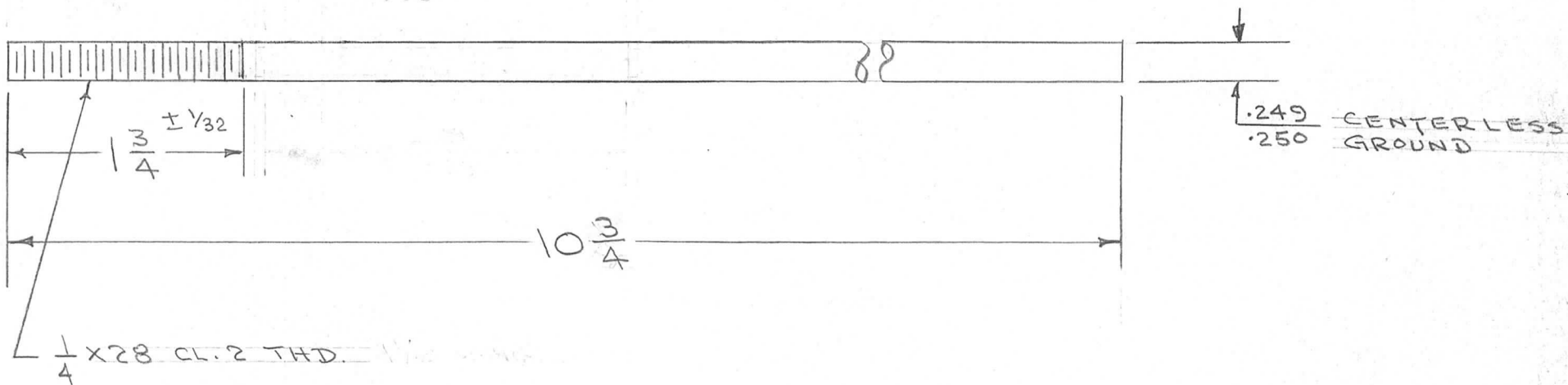
ISSUE	ITEM	CHANGED FROM	DATE	CN. NO.	DRAFTS	CHECKER	ENG. APP.
TOLERANCES			SCALE				
ALL OTHERS	DEC. DIM. ±	FRAC. DIM. ± 1/64	DRILL, PUNCH, COMMERCIAL STOCK SIZES AND MANUFACTURERS TOLERANCES ARE NOT INCLUDED.				
	ANGULAR DIM. ±						

IF IT IS FOUND DESIRABLE TO CHANGE ANY TOLERANCE OR OTHER DETAIL SPECIFIED ON THIS DRAWING NOTIFY THE PURCHASER PROMPTLY.

PM-362 A

MAXIMUM ALLOWABLE TOLERANCES HAVE BEEN DETERMINED AND DEVIATIONS WILL BE CAUSE FOR REJECTION. REMOVE ALL BURRS AND SHARP EDGES

REQ. PER UNIT	USED ON			
	MODEL	PROJECT NO.	ASS'Y. NO.	DATE
1	RTF		A-1276	9-26-55



ISSUE	ITEM	CHANGED FROM	DATE	CN. NO.	DRAFTS	CHECKER	ENG. APP.
A	2	UNDERCUT REMOVED	4/27/56	1	FAIR	AM	WJC
	1	10 3/4 WAS 10 13/32					

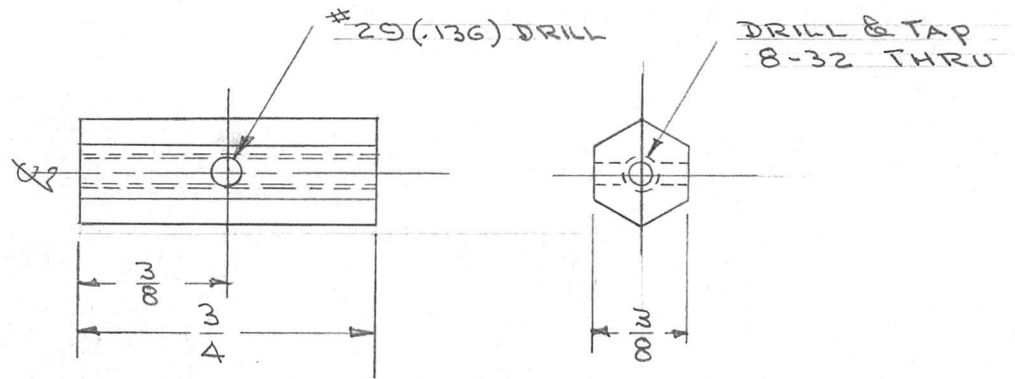
REQ.	ITEM	PART NO.	DESCRIPTION	SYMBOL
	9/32	DIA. ROD.	THE TECHNICAL MATERIEL CORP.	
		STOCK SIZE	MAMARONECK, NEW YORK	
		BRASS	SHAFT, HELICAL GEAR	
		MATERIAL	POW/AMP	
		WEIGHT PER PC.	FREE TURNING	
		TYPE & TEMPER	CON. 9/26/55	AM 1/11/56
		HEAT TREAT. SPEC.	DRAWN	ELEC. DES. APP.
		S-105 CADMIUM PLATED	FAIR	WJC
		.0003	CHECKED	FINAL APPROVAL
		FINISH & SPEC. NO.		PM-362 A

TOLERANCES		SCALE
ALL OTHERS	DEC. DIM. ± FRAC. DIM. ± 1/64 ANGULAR DIM. ±	DRILL, PUNCH, COMMERCIAL STOCK SIZES AND MANUFACTURERS TOLERANCES ARE NOT INCLUDED.



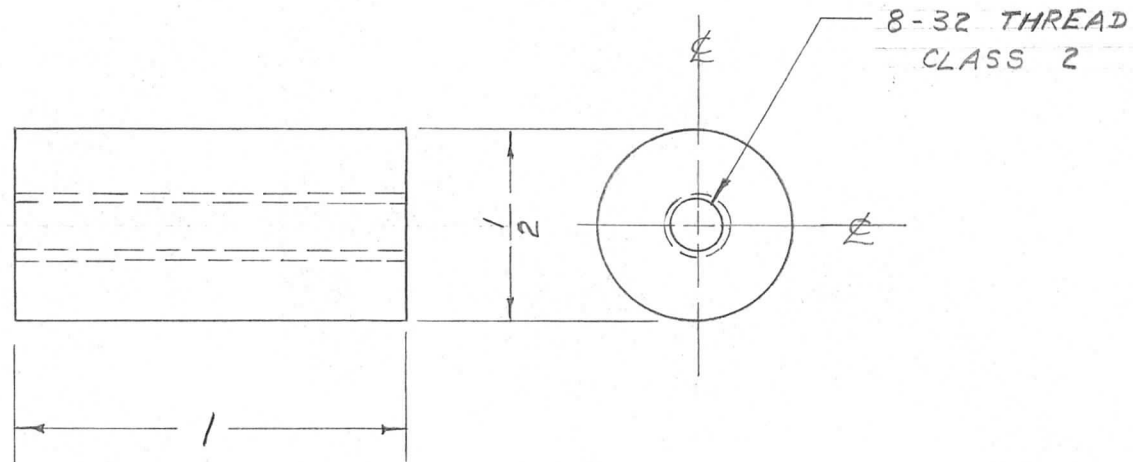
REQ. PER UNIT	USED ON		
	MODEL	ASS'Y. NO.	DATE
2	RTM		11/23/55
2	RTM~2		10~16~58

PM-368



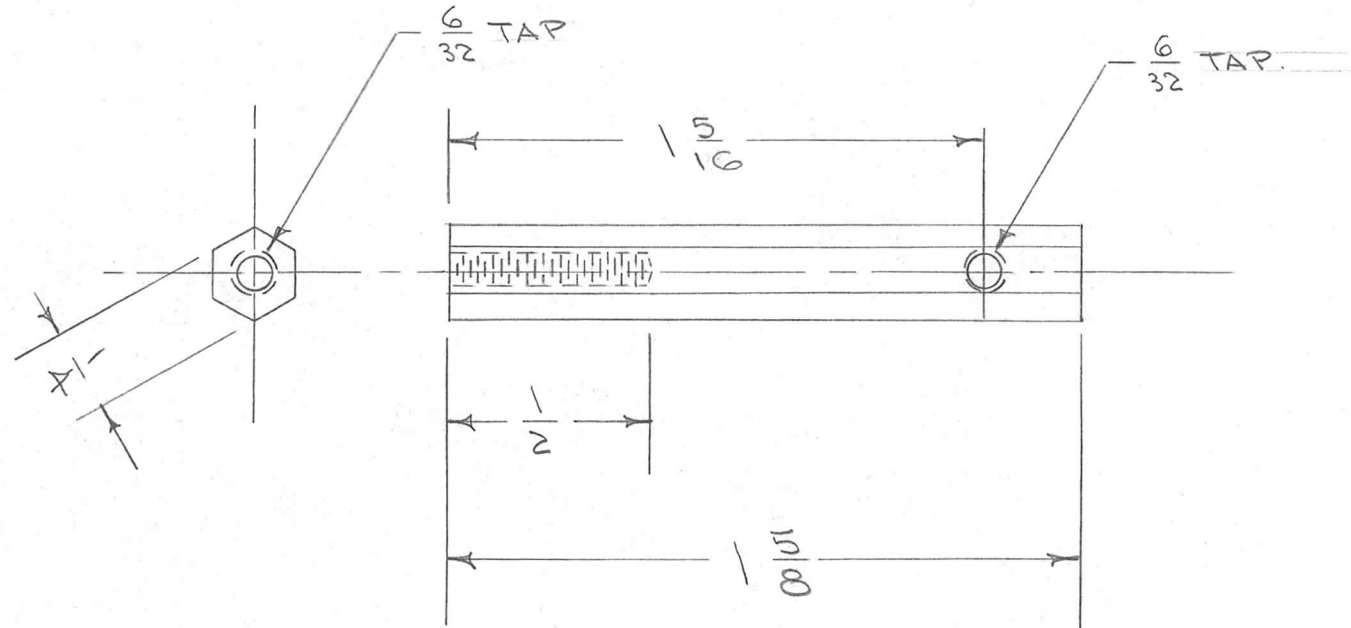
REQ.	ITEM	PART NO.	DESCRIPTION				SYMBOL
		3/8 HEX. ROD	THE TECHNICAL MATERIEL CORP. MAMARONECK, NEW YORK				
		STOCK SIZE	SPARK GAP POST				
		ALUMINUM	MODEL GPT				
		MATERIAL					
ISSUE	ITEM	CHANGED FROM	DATE	CH. NO.	DRAFTS	CHECKER	ENG. APP.
TOLERANCES			SCALE:				
DEC. DIM. $\pm$			MAXIMUM ALLOWABLE TOLERANCES HAVE BEEN DETERMINED AND ANY DEVIATIONS WILL BE CAUSE FOR REJECTION.				
FRAC. DIM. $\pm$			REMOVE ALL BURRS AND SHARP EDGES				
ANGULAR DIM. $\pm$			2011-T3			FAIR	A. J. J.
TYPE & TEMPER		HEAT TREAT. SPEC.	DRAWN	CHECKED	FINAL APPROVAL		
FINISH & SPEC. NO.					PM-368		
			ELEC. DES. APP.	MECH. DES. APP.			

REQ. PER UNIT	USED ON			PM-369	A
	MODEL	ASS'Y. NO.	DATE		
4	RTM-50		10-5-55		
4	RTM-2		10-16-58		



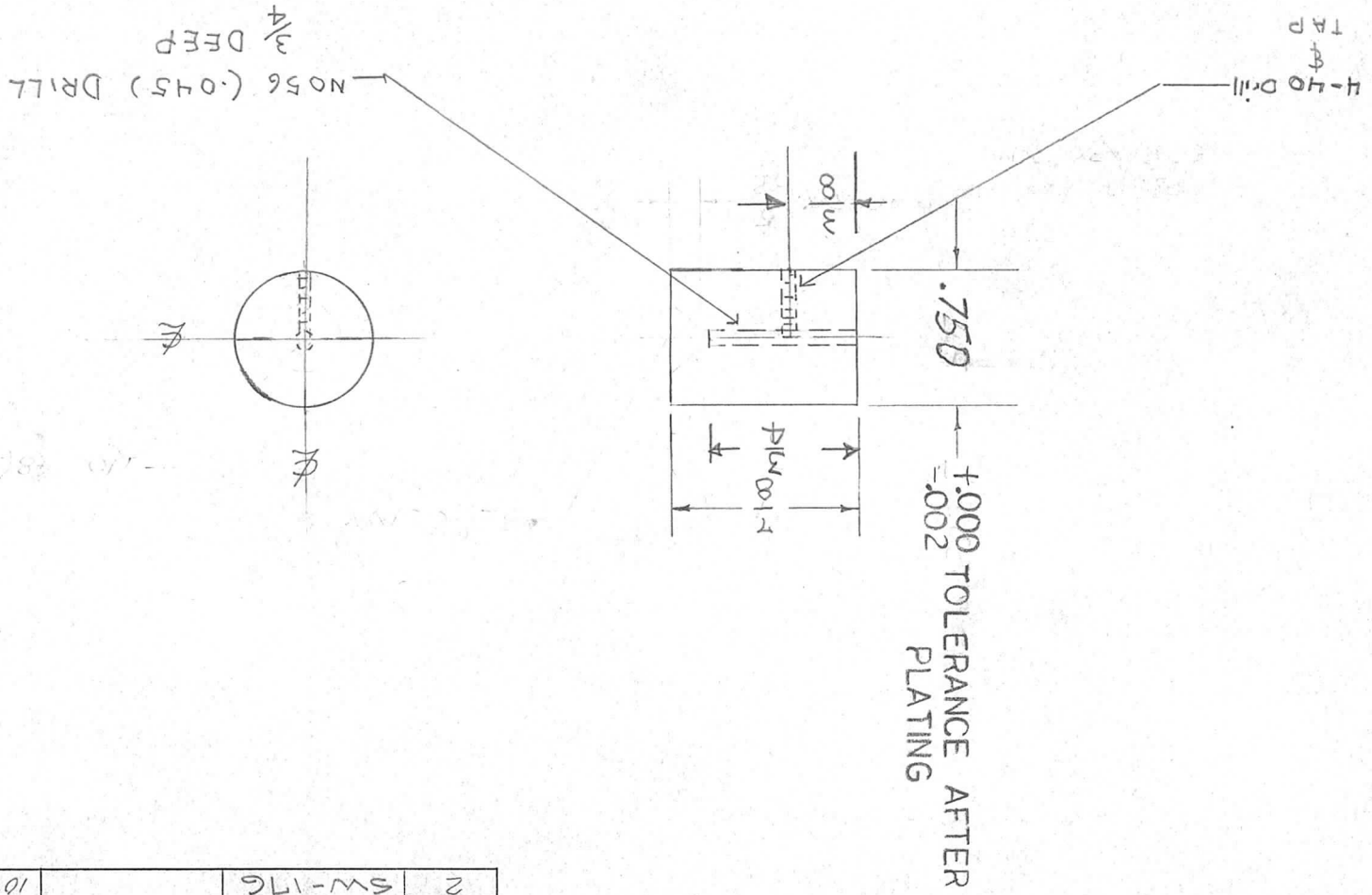
ISSUE	ITEM	CHANGED FROM	DATE	CH. NO.	DRAFTS	CHECKER	ENG. APP.	REQ. ITEM	PART NO.	DESCRIPTION	SYMBOL		
										THE TECHNICAL MATERIEL CORP. MAMARONECK, NEW YORK			
									1/2 X 1 ROD STOCK SIZE	SPACER TUBE SOCKET			
A	1	FINISH WAS CAD. PLATE	10/10/66	1	CAD	Jade	Wc		ALUMINUM	MODULATOR			
TOLERANCES								SCALE:					
DEC. DIM. ±			MAXIMUM ALLOWABLE TOLERANCES HAVE BEEN DETERMINED AND ANY DEVIATIONS WILL BE CAUSE FOR REJECTION.					2011-T3		-4		PB	
FRAC. DIM. ± 1/64			REMOVE ALL BURRS AND SHARP EDGES					S-101 CAUSTIC DIP		DRAWN		CHECKED	
ANGULAR DIM. ±								S-104 LACQUER		FINISH & SPEC. NO.		ELEC. DES. APP. MECH. DES. APP.	
										A. J. J.		PM-369 A	

REQ. PER UNIT	USED ON			PM-370	A
	MODEL	ASS'Y. NO.	DATE		
2	RTF		11/22/55		
2	RTF-2	1/C	11/22/58		



ISSUE	ITEM	CHANGED FROM	DATE	CH. NO.	DRAFTS	CHECKER	ENG. APP.	REQ. ITEM	PART NO.	DESCRIPTION	SYMBOL		
								1/4 HEX ROD.		THE TECHNICAL MATERIEL CORP. MAMARONECK, NEW YORK			
								STOCK SIZE					
A	1	1 5/16 WAS 1 3/8	3/27/56	1	13	John	WJ	ALUMINUM		BRACKET, INTER CONNECT TERM. BD. 1/C GPT-750			
TOLERANCES								SCALE:					
DEC. DIM. ± FRAC. DIM. ± 1/64 ANGULAR DIM. ±								MAXIMUM ALLOWABLE TOLERANCES HAVE BEEN DETERMINED AND ANY DEVIATIONS WILL BE CAUSE FOR REJECTION. REMOVE ALL BURRS AND SHARP EDGES					
								175T4	—H—	CSO 11/22/55	A. J. J.		
								S-101 CAUSTIC DIP		WJ 12/23/55	WJ	PM-370	A
								FINISH & SPEC. NO.		ELEC. DES. APP.	MECH. DES. APP.		

SYMBOL		DESCRIPTION	PART NO.	REQ. ITEM	STOCK SIZE	THE TECHNICAL MATERIEL CORP. MAMARONECK, NEW YORK		CONTACT	
D					3/4-DIA				
C					4-DIA				
C									
C									
B									
A									
ISSUE ITEM		CHANGED FROM	DATE	CH. NO.	DRAFTS	CHECKER	ENG. APP.	TOLERANCES	
D		REMOVED COUNT SINK	3/24/87					SCALE:	
C		ADD 4-40 TAP HOLE						MAXIMUM ALLOWABLE TOLERANCES HAVE BEEN DETERMINED AND ANY DEVIATIONS WILL BE CAUSE FOR REJECTION.	
C		HOLE FROM 48 TO 56 DIA						REMOVE ALL BURRS AND SHARP EDGES	
C		DIA 5/32 TO 1/8 DIA TO .750						DEC. DIM. ±	
B		ADD DIM. 71.5 ± .003	7.13.72	20785	GE	Q.		FRAG. DIM. ± √64	
A		1/8 WAS 1"	6-11-52	1	CSB	Q.		ANGULAR DIM. ±	
TOLERANCES		SCALE:		FINISH & SPEC. NO.		ELEC. DES. APP.		MECH. DES. APP.	
				NICKEL PLATE				PM-371 D	
				TYPE & TEMPER				FINAL APPROVAL	
				FREE TURNING				OAB	
				HEAT TREAT. SPEC.				CHECKED	
				DRAWN				PAW	
				M3 16-20-55					

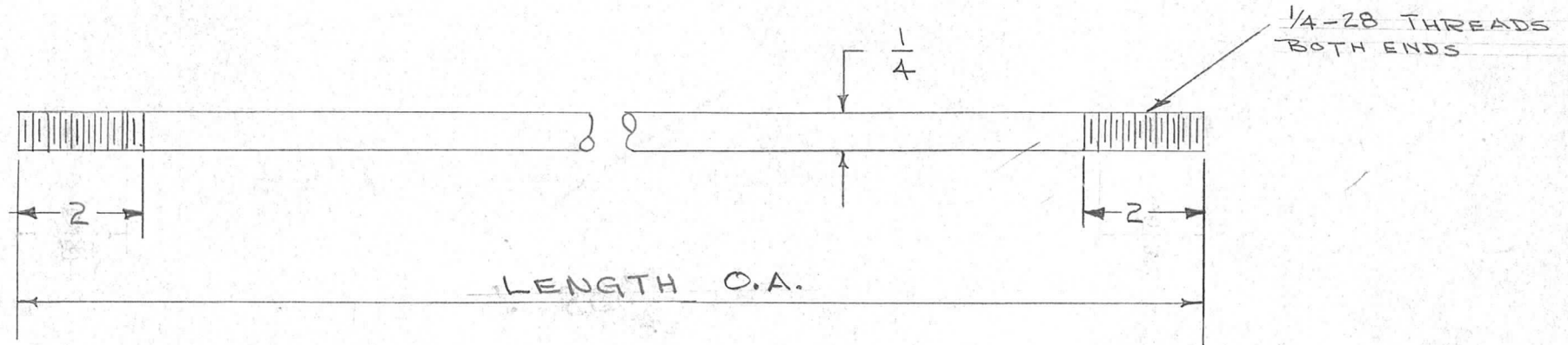


REQ. PER UNIT	MODEL	ASS'Y. NO.	DATE
2	5W-17G		10-20-55
USED ON			
PM-371 D			

TMC NO	LENGTH (OVER ALL)
PM-373-1	20 1/4
PM-373-2	14 5/8

LENGTH	REQ. PER UNIT	USED ON		
		MODEL	ASS'Y. NO.	DATE
20 1/4	3	TER-3500		11-9-55
20 1/4	3	TER-3500-70		10-23-57
14 5/8	4	TER-500-70		10-23-57
20 1/4	3	TER-3500-300	A-2053	2-8-61

PM-373 F



F		CHG'D DIM. 1 3/4 TO 2	9-12-66	16241	RME	JCK	MM
E	1	FINISH WAS CAD. DLATE	4-25-62	6628	EG	JCK	MM
D	2	PM-373-1 WAS PM-373	10/23/57	4	JCK	JCK	MM
	1	Standard Dwg Made					
C	2	1 3/4 WAS 1 5/16	5/21/57	3	JCK	JCK	MM
	1	20 1/4 WAS 20 7/8					
B	2	20 7/8 WAS 20 1/2	10/22/56	2	JCK	JCK	MM
	1	THD LGTH WAS 5/8					
A	2	MAT. WAS ALUMINUM	4/24/56	1	JCK	JCK	MM
	1	FIN. " S-101					

REQ. ITEM	PART NO.	DESCRIPTION	SYMBOL
	1/4" ROD	THE TECHNICAL MATERIEL CORP.	
	STOCK SIZE	MAMARONECK, NEW YORK	
	BRASS	SUPPORT ROD, RESISTOR	
	MATERIAL	TER	
	FREE TURNING	DDR. 11-9-55	
	TYPE & TEMPER	DRAWN	
	HEAT TREAT. SPEC.	CHECKED	
	FINISH & SPEC. NO.	ELEC. DES. APP.	
		MECH. DES. APP.	

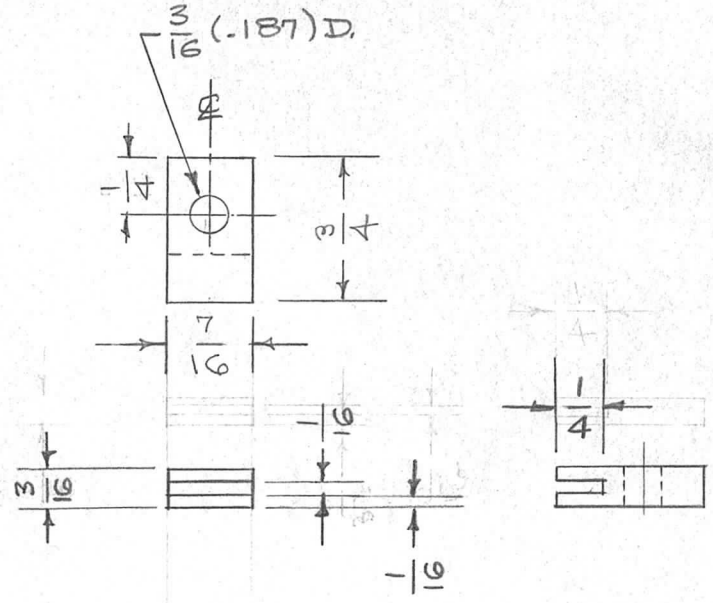
DEC. DIM. ±  
 FRAC. DIM. ± Y64  
 ANGULAR DIM. ±

SCALE:  
 MAXIMUM ALLOWABLE TOLERANCES HAVE BEEN DETERMINED AND ANY DEVIATIONS WILL BE CAUSE FOR REJECTION.  
 REMOVE ALL BURRS AND SHARP EDGES

PM-373 F

REQ. PER UNIT	USED ON		
	MODEL	ASS'Y. NO.	DATE
4	TER 3500	A-1142	11-10-55
4	TER3500-70	A-1142	10-23-57
4	TER500-70	A-1477	10-25-57
4	TER-3500-300	A-1142	

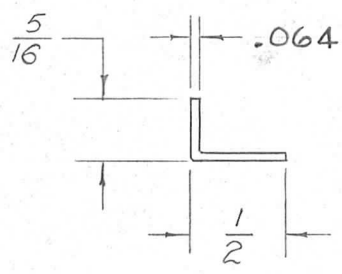
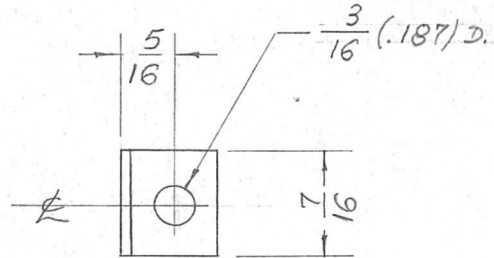
PM-375 B



ISSUE	ITEM	CHANGED FROM	DATE	CH. NO.	DRAFTS	CHECKER	ENG. APP.	REQ. ITEM	PART NO.	DESCRIPTION	SYMBOL						
B	1	Hole Added	10/25/57	2	16	FADE	<i>[Signature]</i>	3/16 THICK		THE TECHNICAL MATERIEL CORP. MAMARONECK. NEW YORK							
A	1	THK. WAS 1/8 - chg'd. to 3/16 thk.	2/14/57	1	16	FADE	<i>[Signature]</i>	BRASS		END CONTACT STRAP							
TOLERANCES								MATERIAL									
SCALE:								HALF HARD		CDD. 10/55		<i>[Signature]</i>					
DEC. DIM. ± FRAC. DIM. ± 1/64 ANGULAR DIM. ±								TYPE & TEMPER		HEAT TREAT. SPEC.		DRAWN		CHECKED		FINAL APPROVAL	
MAXIMUM ALLOWABLE TOLERANCES HAVE BEEN DETERMINED AND ANY DEVIATIONS WILL BE CAUSE FOR REJECTION. REMOVE ALL BURRS AND SHARP EDGES								FINISH & SPEC. NO.		ELEC. DES. APP.		MECH. DES. APP.		PM-375 B			

REQ. PER UNIT	USED ON		
	MODEL	ASS'Y. NO.	DATE
4	TER-3500	A-1142	11-23-55
4	TER-3500-70	A-1142	10-23-57
4	TER-500-70	A-1477	10-25-57
4	TER-3500-300	A-1142	2-8-61

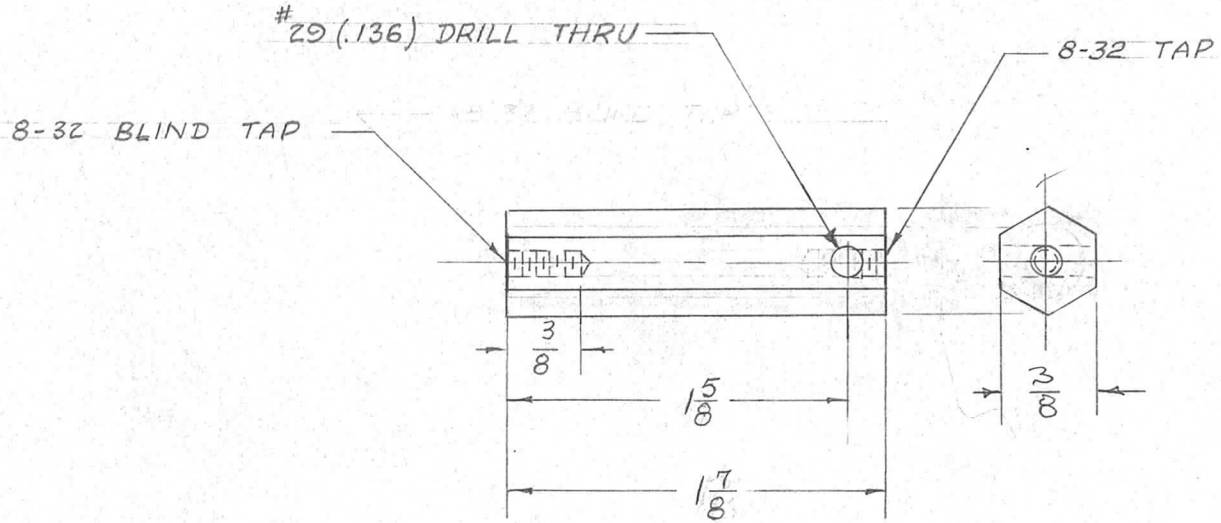
PM-378 A



ISSUE	ITEM	CHANGED FROM	DATE	CH. NO.	DRAFTS	CHECKER	ENG. APP.	REQ. ITEM	PART NO.	DESCRIPTION	SYMBOL		
									.064	THE TECHNICAL MATERIEL CORP. MAMARONECK. NEW YORK			
									STOCK SIZE				
A	1	STOCK SIZE WAS 1/16	7-31-62	+	G.S.				BRASS	END, CONTACT STRAP			
									MATERIAL	TER-3500			
TOLERANCES								SCALE:					
DEC. DIM. $\pm$								MAXIMUM ALLOWABLE TOLERANCES HAVE BEEN DETERMINED AND ANY DEVIATIONS WILL BE CAUSE FOR REJECTION.					
FRAC. DIM. $\pm 1/60$								REMOVE ALL BURRS AND SHARP EDGES					
ANGULAR DIM. $\pm$													
									TYPE & TEMPER	HEAT TREAT. SPEC.	DRAWN	CHECKED	FINAL APPROVAL
									FINISH & SPEC. NO.	ELEC. DES. APP.	MECH. DES. APP.		
													PM-378 A

REQ. PER UNIT	USED ON		
	MODEL	ASS'Y. NO.	DATE
2	TER-3500		12/2/55
2	TER-500		2/29/57

PM-380 C

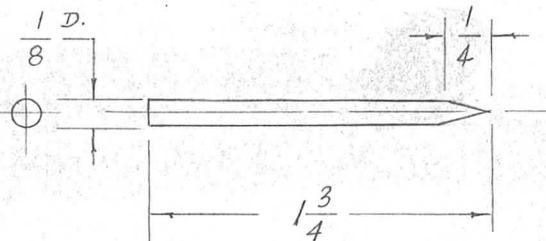


ISSUE	ITEM	CHANGED FROM	DATE	CH. NO.	DRAFTS	CHECKER	ENG. APP.	REQ. ITEM	PART NO.	DESCRIPTION	SYMBOL
C		FINISH WAS S105 CAD PL.	3-4-66	15885							
B	1	8-32 TAP WAS 6-32	2-21-57	1	SC.				3/8 D. HEX ROD	THE TECHNICAL MATERIEL CORP.	
									STOCK SIZE	MAMARONECK,	
A	2	15/8 WAS 13/4	12-22-55	1	PB				BRASS	POST	
	1	17/8 WAS 2							MATERIAL	TER-3500	
TOLERANCES			SCALE:			FREE TURNING					
DEC. DIM. ±			MAXIMUM ALLOWABLE TOLERANCES HAVE BEEN DETERMINED AND ANY DEVIATIONS WILL BE CAUSE FOR REJECTION.			TYPE & TEMPER		HEAT TREAT. SPEC.	DRAWN	CHECKED	FINAL APPROVAL
FRAC. DIM. ± Y64			REMOVE ALL BURRS AND SHARP EDGES			S135 NICKEL PL.-BRIGHT					
ANGULAR DIM. ±						FINISH & SPEC. NO.		ELEC. DES. APP.	MECH. DES. APP.	PM-380	C



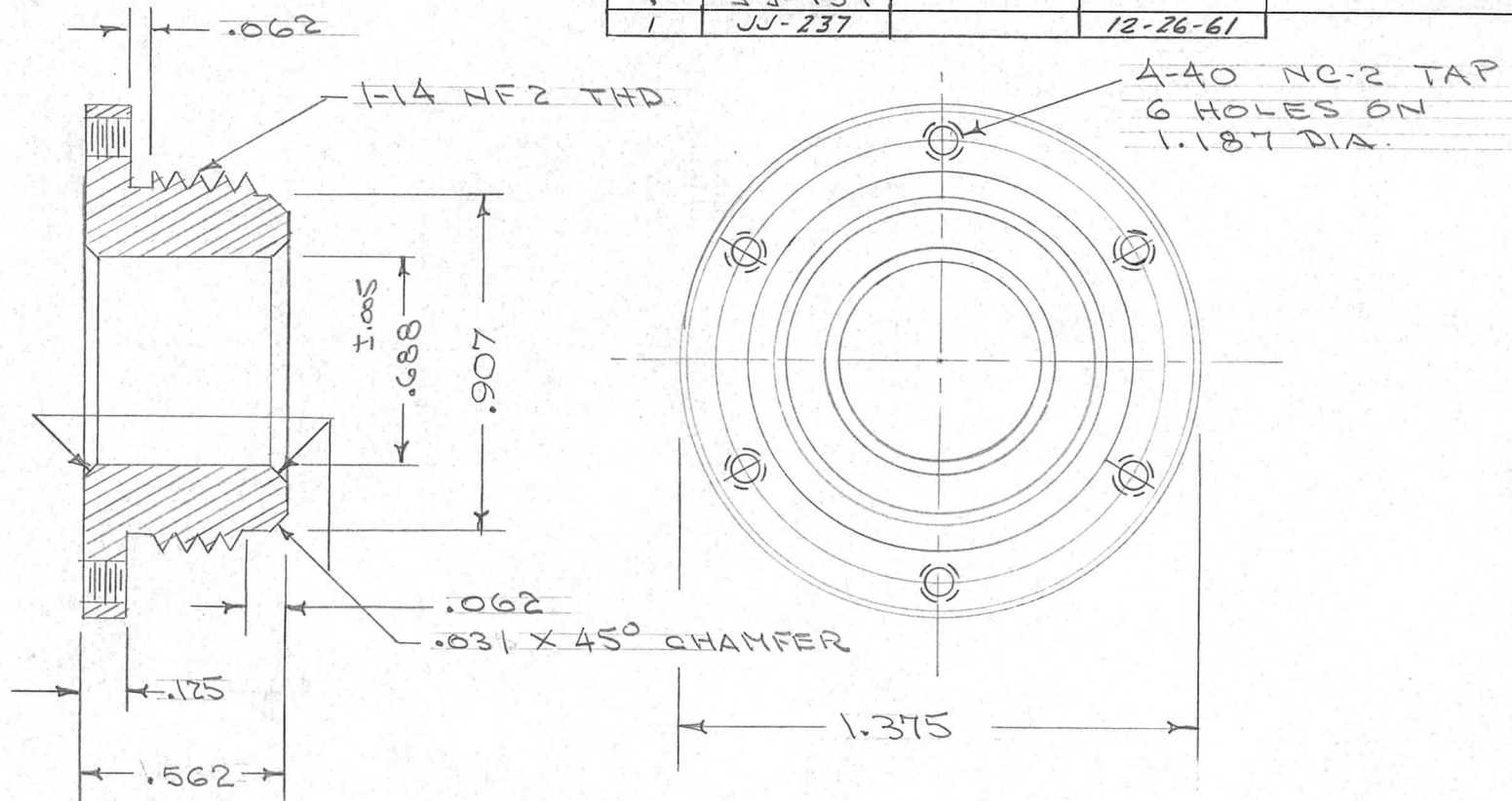
REQ. PER UNIT	USED ON		
	MODEL	ASS'Y. NO.	DATE
2	TER-3500	A-1378	12-2-55
1	TER-3500-70	A-1472	10/18/57
1	TER-500-70	A-1475	"
2	TER-500	A-1224	10-23-57
1	TER.3500-300	A-2052	2-8-61

PM-381



REQ.	ITEM	PART NO.	DESCRIPTION				SYMBOL
		$\frac{1}{8}$ D.	THE TECHNICAL MATERIEL CORP. MAMARONECK, NEW YORK				
		STOCK SIZE					
		BRASS	SPARK ROD				
		MATERIAL					
ISSUE	ITEM	CHANGED FROM	DATE	CH. NO.	DRAFTS	CHECKER	ENG. APP.
TOLERANCES			SCALE:				
DEC. DIM. $\pm$			MAXIMUM ALLOWABLE TOLERANCES HAVE BEEN DETERMINED AND ANY DEVIATIONS WILL BE CAUSE FOR REJECTION. REMOVE ALL BURRS AND SHARP EDGES				
FRAC. DIM. $\pm$ $\frac{1}{64}$							
ANGULAR DIM. $\pm$							
TYPE & TEMPER		HEAT TREAT. SPEC.	DRAWN	CHECKED	FINAL APPROVAL		
S-105 CADMIUM PLATE			ARB	WDC	PM-381		
FINISH & SPEC. NO.		ELEC. DES. APP.	MECH. DES. APP.				

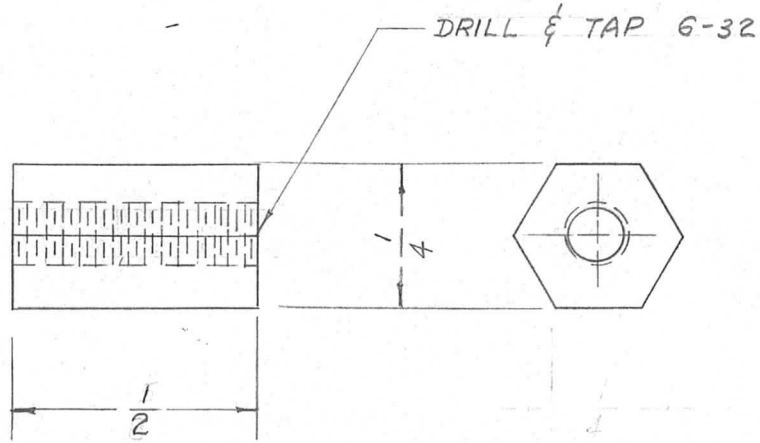
REQ. PER UNIT	USED ON			PM-382	A
	MODEL	ASS'Y. NO.	DATE		
1	JJ-134	-			
1	JJ-237		12-26-61		



MATERIAL SPEC.: FED. SPEC. 00-B-626, COMP. 22, HALF HARD  
 PART TO BE SILVER PLATED .0002 MIN., PLATING TO BE DENSE, NON POROUS & OF SMALL GRAIN.  
 DIM. SHOWN ARE AFTER PLATING, PART TO BE FREE FROM BURRS & CHIPS.

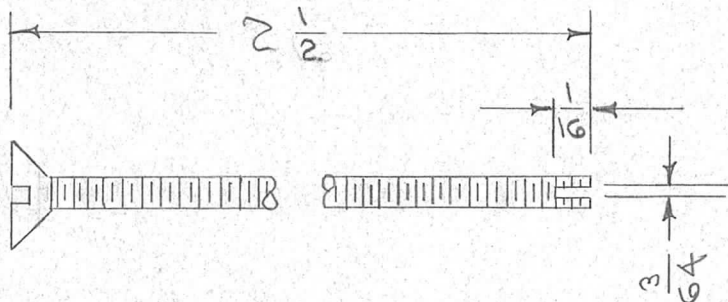
REQ.	ITEM	PART NO.	DESCRIPTION				SYMBOL
			THE TECHNICAL MATERIEL CORP. MAMARONECK, NEW YORK				
			FLANGE				
A	1	.907 DIM. WAS .937	2-15-62	6365	JJ	<del>SM</del> chm	
ISSUE	ITEM	CHANGED FROM	DATE	CH. NO.	DRAFTS	CHECKER	ENG. APP.
TOLERANCES			SCALE:				
DEC. DIM. ± .015			MAXIMUM ALLOWABLE TOLERANCES HAVE BEEN DETERMINED AND ANY DEVIATIONS WILL BE CAUSE FOR REJECTION.				
FRAC. DIM. ±			REMOVE ALL BURRS AND SHARP EDGES				
ANGULAR DIM. ± 1/2°							
		1/2 HARD	CDD.		HQA		WR
		TYPE & TEMPER	HEAT TREAT. SPEC.		DRAWN		CHECKED
		SILVER PLATED					
		.0002					
		FINISH & SPEC. NO.	ELEC. DES. APP.		MECH. DES. APP.		
							PM-382
							A

REQ. PER UNIT	USED ON			PM-385	A
	MODEL	ASS'Y. NO.	DATE		
2			12-16-55		



ISSUE	ITEM	CHANGED FROM	DATE	CH. NO.	DRAFTS	CHECKER	ENG. APP.	REQ. ITEM	PART NO.	DESCRIPTION	SYMBOL		
								1/4	HEX.	THE TECHNICAL MATERIEL CORP. MAMARONECK, NEW YORK	A		
									STOCK SIZE				
A	1	1/2 WAS 5/8	2-2-56	1	PB	JAL	HH		ALUMINUM	SPACER, PANEL SUPPORT			
									MATERIAL				
TOLERANCES			SCALE:					175-T4	—H—	PB 12-16-55	G.T.O.		
DEC. DIM. ±			MAXIMUM ALLOWABLE TOLERANCES HAVE BEEN DETERMINED AND ANY DEVIATIONS WILL BE CAUSE FOR REJECTION. REMOVE ALL BURRS AND SHARP EDGES					TYPE & TEMPER		HEAT TREAT. SPEC.	DRAWN	CHECKED	FINAL APPROVAL
FRAC. DIM. ± 1/64								6-101		CAUSTIC DIP		HHH	WDC
ANGULAR DIM. ±								FINISH & SPEC. NO.		ELEC. DES. APP.	MECH. DES. APP.		

REQ. PER UNIT	USED ON			PM-388	A
	MODEL	ASSY. NO.	DATE		
1	RTF		1-10-56		



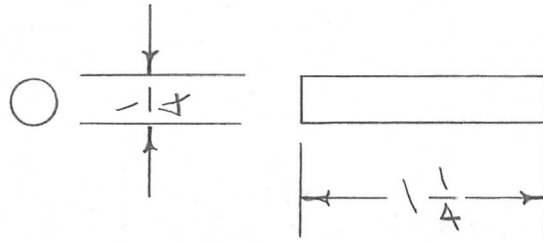
USE SCFS0832BC40  
MODIFY AS SHOWN

NOTE:  
USED ONLY ON RTF SERIAL NOS.  
100-114 INCLUSIVE.

ISSUE	ITEM	CHANGED FROM	DATE	CH. NO.	DRAFTS	CHECKER	ENG. APP.	REQ. ITEM	PART NO.	DESCRIPTION	SYMBOL	
								SCFS0832BC40		THE TECHNICAL MATERIEL CORP. MAMARONECK, NEW YORK		
								STOCK SIZE		SHAFT, ROTOR		
A	1	STOCK SIZE WAS SC-131-0832 BC40	3/1/56	1	CRD	WJC	WJC			POWER AMP.		
TOLERANCES								SCALE:		CRD. 1/10/55	WJC	
DEC. DIM. ±			MAXIMUM ALLOWABLE TOLERANCES HAVE BEEN DETERMINED AND ANY DEVIATIONS WILL BE CAUSE FOR REJECTION.					TYPE & TEMPER	HEAT TREAT. SPEC.	DRAWN	CHECKED	FINAL APPROVAL
FRAC. DIM. ±			REMOVE ALL BURRS AND SHARP EDGES					NONE			WJC	PM-388
ANGULAR DIM. ±								FINISH & SPEC. NO.		ELEC. DES. APP.	MECH. DES. APP.	A

REQ. PER UNIT	USED ON		
	MODEL	ASS'Y. NO.	DATE
2	RAC 30-A	A-1176	2-2-56
2	ML-A-1122		5-1-58

PM-393

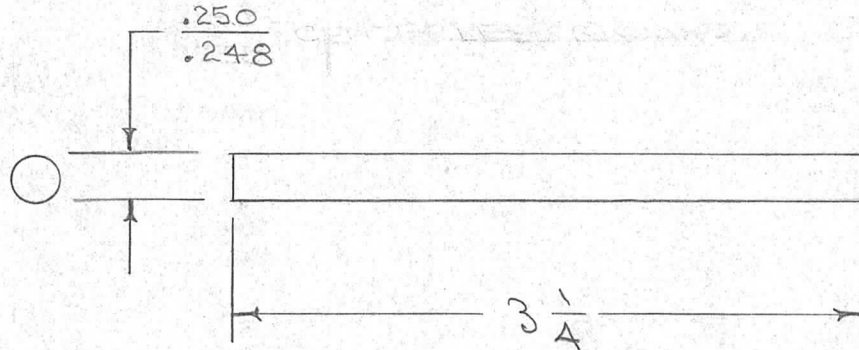


ISSUE	ITEM	CHANGED FROM	DATE	CH. NO.	DRAFTS	CHECKER	ENG. APP.	REQ. ITEM	PART NO.	DESCRIPTION	SYMBOL	
									1/4 D. ROD.	THE TECHNICAL MATERIEL CORP. MAMARONECK, NEW YORK		
									STOCK SIZE			
									BRASS	BUSS ROD		
									MATERIAL	RAC-30A		
								FREE TURNING		CDD 2-2-56	JAD	
								TYPE & TEMPER	HEAT TREAT. SPEC.	DRAWN	CHECKED	FINAL APPROVAL
								S-105, CAD. PLATE	.0002		WR	PM-393
								FINISH & SPEC. NO.	ELEC. DES. APP.	MECH. DES. APP.		

DEC. DIM.  $\pm$   
 FRAC. DIM.  $\pm \frac{1}{64}$   
 ANGULAR DIM.  $\pm$

MAXIMUM ALLOWABLE TOLERANCES HAVE BEEN DETERMINED AND ANY DEVIATIONS WILL BE CAUSE FOR REJECTION.  
 REMOVE ALL BURRS AND SHARP EDGES

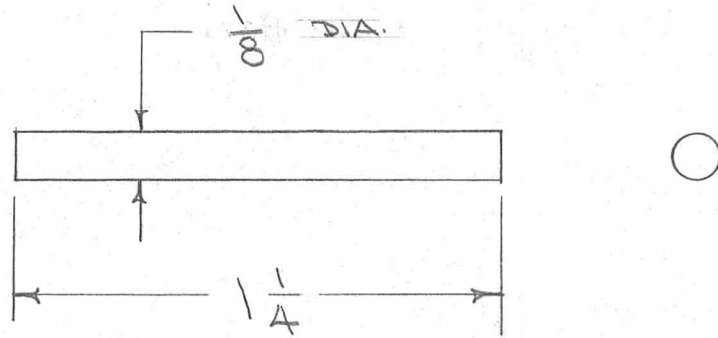
REQ. PER UNIT	USED ON			PM-394	A
	MODEL	ASS'Y. NO.	DATE		
1	RTF		2-3-56		
1	RTF-2	MULT	11-20-58		



IF ROD IS OYERSIZE ETCH TO .250/.248

ISSUE	ITEM	CHANGED FROM	DATE	CH. NO.	DRAFTS	CHECKER	ENG. APP.	REQ. ITEM	PART NO.	DESCRIPTION	SYMBOL	
									1/4 DIA.	THE TECHNICAL MATERIEL CORP. MAMARONECK, NEW YORK		
									STOCK SIZE			
A	1	ROD WAS 9/32 CG.	4/20/56	1	CDW	JADE	WJ		ALUMINUM	SHAFT, RT. ANGLE DRIVE (MULT.)		
									MATERIAL			
									2017 T4	CDW 2/3/56	JADE	
									TYPE & TEMPER	CHECKED	WJ	
									HEAT TREAT. SPEC.			
									S-101 CAUSTIC DIP			
									S-107 LACQUER			
									FINISH & SPEC. NO.	ELEC. DES. APP.	MECH. DES. APP.	
											PM-394 A	
TOLERANCES			SCALE:					MAXIMUM ALLOWABLE TOLERANCES HAVE BEEN DETERMINED AND ANY DEVIATIONS WILL BE CAUSE FOR REJECTION. REMOVE ALL BURRS AND SHARP EDGES				
DEC. DIM. $\pm$												
FRAC. DIM. $\pm$ 1/64												
ANGULAR DIM. $\pm$												

REQ. PER UNIT	USED ON			PM-395
	MODEL	ASS'Y. NO.	DATE	
1	RTF	A-1233	2-6-56	

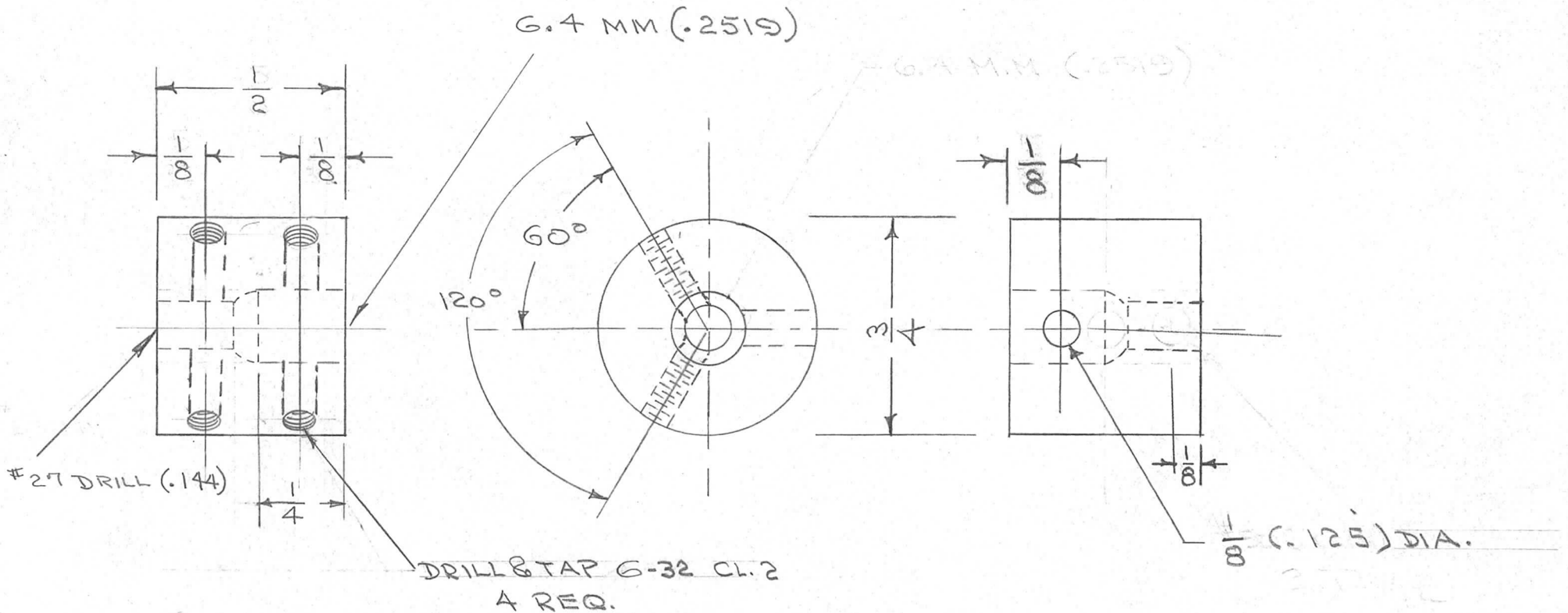


ISSUE	ITEM	CHANGED FROM	DATE	CH. NO.	DRAFTS	CHECKER	ENG. APP.	REQ. ITEM	PART NO.	DESCRIPTION	SYMBOL	
								$\frac{1}{8}$ DIA.		THE TECHNICAL MATERIEL CORP. MAMARONECK, NEW YORK		
								STOCK SIZE				
								BRASS ROD		STOP, CAPACITOR		
								MATERIAL		POW/AMP		
								FREE CUTTING		CDR. 7612		
								TYPE & TEMPER	HEAT TREAT. SPEC.	DRAWN	CHECKED	FINAL APPROVAL
								SEE A-1233			OK 2/6/56	PM-395
								FINISH & SPEC. NO.		ELEC. DES. APP.	MECH. DES. APP.	

TOLERANCES  
 DEC. DIM.  $\pm$   
 FRAC. DIM.  $\pm \frac{1}{64}$   
 ANGULAR DIM.  $\pm$

SCALE:  
 MAXIMUM ALLOWABLE TOLERANCES HAVE BEEN DETERMINED AND ANY DEVIATIONS WILL BE CAUSE FOR REJECTION.  
 REMOVE ALL BURRS AND SHARP EDGES

REQ. PER UNIT	USED ON			PM-396	B
	MODEL	ASS'Y. NO.	DATE		
1	RTF	A-1233	2-6-56		



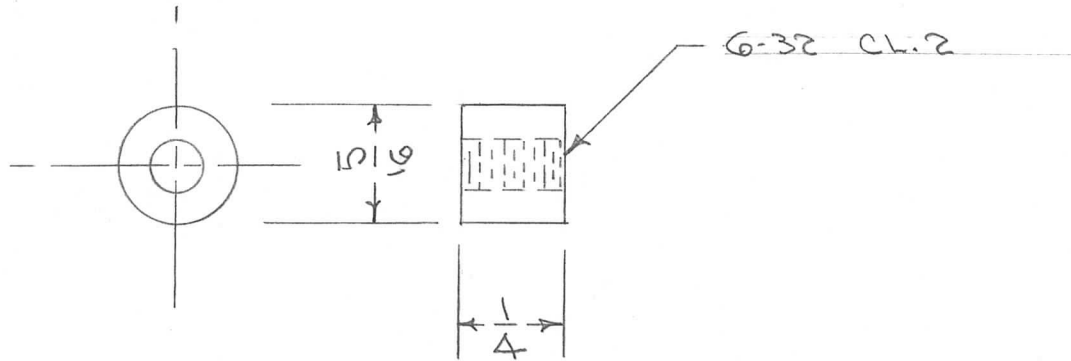
ISSUE	ITEM	CHANGED FROM	DATE	CH. NO.	DRAFTS	CHECKER	ENG. APP.	REQ. ITEM	PART NO.	DESCRIPTION	SYMBOL		
B	1	COMPLETELY REVISED	9/19/56	2	FAIR	ODD	WJ		3/4 DIA.	THE TECHNICAL MATERIEL CORP. MAMARONECK, NEW YORK			
A	1	8-32 was G-32	7/27/56	1	FAIR	ODD	WJ		STOCK SIZE	COUPLING, STOP			
									BRASS	POW/AMP.			
									MATERIAL				
									FREE TURNING	ODD 7/6/56	WJ		
									TYPE & TEMPER	HEAT TREAT. SPEC.	DRAWN	CHECKED	FINAL APPROVAL
									SEE A-1233		ODD 7/6/56		
									FINISH & SPEC. NO.	ELEC. DES. APP.	MECH. DES. APP.		
												PM-396	B

DEC. DIM. ±  
FRAC. DIM. ± 1/64  
ANGULAR DIM. ±

SCALE:  
MAXIMUM ALLOWABLE TOLERANCES HAVE BEEN DETERMINED AND ANY DEVIATIONS WILL BE CAUSE FOR REJECTION.  
REMOVE ALL BURRS AND SHARP EDGES



REQ. PER UNIT	USED ON			PM-399
	MODEL	ASS'Y. NO.	DATE	
1	RTF		2-6-56	



NOTE  
USED ONLY ON RTF SERIAL NOS  
100 - 114 INCLUSIVE

ISSUE	ITEM	CHANGED FROM	DATE	CH. NO.	DRAFTS	CHECKER	ENG. APP.	REQ. ITEM	PART NO.	DESCRIPTION	SYMBOL	
								5/16 D. ROD		THE TECHNICAL MATERIEL CORP. MAMARONECK, NEW YORK		
								STOCK SIZE				
								ALUMINUM		SPRING GUIDE		
								MATERIAL		POW/AMP		
								17S TA		CSD 2/6/56		
TOLERANCES			SCALE:					TYPE & TEMPER	HEAT TREAT. SPEC.	DRAWN	CHECKED	FINAL APPROVAL
DEC. DIM. $\pm$			MAXIMUM ALLOWABLE TOLERANCES HAVE BEEN DETERMINED AND ANY DEVIATIONS WILL BE CAUSE FOR REJECTION. REMOVE ALL BURRS AND SHARP EDGES					S-101 CAUSTIC DIP				WDC
FRAC. DIM. $\pm 1/64$												
ANGULAR DIM. $\pm$								FINISH & SPEC. NO.	ELEC. DES. APP.	MECH. DES. APP.		
												PM-399