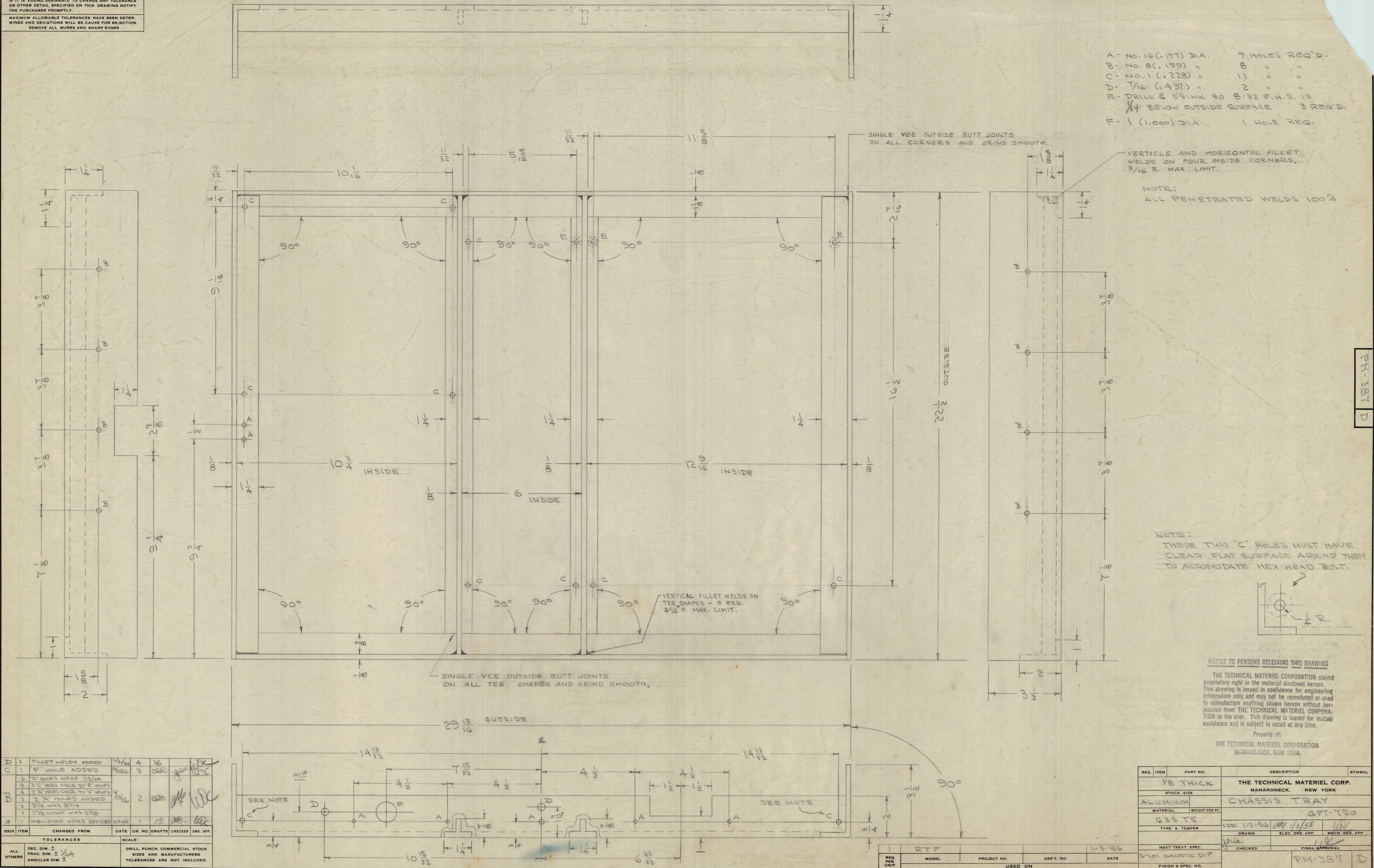


IF IT IS FOUND DESIRABLE TO CHANGE ANY TOLERANCE OR OTHER DETAIL SPECIFIED ON THIS DRAWING NOTIFY THE PURCHASER PROMPTLY.
 MAXIMUM ALLOWABLE TOLERANCES HAVE BEEN DETERMINED AND DEVIATIONS WILL BE CAUSE FOR REJECTION. REMOVE ALL BURRS AND SHARP EDGES

- A - No. 16 (.177) DIA. 7 HOLES REQ'D.
- B - No. 8 (.199) " 8 " "
- C - No. 1 (.228) " 11 " "
- D - 7/16 (.437) " 2 " "
- E - DRILL & CSINK 90 B-32 F.H.S. 15 3/4 BELOW OUTSIDE SURFACE 3 REQ'D.
- F - 1 (1.000) DIA. 1 HOLE REQ.



VERTICLE AND HORIZONTAL FILLET WELDS ON FOUR INSIDE CORNERS, 3/16 R. MAX. LIMIT.
 NOTE: ALL PENETRATED WELDS 100%

NOTE: THESE TWO "C" HOLES MUST HAVE CLEAR FLAT SURFACE AROUND THEM TO ACCOMODATE HEX HEAD BOLT.

NOTICE TO PERSONS RECEIVING THIS DRAWING
 THE TECHNICAL MATERIEL CORPORATION claims proprietary right in the material disclosed hereon. This drawing is issued in confidence for engineering information only and may not be reproduced or used to manufacture anything shown hereon without permission from THE TECHNICAL MATERIEL CORPORATION to the user. This drawing is loaned for mutual assistance and is subject to recall at any time.
 Property of:
 THE TECHNICAL MATERIEL CORPORATION
 MAMARONECK, NEW YORK

ISSUE	ITEM	CHANGED FROM	DATE	CN. NO.	DRAFTS	CHECKER	ENG. APP.
D	1	FILLET WELDS ADDED	1/21/64	4	16		
C	1	"F" HOLE ADDED	2/2/64	3	16		
B	6	"D" HOLES WERE 25/64					
B	5	"C" HOLES CHGR TO "E" HOLES					
B	4	"A" HOLES CHGR TO "C" HOLES					
B	3	"A" HOLES ADDED	4/30/64	2	16		
B	2	"A" WAS 5/16					
B	1	"C" WAS 23/16					
A	1	WELDING NOTES REVISED	2/2/64	1	13		

TOLERANCES	SCALE:
ALL DEC. DIM. ± 1/64 FRAC. DIM. ± 1/64 ANGULAR DIM. ±	DRILL, PUNCH, COMMERCIAL STOCK SIZES AND MANUFACTURERS TOLERANCES ARE NOT INCLUDED.

REQ. ITEM	PART NO.	DESCRIPTION	SYMBOL
1	RTF	PROJECT NO.	1-3-56
1	MODEL	ASBY. NO.	
1	PER UNIT	DATE	
1		HEAT TREAT. SPEC.	
1		TYPE & TEMPER.	
1		FINISH & SPEC. NO.	

PM-387 D