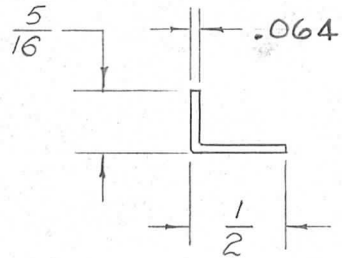
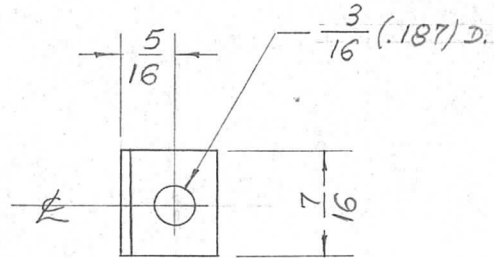


REQ. PER UNIT	USED ON		
	MODEL	ASS'Y. NO.	DATE
4	TER-3500	A-1142	11-23-55
4	TER-3500-70	A-1142	10-23-57
4	TER-500-70	A-1477	10-25-57
4	TER-3500-300	A-1142	2-8-61

PM-378 A



ISSUE	ITEM	CHANGED FROM	DATE	CH. NO.	DRAFTS	CHECKER	ENG. APP.	REQ. ITEM	PART NO.	DESCRIPTION	SYMBOL						
									.064	THE TECHNICAL MATERIEL CORP. MAMARONECK. NEW YORK							
									STOCK SIZE								
									BRASS	END, CONTACT STRAP							
									MATERIAL	TER-3500							
A	1	STOCK SIZE WAS 1/16	7-31-62	+	G.S.												
TOLERANCES			SCALE:														
DEC. DIM. ±			MAXIMUM ALLOWABLE TOLERANCES HAVE BEEN DETERMINED AND ANY DEVIATIONS WILL BE CAUSE FOR REJECTION. REMOVE ALL BURRS AND SHARP EDGES					TYPE & TEMPER		HEAT TREAT. SPEC.		DRAWN		CHECKED		FINAL APPROVAL	
FRAC. DIM. ± 1/6 ^x								FINISH & SPEC. NO.		ELEC. DES. APP.		MECH. DES. APP.					
ANGULAR DIM. ±																	
										PB 11-23/55		JNS		APRS			
												we		PM-378		A	