

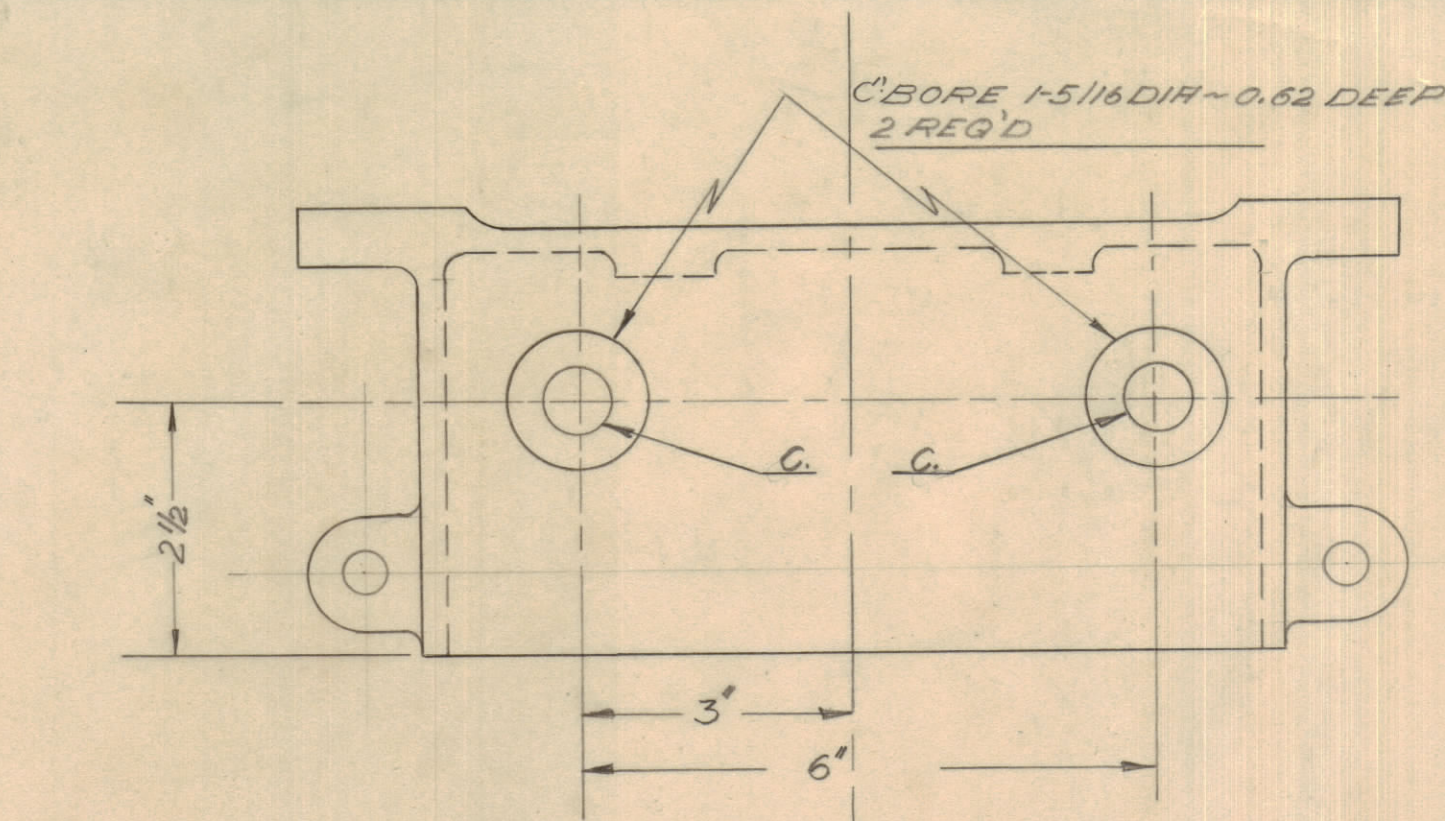
IF IT IS FOUND DESIRABLE TO CHANGE ANY TOLERANCE OR OTHER DETAIL SPECIFIED ON THIS DRAWING NOTIFY THE PURCHASER PROMPTLY.

MAXIMUM ALLOWABLE TOLERANCES HAVE BEEN DETERMINED AND DEVIATIONS WILL BE CAUSE FOR REJECTION. REMOVE ALL BURRS AND SHARP EDGES

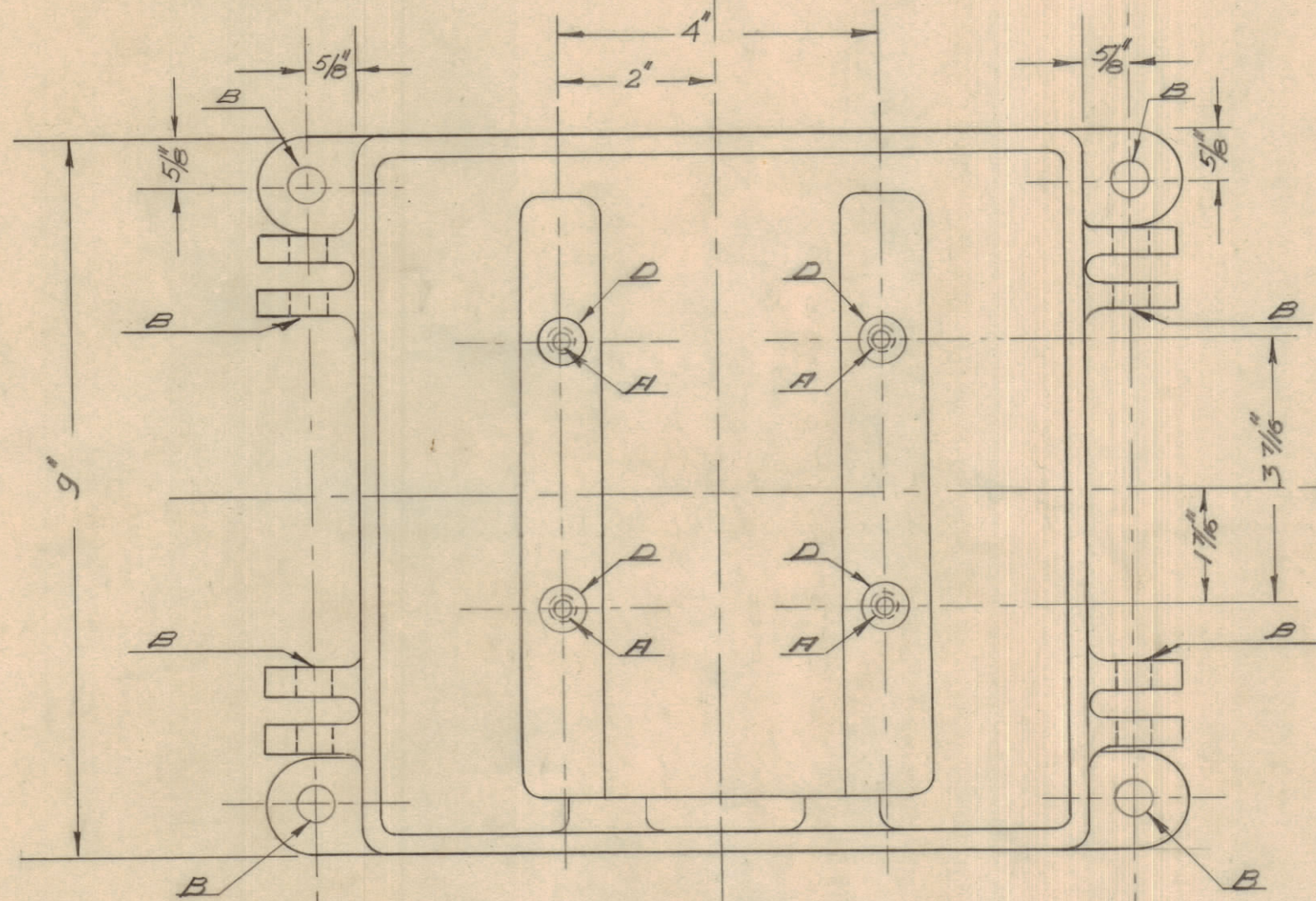
**NOTICE TO PERSONS RECEIVING THIS DRAWING**

THE TECHNICAL MATERIEL CORPORATION claims proprietary right in the material disclosed hereon. This drawing is issued in confidence for engineering information only and may not be reproduced or used to manufacture anything shown hereon without permission from THE TECHNICAL MATERIEL CORPORATION to the user. This drawing is loaned for mutual assistance and is subject to recall at any time.

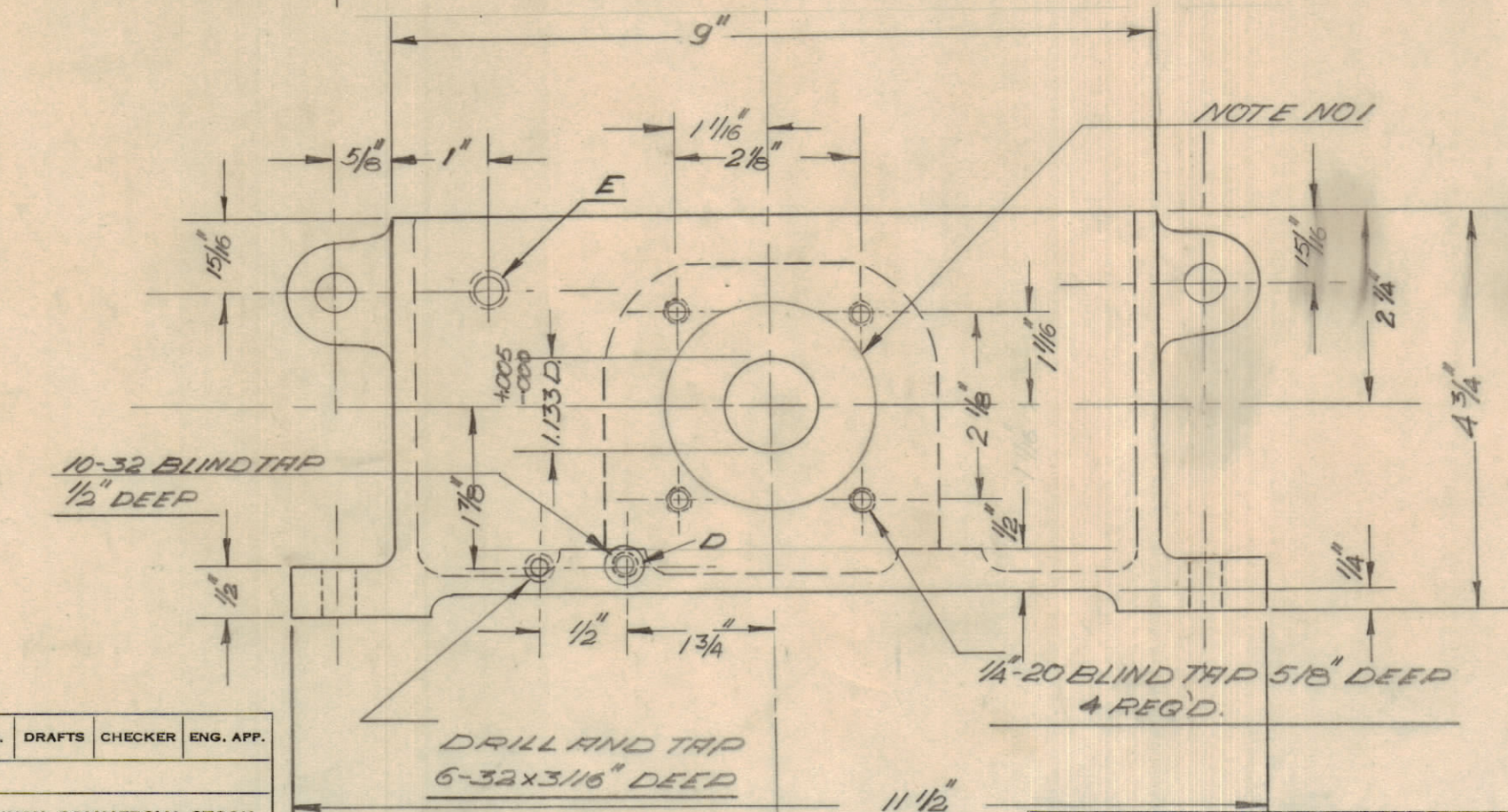
Property of:  
THE TECHNICAL MATERIEL CORPORATION  
MAMARONECK, NEW YORK



LETTER	DESCRIPTION	REQ'D
A	5/32 BLIND TAP 3/8" DEEP	4
B	33/64 (.515) D	12
C	5/8" (.625)	2
D	1/2 (.500) D C' BORE SLIGHTLY TO REMOVE PAINT.	5
E	DRILL AND TAP 1/8" x 27	



TOP SURFACE MACHINED SMOOTH



NOTE NO 1

Note NO 1  
C BORE 2.500 D .156 DEEP  
DEPTH OF C BORE TO BE PARALLEL WITH OUTSIDE SURFACE

FINISH  
S-101-COUSTIC DIP  
S-114-ZINK CHROMATE PRIMER  
S-115-SMOOTH GREY ENAMEL

B PH372

ISSUE	ITEM	CHANGED FROM	DATE	CN. NO.	DRAFTS	CHECKER	ENG. APP.
TOLERANCES				SCALE:			
ALL OTHERS	DEC. DIM. ±	FRAC. DIM. ±	ANGULAR DIM. ±	DRILL, PUNCH, COMMERCIAL STOCK SIZES AND MANUFACTURERS TOLERANCES ARE NOT INCLUDED.			

MODEL	PROJECT No.	ASS'Y. No.	DATE
RFIC-1B	USED ON		

REQ.	ITEM	PART No.	DESCRIPTION	SYMBOL
			<b>TMC (Canada) LIMITED</b>	
			OTTAWA ONTARIO	
			CHASE MACHINING	
			MODEL RFIC-1B	
DRAWN		ELEC. DES. APP.		MECH. DES. APP.
CHECKED		FINAL APPROVAL		
		PH-372		B