

IF IT IS FOUND DESIRABLE TO CHANGE ANY TOLERANCE OR OTHER DETAIL SPECIFIED ON THIS DRAWING NOTIFY THE PURCHASER PROMPTLY.

PM-306

MAXIMUM ALLOWABLE TOLERANCES HAVE BEEN DETERMINED AND DEVIATIONS WILL BE CAUSE FOR REJECTION. REMOVE ALL BURRS AND SHARP EDGES

REQ. PER UNIT

USED ON

MODEL

PROJECT NO.

ASS'Y. NO.

DATE

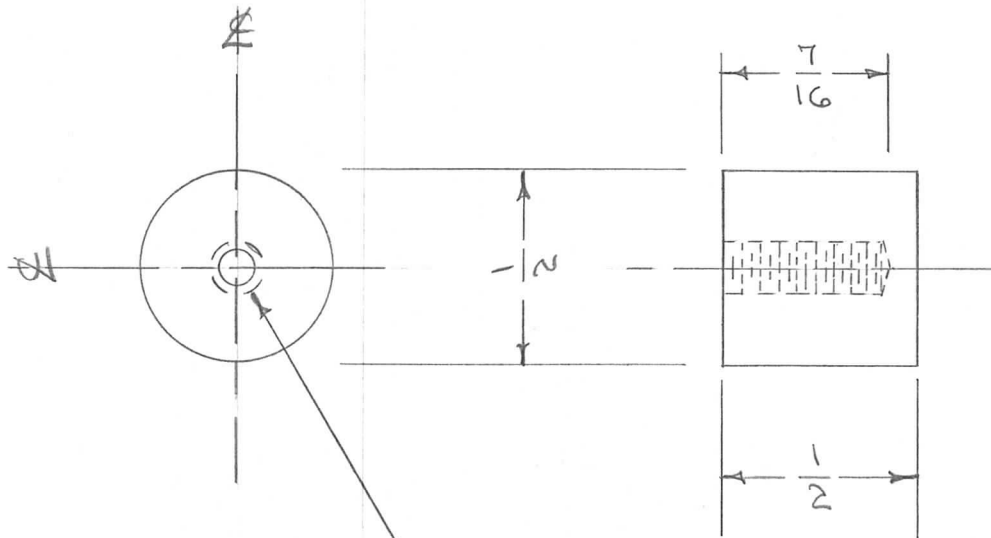
12

RTB

158

A-169

7-29-54



DRILL & TAP 8-32 X 7/16 DEEP.

REQ.	ITEM	PART NO.	DESCRIPTION	SYMBOL
	1/2 ROD.		THE TECHNICAL MATERIEL CORP.	
	STOCK SIZE		MAMARONECK, NEW YORK	
	BRASS	—#—	CONTACT	
	MATERIAL	WEIGHT PER PC.		
	FREE TURNING			
	TYPE & TEMPER		C.D.D. 7-29-54	
	#		ARB	WDC
	HEAT TREAT. SPEC.		DRAWN	ELEC. DES. APP. MECH. DES. APP.
			FADE	OMP
	FINISH & SPEC. NO.		CHECKED	FINAL APPROVAL
				PM-306

ISSUE ITEM CHANGED FROM DATE CN. NO. DRAFTS CHECKER ENG. APP.

TOLERANCES

SCALE

ALL OTHERS

DEC. DIM. ±
FRAC. DIM. ± 1/64
ANGULAR DIM. ±

DRILL, PUNCH, COMMERCIAL STOCK SIZES AND MANUFACTURERS TOLERANCES ARE NOT INCLUDED.