

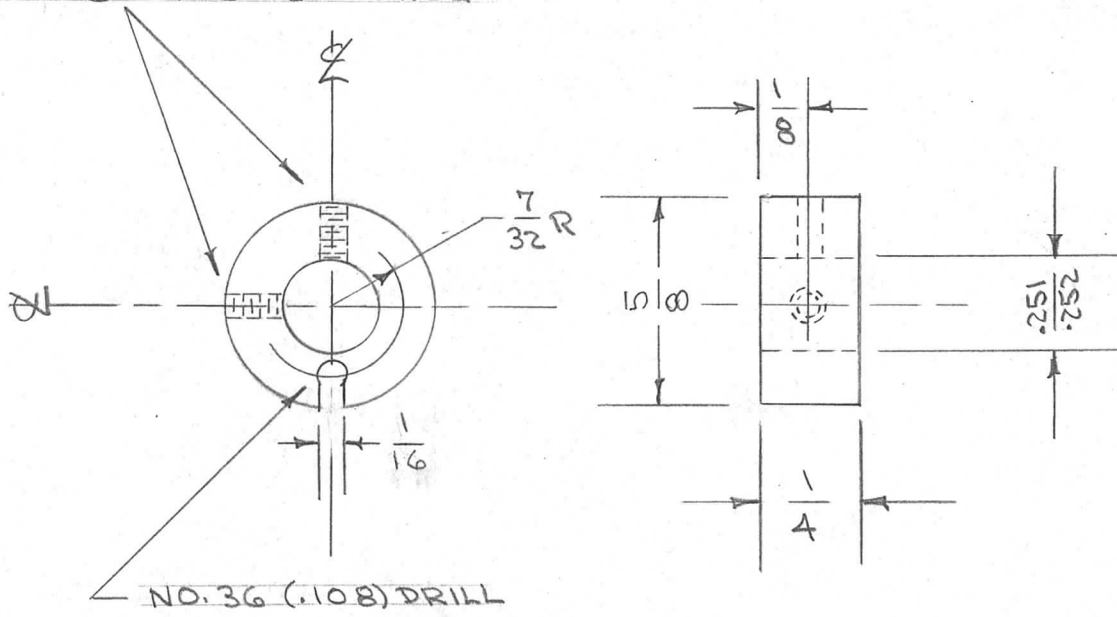
IF IT IS FOUND DESIRABLE TO CHANGE ANY TOLERANCE OR OTHER DETAIL SPECIFIED ON THIS DRAWING NOTIFY THE PURCHASER PROMPTLY.

PM-271 C

MAXIMUM ALLOWABLE TOLERANCES HAVE BEEN DETERMINED AND DEVIATIONS WILL BE CAUSE FOR REJECTION. REMOVE ALL BURRS AND SHARP EDGES

REQ. PER UNIT	USED ON			
	MODEL	PROJECT NO.	ASS'Y. NO.	DATE
2	TAC-1	132	A-721	12-23-53

DRILL & TAP 6-32 2REQ



REQ.	ITEM	PART NO.	DESCRIPTION	SYMBOL
		5/8 D.	THE TECHNICAL MATERIEL CORP. MAMARONECK. NEW YORK	
		STOCK SIZE		
		BRASS	COLLAR, GROUND STRAP	
		MATERIAL	TAC-1	
		WEIGHT PER PC.		
		FREE TURNING		
		TYPE & TEMPER		
		HEAT TREAT. SPEC.		
		FINISH & SPEC. NO.		

ISSUE	ITEM	CHANGED FROM	DATE	CN. NO.	DRAFTS	CHECKER	ENG. APP.
C	1	SLOT WAS 1/32	6/10/54	3	C.D.D.	WDE	WDE
B	1	SLOT MOYED	4/12/54	2	C.D.D.	WDE	WDE
A	1	DIM. CHANGED	3/10/54	1	C.D.D.	WDE	WDE

TOLERANCES		SCALE
ALL OTHERS	DEC. DIM. ± FRAC. DIM. ± ANGULAR DIM. ±	DRILL, PUNCH, COMMERCIAL STOCK SIZES AND MANUFACTURERS TOLERANCES ARE NOT INCLUDED.

CHECKED	FINAL APPROVAL
WDE	WDE

PM-271	C