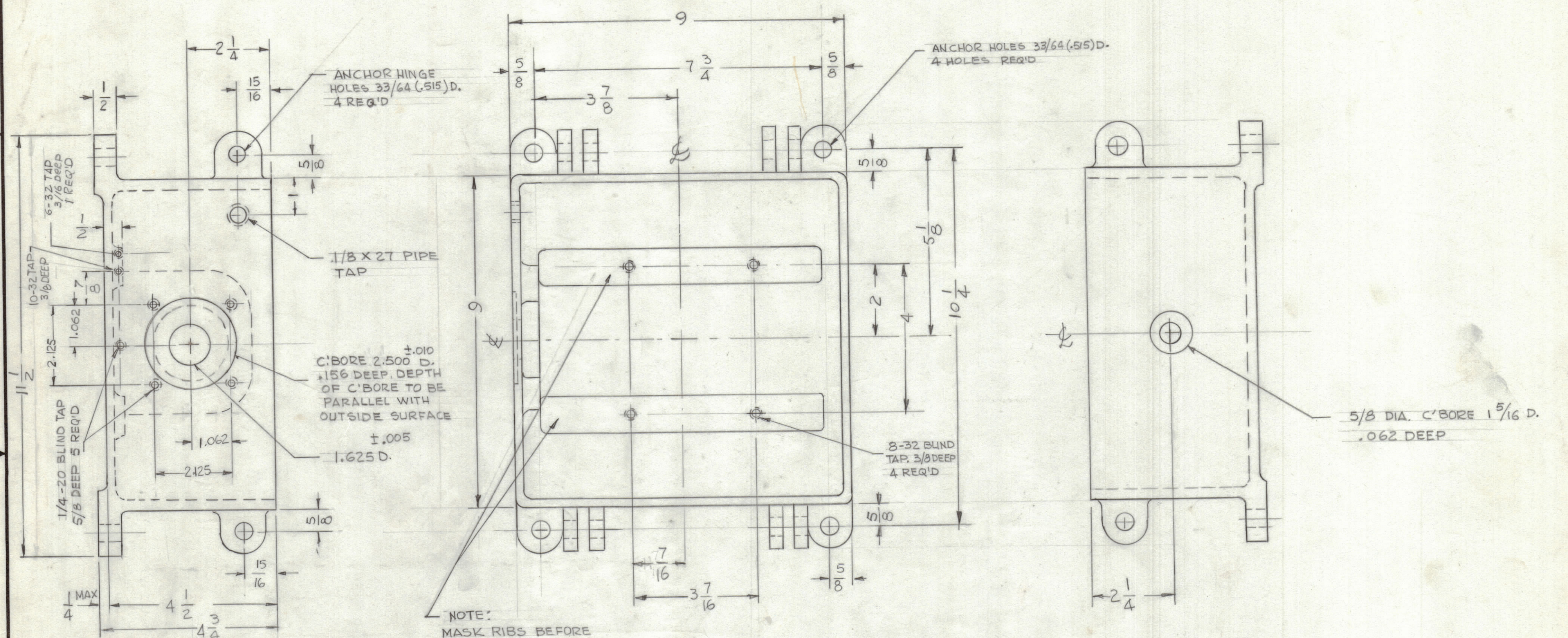


REVISIONS						
ZONE	LTR	DESCRIPTION	DATE	E.M.N.NO	DRAFT	CHKD APPD
		ORIGINAL RELEASE FOR PROD.				



REF: CASTING. CS 101

QTY. REQ.	ITEM	PART NO.	DESCRIPTION	SYMBOL
LIST OF MATERIAL				
THE TECHNICAL MATERIEL CORP. MAMARONECK, NEW YORK				
CASE, MACHINING				
MATERIAL ALUMINUM 356/T6			SIZE C	ISSUE
FINISH S114 ZINC CHROMATE PRIMER S115 SMOOTH GREY ENAMEL			CODE 82679	DWG NO. PM1619
			SCALE 1/2	SHEET OF

QTY / UNIT	RAC-46	ASS'Y NO.
APPLICATION		
CODE		

NOTICE TO PERSONS RECEIVING THIS DRAWING
 THE TECHNICAL MATERIEL CORPORATION claims proprietary right in the material disclosed hereon. This drawing is issued in confidence for engineering information only and may not be reproduced or used to manufacture anything shown hereon without permission from THE TECHNICAL MATERIEL CORPORATION to the user. This drawing is loaned for mutual assistance and is subject to recall at any time.