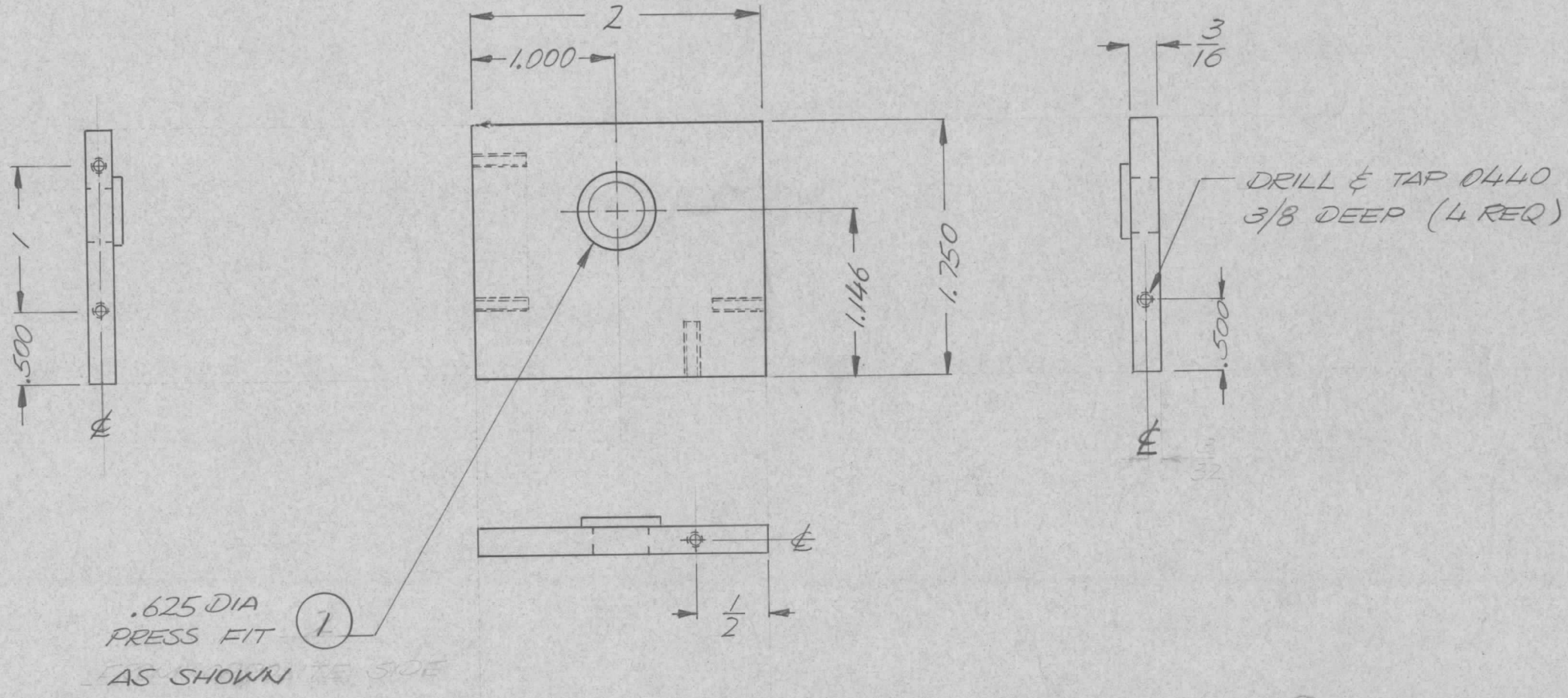


ENGINEERING SKETCH NOT FOR PRODUCTION

REVISIONS							
ZONE	LTR	DESCRIPTION	DATE	E.M.N.NO	DRAFT	CHKD	APPD
	Ø	ORIG. RELEASE FOR PROD.	9/9/71		RG		
	A	REV. BEARING INSERT	1/11/72	20447	GE	CF	CF
	B	TITLE CHG. WAS RIGHT SD.	4/3/73	20907	GE	CF	CF



1	1	BB126-5	BEARING	
REQ'D	ITEM	PART NUMBER	DESCRIPTION	SYM.
F. BUDETTI LIST OF MATERIAL				
FINAL APPROVAL		DATE	THE TECHNICAL MATERIEL CORP.	
MECH. DES.		DATE	MAMARONECK, NEW YORK	
ELECT. DES.		DATE	PLATE, GEAR, LEFT SIDE	
CHECKED		DATE	TUNE, CAP. ASSY.	
DRAWN		DATE	SIZE	CODE IDENT. NO.
			B	82679
			DWG NO.	PM1500
			ISSUE	B
			SCALE 1:1	SHEET OF

1	TLAA-1K	AX5132
QTY / UNIT	MODEL USED ON	ASS'Y NO.
APPLICATION		
CODE		

NOTICE TO PERSONS RECEIVING THIS DRAWING
 THE TECHNICAL MATERIEL CORPORATION claims proprietary right in the material disclosed hereon. This drawing is issued in confidence for engineering information only and may not be reproduced or used to manufacture anything shown hereon without permission from THE TECHNICAL MATERIEL CORPORATION to the user. This drawing is loaned for mutual assistance and is subject to recall at any time.

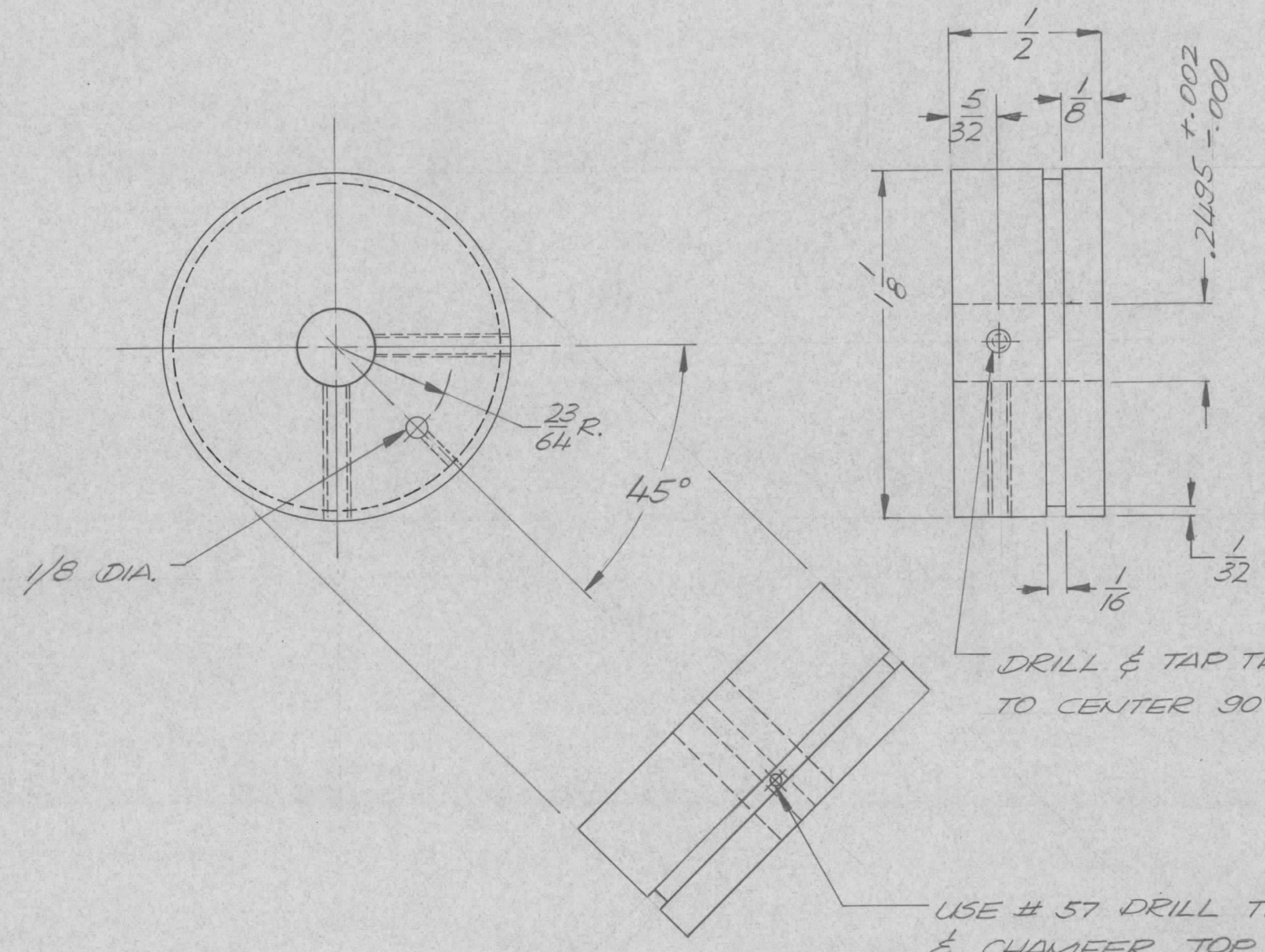
UNLESS OTHERWISE SPECIFIED DIMENSIONS ARE IN INCHES AND INCLUDE CHEMICALLY APPLIED OR PLATED FINISHES

DECIMALS	FRACTIONS
.X ± .05	1/64
.XX ± .01	TOLS. ANGLES
.XXX ± .005	0° -30'

MATERIAL 3/16 ALUM 2024-T3
 FINISH S404 YEL IRIDITE

ENGINEERING SKETCH NOT FOR PRODUCTION

REVISIONS							
ZONE	LTR	DESCRIPTION	DATE	E.M.N.NO	DRAFT	CHKD	APPD
	Ø	ORIG. RELEASE FOR PROD.	9/9/71		RG		
	A	ADD OBSOLETE NOTE	4/3/78	20907	GE	ej	ej



**OBSOLETE
SUPERSEDED
REPLACED BY
PM1518**

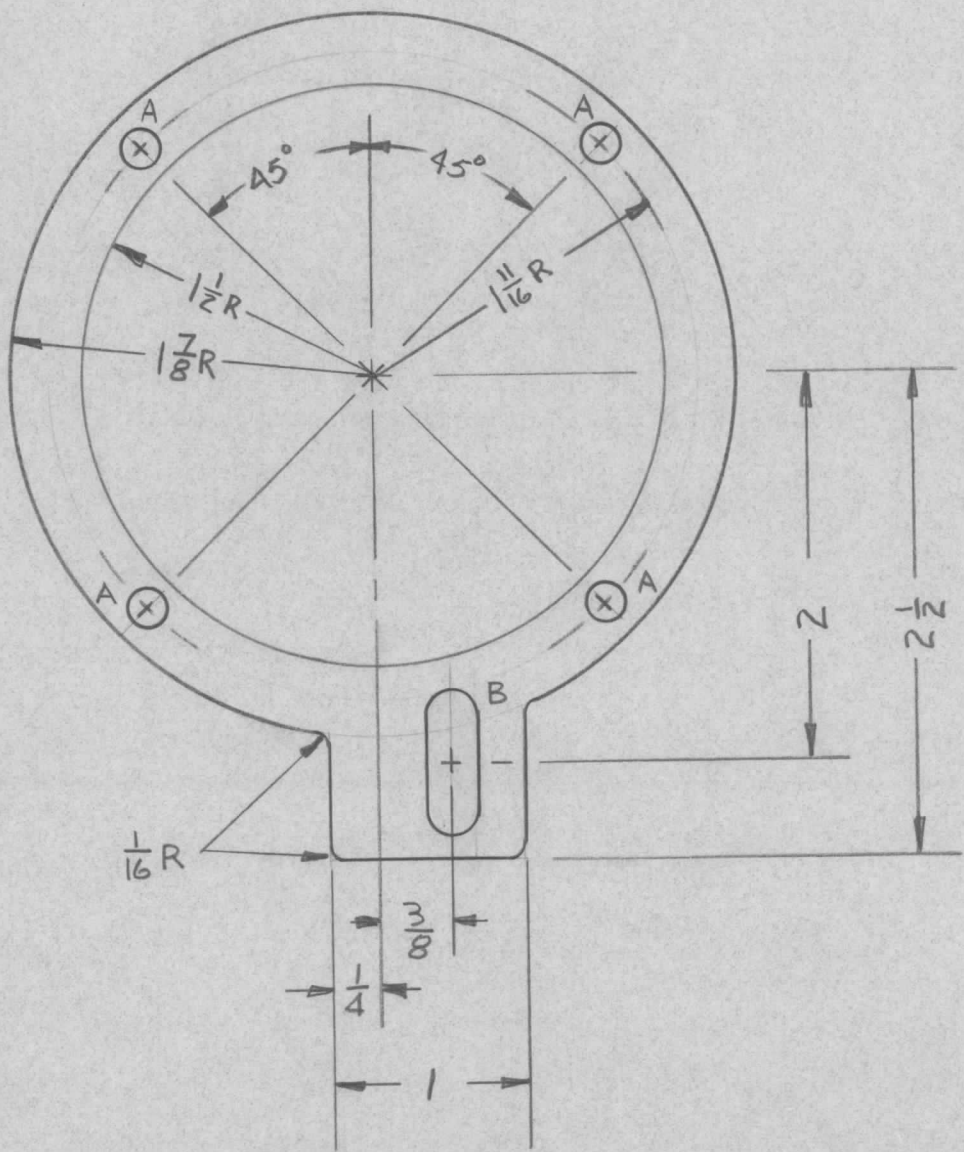
DRILL & TAP THRU FOR 0632 THD.
TO CENTER 90° APART AS SHOWN (2 REQ)

USE # 57 DRILL THRU TO 1/8 DIA. HOLE
& CHAMFER TOP EDGE OF HOLE

REQ'D	ITEM	PART NUMBER	DESCRIPTION	SYM.
			F. BUDETTI LIST OF MATERIAL	
UNLESS OTHERWISE SPECIFIED DIMENSIONS ARE IN INCHES AND INCLUDE CHEMICALLY APPLIED OR PLATED FINISHES		FINAL APPROVAL	DATE	THE TECHNICAL MATERIEL CORP. MAMARONECK, NEW YORK
DECIMALS		MECH. DES.	DATE	
FRACTIONS		ELECT. DES.	DATE	
TOLS.		CHECKED	DATE	
MATERIAL		DRAWN	DATE	PULLEY
FINISH				
QTY / UNIT	MODEL USED ON	ASS'Y NO.	DATE	
APPLICATION		CODE		SIZE
NOTICE TO PERSONS RECEIVING THIS DRAWING				CODE IDENT. NO.
THE TECHNICAL MATERIEL CORPORATION claims proprietary right in the material disclosed hereon. This drawing is issued in confidence for engineering information only and may not be reproduced or used to manufacture anything shown hereon without permission from THE TECHNICAL MATERIEL CORPORATION to the user. This drawing is loaned for mutual assistance and is subject to recall at any time.				DWG NO.
1 TLAA-1K AX5132		BRASS		ISSUE
		NATURAL		A
		SCALE 2:1		
		SHEET OF		

REVISIONS							
ZONE	LTR	DESCRIPTION	DATE	E.M.N.NO	DRAFT	CHKD	APPD
	Ø	ORIG RELEASE FOR PROD	7/9/70			CU	

SMOOTH ALL EDGES

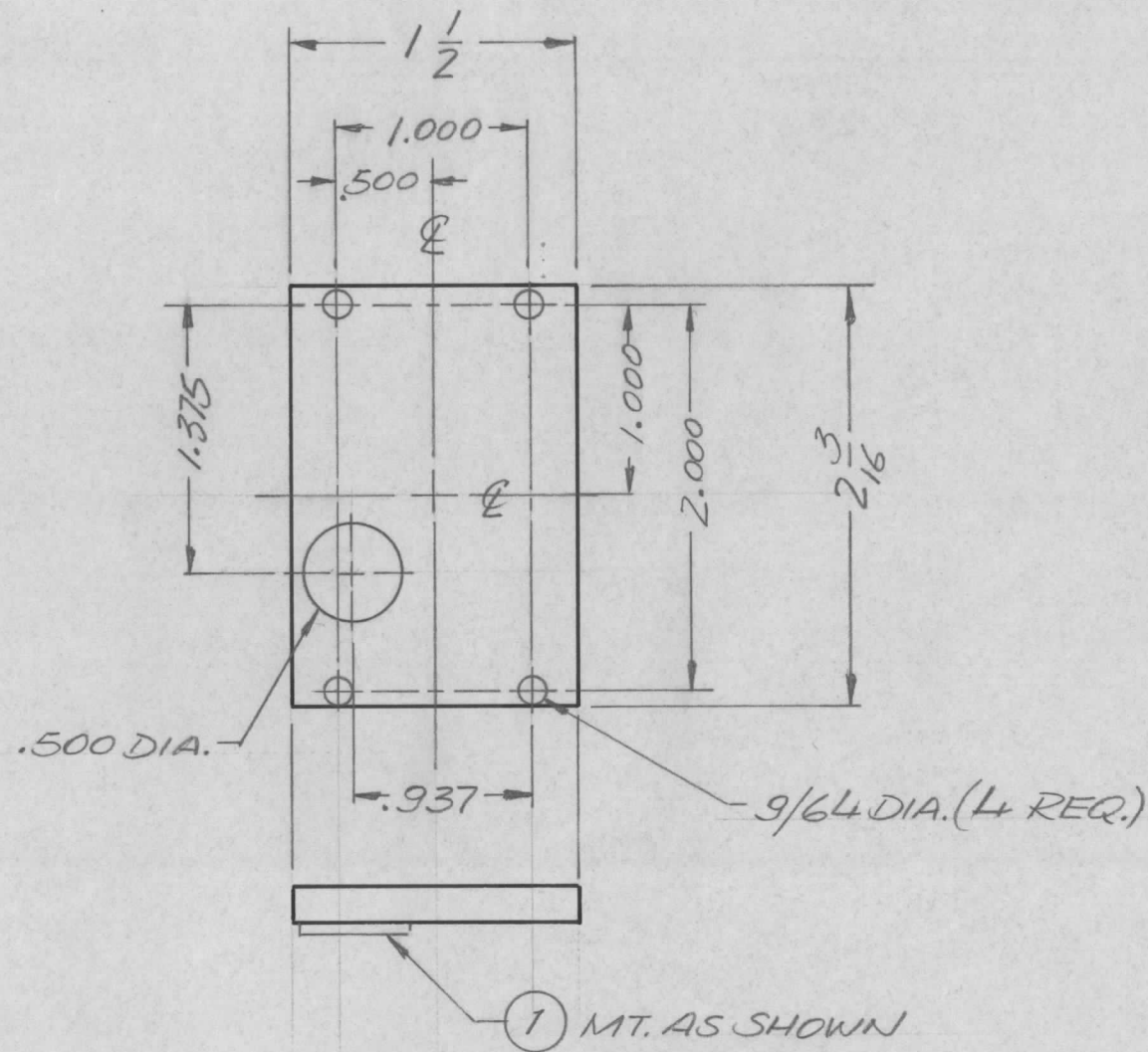


A ~ 3/16 DIA. 4 REQ'D
 B ~ 1/4 x 3/4 SLOT 1 REQ'D

REQ'D	ITEM	PART NUMBER	DESCRIPTION	SYM.
LIST OF MATERIAL				
THE TECHNICAL MATERIEL CORP. MAMARONECK, NEW YORK				
RING, FILAMENT				
SIZE	CODE IDENT. NO.	DWG NO.	ISSUE	
B	82679	PM1513	Ø	
SCALE			SHEET	OF
		1		

1	HFLM-10K	AX743-2	UNLESS OTHERWISE SPECIFIED DIMENSIONS ARE IN INCHES AND INCLUDE CHEMICALLY APPLIED OR PLATED FINISHES	FINAL APPROVAL	DATE
1	HFLA-10K	AX743-1		MECH. DES.	DATE
QTY / UNIT	MODEL USED ON	ASS'Y NO.	DECIMALS	FRACTIONS	ELECT. DES.
APPLICATION			.X ± .05	1/64	CHECKED
CODE			.XX ± .01	TOLS. ANGLES	DATE
NOTICE TO PERSONS RECEIVING THIS DRAWING			.XXX ± .005	0° .30'	DRAWN
THE TECHNICAL MATERIEL CORPORATION claims proprietary right in the material disclosed hereon. This drawing is issued in confidence for engineering information only and may not be reproduced or used to manufacture anything shown hereon without permission from THE TECHNICAL MATERIEL CORPORATION to the user. This drawing is loaned for mutual assistance and is subject to recall at any time.			MATERIAL 1/8 ALUM		DATE
			5052-H32		7/1 Jan 72
			FINISH		
			S404 YEL IRID		

REVISIONS							
E.M.N. NO.	DRAFT	CHKD	ZONE	LTR	DESCRIPTION	DATE	APPROVED
	DV			Ø	ORIGINAL RELEASE FOR PRODUCTION	11/30/73	



1	1	BB126-4	BEARING PRESS FIT	
REQ'D	ITEM	PART NUMBER	DESCRIPTION	SYM.

F.B. LIST OF MATERIAL

FINAL APPROVAL <i>FB</i>	DATE 11/14/73	THE TECHNICAL MATERIEL CORP. MAMARONECK, NEW YORK PLATE, BEARING, TOP			
MECH. DES.	DATE				
ELECT. DES.	DATE				
CHECKED <i>FB</i>	DATE 11-1-73				
DRAWN <i>GE</i>	DATE 3-5-73	SIZE B	CODE IDENT. NO. 82679	DWG NO. PM1523	ISSUE Ø
SCALE 1:1		SHEET		OF	

1	AX5176	AX5179
QTY / UNIT	MODEL USED ON	ASS'Y NO.
APPLICATION		
CODE		

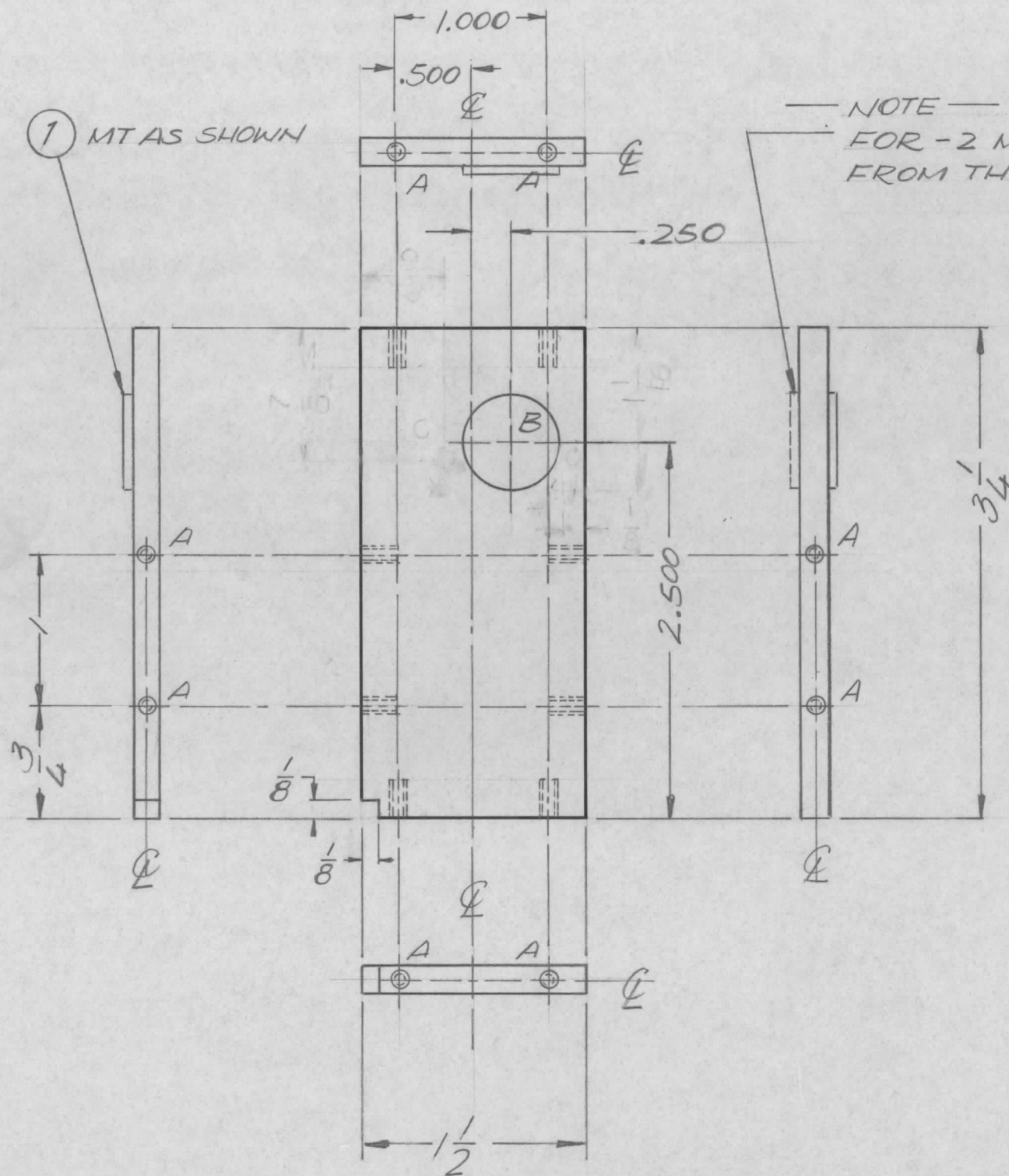
NOTICE TO PERSONS RECEIVING THIS DRAWING
 THE TECHNICAL MATERIEL CORPORATION claims proprietary right in the material disclosed hereon. This drawing is issued in confidence for engineering information only and may not be reproduced or used to manufacture anything shown hereon without permission from THE TECHNICAL MATERIEL CORPORATION to the user. This drawing is loaned for mutual assistance and is subject to recall at any time.

UNLESS OTHERWISE SPECIFIED DIMENSIONS ARE IN INCHES AND INCLUDE CHEMICALLY APPLIED OR PLATED FINISHES

DECIMALS	FRACTIONS
.X ± .05	1/64
.XX ± .01	TOLS. ANGLES
.XXX ± .005	0° - 30'

MATERIAL 3/16
 ALUM. 5052H32
 FINISH 5404
 YEL. IRIDITE

REVISIONS							
E.M.N. NO.	DRAFT	CHKD	ZONE	LTR	DESCRIPTION	DATE	APPROVED
	DV			Ø	ORIGINAL RELEASE FOR PRODUCTION	11/30/73	



NOTE
FOR -2 MOUNT BEARING
FROM THIS SIDE

HOLE DESCRIPTION REQ.
 A - DRILL & TAP FOR 0440 SC x 1/4 DEEP - 8 REQ.
 B - .625 DIA - 1 REQ.
 C - DRILL & TAP FOR 0632 THRU - 2 REQ.

* NOTE:
2 CHANGES TO BE DRILLED & TAPED ONLY
FOR PM1524-2

2	1	BB126-5	BEARING PRESS FIT	B
REQ'D	ITEM	PART NUMBER	DESCRIPTION	SYM.

F.B.				LIST OF MATERIAL	
UNLESS OTHERWISE SPECIFIED DIMENSIONS ARE IN INCHES AND INCLUDE CHEMICALLY APPLIED OR PLATED FINISHES		FINAL APPROVAL	DATE	THE TECHNICAL MATERIEL CORP.	
		MECH. DES.	DATE	MAMARONECK, NEW YORK	
DECIMALS .X ± .05 FRACTIONS 1/64		ELECT. DES.	DATE	PLATE, BEARING, SIDE	
.XX ± .01 TOLS. ANGLES		CHECKED	DATE		
.XXX ± .005 0° - 30'		DRAWN	DATE		
MATERIAL 5052 H32 3/16 ALUM				SIZE	CODE IDENT. NO.
FINISH 5404 YEL ID.				B	82679
				DWG NO.	PM1524
				ISSUE	Ø

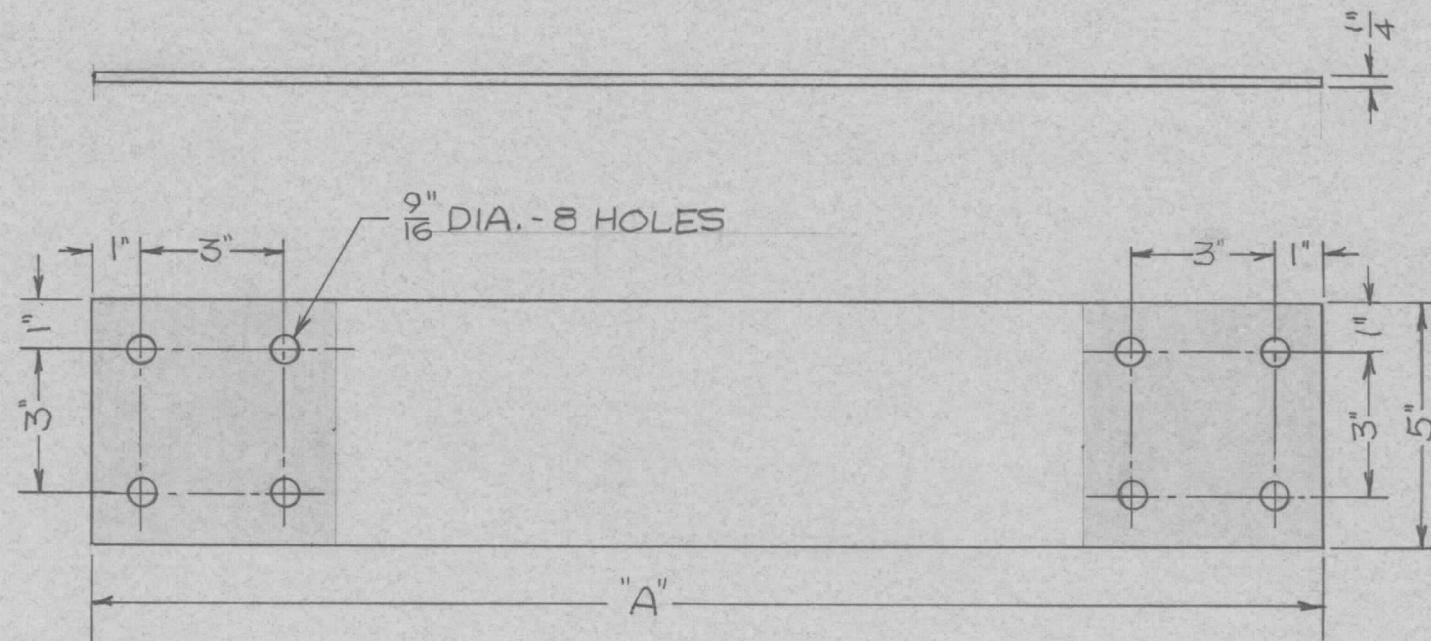
2	AX5176	AX5179
QTY / UNIT	MODEL USED ON	ASS'Y NO.
APPLICATION		
CODE		

NOTICE TO PERSONS RECEIVING THIS DRAWING
 THE TECHNICAL MATERIEL CORPORATION claims proprietary right in the material disclosed hereon. This drawing is issued in confidence for engineering information only and may not be reproduced or used to manufacture anything shown hereon without permission from THE TECHNICAL MATERIEL CORPORATION to the user. This drawing is loaned for mutual assistance and is subject to recall at any time.

SCALE 1:1	SHEET	OF
-----------	-------	----

PART NO.	"A"	REQD
PM1525-1	58 ¹ / ₈ "	2
-2	48 ⁷ / ₈ "	2
-3	41 ⁷ / ₈ "	2

REVISIONS				
LTR	DESCRIPTION	DATE	DRAFT	CHECKED



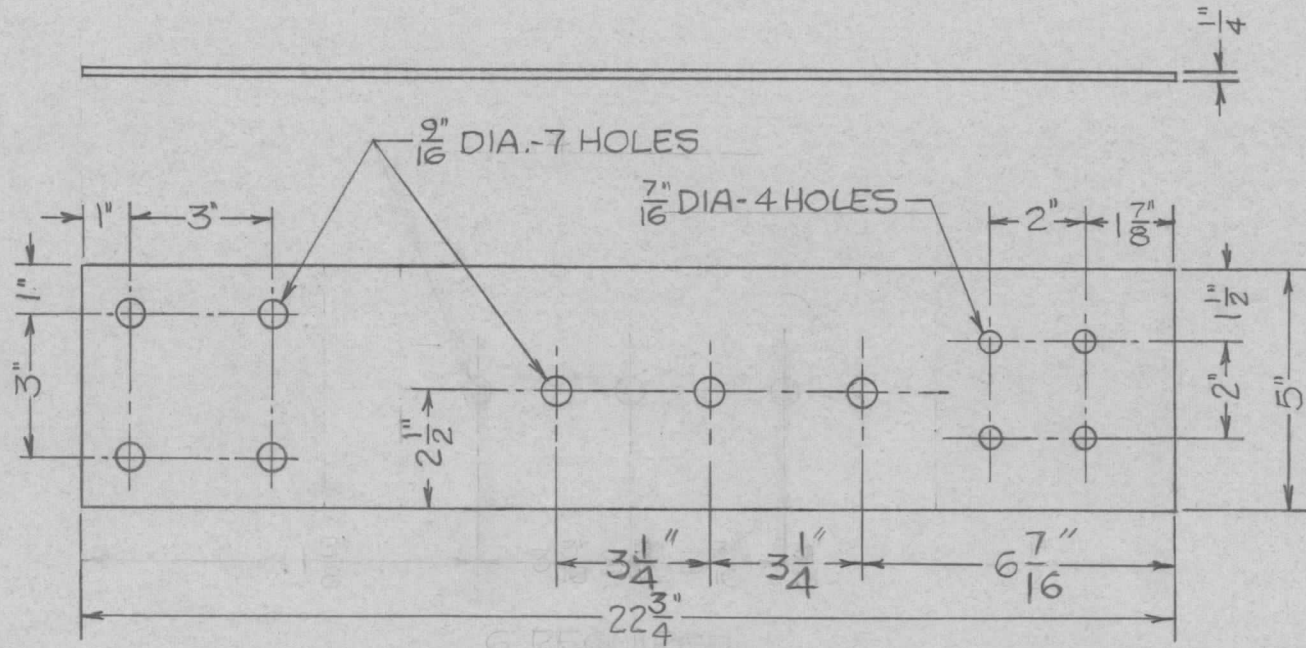
- NOTE:**
- SILVER PLATE .0003 AT ALL CONNECTION POINTS (SHADED AREAS)
 - STAMP PART NUMBERS

QTY REQ	ITEM	PART NO.	MANUFACTURER	DESCRIPTION	SYM
				PARTS LIST	
				UNLESS OTHERWISE SPECIFIED DIMENSIONS ARE IN INCHES AND INCLUDE CHEMICALLY APPLIED OR PLATED FINISHES REMOVE ALL BURRS AND SHARP EDGES.	
				TOLERANCES ON FRACTIONS ANGLES DECIMALS $\pm 1/32"$	
				MATERIAL 6101-T61 ALUM.	
				FINISH SEE NOTE	
		PM1527		THE TMC SYSTEMS AND POWER CORPORATION SPRINGFIELD, VIRGINIA	
		NEXT ASSY	USED ON	BUS BAR DETAILS	
		APPLICATION		SIZE B	
				CODE IDENT NO. 24146	
				DWG. NO. PM1525	
				SCALE 1/4	
				SHEET 1 OF 1	

NOTICE TO PERSONS RECEIVING THIS DRAWING
THE TMC SYSTEMS AND POWER CORPORATION claims proprietary right in the material disclosed hereon. This drawing is issued in confidence for engineering information only and may not be reproduced or used to manufacture anything shown hereon without permission from THE TMC SYSTEMS AND POWER CORPORATION to the user. This drawing is loaned for mutual assistance and is subject to recall at any time.

REVISIONS

LTR	DESCRIPTION	DATE	DRAFT	CHECKED	APPD
-----	-------------	------	-------	---------	------



NOTE:

1. SILVER PLATE .0003 AT ALL CONNECTION POINTS
2. STAMP PMI526

6 REQUIRED

QTY REQ	ITEM	PART NO.	MANUFACTURER	DESCRIPTION	SYM
---------	------	----------	--------------	-------------	-----

PARTS LIST

UNLESS OTHERWISE SPECIFIED DIMENSIONS ARE IN INCHES AND INCLUDE CHEMICALLY APPLIED OR PLATED FINISHES REMOVE ALL BURRS AND SHARP EDGES.			DRAWN FERNANDEZ	DATE 5/11/73	THE TMC SYSTEMS AND POWER CORPORATION SPRINGFIELD, VIRGINIA
			CHECKED <i>[Signature]</i>	DATE 5/21/73	
			D. ENG. <i>[Signature]</i>	DATE 5-22-73	
			P. ENG. <i>[Signature]</i>	DATE 22 MAY 73	
			P. MGR.	DATE	
			CHIEF, ENG. DEPT.	DATE 22 MAY 73	
TOLERANCES ON FRACTIONS ANGLES DECIMALS ±1/32"			BUS BAR DETAILS		

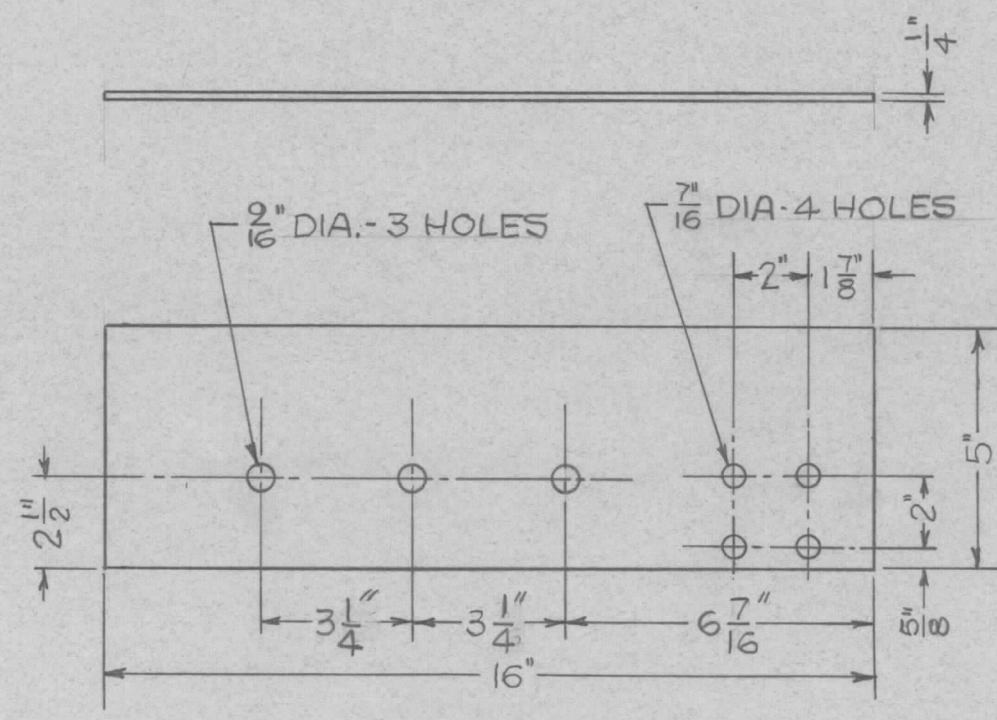
MATERIAL 6101-T61 ALUM.	SIZE B	CODE IDENT NO. 24146	DWG. NO. PM1526	REV
----------------------------	-----------	-------------------------	--------------------	-----

	PM1527
NEXT ASSY	USED ON
APPLICATION	SEE NOTE

NOTICE TO PERSONS RECEIVING THIS DRAWING

THE TMC SYSTEMS AND POWER CORPORATION claims proprietary right in the material disclosed hereon. This drawing is issued in confidence for engineering information only and may not be reproduced or used to manufacture anything shown hereon without permission from THE TMC SYSTEMS AND POWER CORPORATION to the user. This drawing is loaned for mutual assistance and is subject to recall at any time.

REVISIONS					
LTR	DESCRIPTION	DATE	DRAFT	CHECKED	APPD



NOTE:
 1. SILVER PLATE .0003
 2. STAMP PM1528

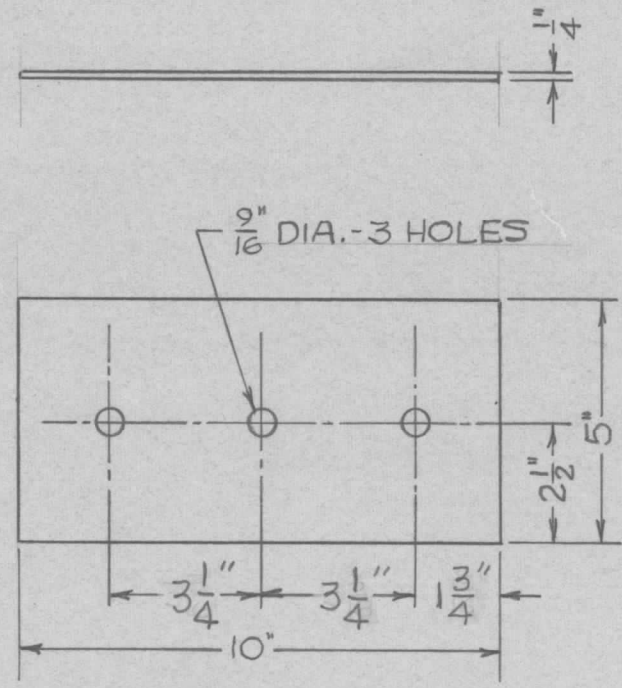
6 REQUIRED

QTY REQ	ITEM	PART NO.	MANUFACTURER	DESCRIPTION	SYM
PARTS LIST					
				THE TMC SYSTEMS AND POWER CORPORATION SPRINGFIELD, VIRGINIA	
				BUS BAR DETAIL	
				SIZE	CODE IDENT NO.
				B	24146
				DWG. NO.	PM1528
				SCALE	1/4
				SHEET	1 OF 1

				UNLESS OTHERWISE SPECIFIED DIMENSIONS ARE IN INCHES AND INCLUDE CHEMICALLY APPLIED OR PLATED FINISHES REMOVE ALL BURRS AND SHARP EDGES.
				TOLERANCES ON FRACTIONS ANGLES DECIMALS ± 1/32"
				MATERIAL 6101-T61 ALUM
				FINISH SEE NOTE
				APPLICATION
				NEXT ASSY USED ON
				PM1527

NOTICE TO PERSONS RECEIVING THIS DRAWING
 THE TMC SYSTEMS AND POWER CORPORATION claims proprietary right in the material disclosed hereon. This drawing is issued in confidence for engineering information only and may not be reproduced or used to manufacture anything shown hereon without permission from THE TMC SYSTEMS AND POWER CORPORATION to the user. This drawing is loaned for mutual assistance and is subject to recall at any time.

REVISIONS					
LTR	DESCRIPTION	DATE	DRAFT	CHECKED	APPD



NOTES:

1. SILVER PLATE .0003
2. STAMP PM1529

3 REQUIRED

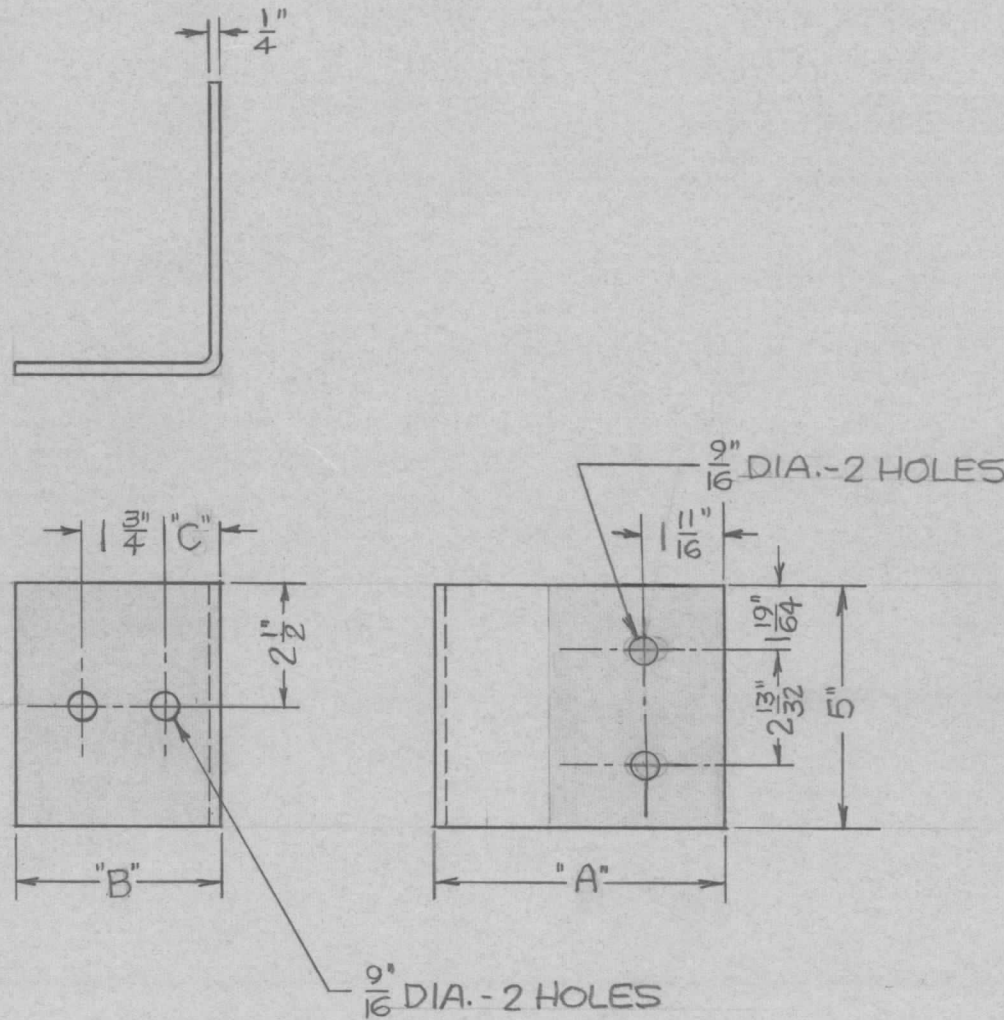
QTY REQ	ITEM	PART NO.	MANUFACTURER	DESCRIPTION	SYM
PARTS LIST					
			UNLESS OTHERWISE SPECIFIED DIMENSIONS ARE IN INCHES AND INCLUDE CHEMICALLY APPLIED OR PLATED FINISHES REMOVE ALL BURRS AND SHARP EDGES.	DRAWN FERNANDEZ DATE 5/18/73 CHECKED <i>WJ</i> DATE 5/21/73 D. ENG. <i>JA</i> DATE 5-22-73 P. ENG. <i>CRB</i> DATE 22 MAY 73 P. MGR. DATE CHIEF, ENG. DEPT. <i>R. Curran</i> DATE 22 MAY 73	THE TMC SYSTEMS AND POWER CORPORATION SPRINGFIELD, VIRGINIA BUS BAR SPACER
		PM1527	MATERIAL 6101-T6 ALUM.	SIZE B	CODE IDENT NO. 24146
	NEXT ASSY	USED ON	FINISH SEE NOTE	DWG. NO. PM1529	REV
APPLICATION				SCALE 1/4"	SHEET 1 OF 1

NOTICE TO PERSONS RECEIVING THIS DRAWING

THE TMC SYSTEMS AND POWER CORPORATION claims proprietary right in the material disclosed hereon. This drawing is issued in confidence for engineering information only and may not be reproduced or used to manufacture anything shown hereon without permission from THE TMC SYSTEMS AND POWER CORPORATION to the user. This drawing is loaned for mutual assistance and is subject to recall at any time.

PART NO.	A	B	C	REQD.
PM1530-1	4"	3 $\frac{7}{8}$ "	1 $\frac{3}{8}$ "	3
-2	4 $\frac{3}{4}$ "	6"	1 $\frac{1}{2}$ "	3
-3	7 $\frac{3}{4}$ "	3 $\frac{7}{8}$ "	1 $\frac{1}{4}$ "	3
-4	8 $\frac{1}{2}$ "	6"	1 $\frac{1}{8}$ "	3

REVISIONS					
LTR	DESCRIPTION	DATE	DRAFT	CHECKED	APPD



NOTES:

- SILVER PLATE .0003 AT ALL CONNECTION POINTS (SHADED AREAS)
- STAMP PART NUMBERS

QTY REQ	ITEM	PART NO.	MANUFACTURER	DESCRIPTION	SYM
---------	------	----------	--------------	-------------	-----

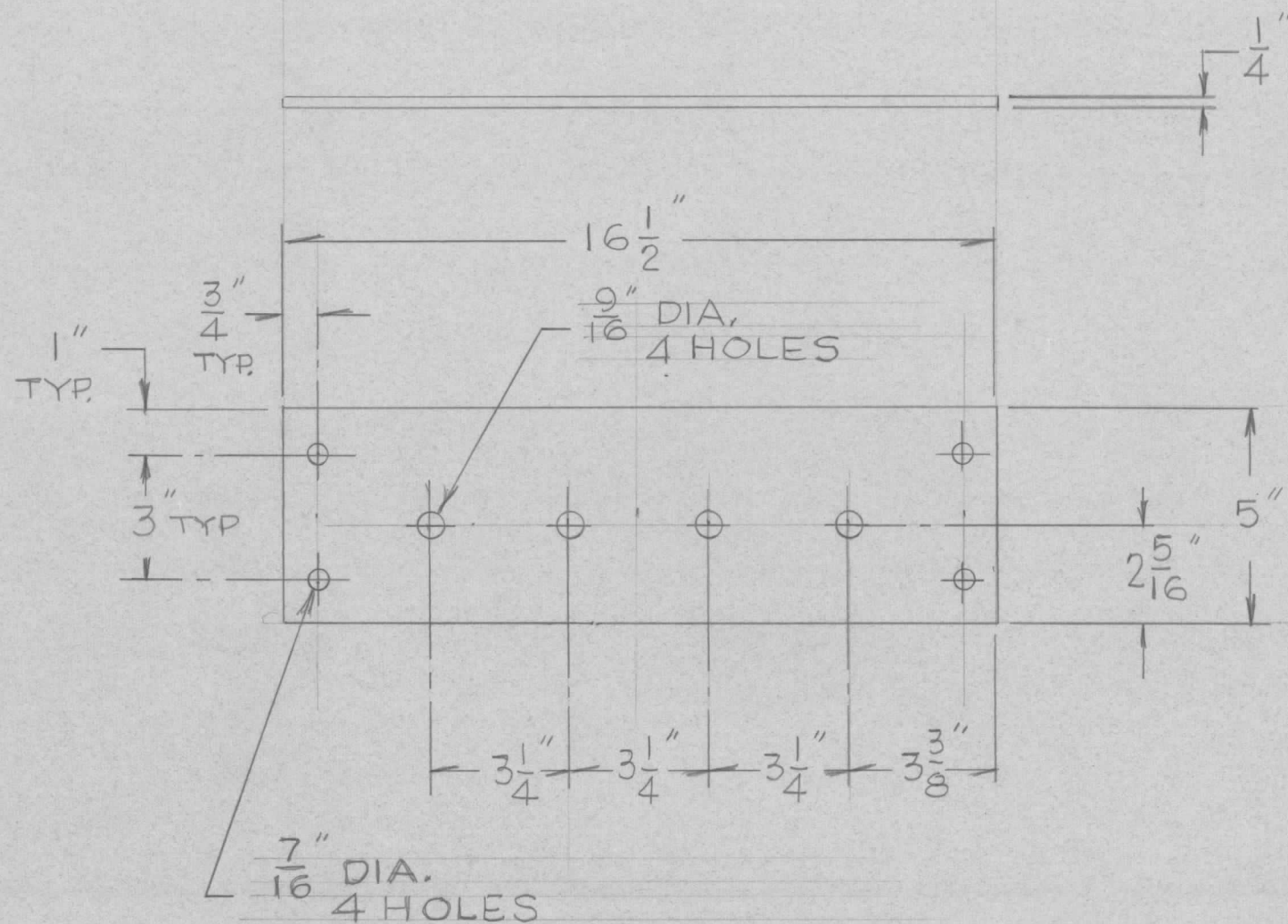
PARTS LIST

UNLESS OTHERWISE SPECIFIED DIMENSIONS ARE IN INCHES AND INCLUDE CHEMICALLY APPLIED OR PLATED FINISHES REMOVE ALL BURRS AND SHARP EDGES.		DRAWN FERNANDEZ	DATE 5/18/73	THE TMC SYSTEMS AND POWER CORPORATION SPRINGFIELD, VIRGINIA	
TOLERANCES ON FRACTIONS ANGLES DECIMALS ± 1/32"		CHECKED <i>EA</i>	DATE 5/21/73		
MATERIAL 6101-T61 ALUM		D. ENG. <i>EA</i>	DATE 5-22-73	BUS BAR DETAILS	
		P. ENG. <i>ERB</i>	DATE 22 MAY 73		
NEXT ASSY		P. MGR.	DATE	SIZE B	CODE IDENT NO. 24146
APPLICATION		CHIEF, ENG. DEPT. <i>R. ...</i>	DATE 22 MAY 73	DWG. NO. PM1530	REV
SEE NOTE		SCALE 1/4		SHEET 1 OF 1	

NOTICE TO PERSONS RECEIVING THIS DRAWING

THE TMC SYSTEMS AND POWER CORPORATION claims proprietary right in the material disclosed hereon. This drawing is issued in confidence for engineering information only and may not be reproduced or used to manufacture anything shown hereon without permission from THE TMC SYSTEMS AND POWER CORPORATION to the user. This drawing is loaned for mutual assistance and is subject to recall at any time.

REVISIONS					
LTR	DESCRIPTION	DATE	DRAFT	CHECKED	APPD



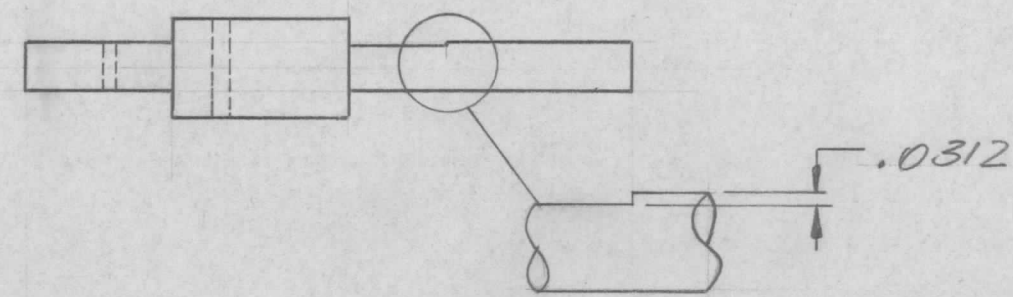
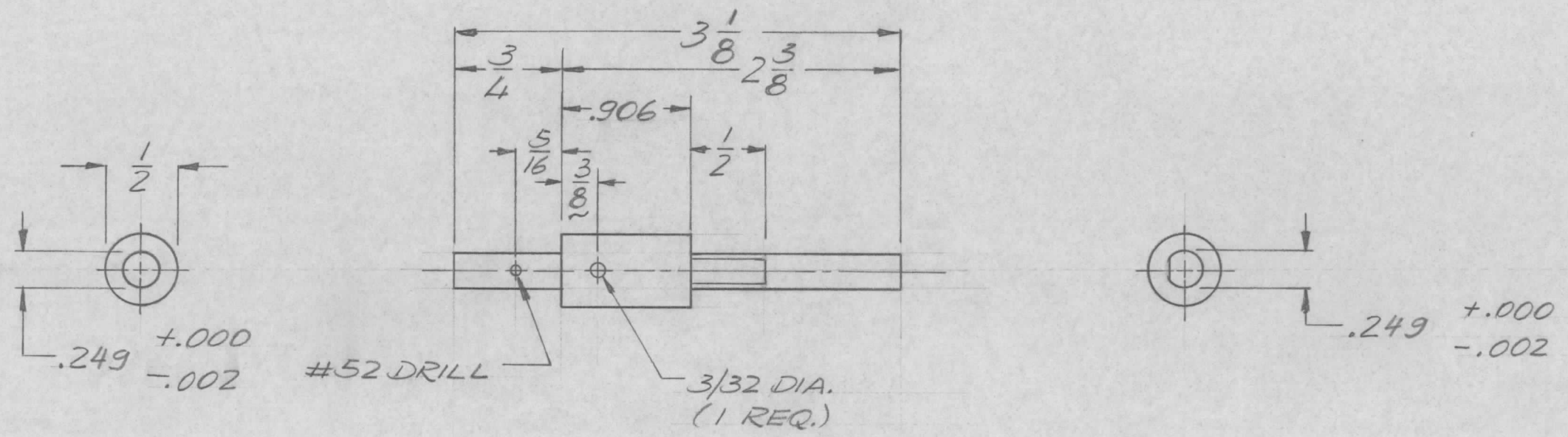
NOTES:
 1. SILVER PLATE .0003 MIN.
 2. STAMP PM1531

2 REQUIRED

QTY REQ	ITEM	PART NO.	MANUFACTURER	DESCRIPTION	SYM
PARTS LIST					
			UNLESS OTHERWISE SPECIFIED DIMENSIONS ARE IN INCHES AND INCLUDE CHEMICALLY APPLIED OR PLATED FINISHES REMOVE ALL BURRS AND SHARP EDGES.	DRAWN FRAMPTON CHECKED <i>SA</i> D. ENG. <i>SA</i> P. ENG. <i>CRB</i> P. MGR. CHIEF, ENG. DEPT. <i>R. ...</i>	DATE 5-22-73 DATE 5-22-73 DATE 5-22-73 DATE 22 MAY 73 DATE
			TOLERANCES ON FRACTIONS ANGLES DECIMALS ± 1/32	THE TMC SYSTEMS AND POWER CORPORATION SPRINGFIELD, VIRGINIA	
			MATERIAL 6101-T61 ALUM.	NEUTRAL BUS BAR	
			FINISH AS NOTED	SIZE B CODE IDENT NO. 24146 SCALE 1/4	DWG. NO. PM1531 REV
			APPLICATION	SHEET 1 OF 1	

NOTICE TO PERSONS RECEIVING THIS DRAWING
 THE TMC SYSTEMS AND POWER CORPORATION claims proprietary right in the material disclosed hereon. This drawing is issued in confidence for engineering information only and may not be reproduced or used to manufacture anything shown hereon without permission from THE TMC SYSTEMS AND POWER CORPORATION to the user. This drawing is loaned for mutual assistance and is subject to recall at any time.

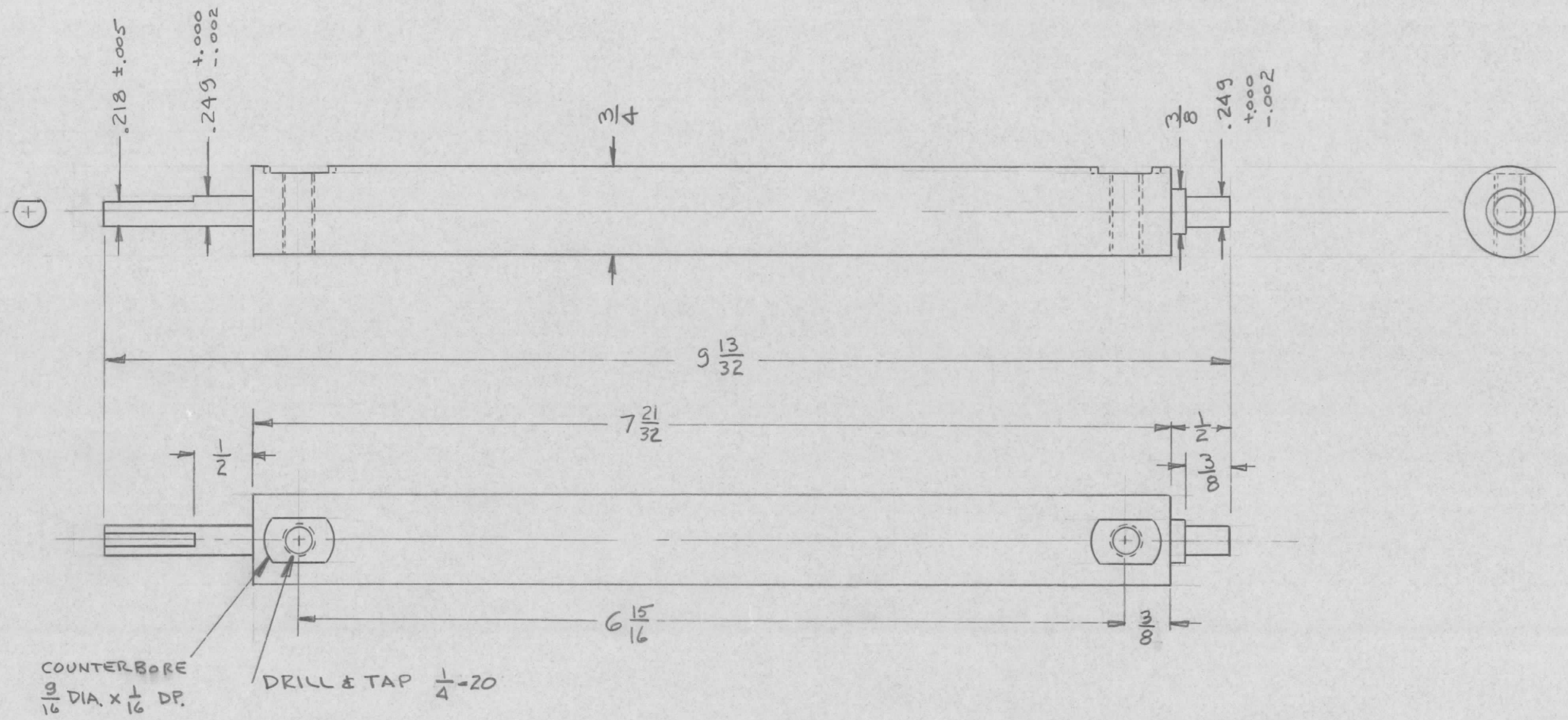
REVISIONS							
E.M.N. NO.	DRAFT	CHKD	ZONE	LTR	DESCRIPTION	DATE	APPROVED
	DV			Ø	ORIGINAL RELEASE FOR PRODUCTION	11/30/73	



FLAT DETAIL

REQ'D	ITEM	PART NUMBER	DESCRIPTION	SYM.
	F.B.		LIST OF MATERIAL	
<p>UNLESS OTHERWISE SPECIFIED DIMENSIONS ARE IN INCHES AND INCLUDE CHEMICALLY APPLIED OR PLATED FINISHES</p>				
<p>DECIMALS .X ± .05 .XX ± .01 .XXX ± .005</p>		<p>FRACTIONS 1/64 ANGLES 0° .30'</p>		<p>FINAL APPROVAL <i>FB</i> DATE 11/4/73</p>
<p>QTY / UNIT</p>		<p>MODEL USED ON</p>		<p>MECH. DES. DATE</p>
<p>AX5176</p>		<p>AX5179</p>		<p>ELECT. DES. DATE</p>
<p>APPLICATION</p>				<p>CHECKED <i>JE</i> DATE 11-6-73</p>
<p>CODE</p>				<p>DRAWN <i>GE</i> DATE 3/9/73</p>
<p>THE TECHNICAL MATERIEL CORP. MAMARONECK, NEW YORK</p>				
<p>SHAFT, CAP PULLEY</p>				
<p>NOTICE TO PERSONS RECEIVING THIS DRAWING THE TECHNICAL MATERIEL CORPORATION claims proprietary right in the material disclosed hereon. This drawing is issued in confidence for engineering information only and may not be reproduced or used to manufacture anything shown hereon without permission from THE TECHNICAL MATERIEL CORPORATION to the user. This drawing is loaned for mutual assistance and is subject to recall at any time.</p>		<p>MATERIAL S. STEEL</p>		<p>SIZE B</p>
<p>FINISH</p>		<p>CODE IDENT. NO. 82679</p>		<p>DWG NO. PM1555</p>
<p>SCALE</p>			<p>SHEET OF</p>	

REVISIONS							
E.M.N. NO.	DRAFT	CHKD	ZONE	LTR	DESCRIPTION	DATE	APPROVED
	1 DV			Ø	ORIGINAL RELEASE FOR PRODUCTION	11/30/73	



REQ'D	ITEM	PART NUMBER	DESCRIPTION	SYM.
-------	------	-------------	-------------	------

LIST OF MATERIAL

THE TECHNICAL MATERIEL CORP.
MAMARONECK, NEW YORK

SHAFT, MAIN

QTY / UNIT	MODEL USED ON	ASS'Y NO.
1	AX5176	AX5178

UNLESS OTHERWISE SPECIFIED DIMENSIONS ARE IN INCHES AND INCLUDE CHEMICALLY APPLIED OR PLATED FINISHES

DECIMALS	FRACTIONS	TOLS.	ANGLES
.X ± .05	1/64		
.XX ± .01			0° -30'
.XXX ± .005			

MATERIAL 3/4" ALUM ROD
2024-T3

FINISH

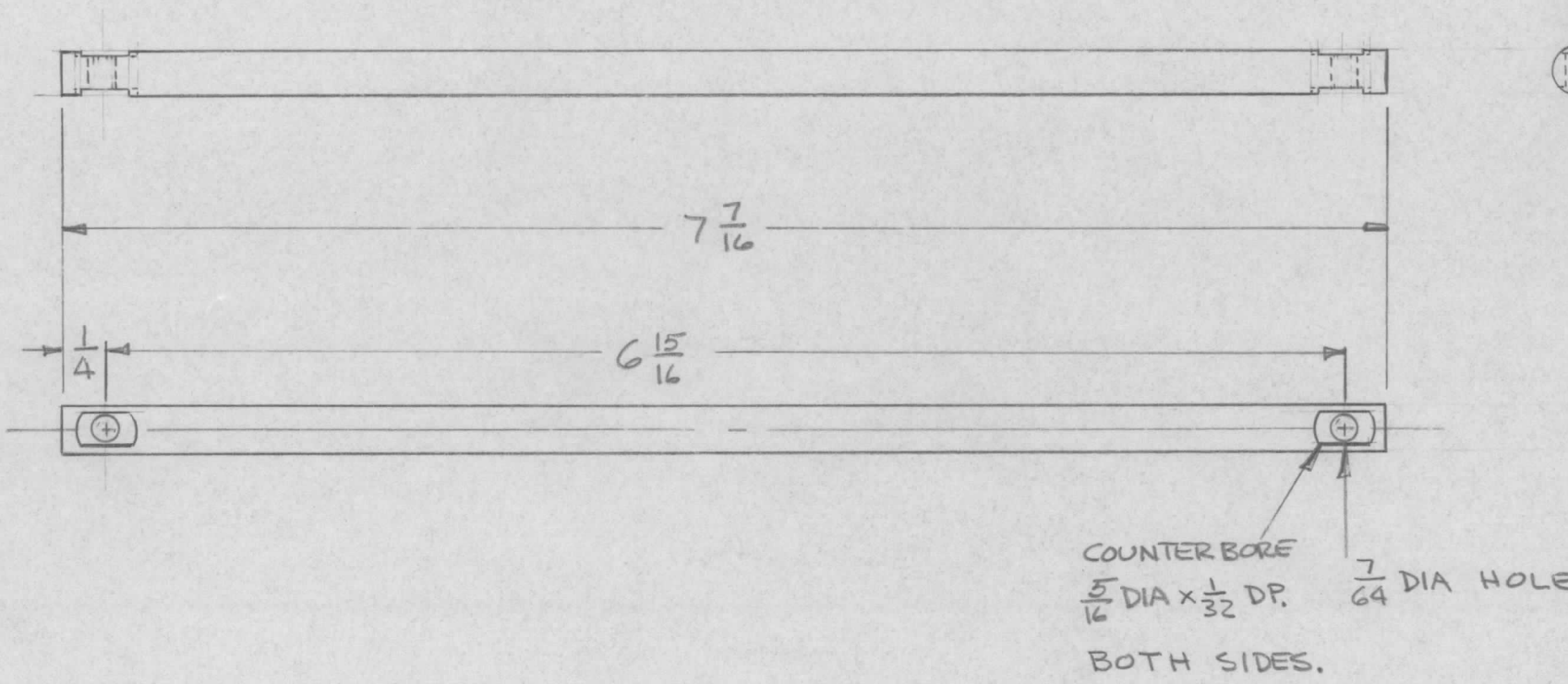
FINAL APPROVAL	DATE
MECH. DES.	DATE
ELECT. DES.	DATE
CHECKED	DATE
DRAWN	DATE

SIZE	CODE IDENT. NO.	DWG NO.	ISSUE
B	82679	PM 1558	Ø

NOTICE TO PERSONS RECEIVING THIS DRAWING
THE TECHNICAL MATERIEL CORPORATION claims proprietary right in the material disclosed hereon. This drawing is issued in confidence for engineering information only and may not be reproduced or used to manufacture anything shown hereon without permission from THE TECHNICAL MATERIEL CORPORATION to the user. This drawing is loaned for mutual assistance and is subject to recall at any time.

SCALE	SHEET	OF

REVISIONS							
E.M.N. NO.	DRAFT	CHKD	ZONE	LTR	DESCRIPTION	DATE	APPROVED
	DV			Ø	ORIGINAL RELEASE FOR PRODUCTION	11/30/73	

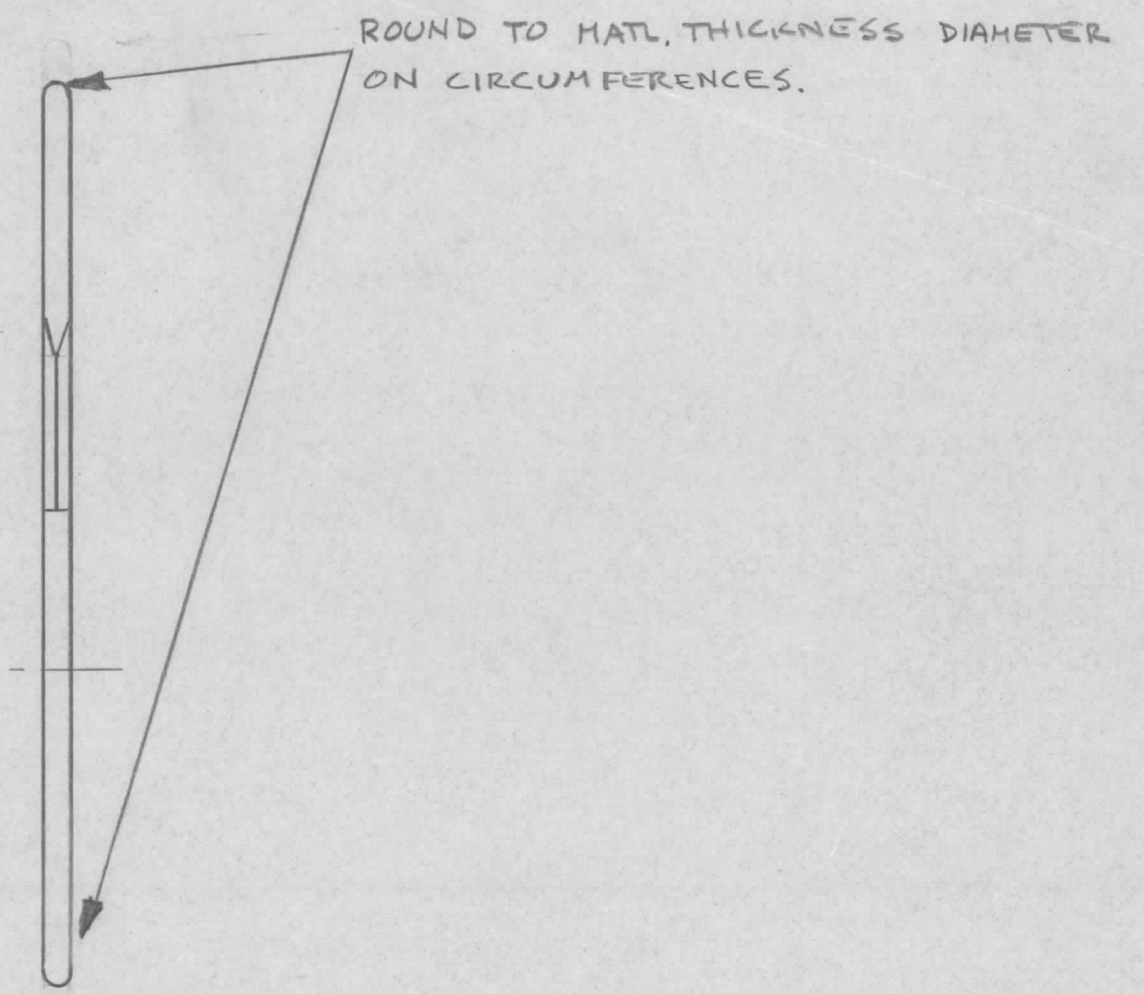
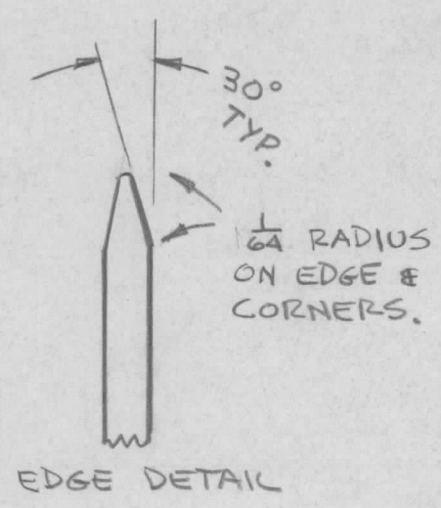
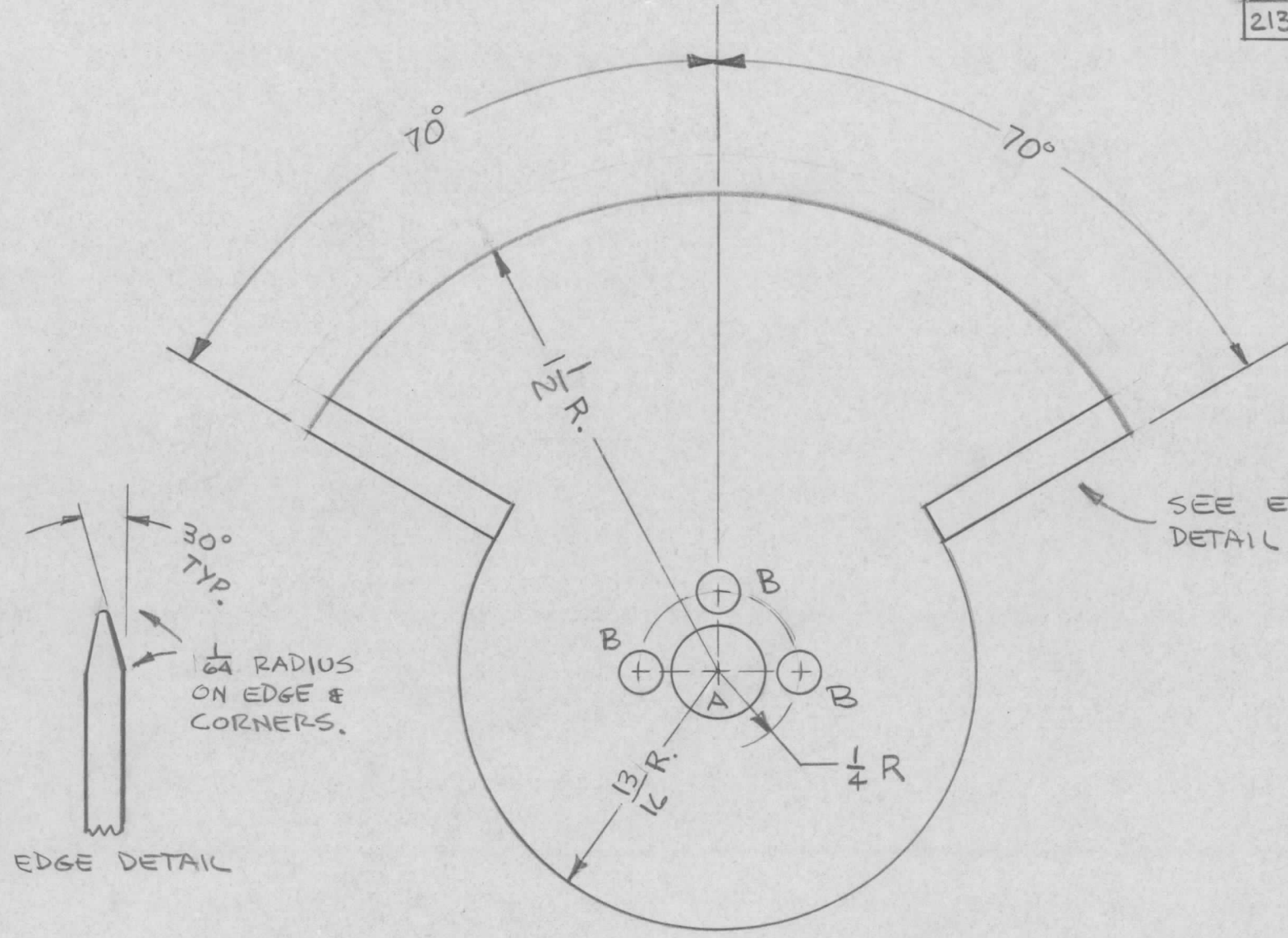


REQ'D	ITEM	PART NUMBER	DESCRIPTION	SYM.
LIST OF MATERIAL				
THE TECHNICAL MATERIEL CORP. MAMARONECK, NEW YORK				
GUIDE BAR, ROTOR				
SIZE	CODE IDENT. NO.	DWG NO.	ISSUE	
B	82679	PM1560	Ø	
SCALE			SHEET OF	

1	AX5176	AX5178
QTY / UNIT	MODEL USED ON	ASS'Y NO.
APPLICATION		
CODE		
NOTICE TO PERSONS RECEIVING THIS DRAWING THE TECHNICAL MATERIEL CORPORATION claims proprietary right in the material disclosed hereon. This drawing is issued in confidence for engineering information only and may not be reproduced or used to manufacture anything shown hereon without permission from THE TECHNICAL MATERIEL CORPORATION to the user. This drawing is loaned for mutual assistance and is subject to recall at any time.		
UNLESS OTHERWISE SPECIFIED DIMENSIONS ARE IN INCHES AND INCLUDE CHEMICALLY APPLIED OR PLATED FINISHES		
DECIMALS	FRACTIONS	TOLS.
.X ± .05	1/64	
.XX ± .01	ANGLES	
.XXX ± .005	0° -30'	
MATERIAL $\frac{1}{4}$ " ALUM ROD		
2024-T3		
FINISH SA04 YEL. IRID.		

FINAL APPROVAL	DATE
<i>CD OS</i>	11/4/73
MECH. DES.	DATE
ELECT. DES.	DATE
CHECKED <i>MR</i>	DATE 11-6-73
DRAWN <i>JSM</i>	DATE 8/11/73

REVISIONS							
E.M.N. NO.	DRAFT	CHKD	ZONE	LTR	DESCRIPTION	DATE	APPROVED
	DV			Ø	ORIGINAL RELEASE FOR PRODUCTION	11/30/73	
21373	G.D.L.	A		A	DIM 1 1/2 WAS 1 5/8	5-24-76	lh



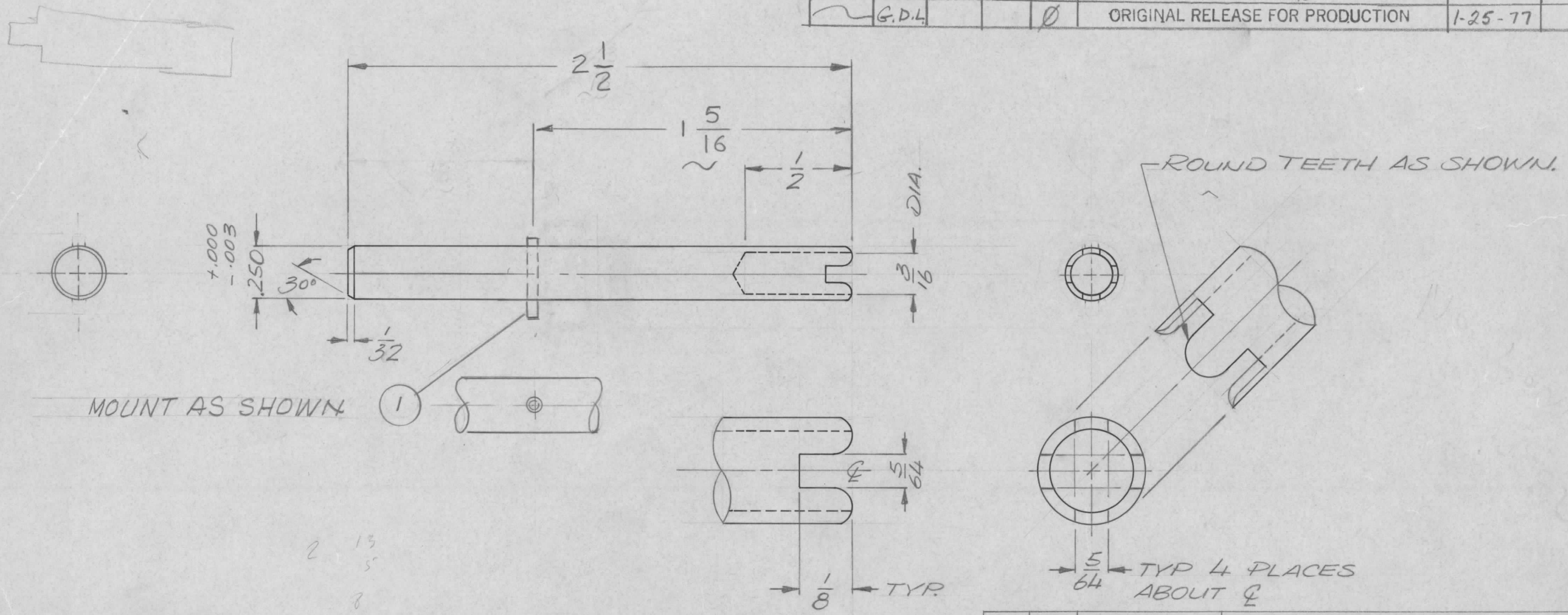
A ~ 3/32 DIA 1 REQ'D
 B ~ 1/8 DIA. 3 REQ'D

REQ'D	ITEM	PART NUMBER	DESCRIPTION	SYM.
LIST OF MATERIAL				
THE TECHNICAL MATERIEL CORP. MAMARONECK, NEW YORK				
ROTOR, BND SW				
SIZE	CODE IDENT. NO.	DWG NO.	ISSUE	
B	82679	PM 1565	A	
SCALE 2:1			SHEET OF	

1	AX5176	AX5177
QTY / UNIT	MODEL USED ON	ASS'Y NO.
APPLICATION		
CODE		
NOTICE TO PERSONS RECEIVING THIS DRAWING THE TECHNICAL MATERIEL CORPORATION claims proprietary right in the material disclosed hereon. This drawing is issued in confidence for engineering information only and may not be reproduced or used to manufacture anything shown hereon without permission from THE TECHNICAL MATERIEL CORPORATION to the user. This drawing is loaned for mutual assistance and is subject to recall at any time.		

UNLESS OTHERWISE SPECIFIED DIMENSIONS ARE IN INCHES AND INCLUDE CHEMICALLY APPLIED OR PLATED FINISHES		FINAL APPROVAL	DATE
		MECH. DES.	11/16/73
DECIMALS .X ± .05 .XX ± .01 .XXX ± .005		ELECT. DES.	DATE
FRACTIONS 1/64 ANGLES 0° .30'		CHECKED	DATE
MATERIAL .064 BRASS - HALF HARD		DRAWN	DATE 16 MAY 73
FINISH NONE			

REVISIONS							
E.M.N. NO.	DRAFT	CHKD	ZONE	LTR	DESCRIPTION	DATE	APPROVED
	G.D.L.			X1	DIMS. 2 13/16 WAS 2 7/16, 1 1/4 WAS 7/8	4-24-74	
				X2	PIN LOCATION DELETED	7-19-74	
	G.D.L.			X3	ITEM ① ADD.	9-23-75	
	G.D.L.			X4	DIM 2-1/2 WAS 2-13/16	12-14-76	
	G.D.L.			Ø	ORIGINAL RELEASE FOR PRODUCTION	1-25-77	*



REQ'D	ITEM	PART NUMBER	DESCRIPTION	SYM.
1	1	PN59-0626	PIN SPRING	

LIST OF MATERIAL

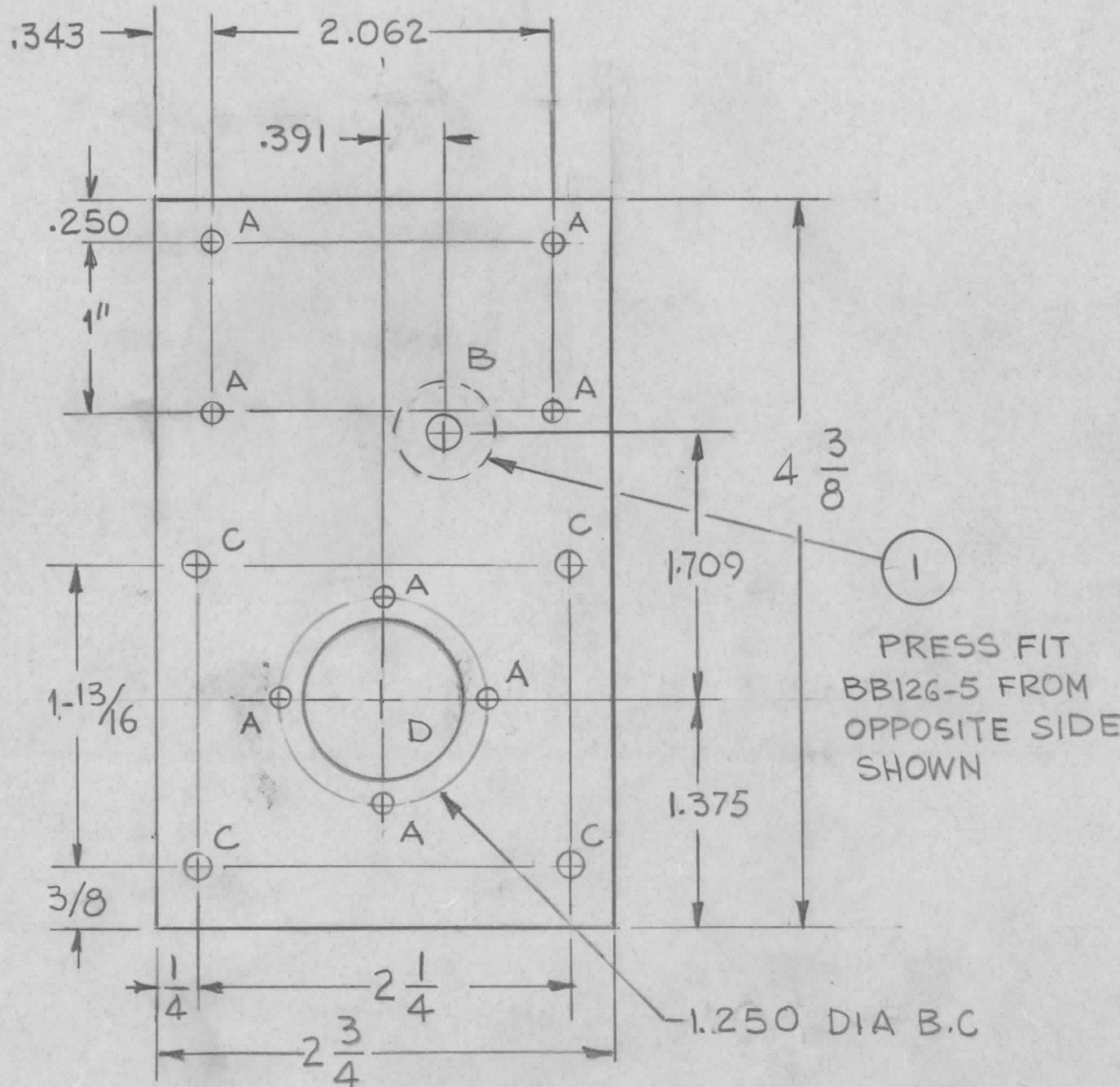
1	GPR110	AX5186
QTY / UNIT	MODEL USED ON	ASS'Y NO.
APPLICATION		
CODE		

UNLESS OTHERWISE SPECIFIED DIMENSIONS ARE IN INCHES AND INCLUDE CHEMICALLY APPLIED OR PLATED FINISHES		FINAL APPROVAL	DATE
DECIMALS	FRACTIONS	MECH. DES.	DATE
.X ± .05	1/64	ELECT. DES.	DATE
.XX ± .01	TOLS. ANGLES	CHECKED	DATE
.XXX ± .005	0° -30'	DRAWN	DATE
MATERIAL	STAINLESS STEEL		
FINISH	NATURAL		

THE TECHNICAL MATERIEL CORP. MAMARONECK, NEW YORK			
SHAFT, SW.			
SIZE	CODE IDENT. NO.	DWG NO.	ISSUE
B	82679	PM1574	①
SCALE	SHEET		OF
2:1			

NOTICE TO PERSONS RECEIVING THIS DRAWING
 THE TECHNICAL MATERIEL CORPORATION claims proprietary right in the material disclosed hereon. This drawing is issued in confidence for engineering information only and may not be reproduced or used to manufacture anything shown hereon without permission from THE TECHNICAL MATERIEL CORPORATION to the user. This drawing is loaned for mutual assistance and is subject to recall at any time.

REVISIONS							
E.M.N. NO.	DRAFT	CHKD	ZONE	LTR	DESCRIPTION	DATE	APPROVED
	CL			Ø	ORIGINAL RELEASE FOR PRODUCTION	6/16/75	
21582	GDC	AWB		A	DIA 1" WAS 15/16	10-18-77	*



HOLE	DESCRIPTION	REQ'D
A	9/64 DIA	8
B	.625 DIA	1
C	11/64 DIA	4
D	1 1/4" DIA	1

REQ'D	ITEM	PART NUMBER	DESCRIPTION	SYM.
1	1	BB126-5	RACE, BEARING	

LIST OF MATERIAL

1	TLAA-1K	AX5132
QTY / UNIT	MODEL USED ON	ASS'Y NO.
APPLICATION		
CODE		

NOTICE TO PERSONS RECEIVING THIS DRAWING
 THE TECHNICAL MATERIEL CORPORATION claims proprietary right in the material disclosed hereon. This drawing is issued in confidence for engineering information only and may not be reproduced or used to manufacture anything shown hereon without permission from THE TECHNICAL MATERIEL CORPORATION to the user. This drawing is loaned for mutual assistance and is subject to recall at any time.

UNLESS OTHERWISE SPECIFIED DIMENSIONS ARE IN INCHES AND INCLUDE CHEMICALLY APPLIED OR PLATED FINISHES	FINAL APPROVAL * [Signature]	DATE 3/27/75
DECIMALS .X ± .05 .XX ± .01 .XXX ± .005	FRACTIONS 1/64 ANGLES 0° - 30'	MECH. DES.
MATERIAL 1/8 THK ALUM 2024-T3	ELECT. DES.	DATE
FINISH 5404 YEL IRIDITE	CHECKED	DATE
	DRAWN [Signature]	DATE 3-13-74

THE TECHNICAL MATERIEL CORP. MAMARONECK, NEW YORK			
FRONT, GEAR PLATE TUNE ASSY (FOR MO126)			
SIZE B	CODE IDENT. NO. 82679	DWG NO. PM1577	ISSUE A
SCALE	SHEET		OF

5

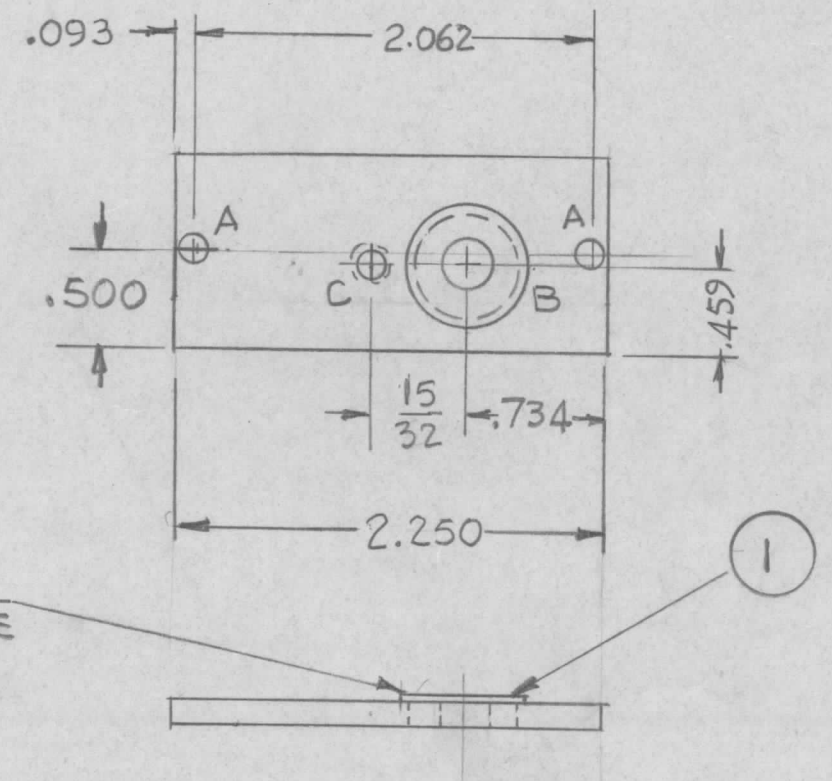
4

3

2

1

					REVISIONS		
E.M.N. NO.	DRAFT	CHKD	ZONE	LTR	DESCRIPTION	DATE	APPROVED
				X	EXP. RELEASE		
<i>th</i>	<i>cl</i>	<i>9/8/76</i>		\emptyset	ORIGINAL RELEASE	<i>8/76</i>	<i>*</i>



HOLE:
 A — 9/64 2 REQ
 B — .625⁺⁰⁰⁰₋₀₀₃ DIA
 C — DRILL & TAP FOR 8-32

PRESS FIT FROM THIS SIDE

1	1	BB126-5	RACE, BEARING	
REQ'D	ITEM	PART NUMBER	DESCRIPTION	SYM.

LIST OF MATERIAL

1	TLAA-1K	?
QTY / UNIT	MODEL USED ON	ASS'Y NO.
APPLICATION		
	CODE	

NOTICE TO PERSONS RECEIVING THIS DRAWING
 THE TECHNICAL MATERIEL CORPORATION claims proprietary right in the material disclosed hereon. This drawing is issued in confidence for engineering information only and may not be reproduced or used to manufacture anything shown hereon without permission from THE TECHNICAL MATERIEL CORPORATION to the user. This drawing is loaned for mutual assistance and is subject to recall at any time.

UNLESS OTHERWISE SPECIFIED DIMENSIONS ARE IN INCHES AND INCLUDE CHEMICALLY APPLIED OR PLATED FINISHES		FINAL APPROVAL <i>* QR</i>	DATE <i>8/2-76</i>
DECIMALS .X ± .05 .XX ± .01 .XXX ± .005	FRACTIONS 1/64 ANGLES 0° -30'	MECH. DES.	DATE
MATERIAL <i>1/8 THK ALUM 2024-T3</i>		ELECT. DES.	DATE
FINISH <i>S404 YEL IRIDITE</i>		CHECKED	DATE
		DRAWN <i>G. DE LUCA</i>	DATE <i>4.3.75</i>

THE TECHNICAL MATERIEL CORP.
 MAMARONECK, NEW YORK

PLATE, REAR GEAR
 TUNE ASSY

SIZE B	CODE IDENT. NO. 82679	DWG NO. PM 1583	ISSUE \emptyset
SCALE 1:1		SHEET OF	

5

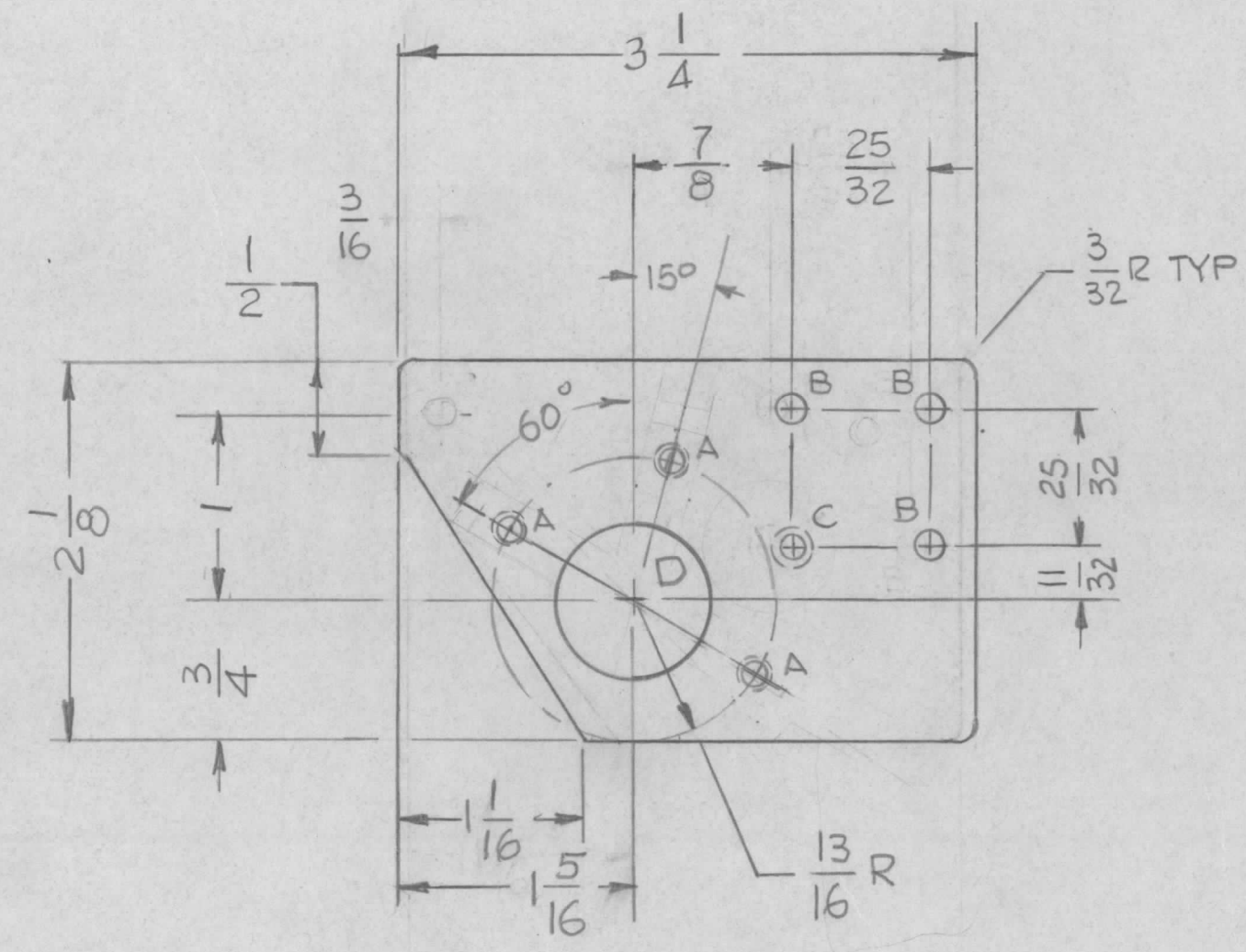
4

3

2

1

REVISIONS							
E.M.N. NO.	DRAFT	CHKD	ZONE	LTR	DESCRIPTION	DATE	APPROVED
	GDL			XI	REDRAWN & REVISED		
#	dw				ORIGINAL RELEASE	9-26-80	



HOLES

- A - .120 DIA C'SK 82° TO .230 DIA 3 REQ
- B - 11/64 DIA 4 REQ
- C - .144 DIA C'SK 82° TO .284 DIA 1 REQ
- D - 7/8 DIA 1 REQ

OBSOLETE
USE ONLY FOR
SPARE PARTS
 (SEE AX5218)

1	HFTA-10K()	AX5196
QTY / UNIT	MODEL USED ON	ASS'Y NO.
APPLICATION		
CODE		

NOTICE TO PERSONS RECEIVING THIS DRAWING
 THE TECHNICAL MATERIEL CORPORATION claims proprietary right in the material disclosed hereon. This drawing is issued in confidence for engineering information only and may not be reproduced or used to manufacture anything shown hereon without permission from THE TECHNICAL MATERIEL CORPORATION to the user. This drawing is loaned for mutual assistance and is subject to recall at any time.

UNLESS OTHERWISE SPECIFIED DIMENSIONS ARE IN INCHES AND INCLUDE CHEMICALLY APPLIED OR PLATED FINISHES

DECIMALS .X ± .05 .XX ± .01 .XXX ± .005

FRACTIONS 1/64 ANGLES 0° .30'

TOLS.

MATERIAL .064THK 5052-H32

FINISH S404 YEL IRIDITE

REQ'D	ITEM	PART NUMBER	DESCRIPTION	SYM.
LIST OF MATERIAL				
FINAL APPROVAL <i>pu</i> DATE				
MECH. DES. DATE				
ELECT. DES. DATE				
CHECKED DATE				
DRAWN G.D.L. DATE 5-12-76				
THE TECHNICAL MATERIEL CORP. MAMARONECK, NEW YORK				
PLATE, MTG CAP				
SIZE B	CODE IDENT. NO. 82679	DWG NO. PM1584	ISSUE	
SCALE 1:1	SHEET OF			

5

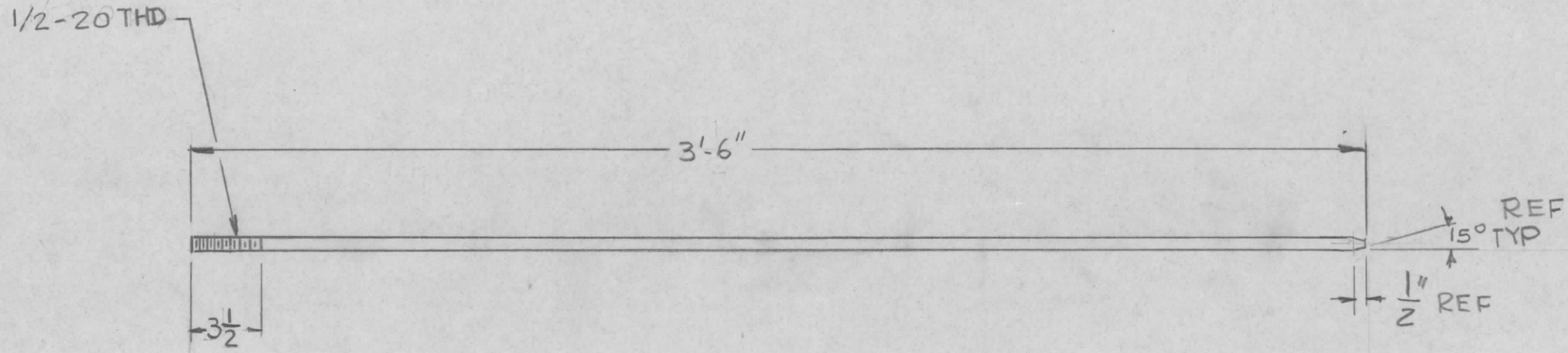
4

3

2

1

REVISIONS							
E.M.N. NO.	DRAFT	CHKD	ZONE	LTR	DESCRIPTION	DATE	APPROVED
	JJ			X	EXP RELEASE		
	a			Ø	ORIGINAL RELEASE FOR PRODUCTION	9/15/75	



7	VAS-1	
QTY / UNIT	MODEL USED ON	ASS'Y NO.
APPLICATION		
	CODE	

NOTICE TO PERSONS RECEIVING THIS DRAWING
 THE TECHNICAL MATERIEL CORPORATION claims proprietary right in the material disclosed hereon. This drawing is issued in confidence for engineering information only and may not be reproduced or used to manufacture anything shown hereon without permission from THE TECHNICAL MATERIEL CORPORATION to the user. This drawing is loaned for mutual assistance and is subject to recall at any time.

UNLESS OTHERWISE SPECIFIED DIMENSIONS ARE IN INCHES AND INCLUDE CHEMICALLY APPLIED OR PLATED FINISHES	
DECIMALS .X ± .05 .XX ± .01 .XXX ± .005	FRACTIONS 1/64 ANGLES 0° -30'
MATERIAL 1/2 THK ROD ALUM	
FINISH 6404 YEL IRIDITE	

REQ'D	ITEM	PART NUMBER	DESCRIPTION	SYM.
LIST OF MATERIAL				
FINAL APPROVAL [Signature] DATE 9/10/75				
MECH. DES. DATE				
ELECT. DES. DATE				
CHECKED [Signature] DATE				
DRAWN G.D.L. DATE 6-9-75				
SIZE	CODE IDENT. NO.	DWG NO.	ISSUE	
B	82679	PM 1586	Ø	
SCALE	NONE	SHEET	OF	

THE TECHNICAL MATERIEL CORP.
 MAMARONECK, NEW YORK

ANTENNA SUPPORT RODS

5

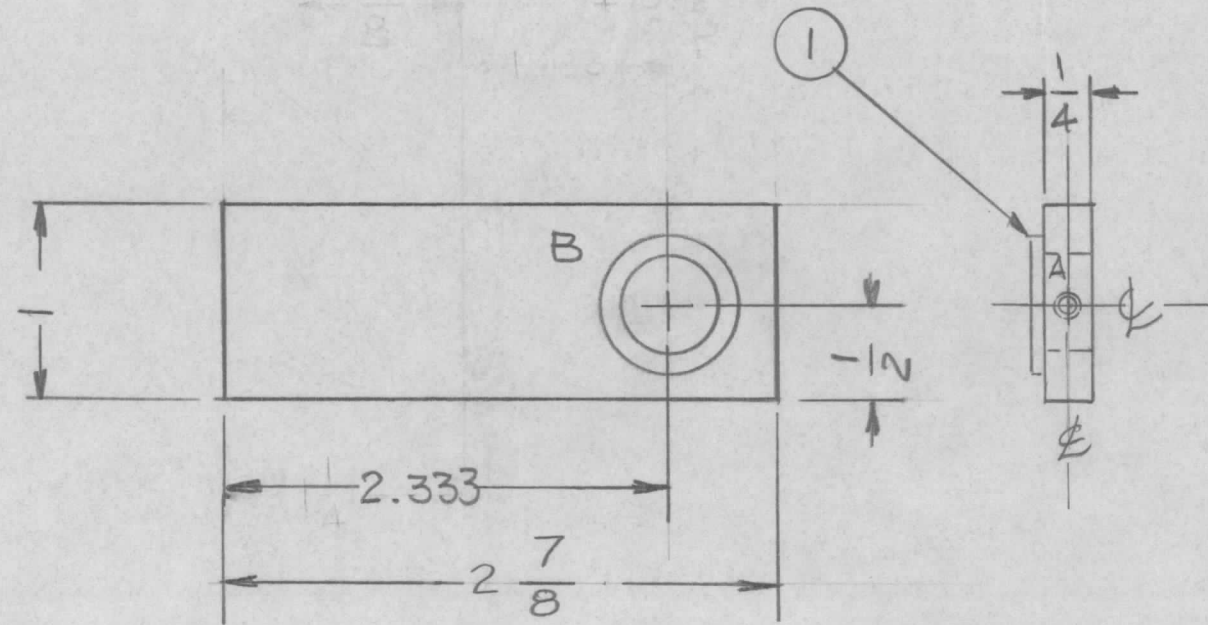
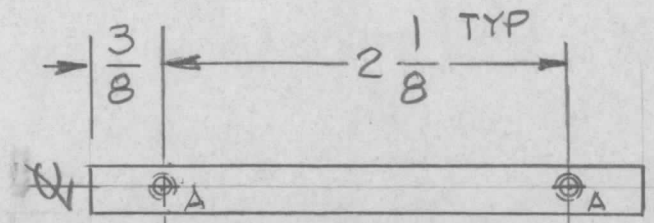
4

3

2

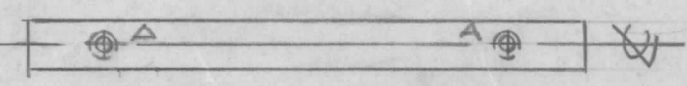
1

REVISIONS							
E.M.N. NO.	DRAFT	CHKD	ZONE	LTR	DESCRIPTION	DATE	APPROVED



2 PM -1 AS SHOWN
 2 PM -2 WELDED

HOLES:
 A - DRILL & TAP FOR .440 6 REQ
 B - .5000 ^{+0.0005} _{-.0000} DIA. 1 REQ.



1	1	BB118-37	BEARING CYLINDRICAL	
REQ'D	ITEM	PART NUMBER	DESCRIPTION	SYM.

LIST OF MATERIAL

2	GPT-10KLF	A5703
QTY / UNIT	MODEL USED ON	ASS'Y NO.
APPLICATION		
	CODE	

UNLESS OTHERWISE SPECIFIED DIMENSIONS ARE IN INCHES AND INCLUDE CHEMICALLY APPLIED OR PLATED FINISHES		FINAL APPROVAL	DATE
		MECH. DES.	DATE
		ELECT. DES.	DATE
		CHECKED	DATE
		DRAWN	DATE
MATERIAL 1/4 THK ALUM 2024-T3		G.D.L.	4-13-77
FINISH S404 YEL. IRIDITE			

THE TECHNICAL MATERIEL CORP.
 MAMARONECK, NEW YORK

PLATE MTG BEARING

NOTICE TO PERSONS RECEIVING THIS DRAWING
 THE TECHNICAL MATERIEL CORPORATION claims proprietary right in the material disclosed hereon. This drawing is issued in confidence for engineering information only and may not be reproduced or used to manufacture anything shown hereon without permission from THE TECHNICAL MATERIEL CORPORATION to the user. This drawing is loaned for mutual assistance and is subject to recall at any time.

SIZE	CODE IDENT. NO.	DWG NO.	ISSUE
B	82679	PM 1595	
SCALE	1:1	SHEET	OF

5

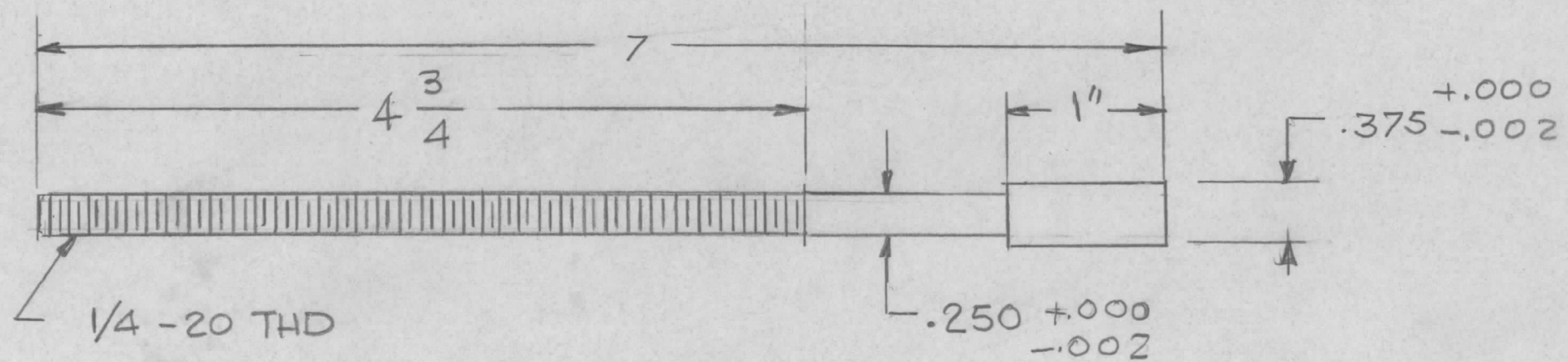
4

3

2

1

REVISIONS							
E.M.N. NO.	DRAFT	CHKD	ZONE	LTR	DESCRIPTION	DATE	APPROVED
				XI	REDRAWN & REVISED	10-17-78	
*	MAC			Ø	ORIGINAL RELEASE FOR PRODUCTION	9-20-79	FB

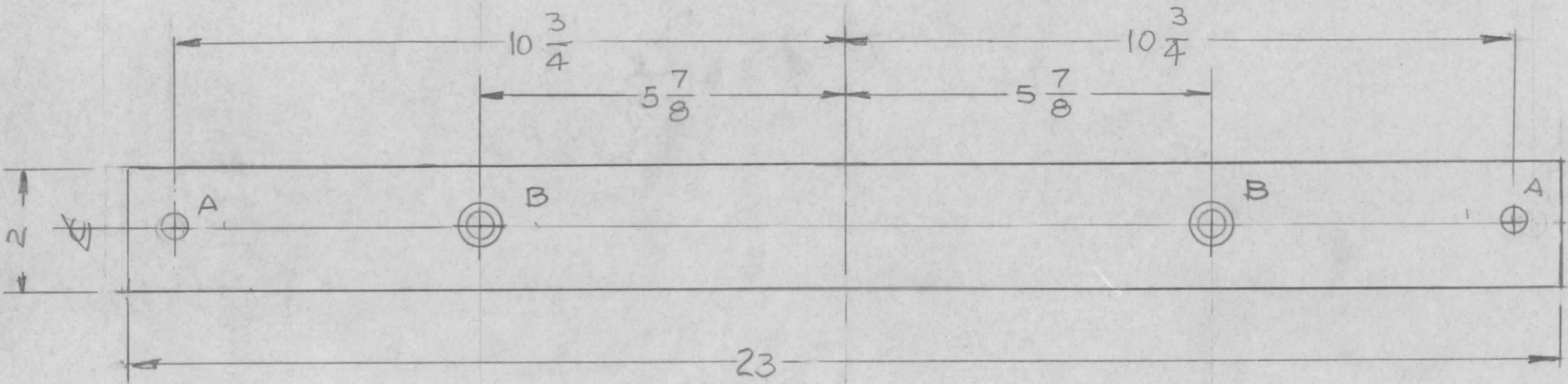


REQ'D	ITEM	PART NUMBER	DESCRIPTION	SYM.
LIST OF MATERIAL				
THE TECHNICAL MATERIEL CORP. MAMARONECK, NEW YORK				
SHAFT THREAD				
UNLESS OTHERWISE SPECIFIED DIMENSIONS ARE IN INCHES AND INCLUDE CHEMICALLY APPLIED OR PLATED FINISHES	FINAL APPROVAL <i>[Signature]</i>	DATE	SIZE CODE IDENT. NO. DWG NO. ISSUE B 82679 PM 1598 Ø	
DECIMALS .X ± .05 FRACTIONS 1/64 TOLS. ANGLES 0°-30'	MECH. DES.	DATE		
.XX ± .01 .XXX ± .005	ELECT. DES.	DATE		
	CHECKED	DATE		
MATERIAL #303 STAINLESS STEEL	DRAWN G.D.L.	DATE		
FINISH S104 PASSIVATE				
SCALE 1:1 SHEET OF				

QTY / UNIT	MODEL USED ON	ASS'Y NO.
1	MFT-HOK/J	BMA560
APPLICATION		
	CODE	

NOTICE TO PERSONS RECEIVING THIS DRAWING
 THE TECHNICAL MATERIEL CORPORATION claims proprietary right in the material disclosed hereon. This drawing is issued in confidence for engineering information only and may not be reproduced or used to manufacture anything shown hereon without permission from THE TECHNICAL MATERIEL CORPORATION to the user. This drawing is loaned for mutual assistance and is subject to recall at any time.

REVISIONS							
E.M.N. NO.	DRAFT	CHKD	ZONE	LTR	DESCRIPTION	DATE	APPROVED
X	MAC			Ø	ORIGINAL RELEASE FOR PRODUCTION	11-6-79	FB



HOLES
 A - 25/64 DIA 2 REQ'D
 B - DRILL & CHAMFER FOR 5/16-18 FHS 2 REQ'

REQ'D	ITEM	PART NUMBER	DESCRIPTION	SYM.
LIST OF MATERIAL				
THE TECHNICAL MATERIEL CORP. MAMARONECK, NEW YORK				
PLATE, MTG CASE				
QTY / UNIT		MODEL USED ON	ASS'Y NO.	
2		ATS-ZB (TU-ZB)		
APPLICATION				
CODE				
<p>NOTICE TO PERSONS RECEIVING THIS DRAWING THE TECHNICAL MATERIEL CORPORATION claims proprietary right in the material disclosed hereon. This drawing is issued in confidence for engineering information only and may not be reproduced or used to manufacture anything shown hereon without permission from THE TECHNICAL MATERIEL CORPORATION to the user. This drawing is loaned for mutual assistance and is subject to recall at any time.</p>				
UNLESS OTHERWISE SPECIFIED DIMENSIONS ARE IN INCHES AND INCLUDE CHEMICALLY APPLIED OR PLATED FINISHES		FINAL APPROVAL	DATE	
DECIMALS .X ± .05 .XX ± .01 .XXX ± .005		MECH. DES.	DATE	
FRACTIONS 1/64 ANGLES 0° .30'		ELECT. DES.	DATE	
MATERIAL 2 X 1/2 BAR 6063 T5		CHECKED	DATE	
FINISH S404 YEL IRIDITE		DRAWN	DATE	
SIZE	CODE IDENT. NO.	DWG NO.	ISSUE	
B	82679	PM 1599	Ø	
SCALE	SHEET		OF	
1:1				