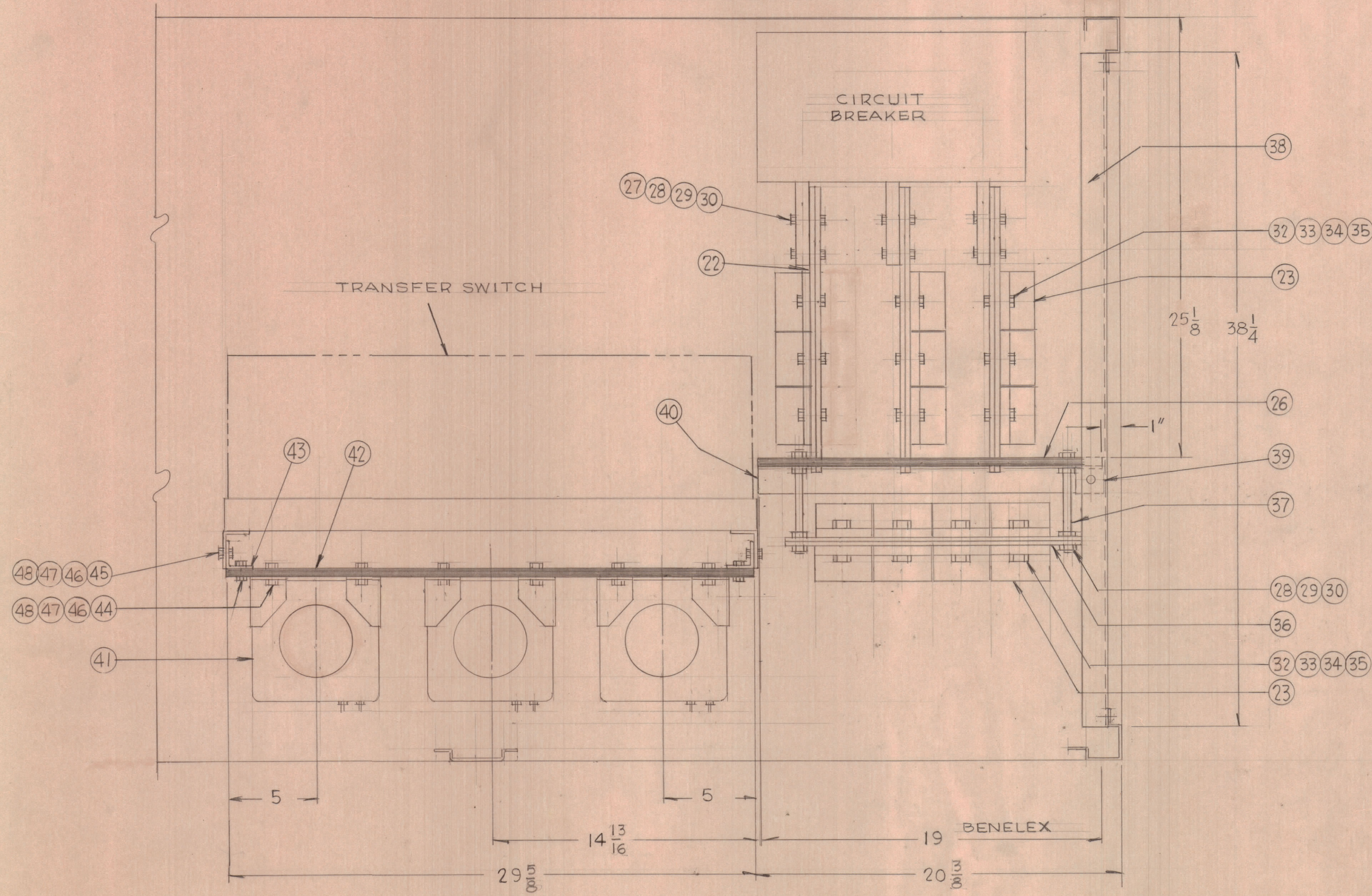


REVISIONS						
ZONE	LTR	DESCRIPTION	DATE	DRAFT	CHK'D	APP'D

BENELEX Ltr PX1203



VIEW A-A

QTY REQ	QTY REQ	QTY REQ	ITEM	PART NO.	MANUFACTURER	DESCRIPTION	SYM
PARTS LIST							

INTERPRET DRAWING PER LISTED DOCUMENTS		UNLESS OTHERWISE SPECIFIED DIMENSIONS ARE IN INCHES AND INCLUDE CHEMICALLY APPLIED OR PLATED FINISHES REMOVE ALL BURRS AND SHARP EDGES	
DIMENSIONING MIL - STD - 8 SURFACE ROUGHNESS MIL - STD - 10 ABBREVIATIONS MIL - STD - 12 ELECTRONIC SYMBOLS MIL - STD - 15 WELDING SYMBOLS JAN - STD - 19		TOLERANCES ON FRACTIONS ANGLES DECIMALS ± 1/32	
NEXT ASSY	USED ON	MATERIAL	FINISH
AX 751			

DRAWN	FRAMPTON	DATE	5-23-73
CHECKED		DATE	5-23-73
D. ENG.		DATE	5-23-73
P. ENG.		DATE	
P. MGR.		DATE	
CHIEF, ENG. DEPT.		DATE	

THE TMC SYSTEMS AND POWER CORPORATION SPRINGFIELD, VIRGINIA			
500KW AC CONTROL CABINET BUS BAR ASSEMBLY			
SIZE	CODE IDENT NO	DWG. NO.	REV
D	24146	PM1527	
SCALE			SHEET 2 OF 2

NOTICE TO PERSONS RECEIVING THIS DRAWING  
THE TMC SYSTEMS AND POWER CORPORATION claims proprietary right in the material disclosed herein. This drawing is issued in confidence for engineering information only and may not be reproduced or used to manufacture anything shown hereon without permission from THE TMC SYSTEMS AND POWER CORPORATION to the user. This drawing is loaned for mutual assistance and is subject to recall at any time.