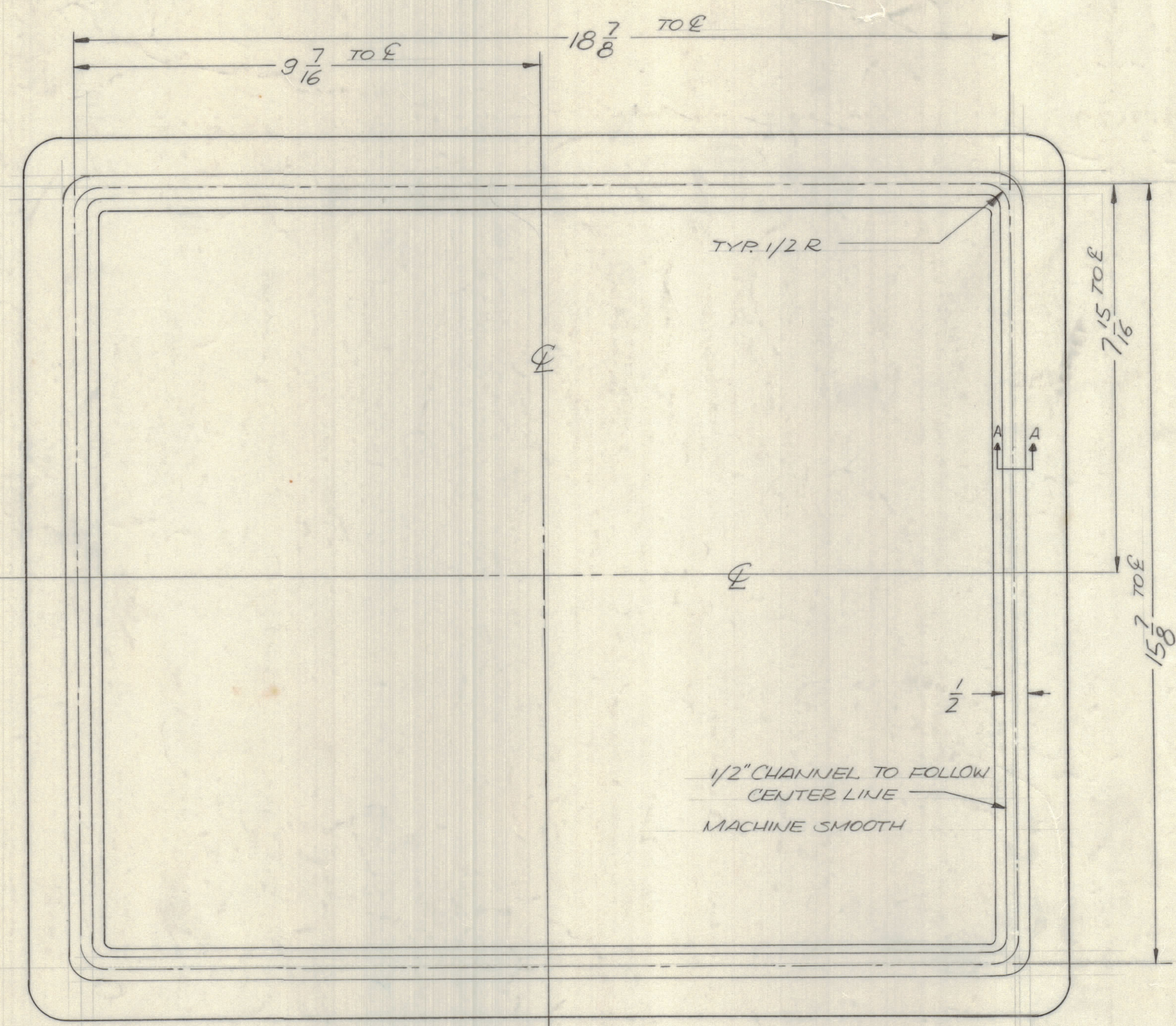
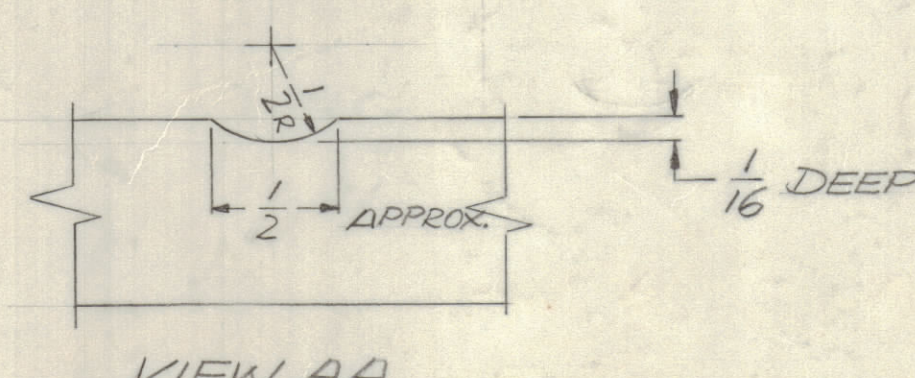


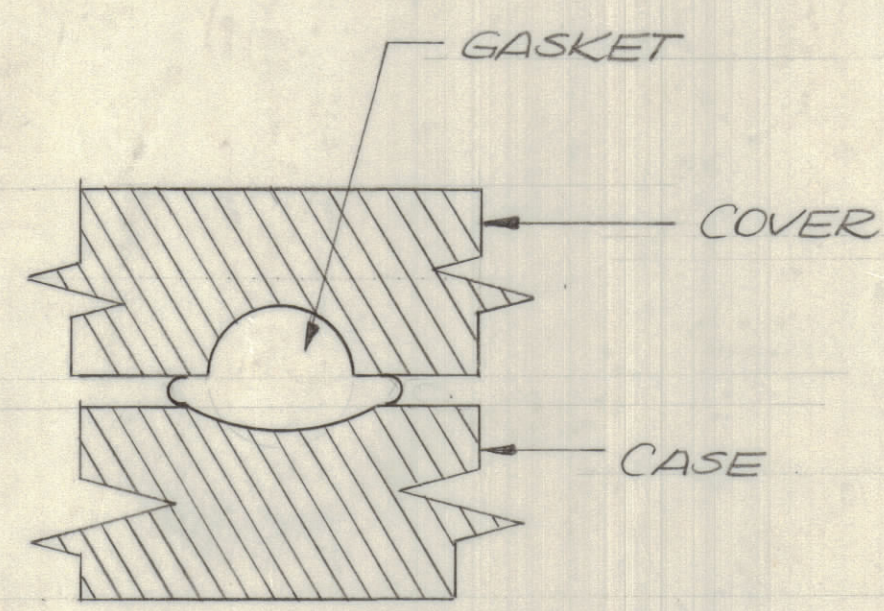
REVISIONS							
E.M.N.O	DRAFT	CHKD	ZONE	LTR	DESCRIPTION	DATE	APPROVED
	GE			X	SEE SHEET ONE	3/7/73	
	DV			Ø	ORIGINAL RELEASE FOR PRODUCTION	12/7/73	
2131	GE	ED		A	SEE SHEET ONE	1/23/74	ED



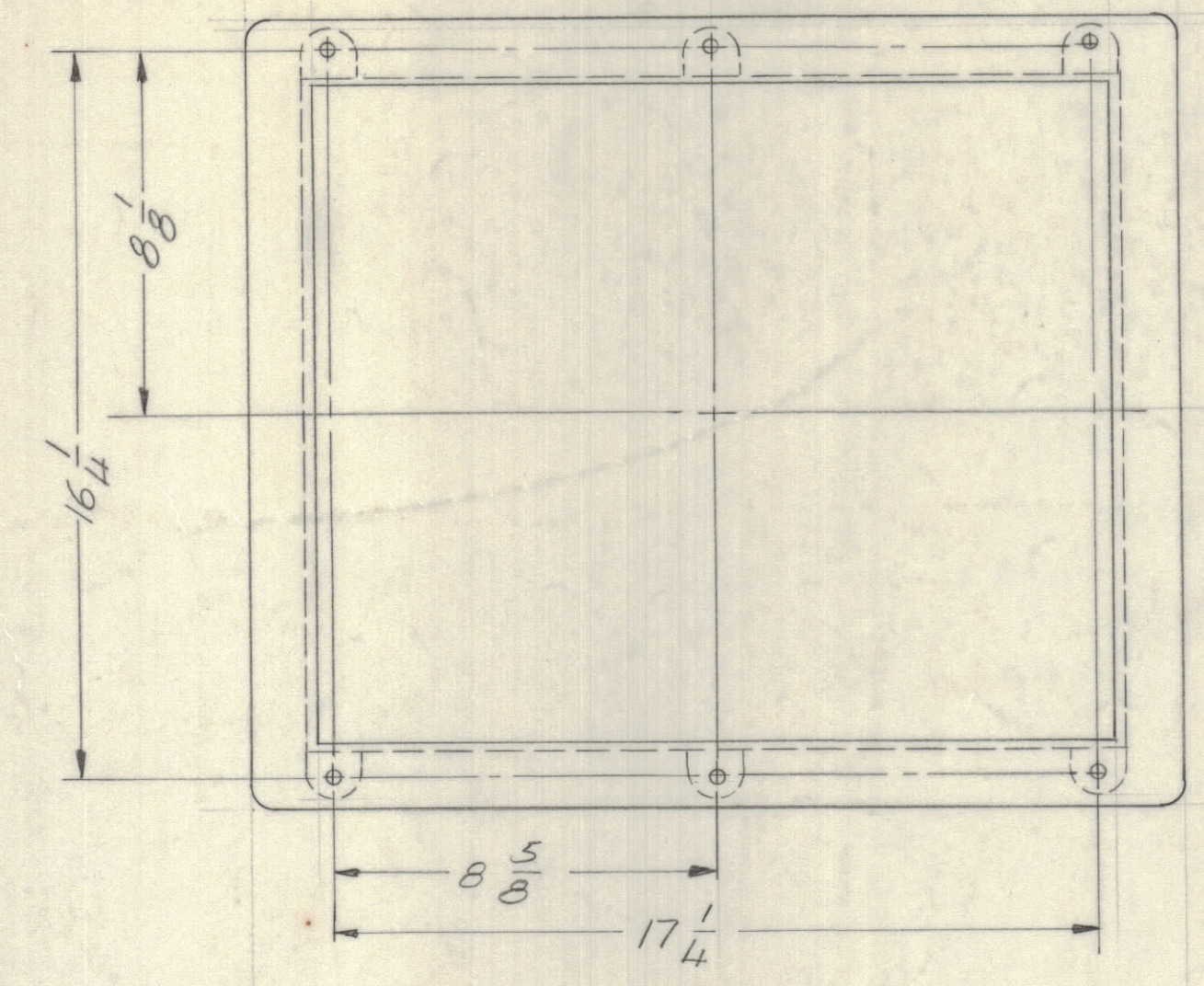
CASE GASKET CHANNEL DETAIL



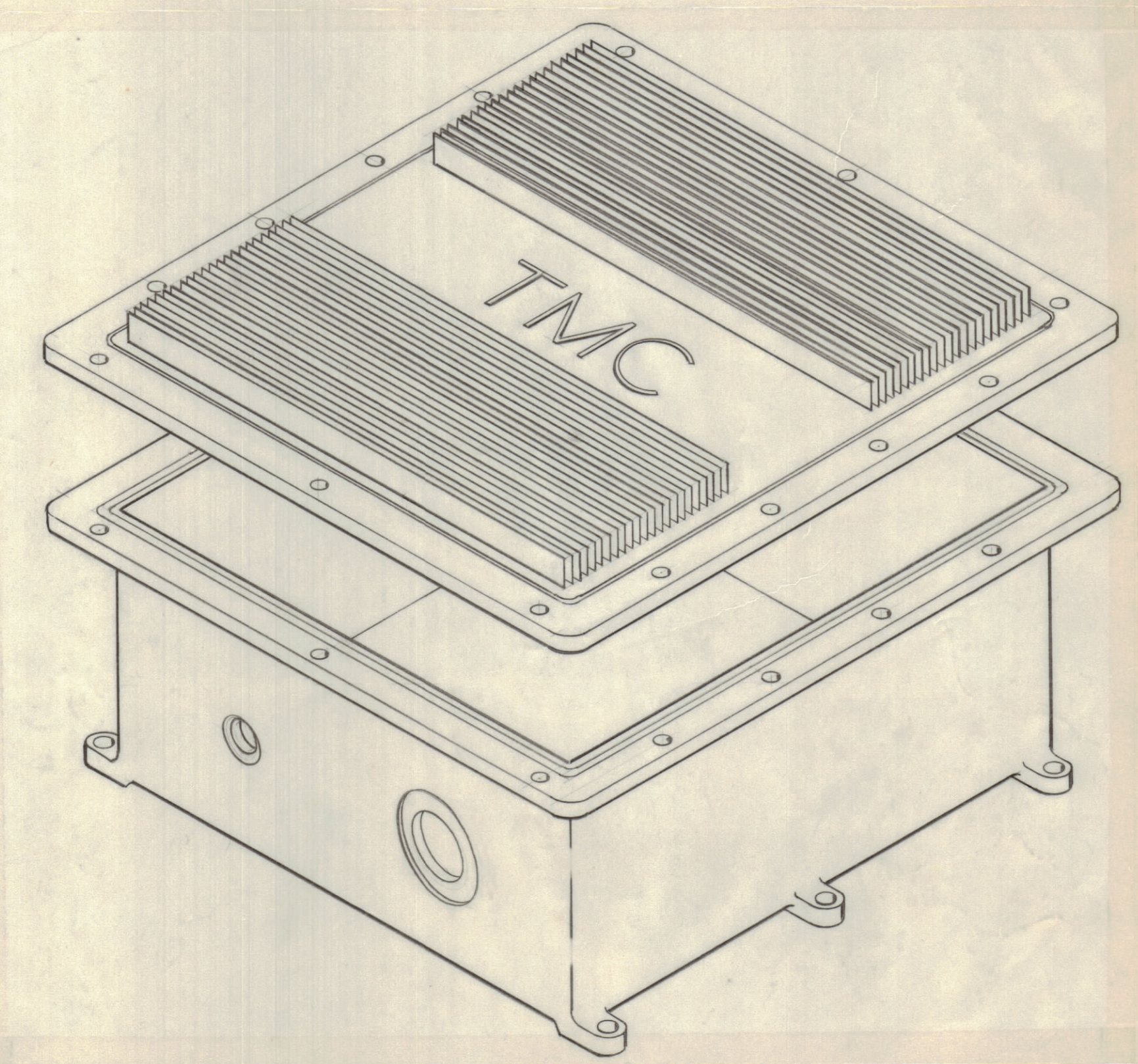
VIEW AA



GASKET SEATING DETAIL



MOUNTING DETAIL



- FINISH NOTES:
1. S404 - IRIDITE 14-2 AL-COAT.
 2. S114 - ZINC CHROMATE PRIMER
 3. S115 - SMOOTH GRAY ENAMEL

PAINT ALL SURFACES EXCEPT MACHINED AREAS
EXCEPT MACHINED AREAS

QTY / UNIT	MODEL USED ON	ASS'Y NO.
	AX5176	
APPLICATION		
CODE		
<small>NOTICE TO PERSONS RECEIVING THIS DRAWING</small> <small>THE TECHNICAL MATERIEL CORPORATION claims proprietary right in the material disclosed hereon. This drawing is issued in confidence for engineering information only and may not be reproduced or used to manufacture anything shown hereon without permission from THE TECHNICAL MATERIEL CORPORATION to the user. This drawing is loaned for mutual assistance and is subject to recall at any time.</small>		

QTY. REQ.	ITEM	PART NO.	DESCRIPTION	SYMBOL
F. BUDETTI LIST OF MATERIAL				
UNLESS OTHERWISE SPECIFIED DIMENSIONS ARE IN INCHES AND INCLUDE CHEMICALLY APPLIED OR PLATED FINISHES				
TOLERANCES ON				
DECIMALS	FRACTIONS			
X = .05	= 1/64			
XX = .01	ANGLES			
XXX = .005	± 0° -30'			
MATERIAL ALUMINUM 356-T6		SIZE CODE IDENT NO. DWG NO.		ISSUE
FINISH AS NOTED		D 82679	DM1522	A
		SCALE 1/2	SHEET 2 OF 2	