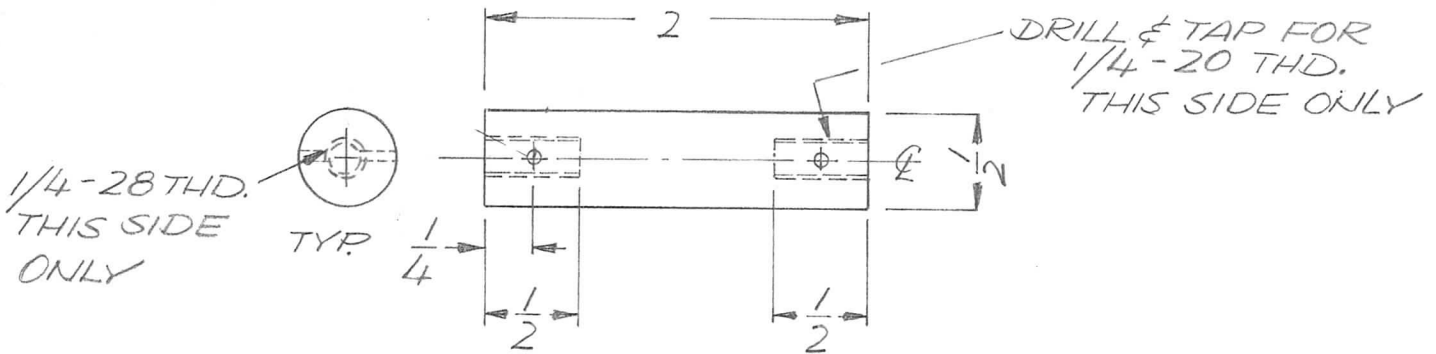
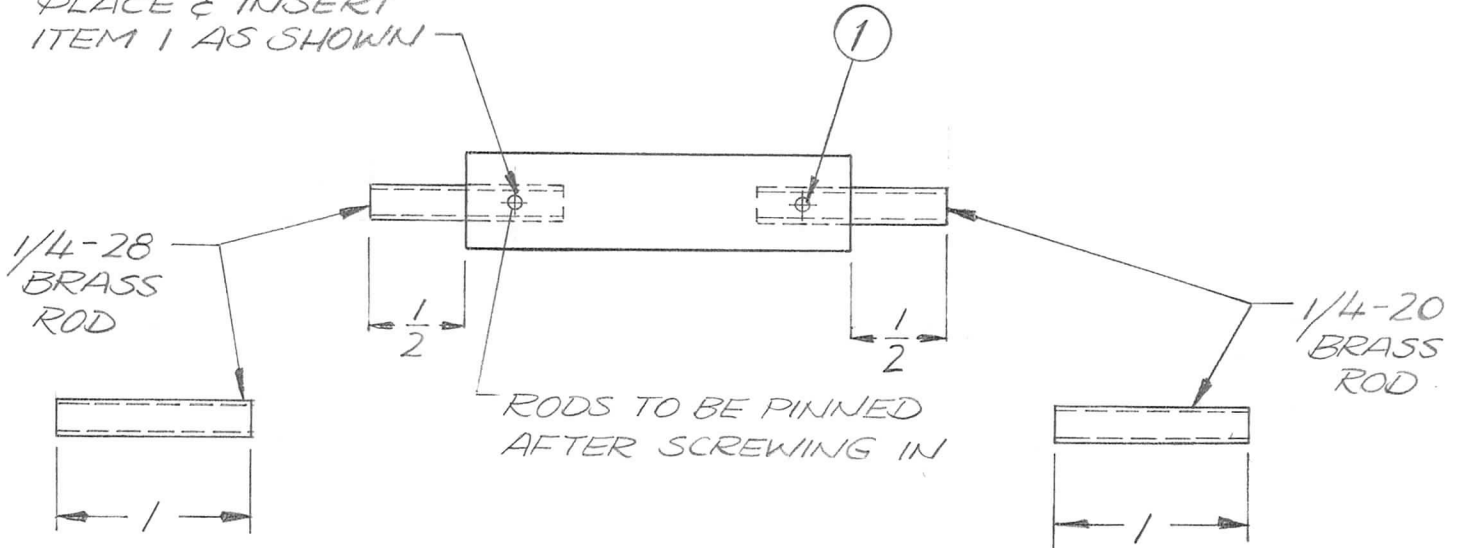


APPLICATION			REVISIONS						
QTY	MODEL USED ON	ASS'Y NO.	LTR	DESCRIPTION	DATE	E.M.N.NO	DRAFT	CHKD	APPD
1	TLAA-1K	AX5132	Ø	ORIGINAL RELEASE	4/14/73		CS		



.062 DIA. DRILL IN PLACE & INSERT ITEM 1 AS SHOWN



REQ'D	ITEM	PART NUMBER	DESCRIPTION	SYM.
2	1	PN-99-062-8	PIN	

F.B. LIST OF MATERIAL			
UNLESS OTHERWISE SPECIFIED DIMENSIONS ARE IN INCHES AND INCLUDE CHEMICALLY APPLIED OR PLATED FINISHES		THE TECHNICAL MATERIEL CORP. MAMARONECK, NEW YORK	
DECIMALS .X ± .05 .XX ± .01 .XXX ± .005	FRACTIONS 1/64 ANGLES 0° - 30'	FINAL APPROVAL <i>JM</i>	DATE 29 MAR 73
MATERIAL G11 EPOXY	MECH. DES. <i>JM</i>	DATE 29 MAR 73	SHAFT INS. CAP.
FINISH	ELECT. DES.	DATE	
	CHECKED	DATE	
	DRAWN <i>GE</i>	DATE 10/2/72	

NOTICE TO PERSONS RECEIVING THIS DRAWING
THE TECHNICAL MATERIEL CORPORATION claims proprietary right in the material disclosed hereon. This drawing is issued in confidence for engineering information only and may not be reproduced or used to manufacture anything shown hereon without permission from THE TECHNICAL MATERIEL CORPORATION to the user. This drawing is loaned for mutual assistance and is subject to recall at any time.

SIZE	CODE IDENT. NO.	DWG NO.	ISSUE
A	82679	PM1519	Ø
SCALE 1:1		SHEET	OF