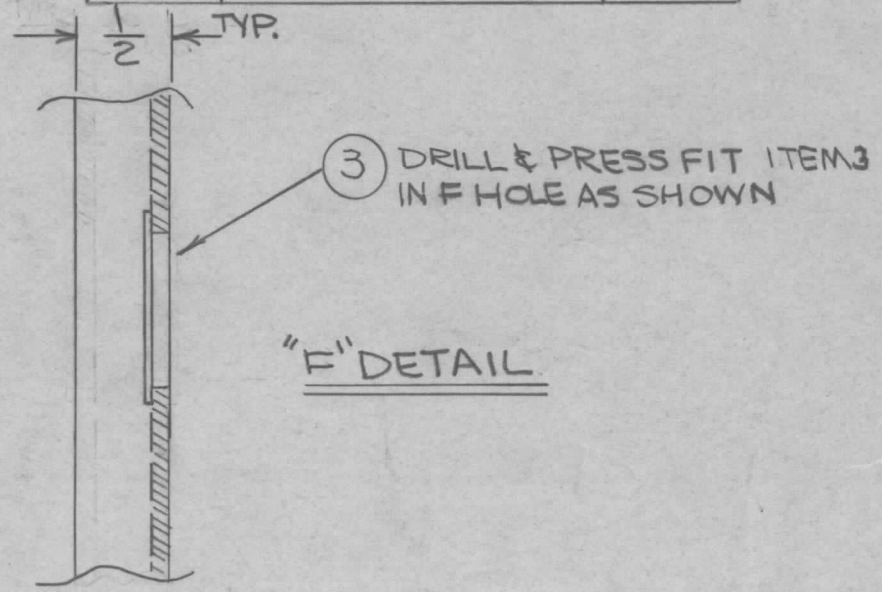


REVISIONS							
ZONE	LTR	DESCRIPTION	DATE	E.M.N.NO	DRAFT	CHKD	APPD
	Ø	ORIG. REL. FOR PROD.	5-22-69		BE	WR	
A		2" HOLES RELOC, 30° DIM DELE	1/27/70	19738	CH	RT	RT
B		"G" HOLE ADD	2-13-79	21694	GDL		QQ

HOLE	DESCRIPTION	REQ.
A	9/64 DIA.	1
B	.161-.164 DIA.	3
C	.191-.194 DIA.	4
D	15/64 DIA.	4
E	1 1/2 DIA.	1
F	SEE DETAIL	1
G	5/16 DIA	1



REQ'D	ITEM	PART NUMBER	DESCRIPTION	SYM.
1	3	BB126-16	BEARING, BALL	F
3	2	NT129-0440-G	NUT, PLAIN, SPLINE TYPE	B
4	1	NT129-0632-G	NUT, PLAIN, SPLINE TYPE	C

LIST OF MATERIAL

QTY / UNIT	MODEL USED ON	ASS'Y NO.
1	HFTA-10K/125 PALA-10K	AS 145
APPLICATION		
CODE		

UNLESS OTHERWISE SPECIFIED DIMENSIONS ARE IN INCHES AND INCLUDE CHEMICALLY APPLIED OR PLATED FINISHES

DECIMALS .X ± .05 .XX ± .01 .XXX ± .005

FRACTIONS 1/64 ANGLES 0° -30'

MATERIAL 1/8 ALUM. 5052 H32

FINISH S404 YEL. IRIDITE

FINAL APPROVAL *ALP. WR* DATE 1-9-70

MECH. DES. DATE

ELECT. DES. DATE

CHECKED DATE

DRAWN A. PETROCCA DATE

THE TECHNICAL MATERIEL CORP.  
MAMARONECK, NEW YORK

PLATE, BOTTOM, GEARBOX BAND SW.

SIZE	CODE IDENT. NO.	DWG NO.	ISSUE
B	82679	PM1402	B.

SCALE SHEET OF

NOTICE TO PERSONS RECEIVING THIS DRAWING  
THE TECHNICAL MATERIEL CORPORATION claims proprietary right in the material disclosed hereon. This drawing is issued in confidence for engineering information only and may not be reproduced or used to manufacture anything shown hereon without permission from THE TECHNICAL MATERIEL CORPORATION to the user. This drawing is loaned for mutual assistance and is subject to recall at any time.