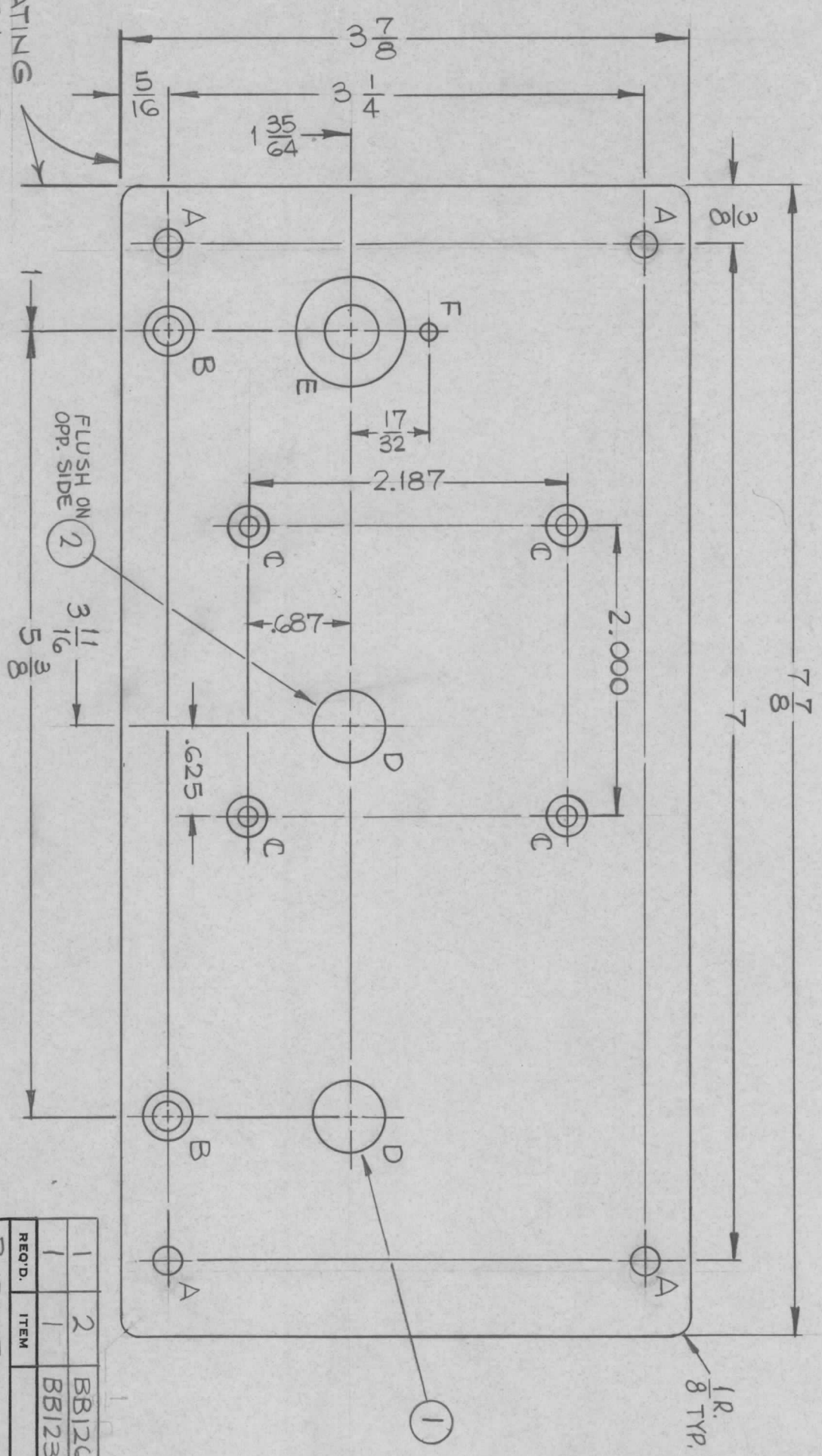


SYM	DESCRIPTION	DATE	E.M.N. NO.	DRAFT	CHKD	APPD
X	EXPERIMENTAL RELEASES	6/4/66	X	WAA	WAS	WAS
X1	PM1314 WAS AS 4963	6/7/66	X1	WAA	WAS	WAS
X2	ITEMS 1 & 2 ADDED, B HOLE WAS C'BORE 11/32 X 3/32 DR. 9-20-66	9-20-66	X2	WAA	WAS	WAS
Ø	ORIGINAL RELEASE FOR PRODUCTION	11/18/66	Ø	RME	WAS	WAS

PM1314

HOLE	DESCRIPTION	REQ.
A	13/64 DIA.	4
B	13/64 DIA THRU C'BORE 3/8 x 1/8 DEEP.	2
C	.144 DIA THRU C'SK. 82° TO .284 DIA.	4
D	.4990 - .4995 DIA.	2
E	3/8 DIA THRU C'BORE 3/4 x 1/8 DEEP	1
F	1/8 DIA.	1



LOCATING
BASE LINES

QTY./UNIT	1	TLAA-2.5K	BMA-128
SCALE	1:1	MODEL USED ON	ASSY. NO.
		CODE	
		A	

FINISH	S404 YELLOW IRIDITE
MATERIAL	3/16 THK. ALUMINUM-2024-T3

TITLE	PANEL, SUB. PLATE
DRAWN	H. AUSTIN
CHECKED	[Signature]
ELECT. DES.	[Signature]
MECH. DES.	[Signature]
DATE	11-17-66
DATE	11-11-66
DATE	11-18-66
DATE	11-18-66
DATE	11-18-66

UNLESS OTHERWISE SPECIFIED DIMENSIONS ARE IN INCHES AND INCLUDE CHEMICALLY APPLIED OR PLATED FINISHES	DECIMALS X ± .05 XX ± .01 .XXX ± .005	TOLERANCES	FRACTIONS ± 1/64 ANGLES ± 0° 30'
---	--	------------	---

REQD.	ITEM	PART NUMBER	DESCRIPTION	SYMBOL
1	2	BB12C-15	BEARING, BALL	
1	1	BB123-32	BEARING, CYLINDRICAL	

LIST OF MATERIAL	THE TECHNICAL MATERIEL CORP. MAMARONECK, NEW YORK
------------------	--

FINAL APPROVAL	[Signature]	DATE	11/18/66
REV. LTR.			

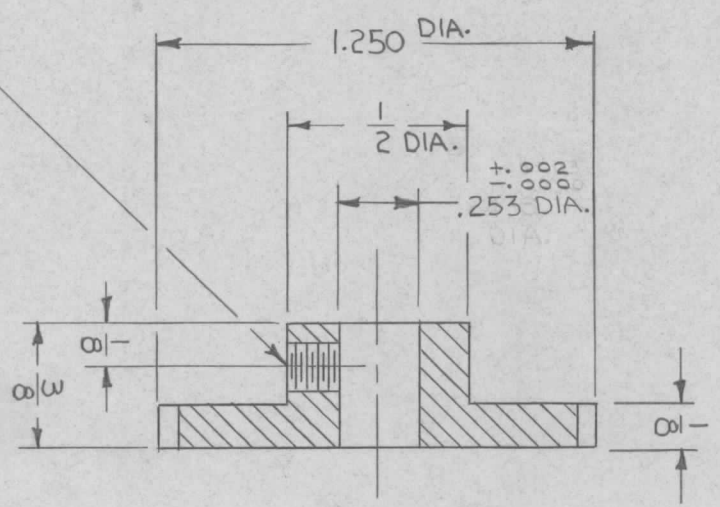
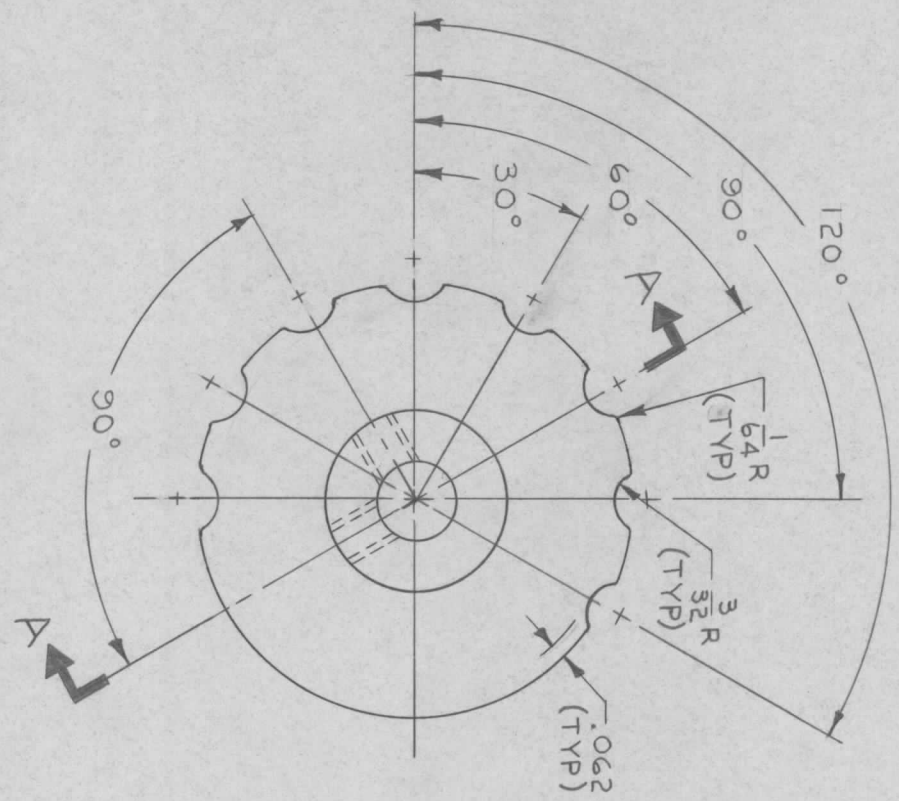
NOTES

THE CONTENTS OF THIS DRAWING ARE THE EXCLUSIVE PROPERTY OF THE TECHNICAL MATERIEL CORP. ITS UNAUTHORIZED USE OR REPRODUCTION IN WHOLE OR IN PART IS STRICTLY FORBIDDEN.

REVISIONS		SYM	DESCRIPTION	DATE	E.M.N. NO.	DRAFT	CHKD	APPD
X	EXPERIMENTAL RELEASE			8/17/66	X	RHE	RME	
X1	CHGD. .2438 $\pm .0003$ DIA TO .253 $\pm .0003$ DIA.			9/22/66	X1	RME		
Ø	ORIGINAL RELEASE FOR PRODUCTION			9/26/66	Ø			

PM1318

SECTION A-A



NO. 36 (.1065) DRILL & TAP NO. 6-32 NC-2B THD (2-PLACES)

Q'TY./UNIT	1	MODEL USED ON	SMEA-1	ASSY. NO.	
SCALE	2/1	CODE			

THE CONTENTS OF THIS DRAWING ARE THE EXCLUSIVE PROPERTY OF THE TECHNICAL MATERIEL CORP. ITS UNAUTHORIZED USE OR REPRODUCTION IN WHOLE OR IN PART IS STRICTLY FORBIDDEN.

REQ'D.	ITEM	PART NUMBER	DESCRIPTION	SYMBOL
	R.HAY		ALUMINUM 2024-T4	
			YELLOW IRIDIUM PER TMC SPEC 5404	

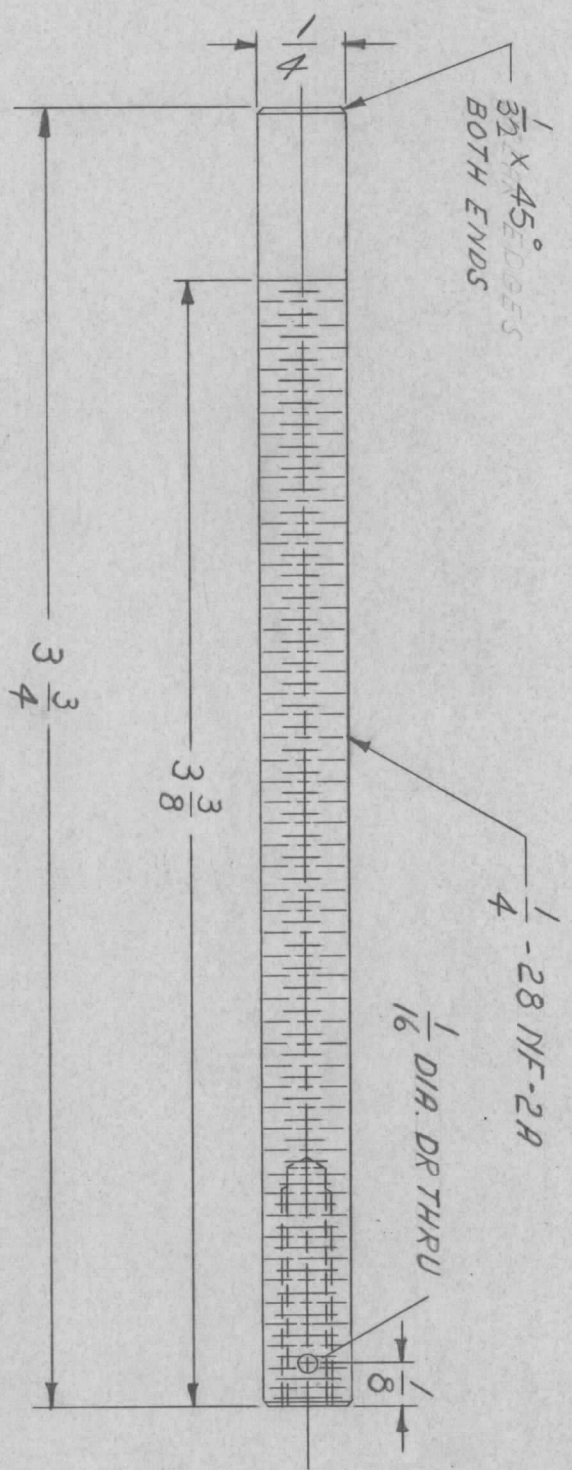
UNLESS OTHERWISE SPECIFIED DIMENSIONS ARE IN INCHES AND INCLUDE CHEMICALLY APPLIED OR PLATED FINISHES		DECIMALS		FRACTIONS	
.X ± .05		± 1/64		± 1/64	
.XX ± .01		± 1/32		± 1/32	
.XXX ± .005		± 0° 30'		± 0° 30'	

DRAWN		DATE	FINAL APPROVAL		DATE
RME		8-4-66	[Signature]		9/26/66
CHECKED		DATE	[Signature]		DATE
RME		9/24/66	[Signature]		9/26/66
ELECT. DES.		DATE	[Signature]		DATE
MECH. DES.		DATE	[Signature]		DATE

TITLE		SHEET	
CAM, SWITCH, 8 POSITION		PM1318	
MATERIAL		REV. LTR.	
ALUMINUM 2024-T4		Ø	

THE TECHNICAL MATERIEL CORP.
MAMARONECK, NEW YORK

REVISIONS						
ZONE	LTR	DESCRIPTION	DATE	E.M.N. NO	DRAFT	CHKD
X		EXPERIMENTAL RELEASE	3-15-67		L.A.K.	
		ORIG RELEASE FOR PROD	4-3-67		CV	



#36 (106) DR.
11/16 DEEP
6-32 TAP NF-2B
5/8 DEEP

1	A0-103	A4585
1	A0-100	A4585
APPLICATION		
QTY / UNIT	MODEL USED ON	ASS'Y NO.
	CODE	

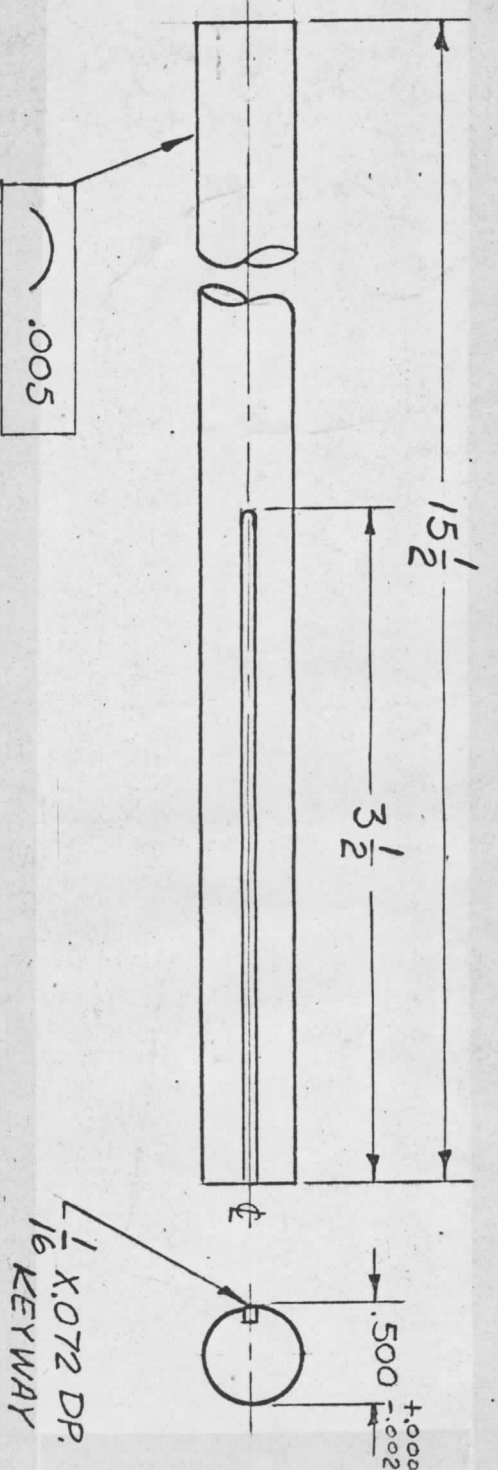
UNLESS OTHERWISE SPECIFIED DIMENSIONS ARE IN INCHES AND INCLUDE CHEMICALLY APPLIED OR PLATED FINISHES	FRACTIONS	1/64
DECIMALS	TOLS.	ANGLES
X ± .05	.XX ± .01	0° - 30'
.XXX ± .005		
MATERIAL	STEEL # 303	
FINISH	S104 PASSIVATE	

REQ'D ITEM	PART NUMBER	DATE
POSE		3/10/67
FINAL APPROVAL		
MECH. DES.		
ELECT. DES.		
CHECKED		
DRAWN		

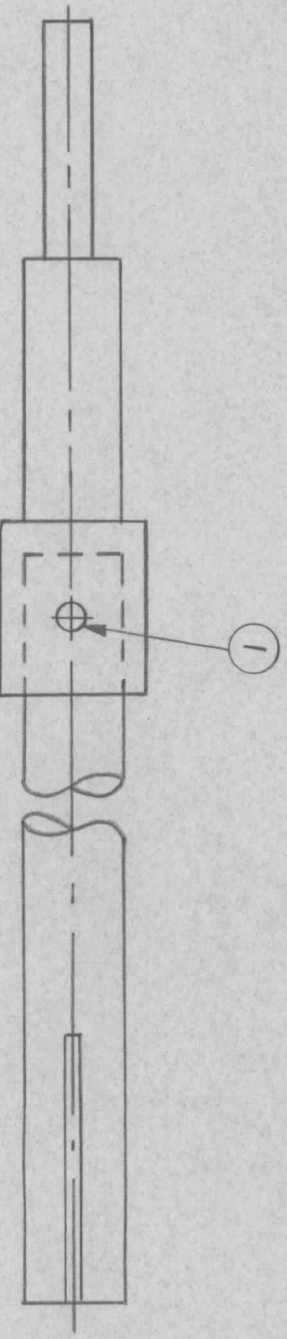
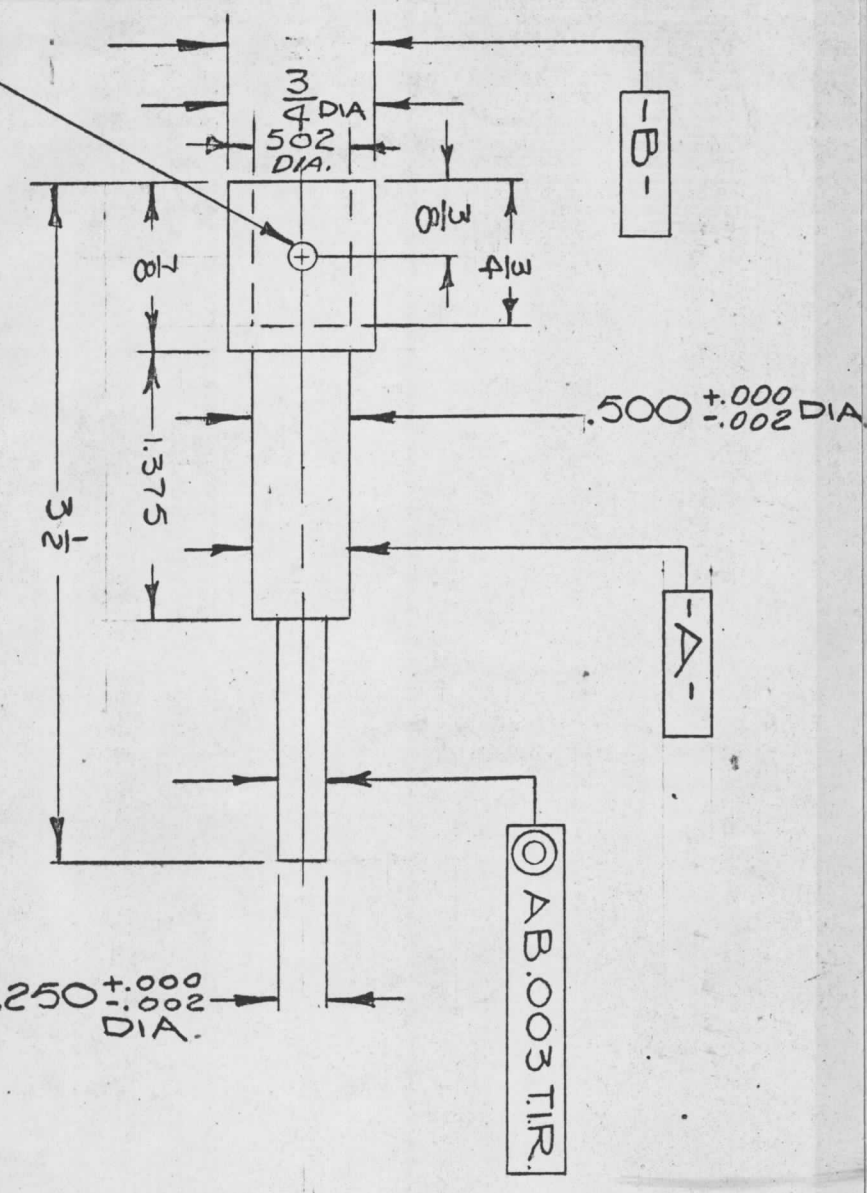
LIST OF MATERIAL			
THE TECHNICAL MATERIEL CORP.			
MAMARONECK, NEW YORK			
STUD, CORE			
SIZE	CODE IDENT. NO.	DWG NO.	ISSUE
B	82679	PM1338	0
SCALE	MIL	SHEET	OF

NOTICE TO PERSONS RECEIVING THIS DRAWING
THE TECHNICAL MATERIEL CORPORATION claims proprietary right in the material disclosed hereon. This drawing is issued in confidence for engineering information only and may not be reproduced or used to manufacture anything shown hereon without permission from THE TECHNICAL MATERIEL CORPORATION to the user. This drawing is loaned for mutual assistance and is subject to recall at any time.

REVISIONS						
ZONE	LTR	DESCRIPTION	DATE	E.M.N.NO	DRAFT	CHKD
A		REVISED BY TR EDDMAN OLD "B" SIZE FOR HKT	10.22.68	19087	W.S.	FAO = B



PM1345-1 (SHAFT)
 MATERIAL: G10 EPOXY .500 DIA.
 FINISH: NATURAL, S113 FUNGUS PROOF



PM1345-3 (BAND/SWITCH SHAFT ASS'Y)

REQ'D ITEM	PART NUMBER	DESCRIPTION	SYM.
1	PN114-1	PIN, GROOVED, TAPER	

THE TECHNICAL MATERIEL CORP.
 MAMARONECK, NEW YORK

SHAFT, BANDSWITCH

QTY / UNIT	MODEL USED ON	ASS'Y NO.
1	BCT-10KA	

APPLICATION CODE

PM1345-2 (HUB)
 MATERIAL: STAINLESS # 303
 FINISH: S104 PASSIVATE

NOTICE TO PERSONS RECEIVING THIS DRAWING
 THE TECHNICAL MATERIEL CORPORATION claims proprietary right in the material disclosed hereon. This drawing is issued in confidence for engineering information only and may not be reproduced or used to manufacture anything shown hereon without permission from THE TECHNICAL MATERIEL CORPORATION to the user. This drawing is loaned for mutual assistance and is subject to recall at any time.

DECIMALS	FRACTIONS
.X ± .05	1/64
.XX ± .01	ANGLES
.XXX ± .005	90° .30'

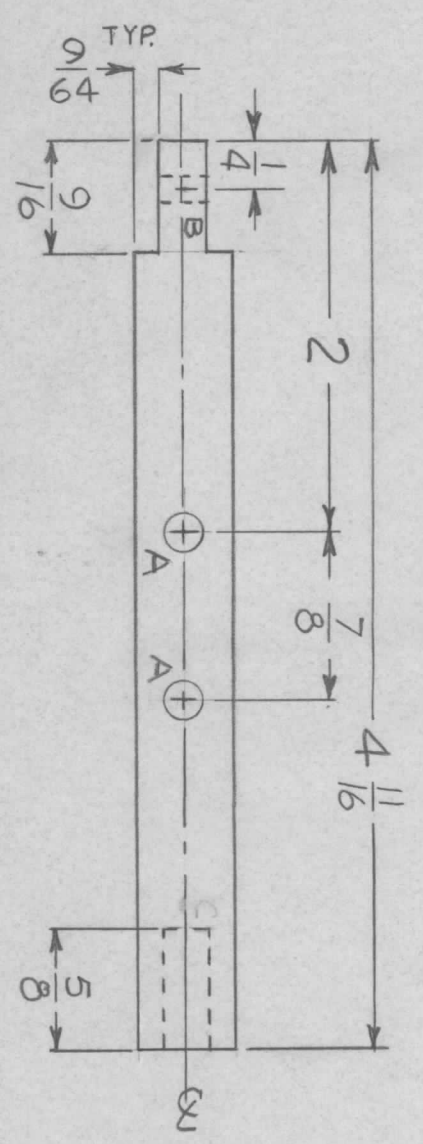
UNLESS OTHERWISE SPECIFIED
 DIMENSIONS ARE IN INCHES
 AND INCLUDE CHEMICALLY APPLIED
 OR PLATED FINISHES

FINAL APPROVAL	DATE
F.S. EFM	4/7/68
Mech. Des. AP	4/2/68
Elect. Des.	
Checked SG	4/1/68
Drawn SW	10/22/67

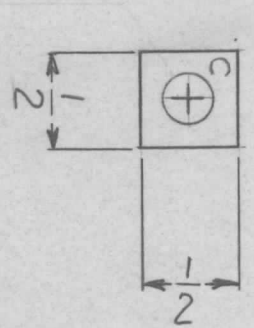
SIZE	CODE IDENT. NO.	DWG NO.	ISSUE
B	82679	PM1345	A

SCALE 1:1 SHEET OF

REVISIONS							
ZONE	LTR	DESCRIPTION	DATE	E.M.N. NO	DRAFT	CHKD	APPD
	X	EXP. RELEASE	1/11/68	+	MS	MS	MS
		ORIGINAL RELEASE	8/18/69				

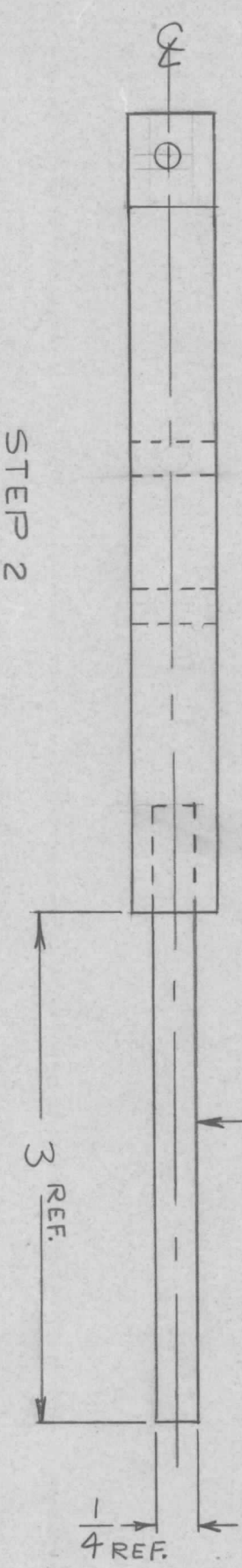


STEP 1



HOLE	DESCRIPTION	REQ
A	3/16 DIA.	2
B	9/64 DIA.	1
C	FORCE FIT IT. 1	1

① FORCE FIT AS SHOWN



STEP 2

REQ'D ITEM	PART NUMBER	DESCRIPTION	SYM.
1	PM691RF 3.625A	SHAFT 1/4 DIA.	

THE TECHNICAL MATERIEL CORP.
MAMARONECK, NEW YORK

SHAFT, SW, RELAY

QTY / UNIT	1	MODEL USED ON	GPT-40KEL	ASSY NO.	
APPLICATION		CODE	S401-451		

UNLESS OTHERWISE SPECIFIED DIMENSIONS ARE IN INCHES AND INCLUDE CHEMICALLY APPLIED OR PLATED FINISHES	DECIMALS .X ± .05 .XX ± .01 .XXX ± .005	FRACTIONS 1/64 ANGLES 0° .30'	FINISH G-10 EPOXY
---	--	--	----------------------

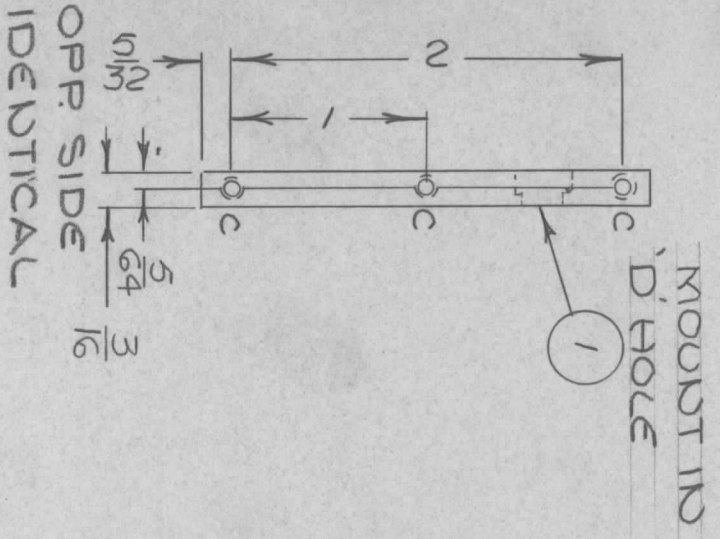
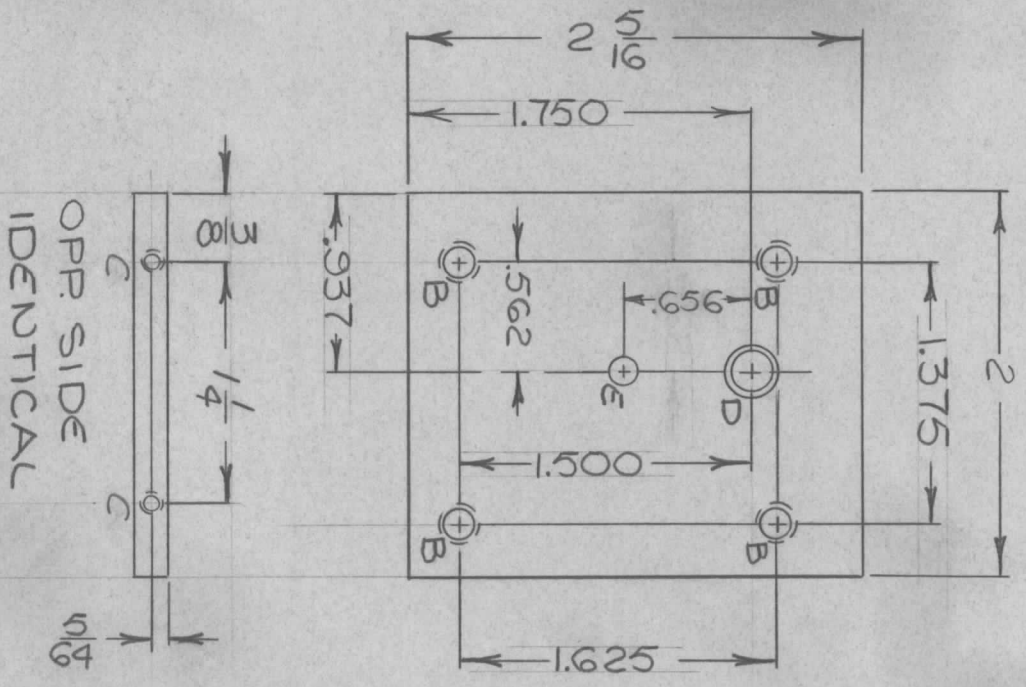
FINAL APPROVAL	DATE
<i>MS</i>	8/18/69
MECH. DES.	DATE
<i>MS</i>	
ELECT. DES.	DATE
<i>MS</i>	
CHECKED	DATE
<i>MS</i>	
DRAWN	DATE
<i>MS</i>	1-11-68

SIZE	CODE IDENT. NO.	DWG NO.	ISSUE
B	82679	PM 1348	Ø
SCALE	1:1	SHEET	OF

NOTICE TO PERSONS RECEIVING THIS DRAWING
THE TECHNICAL MATERIEL CORPORATION claims proprietary right in the material disclosed hereon. This drawing is issued in confidence for engineering information only and may not be reproduced or used to manufacture anything shown hereon without permission from THE TECHNICAL MATERIEL CORPORATION to the user. This drawing is loaned for mutual assistance and is subject to recall at any time.

REVISIONS							
ZONE	LTR	DESCRIPTION	DATE	E.M.N. NO	DRAFT	CHKD	APPD
X		EXP. RELEASE	1-23-68				
Ø		ORIG. RELEASE FOR PROD.	11/7/68	Ø			
A		REV. & UPDATED	1/3/69	19629	KH	AKS	BP

HOLES	DESCRIPTION	REQ
A		
B	NO. 36 (.1065) DRILL TAP #6-32 UC-2B (THRU)	4
C	NO. 50 (.0700) DRILL x 5/16 DP TAP #2-56 UC-2B x 3/16 DP	10
D	DRILL .202 DIA ϕ	1
E	C'BORE .2497 $\pm .0005$ x .125 DP .1250 $\pm .0005$ DIA	1



REQ'D ITEM	PART NUMBER	DESCRIPTION	SYM.
1	BB126-13	BRG, BALL, ANBL	D

LIST OF MATERIALS K3252-003-25 X1			
HOGAN			
FINAL APPROVAL <i>[Signature]</i> DATE 11/9/68			
MECH. DES. <i>[Signature]</i> DATE			
ELECT. DES. DATE			
CHECKED <i>[Signature]</i> DATE 1/23/68			
DRAWN <i>[Signature]</i> DATE			
MATERIAL 1.87THK			
ALUM. 2024-T3			
FINISH S404			
YEL. IRIDITE			

QTY / UNIT	MODEL USED ON	ASSY NO.
1	HFRR-4	
APPLICATION		
CODE	S401-451	

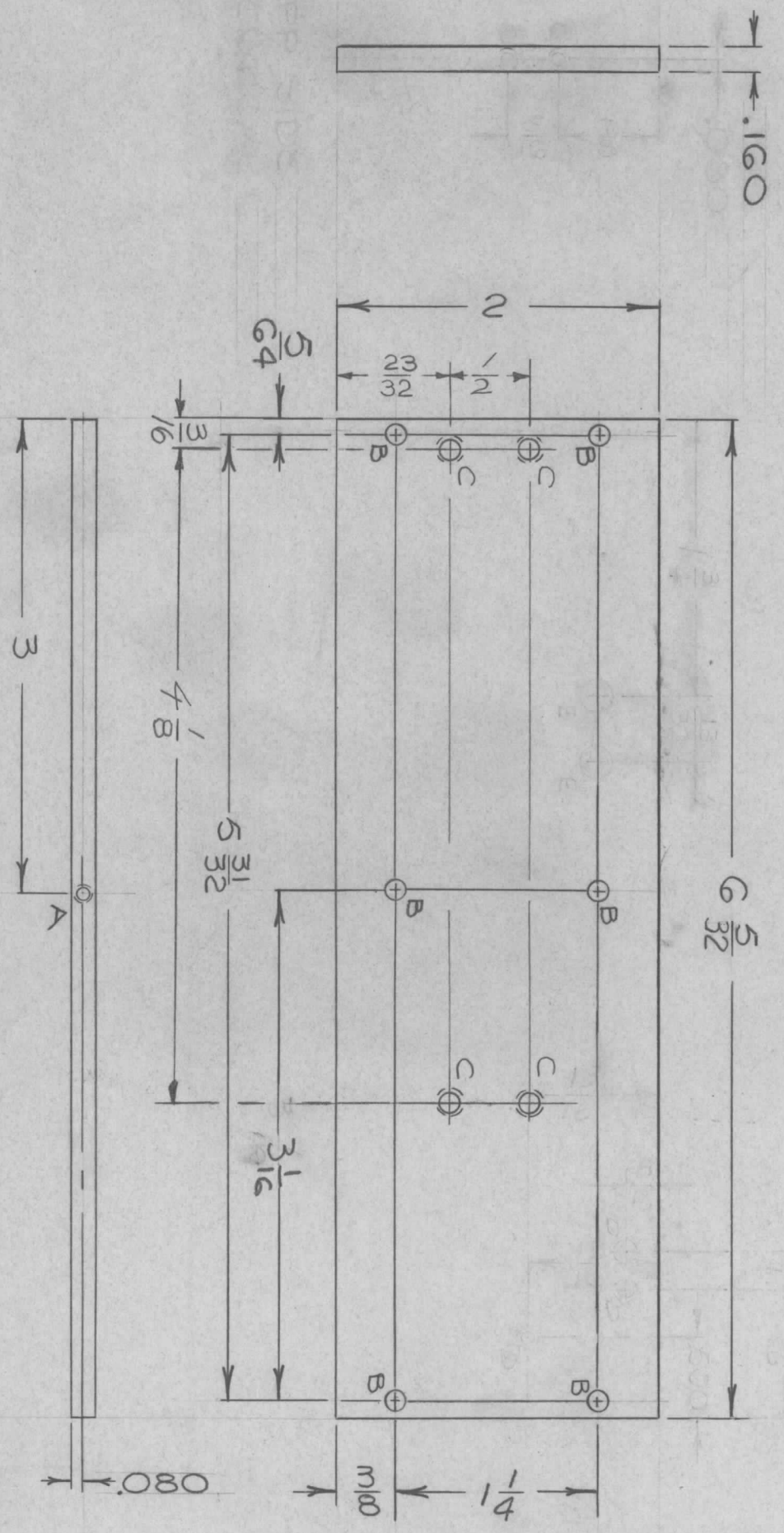
NOTICE TO PERSONS RECEIVING THIS DRAWING
 THE TECHNICAL MATERIEL CORPORATION claims proprietary right in the material disclosed hereon. This drawing is issued in confidence for engineering information only and may not be reproduced or used to manufacture anything shown hereon without permission from THE TECHNICAL MATERIEL CORPORATION to the user. This drawing is loaned for mutual assistance and is subject to recall at any time.

THE TECHNICAL MATERIEL CORP.			
MAMARONECK, NEW YORK			
BRACE, FRONT			
SIZE	CODE IDENT. NO.	DWG NO.	ISSUE
B	82679	PM1349	A
SCALE 1:1			
		SHEET	OF

REVISIONS

ZONE	LTR	DESCRIPTION	DATE	E.M.N.NO	DRAFT	CHKD	APPD
X		EXP. RELEASE	1/28/68				
X1		ADDED 2D, 1D WAS C	1/31/68				
X2		ADDED 2"E" HOLES	1/20/68				
D		ORIG. RELEASE FOR PROD.	1/1/68	Ø			
A		REV & UPDATED	3-3-69	19347	GE		
B		B" HOLE WAS .116 DIA.	11/3/69	19629	KH		

HOLE	DESCRIPTION	REQ'D
A	1D ² .50(Ø700)DR. x 5/16 DP.	2
B	TAP#2-56UNC-2B x 3/16 DP.	6
C	7/64 DIA.	4



OPP SIDE IDENTICAL

REQ'D ITEM	PART NUMBER	DESCRIPTION	SYM.
HOGAID		LIST OF MATERIAL SK 3252-003-58 X2	
THE TECHNICAL MATERIEL CORP. MAMARONECK, NEW YORK			
FINAL APPROVAL	DATE	PLATE, TOP	
MECH. DES.	DATE	SIZE	CODE IDENT. NO.
M. ZEKINA	11/7/68	B	82679
ELECT. DES.	DATE	DWG. NO.	PM 1350
CHECKED	DATE	SCALE	1:1
DATE	DATE	SHEET	OF
1-28-68			
DRAWN		ISSUE	B

QTY / UNIT	MODEL USED ON	ASS'Y NO.
1	HERR-4	
APPLICATION		
CODE	S401-451	
NOTICE TO PERSONS RECEIVING THIS DRAWING THE TECHNICAL MATERIEL CORPORATION claims proprietary right in the material disclosed hereon. This drawing is issued in confidence for engineering information only and may not be reproduced or used to manufacture anything shown hereon without permission from THE TECHNICAL MATERIEL CORPORATION to the user. This drawing is loaned for mutual assistance and is subject to recall at any time.		

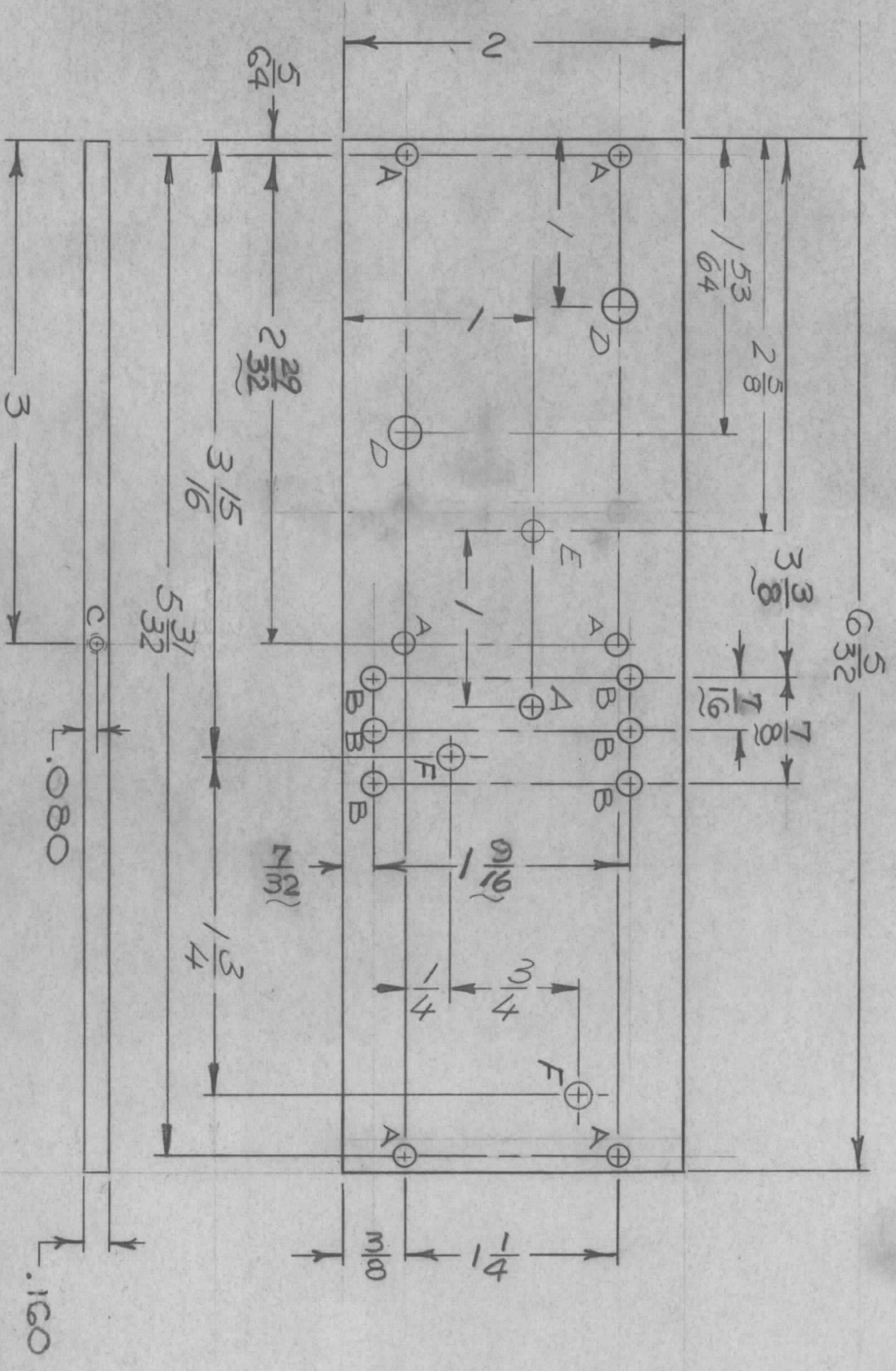
UNLESS OTHERWISE SPECIFIED DIMENSIONS ARE IN INCHES AND INCLUDE CHEMICALLY APPLIED OR PLATED FINISHES

DECIMALS: X ± .05 TOLS. 1/64
 .XX ± .01 ANGLES 0° - 30'
 .XXX ± .005

MATERIAL: 160THK
 AUCM. 2024-T3
 FINISH: S404
 YEC. IRIDITE

REVISIONS						
ZONE	LTR	DESCRIPTION	DATE	E.M.N. NO.	DRAFT	CHKD
	X	EXP. RELEASE	1/8-68			
	Ø	ORIG. RELEASE FOR PROD	11/7/68	Ø		
	A	REV & UPDATED	2/29/68	19347	GE	
	B	"E" HOLE ADDED	5/3/69	19417	GE	
	C	RELOCATE ONE "D" HL.	7/5/69	19508	GE	
	D	"A" HOLE ADDED	9/4/69	19571	GE	
	E	"A" HOLE WAS. 1/8 DIA	11/3/69	19629	GE	
	F	"F" HOLES ADD.	3/12/70	19776	GE	

HOLE	DESCR	REQ'D
A	7/64 DIA	7
B	7/32 DIA	6
C	NO. 50 (.0700) DR. x 3/8 LG TAP # 2-56 UNC-2B x 1/4 DR. (2 REQ'D)	
D	3/16 DIA.	2
E	5/32 DIA.	1
F	9/64 DIA.	2



OPPOSITE SIDE SAME

QTY / UNIT	1	MODEL USED ON	HERR-4	ASS'Y NO.	40128
APPLICATION		CODE	A	S401-451	

UNLESS OTHERWISE SPECIFIED DIMENSIONS ARE IN INCHES AND INCLUDE CHEMICALLY APPLIED OR PLATED FINISHES	FRACTIONS	1/64
DECIMALS	TOLS.	ANGLES
.X ± .05		0° - 30'
.XX ± .01		
.XXX ± .005		

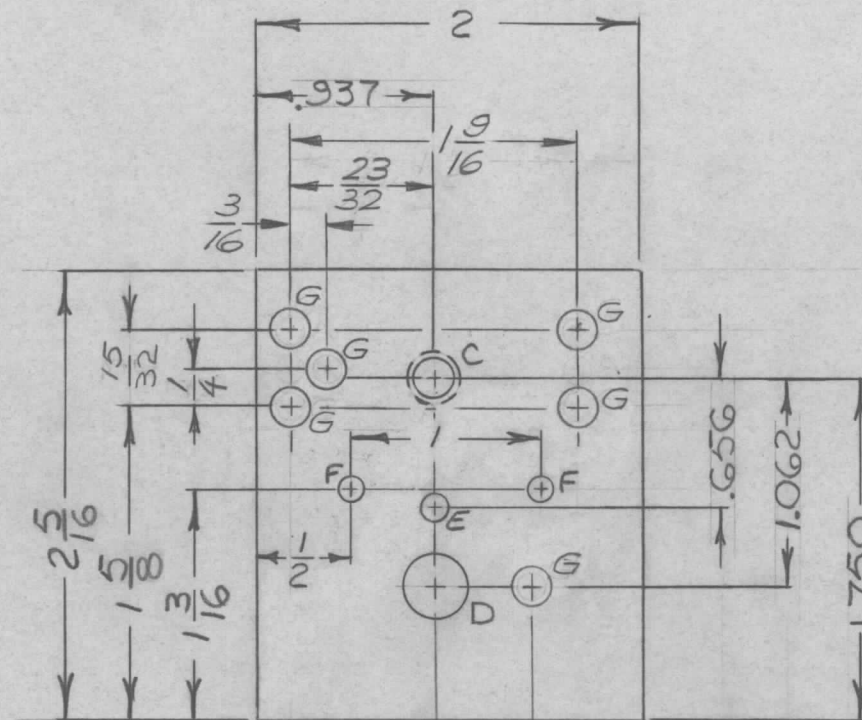
FINISH	S404
ALUMINUM	2024-T3
MATERIAL	.160 THK
YEL. IRIDITE	

REQ'D ITEM	PART NUMBER	DESCRIPTION	SYM.
HOGAN		LIST OF MATERIALS K 3252-003-28X2	
THE TECHNICAL MATERIEL CORP. MAMARONECK, NEW YORK			
SIZE	CODE IDENT. NO.	DWG NO.	ISSUE
B	82679	PM1351	F
SCALE	W.T.S	SHEET	OF

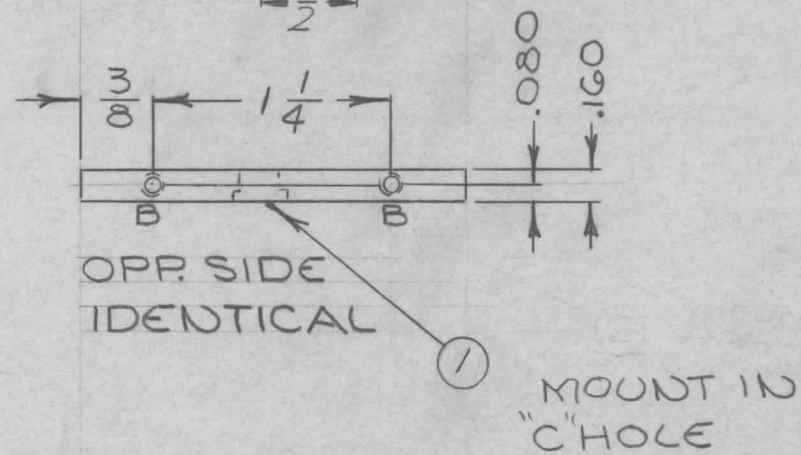
NOTICE TO PERSONS RECEIVING THIS DRAWING
THE TECHNICAL MATERIEL CORPORATION claims proprietary right in the material disclosed hereon. This drawing is issued in confidence for engineering information only and may not be reproduced or used to manufacture anything shown hereon without permission from THE TECHNICAL MATERIEL CORPORATION to the user. This drawing is loaned for mutual assistance and is subject to recall at any time.

REVISIONS

ZONE	LTR	DESCRIPTION	DATE	E.M.N.NO	DRAFT	CHKD	APPD
	X	EXP. RELEASE	1-23-68				
	Ø	ORIG. RELEASE FOR PROD	11/7/68	Ø	CV		file
	A	REV & UPDATED	2-28-69	19347	GE	H	OP RD
	B	REV. & UPDATED	10/10/69	19607	K	ND	OP RD



HOLES	DESCRIPTION	REQ
B	NO. 50 (.070) DR. 3/16 LG TAP #2-56 NC-2B x 3/16 DP	4
C	DRILL .202 DIA Ø C'BORE .2497 ± .0003 x .125 DP	1
D	.3125 ± .0005 DIA	1
E	.1250 ± .0005 DIA	1
F	7/64 DIA	2
G	7/32 DIA	6



REQ'D	ITEM	PART NUMBER	DESCRIPTION	SYM.
1	1	BB126-13	BRG., BALL, ANNL	C

HOGAN LIST OF MATERIALS K3252-003-26X2

QTY / UNIT	MODEL USED ON	ASS'Y NO.
1	HERR-4	

APPLICATION

CODE	S401-451
------	----------

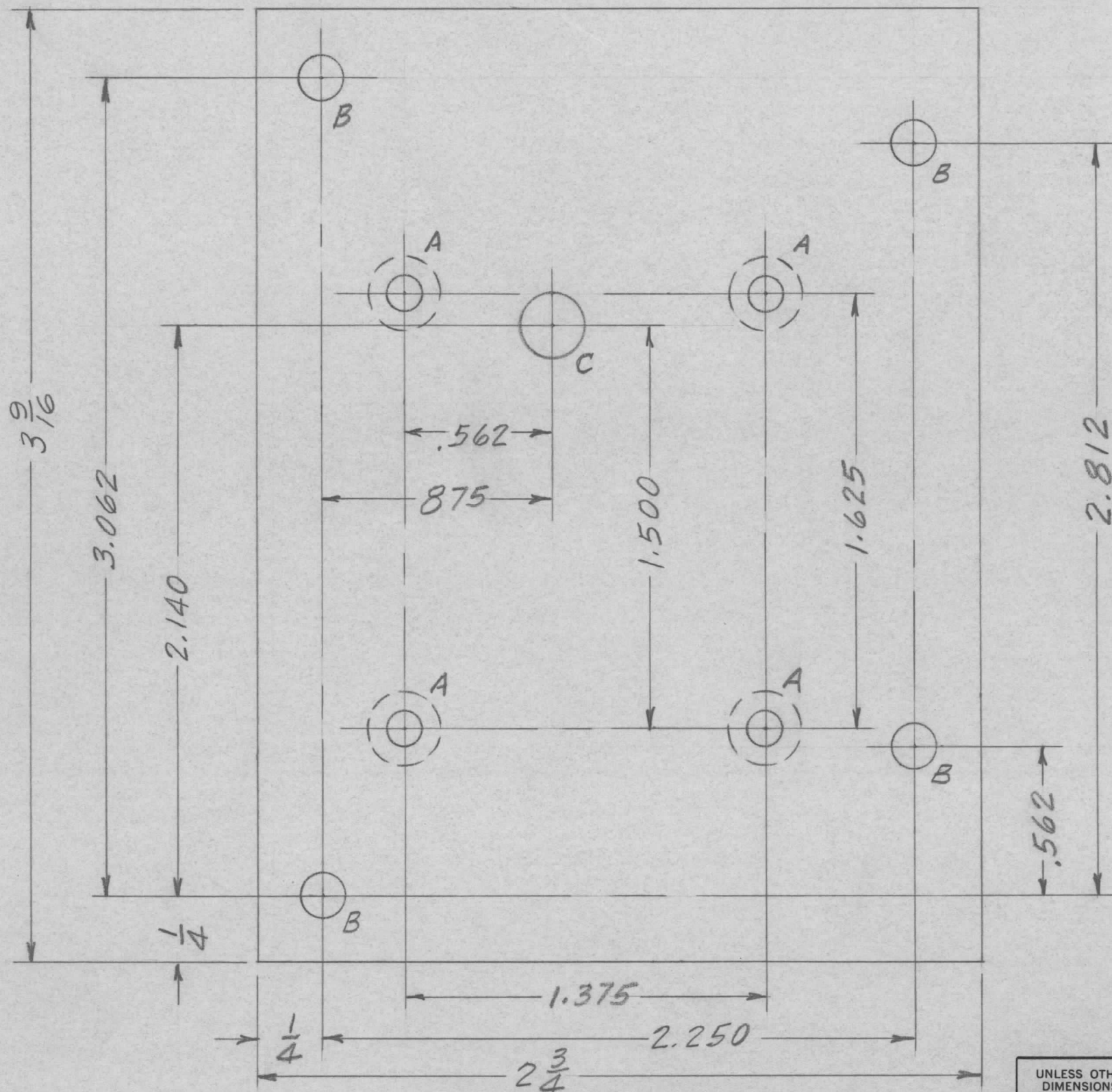
NOTICE TO PERSONS RECEIVING THIS DRAWING
 THE TECHNICAL MATERIEL CORPORATION claims proprietary right in the material disclosed hereon. This drawing is issued in confidence for engineering information only and may not be reproduced or used to manufacture anything shown hereon without permission from THE TECHNICAL MATERIEL CORPORATION to the user. This drawing is loaned for mutual assistance and is subject to recall at any time.

UNLESS OTHERWISE SPECIFIED DIMENSIONS ARE IN INCHES AND INCLUDE CHEMICALLY APPLIED OR PLATED FINISHES	FINAL APPROVAL M. ZEITENA	DATE 11/7/68
DECIMALS .X ± .05 .XX ± .01 .XXX ± .005	FRACTIONS 1/64 ANGLES 0° -30'	ELECT. DES. DATE
MATERIAL 160 THK. ALUM. 2024-T3	CHECKED SG	DATE 1/29/68
FINISH S404 YEL. IRIDITE	DRAWN K. K. K.	DATE 1-23-68

THE TECHNICAL MATERIEL CORP. MAMARONECK, NEW YORK			
BRACE, MIDDLE			
SIZE	CODE IDENT. NO.	DWG NO.	ISSUE
B	82679	PM1352	B
SCALE 1:1		SHEET OF	

REVISIONS

ZONE	LTR	DESCRIPTION	DATE	E.M.N.NO	DRAFT	CHKD	APPD
	A	REV COMPLETELY	3.3.69	19347	GE	JL	OP



HOLE	DESCRIPTION	REQ
A	1/4 DIA. & 82° C'SINK TO .284 DIA	4
B	11/64 DIA	4
C	1/4 DIA	1

QTY / UNIT	HFRR-4	ASS'Y NO.
APPLICATION		
CODE		

NOTICE TO PERSONS RECEIVING THIS DRAWING
 THE TECHNICAL MATERIEL CORPORATION claims proprietary right in the material disclosed hereon. This drawing is issued in confidence for engineering information only and may not be reproduced or used to manufacture anything shown hereon without permission from THE TECHNICAL MATERIEL CORPORATION to the user. This drawing is loaned for mutual assistance and is subject to recall at any time.

UNLESS OTHERWISE SPECIFIED
 DIMENSIONS ARE IN INCHES
 AND INCLUDE CHEMICALLY APPLIED
 OR PLATED FINISHES

DECIMALS FRACTIONS
 .X ± .05 1/64
 .XX ± .01 TOLS. ANGLES
 .XXX ± .005 0° -30'

MATERIAL .125 THICK
 ALUM. 2024T3

FINISH 5404
 YEL. IRIDITE

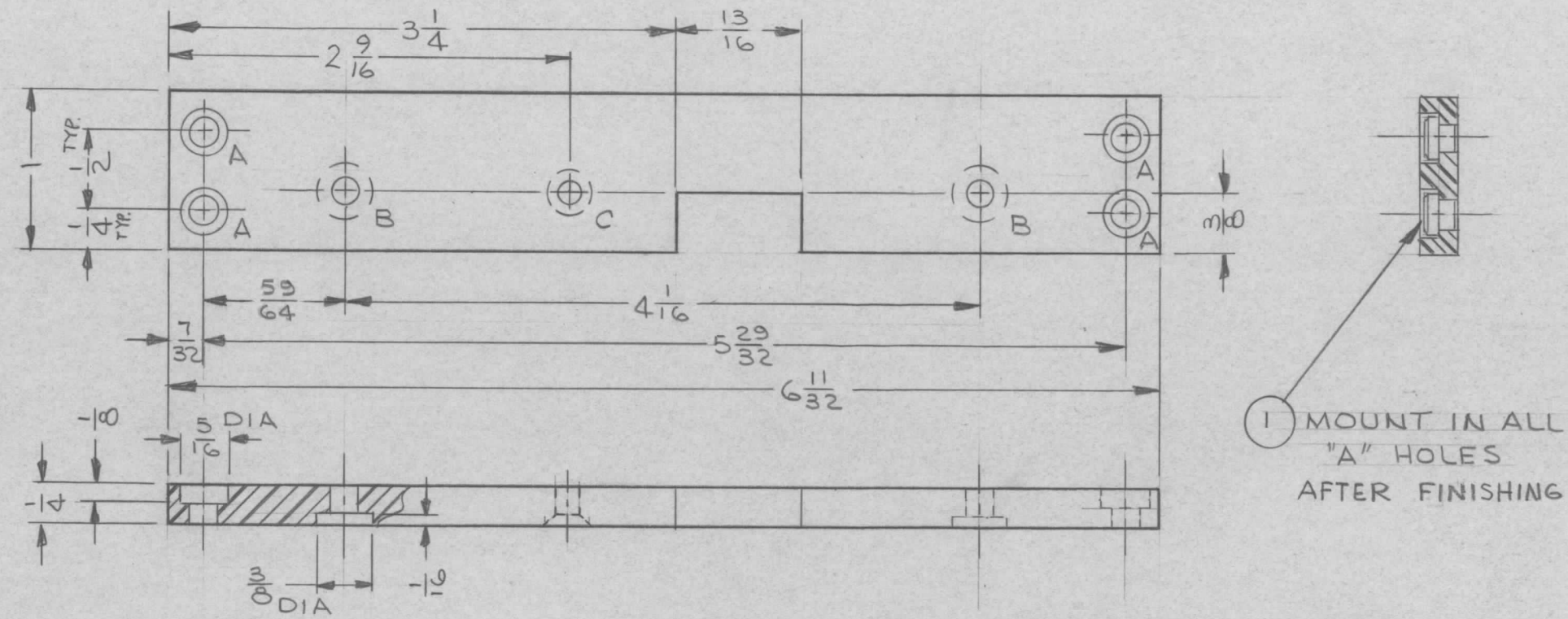
REQ'D	ITEM	PART NUMBER	DESCRIPTION	SYM.
			LIST OF MATERIAL SK3252-X2	
			THE TECHNICAL MATERIEL CORP. MAMARONECK, NEW YORK	
			BASE	
			SIZE B	
			CODE IDENT. NO. 82679	
			DWG NO. PM1354	
			ISSUE A	
			SCALE	
			SHEET	OF

REVISIONS						
ZONE	LTR	DESCRIPTION	DATE	E.M.N.NO	DRAFT	CHKD APPD
	X	EXP. RELEASE	11/17/67	+	JL	<i>[Signature]</i>
	XI	ADDED 1' HOLE	1.31.68		W2.	<i>[Signature]</i>
	Ø	ORIG. RELEASE FOR PROD	11-7-68	Ø	R.G.	<i>[Signature]</i>



QTY / UNIT	MODEL USED ON	ASS'Y NO.	DECIMALS	FRACTIONS	ELECT. DES.	DATE	SIZE	CODE IDENT. NO.	DWG NO.	ISSUE
1	HFRR-4		.X ± .05	1/64		11/17/67	B	82679	PM1360	Ø
APPLICATION			.XX ± .01	TOLS. ANGLES	CHECKED	1/31/68	SHAFT, LOCK-TUNER			
CODE A 5401-451			.XXX ± .005	0° .30'	DRAWN	11/17/67	SCALE 1:1 SHEET OF			
NOTICE TO PERSONS RECEIVING THIS DRAWING THE TECHNICAL MATERIEL CORPORATION claims proprietary right in the material disclosed hereon. This drawing is issued in confidence for engineering information only and may not be reproduced or used to manufacture anything shown hereon without permission from THE TECHNICAL MATERIEL CORPORATION to the user. This drawing is loaned for mutual assistance and is subject to recall at any time.			UNLESS OTHERWISE SPECIFIED DIMENSIONS ARE IN INCHES AND INCLUDE CHEMICALLY APPLIED OR PLATED FINISHES		FINAL APPROVAL <i>[Signature]</i> 11/17/67 MECH. DES. M ZETENA		THE TECHNICAL MATERIEL CORP. MAMARONECK, NEW YORK			
			MATERIAL STAINLESS STEEL TYPE 303 FINISH S104 PASSIVATE		REQ'D ITEM PART NUMBER DESCRIPTION SYM. HOGAN (ZETENA) LIST OF MATERIAL SK3252-003-51					

REVISIONS						
ZONE	LTR	DESCRIPTION	DATE	E.M.N.NO	DRAFT	CHKD APPD
	X	EXP. RELEASE	8-31-67	+	JL	<i>[Signature]</i>
	X1	ADDED 1" C" HOLE	9-20-68		<i>[Signature]</i>	<i>[Signature]</i>
	Ø	ORIG. RELEASE FOR PROD	11-7-68	Ø	R.G.	<i>[Signature]</i>



HOLE LEGEND		
HOLE	DESCRIPTION	REQ
A	.191-.194 DIA THRU & C'BORE 5/16 DIA X 1/8 DEEP	4
B	11/64 DIA THRU & C'BORE 3/8 DIA X 1/16 DEEP	2
C	.144 DIA. Ø C'SINK 82° TO .284 DIA. (#6-32 FHMS)	1

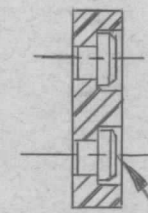
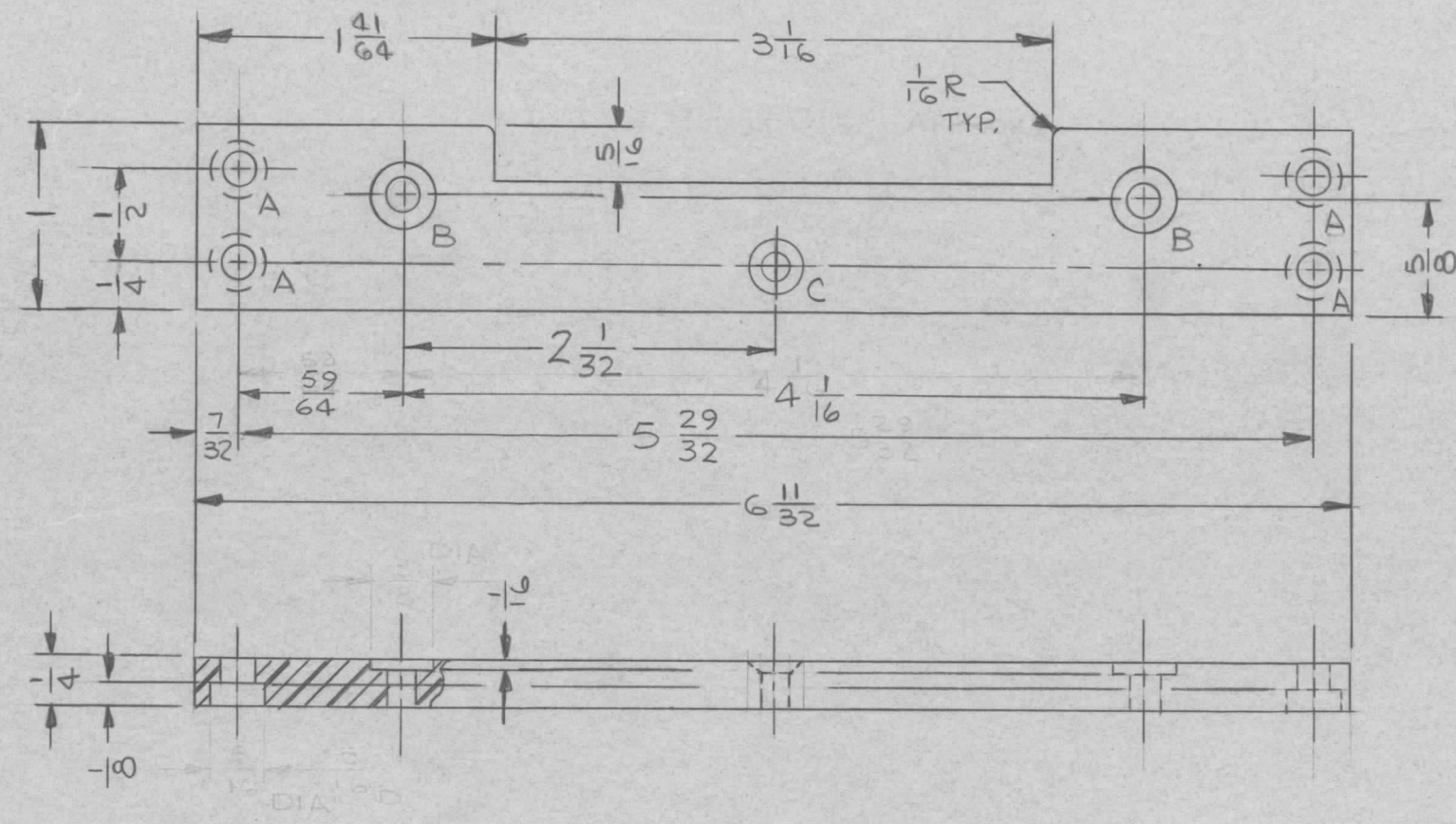
TMC P/N	DESCRIPTION
PM1361-1	AS SHOWN
PM1361-2	OPPOSITE HAND WITHOUT 13/16 X 3/8 DEEP CUTOUT

PM1361-1	1	HFRR-4	
PM1361-2	2	HFRR-4	
QTY / UNIT MODEL USED ON ASS'Y NO.			
APPLICATION			
CODE	S 401-451		
A			

NOTICE TO PERSONS RECEIVING THIS DRAWING
 THE TECHNICAL MATERIEL CORPORATION claims proprietary right in the material disclosed hereon. This drawing is issued in confidence for engineering information only and may not be reproduced or used to manufacture anything shown hereon without permission from THE TECHNICAL MATERIEL CORPORATION to the user. This drawing is loaned for mutual assistance and is subject to recall at any time.

4	1	NT129-632-6	NUT, PLAIN, SPLINE	A
REQ'D ITEM	PART NUMBER	DESCRIPTION		SYM.
HOGAN(ZETENA) LIST OF MATERIAL SK3252-003-10				
THE TECHNICAL MATERIEL CORP. MAMARONECK, NEW YORK				
MTG, BRACKET-TUNER ASS'Y				
SIZE	CODE IDENT. NO.	DWG NO.	ISSUE	
B	82679	PM1361	Ø	
SCALE 1:1		SHEET OF		

REVISIONS						
ZONE	LTR	DESCRIPTION	DATE	E.M.N.NO	DRAFT	CHKD APPD
	X	EXP. RELEASE	8/31/67	+	JL	<i>[Signature]</i>
	XI	ADDED 1" HOLES	8.20.68		H.G.	<i>[Signature]</i>
	Ø	ORIG. RELEASE FOR PROD	11-7-68	Ø	R.G.	<i>[Signature]</i>



1 MOUNT IN ALL "A" HOLES AFTER FINISHING

HOLE LEGEND		
HOLE	DESCRIPTION	REQ
A	.191-.194 DIA THRU & C'BORE 5/16 DIA X 1/8 DEEP	4
B	1/16 DIA THRU & C'BORE 3/8 DIA X 1/16 DEEP	2
C	.144 DIA. & C'SINK 82° TO .284 DIA. (#6-32 FHMS)	1

REQ'D	ITEM	PART NUMBER	DESCRIPTION	SYM.
4	1	NT129-632-6	NUT, PLAIN, SPLINE	A

HOGAN (ZETENA) LIST OF MATERIAL SK 3252-003-36

1	HFRR-4	
QTY / UNIT	MODEL USED ON	ASS'Y NO.
	APPLICATION	
	CODE A	5401-451

UNLESS OTHERWISE SPECIFIED DIMENSIONS ARE IN INCHES AND INCLUDE CHEMICALLY APPLIED OR PLATED FINISHES		FINAL APPROVAL <i>[Signature]</i> DATE 11/9/67
DECIMALS .X ± .05 .XX ± .01 .XXX ± .005	FRACTIONS 1/64 ANGLES 0° .30'	MECH. DES. M ZEJENA
MATERIAL 1/4 THICK XI" WIDE ALUMINUM 2024-T3		ELECT. DES. DATE
FINISH YELLOW IRIDITE 5404		CHECKED <i>[Signature]</i> DATE 8/20/68
		DRAWN J.L. DATE 8/31/67

THE TECHNICAL MATERIEL CORP. MAMARONECK, NEW YORK			
MTG, BRACKET-TUNER ASSY			
SIZE B	CODE IDENT. NO. 82679	DWG NO. PM 1362	ISSUE Ø
SCALE 1:1	SHEET OF		

NOTICE TO PERSONS RECEIVING THIS DRAWING
 THE TECHNICAL MATERIEL CORPORATION claims proprietary right in the material disclosed hereon. This drawing is issued in confidence for engineering information only and may not be reproduced or used to manufacture anything shown hereon without permission from THE TECHNICAL MATERIEL CORPORATION to the user. This drawing is loaned for mutual assistance and is subject to recall at any time.

REVISIONS						
ZONE	LTR	DESCRIPTION	DATE	E.M.N.NO	DRAFT	CHKD APPD
	X	EXP. RELEASE	8/31/67	+	DAC.	<i>[Signature]</i>
	Ø	ORIG. RELEASE FOR PROD	11/7/68	Ø	W	<i>[Signature]</i>

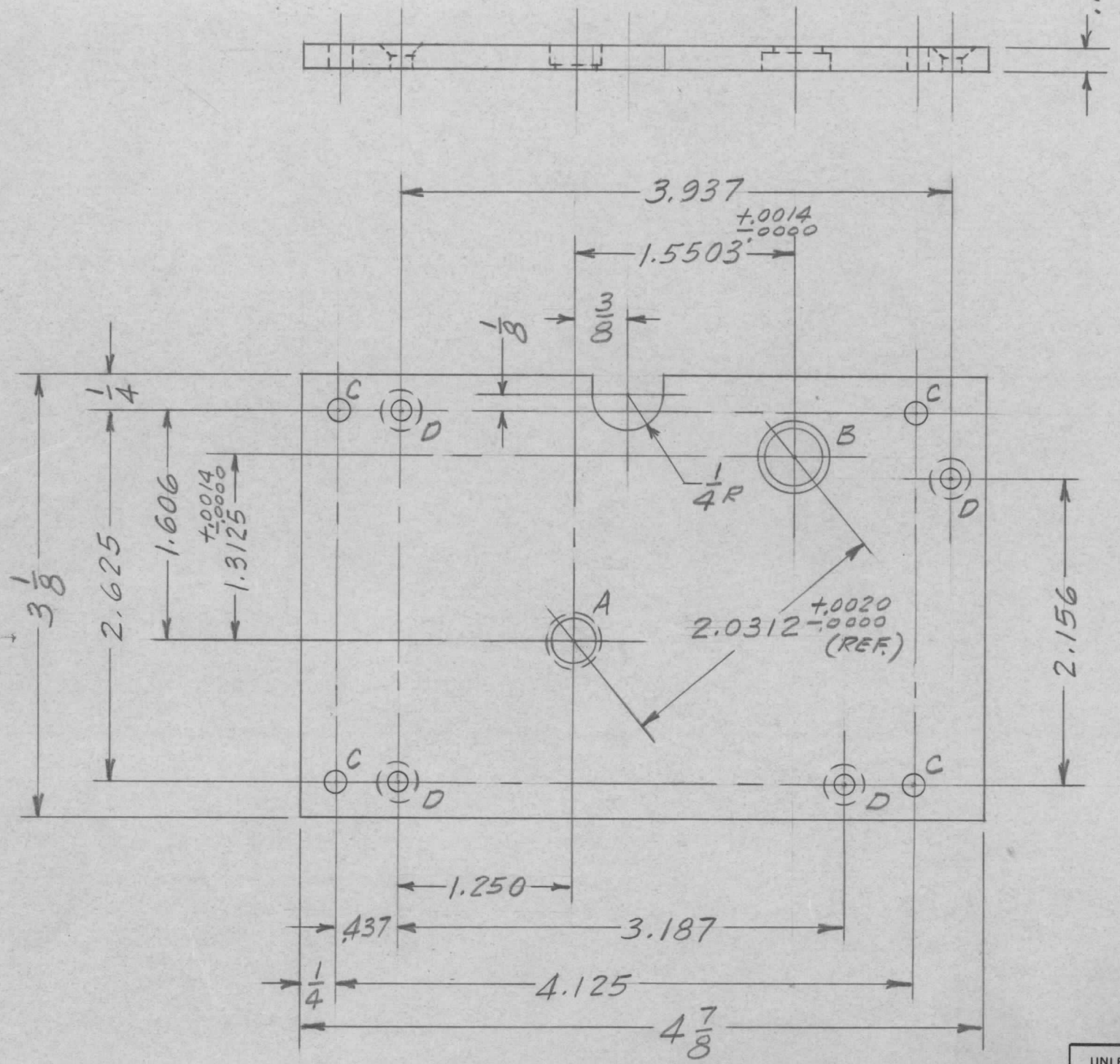
HOLE LEGEND

A - .312 DR. THRU & C'BORE
.3747-.3750 DIA. x .125 DEEP ON FAR SIDE

B - .406 DR. THRU & C'BORE
.4997-.5000 DIA. x .125 DEEP

C - 1/64 DIA. - 4 REQ.

D - .144 DR. & 82° C'SINK
TO .284 DIA. FACE. ON FAR SIDE - 4 REQ.



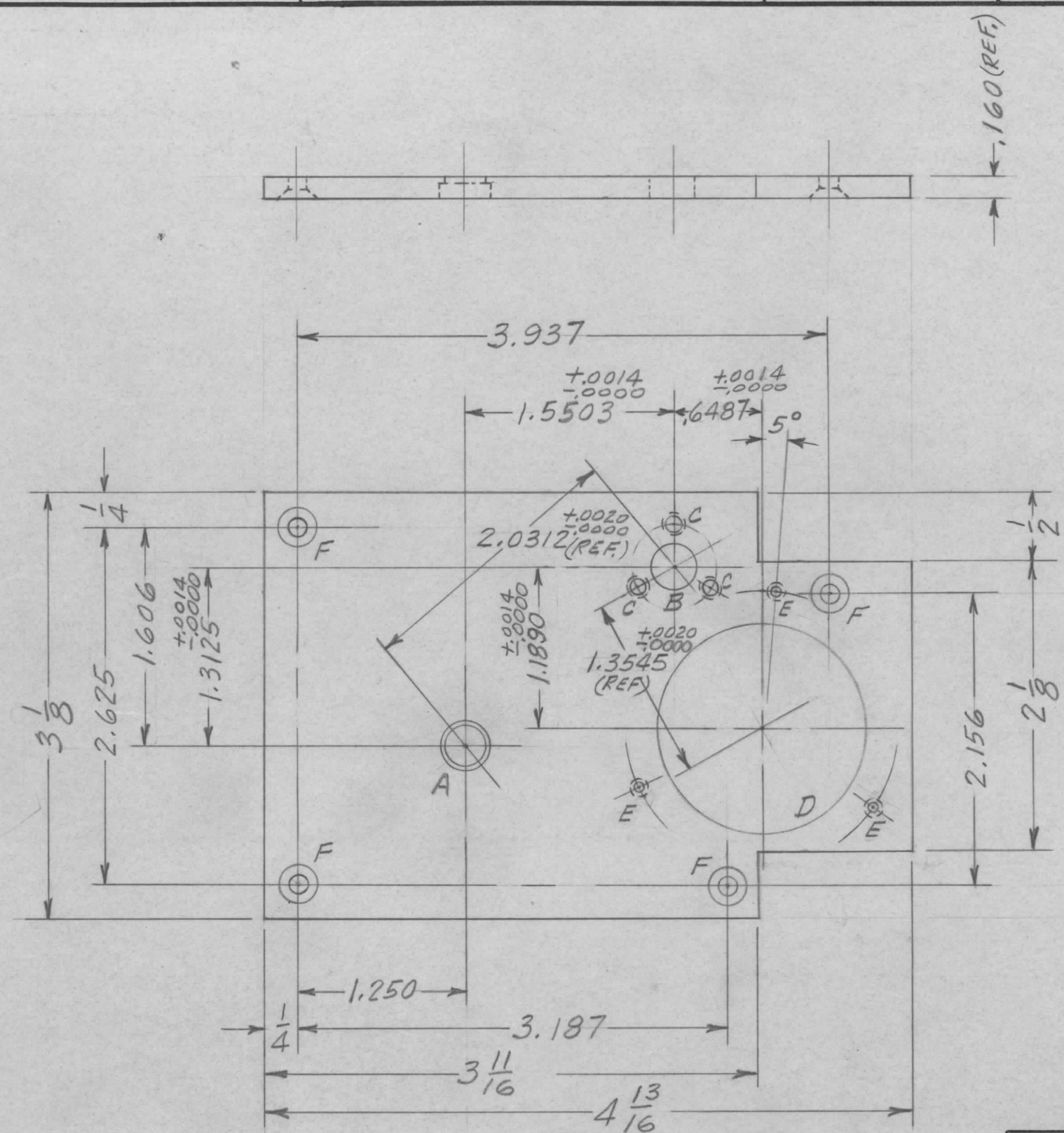
1	HFRR-4	
QTY / UNIT	MODEL USED ON	ASS'Y NO.
APPLICATION		
CODE	5401-451	
A		

NOTICE TO PERSONS RECEIVING THIS DRAWING
THE TECHNICAL MATERIEL CORPORATION claims proprietary right in the material disclosed hereon. This drawing is issued in confidence for engineering information only and may not be reproduced or used to manufacture anything shown hereon without permission from THE TECHNICAL MATERIEL CORPORATION to the user. This drawing is loaned for mutual assistance and is subject to recall at any time.

UNLESS OTHERWISE SPECIFIED DIMENSIONS ARE IN INCHES AND INCLUDE CHEMICALLY APPLIED OR PLATED FINISHES	
DECIMALS .X ± .05 .XX ± .01 .XXX ± .005	FRACTIONS TOLS. 1/64 ANGLES 0° -30'
MATERIAL .160 THICK ALUMINUM 2024-T3	
FINISH S-404 YEL. IRIDITE	

REQ'D	ITEM	PART NUMBER	DESCRIPTION	SYM.
			HOGAN (ZETENA) LIST OF MATERIAL SK 3252-003-33	
FINAL APPROVAL		DATE	THE TECHNICAL MATERIEL CORP.	
<i>[Signature]</i>		11/7/68	MAMARONECK, NEW YORK	
MECH. DES.		DATE	REAR GEAR PLATE	
M. ZETENA				
ELECT. DES.		DATE		
CHECKED		DATE		
SG		8/31/67		
DRAWN		DATE		
D.A.C.		8/31/67		
SIZE	CODE IDENT. NO.	DWG NO.	ISSUE	
B	82679	PM 1363	Ø	
SCALE 1:1	SHEET		OF	

REVISIONS						
ZONE	LTR	DESCRIPTION	DATE	E.M.N.NO	DRAFT	CHKD APPD
	X1	"C" HOLE WAS .120 DIA	12/29/67		JL	
	Ø	ORIG. RELEASE FOR PROD	11/7/68	Ø	CU	
	A	DIM. 1.1890 WAS 1.1875 & 1.3545 WAS 1.3541	11/3/69	19629	KH	RD OP



HOLE LEGEND

A - .312 DR. THRU & C'BORE
.3747-.3750 DIA. X .125 DEEP

B - .3750-.3755 DIA. THRU

C - .120 DIA. & C'SINK 82° TO .230 DIA
3 HOLES 120° APART ON .625 DIA.

D - 1.5625-1.5630 DIA. THRU

E - DR. & TAP FOR 4-40 SCR.
3 HOLES 120° APART ON 2.015 DIA.

F - .144 DR & 82° C'SINK
TO .284 DIA. (4 REQ)

1	HFRR-4	
QTY / UNIT	MODEL USED ON	ASS'Y NO.
	APPLICATION	
	CODE A	S401-451

NOTICE TO PERSONS RECEIVING THIS DRAWING
THE TECHNICAL MATERIEL CORPORATION claims proprietary right in the material disclosed hereon. This drawing is issued in confidence for engineering information only and may not be reproduced or used to manufacture anything shown hereon without permission from THE TECHNICAL MATERIEL CORPORATION to the user. This drawing is loaned for mutual assistance and is subject to recall at any time.

UNLESS OTHERWISE SPECIFIED DIMENSIONS ARE IN INCHES AND INCLUDE CHEMICALLY APPLIED OR PLATED FINISHES

DECIMALS .X ± .05
.XX ± .01
.XXX ± .005

FRACTIONS 1/64
TOLS. ANGLES 0° .30'

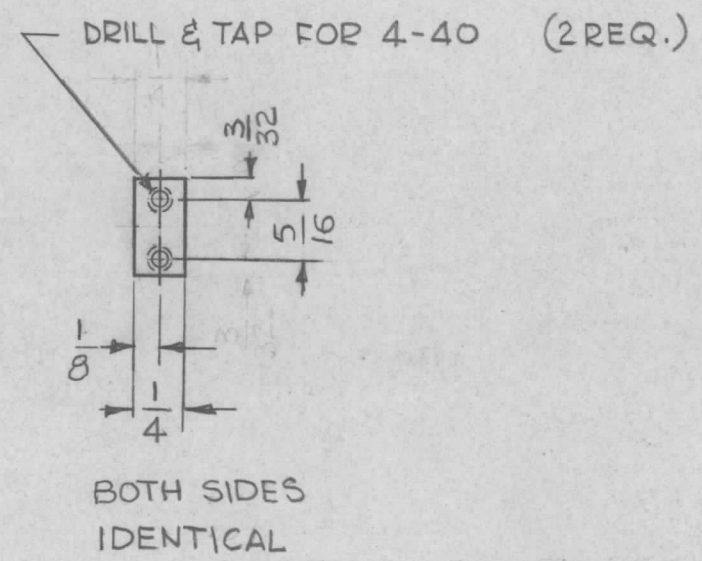
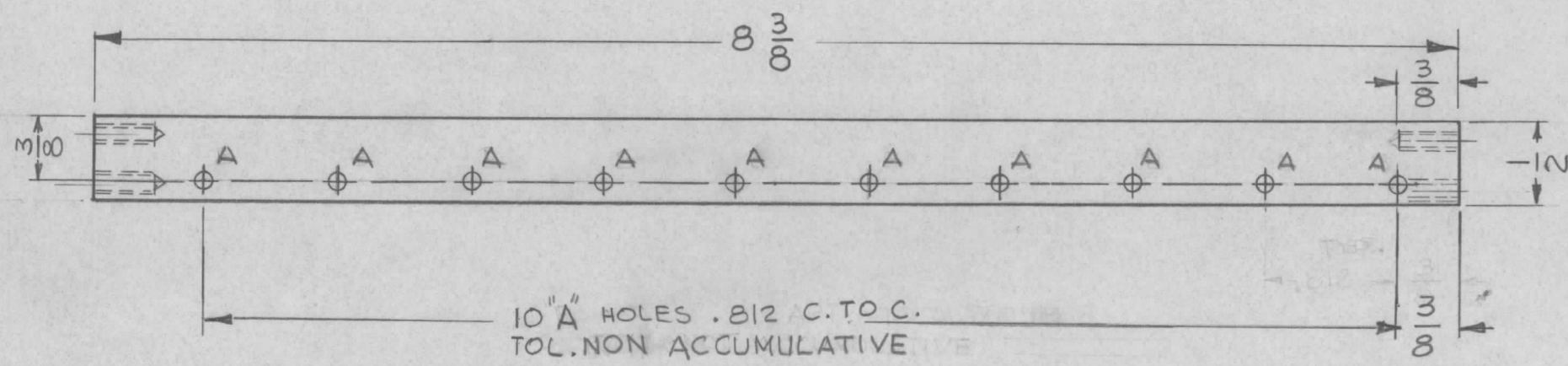
MATERIAL .160 THICK ALUMINUM 2024-T3

FINISH S404 YEL. IRIDITE

REQ'D	ITEM	PART NUMBER	DESCRIPTION	SYM.
		HOGAN(ZETENA)	LIST OF MATERIAL	SK3252-003-32
FINAL APPROVAL		DATE	THE TECHNICAL MATERIEL CORP. MAMARONECK, NEW YORK	
MECH. DES. M. ZETENA		DATE		
ELECT. DES.		DATE		
CHECKED SG		DATE 12/3/67	FRONT GEAR PLATE	
DRAWN D.A.C		DATE 8/31/67		
SIZE	CODE IDENT. NO.	DWG NO.	ISSUE	
B	82679	PM1364	A	
SCALE 1:1		SHEET		OF

HOLE :
A - 3/32 DIA. 10REQ.

REVISIONS						
ZONE	LTR	DESCRIPTION	DATE	E.M.N.NO	DRAFT	CHKD APPD
	X	EXP. RELEASE	4-8-68		G.D.L.	J.D. J.D.
	Ø	ORIG. RELEASE	12-4-68			J.De J.D.



1	RTIH-3	
QTY / UNIT	MODEL USED ON	ASS'Y NO.
APPLICATION		
	CODE A	S401-451

NOTICE TO PERSONS RECEIVING THIS DRAWING
THE TECHNICAL MATERIEL CORPORATION claims proprietary right in the material disclosed hereon. This drawing is issued in confidence for engineering information only and may not be reproduced or used to manufacture anything shown hereon without permission from THE TECHNICAL MATERIEL CORPORATION to the user. This drawing is loaned for mutual assistance and is subject to recall at any time.

UNLESS OTHERWISE SPECIFIED DIMENSIONS ARE IN INCHES AND INCLUDE CHEMICALLY APPLIED OR PLATED FINISHES

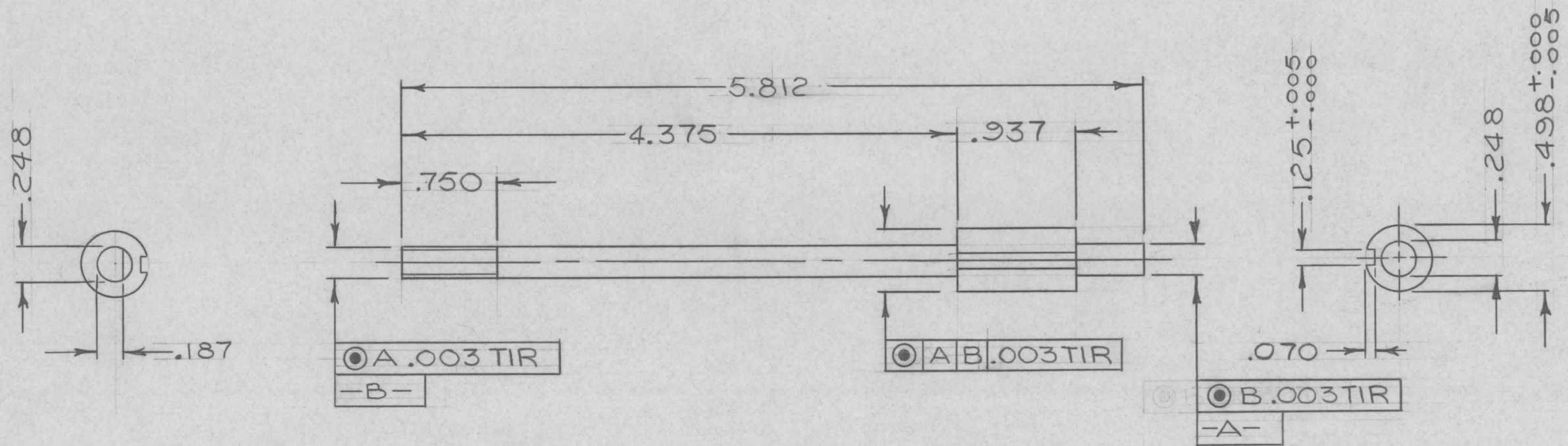
DECIMALS .X ± .05 .XX ± .01 .XXX ± .005	FRACTIONS 1/64 ANGLES 0° .30'
--	--

MATERIAL 1/4 x 1/2 ALUMINUM 2024-T3

FINISH S404 YEL IRIDITE

REQ'D	ITEM	PART NUMBER	DESCRIPTION	SYM.
S. DE MARCO LIST OF MATERIAL				
FINAL APPROVAL		DATE	THE TECHNICAL MATERIEL CORP.	
MECH. DES.		DATE	MAMARONECK, NEW YORK	
ELECT. DES.		DATE	BAR SUPPORT, PC CARD BIN	
CHECKED		DATE	(TOP CENTER SECTION)	
DRAWN		DATE	SIZE	ISSUE
			B	Ø
			CODE IDENT. NO.	DWG NO.
			82679	PM 1367
			SCALE 1:1	SHEET OF

REVISIONS						
ZONE	LTR	DESCRIPTION	DATE	E.M.N.NO	DRAFT	CHKD APPD
	X	EXP. RELEASE	5-20-68			
	Ø	ORIG. RELEASE FOR PROD.	5-29-68		R.G.	



REQ'D	ITEM	PART NUMBER	DESCRIPTION	SYM.
	F. BUDETTI LIST OF MATERIAL			

1	BCT-10KA	
QTY / UNIT	MODEL USED ON	ASS'Y NO.
APPLICATION		
	CODE	S401-451

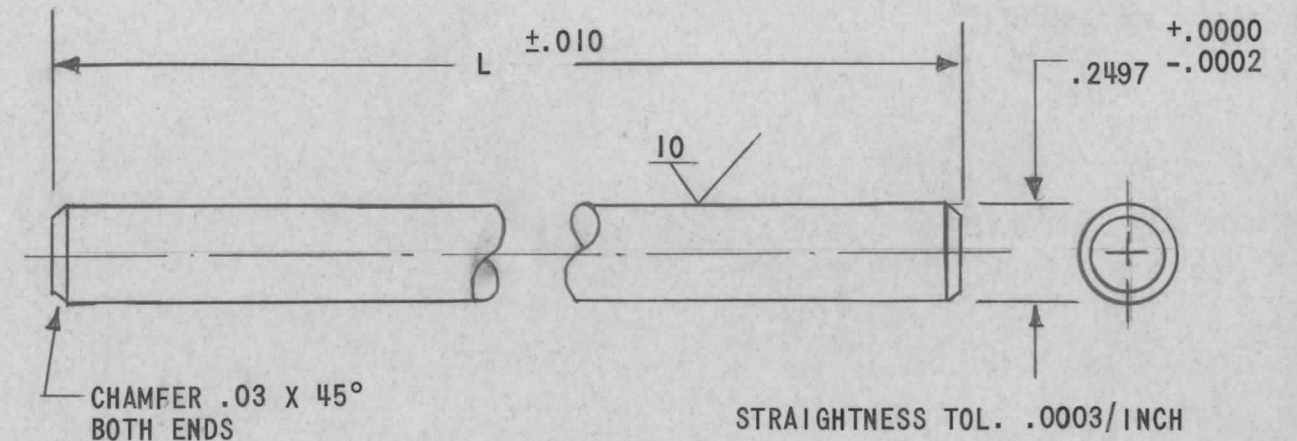
NOTICE TO PERSONS RECEIVING THIS DRAWING
 THE TECHNICAL MATERIEL CORPORATION claims proprietary right in the material disclosed hereon. This drawing is issued in confidence for engineering information only and may not be reproduced or used to manufacture anything shown hereon without permission from THE TECHNICAL MATERIEL CORPORATION to the user. This drawing is loaned for mutual assistance and is subject to recall at any time.

UNLESS OTHERWISE SPECIFIED DIMENSIONS ARE IN INCHES AND INCLUDE CHEMICALLY APPLIED OR PLATED FINISHES	FINAL APPROVAL <i>[Signature]</i> DATE 5-29-68	MECH. DES. <i>[Signature]</i> DATE 5-29-68	THE TECHNICAL MATERIEL CORP. MAMARONECK, NEW YORK	
DECIMALS .X ± .05 .XX ± .01 .XXX ± .005	FRACTIONS 1/64 ANGLES 0° .30'	ELECT. DES. <i>[Signature]</i> DATE 5-29-68	CHECKED <i>[Signature]</i> DATE 5-20-68	DRAWN <i>[Signature]</i> DATE 5-20-68
MATERIAL #303 STAINLESS ST'L	FINISH S104 PASSIVATE	SHAFT, BAND SWITCH		

SIZE	CODE IDENT. NO.	DWG NO.	ISSUE
B	82679	PM1368	Ø
SCALE 1:1		SHEET 1 OF 1	

CAT NO.	"L"	CAT NO.	"L"	CAT NO.	"L"	CAT NO.	"L"
A3-10	1.00	A3-50	5.00	A3-90	9.00	A3-130	13.00
A3-11	1.12	A3-51	5.12	A3-91	9.12	A3-131	13.12
A3-12	1.25	A3-52	5.25	A3-92	9.25	A3-132	13.25
A3-13	1.37	A3-53	5.37	A3-93	9.37	A3-133	13.37
A3-15	1.50	A3-55	5.50	A3-95	9.50	A3-135	13.50
A3-16	1.62	A3-56	5.62	A3-96	9.62	A3-136	13.62
A3-17	1.75	A3-57	5.75	A3-97	9.75	A3-137	13.75
A3-18	1.87	A3-58	5.87	A3-98	9.87	A3-138	13.87
A3-20	2.00	A3-60	6.00	A3-100	10.00	A3-140	14.00
A3-21	2.12	A3-61	6.12	A2-101	10.12	A3-141	14.12
A3-22	2.25	A3-62	6.25	A2-102	10.25	A3-142	14.25
A3-23	2.37	A3-63	6.37	A2-103	10.37	A3-143	14.37
A3-25	2.50	A3-65	6.50	A3-105	10.50	A3-145	14.50
A3-26	2.62	A3-66	6.62	A3-106	11.62	A3-146	14.62
A3-27	2.75	A3-67	6.75	A3-107	10.75	A3-147	14.75
A3-28	2.87	A3-68	6.87	A3-108	10.87	A3-148	14.87
A3-30	3.00	A3-70	7.00	A3-110	11.00	A3-150	15.00
A3-31	3.12	A3-71	7.12	A3-111	11.12	A3-151	15.12
A3-32	3.25	A3-72	7.25	A3-112	11.25	A3-152	15.25
A3-33	3.37	A3-73	7.37	A3-113	11.37	A3-153	15.37
A3-35	3.50	A3-75	7.50	A3-115	11.50	A3-155	15.50
A3-36	3.62	A3-76	7.62	A3-116	11.62	A3-156	15.62
A3-37	3.75	A3-77	7.75	A3-117	11.75	A3-157	15.75
A3-38	3.87	A3-78	7.87	A3-118	11.87	A3-158	15.87
A3-40	4.00	A3-80	8.00	A3-120	12.00	A3-160	16.00
A3-41	4.12	A3-81	8.12	A3-121	12.12	A3-161	16.12
A3-42	4.25	A3-82	8.25	A3-122	12.25	A3-162	16.25
A3-43	4.37	A3-83	8.37	A3-123	12.37	A3-163	16.27
A3-45	4.50	A3-85	8.50	A3-125	12.50	A3-165	16.50
A3-46	4.62	A3-86	8.62	A3-126	12.62	A3-166	16.62
A3-47	4.75	A3-87	8.75	A3-127	12.75	A3-167	16.75
A3-48	4.87	A3-88	8.87	A3-128	12.87	A3-168	16.87

REVISIONS							
ZONE	LTR	DESCRIPTION	DATE	E.M.N.NO	DRAFT	CHKD	APPD
	X	EXPERIMENTAL RELEASE	8/5/68			C.V.	
	Ø	ORIG. RELEASE FOR PROD	11/4/68	Ø		R.G.	



TMC PART NUMBER SHALL BE IN THE FOLLOWING FORM:

PM 1369 - 8R37
 BASIC TMC DWG. NO. L=LENGTH
 R DENOTES DECIMAL POINT
 (SEE CHART)

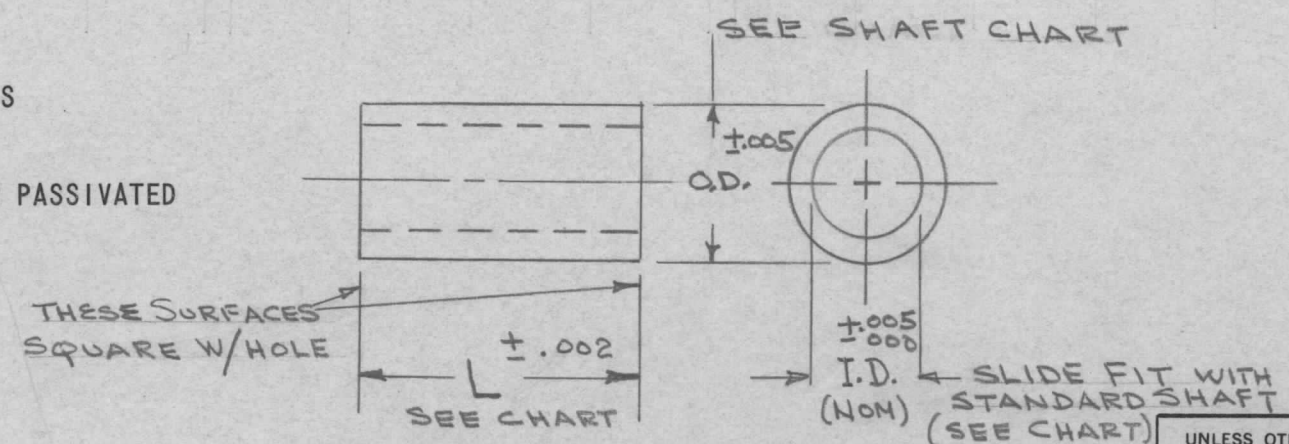
HFRR-4		
QTY / UNIT	MODEL USED ON	ASS'Y NO.
APPLICATION		
CODE		
NOTICE TO PERSONS RECEIVING THIS DRAWING THE TECHNICAL MATERIEL CORPORATION claims proprietary right in the material disclosed hereon. This drawing is issued in confidence for engineering information only and may not be reproduced or used to manufacture anything shown hereon without permission from THE TECHNICAL MATERIEL CORPORATION to the user. This drawing is loaned for mutual assistance and is subject to recall at any time.		

REQ'D	ITEM	PART NUMBER	DESCRIPTION	SYM.
S. DeMARCO LIST OF MATERIAL				
UNLESS OTHERWISE SPECIFIED DIMENSIONS ARE IN INCHES AND INCLUDE CHEMICALLY APPLIED OR PLATED FINISHES		FINAL APPROVAL	DATE	THE TECHNICAL MATERIEL CORP. MAMARONECK, NEW YORK SHAFT, PRECISION GROUND (1/4 DIA)
		MECH. DES.	DATE	
		ELECT. DES.	DATE	
		CHECKED	DATE	
DECIMALS .X ± .05 .XX ± .01 .XXX ± .005		FRACTIONS 1/64 ANGLES 0° -30'		
MATERIAL 303		DRAWN	DATE	
FINISH CLEAR PASSIVATE		S401-350 (A3 SERIES)		
SIZE B	CODE IDENT. NO. 82679	DWG NO. PM 1369	ISSUE Ø	
SCALE	SHEET		OF	

"L" LENGTH	1/8 SHAFT SPACER				3/16 SHAFT SPACER				1/4 SHAFT SPACER			
	STAINLESS		ALUMINUM		STAINLESS		ALUMINUM		STAINLESS		ALUMINUM	
	TMC CODE	CAT #	TMC CODE	CAT #	TMC CODE	CAT #	TMC CODE	CAT #	TMC CODE	CAT #	TMC CODE	CAT #
.004	041	B4-1			061	B6-1			081	B8-1		
.006	042	-2			062	-2			082	-2		
.008	043	-3			063	-3			083	-3		
.010	044	-4			064	-4			084	-4		
.012	045	-5			065	-5			085	-5		
.014	046	-6			066	-6			086	-6		
.016	047	-7			067	-7			087	-7		
.031	048	-8	058	B5-8	068	-8	078	B7-8	088	-8	098	B9-8
.063	049	-9	059	-9	069	-9	079	-9	089	-9	099	-9
.094	410	-10	510	-10	610	-10	710	-10	810	-10	910	-10
.125	411	-11	511	-11	611	-11	711	-11	811	-11	911	-11
.188	412	-12	512	-12	612	-12	712	-12	812	-12	912	-12
.250	413	-13	513	-13	613	-13	713	-13	813	-13	913	-13
.375	414	-14	514	-14	614	-14	714	-14	814	-14	914	-14
.500	415	-15	515	-15	615	-15	715	-15	815	-15	915	-15

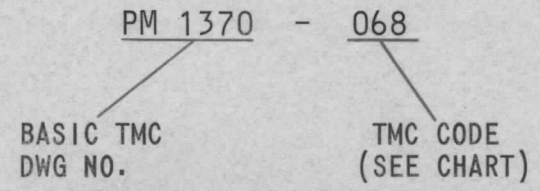
REVISIONS						
ZONE	LTR	DESCRIPTION	DATE	E.M.N.NO	DRAFT	CHKD APPD
	X	EXPERIMENTAL RELEASE	9/16/68		C.V.	<i>[Signature]</i>
	Ø	ORIG. RELEASE FOR PROD.	9-24-68	Ø	R.G.	<i>[Signature]</i>

MATERIAL SPECIFICATIONS
 ALUMINUM, ANODIZED
 STAINLESS STEEL, CLEAR PASSIVATED



SHAFT CHART	
STANDARD SHAFT	O.D.
1/8	.187
3/16	.250
1/4	.375

TMC PART NUMBER SHALL BE IN THE FOLLOWING FORMAT:



PURCHASING NOTE:
 ORDER BY MFR CAT NO. (SEE CHART)

QTY / UNIT	HFRR-4	MODEL USED ON	ASS'Y NO.
APPLICATION			
	CODE	S401-350	

NOTICE TO PERSONS RECEIVING THIS DRAWING
 THE TECHNICAL MATERIEL CORPORATION claims proprietary right in the material disclosed hereon. This drawing is issued in confidence for engineering information only and may not be reproduced or used to manufacture anything shown hereon without permission from THE TECHNICAL MATERIEL CORPORATION to the user. This drawing is loaned for mutual assistance and is subject to recall at any time.

UNLESS OTHERWISE SPECIFIED DIMENSIONS ARE IN INCHES AND INCLUDE CHEMICALLY APPLIED OR PLATED FINISHES

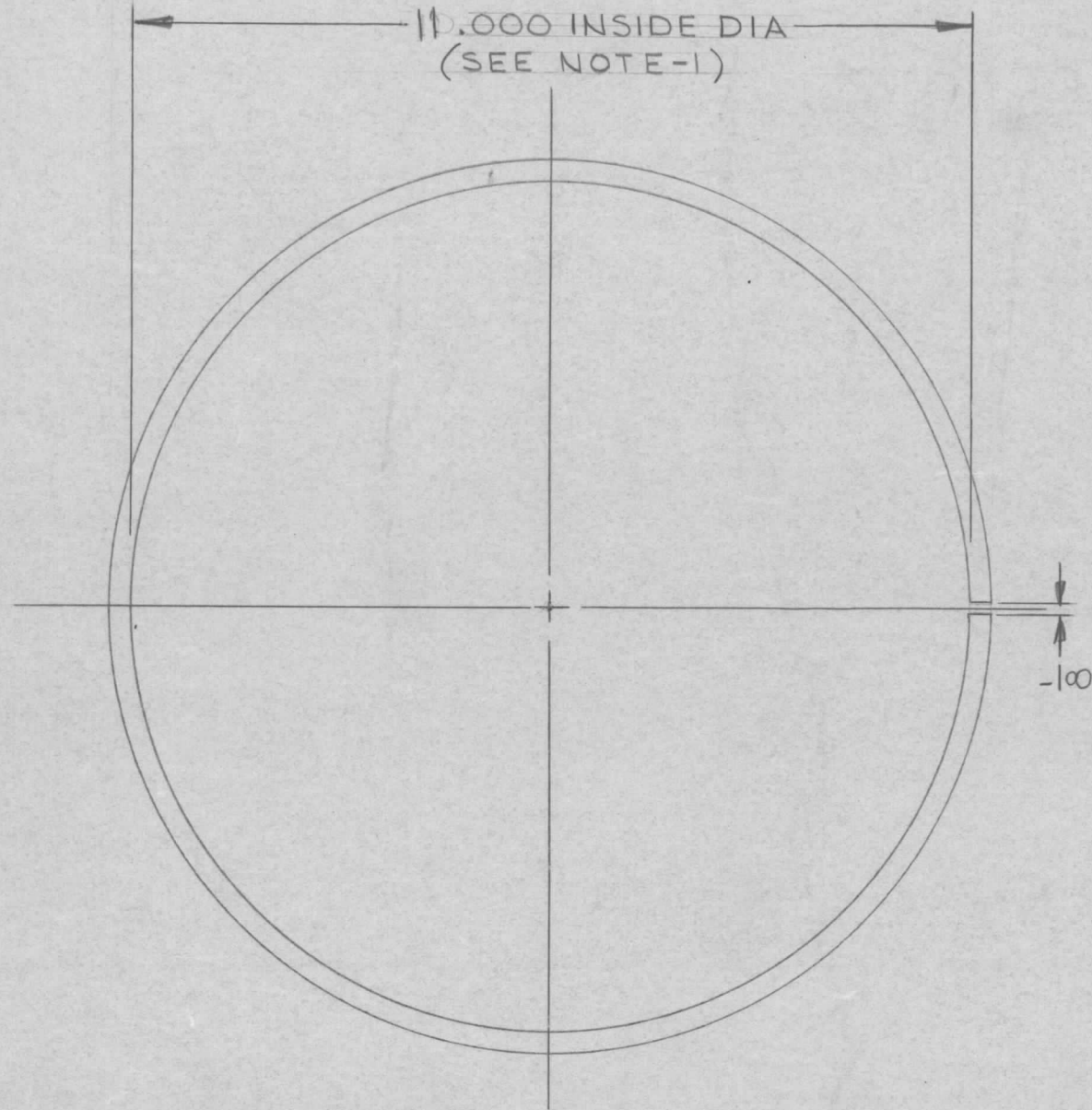
DECIMALS	FRACTIONS
.X ± .05	1/64
.XX ± .01	TOLS. ANGLES
.XXX ± .005	0° -30'

MATERIAL
FINISH

REQ'D	ITEM	PART NUMBER	DESCRIPTION	SYM.
LIST OF MATERIAL				
THE TECHNICAL MATERIEL CORP. MAMARONECK, NEW YORK				
SPACER, SHAFT, PRECISION				
	SIZE	CODE IDENT. NO.	DWG NO.	ISSUE
	B	82679	PM 1370	Ø
SCALE			SHEET	OF

REVISIONS

ZONE	LTR	DESCRIPTION	DATE	E.M.N.NO	DRAFT	CHKD	APPD
	X1	DWG REPLACED GUSSET	6/13/68		JL		
	X2	10.000 TO 11.000	6/20/68				
	Ø	ORIG. RELEASE FOR PROD	11/4/68	Ø	R.G.		



NOTES:

1-FABRICATE TO FIT 11" OUTSIDE DIA OF SUPPORT RING PER TU105 K3291-000-1

1	AWTA-1	A4742
QTY / UNIT	MODEL USED ON	ASS'Y NO.
APPLICATION		
	CODE	

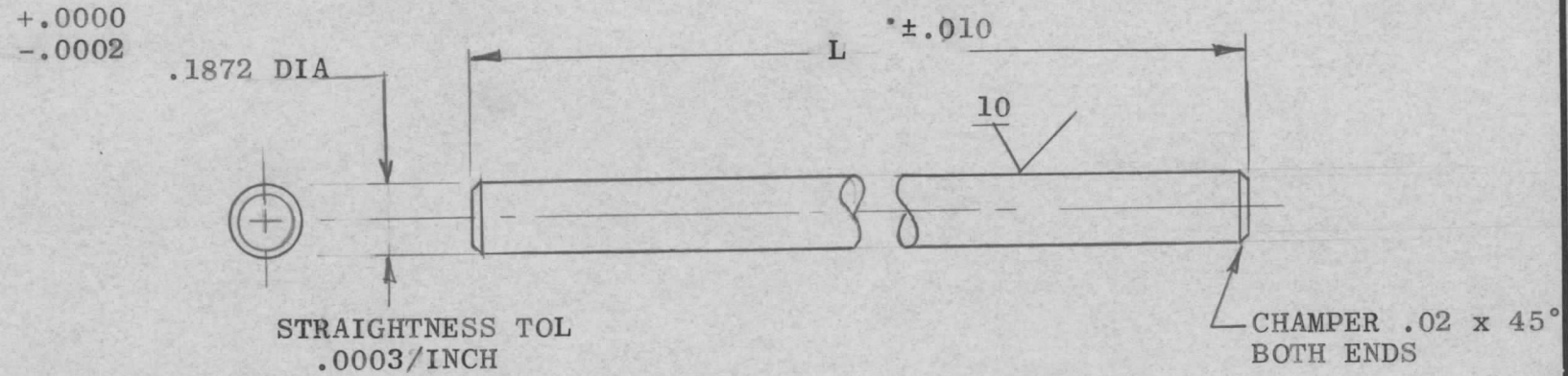
NOTICE TO PERSONS RECEIVING THIS DRAWING
 THE TECHNICAL MATERIEL CORPORATION claims proprietary right in the material disclosed hereon. This drawing is issued in confidence for engineering information only and may not be reproduced or used to manufacture anything shown hereon without permission from THE TECHNICAL MATERIEL CORPORATION to the user. This drawing is loaned for mutual assistance and is subject to recall at any time.

UNLESS OTHERWISE SPECIFIED DIMENSIONS ARE IN INCHES AND INCLUDE CHEMICALLY APPLIED OR PLATED FINISHES	
DECIMALS .X ± .05 .XX ± .01 .XXX ± .005	FRACTIONS TOLS. 1/64 ANGLES 0° -30'
MATERIAL CRS FLATWIRE .250 THK X 1" WIDE	
FINISH #	

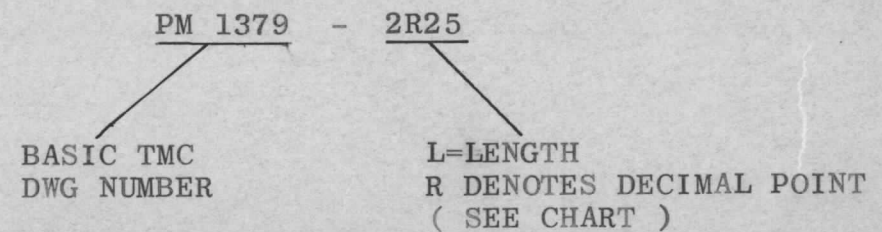
REQ'D	ITEM	PART NUMBER	DESCRIPTION	SYM.
ZETENA LIST OF MATERIAL SK3291-000-3				
THE TECHNICAL MATERIEL CORP. MAMARONECK, NEW YORK				
RING, RETAINER-TRUNK				
SIZE	CODE	IDENT. NO.	DWG NO.	ISSUE
B	82679		PM 13730	Ø
SCALE 1/2			SHEET OF	

CAT NO.	"L"	CAT NO.	"L"	CAT NO.	"L"	CAT NO.	"L"
A2-10	1.00	A2-50	5.00	A2-90	9.00	A2-130	13.00
A2-11	1.12	A2-51	5.12	A2-91	9.12	A2-131	13.12
A2-12	1.25	A2-52	5.25	A2-92	9.25	A2-132	13.25
A2-13	1.37	A2-53	5.37	A2-93	9.37	A2-133	13.37
A2-15	1.50	A2-55	5.50	A2-95	9.50	A2-135	13.50
A2-16	1.62	A2-56	5.62	A2-96	9.62	A2-136	13.62
A2-17	1.75	A2-57	5.75	A2-97	9.75	A2-137	13.75
A2-18	1.87	A2-58	5.87	A2-98	9.87	A2-138	13.87
A2-20	2.00	A2-60	6.00	A2-100	10.00	A2-140	14.00
A2-21	2.12	A2-61	6.12	A2-101	10.12	A2-141	14.12
A2-22	2.25	A2-62	6.25	A2-102	10.25	A2-142	14.25
A2-23	2.37	A2-63	6.37	A2-103	10.37	A2-143	14.37
A2-25	2.50	A2-65	6.50	A2-105	10.50	A2-145	14.50
A2-26	2.62	A2-66	6.62	A2-106	10.62	A2-146	14.62
A2-27	2.75	A2-67	6.75	A2-107	10.75	A2-147	14.75
A2-28	2.87	A2-68	6.87	A2-108	10.87	A2-148	14.87
A2-30	3.00	A2-70	7.00	A2-110	11.00	A2-150	15.00
A2-31	3.12	A2-71	7.12	A2-111	11.12	A2-151	15.12
A2-32	3.25	A2-72	7.25	A2-112	11.25	A2-152	15.25
A2-33	3.37	A2-73	7.37	A2-113	11.37	A2-152	15.37
A2-35	3.50	A2-75	7.50	A2-115	11.50	A2-155	15.50
A2-36	3.62	A2-76	7.62	A2-116	11.62	A2-156	15.62
A2-37	3.75	A2-77	7.75	A2-117	11.75	A2-157	15.75
A2-38	3.87	A2-78	7.87	A2-118	11.87	A2-158	15.87
A2-40	4.00	A2-80	8.00	A2-120	12.00	A2-160	16.00
A2-41	4.12	A2-81	8.12	A2-121	12.12	A2-161	16.12
A2-42	4.25	A2-82	8.25	A2-122	12.25	A2-162	16.25
A2-43	4.37	A2-83	8.37	A2-123	12.37	A2-163	16.37
A2-45	4.50	A2-84	8.50	A2-125	12.50	A2-165	16.50
A2-46	4.62	A2-86	8.62	A2-126	12.62	A2-166	16.62
A2-47	4.65	A2-87	8.75	A2-127	12.75	A2-167	16.75
A2-48	4.87	A2-88	8.87	A2-128	12.87	A2-168	16.87

REVISIONS							
ZONE	LTR	DESCRIPTION	DATE	E.M.N.NO	DRAFT	CHKD	APPD
	X	EXPERIMENTAL RELEASE				C.V.	
	Ø	ORIG. RELEASE FOR PROD	11/4/65	Ø		R.G.	



TMC PART NUMBER SHALL BE IN THE FOLLOWING FORMAT:



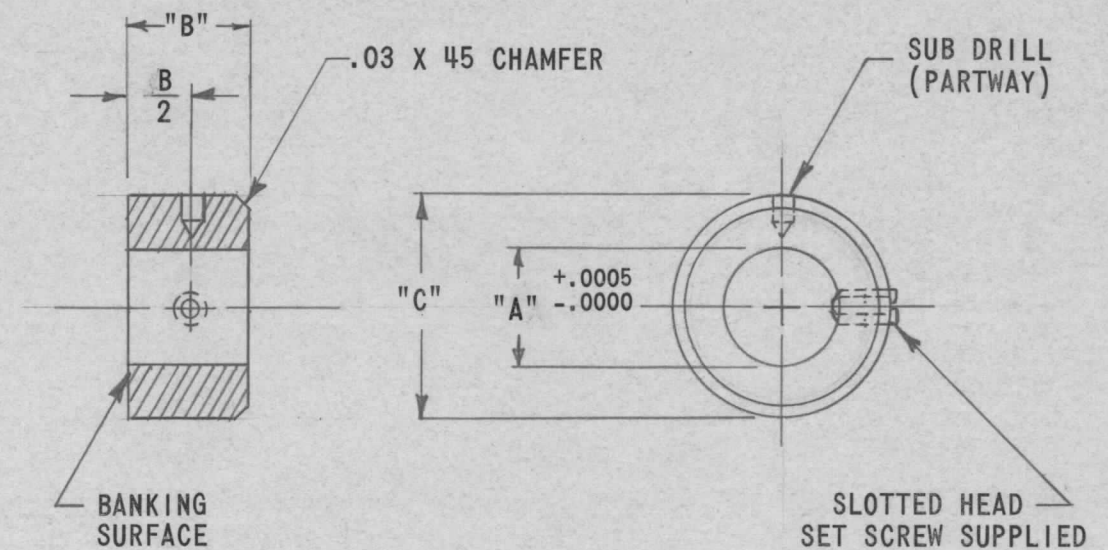
HFRR-4	
QTY / UNIT	ASS'Y NO.
APPLICATION	
CODE	S401-350(A2 SER)
NOTICE TO PERSONS RECEIVING THIS DRAWING	
THE TECHNICAL MATERIEL CORPORATION claims proprietary right in the material disclosed hereon. This drawing is issued in confidence for engineering information only and may not be reproduced or used to manufacture anything shown hereon without permission from THE TECHNICAL MATERIEL CORPORATION to the user. This drawing is loaned for mutual assistance and is subject to recall at any time.	

UNLESS OTHERWISE SPECIFIED DIMENSIONS ARE IN INCHES AND INCLUDE CHEMICALLY APPLIED OR PLATED FINISHES	
DECIMALS .X ± .05 .XX ± .01 .XXX ± .005	FRACTIONS 1/64 ANGLES 0° -30'
MATERIAL 303 STAINLESS STEEL	
FINISH CLEAR PASSIVATE	

REQ'D	ITEM	PART NUMBER	DESCRIPTION	SYM.
S. DEMARCO LIST OF MATERIAL				
FINAL APPROVAL			DATE 9/24/68	THE TECHNICAL MATERIEL CORP. MAMARONECK, NEW YORK
MECH. DES.			DATE 11-1-65	
ELECT. DES.			DATE	
CHECKED			DATE 10/31/68	SHAFT, PRECISION, GROUND (3/16 DIA)
DRAWN			DATE 9/3/68	
SIZE	CODE IDENT. NO.	DWG NO.	ISSUE	
B	82679	PM 1379	Ø	
SCALE	SHEET		OF	

TMC P/N	CAT NO.	"A"	"B"	"C"	SUB DRILL NUMBER	SET SCREW
PM1380-1	CI-1	.1248	.18	5/16	#69(.029)	#2-56
-2	CI-2	.1873	.22	3/8	#60(.040)	#4-40
-3	CI-3	.2498	.25	1/2	#50(.070)	#6-32
-4	CI-4	.1200	.18	5/16	#69(.029)	#2-56
-5	CI-5	.1560	.18	5/16	#69(.029)	#2-56
-6	CI-6	.2405	.25	1/2	#50(.070)	#6-32
-7	CI-7	.0779	.12	7/32	#78(.016)	#0-80
-8	CI-8	.0935	.12	1/4	#78(.016)	#0-80

REVISIONS						
ZONE	LTR	DESCRIPTION	DATE	E.M.N.NO	DRAFT	CHKD APPD
	X	EXPERIMENTAL RELEASE	9/9/68		C.V.	<i>[Signature]</i>
	Ø	ORIG. RELEASE FOR PROD	9-24-68	Ø	R.G.	<i>[Signature]</i>



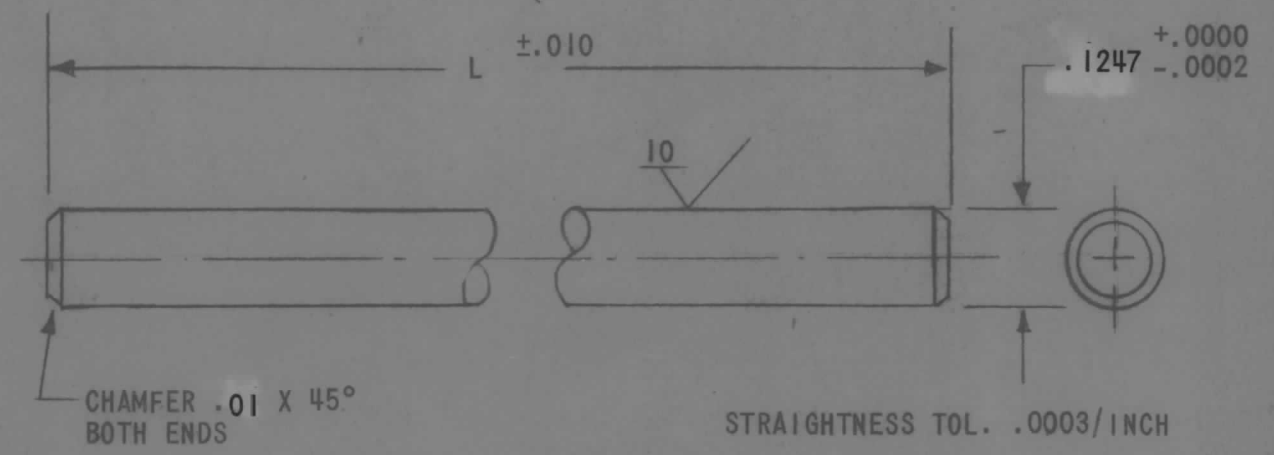
HFRR-4		ASS'Y NO.
APPLICATION		
QTY / UNIT	MODEL USED ON	ASS'Y NO.
	CODE	S401-350(CI SERIES)
NOTICE TO PERSONS RECEIVING THIS DRAWING THE TECHNICAL MATERIEL CORPORATION claims proprietary right in the material disclosed hereon. This drawing is issued in confidence for engineering information only and may not be reproduced or used to manufacture anything shown hereon without permission from THE TECHNICAL MATERIEL CORPORATION to the user. This drawing is loaned for mutual assistance and is subject to recall at any time.		

UNLESS OTHERWISE SPECIFIED DIMENSIONS ARE IN INCHES AND INCLUDE CHEMICALLY APPLIED OR PLATED FINISHES	
DECIMALS	FRACTIONS
.X ± .05	1/64
.XX ± .01	TOLS. ANGLES
.XXX ± .005	0° -30'
MATERIAL 303	
FINISH CLEAR PASSIVATE	

REQ'D	ITEM	PART NUMBER	DESCRIPTION	SYM.
LIST OF MATERIAL				
FINAL APPROVAL <i>[Signature]</i> DATE 9/24/68 MECH. DES. <i>[Signature]</i> DATE 9-23-68 ELECT. DES. DATE CHECKED <i>[Signature]</i> DATE 9/15/68 DRAWN <i>[Signature]</i> DATE 9-16-68				
THE TECHNICAL MATERIEL CORP. MAMARONECK, NEW YORK				
COLLAR, SHAFT, PRECISION				
SIZE	CODE IDENT. NO.	DWG NO.	ISSUE	
B	82679	PM 1380	Ø	
SCALE	SHEET		OF	

CAT NO.	"L"	CAT NO.	"L"	CAT NO.	"L"	CAT NO.	"L"
A1-10	1.00	A1-50	5.00	A1-90	9.00	A1-130	13.00
▲-11	1.12	▲-51	5.12	▲-91	9.12	▲-131	13.12
-12	1.25	-52	5.25	-92	9.25	-132	13.25
-13	1.37	-53	5.37	-93	9.37	-133	13.37
-15	1.50	-55	5.50	-95	9.50	-135	13.50
-16	1.62	-56	5.62	-96	9.62	-136	13.62
-17	1.75	-57	5.75	-97	9.75	-137	13.75
-18	1.87	-58	5.87	-98	9.87	-138	13.87
-20	2.00	-60	6.00	-100	10.00~	-140	14.00
-21	2.12	-61	6.12	-101	10.12	-141	14.12
-22	2.25	-62	6.25	-102	10.25	-142	14.25
-23	2.37	-63	6.37	-103	10.37	-143	14.37
-25	2.50	-65	6.50	-105	10.50	-145	14.50
-26	2.62	-66	6.62	-106	11.62	-146	14.62
-27	2.75	-67	6.75	-107	10.75	-147	14.75
-28	2.87	-68	6.87	-108	10.87	-148	14.87
-30	3.00	-70	7.00	-110	11.00	-150	15.00
-31	3.12	-71	7.12	-111	11.12	-151	15.12
-32	3.25	-72	7.25	-112	11.25	-152	15.25
-33	3.37	-73	7.37	-113	11.37	-153	15.37
-35	3.50	-75	7.50	-115	11.50	-155	15.50
-36	3.62	-76	7.62	-116	11.62	-156	15.62
-37	3.75	-77	7.75	-117	11.75	-157	15.75
-38	3.87	-78	7.87	-118	11.87	-158	15.87
-40	4.00	-80	8.00	-120	12.00	-160	16.00
-41	4.12	-81	8.12	-121	12.12	-161	16.12
-42	4.25	-82	8.25	-122	12.25	-162	16.25
-43	4.37	-83	8.37	-123	12.37	-163	16.27
-45	4.50	-85	8.50	-125	12.50	-165	16.50
-46	4.62	-86	8.62	-126	12.62	-166	16.62
▼-47	4.75	▼-87	8.75	▼-127	12.75	▼-167	16.75
A1-48	4.87	A1-88	8.87	A1-128	12.87	A1-168	16.87

REVISIONS						
ZONE	LTR	DESCRIPTION	DATE	E.M.N.NO	DRAFT	CHKD APPD
	X	EXPERIMENTAL RELEASE			C.V.	
	Ø	ORIG. RELEASE FOR PROD	1-20-69	Ø	R.G.	



TMC PART NUMBER SHALL BE IN THE FOLLOWING FORM:

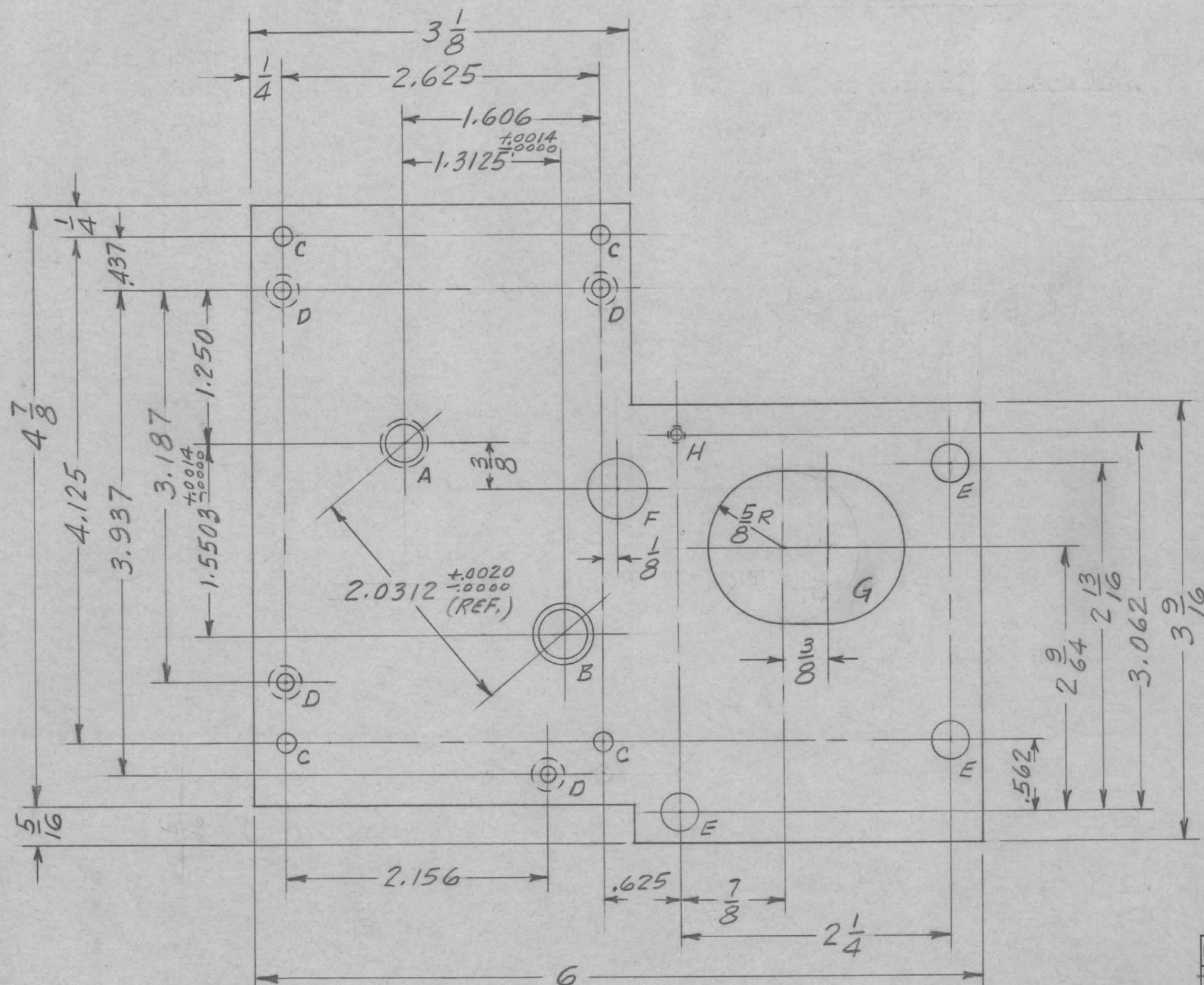
PM 1382 - 8R37
 BASIC TMC DWG. NO.

L=LENGTH
 R DENOTES DECIMAL POINT
 (SEE CHART)

NOTE:
 ODD LENGTHS AND SPECIAL DIAMETERS AVAILABLE ON REQUEST

HFRR-4	
QTY / UNIT	ASS'Y NO.
APPLICATION	
CODE	
NOTICE TO PERSONS RECEIVING THIS DRAWING THE TECHNICAL MATERIEL CORPORATION claims proprietary right in the materiel disclosed hereon. This drawing is issued in confidence for engineering information only and may not be reproduced or used to manufacture anything shown hereon without permission from THE TECHNICAL MATERIEL CORPORATION to the user. This drawing is loaned for mutual assistance and is subject to recall at any time.	

REQ'D	ITEM	PART NUMBER	DESCRIPTION	SYM.
B. 82679 LIST OF MATERIAL				
UNLESS OTHERWISE SPECIFIED DIMENSIONS ARE IN INCHES AND INCLUDE CHEMICALLY APPLIED OR PLATED FINISHES		THE TECHNICAL MATERIEL CORP. MAMARONECK, NEW YORK		
DECIMALS .X ± .05 .XX ± .01 .XXX ± .005		SHAFT, PRECISION GROUND (1/8 DIA)		
FRACTIONS 1/64 ANGLES 0° -30'				
MATERIAL 303		SIZE B		
FINISH CLEAR PASSIVATE		CODE IDENT. NO. 82679		
		DWG NO. PM 1382		
		ISSUE Ø		
		SCALE SHEET OF		



REVISIONS							
ZONE	LTR	DESCRIPTION	DATE	E.M.N.NO	DRAFT	CHKD	APPD
	Ø	ORIG. RELEASE FOR PROD.	2-26-69		RG		JR

HFRR-4 003252-003

- HOLE LEGEND**
- A - .312 DR. THRU & C'BORE
.3747-.3750 DIA. x 125 DEEP ON FAR SIDE
 - B - .406 DR. THRU & C'BORE
.4997-.5000 DIA. x 125 DEEP
 - C - 11/64 DIA - 4 REQ.
 - D - 144 DR. & 82° C'SINK
TO .284 DIA. FACE, ON FAR SIDE - 4REQ
 - E - 5/16 DIA. 3 REQ
 - F - 1/2 DIA
 - G - 1 1/4 DIA. x 1 5/8 LG
 - H - 6-32 TAP

REQ'D	ITEM	PART NUMBER	DESCRIPTION	SYM.
			LIST OF MATERIAL SK3252-X1	
			THE TECHNICAL MATERIEL CORP. MAMARONECK, NEW YORK	
			REAR GEAR PLATE	
			SIZE B	
			CODE IDENT. NO. 82679	
			DWG NO. PM1387	
			ISSUE Ø	
			SCALE	
			SHEET	OF

1	HFRR-4	
QTY / UNIT	MODEL USED ON	ASS'Y NO.
	APPLICATION	
	CODE	
NOTICE TO PERSONS RECEIVING THIS DRAWING THE TECHNICAL MATERIEL CORPORATION claims proprietary right in the material disclosed hereon. This drawing is issued in confidence for engineering information only and may not be reproduced or used to manufacture anything shown hereon without permission from THE TECHNICAL MATERIEL CORPORATION to the user. This drawing is loaned for mutual assistance and is subject to recall at any time.		

UNLESS OTHERWISE SPECIFIED DIMENSIONS ARE IN INCHES AND INCLUDE CHEMICALLY APPLIED OR PLATED FINISHES

DECIMALS	FRACTIONS
.X ± .05	1/64
.XX ± .01	TOLS. ANGLES
.XXX ± .005	0° - 30'

MATERIAL .160 THICK ALUM. 2024T-3

FINISH 5404 YEL. IRIDITE

FINAL APPROVAL [Signature] DATE 2/2/69

MECH. DES. [Signature] DATE 2/26/69

ELECT. DES. [Signature] DATE

CHECKED [Signature] DATE 2/26/69

DRAWN [Signature] D.A.C. DATE 2/26/69