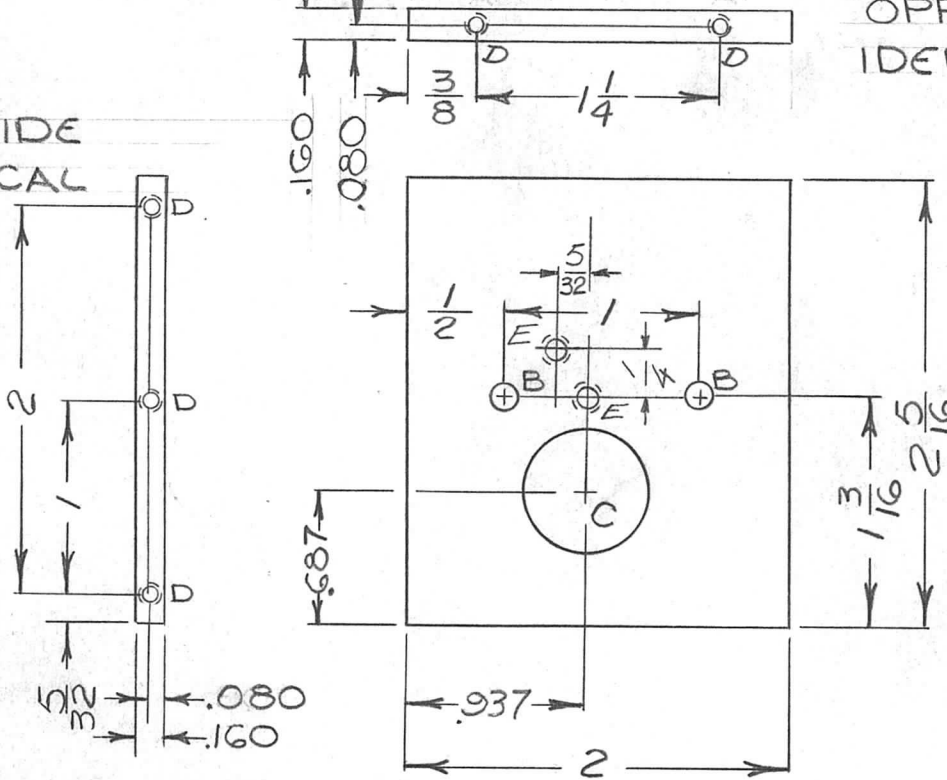


APPLICATION			REVISIONS							
QTY	MODEL USED ON	ASS'Y NO.	LTR	DESCRIPTION	DATE	E.M.N.NO	DRAFT	CHKD	APPD	
1	HFRR-4		X	EXP. RELEASE	1-22-68					
			Ø	ORIG. RELEASE FOR PROD.	11-6-68	Ø	R.G.			
			A	ADD. 2 "E" HOLES	2-28-69	19349	GE			
			B	REV. & UPDATED	11/3/69	19629	LT.			

OPP. SIDE IDENTICAL

OPP. SIDE IDENTICAL



HOLE	DESCRIPTION	REQ'D
A	NO. 43 (.089) DRILL & TAP	
B	7/64 DIA.	2
C	.627 ± .001 DIA	1
D	NO. 50 (.0700) DR. x 5/16 DP TAP #2-56 NC-2B x 3/16 DP.	10
E	NO. 43 (.089) DRILL & TAP 0440 NC 2B 1	2

UNLESS OTHERWISE SPECIFIED DIMENSIONS ARE IN INCHES AND INCLUDE CHEMICALLY APPLIED OR PLATED FINISHES

DECIMALS FRACTIONS
 .X ± .05 1/64
 .XX ± .01 TOLS. ANGLES
 .XXX ± .005 0° - 30°
 MATERIAL .160 THK
 ALUM. 2024-T3
 FINISH S404
 YEL. IRIDITE
 S401-451

REQ'D	ITEM	PART NUMBER	DESCRIPTION	SYM.
	HOGAN		LIST OF MATERIALS K3252-003-27X2	
	FINAL APPROVAL	DATE	THE TECHNICAL MATERIEL CORP. MAMARONECK, NEW YORK BRACE, REAR	
	MECH. DES. M. ZETENA	DATE 11/6/68		
	ELECT. DES.	DATE		
	CHECKED SG	DATE 1/23/68		
	DRAWN J. Hochman	DATE 1-23-68		

NOTICE TO PERSONS RECEIVING THIS DRAWING
 THE TECHNICAL MATERIEL CORPORATION claims proprietary right in the material disclosed hereon. This drawing is issued in confidence for engineering information only and may not be reproduced or used to manufacture anything shown hereon without permission from THE TECHNICAL MATERIEL CORPORATION to the user. This drawing is loaned for mutual assistance and is subject to recall at any time.

SIZE	CODE IDENT. NO.	DWG NO.	ISSUE
A	82679	PM1353	B
SCALE 1:1		SHEET	OF