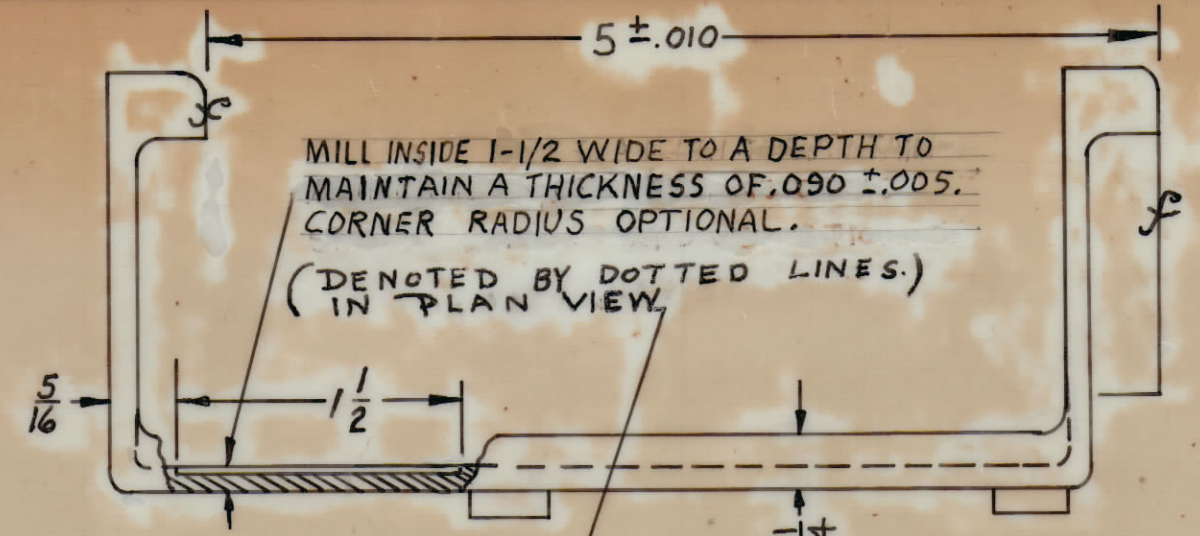


IF IT IS FOUND DESIRABLE TO CHANGE ANY TOLERANCE OR OTHER DETAIL SPECIFIED ON THIS DRAWING NOTIFY THE PURCHASER PROMPTLY.

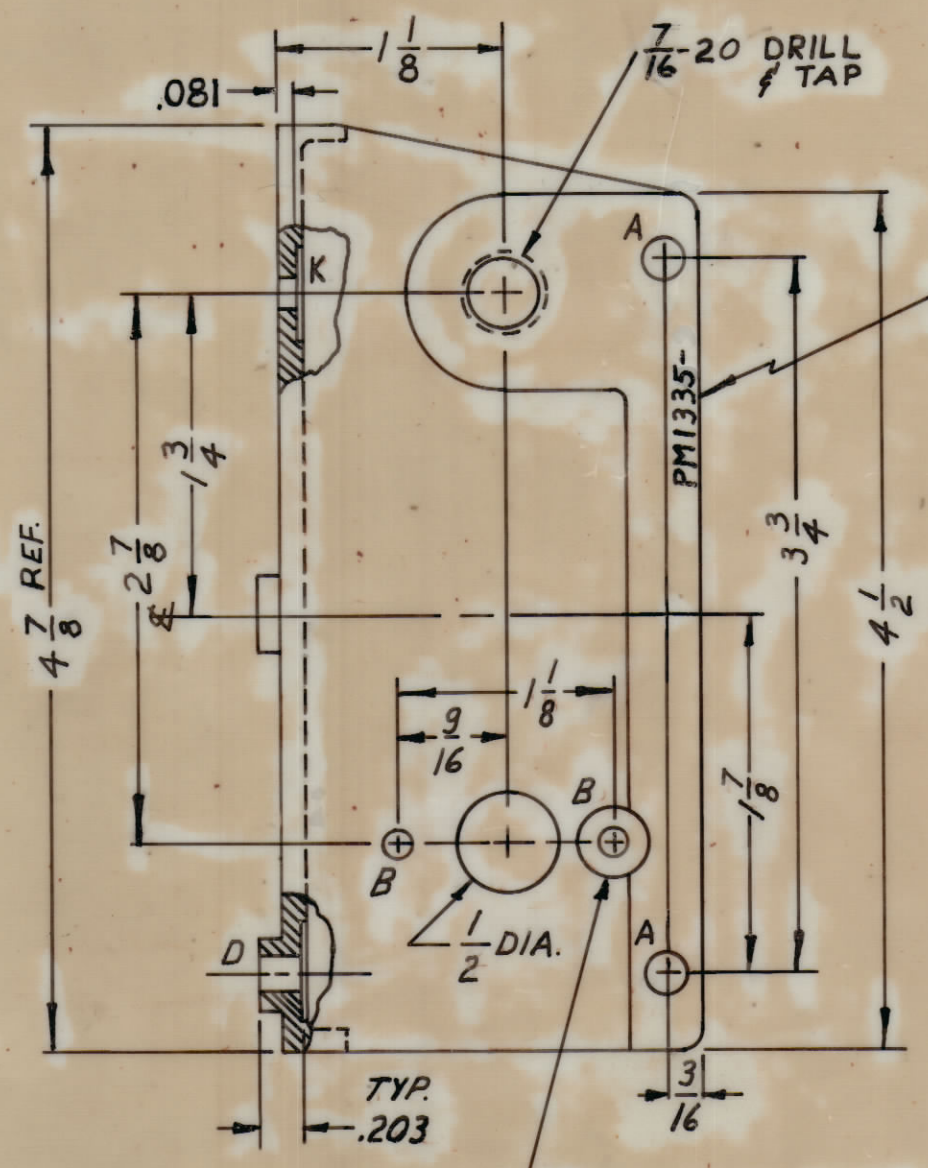
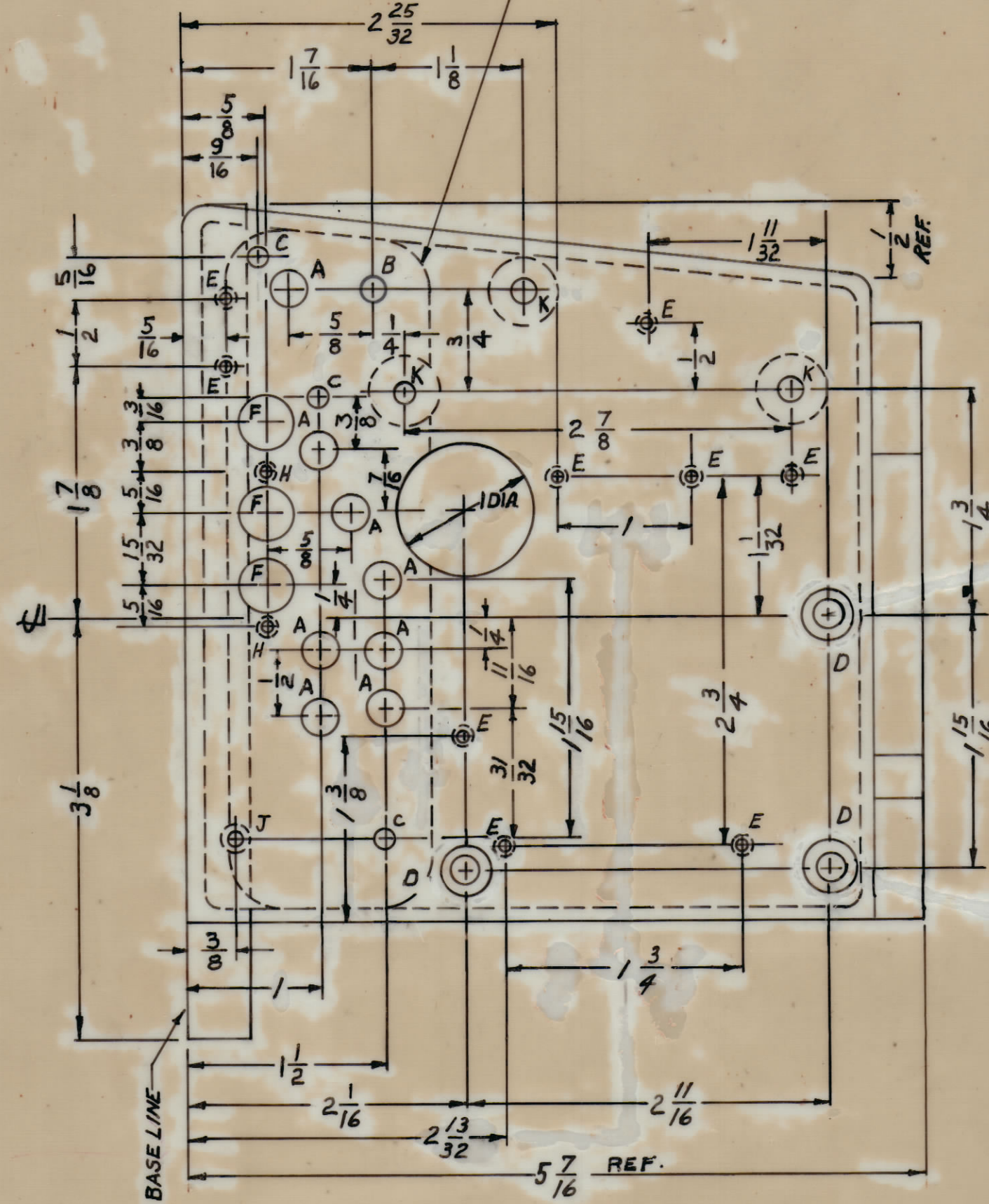
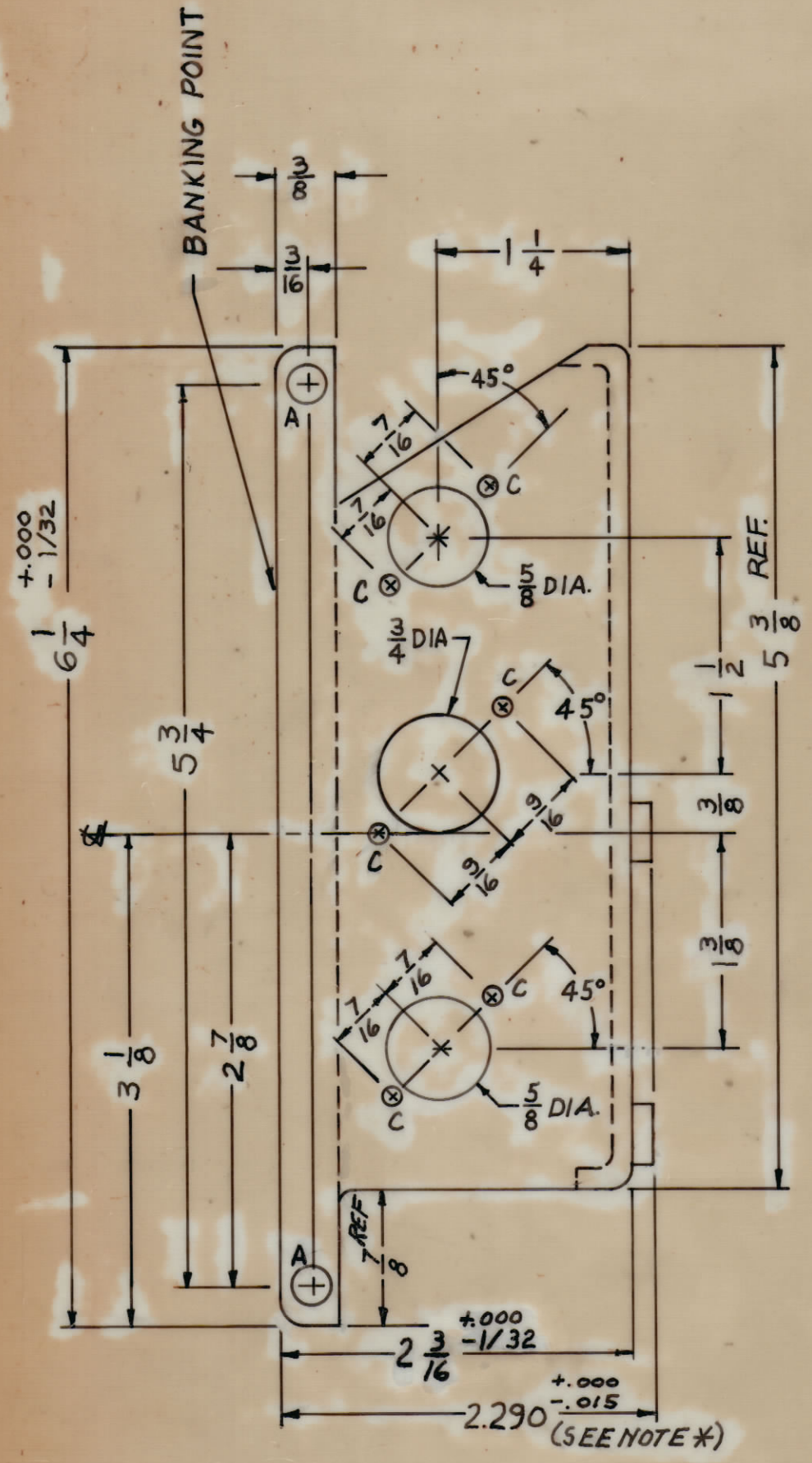
MAXIMUM ALLOWABLE TOLERANCES HAVE BEEN DETERMINED AND DEVIATIONS WILL BE CAUSE FOR REJECTION. REMOVE ALL BURRS AND SHARP EDGES.



TO 5° MAX. TO PERPENDICULAR

HOLE LEGEND

- A-1/4 (.250) DIA. HOLE 12 REQ.
- B-11/64 (.171) DIA. HOLE 3 REQ.
- C-9/64 (.140) DIA. HOLE 9 REQ.
- D-13/64 DRILL (THRU); C'BORE FROM BOTTOM TO THICKNESS OF .203 ± .003 x 3/8 3 REQ.
- E-G-32- DRILL & TAP 9 REQ.
- F-3/8 (.375) DIA. 3 REQ.
- H-DRILL & TAP 4-40 2 REQ.
- J- DRILL & TAP 8-32 1 REQ.
- K- 11/64 DRILL (THRU); C'BORE FROM BOTTOM TO THICKNESS OF .081 x 1/2 3 REQ.



MARK TMC PART NO. 1/8 HIGH, GOTHIC. WITH LATEST REV. LETTER.

PM1335 A

THIS HOLE ONLY, TO BE 11/32 DIA. C'BORE, .010 DEEP

* NOTE:
THIS DIMENSION TO BE MAINTAINED ON EACH OF THE 3 BOSSES BY MACHINING THE TOP SURFACE ONLY.

REF: TMC #CS-123
TMC #LD-977

A	"D" HOLE 3/8 D. WAS 1/2 D. MILLING REV. 1/4 R. DEL.	9.14.67	18485	H.G.	DP	HO
Ø	ORIGINAL RELEASE FOR PRODUCTION	4-3-67	Ø	CV		
ISSUE ITEM	CHANGED FROM	DATE	CH. NO.	DRAFTS	CHECKER	ENG. APP.
TOLERANCES		SCALE:				
ALL OTHERS	DEC. DIM. ± FRAC. DIM. ± ANGULAR DIM. ±	DRILL, PUNCH, COMMERCIAL STOCK SIZES AND MANUFACTURERS TOLERANCES ARE NOT INCLUDED.				

1	CMO-2	A1742		
1	CMO-1	A1742		
REQ. PER UNIT	MODEL	PROJECT NO.	ASSY. NO.	DATE
USED ON				

REQ. ITEM	PART NO.	DESCRIPTION	SYMBOL
		THE TECHNICAL MATERIEL CORP. MAMARONECK, NEW YORK	
STOCK SIZE		CHASSIS, OSCILLATOR MACHINING	
MATERIAL	WEIGHT PER PC.		
TYPE & TEMPER		DRAWN	ELEC. DES. APP.
		CHECKED	FINAL APPROVAL
HEAT TREAT. SPEC.			
S404 YEL. IRIDITE		PM1335 A	
FINISH & SPEC. NO.			