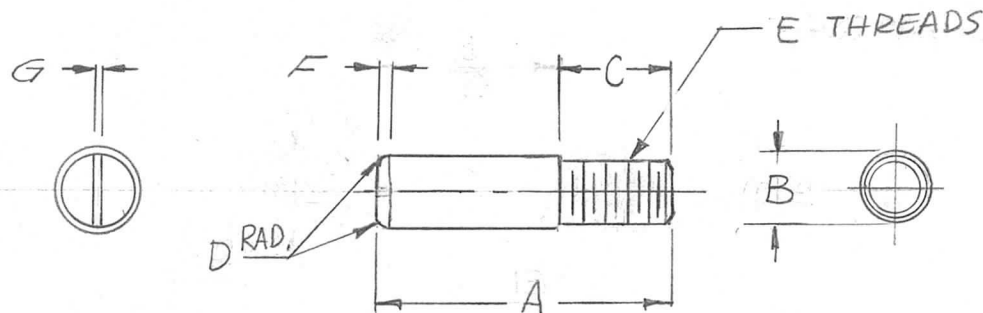


TMC	A	B	C	D	E	MAT'L	FINISH	REQ. PER UNIT	USED ON			PM1323 C
									MODEL	ASS'Y. NO.	DATE	
PM1323-	13/16	3/16	5/16	1/32	8-32	BRASS H.H.	S245 SIL. PL S423 SIL. KOTE	1	TLAA-25K	AS128	8-12-66	
PM1323-2	5/8	3/16	5/16	1/16	632	"	"	1	SWCA-3K	BMA129	11-14-66	
TMC	A	B	C	D	E	F	G	MAT'L.	FINISH			
PM1323-3	13/4	3/16	5/16	1/32	8-32	1/16	1/16	ST.STL.303	NONE			



C	ADD F&G DET. & REV. - 3	5/27/70	19842	GE	WAB	FB	9/28
B	PM1323-3 ADDED	5.21.69	19442	GE	WAB	FB	9/28
A	-2 COL "A" WAS 1/2	2.1.67	1775A	WAB	WAB	FB	9/28
Ø	ORIGINAL RELEASE FOR PRODUCTION	11/17/66	Ø	CV			
X4	ON PM1323-2 E WAS 8-32	10-24-66	X4	WAB	WAB	FB	9/28
X3	ITEM 2 ADDED	10-14-66	X3	WAB			
X2	1/2 WAS 5/8, 13/16 WAS 15/16	8-22-66	X2	WAB			
X1	COMPL. REV. & REDRAWN.	8.15-66		GDL			
SYM	DESCRIPTION	DATE	CH. NO.	DRAFTS	CHECKER	ENG. APP.	
UNLESS OTHERWISE SPECIFIED DIMENSIONS ARE IN INCHES AND INCLUDE CHEMICALLY APPLIED OR PLATED FINISHES		SCALE		2:1			
DECIMALS .X ± .05 .XX ± .01 .XXX ± .005		FRACTIONS ± 1/64 ANGLES ± 0° 30'		TOLERANCES		CODE A	
SEE CHART		8-12-66 G.D.L.		WAB		WAB	
TYPE & TEMPER. HEAT TREAT. SPEC.		DRAWN		CHECKED		FINAL APPROVAL	
SEE CHART		WAB		13/8		PM1323 C	
FINISH & SPEC. NO.		ELEC. DES. APP.		MECH. DES. APP.			