

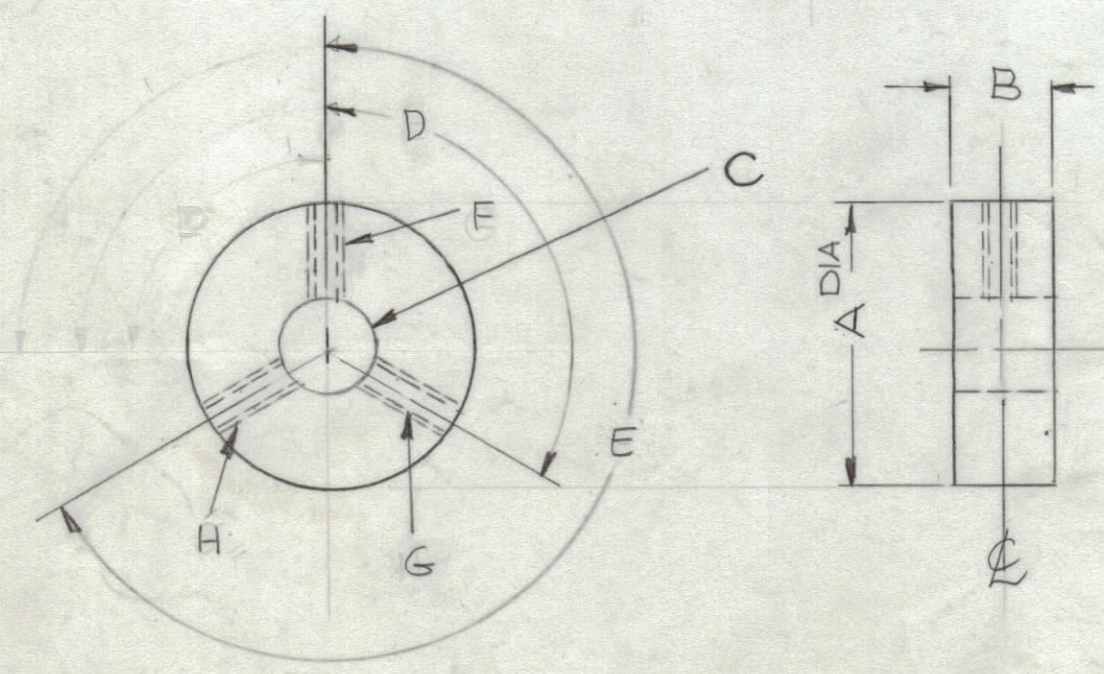
TMC PART No.	DIMENSIONS							
	A	B	C	D \varnothing	E \varnothing	F \varnothing	G	H
PM1321-1	3/4	1/4	.250 DIA	120°	240°	DRILL & TAP FOR 6-32	DR. & TAP FOR 6-32	DR. & TAP FOR 6-32
PM1321-2	1 1/8	1/4	.7344 ^D	120°	240°	DR & TAP FOR 8-32	DR. & TAP FOR 8-32	DR. & TAP FOR 8-32

MATERIAL	FINISH	MODEL
BRASS HALF HARD	S245 SILVER PLATE S423 SILVER KOTE	TLAA-2.5
BRASS HALF HARD	S245 SILVER PLATE S423 SILVER KOTE	TLAA-2.5

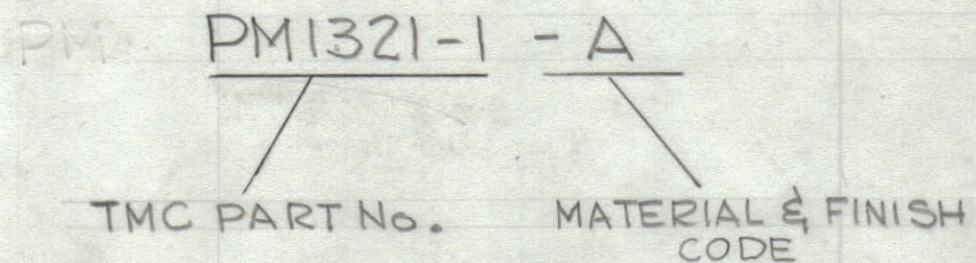
REVISIONS					
ZONE	SYM	DESCRIPTION	DATE	E.M.N. NO.	APPD
	X	EXP. RELEASE	8-16-66		G.D.L.
	XI	COMPLETELY REVISED	11-11-66		RME
	Ø	ORIGINAL RELEASE FOR PRODUCTION	11/16/66		RME

SYM.	MATERIAL

CODE	MATERIAL	FINISH
A	ALUMINUM	S404 YEL. IRIDITE
B	BRASS HALF HARD	S245 SILVER PLATE S423 SILVER KOTE
N	BRASS HALF HARD	NATURAL
S	STAINLES STEEL	S104 PASSIVATE



TMC PART No. TO BE IN THE FOLLOWING FORM



WHEN USING A SINGLE TAPPED OR HOLE COLLAR, REF. TMC DWG. PM786 FOR POSSIBLE USAGE OF EXISTING COLLARS IF IT DOES NOT EXIST THEN MAKE THE NECESSARY ADDITION TO THIS DWG. (PM1321)

- NOTE -
WHEN USING A COLLAR WITH A OR SINGLE HOLE, TAPPED OR UNTAPPED, USE PM 786.

* DENOTES: ROUND ALL EDGES

STANDARD DRAWING

NOTES

1EA.	TLAA-2.5K	AS128
QTY./UNIT	MODEL USED ON	ASS'Y. NO.
DO NOT SCALE	CODE	

THE CONTENTS OF THIS DRAWING ARE THE EXCLUSIVE PROPERTY OF THE TECHNICAL MATERIEL CORP. ITS UNAUTHORIZED USE OR REPRODUCTION IN WHOLE OR IN PART IS STRICTLY FORBIDDEN.

REQ'D.	ITEM	PART NUMBER	DESCRIPTION	SYMBOL
BUDETTI LIST OF MATERIAL				
MATERIAL		THE TECHNICAL MATERIEL CORP. MAMARONECK, NEW YORK		
SEE CHART		TITLE COLLAR TWO OR THREE HOLES		
FINISH		SEE CHART		
UNLESS OTHERWISE SPECIFIED DIMENSIONS ARE IN INCHES AND INCLUDE CHEMICALLY APPLIED OR PLATED FINISHES		DRAWN G.D.L.	DATE 8-10-66	FINAL APPROVAL
		CHECKED JCB	DATE	
DECIMALS .X ± .05 .XX ± .01 .XXX ± .005		TOLERANCES		ELECT. DES. DATE 11/14/66
		FRACTIONS ± 1/64 ANGLES ± 0° 30'		MECH. DES. DATE
				REV. LTR.

PM 1321-1