

NO. 36 (.1065) DRILL & TAP NO. 6-32 NC-2B TH'D (2-PLACES)

SECTION A-A

PM1217 Ø

REVISIONS		DATE	E.M.N. NO.	DRAFT	CHKD	APPD
X	EXP. RELEASE	3/17/65		JL		
Ø	ORIGINAL RELEASE FOR PRODUCTION	3/18/65		JL	WS	

QTY./UNIT	TTR-10	MODEL USED ON	ASSY. NO.
SCALE	2/1	CODE	

REQ'D.	ITEM	PART NUMBER	DESCRIPTION	SYMBOL
	POSE		LIST OF MATERIAL	
	MATERIAL	ALUMINUM 2024-T4	THE TECHNICAL MATERIEL CORP. MAMARONECK, NEW YORK	
	FINISH	YELLOW IRIDITE PER TMC SPEC S404	TITLE CAM, SWITCH, 4 POSITION	

UNLESS OTHERWISE SPECIFIED DIMENSIONS ARE IN INCHES AND INCLUDE CHEMICALLY APPLIED OR PLATED FINISHES

DECIMALS .X ± .05  
.XX ± .01  
.XXX ± .005

TOLERANCES FRACTIONS ± 1/64  
ANGLES ± 0° 30'

DRAWN	J. LESHINSKI	DATE	3/17/65	FINAL APPROVAL		DATE
CHECKED	[Signature]	DATE	3/18/65	[Signature]		
ELECT. DES.		DATE				
MECH. DES.	[Signature]	DATE	3/18/65			

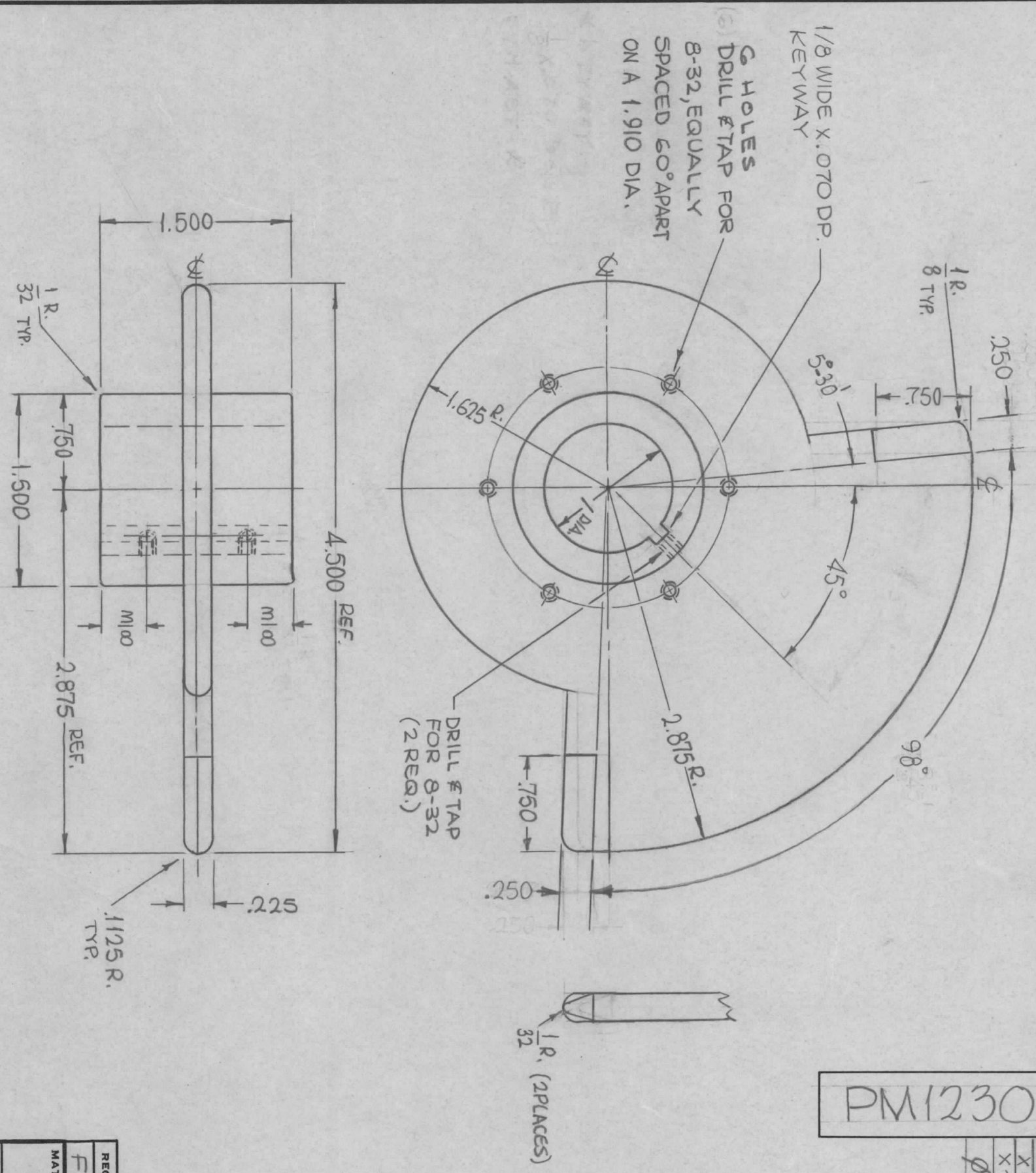
NOTES

THE CONTENTS OF THIS DRAWING ARE THE EXCLUSIVE PROPERTY OF THE TECHNICAL MATERIEL CORP. ITS UNAUTHORIZED USE OR REPRODUCTION IN WHOLE OR IN PART IS STRICTLY FORBIDDEN.



REVISIONS						
SYM	DESCRIPTION	DATE	E.M.N. NO.	DRAFT	CHKD	APPD
X	EXPERIMENTAL RELEASE	3-9-65	X	SPG		
X1	2, 8-32 TAP HOLES ADDED, MODEL WAS GPT-10K	5-5-65	X1	SPG	DA	
X2	RIDING SURFACE INCREASED BY 3/8	8-3-65	X2	ML		
Ø	ORIGINAL RELEASE FOR PRODUCTION	4-20-66	Ø	CV		

PM1230 Ø



NOTE:  
POLISH SMOOTH ALL SURFACES.

NOTES

QTY./UNIT	1	MODEL USED ON	TST (110K)	ASSY. NO.	
SCALE	1:1	CODE	A		

THE CONTENTS OF THIS DRAWING ARE THE EXCLUSIVE PROPERTY OF THE TECHNICAL MATERIEL CORP. ITS UNAUTHORIZED USE OR REPRODUCTION IN WHOLE OR IN PART IS STRICTLY FORBIDDEN.

REQ'D.	ITEM	PART NUMBER	DESCRIPTION	SYMBOL
	F. BUDETTI		LIST OF MATERIAL	

MATERIAL  
BRASS, HALF HARD

FINISH  
S245 SILVER PLATE  
S423 IRIDIUM 18-P SILVER-KOTE

TITLE  
ROTOR, BANDSWITCH

THE TECHNICAL MATERIEL CORP.  
MAMARONECK, NEW YORK

DECIMALS	TOLERANCES	FRACTIONS	ANGLES
.X ± .05		± 1/64	
.XX ± .01		± .005	
.XXX ± .005		± .0005	

UNLESS OTHERWISE SPECIFIED DIMENSIONS ARE IN INCHES AND INCLUDE CHEMICALLY APPLIED OR PLATED FINISHES

DRAWN: SRC DATE: 3-9-65

CHECKED: [Signature] DATE: [Blank]

ELECT. DES. DATE: [Blank]

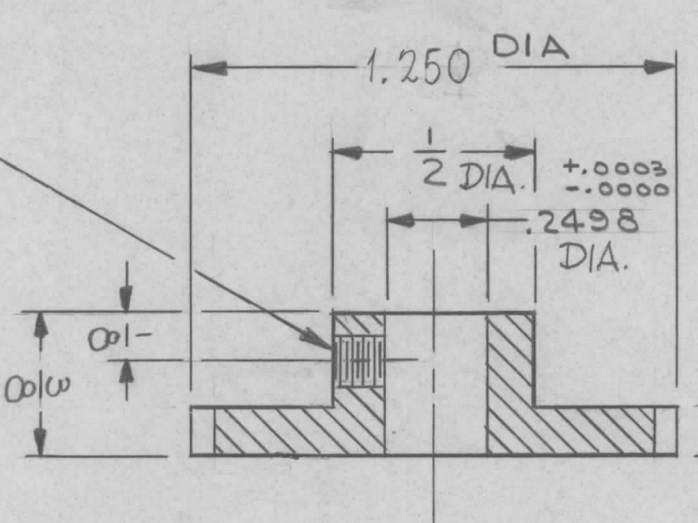
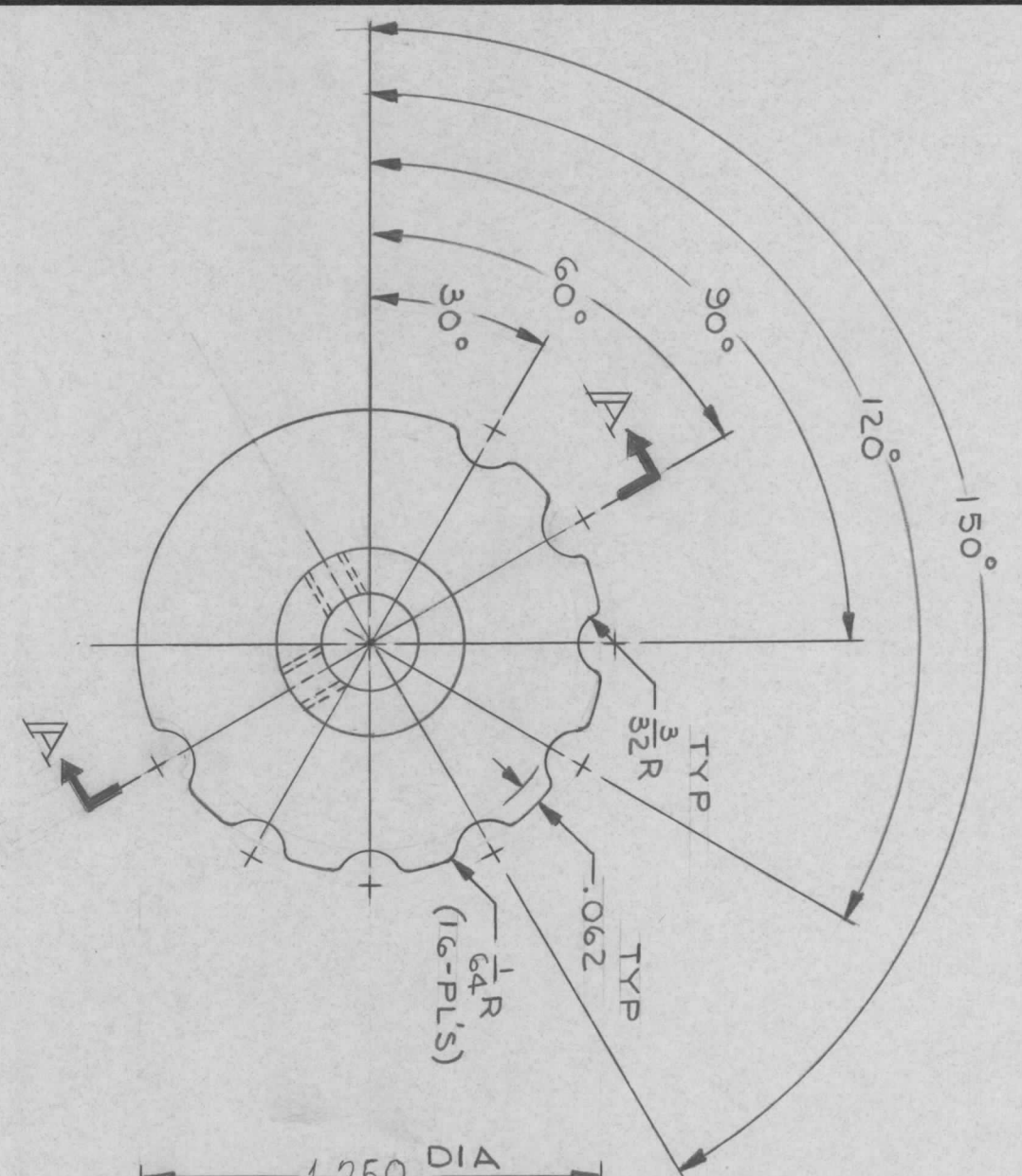
MECH. DES. DATE: [Blank]

FINAL APPROVAL: [Signature] DATE: [Blank]

REV. LTR. [Blank]

REVISIONS		DATE	E.M.N. NO.	DRAFT	CHKD	APPD
X	EXP. RELEASE	3/18/65		JL		
Ø	ORIGINAL RELEASE FOR PRODUCTION	3/18/65		JL	WVF	

PM1231 Ø



NO. 36 (.1065) DRILL &  
TAP NO. 6-32 NC-2B TH'D  
(2-PLACES)

QTY./UNIT	1	MODEL USED ON	SME-1	ASSY. NO.	
SCALE	2/1	CODE			

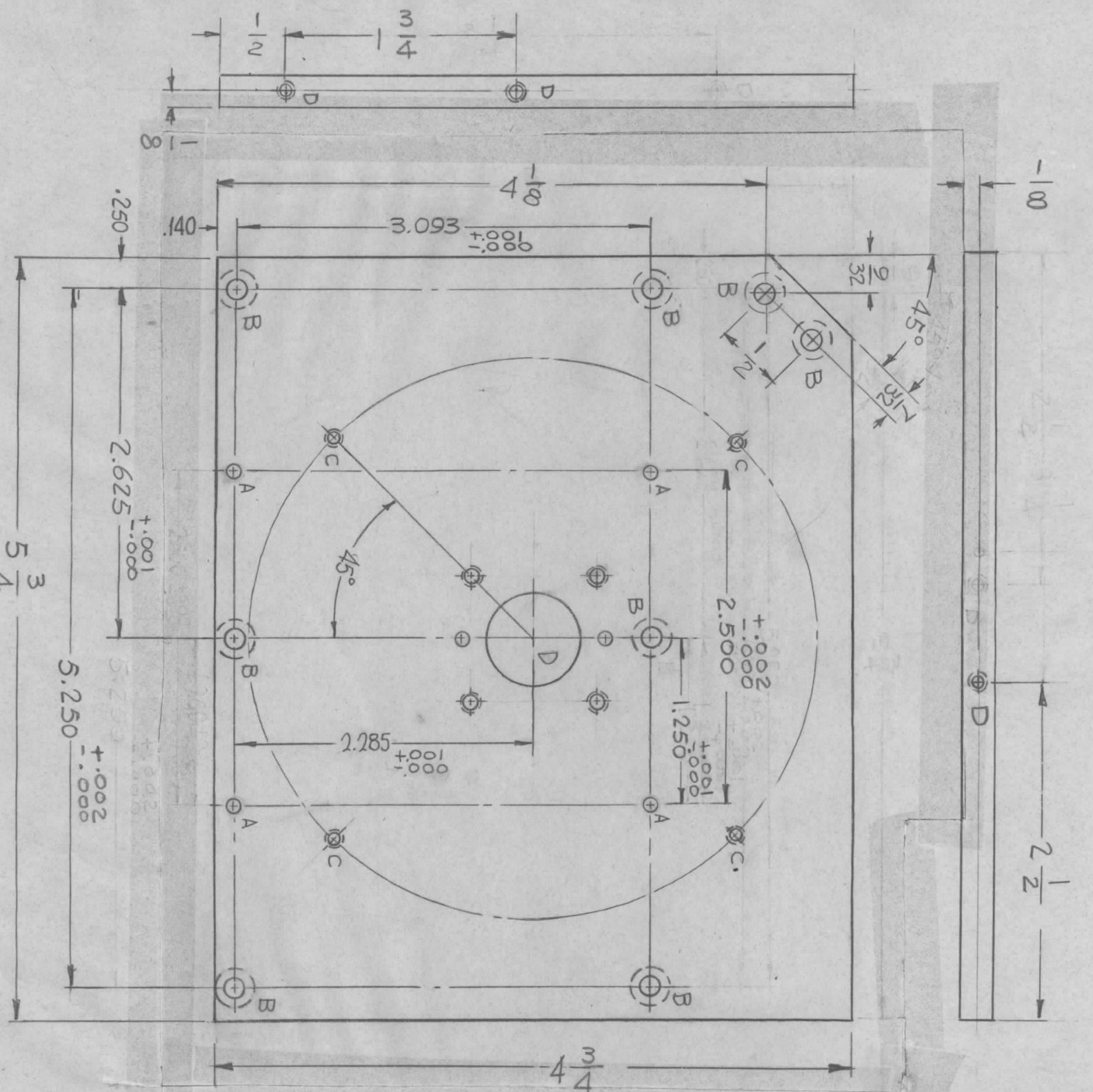
THE CONTENTS OF THIS DRAWING ARE THE EXCLUSIVE PROPERTY OF THE TECHNICAL MATERIEL CORP. ITS UNAUTHORIZED USE OR REPRODUCTION IN WHOLE OR IN PART IS STRICTLY FORBIDDEN.

REQ'D.	ITEM	PART NUMBER	DESCRIPTION	SYMBOL
	POSE		LIST OF MATERIAL	

MATERIAL	ALUMINUM 2024-T4	TITLE	THE TECHNICAL MATERIEL CORP. MAMARONECK, NEW YORK
FINISH	YELLOW IRIDITE PER TMC SPEC S404		

UNLESS OTHERWISE SPECIFIED DIMENSIONS ARE IN INCHES AND INCLUDE CHEMICALLY APPLIED OR PLATED FINISHES	DRAWN J. LESHINSKI	DATE 3/18/65	FINAL APPROVAL <i>[Signature]</i>	DATE
DECIMALS .X ± .05 .XX ± .01 .XXX ± .005	CHECKED <i>[Signature]</i>	DATE 3/18/65		
TOLERANCES	ELECT. DES. <i>[Signature]</i>	DATE		
FRACTIONS ± 1/64 ANGLES ± 0° 30'	MECH. DES. <i>[Signature]</i>	DATE		
			PM1231	Ø
				REV. LTR.

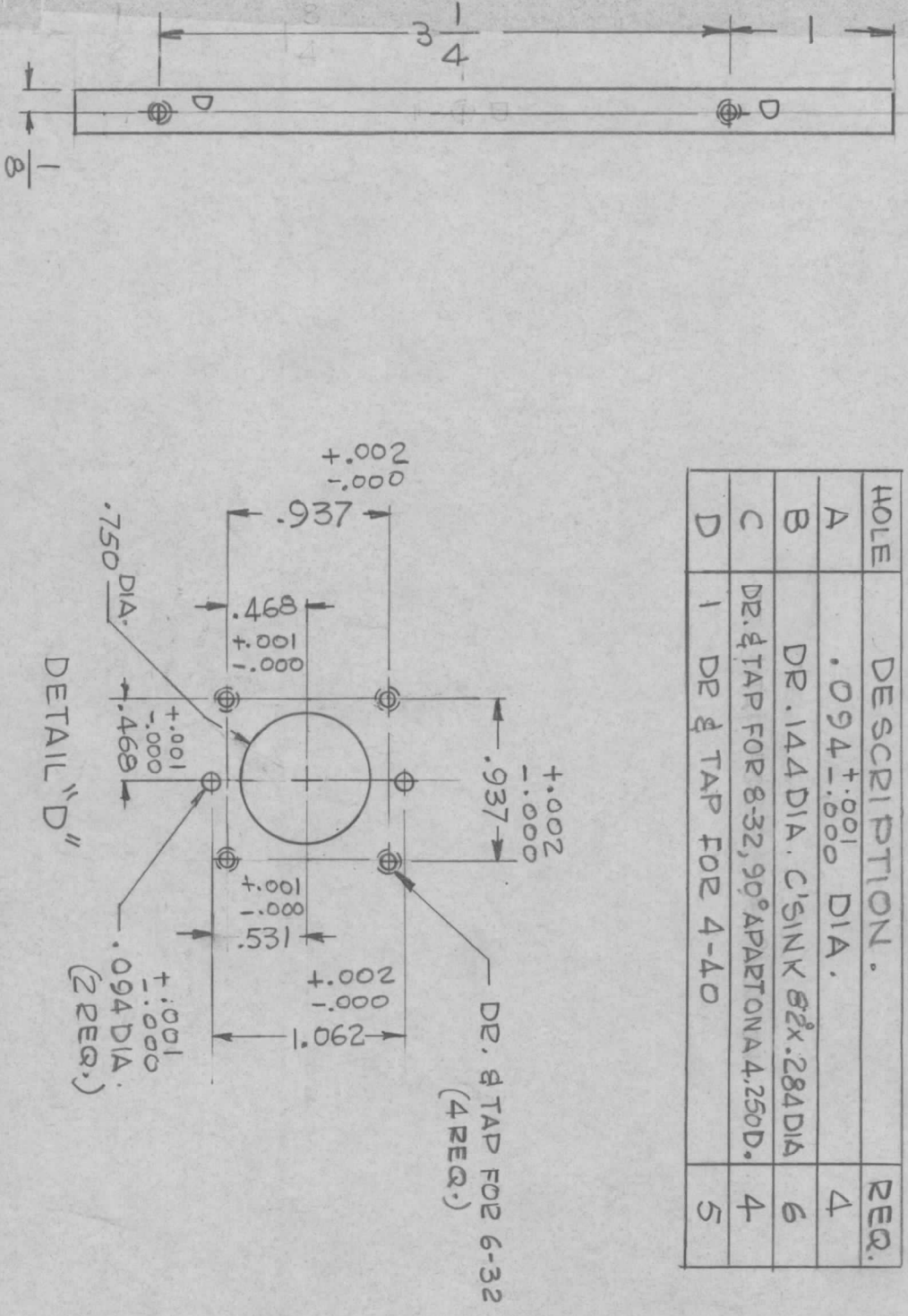
NOTES



PM 1236

SYMBOL		DESCRIPTION		REVISIONS		
SYM		DATE	DESCRIPTION	DATE	E.M.N. NO.	DRAFT
X1		8-10-66	SIDES & TOP VIEW ADDED - CHANGED 2 "B" HOLES & 5 "D" HOLES ADDED REDRAWN FROM SIZE 1	5-26-65	X1	G.D.V.
			ORIGINAL RELEASE FOR PRODUCTION			RME

HOLE	DESCRIPTION	REQ.
A	.094 ± .001 DIA.	4
B	DR. 144 DIA. C'SINK 82x.284 DIA	6
C	DR. & TAP FOR 8-32, 90° APART ON 4.250 D.	4
D	1 DE & TAP FOR 4-40	5



REQ'D.	ITEM	PART NUMBER	DESCRIPTION	SYMBOL
	F. BUDETTI		LIST OF MATERIAL	
		250 THK. ALUMINUM 2024-T3	THE TECHNICAL MATERIEL CORP. MAMARONECK, NEW YORK	
		S404 YEL. IRIDIUM	PLATE, GEAR, TOP	

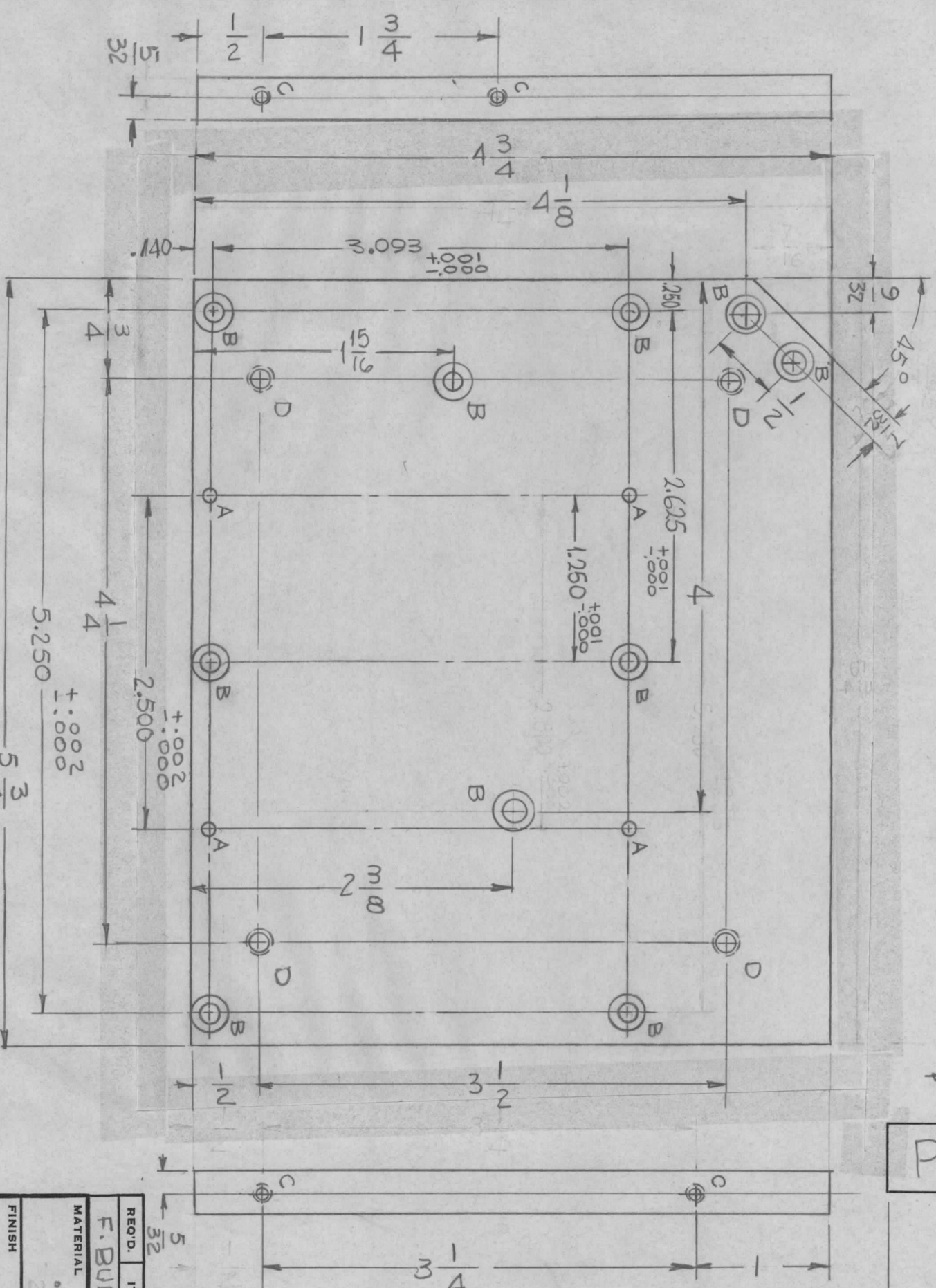
QTY./UNIT	1	TSTE - 10K	ASSY. NO.	ASIGS
SCALE	1:1	MODEL USED ON	CODE	A

UNLESS OTHERWISE SPECIFIED DIMENSIONS ARE IN INCHES AND INCLUDE CHEMICALLY APPLIED OR PLATED FINISHES		DRAWN		DATE	FINAL APPROVAL	DATE
TOLERANCES		CHECKED		DATE	PM 1236	
DECIMALS X ± .05 XX ± .01 XXX ± .005		ELECT. DES.		DATE		
FRACTIONS ± 1/64 ANGLES ± 0° 30'		MECH. DES.		DATE		

NOTES

THE CONTENTS OF THIS DRAWING ARE THE EXCLUSIVE PROPERTY OF THE TECHNICAL MATERIEL CORP. ITS UNAUTHORIZED USE OR REPRODUCTION IN WHOLE OR IN PART IS STRICTLY FORBIDDEN.

REVISIONS				
SYM	DESCRIPTION	DATE	E.M.N. NO.	DRAFT
X1	SIDES & TOP VIEW ADDED - 5 "C" HOLES, 4 "B" HOLES & 4 "D" HOLE ADDED - CHANFERED REDRAWN FROM SIZE 1	5-26-65	X1	G.D.C.
Ø	ORIGINAL RELEASE FOR PRODUCTION	4/26/67	Ø	C.V.



HOLE	DESCRIPTION	REQ
A	.094 $\pm .001$ DIA	4
B	DR. .144 DIA, C/SINK 82° X .284 DIA.	10
C	DR. & TAP FOR 4-40	5
D	DR. & TAP FOR 10-32	4

REQD. ITEM	PART NUMBER	DESCRIPTION	SYMBOL
F. BUDETTI		LIST OF MATERIAL	

MATERIAL	TITLE
.312 THK ALUMINUM 202024-T3	THE TECHNICAL MATERIEL CORP. MAMARONECK, NEW YORK

Q.TY./UNIT	1	TSTE - 10K	ASSY. NO.	AS165
SCALE	1:1	MODEL USED ON	CODE	A

UNLESS OTHERWISE SPECIFIED DIMENSIONS ARE IN INCHES AND INCLUDE CHEMICALLY APPLIED OR PLATED FINISHES			
DECIMALS	TOLERANCES	FRACTIONS	ANGLES
X ± .05		± 1/64	± 0° 30'
XX ± .01			
.XXX ± .005			

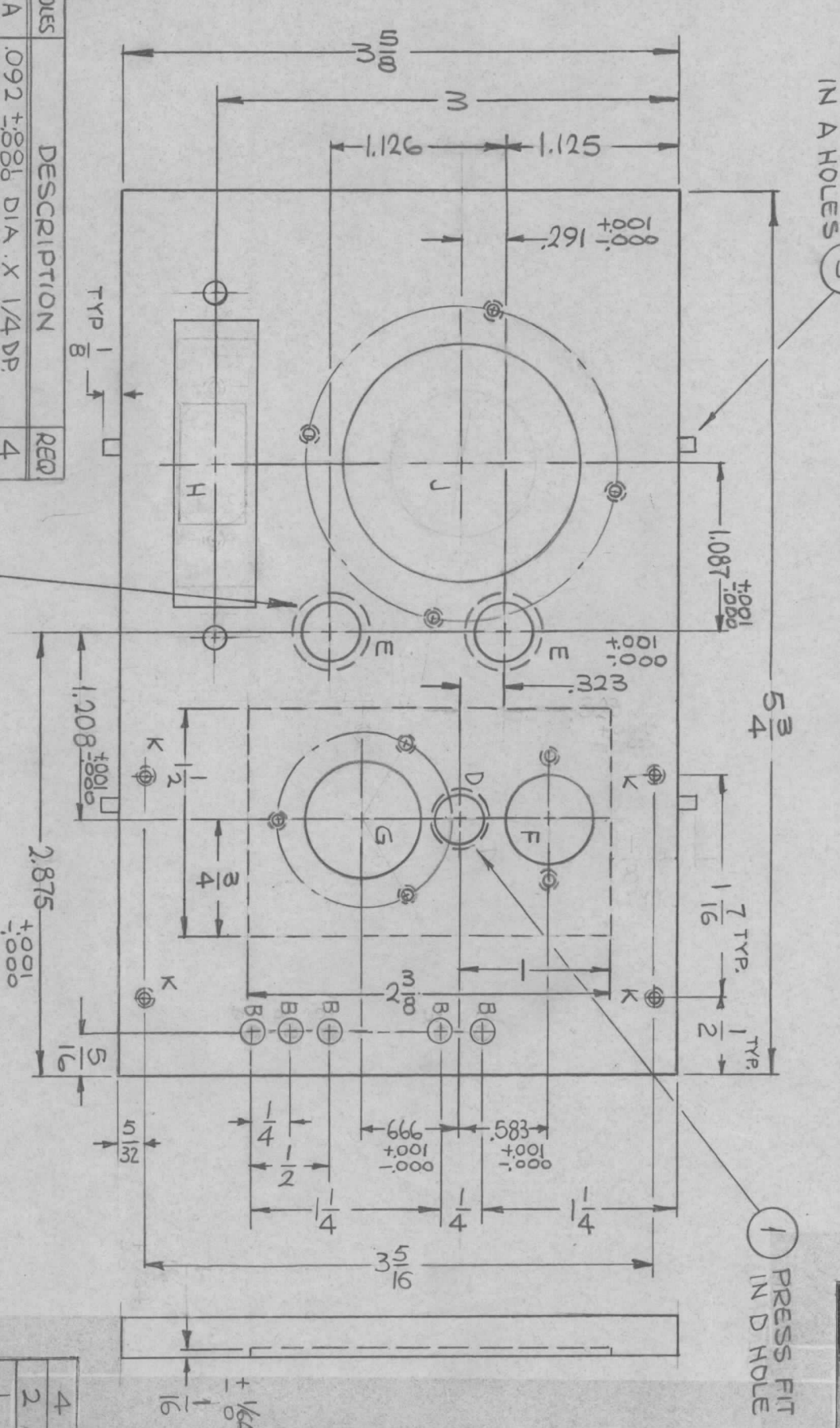
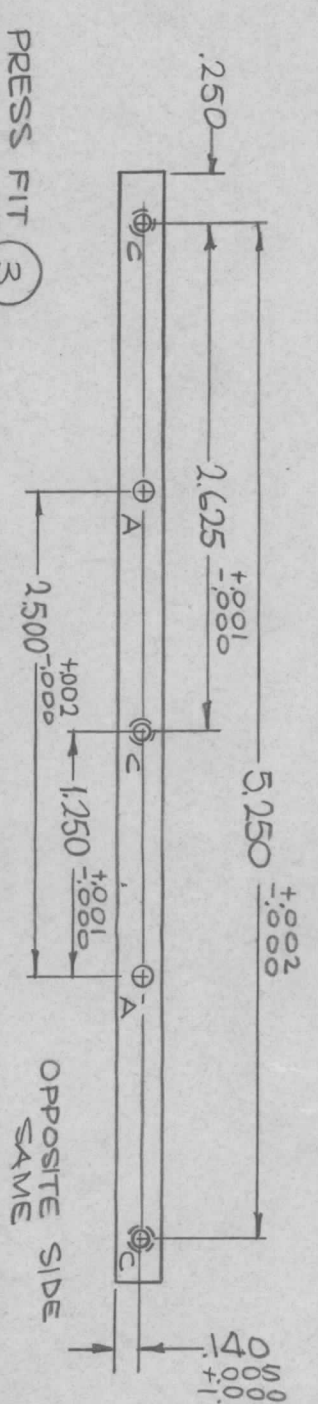
NOTES

THE CONTENTS OF THIS DRAWING ARE THE EXCLUSIVE PROPERTY OF THE TECHNICAL MATERIEL CORP. ITS UNAUTHORIZED USE OR REPRODUCTION IN WHOLE OR IN PART IS STRICTLY FORBIDDEN.

DRAWN	CHECKED	ELECT. DES.	MECH. DES.	DATE	DATE	DATE	DATE
SBC		Q.A.		4-6-65			

FINAL APPROVAL	DATE	REV. LTR.
[Signature]	4/26/67	Ø

SYM		DESCRIPTION	DATE	E.M.N. NO.	DRAFT	CHKD	APPD
X1		WAS 3/16 THICK, 1-1/2 X 2-3/8 X 1/16 GROOVE ADDED	4-26-65	X1	SRG		
X2		DIA. J HOLE WAS .9365 / .9370 - "H" DETAIL WAS .25 PINS CONNECTOR	4-29-65	X2	G.D.L.		
X3		"B" HOLES WERE 2-56 TAP - 4 "K" HOLES ADDED	5-4-65	X3	G.D.L.		
X4		H DETAIL WAS A 9 PIN CONNECTOR	5-17-65	X4	SRG		
Ø		ORIG RELEASE FOR PRODUCTION	5-8-67	Ø	RG		



HOLES	DESCRIPTION	REQD
A	.092 ±.001 DIA. X 1/4 DP.	4
B	.158 ±.002 DIA	5
C	DRILL & TAP FOR G-32 X 1/2 DP.	6
D	DR. 5/16 DIA. C'BORE .3740 DIA. X.125 ±.005 DP.	1
E	DR. 3/8 DIA. C'BORE .4990 DIA. X.125 ±.005 DP.	2
F	SEE DETAIL	1
G	SEE DETAIL	1
H	SEE DETAIL	1
J	SEE DETAIL	1
K	DR. & TAP FOR 4-40	4

Q'TY./UNIT	SCALE	MODEL USED ON	CODE	ASSY. NO.
1	1:1	ASTE-10K	A	A5165

REF: LD1921  
LD1922

REQD.	ITEM	PART NUMBER	DESCRIPTION	SYMBOL
4	3	PN116-N-3-S	PIN, DOWEL	A
2	2	BB 126-15	BEARING, RACE	E
1	1	BB126-10	BEARING, RACE	D

F. RUDETTI

MATERIAL: .250 THICK ALUMINUM 2024-T3

FINISH: S404 YELLOW IRIDITE

LIST OF MATERIAL

THE TECHNICAL MATERIEL CORP.  
MAMARONECK, NEW YORK

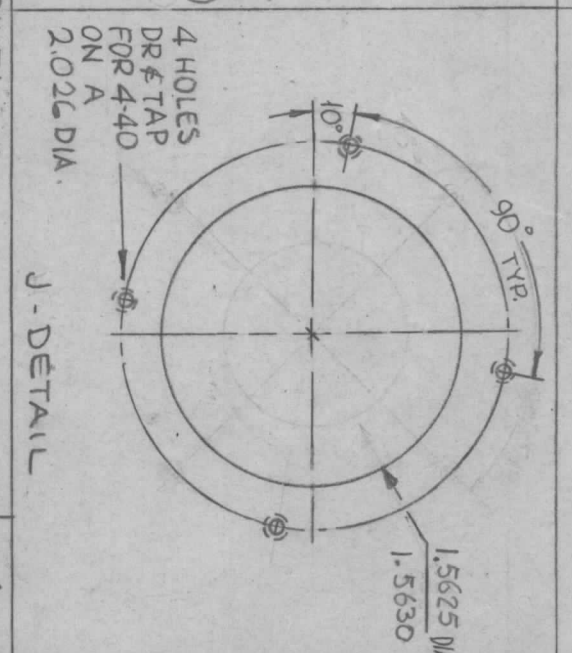
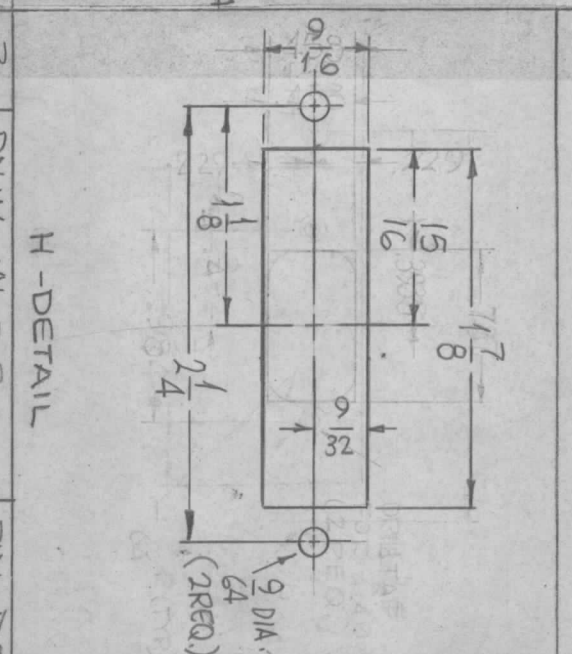
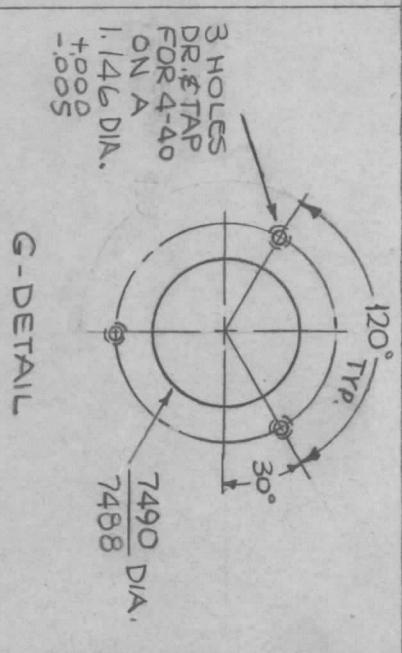
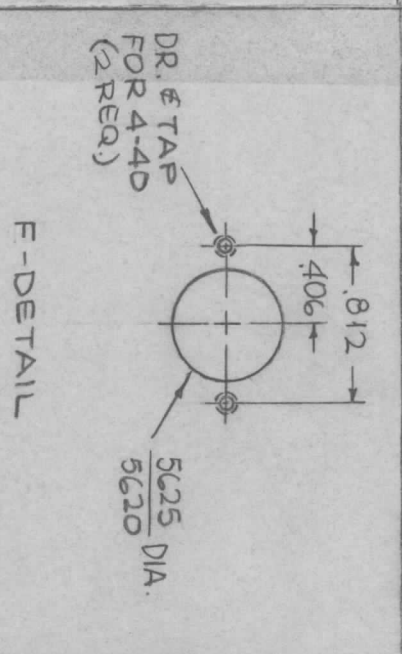
PLATE, GEAR, FRONT

UNLESS OTHERWISE SPECIFIED DIMENSIONS ARE IN INCHES AND INCLUDE CHEMICALLY APPLIED OR PLATED FINISHES

DECIMALS: X ± .05, .XX ± .01, .XXX ± .005

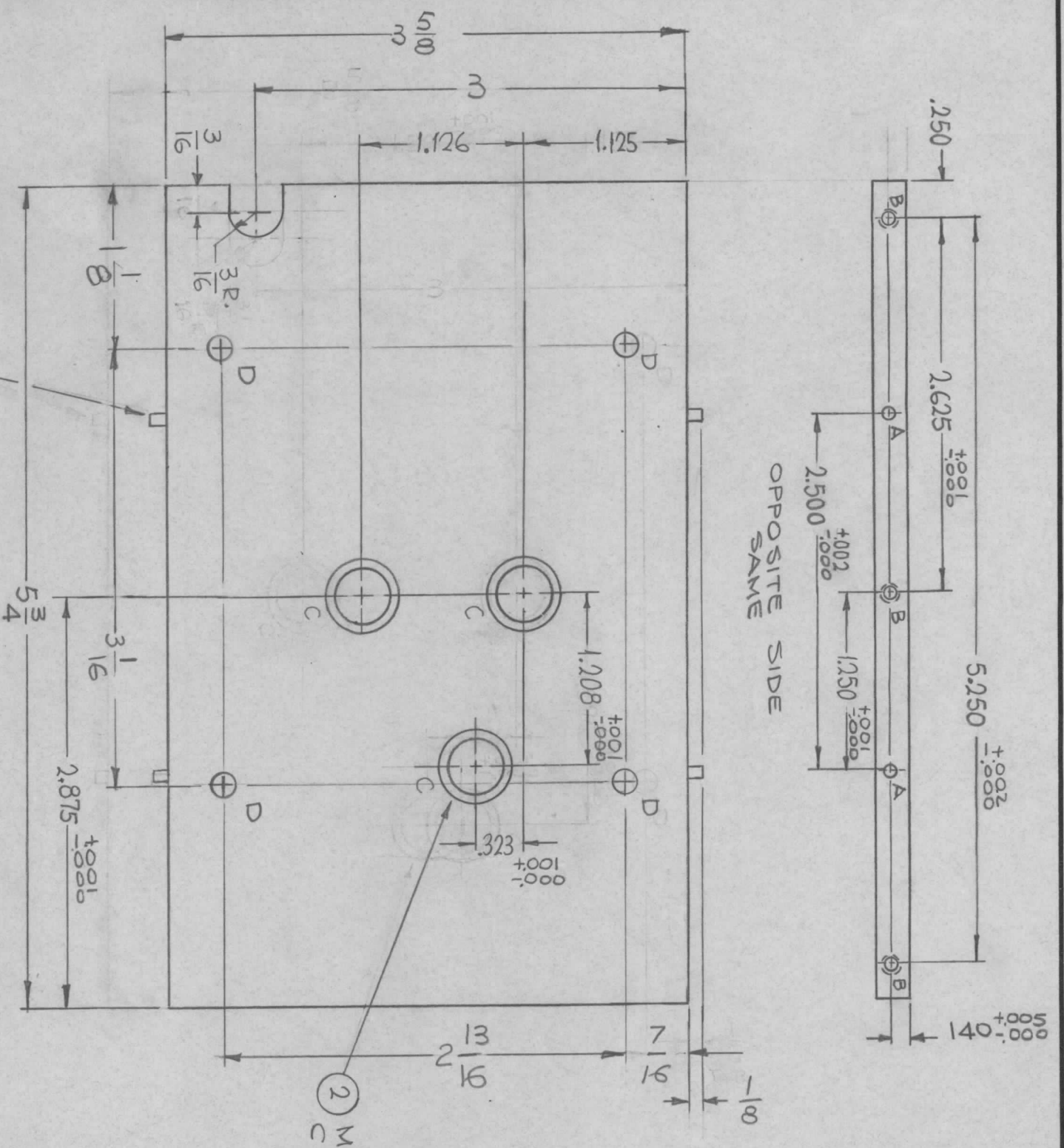
FRACTIONS: ± 1/64, ANGLES: ± 0° 30'

TOLERANCES



PM1240  $\emptyset$

REVISIONS		DATE	E.M.N. NO.	DRAFT	CHKD	APPD
X1	SLOT ADDED, WAS 3/16 THICK	4-26-65	X1	SRG		
X2	DIM. SLOT 3/16 WAS 3/4	4-30-65	X2	G.D.L		
X3	4"D" HOLES ADDED	5-26-65	X3	G.D.L		
X4	PN116-M-3S WAS PN116-N-3S ORIGINAL RELEASE FOR PRODUCTION	5-25-65	X4	SRG	DA	
$\emptyset$		4-26-67	$\emptyset$	CV		



HOLES	DESCRIPTION	REQ.
A	.092 ±0.005 DIA. X 1/4 DR	4
B	DR. #TAP FOR G-32 X 1/2 DP.	6
C	DR. 3/8 DIA. C'BORE 4990 DIA X .125 ±0.005 DR	3
D	11/64 DIA	4

① MOUNT IN ALL A HOLES

② MOUNT IN ALL C HOLES

REQD.	ITEM	PART NUMBER	DESCRIPTION	SYMBOL
3	2	BB126-15	BEARING, RACE	C
4	1	PN116-M-3-S	PIN, DOWEL	A

F. BUDETTI		LIST OF MATERIAL	
MATERIAL		THE TECHNICAL MATERIEL CORP.	
.250THICK ALUMINUM		MAMARONECK, NEW YORK	
2024-T3		TITLE	
S404 YEL. IRIDITE		PLATE, GEAR, REAR	

QTY./UNIT	MODEL USED ON	ASSY. NO.
1	TSTE-10R	A5165

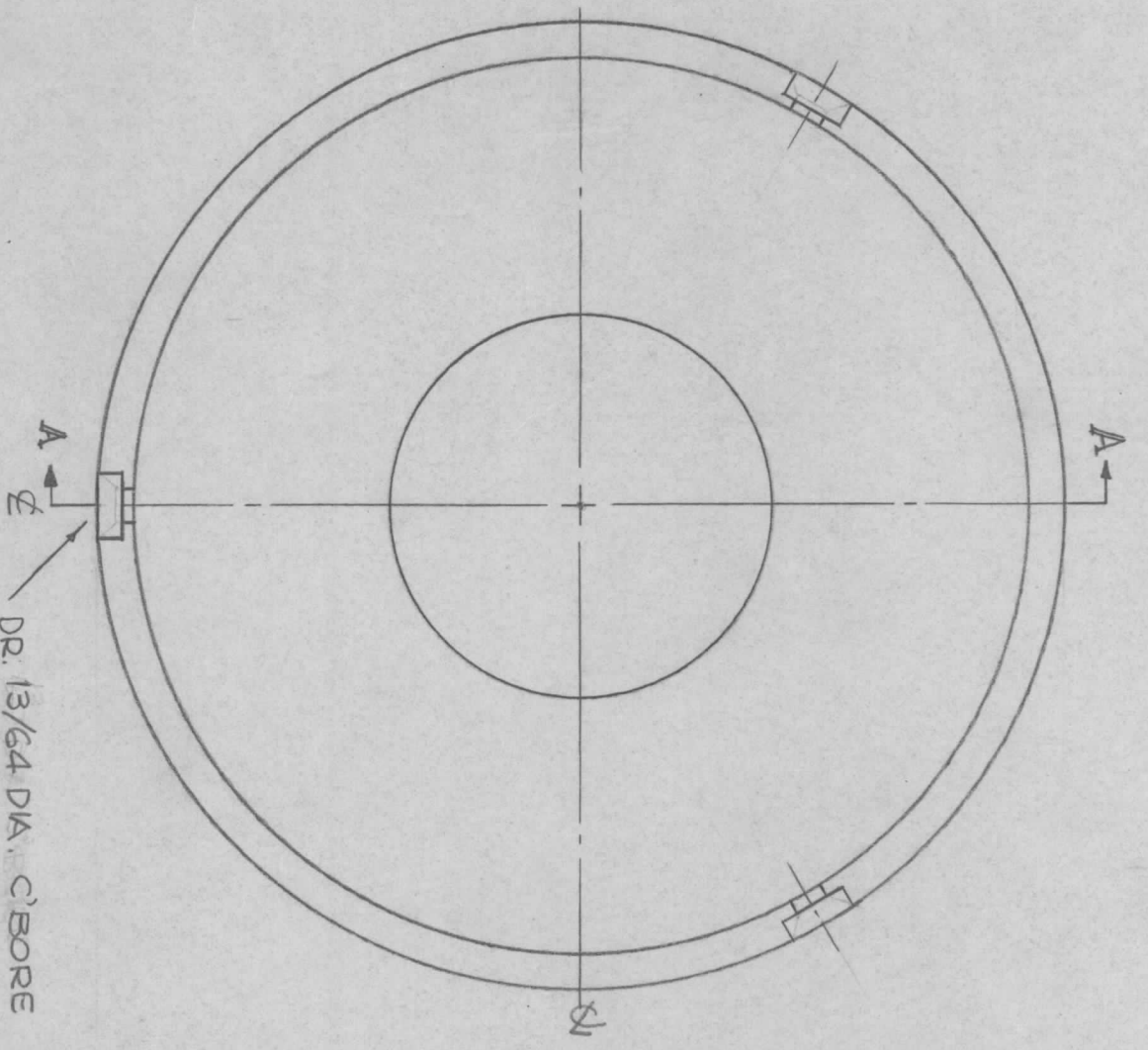
SCALE	CODE	DECIMALS	TOLERANCES	FRACTIONS	ANGLES
1:1	A	.X ± .05 .XX ± .01 .XXX ± .005		± 1/64 ± 1/32 ± 0° 30'	

NOTES

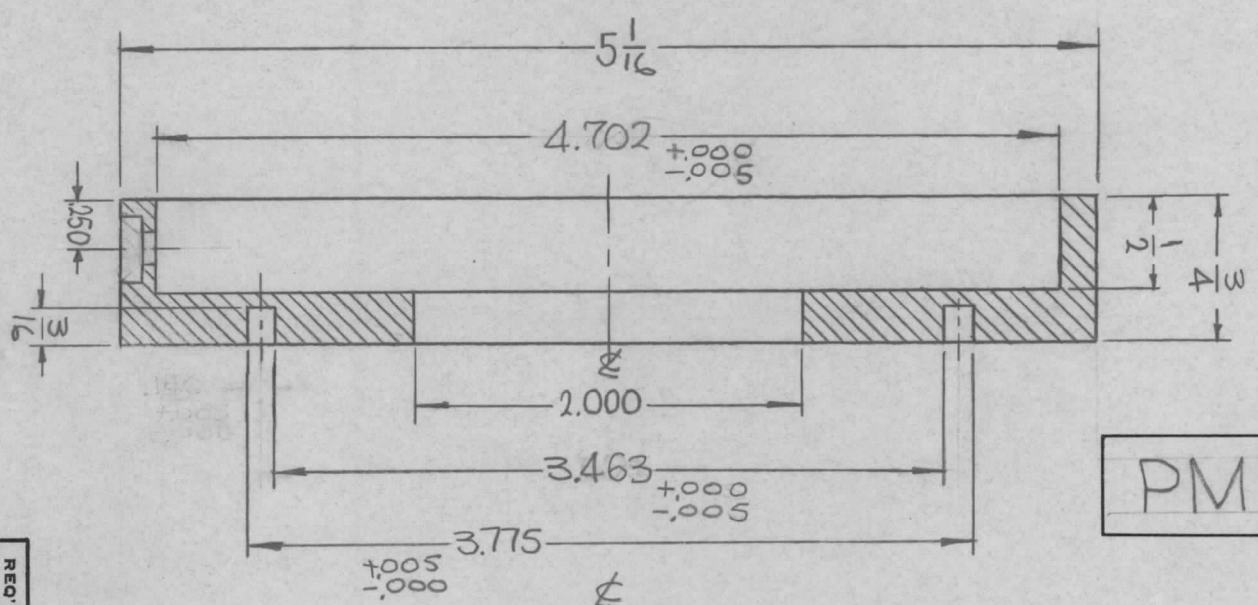
DATE	DATE	DATE
4-8-65	4-26-65	4-26-67



TMC  
 4.7.1.1  
 2.7.1.1

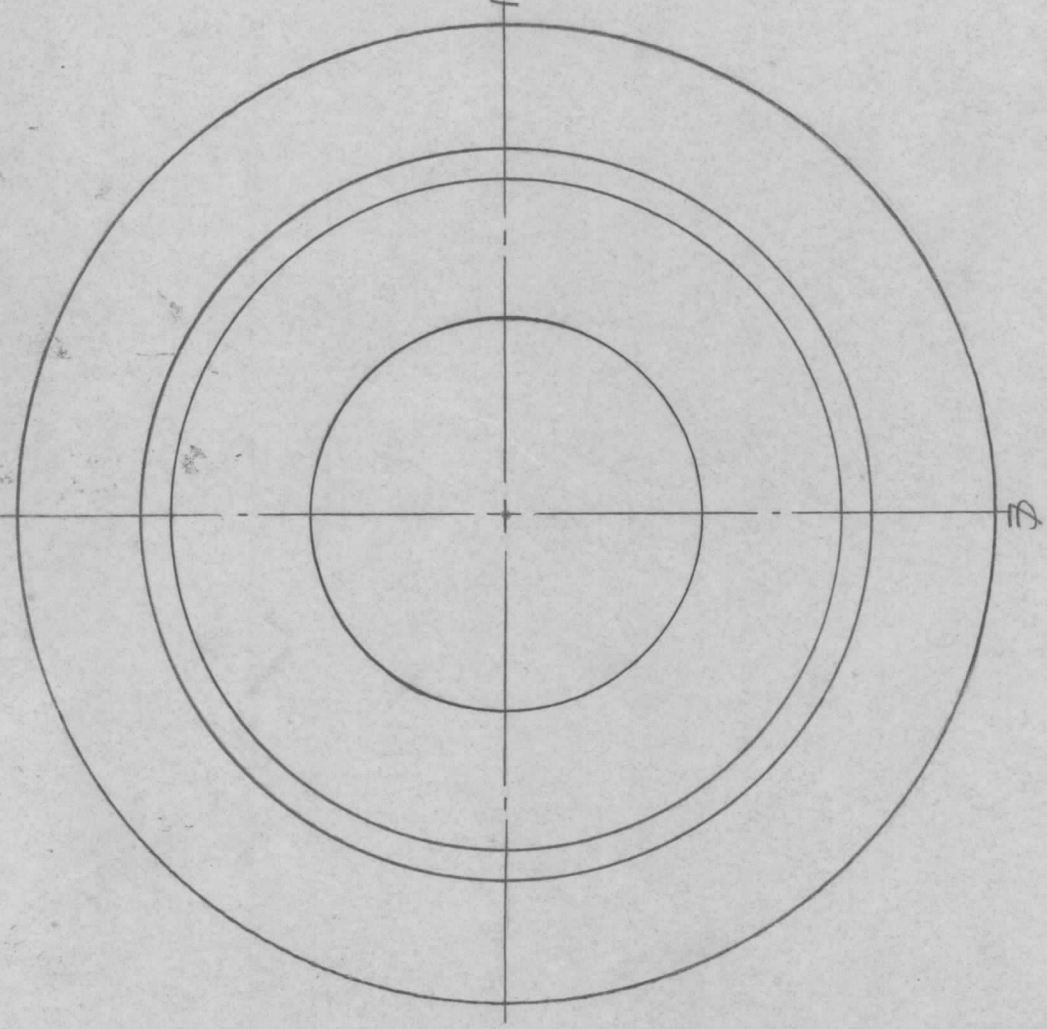


DR. 13/64 DIA. C'BORE  
 23/64 DIA X .108 DP,  
 EQUALLY SPACED  
 120° APART,  
 (3REQ.)



PM1241

SYM	DESCRIPTION	DATE	E.M.N. NO.	DRAFT	CHKD	APPD
X1	3.495 WAS 3.594 TO CENTER OF GROOVE GROOVE WAS .156, 4.702 WAS $\pm .005$	4-20-65	X1	SRG		
X2	3.463 $\pm .005$ WAS 3.495 $\pm .005$	4-26-65	X2	SRG		
X3	HOLES WERE 8-32 C'SINK ORIGINAL RELEASE FOR PRODUCTION	5-11-65	X3	SRG	VA	
		8-366		RME		



SECTION - A-A

NOTES

THE CONTENTS OF THIS DRAWING ARE THE EXCLUSIVE PROPERTY OF THE TECHNICAL MATERIEL CORP. ITS UNAUTHORIZED USE OR REPRODUCTION IN WHOLE OR IN PART IS STRICTLY FORBIDDEN.

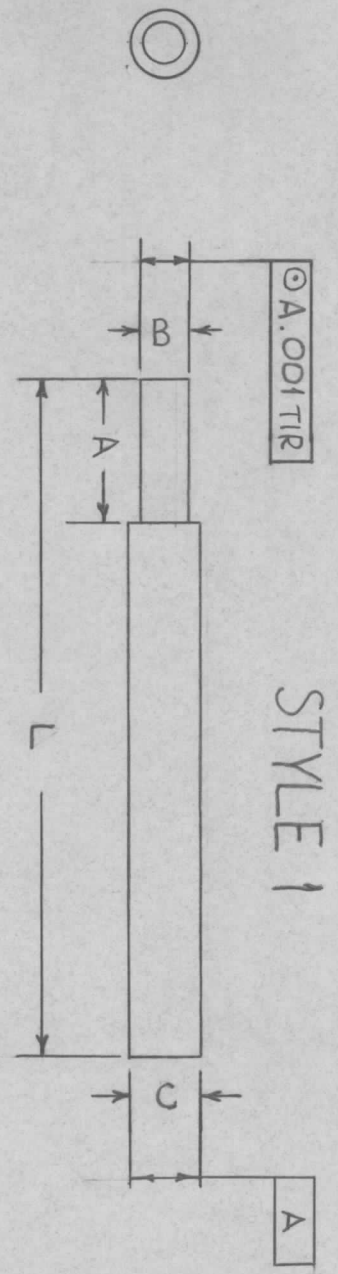
Q'TY./UNIT	1	MODEL USED ON	TSTE-10K	ASSY. NO.	A
SCALE	1:1	CODE	A		

REQD. ITEM	PART NUMBER	DESCRIPTION	SYMBOL
F. BUDETTI		LIST OF MATERIAL	
MATERIAL	ALUMINUM 2024-T3	THE TECHNICAL MATERIEL CORP. MAMARONECK, NEW YORK	
FINISH	S404 YELLOW IRIDITE	TITLE PLATE, CAPACITOR, TOP	

UNLESS OTHERWISE SPECIFIED DIMENSIONS ARE IN INCHES AND INCLUDE CHEMICALLY APPLIED OR PLATED FINISHES	DECIMALS .X $\pm$ .05 .XX $\pm$ .01 .XXX $\pm$ .005	TOLERANCES	FRACTIONS $\pm$ 1/64 ANGLES $\pm$ 0° 30'
DRAWN	SRG	DATE	4-7-65
CHECKED	SRG	DATE	
ELECT. DES.		DATE	
MECH. DES.		DATE	
FINAL APPROVAL	SRG	DATE	4-7-65
REV. LTR.		DATE	

TMC PART NUMBER	A	B	C	D	E	F	G	STYLE
PM1254-1	.187	+ .1872 - .1870	+ .2497 - .2495	NONE	NONE	NONE	NONE	1
-2	1.250	.2490 .2495	.375	.218	.218	2.500	.2490 .2495	2
-3	1.250	.2495 .2490	.375	.218	.218	2.500	.2495 .2490	2
-4	1.250	.2495	.375	.218	.218	2.500	.2495	2

STYLE 1

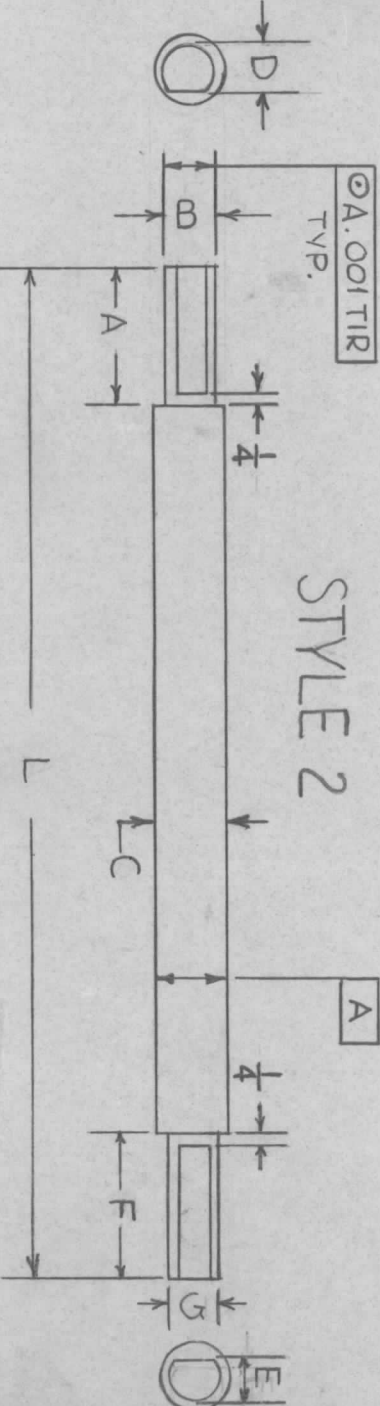


"B" DIMENSION TO BE CONCENTRIC TO "C" DIMENSION WITHIN ±

PM1254-1 \$2.500  
 BASIC TMC PT NO  
 MATERIAL FINISH  
 LENGTH DESIRED EXPRESS IN INCHES TO THREE DECIMAL PLACES

PM1254

SYM	DESCRIPTION	DATE	E.M.N. NO.	DRAFT	CHKD	APPD
X1	CONCENTRICITY ADDED	6-5-65	X1	APP		
Ø	ORIGINAL RELEASE FOR PRODUCTION	4/20/66	Ø	CV		



MATERIAL	FINISH	CODE
AL 2024-T4	YEL IRIDITE	A
BRASS FREE TURNING	NICKEL PLATE .0005-.0008	B
STAINLESS STEEL #303	PASSIVATE S104	S
PHENOLIC	NAT.	P
XXX	NAT.	N
MELAMINE G5	NAT.	E
EPOXY G11	NAT.	E

REQ'D. ITEM	PART NUMBER	DESCRIPTION	SYMBOL
BUDETTI		LIST OF MATERIAL	

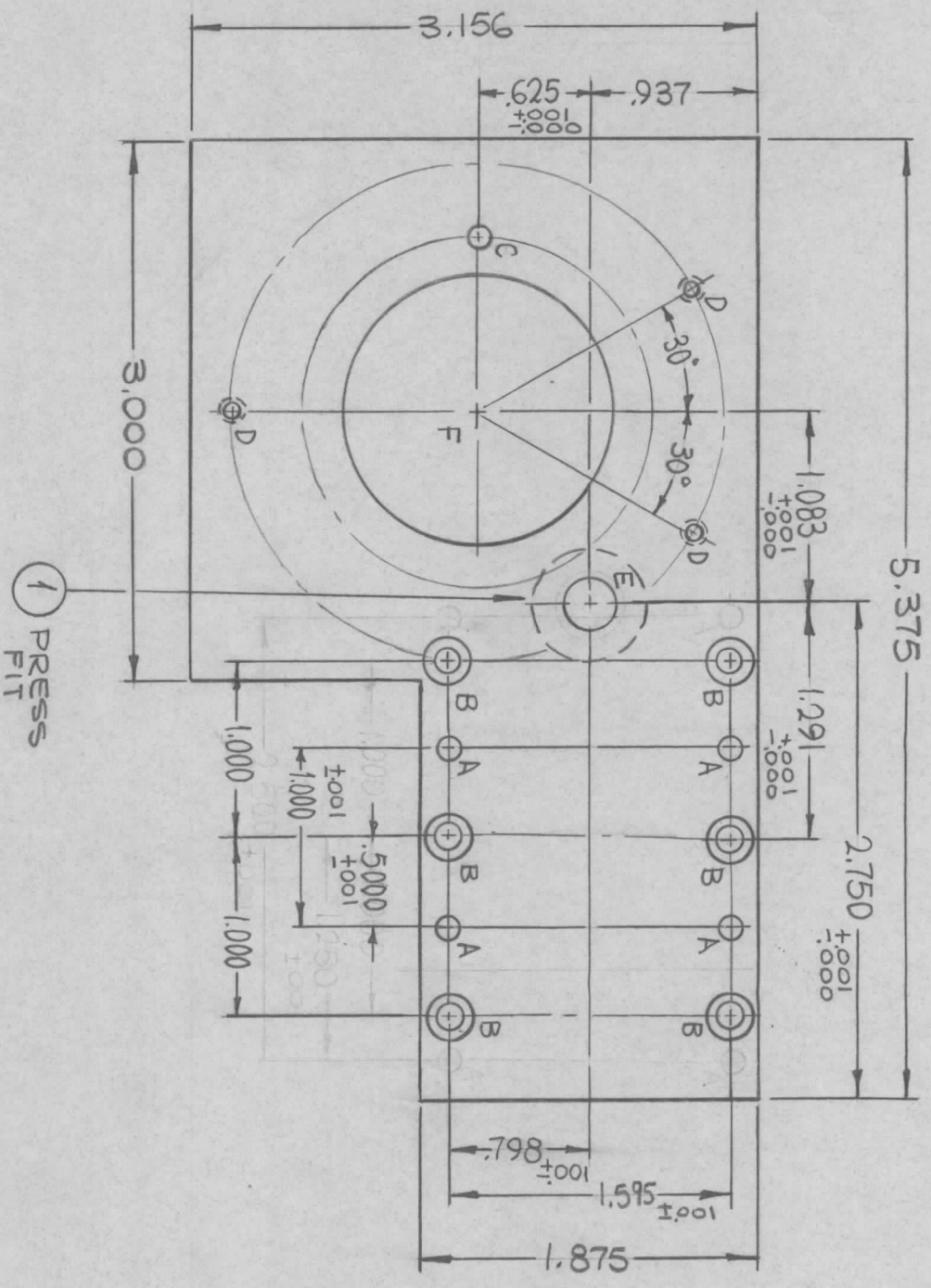
MATERIAL SEE CHART  
 FINISH SEE CHART  
 TITLE: SHAFT SHOULDER  
 THE TECHNICAL MATERIEL CORP.  
 MAMARONECK, NEW YORK

Q'TY./UNIT: TST ( ) 10K  
 MODEL USED ON: \_\_\_\_\_  
 ASS'Y. NO.: \_\_\_\_\_  
 SCALE: \_\_\_\_\_  
 CODE: \_\_\_\_\_

NOTES

THE CONTENTS OF THIS DRAWING ARE THE EXCLUSIVE PROPERTY OF THE TECHNICAL MATERIEL CORP. ITS UNAUTHORIZED USE OR REPRODUCTION IN WHOLE OR IN PART IS STRICTLY FORBIDDEN.

REVISIONS		DATE	E.M.N. NO.	DRAFT	CHKD	APPD
Ø	ORIGINAL RELEASE FOR PRODUCTION	3/14/65	Ø	AAA		JK



HOLES	DESCRIPTION	REQ.
A	.126 ±.005 DIA.	4
B	DRILL 9/64 DIA. C'BORE .218 DIA. X 5/32 DP.	6
C	.128 ±.008 DIA. X 3/16 DP. ON A 984 RAD.	1
D	DRILL & TAP FOR 4-40 ON A 2.744 DIA.	3
E	DRILL 13/32 DIA. C'BORE .6240 DIA. X .196 ±.005 DP. <u>.6245</u>	1
F	1.5005 - 1.5010 DIA.	1

REQD. ITEM	PART NUMBER	DESCRIPTION	SYMBOL
1	BB120-1	BEARING, BALL	E

MATERIAL	TITLE
F. BUDETTI 1/4 THICK ALUMINUM 2024-T4	LIST OF MATERIAL  THE TECHNICAL MATERIEL CORP. MAMARONECK, NEW YORK

FINISH	DRAWN	DATE	FINAL APPROVAL	DATE
S404 YEL. IRIDITE	SRG	5-14-65	<i>[Signature]</i>	3/14/65
	CHEKED	DATE		
	ELECT. DES.	DATE		
	MECH. DES.	DATE		

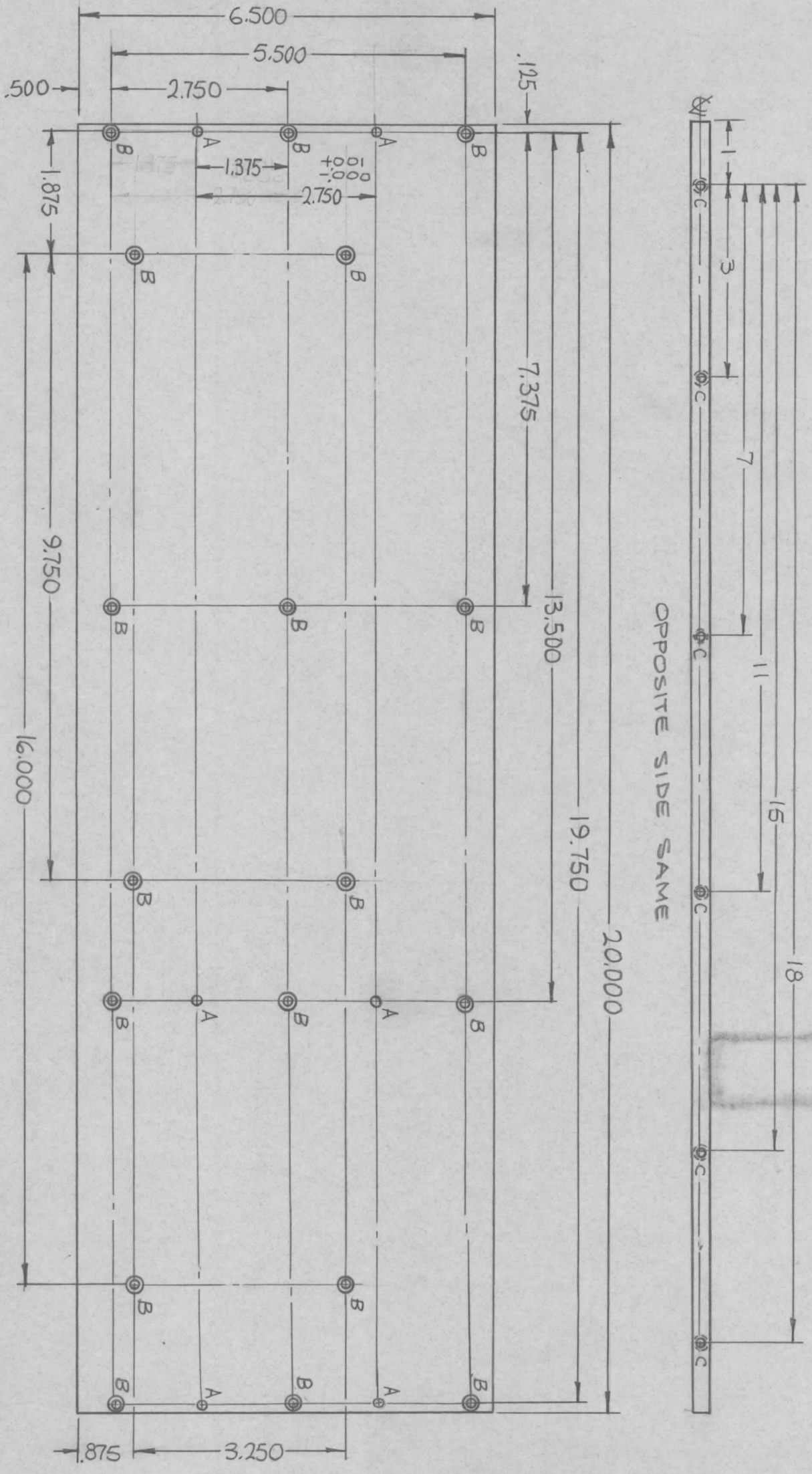
QTY./UNIT	1	TST( ) 10K	ASSY. NO.	A4286
SCALE	1:1	MODEL USED ON	CODE	A

NOTES

THE CONTENTS OF THIS DRAWING ARE THE EXCLUSIVE PROPERTY OF THE TECHNICAL MATERIEL CORP. ITS UNAUTHORIZED USE OR REPRODUCTION IN WHOLE OR IN PART IS STRICTLY FORBIDDEN.

SYM	DESCRIPTION	DATE	E.M.N. NO.	DRAFT	CHKD	APPD
X1	C HOLES ADDED, 5.437 WAS 5.500	7-20-65	X1	<i>[Signature]</i>		
X2	COMPLETELY - RE-DESIGNED	8-3-65	X2	<i>[Signature]</i>		
X3	COMPLETELY - RE-DESIGNED	8-9-65	X3	<i>[Signature]</i>		
X4	5.500 WAS FROM B TO A HOLES (ERROR)	8-26-65	X4	<i>[Signature]</i>		AVC
Ø	ORIGINAL RELEASE FOR PRODUCTION	3-3-66	M-	Jc	<i>[Signature]</i>	AVC

OPPOSITE SIDE SAME



HOLE	DESCRIPTION	REQ
A	.126 ± .005 DIA.	6
B	DR. 1/16 DIA. C BORE .266 DIA. X .138 DR.	18
C	DR. TAP FOR G-32 X 1/2 DEEP	12

NOTES

Q'TY./UNIT	1	TST-10K	MODEL USED ON	ASS'Y. NO.
SCALE	1/2:1	A		

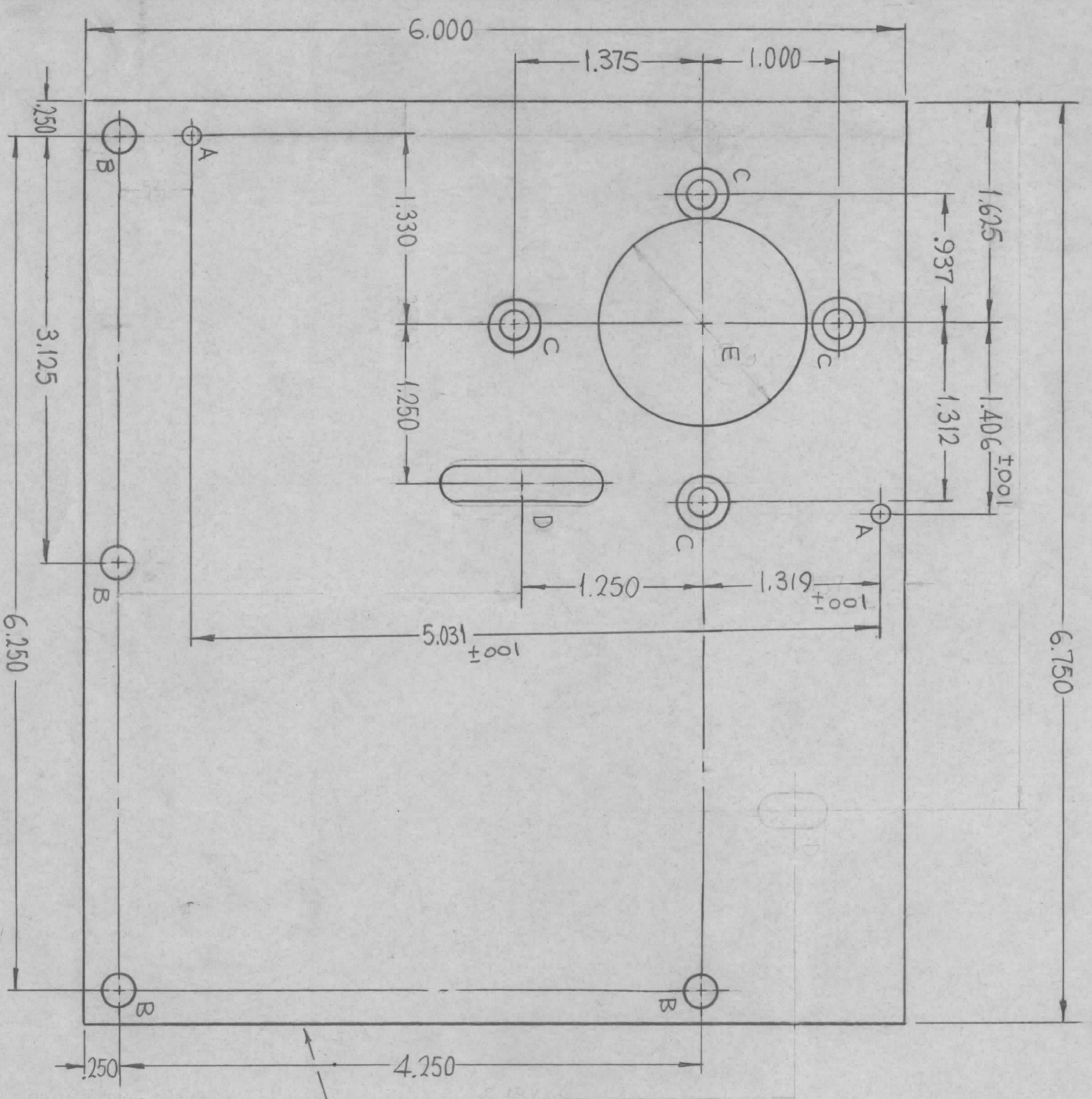
UNLESS OTHERWISE SPECIFIED DIMENSIONS ARE IN INCHES AND INCLUDE CHEMICALLY APPLIED OR PLATED FINISHES

DECIMALS: .X ± .05  
.XX ± .01  
.XXX ± .005

FRACTIONS: ± 1/64 ANGLES: ± 0° 30'

TOLERANCES

REC'D.	ITEM	PART NUMBER	DESCRIPTION	SYMBOL
	F. BUDETTI		LIST OF MATERIAL	
	MATERIAL		THE TECHNICAL MATERIEL CORP.	
	1/4 THICK ALUMINUM		MAMARONECK, NEW YORK	
	2024-T4			
	FINISH			
	S404 YEL. IRIDITE			
	TITLE		PLATE, BOTTOM, LOW PASS FILTER	
	DRAWN	<i>[Signature]</i>	DATE	8-9-65
	CHECKED	<i>[Signature]</i>	DATE	3-2-66
	ELECT. DES.	<i>[Signature]</i>	DATE	
	MECH. DES.	<i>[Signature]</i>	DATE	
	FINAL APPROVAL	<i>[Signature]</i>	DATE	3/3/66
	SHEET			
	REV. LTR.			



PM1284

REVISIONS		DATE	E.M.N. NO.	DRAFT	CHKD	APPD
Ø	ORIGINAL RELEASE FOR PRODUCTION	3-3-66	44	JC	QTB	me

HOLE	DESCRIPTION	REQ.
A	.126 ± .006 DIA.	2
B	15/64 DIA.	4
C	DR. 196 DIA. C'SINK 82° TO 390 D.	4
D	1/4 X 1-1/4 SLOT	1
E	1-1/2 DIA	1

MARK TMC PART NO. (PM1284)  
 1/8 HIGH GOTHIC W/LATEST  
 REV. LETTER. (ON SIDE)

REQD. ITEM	PART NUMBER	DESCRIPTION	SYMBOL
F. BUDETTI		LIST OF MATERIAL	

MATERIAL	TITLE
1 THICK ALUMINUM 4 2024-T4	PLATE, MTC. GEAR BOX
FINISH S404 YEL. IRIDITE	THE TECHNICAL MATERIEL CORP. MAMARONECK, NEW YORK

Q'TY./UNIT	1	MODEL USED ON	TST-10K	ASSY. NO.	
SCALE	1:1	CODE	A		

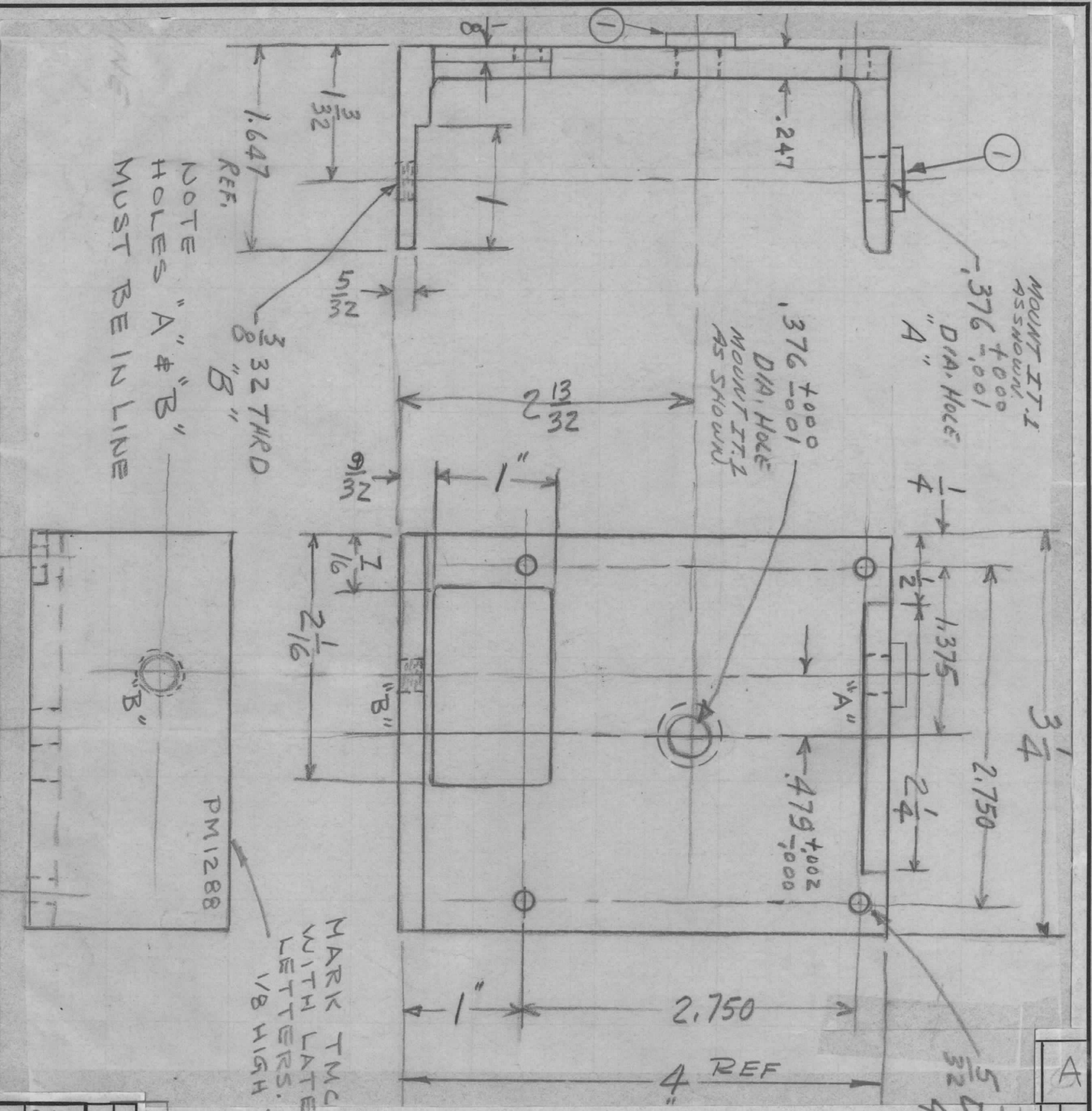
UNLESS OTHERWISE SPECIFIED DIMENSIONS ARE IN INCHES AND INCLUDE CHEMICALLY APPLIED OR PLATED FINISHES		TOLERANCES	
DECIMALS	.X ± .05	FRACTIONS	± 1/64
	.XX ± .01	ANGLES	± 0° 30'
	.XXX ± .005		

DRAWN	CHECKED	ELECT. DES.	MECH. DES.	DATE	DATE	DATE	DATE
[Signature]	[Signature]	[Signature]	[Signature]	7-26-65	3-2-66	3/9/64	

FINAL APPROVAL	[Signature]	DATE	3/9/64
REV. LTR.	Ø		

NOTES

THE CONTENTS OF THIS DRAWING ARE THE EXCLUSIVE PROPERTY OF THE TECHNICAL MATERIEL CORP. ITS UNAUTHORIZED USE OR REPRODUCTION IN WHOLE OR IN PART IS STRICTLY FORBIDDEN.



A

SYMBOL		DESCRIPTION		DATE	EM. N. NO.	DRAFT	CHKD	APPD
Ø	A	ORIGINAL RELEASE FOR PED		11/18/65	Ø			
		IT 1 BB118-3 ADDED		12/21/65	15504			

REVISIONS

MARK TMC PART NO WITH LATEST REV. 1/8 HIGH BLACK GOTHIC

NOTE HOLES "A" & "B" MUST BE IN LINE

QTY./UNIT	1	MODEL USED ON	AT-2A	ASSY. NO.	
SCALE		CODE			

RECD.	ITEM	PART NUMBER	DESCRIPTION	SYMBOL
2	1	BB118-3	BPG SLV. FLG.	
LIST OF MATERIAL				
MATERIAL			TITLE	
4 X 1.647 X .247 STRUCTURAL ALUMINUM CHANNEL 6061-T6			BRACKET, MTG., GEAR	
FINISH			S4D4, YELLOW IRIDITE	
THE TECHNICAL MATERIEL CORP.				
MAMARONECK, NEW YORK				
DRAWN			DATE	FINAL APPROVAL
M2			11-18-65	
CHECKED			DATE	
M2			11-18-65	
ELECT. DES.			DATE	
M2			11-18-65	
MECH. DES.			DATE	
M2			11-18-65	
DECIMALS			FRACTIONS	
.X ± .05			± 1/64	
.XX ± .01			ANGLES	
.XXX ± .005			± 0° 30'	
			DATE	DATE
				11/18/65
			SHEET	REV. LTR.
			PM1288	A