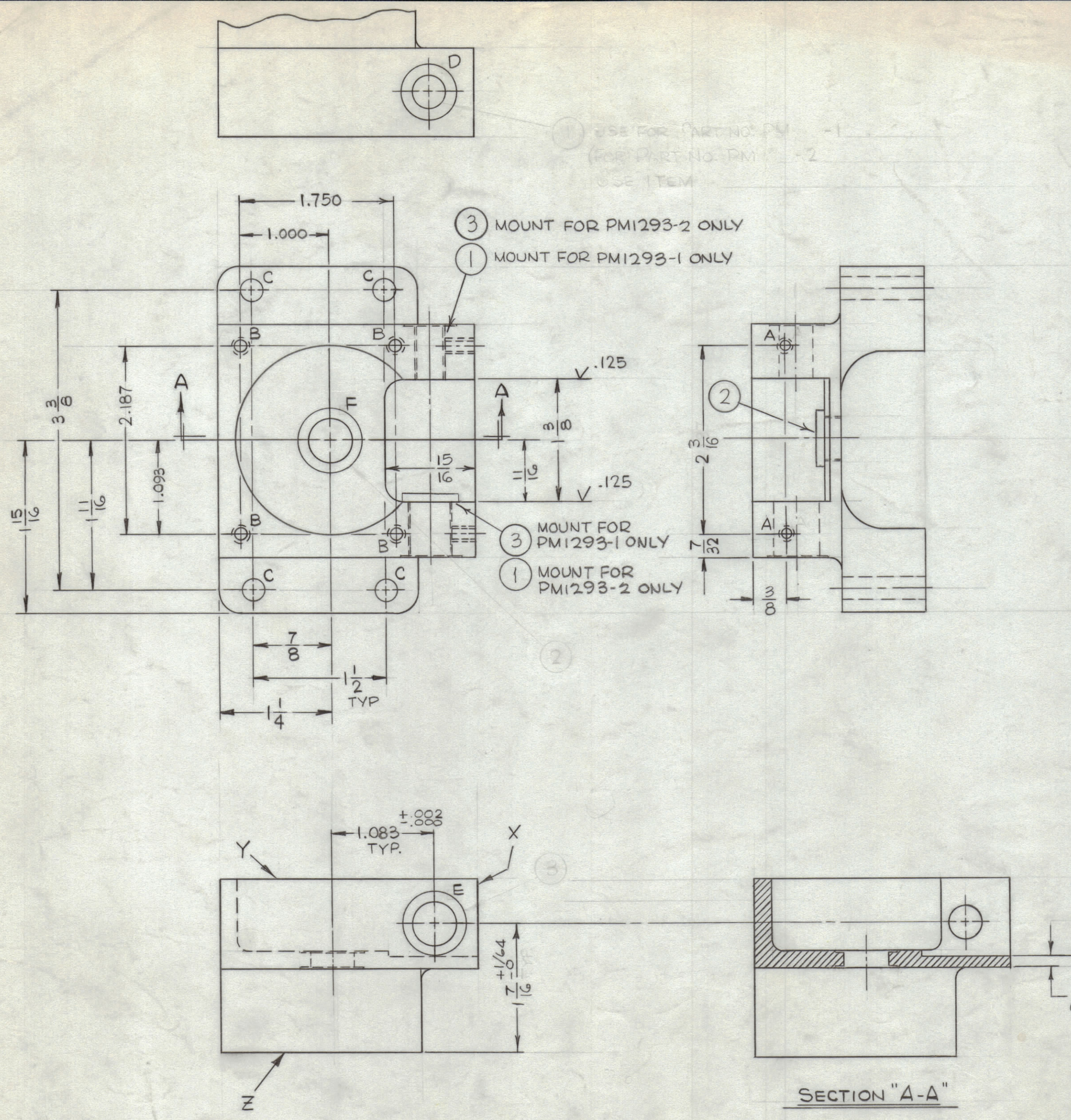


REVISIONS							
ZONE	SYM	DESCRIPTION	DATE	E.M.N. NO.	DRAFT	CHKD	APPD
	X1	2 3/16 WAS 2.187 ("A" HOLES)	12-2-65		Jc		
	X2	1T. 3 WAS BB118-38, * NOTE ADDED, 9/16 WAS 5/32	2-1-66				
	Ø	ORIGINAL RELEASE FOR PRODUCTION	2-2-66				



TMC PART NO.	"D" HOLE	"E" HOLE
PM1293-1	.3750 ± .0005 DIA. * 5/8 DIA. SPOTFACE X.005 DP.	.5000 ± .0005 DIA. * 23/32 DIA. SPOTFACE X.005 DP.
PM1293-2	.5000 ± .0005 DIA. * 23/32 DIA. SPOTFACE X.005 DP.	.3750 ± .0005 DIA. * 5/8 DIA. SPOTFACE X.005 DP.

\* HOLES "D" & "E" MUST BE LINE REAMED

PM1293  
Ø

HOLE	DESCRIPTION	REQ.
A	DRILL & TAP FOR G-32	2
B	DRILL & TAP FOR 10-32 x 1/2 DEEP	4
C	1/4 DIA.	4
D	SEE P/N CHART	1
E	SEE P/N CHART	1
F	.5000 ± .0005 DIA. - SPOTFACE 23/32 DIA. x .005 DEEP (BOTH ENDS)	1

NOTES

1 EA.	GPT10KLF	A 4095
Q'TY./UNIT	MODEL USED ON	ASS'Y. NO.
SCALE 1:1		
THE CONTENTS OF THIS DRAWING ARE THE EXCLUSIVE PROPERTY OF THE TECHNICAL MATERIEL CORP. ITS UNAUTHORIZED USE OR REPRODUCTION IN WHOLE OR IN PART IS STRICTLY FORBIDDEN.		

REQ'D.	ITEM	PART NUMBER	DESCRIPTION	SYMBOL
1	3	BB118-9	BEARING, FLANGE TYPE	
1	2	BB118-37	BEARING, FLANGE TYPE	
1	1	BB123-31	BEARING, CYLINDRICAL	

LIST OF MATERIAL

MATERIAL SEE CASTING	THE TECHNICAL MATERIEL CORP. MAMARONECK, NEW YORK		
FINISH S404 YELLOW IRIDITE	TITLE MACHINING - GEAR BOX		
UNLESS OTHERWISE SPECIFIED DIMENSIONS ARE IN INCHES AND INCLUDE CHEMICALLY APPLIED OR PLATED FINISHES	DRAWN H. AUSTIN	DATE 11-12-65	FINAL APPROVAL DATE 3/4/66
DECIMALS .X ± .05 .XX ± .01 .XXX ± .005	TOLERANCES	FRACTIONS ± 1/64 ANGLES ± 0° 30'	ELECT. DES. MECH. DES. DATE 2-2-66
		SHEET 2/2	

PM1293