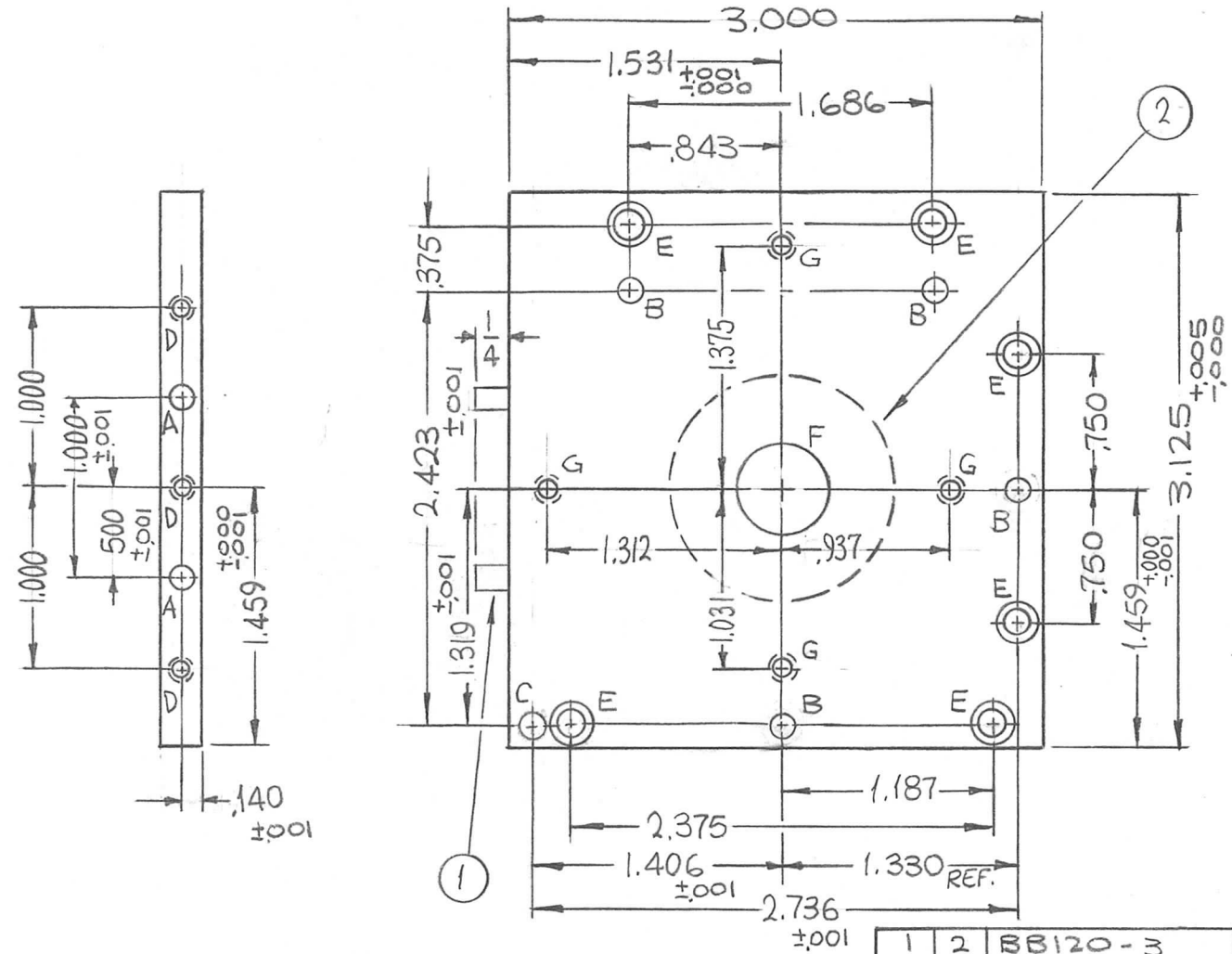


| REQ. PER UNIT | USED ON | | |
|---------------|------------|------------|---------|
| | MODEL | ASS'Y. NO. | DATE |
| 1 | TST ()10K | A4286 | 5-14-65 |

PM1262 Ø



| HOLES | DESCRIPTION | REQ. |
|-------|--|------|
| A | .1247-.1250 DIA X 3/16 DP. | 2 |
| B | .126 ±.001 DIA. | 4 |
| C | .130 ±.005 DIA. | 1 |
| D | DRILL & TAP FOR 4-40 X 3/8 DP. | 3 |
| E | DR. 9/64 DIA. C'BORE .218 DIA X 5/32 DP. | 6 |
| F | DRILL 13/16 DIA. C'BORE 1.1240-1.1245 DIA. X .125 DP. | 1 |
| G | DRILL & TAP FOR 10-32 | 4 |

| REQ. | ITEM | PART NO. | DESCRIPTION | SYMBOL |
|--------------------|------|-------------------|------------------------------|----------------|
| 1 | 2 | BB120-3 | BEARING, BALL | F |
| 2 | 1 | PN116-A-3S | PIN, DOWEL | A |
| 1/4 THICK | | | THE TECHNICAL MATERIEL CORP. | |
| STOCK SIZE | | | MAMARONECK, NEW YORK | |
| ALUMINUM | | | PLATE, TOP, GEAR BOX | |
| MATERIAL | | | | |
| 2024-T4 | | | SRG | JCS |
| TYPE & TEMPER | | HEAT TREAT. SPEC. | DRAWN | CHECKED |
| S404 YEL. IRIDITE | | | | FINAL APPROVAL |
| FINISH & SPEC. NO. | | ELEC. DES. APP. | MECH. DES. APP. | |

| SYM | DESCRIPTION | DATE | CH. NO. | DRAFTS | CHECKER | ENG. APP. |
|---|---------------------------------|------------|----------------|---|---------|-----------|
| Ø | ORIGINAL RELEASE FOR PRODUCTION | 3-3-66 | M | Jc | JCS | anc |
| X ₂ | 1.031 WAS 1.000 | 9-2-65 | X ₂ | JCS | JCS | bb |
| X ₁ | G HOLES ADDED | 7-29-65 | X ₁ | JCS | JCS | bb |
| UNLESS OTHERWISE SPECIFIED DIMENSIONS ARE IN INCHES AND INCLUDE CHEMICALLY APPLIED OR PLATED FINISHES | | SCALE 1:1 | | | | |
| DECIMALS .X ± .05 .XX ± .01 .XXX ± .005 | | TOLERANCES | | FRACTIONS ± 1/64 ANGLES ± 0° 30' | | CODE A |